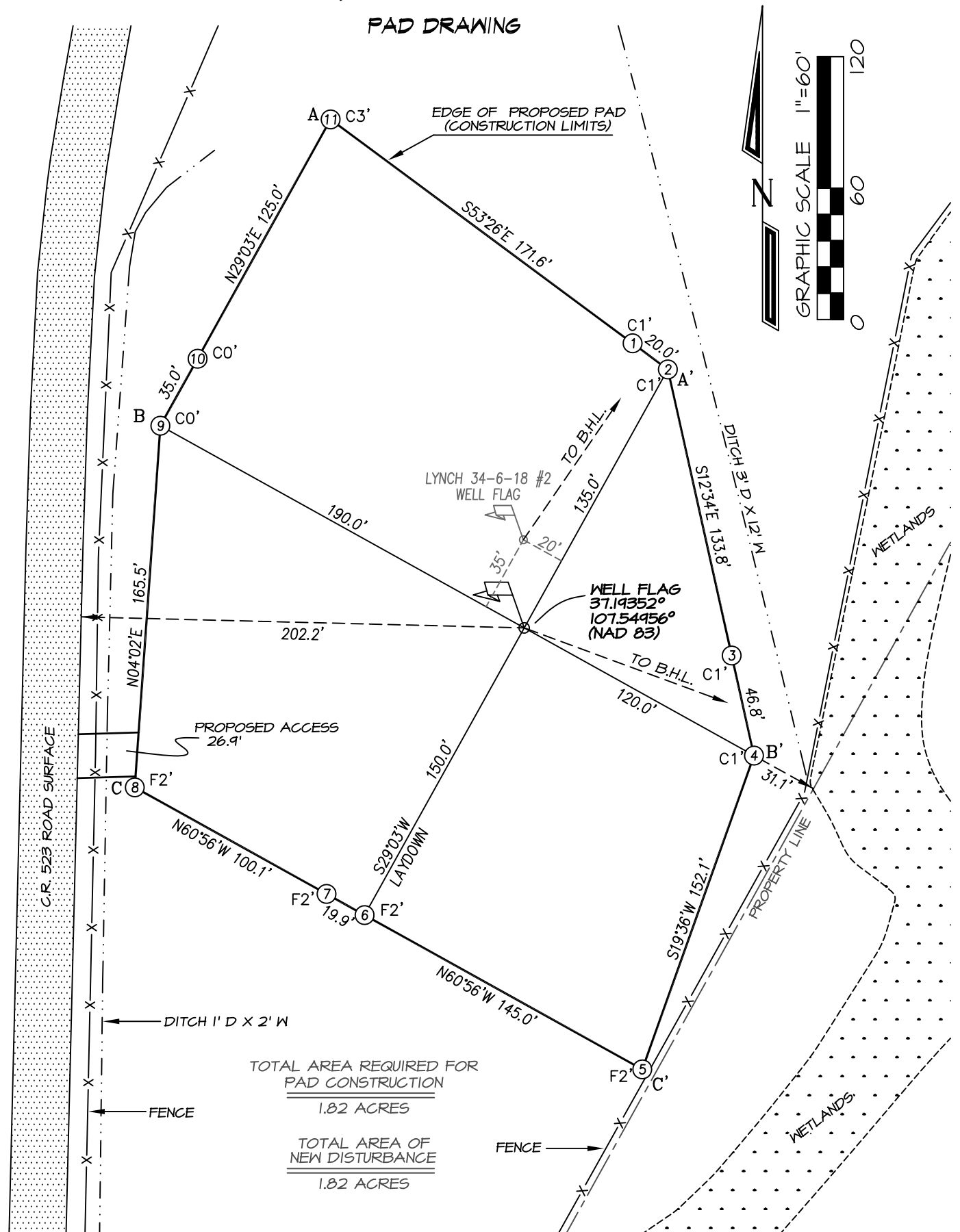


CATAMOUNT ENERGY PARTNERS: LYNCH 34-6-18 #1
1774' FNL, 211' FWL, SECTION 18U, T-34-N, R-6-W, S.U.L., N.M.P.M.,
LA PLATA COUNTY, CO. GROUND LEVEL ELEVATION: 6858'

PAD DRAWING



SCALE: 1" = 60'

DATE DRAWN: 5/21/14

NORTHSTAR SURVEYING & MAPPING, INC.

FILE NO: CEPO3CFA

DRAWN BY: K.R.

CHECKED BY: K.R.