

OPERATOR: **WPX ENERGY**

WELL NAME: RWF 443-25

FIELD NAME: RULISON

DRILLING RIG: NABORS 577

API #: 05-045-22001

LOCATION: SEC. 25 T 6 S R 94 W

SURFACE HOLE: 1185' FSL, 1382' FEL

BOTTOM HOLE: 2122' FSL 606' FEL

SCALE: 1"=100'



533 Bogart Lane, Unit A
Grand Junction, CO 81505
Office (970) 424-5162

RWF 443-25

COUNTY: GARFIELD

STATE: COLORADO

DRILLING FLUID: LSND

LOGGER: LUKE DAVENPORT

GROUND ELEVATION: 6234'

KELLY BUSHING: 6260'

TVD VS. MD = -137'

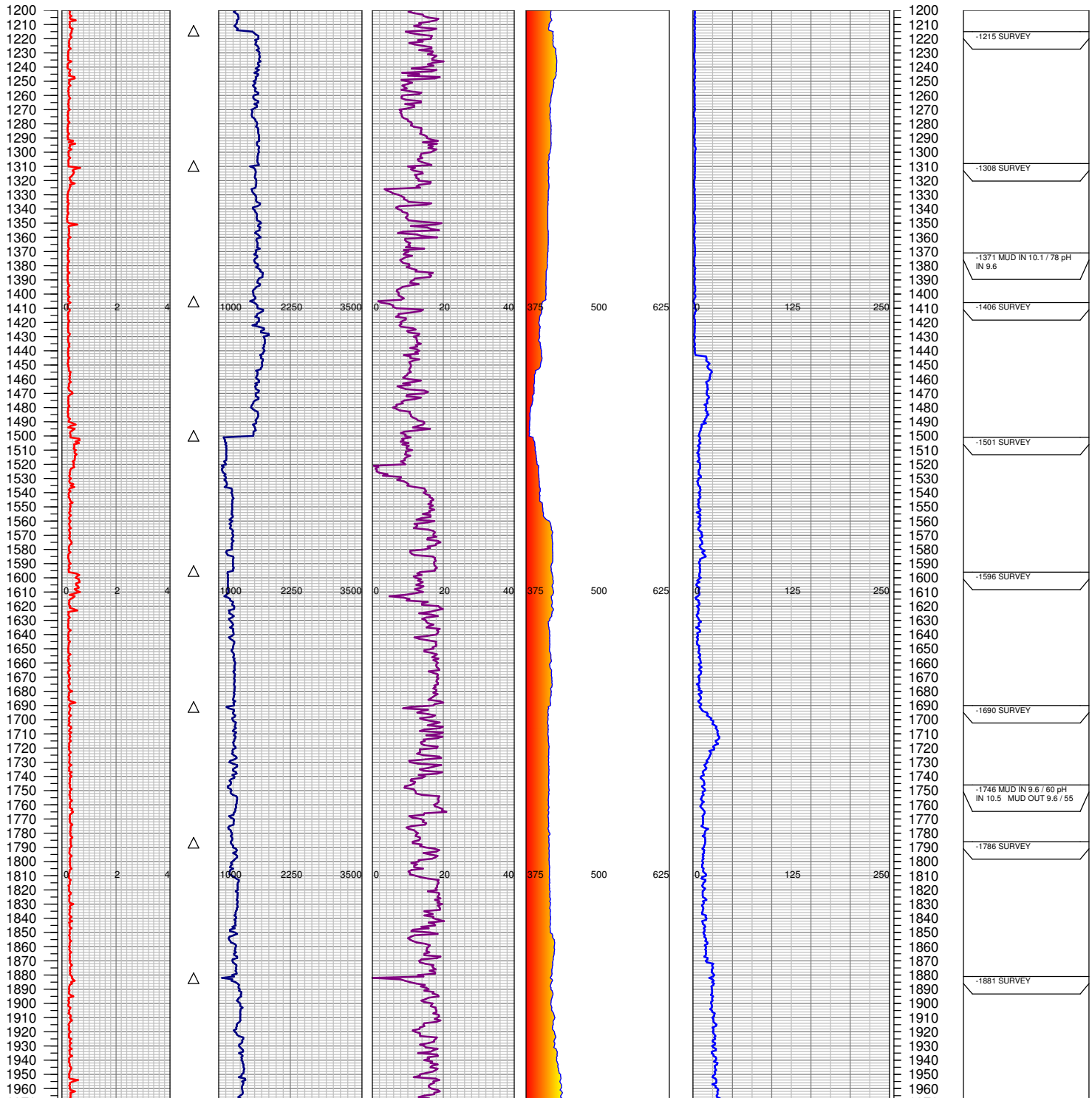
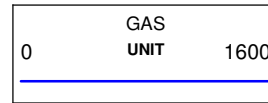
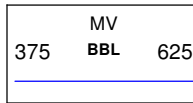
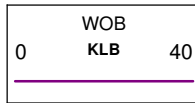
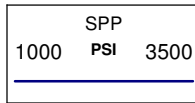
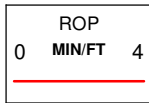
DEPTHS LOGGED: 1200'-8986'

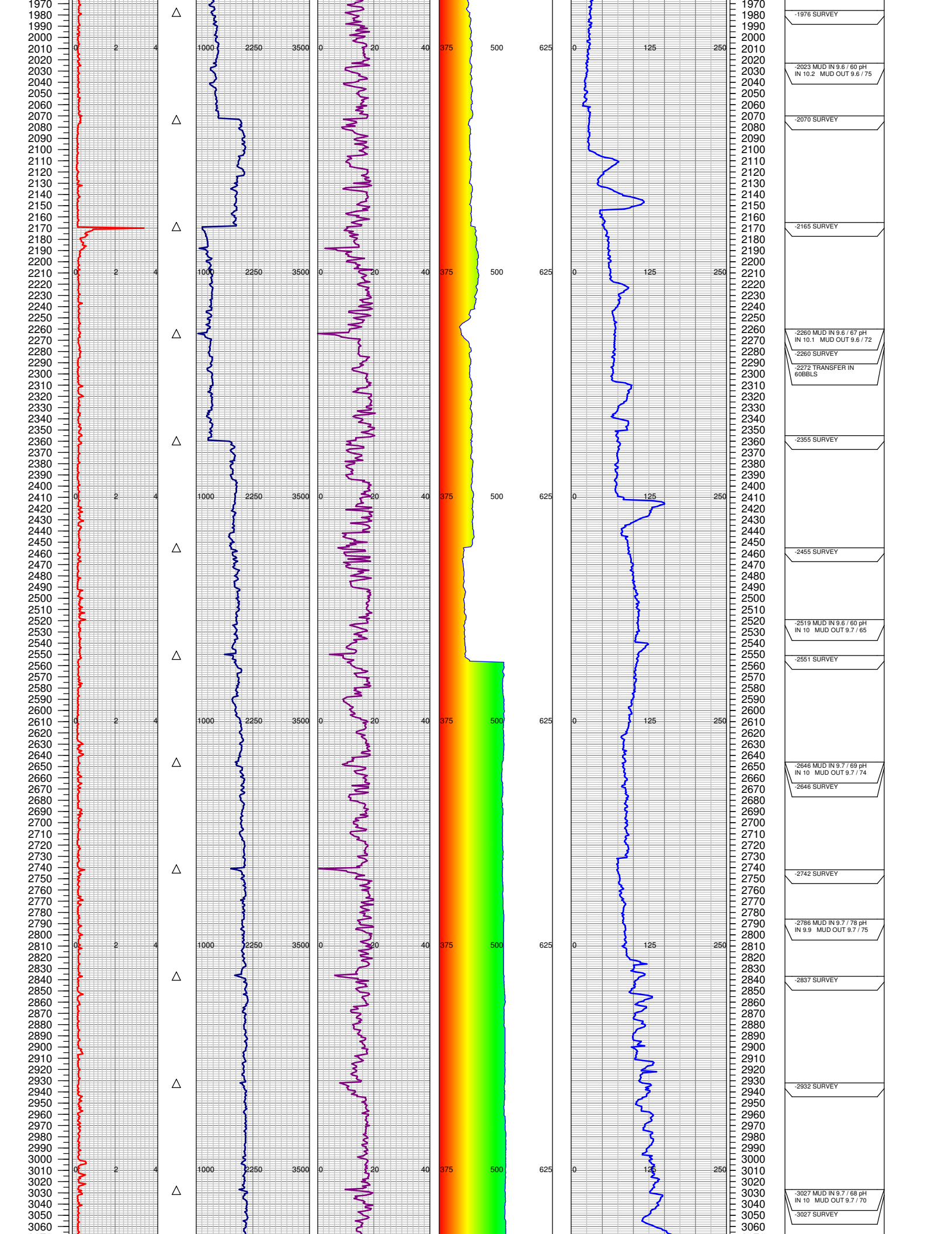
SPUD DATE: 6/3/2014

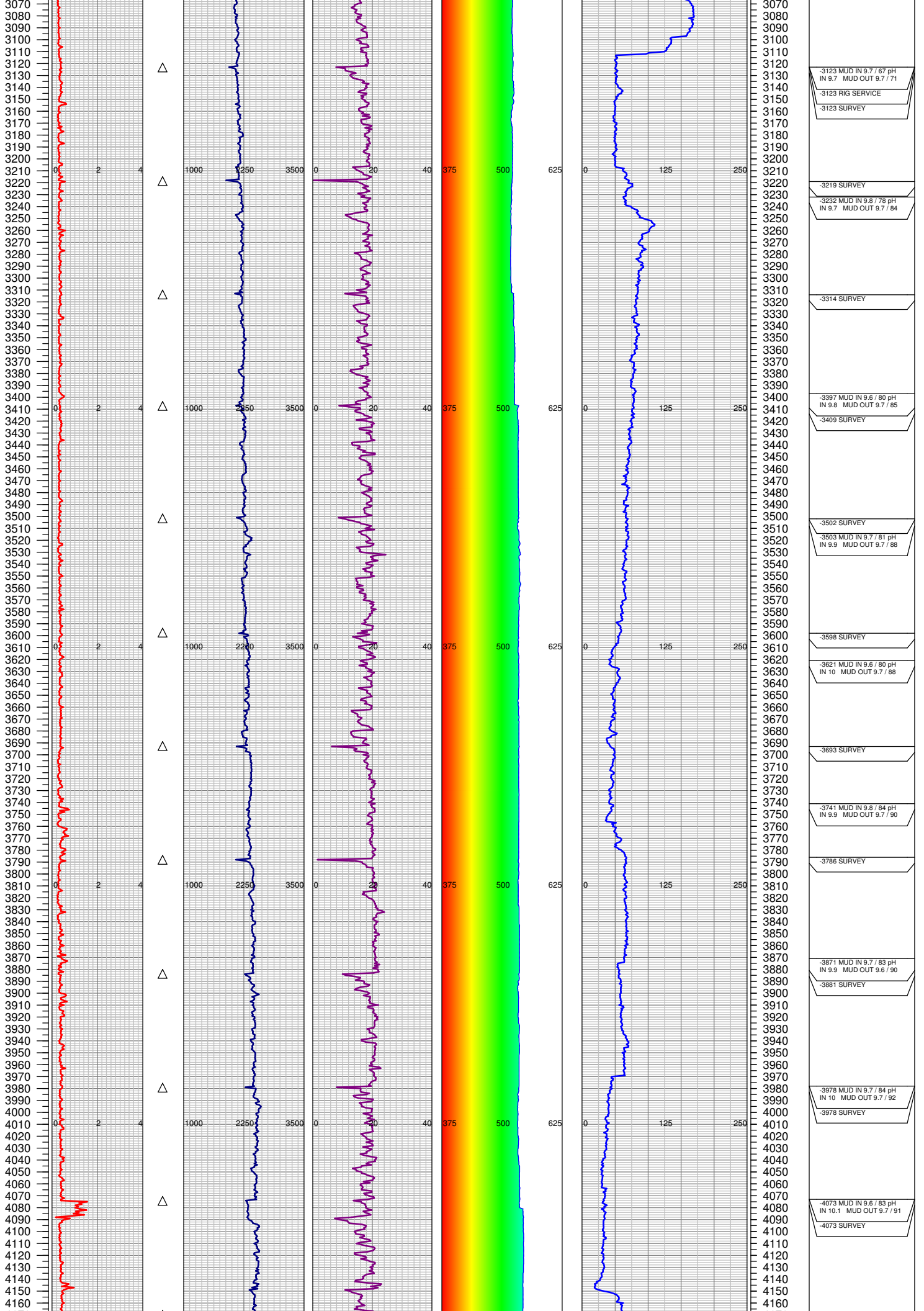
FGS BEGIN LOGGING: 6/5/2013

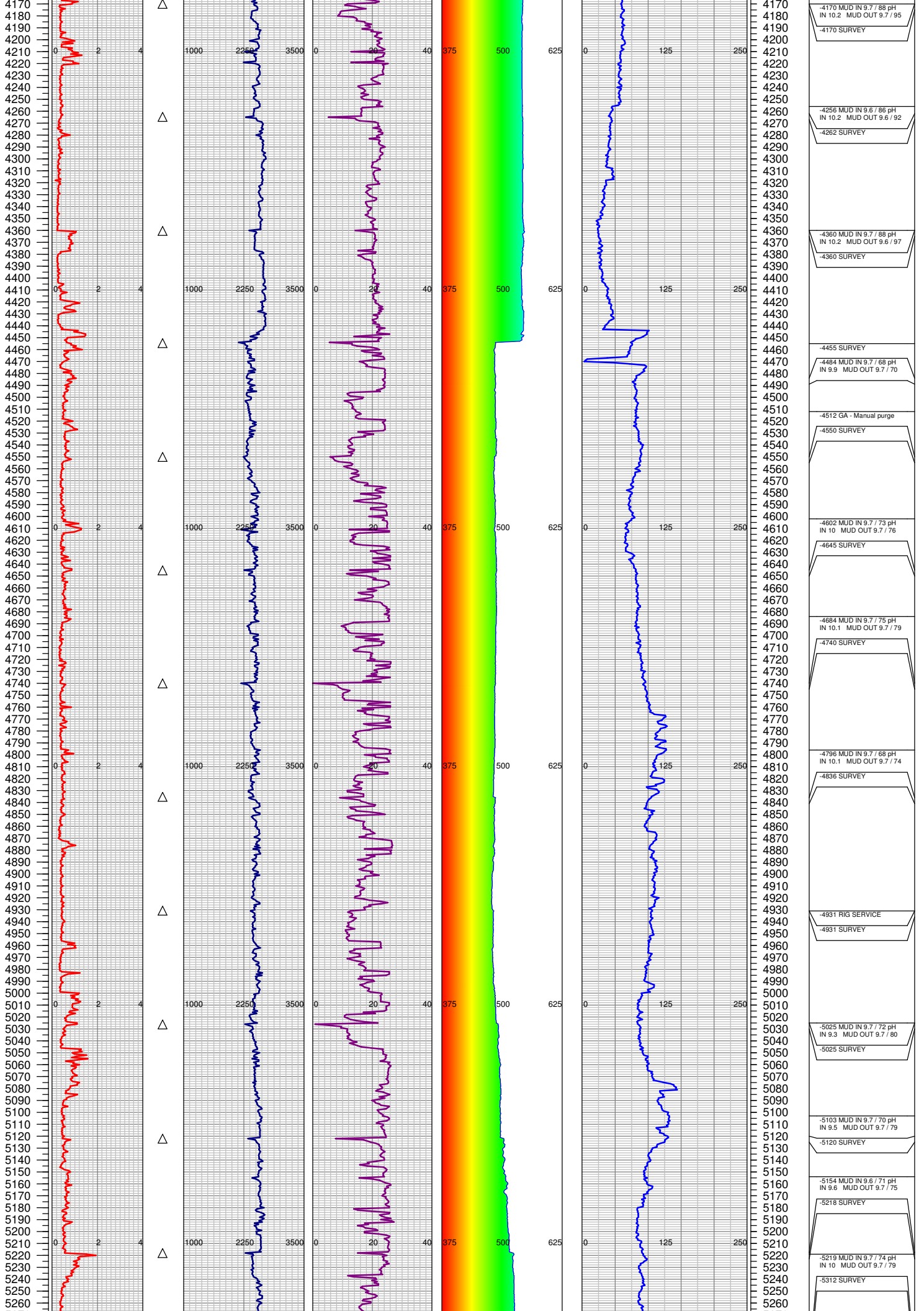
TD DATE: 6/13/2014

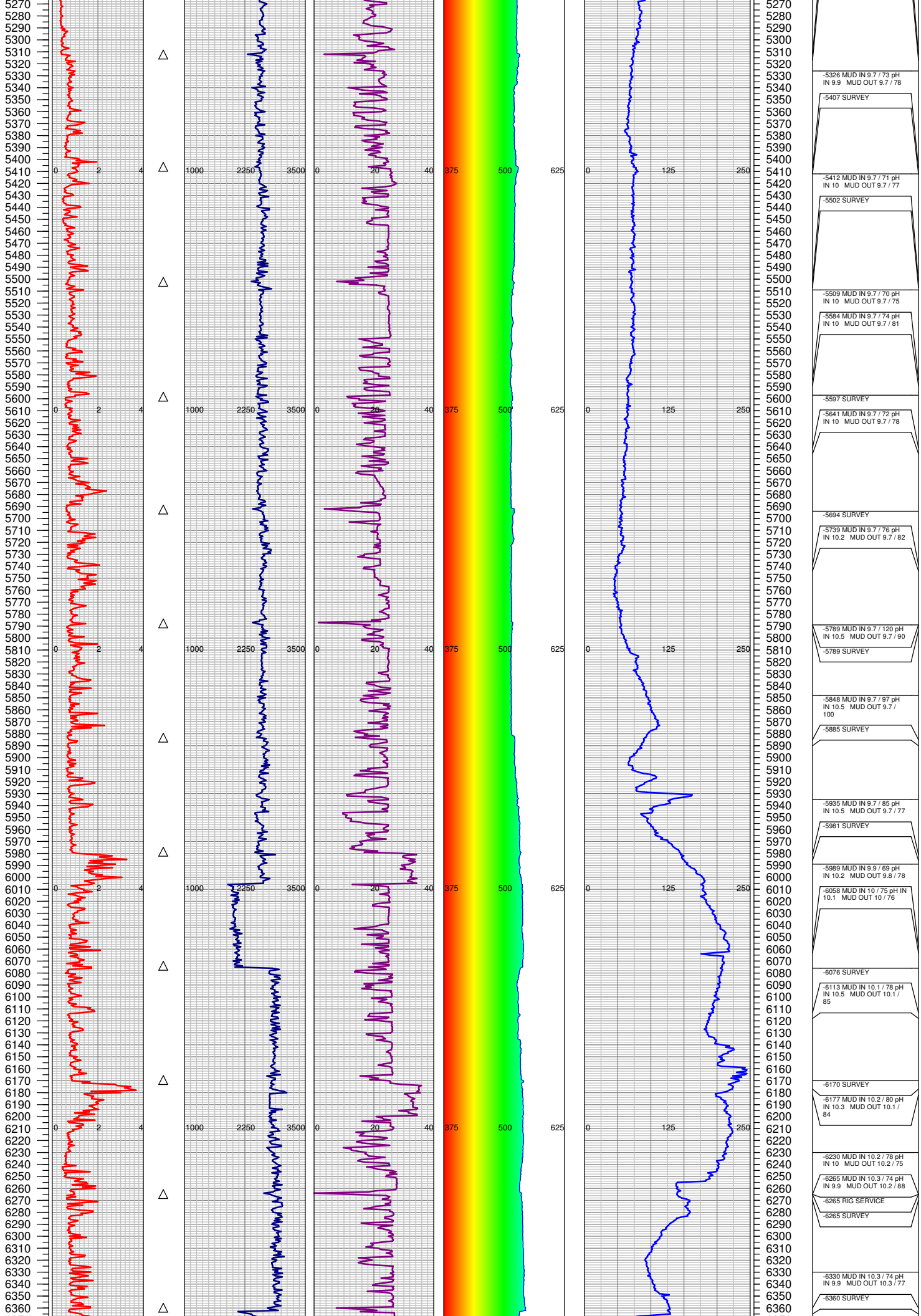
DATES LOGGED: 6/5/2014-6/13/2014

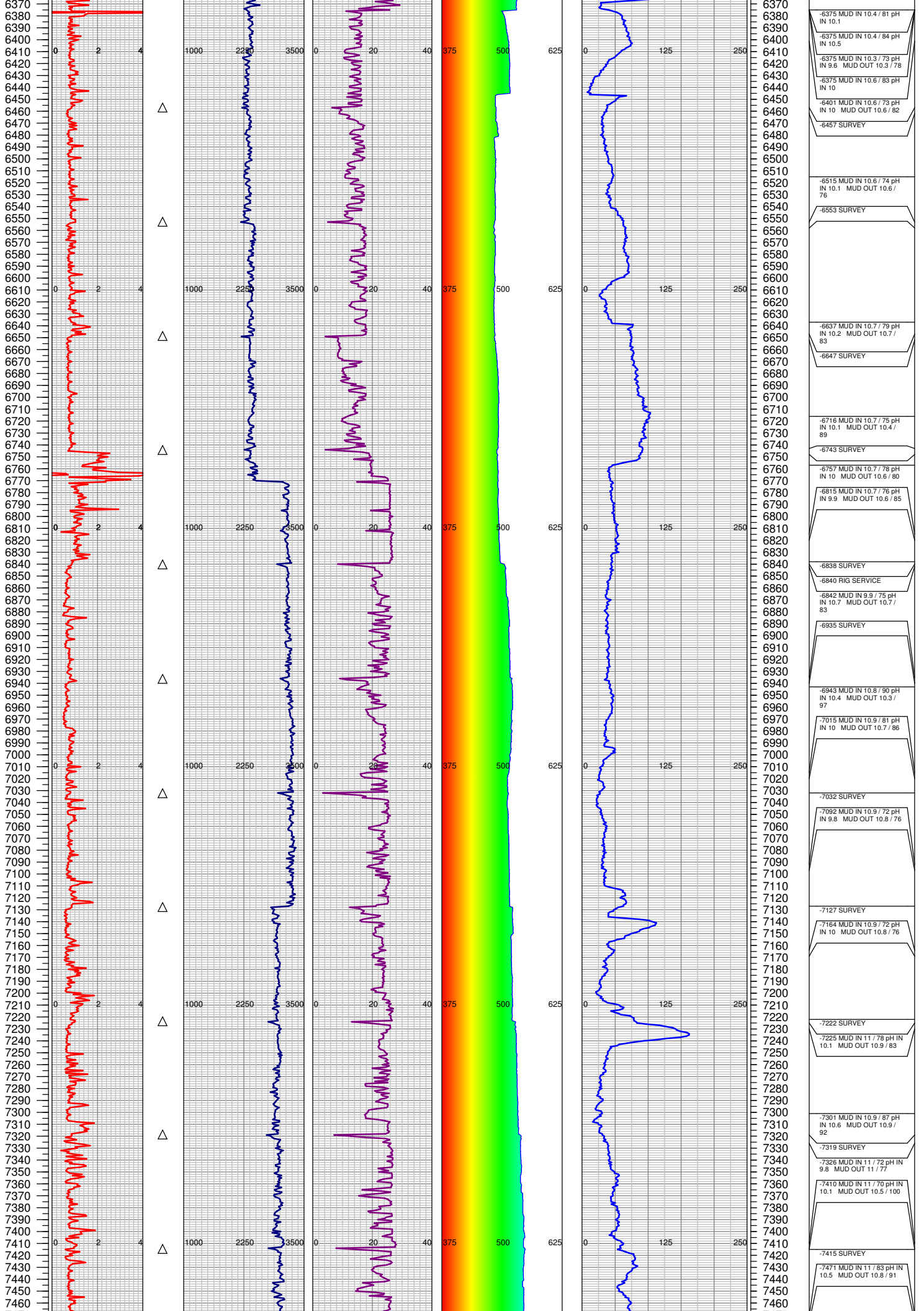


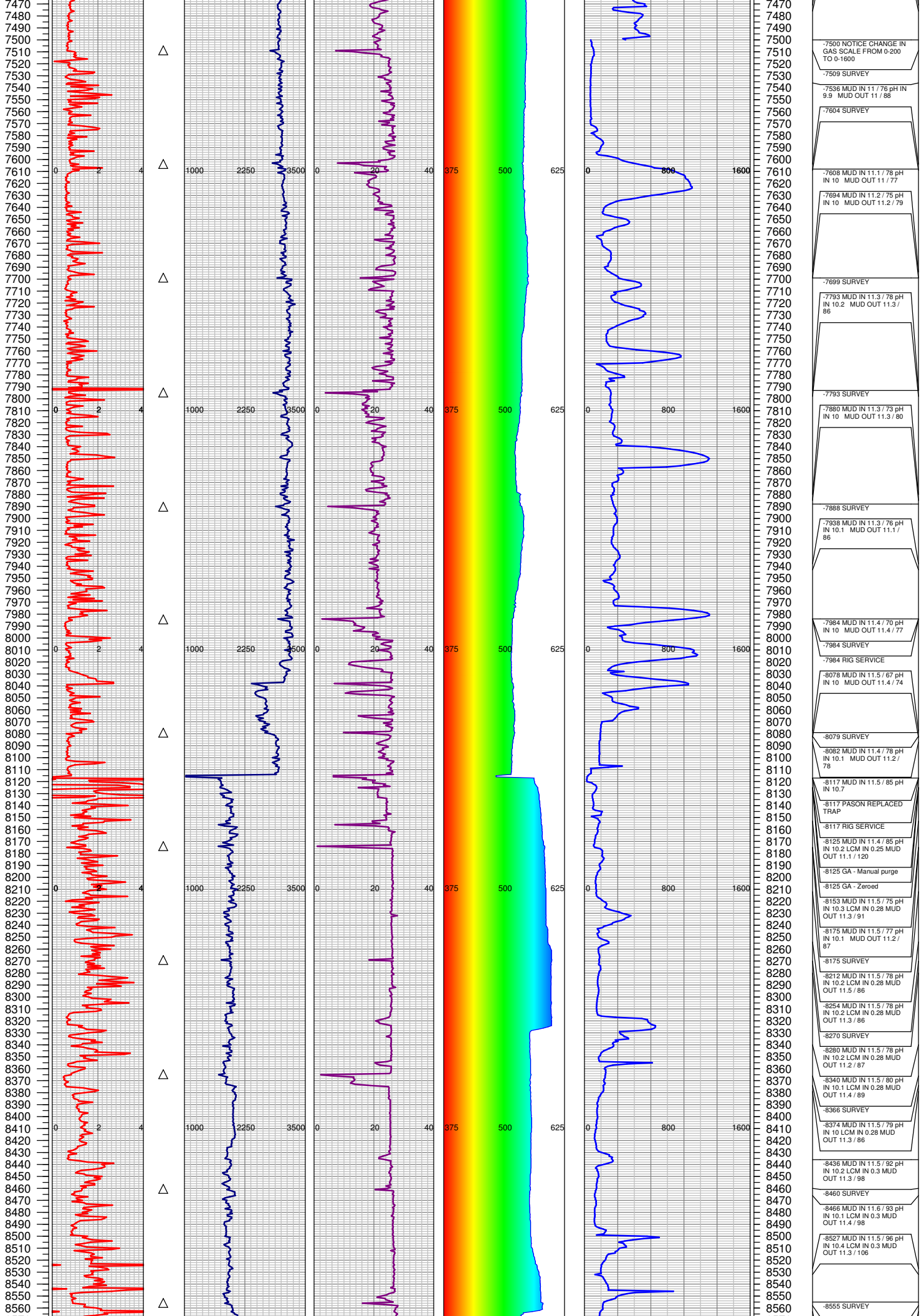












7500 NOTICE CHANGE IN
GAS SCALE FROM 0-200
TO 0-1600

7509 SURVEY

7536 MUD IN 11 / 76 pH IN
9.9 MUD OUT 11 / 88

7604 SURVEY

7608 MUD IN 11.1 / 78 pH
IN 10 MUD OUT 11 / 77

7684 MUD IN 11.2 / 75 pH
IN 10 MUD OUT 11.2 / 79

7699 SURVEY

7793 MUD IN 11.3 / 78 pH
IN 10.2 MUD OUT 11.3 /
86

7793 SURVEY

7880 MUD IN 11.3 / 73 pH
IN 10 MUD OUT 11.3 / 80

7888 SURVEY

7938 MUD IN 11.3 / 76 pH
IN 10.1 MUD OUT 11.1 /
86

7984 MUD IN 11.4 / 70 pH
IN 10 MUD OUT 11.4 / 77

7984 SURVEY

7984 RIG SERVICE

8078 MUD IN 11.5 / 67 pH
IN 10 MUD OUT 11.4 / 74

8079 SURVEY

8082 MUD IN 11.4 / 78 pH
IN 10.1 MUD OUT 11.2 /
78

8117 MUD IN 11.5 / 85 pH
IN 10.7

8117 PASON REPLACED
TRAP

8117 RIG SERVICE

8125 MUD IN 11.4 / 85 pH
IN 10.2 LCM IN 0.25 MUD
OUT 11.1 / 120

8125 GA - Manual purge

8125 GA - Zeroed

8153 MUD IN 11.5 / 75 pH
IN 10.3 LCM IN 0.28 MUD
OUT 11.3 / 91

8175 MUD IN 11.5 / 77 pH
IN 10.1 MUD OUT 11.2 /
87

8175 SURVEY

8212 MUD IN 11.5 / 78 pH
IN 10.2 LCM IN 0.28 MUD
OUT 11.5 / 86

8254 MUD IN 11.5 / 78 pH
IN 10.2 LCM IN 0.28 MUD
OUT 11.3 / 86

8270 SURVEY

8280 MUD IN 11.5 / 78 pH
IN 10.2 LCM IN 0.28 MUD
OUT 11.2 / 87

8340 MUD IN 11.5 / 80 pH
IN 10.1 LCM IN 0.28 MUD
OUT 11.4 / 89

8366 SURVEY

8374 MUD IN 11.5 / 79 pH
IN 10 LCM IN 0.28 MUD
OUT 11.3 / 86

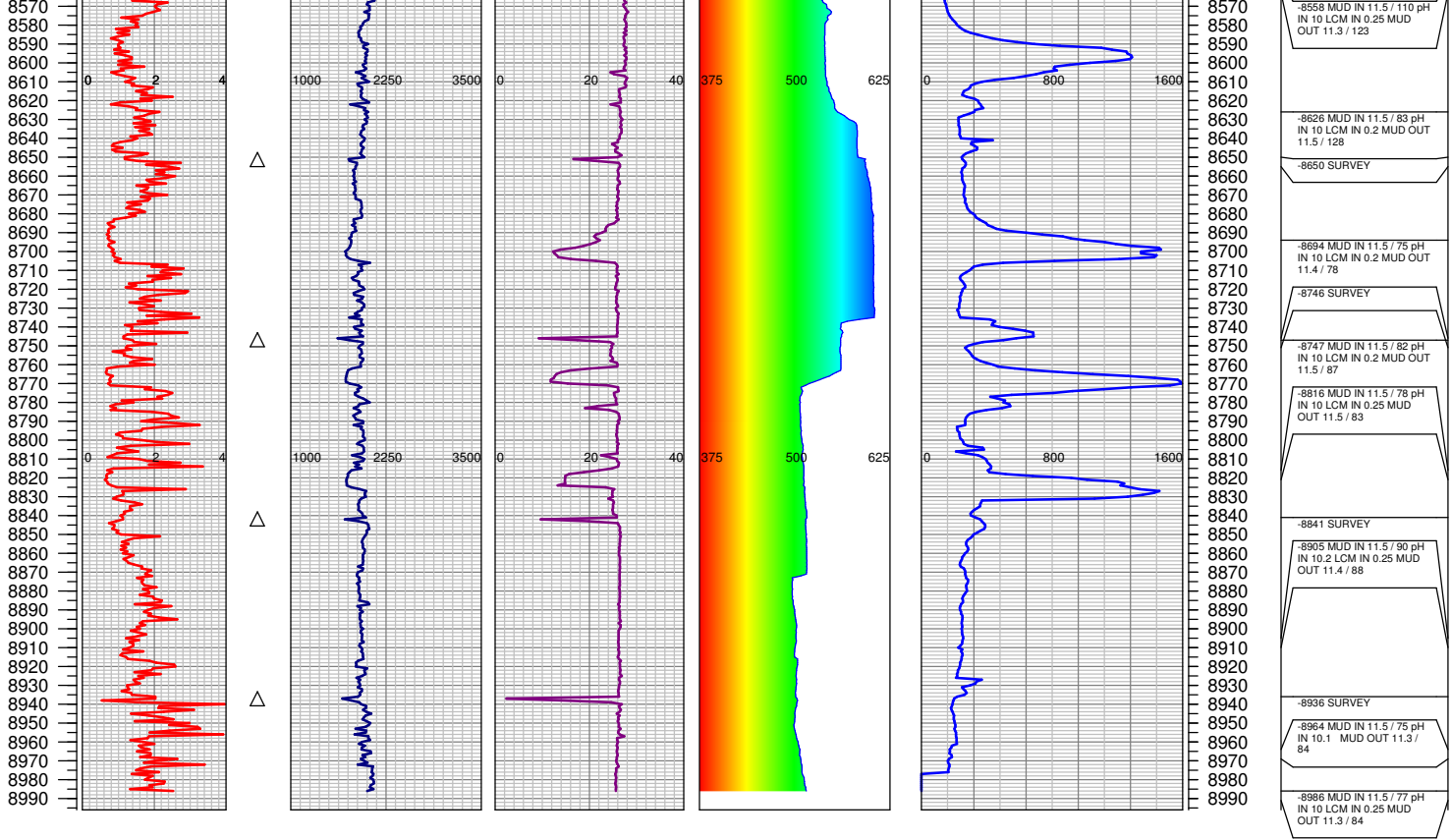
8436 MUD IN 11.5 / 92 pH
IN 10.2 LCM IN 0.3 MUD
OUT 11.3 / 98

8460 SURVEY

8466 MUD IN 11.6 / 93 pH
IN 10.1 LCM IN 0.3 MUD
OUT 11.4 / 98

8527 MUD IN 11.5 / 96 pH
IN 10.4 LCM IN 0.3 MUD
OUT 11.3 / 106

8555 SURVEY



TOTAL DEPTH = 8986'

FGS RELEASED: 6/13/2014