



FILE NO: US087671	COMPANY WPX ENERGY
API NO: 05045220010000	WELL Savage RWF 443-25
	FIELD RULISON
	COUNTY GARFIELD
	STATE CO
Ver. 3.87 S25 T6S R94W PAD: RWF 43-25 NABORS 577	LOCATION: SHL: 1185' FSL 1382' FEL BHL: 2122' FSL 606' FEL SEC 25 TWP 6S RGE 94W
PERMANENT DATUM LOG MEASURED FROM DRILL. MEAS. FROM	OTHER SERVICES CBL ELEVATIONS: KB 6260 FT DF GL 6234 FT
GL KB KB	ELEVATION 6234 FT 26 FT ABOVE P.D.

DATE	01-Jul-2014
RUN	1
TRIP	1
SERVICE ORDER	US087671
DEPTH DRILLER	8942 FT
DEPTH LOGGER	8920 FT
BOTTOM LOGGED INTERVAL	8910 FT
TOP LOGGED INTERVAL	4620 FT
TIME STARTED	12:00
TIME FINISHED	18:00
OPERATOR RIG TIME	4.5
TYPE OF FLUID IN HOLE	WATER
FLUID DENSITY	NA
FLUID SALINITY	NA
FLUID LEVEL	83 FT
LOGGED CEMENT TOP	NA
WELLHEAD PRESSURE	0 PSI
MAXIMUM HOLE DEVIATION	NA
NOMINAL LOGGING SPEED	65 FMN
MAX. RECORDED TEMP.	221 DEGF
REFERENCE LOG	NA
REFERENCE LOG DATE	NA
EQUIP. NO.	6670
LOCATION	GRAND JCT
RECORDED BY	D SMITH
WITNESSED BY	B CADY

IN MAKING INTERPRETATIONS OF LOGS OUR EMPLOYEES WILL GIVE THE CUSTOMER THE BENEFIT OF THEIR BEST JUDGEMENT. BUT SINCE ALL INTERPRETATIONS ARE OPINIONS BASED ON INFERENCES FROM ELECTRICAL OR OTHER MEASUREMENTS, WE CANNOT, AND WE DO NOT GUARANTEE THE ACCURACY OR CORRECTNESS OF ANY INTERPRETATION. WE SHALL NOT BE LIABLE OR RESPONSIBLE FOR ANY LOSS, COST, DAMAGES, OR EXPENSES WHATSOEVER INCURRED OR SUSTAINED BY THE CUSTOMER RESULTING FROM ANY INTERPRETATION MADE BY ANY OF OUR EMPLOYEES.

BOREHOLE RECORD		
BIT SIZE	FROM	TO
13.5 IN	0 FT	1119 FT
8.75 IN	1119 FT	8942 FT

CASING RECORD				
SIZE	WEIGHT	GRADE	FROM	TO
9.625 IN	32.2 LB/F		0 FT	1119 FT
4.5 IN	11.6 LB/F		1119 FT	8942 FT

REMARKS

RUN 1 TRIP 1: ALL DATA ON THIS LOG IS SHIFTED USING THE CCL CURVE TO PLACE THE WELLHEAD (TOP CCL MARK) ON DEPTH WITH GROUND LEVEL ELEVATION AT CLIENT'S REQUEST

THE DEPTH MATCHING PROCESS CREATES POTENTIAL FOR COLLAR LENGTHS TO VARY FROM THOSE RECORDED ON OTHER CASED HOLE WIRELINE UNITS WITHOUT GAMMA RAY REFERENCE

AMOUNT LINEAR SHIFT: -2.0 ft

LOGGED WITH 0 PSI AT WELL HEAD

BHT = 221 DEGF

SJ = 5420' TO 5440'

THANK YOU FOR CHOOSING BAKER HUGHES WIRELINE SERVICES

CREW: SMITH/FAVORITE/COATE

EQUIPMENT DATA

RUN	TRIP	TOOL	SERIES NO.	SERIAL NO.	POSITION
1	1	ELECTRONICS	8250EA	10314363	FREE
1	1	TELE	8248ED	Z120493	FREE
1	1	GR	8262xa	10317216	FREE
1	1	RPM	8281EA	10273848	FREE
1	1	RPM	8283PA	10585555	FREE
1	1	RPM	8281FA	10307727	FREE
1	1	TEMP	8255XA	11774568	FREE

MAIN LOG 5"/100FT SCALE

ECLIPS 6.2i ECLIPS General Release Rel 6.2i Wed Jun 12 12:21:40 CDT 2013

Updates: 1

Plotted: Fri Jul 4 15:31:22 2014

PARAMETER AND FILTER SUMMARY REPORT

FILE: /dat1a/CH087671/n353h02.prm
LOGGING MODE: DEPTH DIRECTION: UP
TOP DEPTH: 4605.875 ft BOTTOM DEPTH: 8927.268 ft

SYMMETRIC FILTER

MEASUREMENT TYPE	PARAMETER	VALUE	UNITS	INTERVAL (ft)
GR	FILTER ()	medium (1)		TOP BOTTOM

RPM PROCESSING

MEASUREMENT TYPE	PARAMETER	VALUE	UNITS	INTERVAL (ft)
PNC Parameters	BOREHOLE CONTENTS	FLUID		TOP BOTTOM
	OPEN/CASED HOLE	CASED HOLE		" "
	BOREHOLE SIZE	8.75	in	" "
	CASING SIZE	4.50	in	" "
	MATRIX	SANDSTONE		" "
	CORRECTION BUFFER	11		" "

CURVE DESCRIPTION REPORT

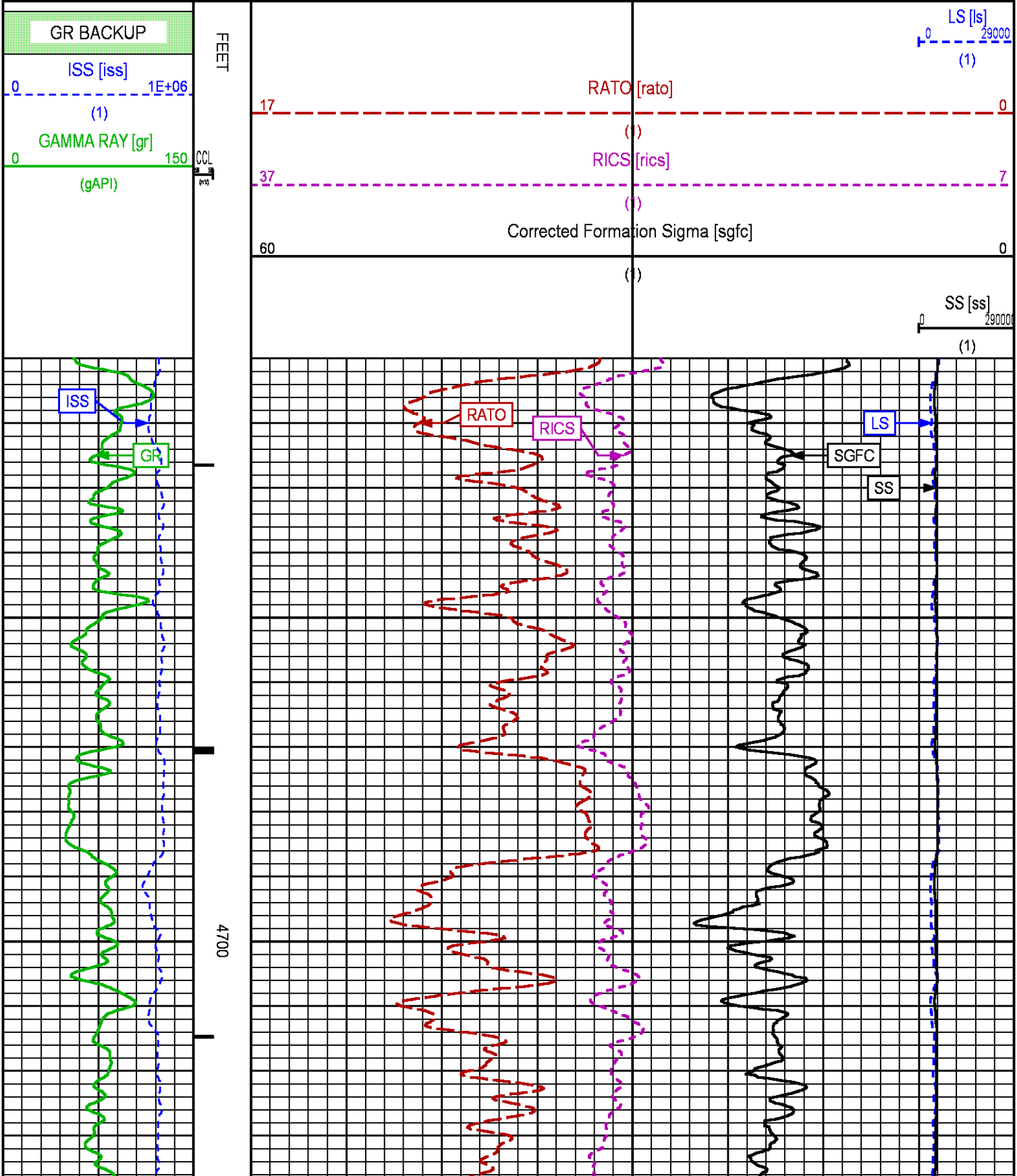
CURVE NAME	CREATION DATE	CURVE DESCRIPTION
F1:CCL	Jul 1 15:00:56 2014	CASING COLLAR LOCATOR
F1:GR	Jul 1 15:00:56 2014	GAMMA RAY
F1:ISS	Jul 1 15:00:56 2014	INELASTIC SHORT SPACE COUNT RATE
F1:LS	Jul 1 15:00:56 2014	LONG SPACE COUNT RATE
F1:RATO	Jul 1 15:00:56 2014	SHORT/LONG SPACE COUNT RATE RATIO
F1:RICS	Jul 1 15:00:56 2014	SHORT SPACE INELASTIC TO CAPTURE COUNT RATE RATIO (ISS/CSS)
F1:SGFC	Jul 1 15:00:56 2014	CORRECTED FORMATION SIGMA
F1:SS	Jul 1 15:00:56 2014	SHORT SPACE COUNT RATE

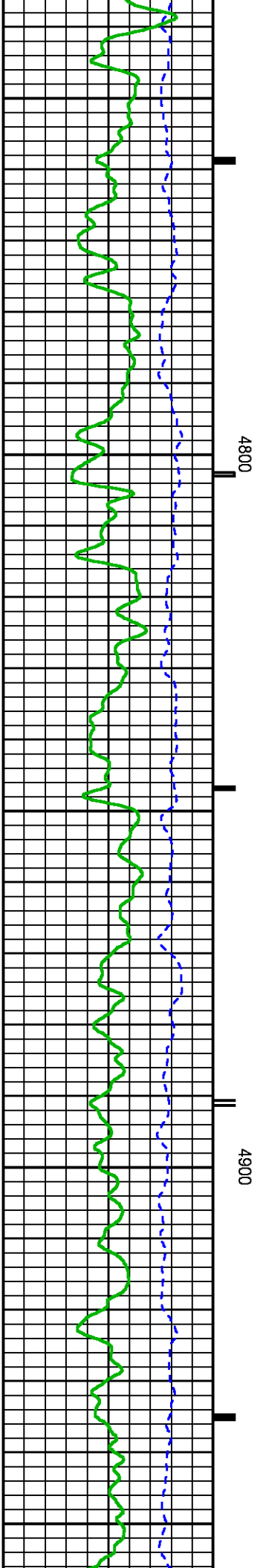
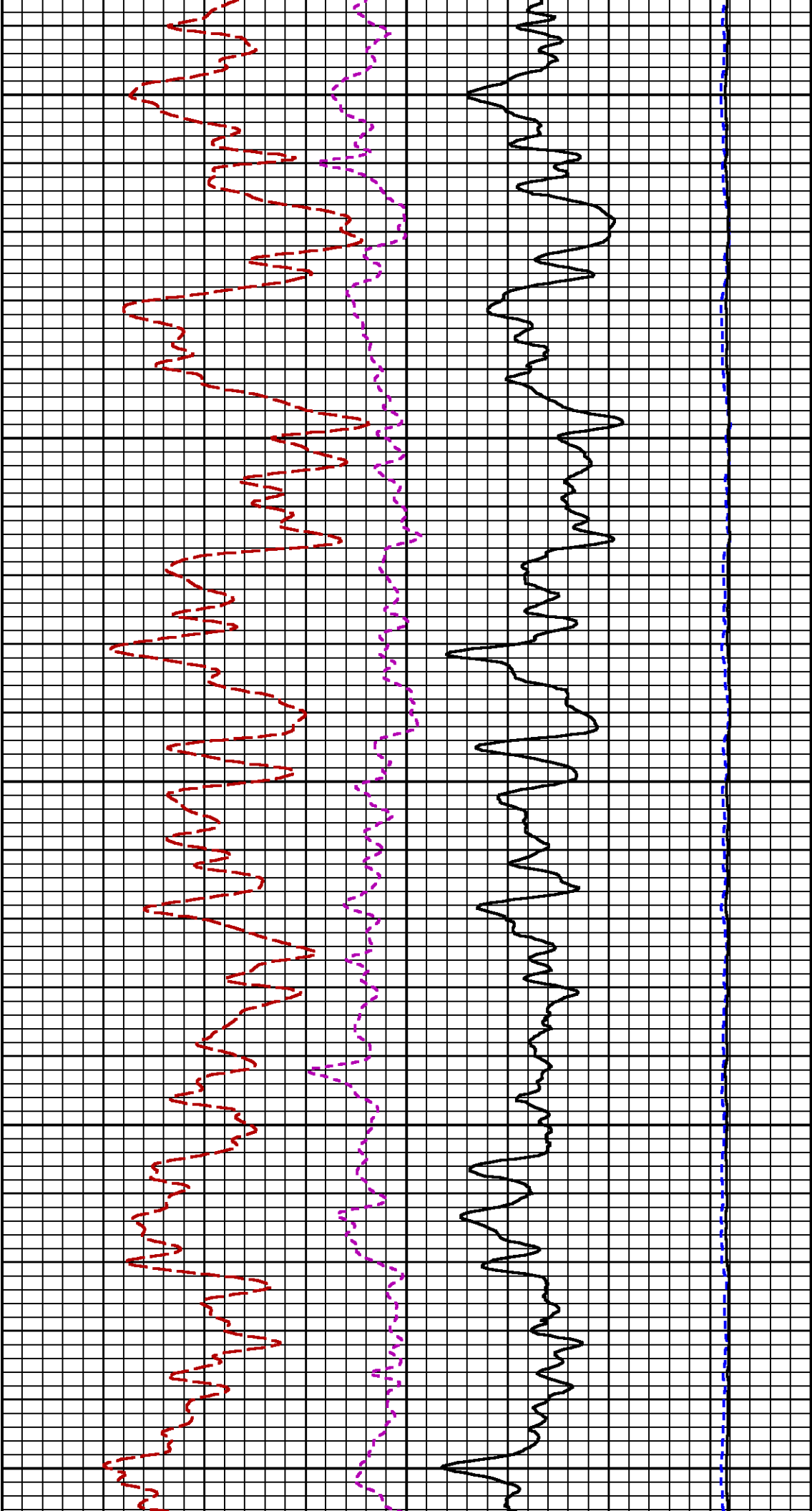
CURVE MEASURE POINT OFFSET

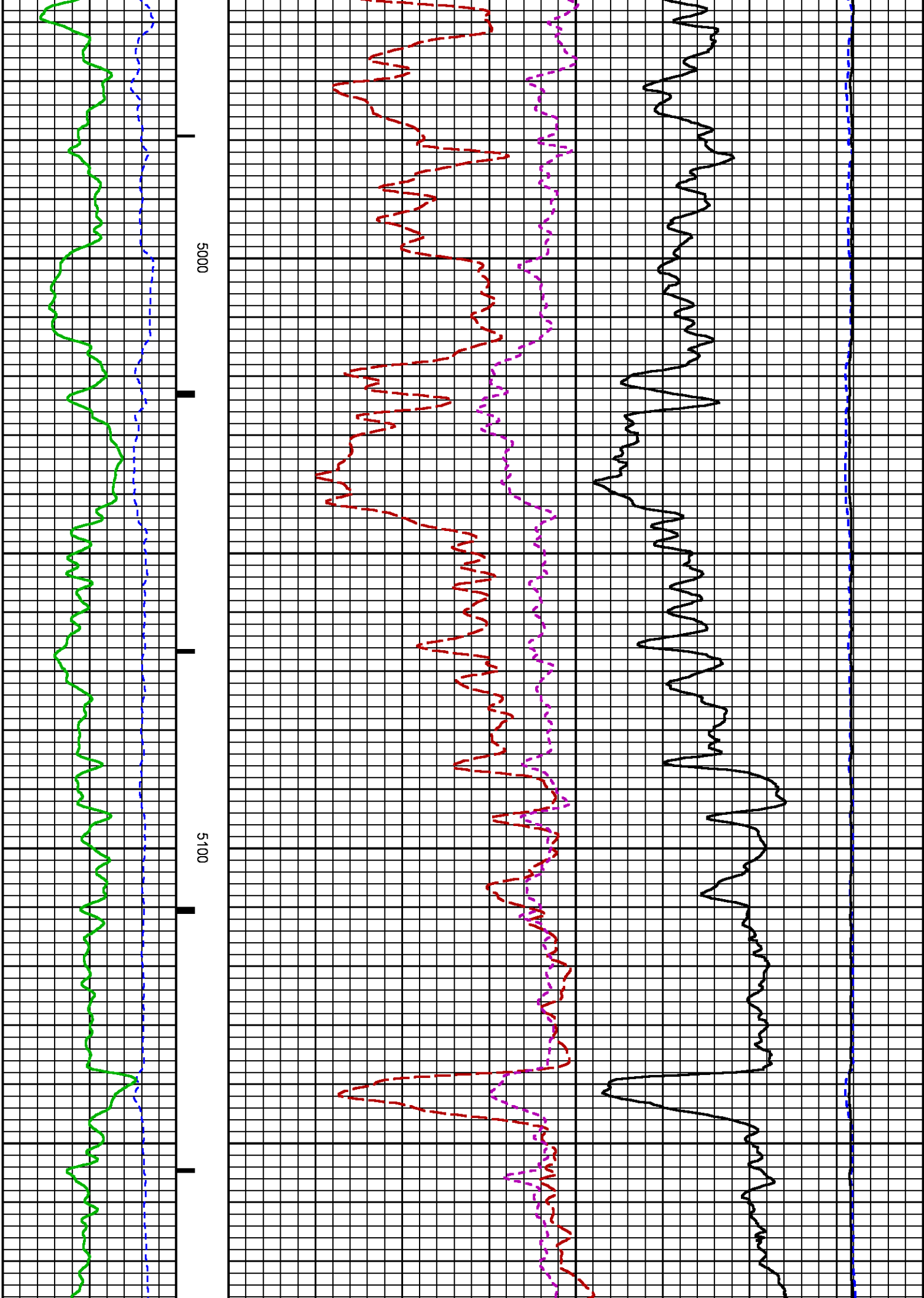
CURVE	OFFSET (ft)	CURVE	OFFSET (ft)	CURVE	OFFSET (ft)	CURVE	OFFSET (ft)
CCL	26.00	ISS	12.75	RATO	12.75	SGFC	12.75

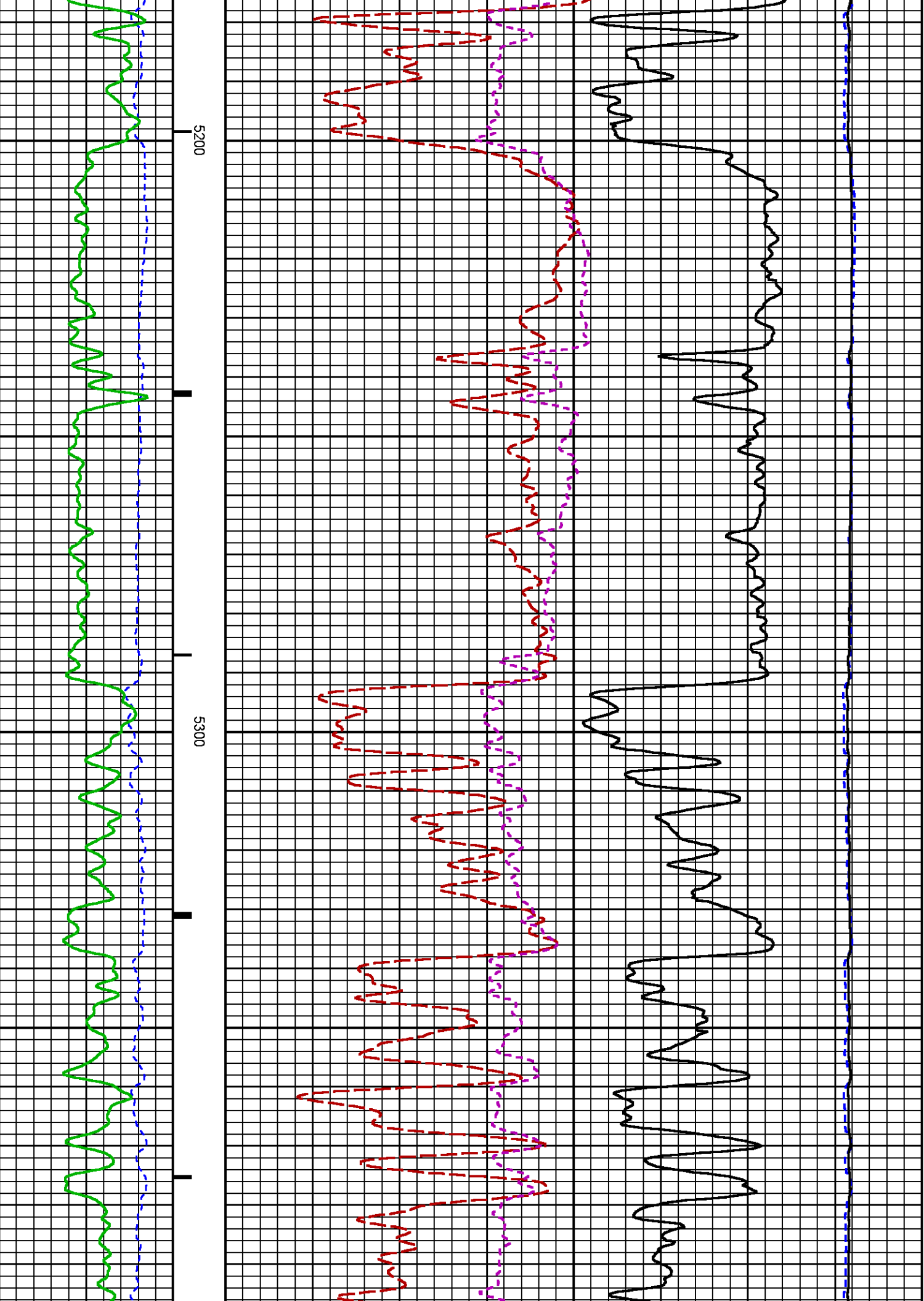
GR	23.00	LS	12.75	RICS	12.75	SS	12.75
----	-------	----	-------	------	-------	----	-------

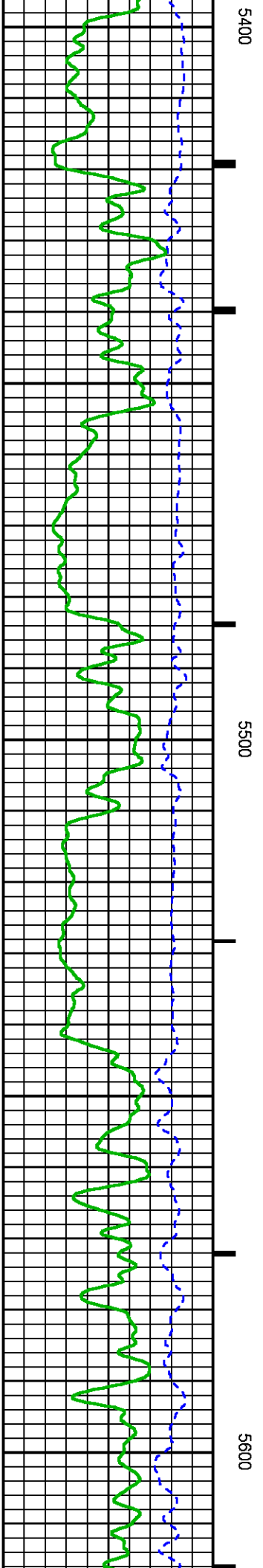
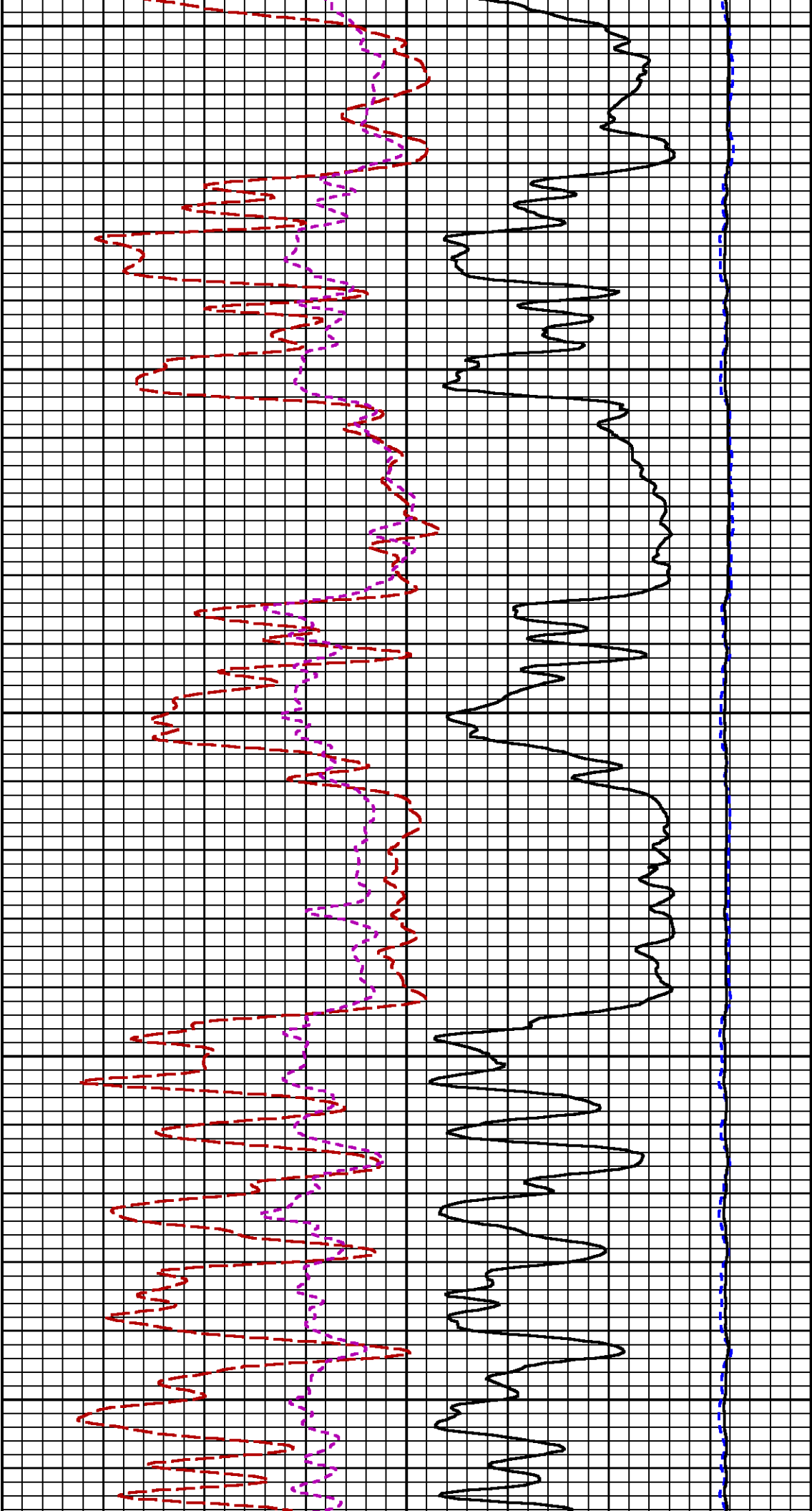
Presentation	: HL6670:WPX_rpm_pnc3D_FINAL.fvpdf [5"/100' Scale]
Plot Interval	: 4610 - 8923.75 Feet
Data File 1	: F1 : HL6670:/dat1a/CH087671/n353h02.xtf
Created On	: Jul 1 15:00:56 2014
Company	: WPX ENERGY
Well	: SAVAGE RWF 443-25
Field	: RULISON
File Interval	: 22 - 8923.75 Feet
OCT	: n353h

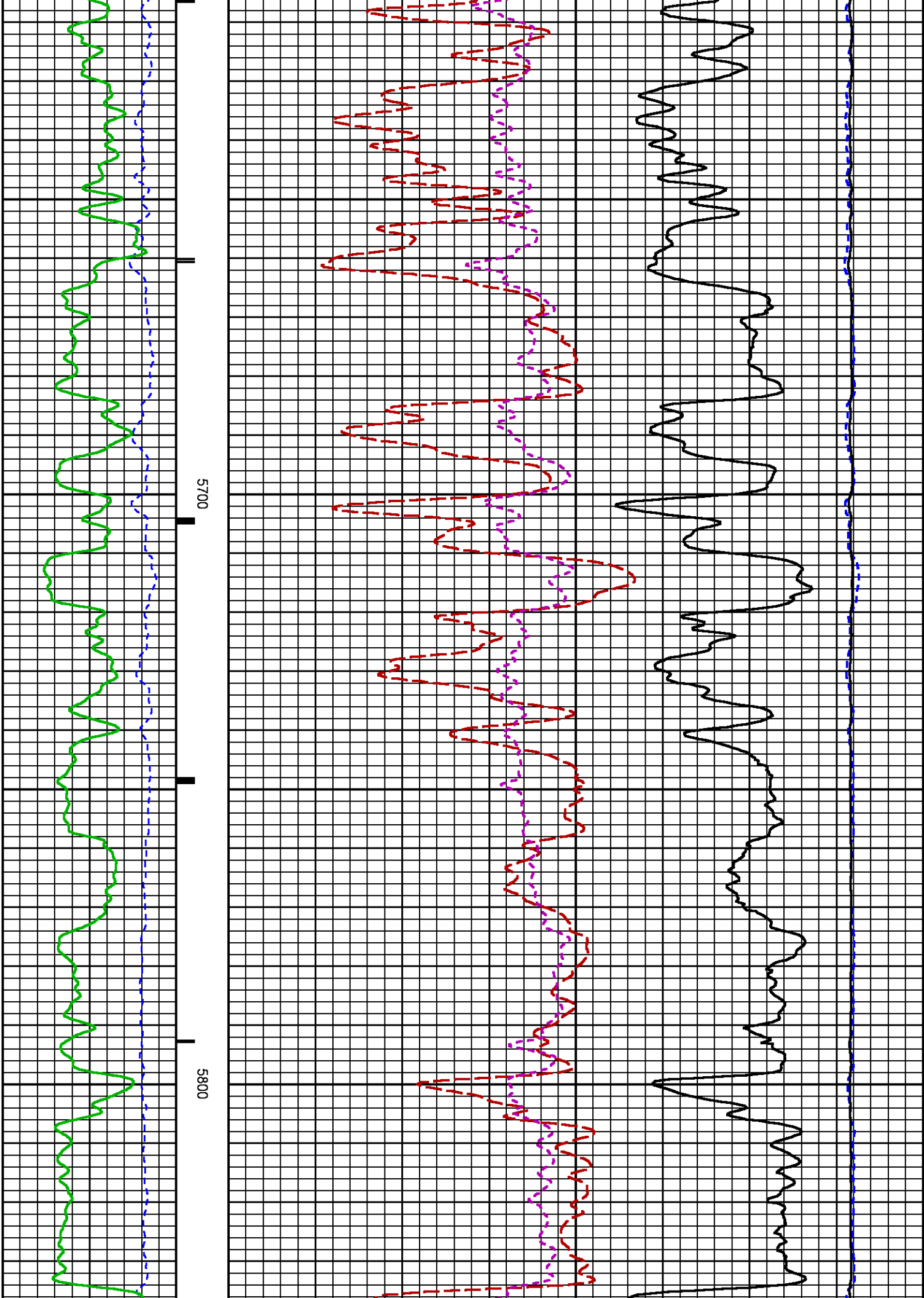


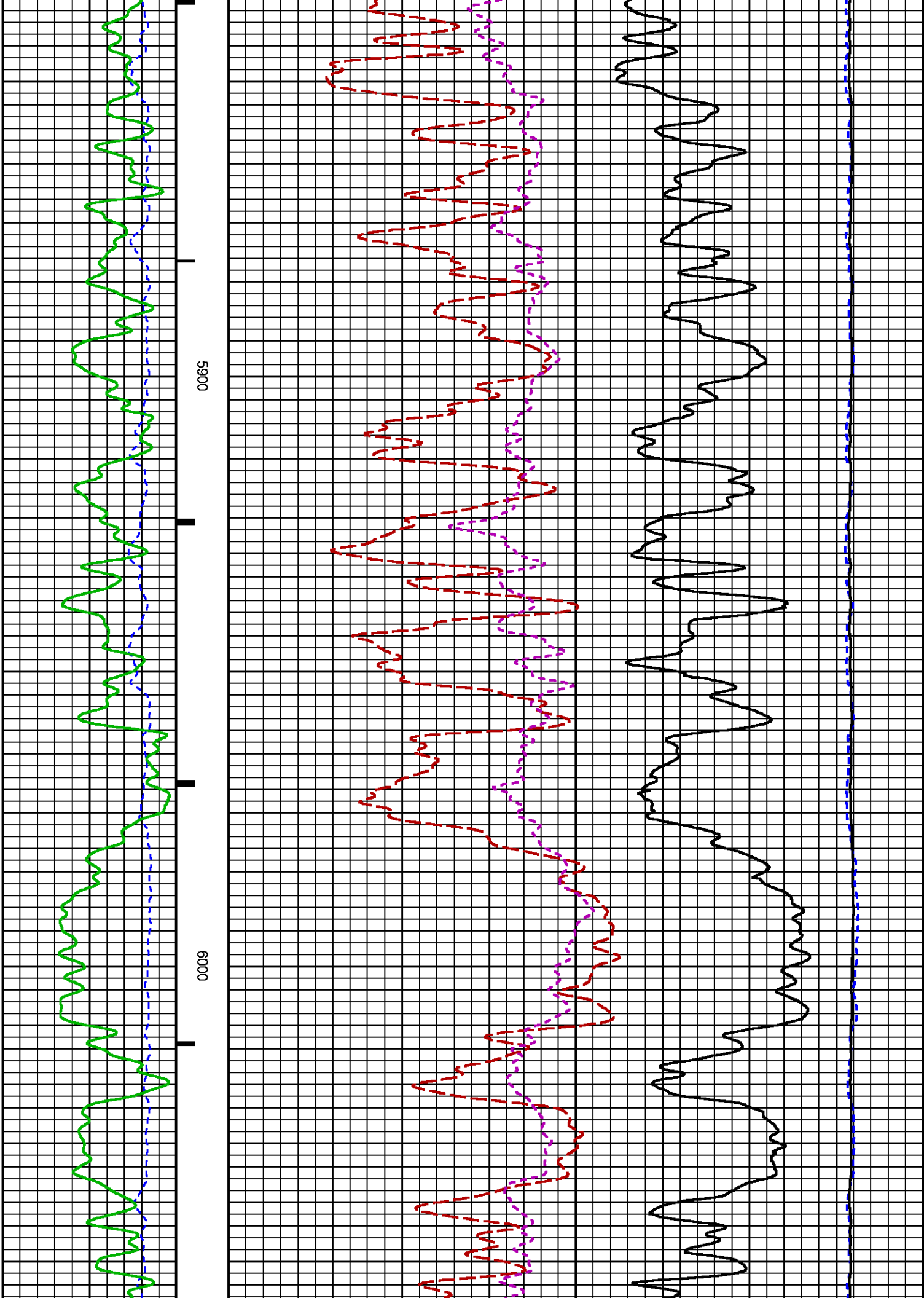


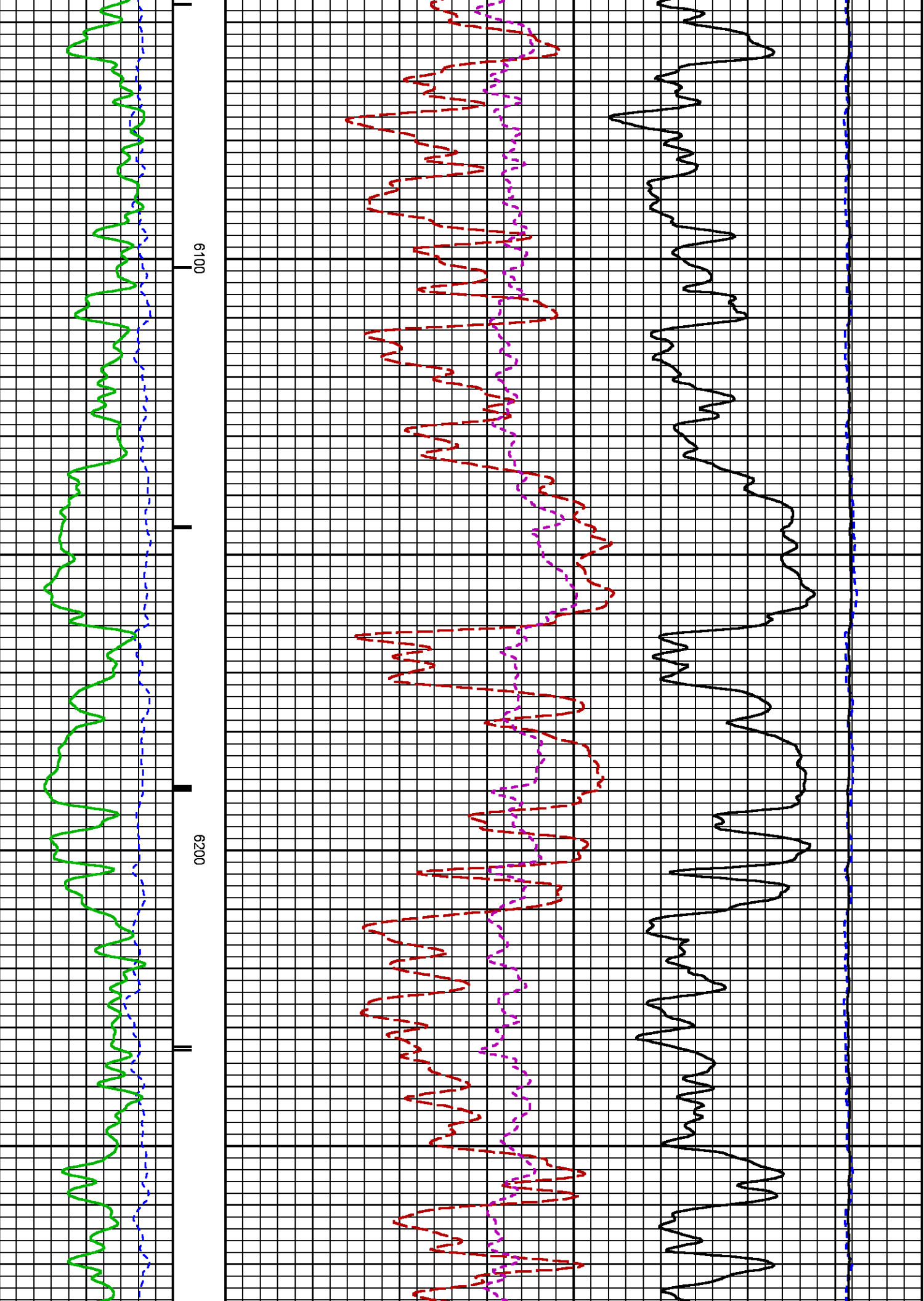


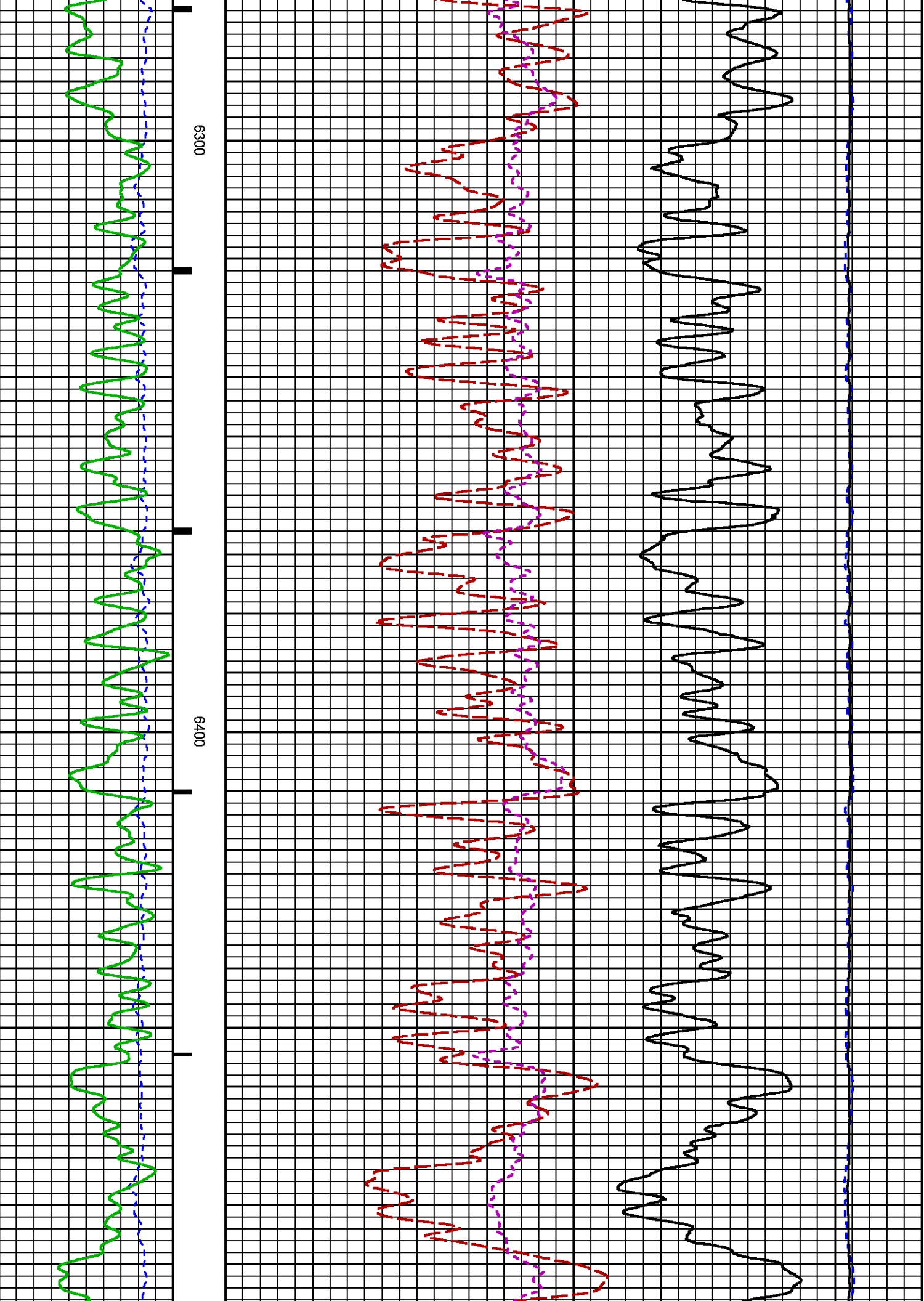


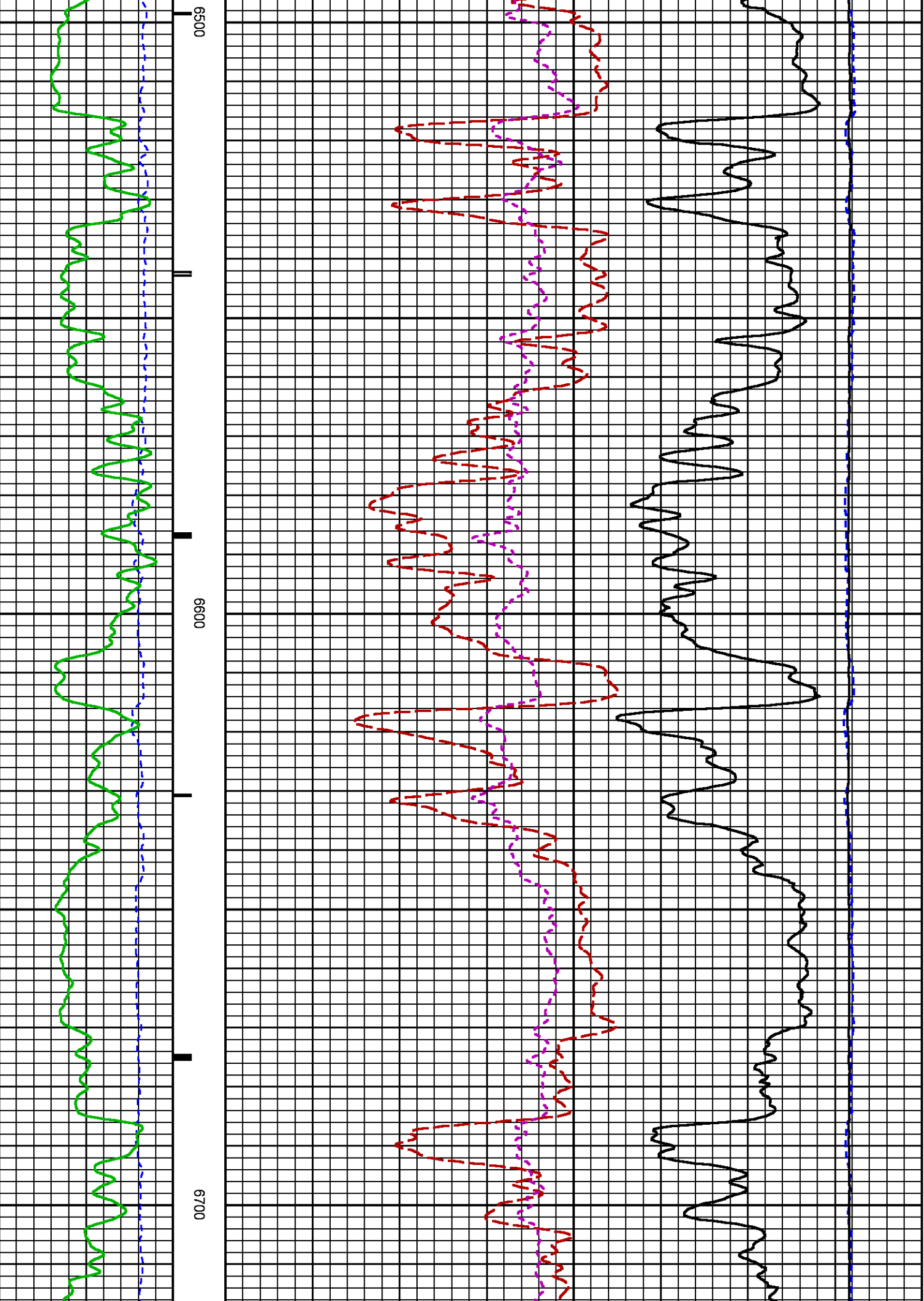


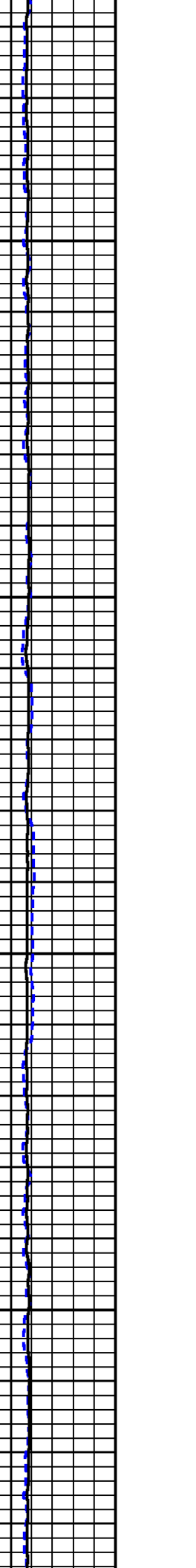
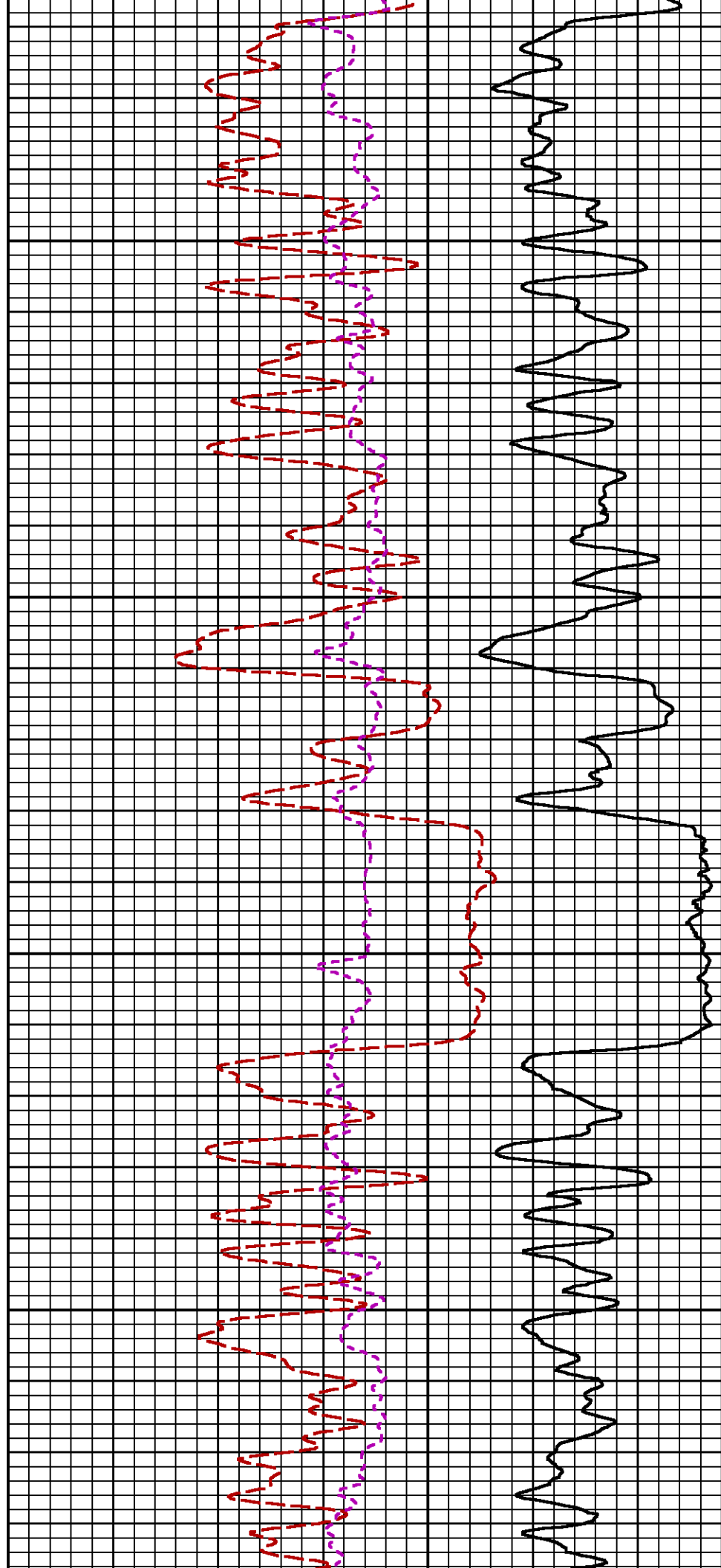
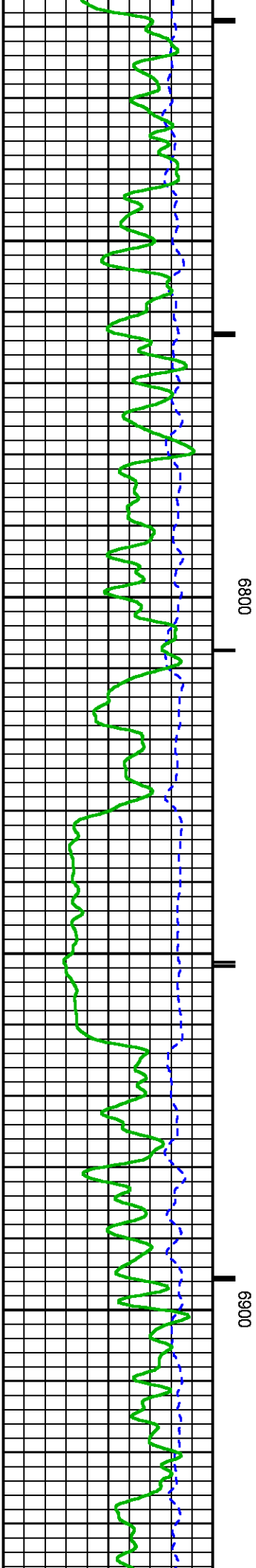


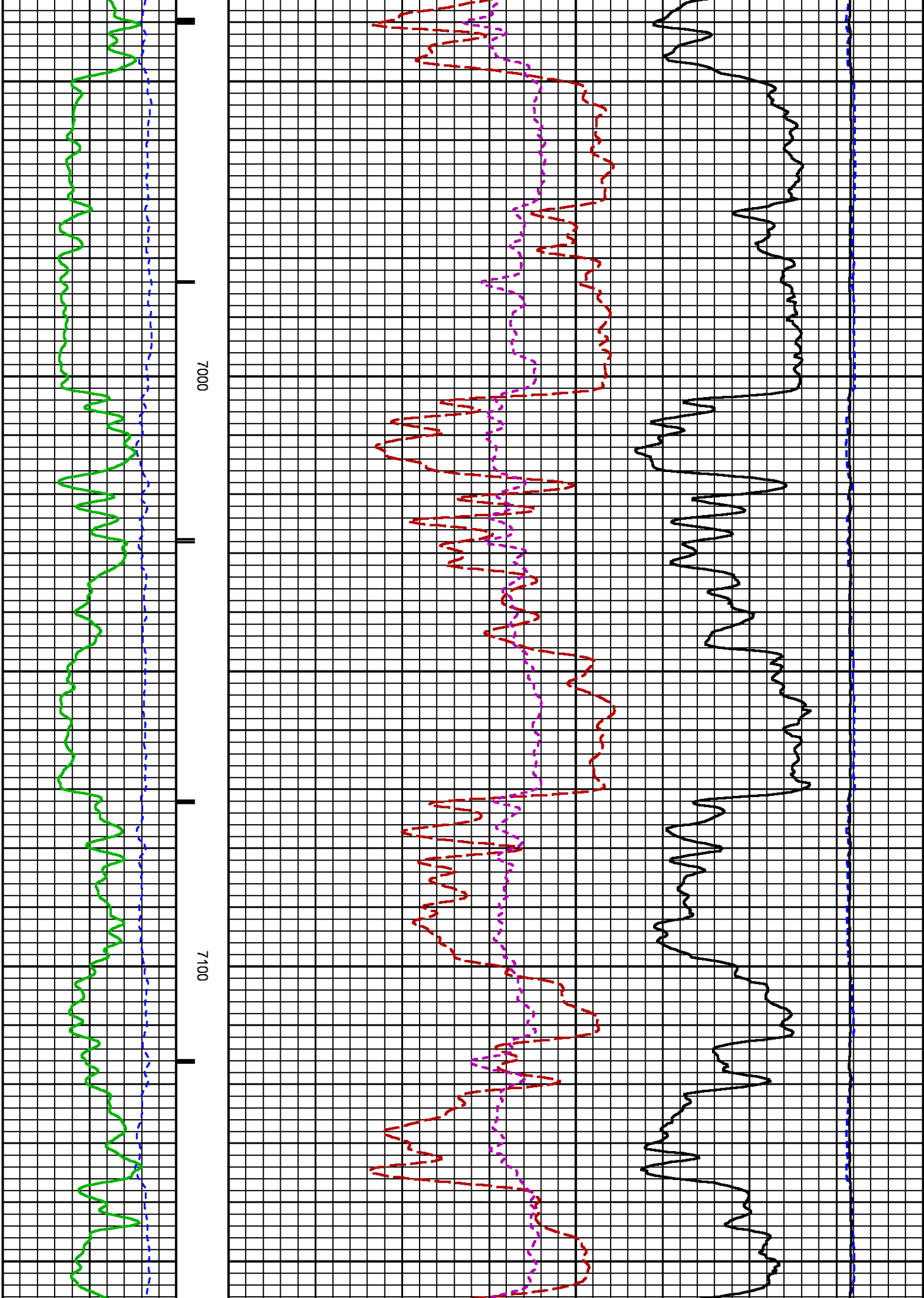


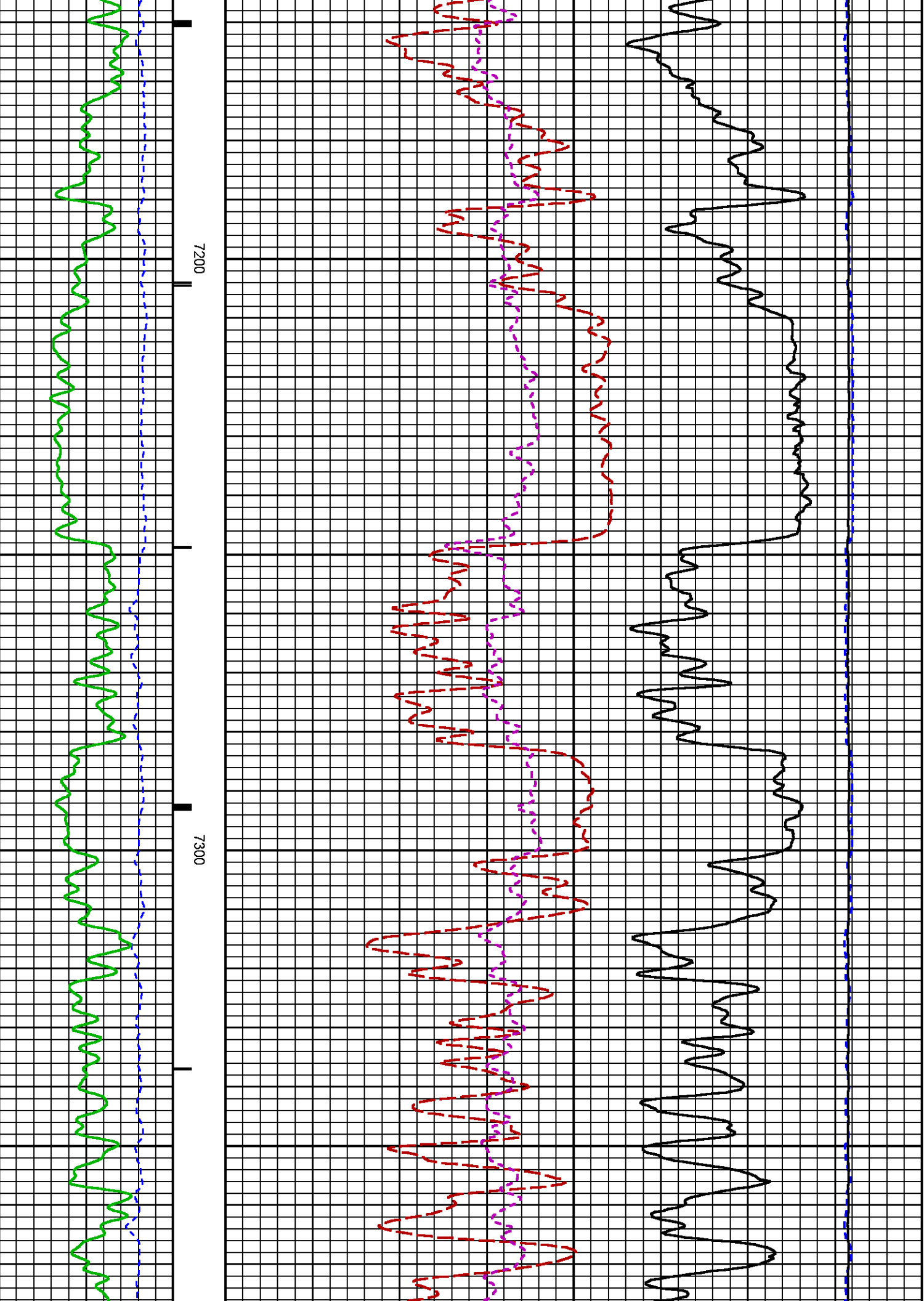


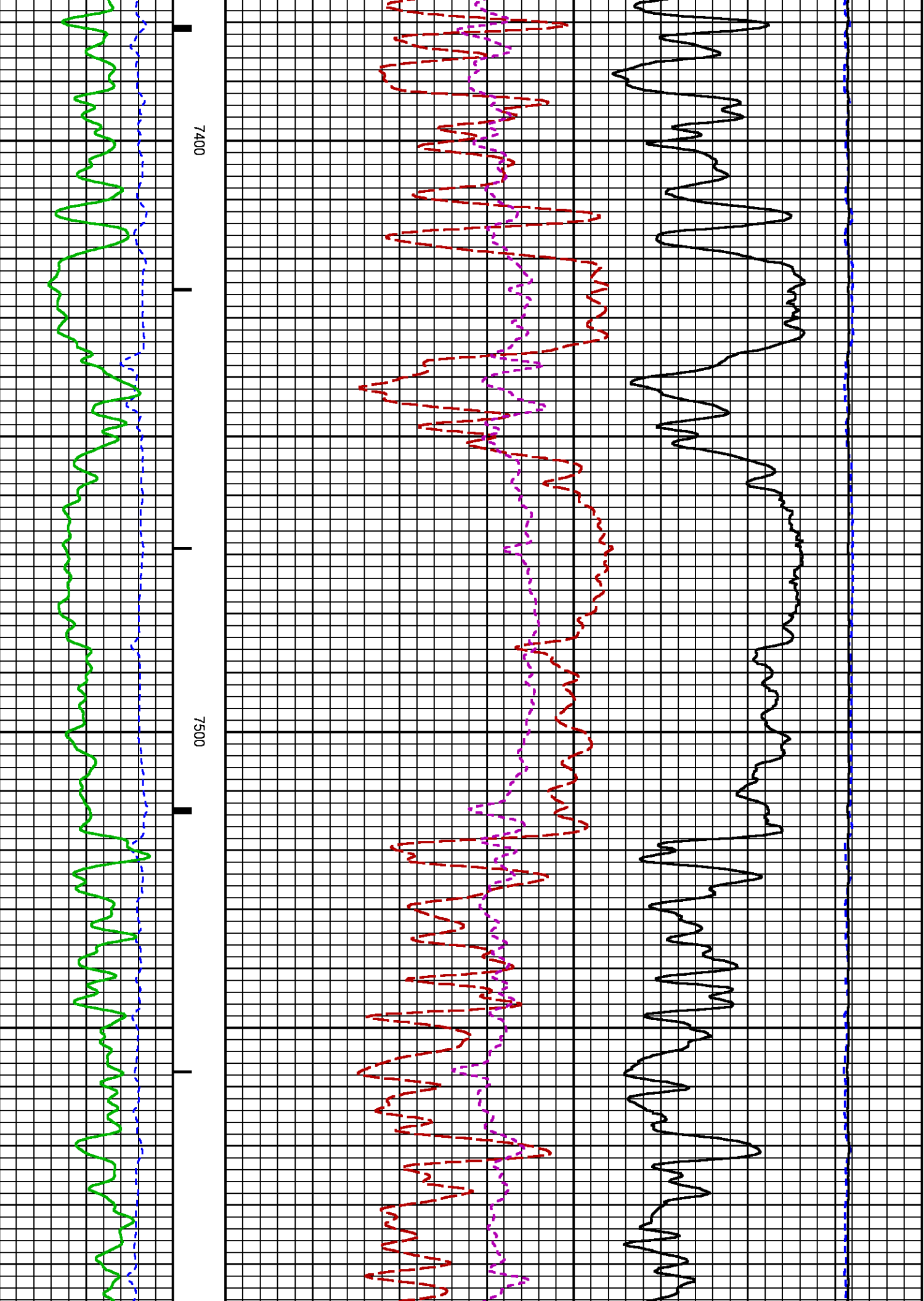


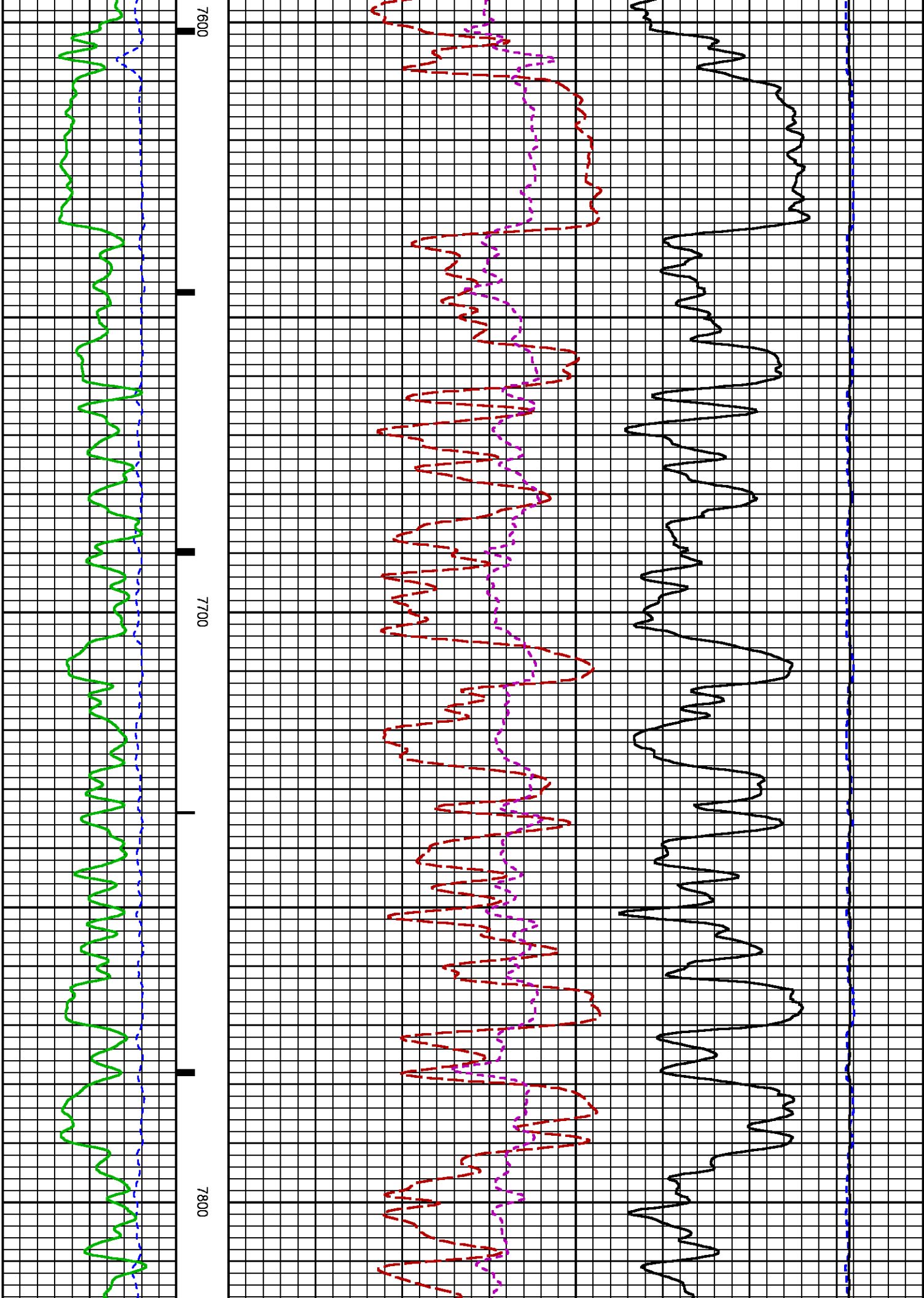


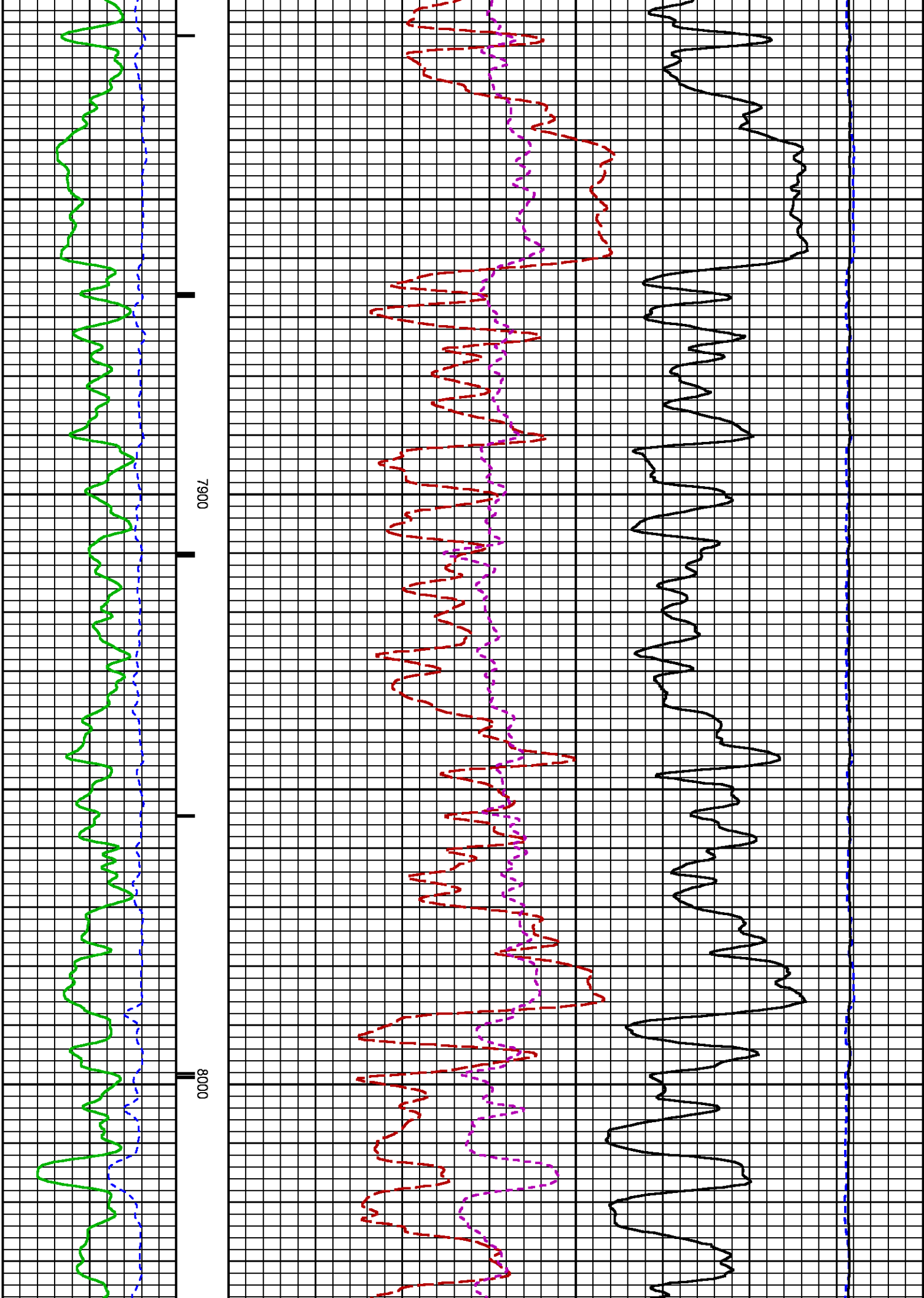


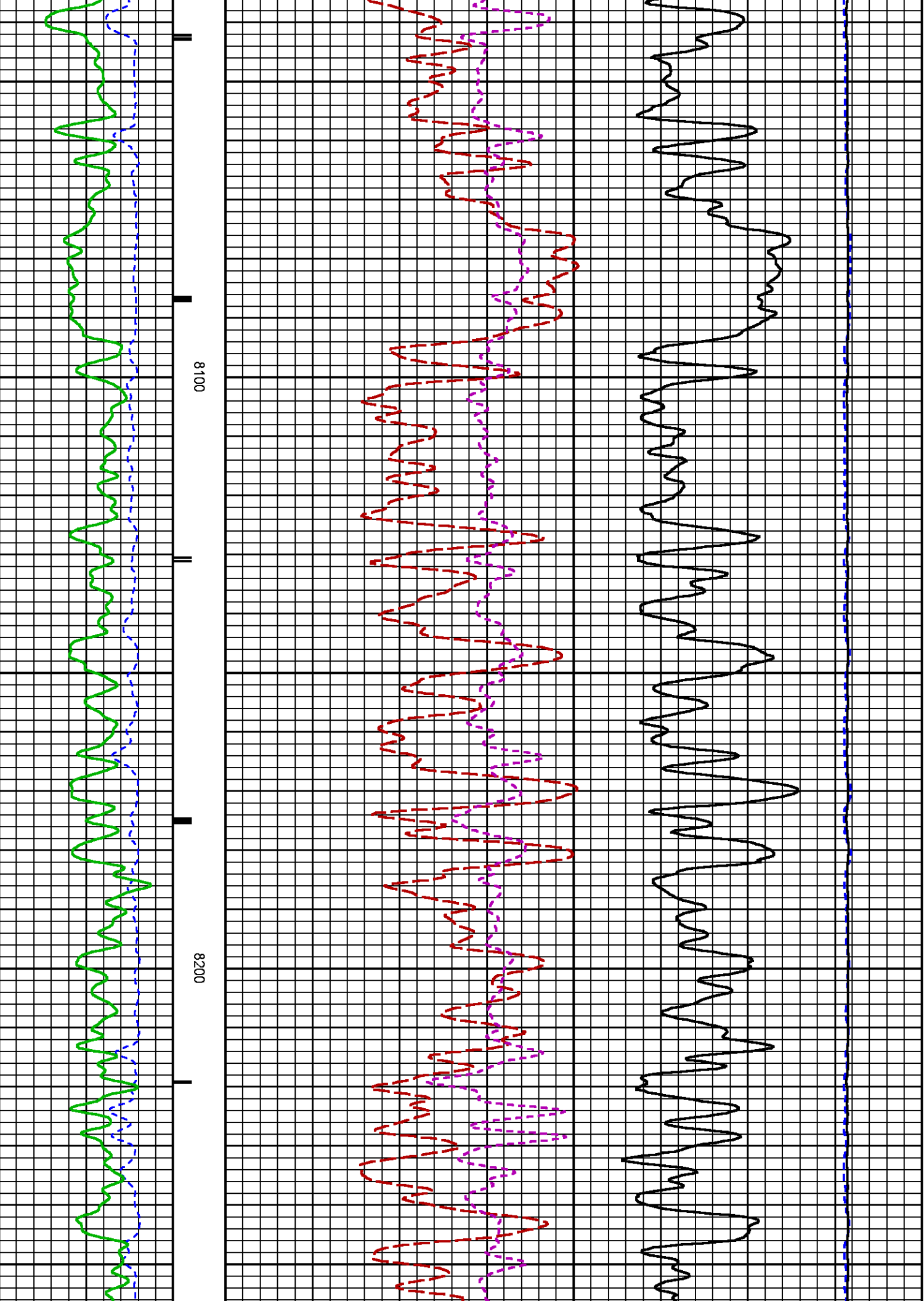


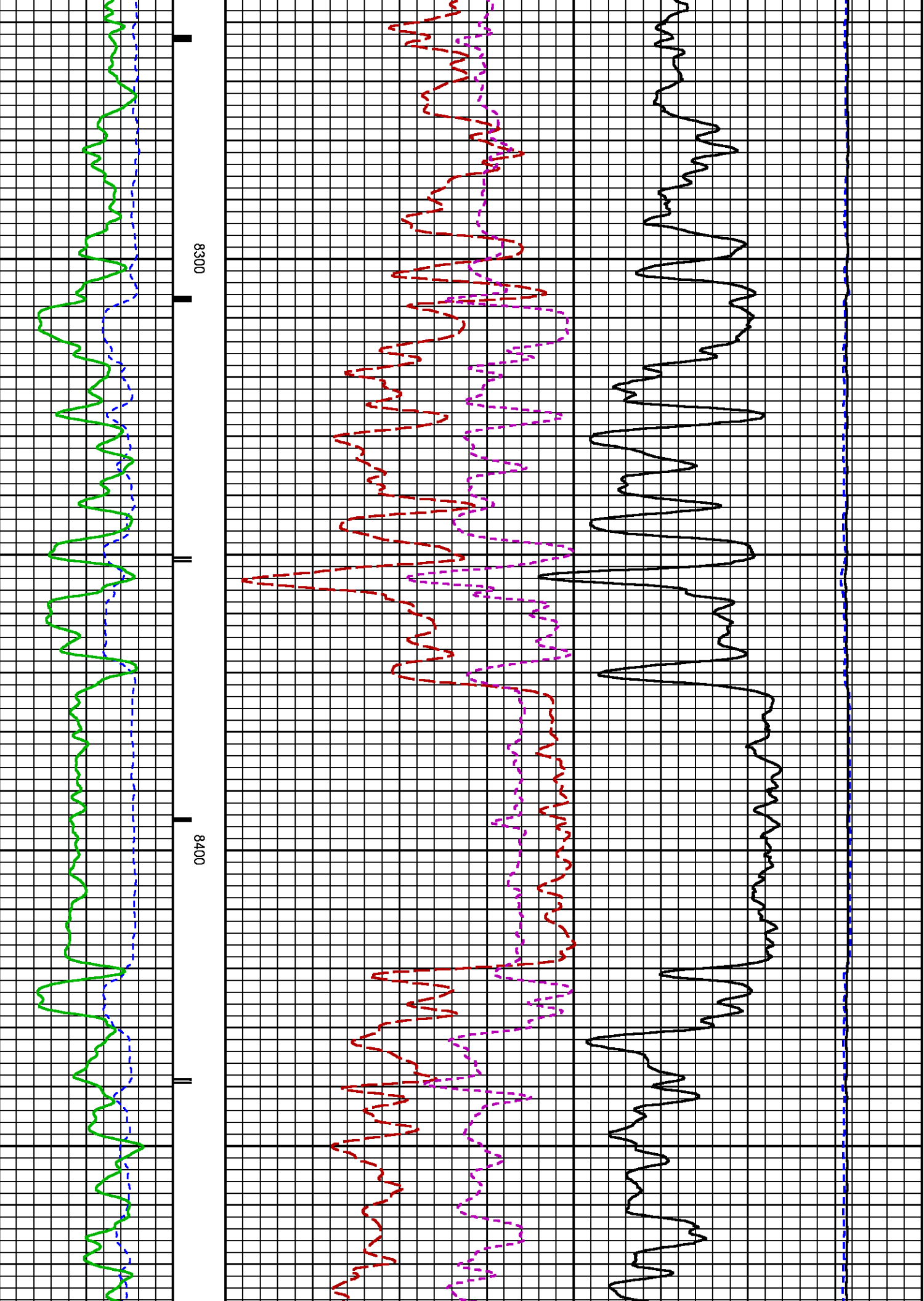


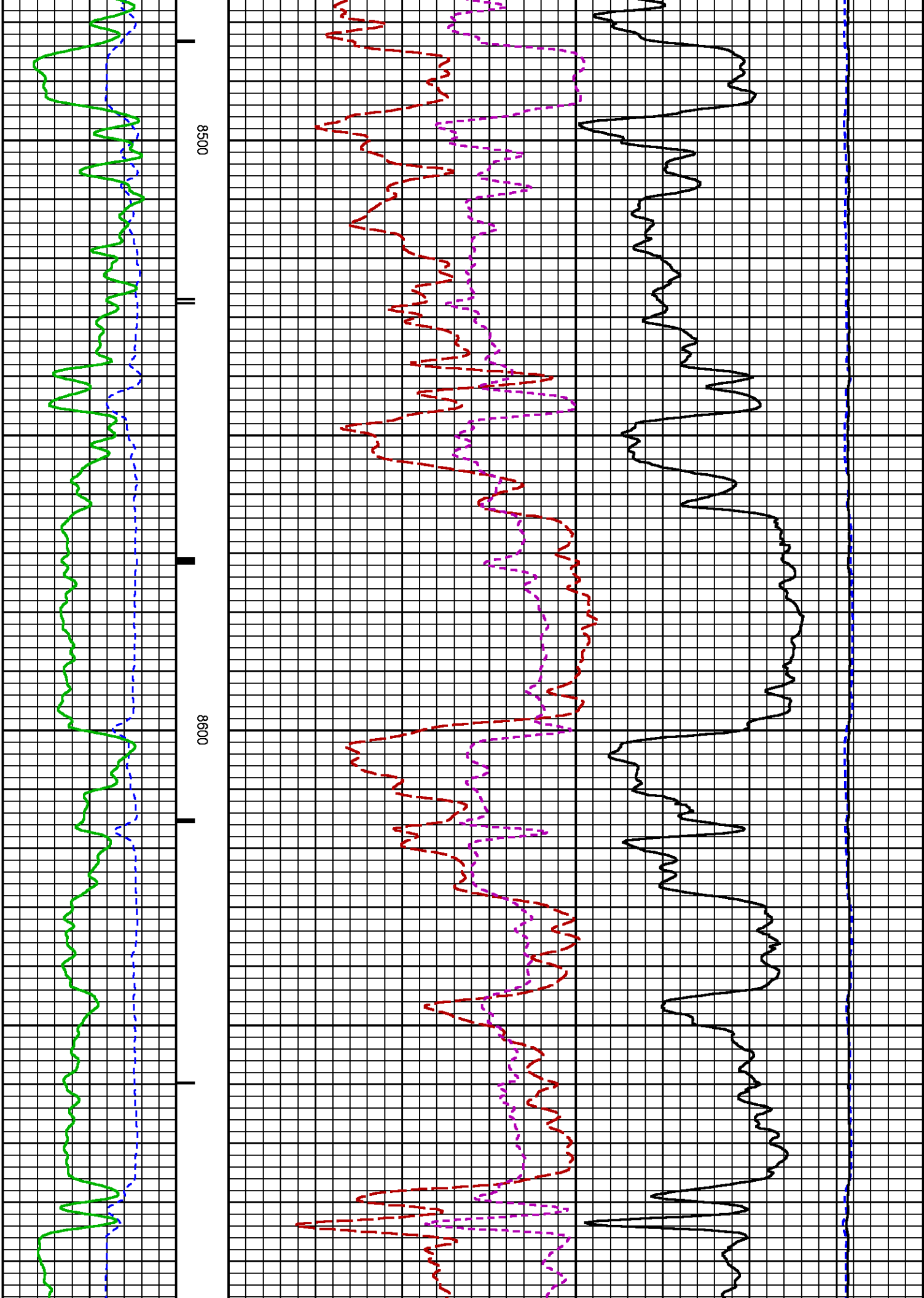


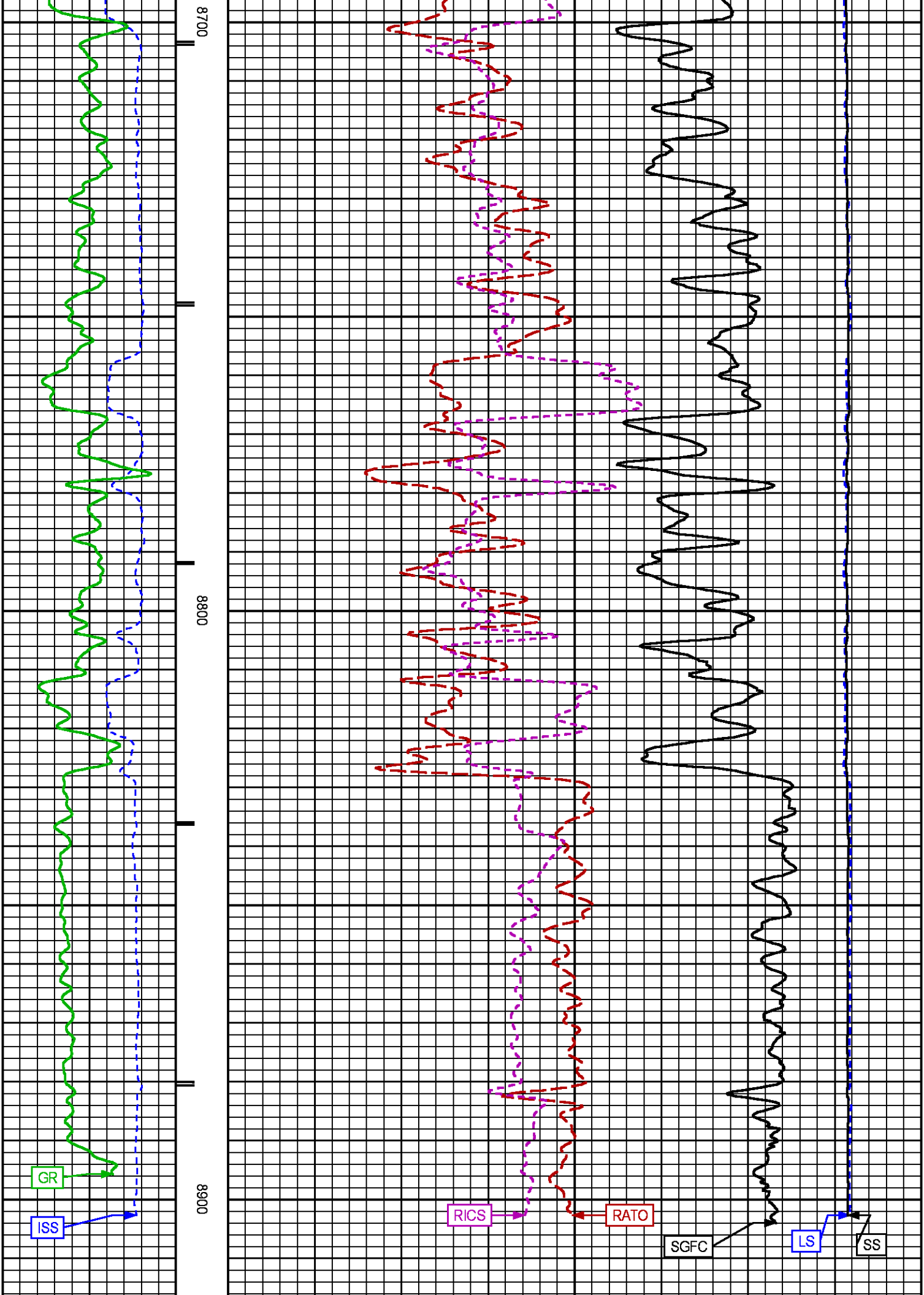


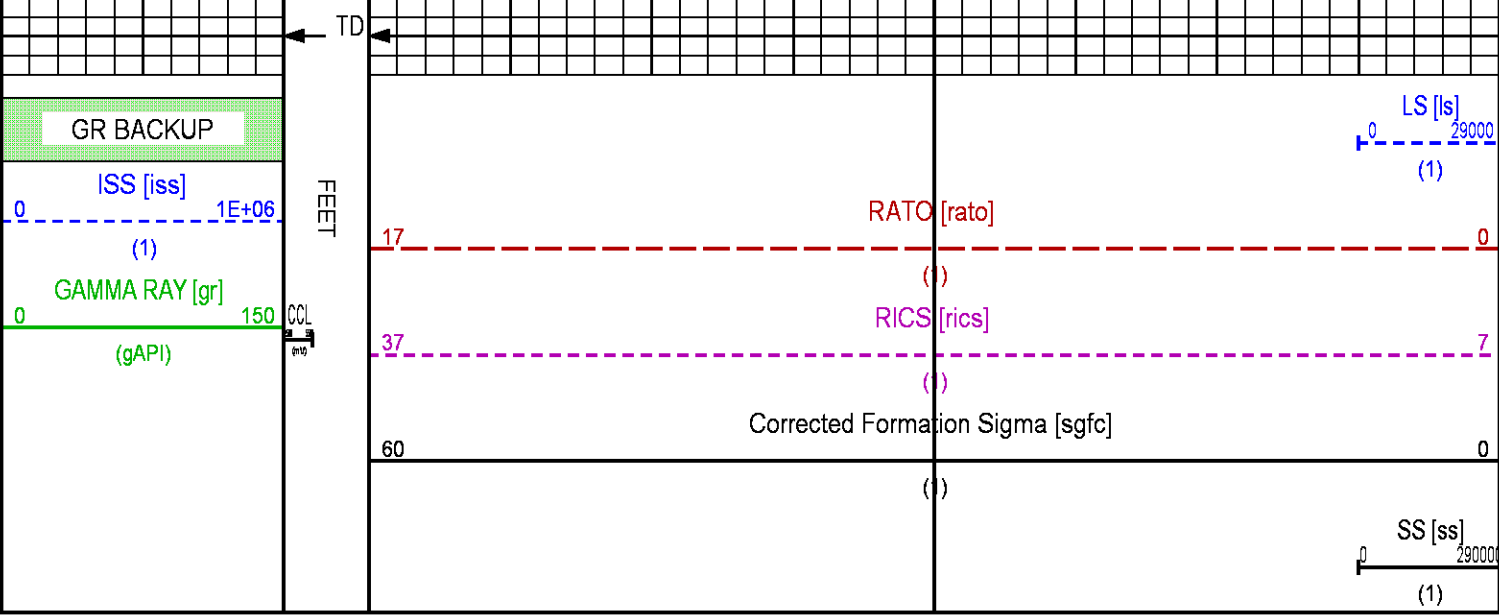












REPEAT LOG

ECLIPS 6.2i ECLIPS General Release Rel 6.2i Wed Jun 12 12:21:40 CDT 2013
Updates: 1

Plotted: Fri Jul 4 15:34:00 2014

PARAMETER AND FILTER SUMMARY REPORT					
FILE: /dat1a/CH087671/n353h01.prm					
LOGGING MODE: DEPTH DIRECTION: UP					
TOP DEPTH: 8048.125 ft BOTTOM DEPTH: 8424.648 ft					
SYMMETRIC FILTER					
MEASUREMENT TYPE	PARAMETER	VALUE	UNITS	INTERVAL (ft)	
GR	FILTER ()	medium (1)		TOP	BOTTOM
RPM PROCESSING					
MEASUREMENT TYPE	PARAMETER	VALUE	UNITS	INTERVAL (ft)	
PNC Parameters	BOREHOLE CONTENTS	FLUID		TOP	BOTTOM
	OPEN/CASED HOLE	CASED HOLE		"	"
	BOREHOLE SIZE	8.75	in	"	"
	CASING SIZE	4.50	in	"	"
	MATRIX	SANDSTONE		"	"
	CORRECTION BUFFER	11		"	"

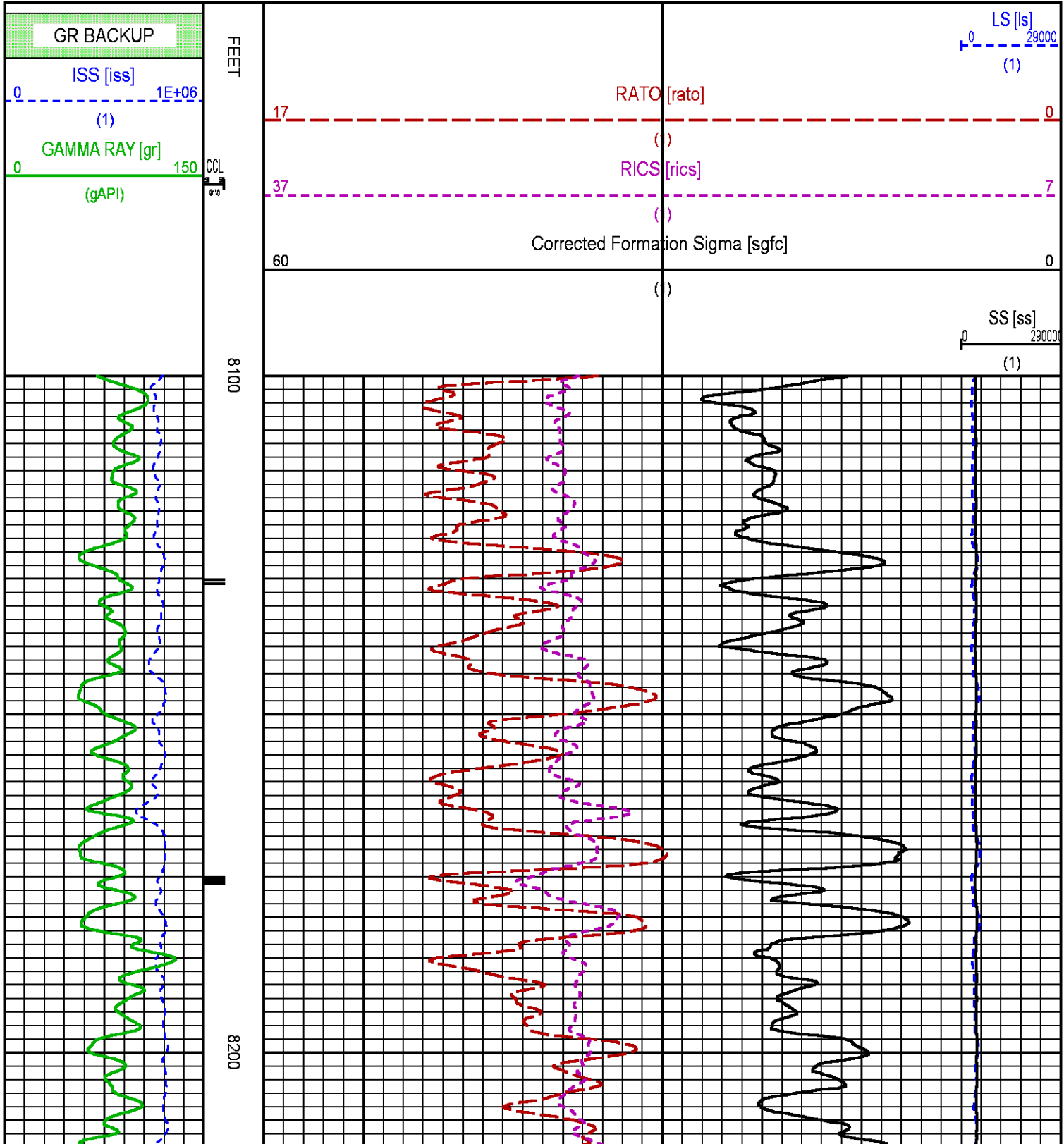
CURVE DESCRIPTION REPORT		
CURVE NAME	CREATION DATE	CURVE DESCRIPTION
F1:CCL	Jul 1 14:26:25 2014	CASING COLLAR LOCATOR
F1:GR	Jul 1 14:26:25 2014	GAMMA RAY
F1:ISS	Jul 1 14:26:25 2014	INELASTIC SHORT SPACE COUNT RATE
F1:LS	Jul 1 14:26:25 2014	LONG SPACE COUNT RATE
F1:RATO	Jul 1 14:26:25 2014	SHORT/LONG SPACE COUNT RATE RATIO
F1:RICS	Jul 1 14:26:25 2014	SHORT SPACE INELASTIC TO CAPTURE COUNT RATE RATIO (ISS/CSS)
F1:SGFC	Jul 1 14:26:25 2014	CORRECTED FORMATION SIGMA
F1:SS	Jul 1 14:26:25 2014	SHORT SPACE COUNT RATE

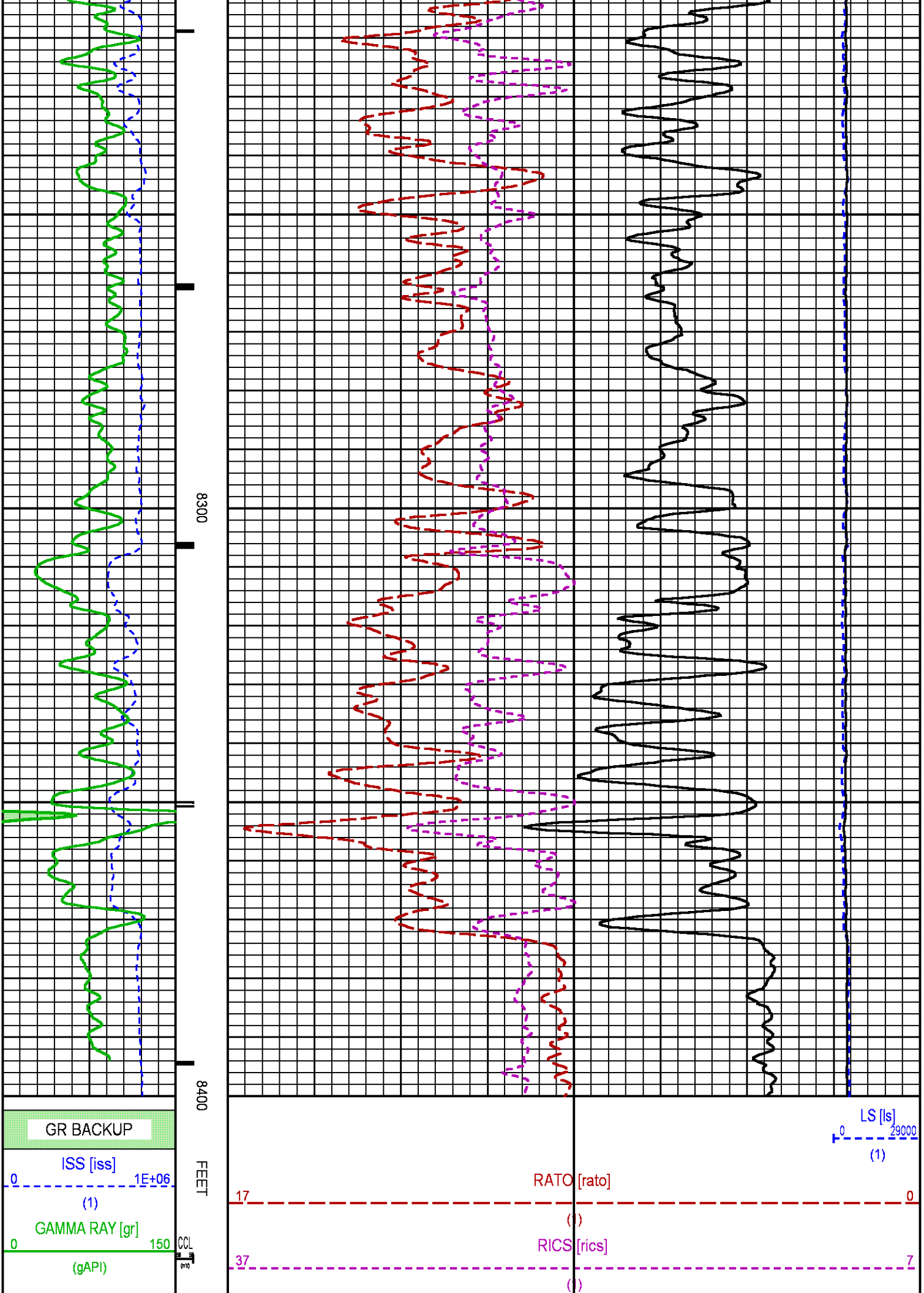
CURVE MEASURE POINT OFFSET

CURVE	OFFSET (ft)	CURVE	OFFSET (ft)	CURVE	OFFSET (ft)	CURVE	OFFSET (ft)
CCL	26.00	ISS	12.75	RATO	12.75	SGFC	12.75
GR	23.00	LS	12.75	RICS	12.75	SS	12.75

Presentation : HL6670:WPX_rpm_pnc3D_FINAL_.fvpdf [5"/100' Scale]
 Plot Interval : 8100 - 8400 Feet

Data File 1 : F1 : HL6670:/dat1a/CH087671/n353h01.xtf
 Created On : Jul 1 14:26:25 2014
 Company : WPX ENERGY
 Well : SAVAGE RWF 443-25
 Field : RULISON
 File Interval : 21.5 - 8913 Feet
 OCT : n353h





		60	Corrected Formation Sigma [sgfc]	0
			(1)	
				SS [ss]
				0 29000
				(1)

CALIBRATION / VERIFICATION SUMMARY

Source File: /dat1a/CH087671/n354h.tp1

GR PRIMARY CALIBRATION SUMMARY

TOOL #: 2812LA 11701636 DATE/TIME PERFORMED: Sat Jun 7 13:49:20 2014

UNIT #: 3880TA HL6670 CALB JIG #: 4702NK DA-041

	BACKGROUND (cts/s)	CALBRTR ON (cts/s)	CR DIFF (cts/s)	MULT	BACKGROUND (gAPI)	CALBRTR ON (gAPI)	CALBRTR (gAPI)
GR	64.73	269.38	204.6	1.026	66.43	276.43	210

GR PRIMARY VERIFICATION SUMMARY

TOOL #: 2812LA 11701636 DATE/TIME PERFORMED: Sat Jun 7 13:51:47 2014

UNIT #: 3880TA HL6670 VERI JIG #: 4702NK DA-041

	BACKGROUND (cts/s)	CALBRTR ON (cts/s)	MULT	BACKGROUND (gAPI)	CALBRTR ON (gAPI)	DIFF. (gAPI)
GR	62.22	269.36	1.026	63.85	276.40	212.55
						200.00 220.00

GR BEFORE LOG VERIFICATION SUMMARY

NOT DONE

GR AFTER LOG VERIFICATION SUMMARY

NOT DONE

RPM_PNC_3D PRIMARY CALIBRATION SUMMARY

TOOL: 8283PA 10585555 DATE/TIME PERFORMED: Sun Jun 8 11:45:12 2014

UNIT: 3880TA HL6670 CALIBRATOR: 2437XB 112674 SOURCE: 8281AA 11765054 HOURS: 8281AA 464

	ISS	Mtr Vlt (V)	SS Gain	LS Gain	XLS Gain	EA Temp (degF)	Sync Delay (usec)	RCAL
Raw Data	802244	121	2328	2286	2402	97	7	0.9782
Interpolated	1300000	141	2306	2284	2397			

	ISS	BKS	BKL	BKX	SGA1	SDA1	SGA2	SDA2
Raw Data	802244	6514	1037	163	25.93	0.15	24.13	0.33
					25.35 26.40	0.00 0.20	23.60 24.80	0.00 0.40

	ISS	ILS	IXS	SS	SS2	LS	CSS	CLS
Raw Data	802244	163358	27238	86314	30781	8033	52302	12825
Fit Quality %		0.990	0.805	0.872	0.898	0.915	0.852	0.962

	ISS	RBOR	RIN ISS/LS	RIN13 ISS/XS	RICS ISS/CSS	RATO SS/LS	RTWO SS2/LS	RONE CSS/CLS
Raw Data	802244	1.44	4.91	29.47	15.34	10.75	3.83	4.08
	1.42	1.45	3.55	5.52	22.20	32.70	10.99	16.34
Fit Quality %	0.031	0.178	0.221	0.110	0.014	0.013	0.056	
Reduced	1405263	1.44	4.90	29.39	15.32	10.75	3.83	4.08
	1.42	1.45	4.33	5.52	27.60	32.70	13.70	16.34
	10.06	11.10	3.57	3.95	3.76	4.22		

TPSETEMP PRIMARY CALIBRATION SUMMARY

TOOL #: 8255XA 11774568

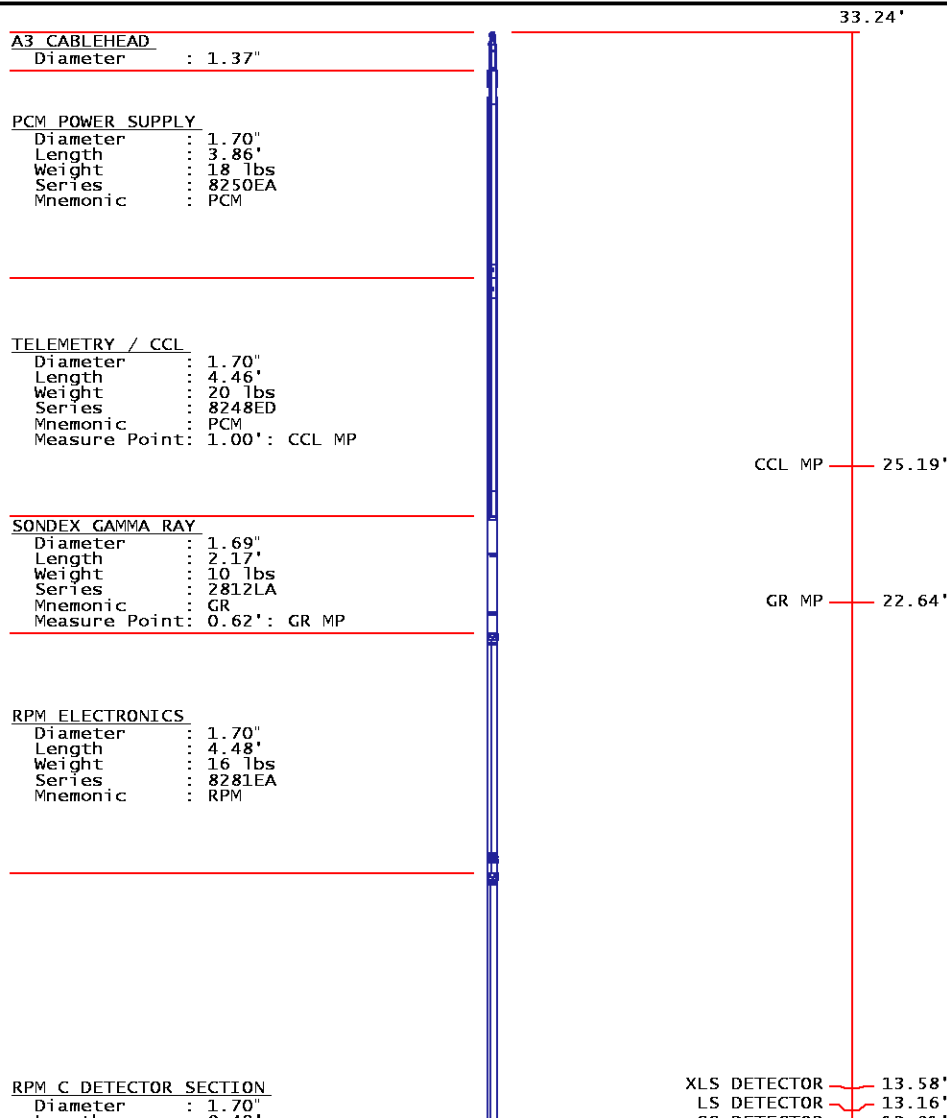
DATE/TIME PERFORMED: Wed May 14 12:39:45 2014

UNIT #: 3880TA HL6670

	T(0)	T(1)	T(2)	T(3)
Corr Coeff for Temp	-9.274653E+00	1.055639E-01	2.143764E-06	-2.782846E-10

INSTRUMENT CONFIGURATION

Source File: /dat1a/CH087671/n354h~~TEMP-ldg



Length : 9.40'
Weight : 41 lbs
Series : 8283PA
Mnemonic : RPM
Measure Point: 5.45': XLS DETECTOR
Measure Point: 5.04': LS DETECTOR
Measure Point: 4.79': SS DETECTOR

SS DETECTOR 12.91'

RPM_SOURCE_SECTION

Diameter : 1.70"
Length : 4.70'
Weight : 18 lbs
Series : 8281FA
Mnemonic : RPM

TEMPERATURE / PRESSURE

Diameter : 1.70"
Length : 3.30'
Weight : 13 lbs
Series : 8255XA
Mnemonic : SRPL
Measure Point: 1.52': TEMP MP

TEMP MP 1.65'
PRES MP

BULL PLUG 1 11/16

0.00'

TOTAL LENGTH: 33.24'
TOTAL WEIGHT: 140 lbs
MAX DIAMETER: 0'1.70"



COMPANY	WPX ENERGY
WELL	SAVAGE RWF 443-25
FIELD	RULISON
COUNTY	GARFIELD
STATE	CO

FILE NO:	US087671
API NO:	05045220010000

LOCATION:
SHL: 1185' FSL 1382' FEL
BHL: 2122' FSL 606' FEL
SEC 25 TWP 6S RGE 94W

ELEVATIONS:
KB 6260 FT
DF
GL 6234 FT

S25 T6S R94W
PAD: RWF 43-25
NABORS 577

DATE	01-Jul-2014
------	-------------