



NABORS

**COMPLETION
& PRODUCTION
SERVICES CO.**

Gamma Ray,
Cement Bond,
Variable Density,
CCL

Company		Noble Energy	
Well		Cobb 06-23	
Field		Wattenberg	
County		Weld	
State		Co	
Location:		API # : 0512315898	
Permanent Datum		SEC 6 TWP 4N RGE 64W	
Log Measured From		Ground Level Elevation 4848	
Drilling Measured From		K.B. 858 D.F. G.L. 4848	
Date		8/18/14	
Run Number		one	
Depth Driller		7270	
Depth Logger		6707	
Bottom Logged Interval		6706	
Top Log Interval		surface	
Open Hole Size		water	
Type Fluid			
Density / Viscosity			
Max. Recorded Temp.			
Estimated Cement Top			
Time Well Ready			
Time Logger on Bottom			
Equipment Number		703 tit. 2 3/4	
Location			
Recorded By		Chuck Briggs	
Witnessed By		Mr. Allen Miller	
Run Number		Borehole Record	
Bit		From To	
Size		Weight From To	
Casing Record		Size Wgt/Ft Top Bottom	
Surface String		8 5/8 24# surface 463	
Prot. String			
Production String		4 1/2 11.6 surface 7246	
Liner			

<<< Fold Here >>>

All interpretations are opinions based on inferences from electrical or other measurements and we cannot and do not guarantee the accuracy or correctness of any interpretation, and we shall not, except in the case of gross or willful negligence on our part, be liable or responsible for any loss, costs, damages, or expenses incurred or sustained by anyone resulting from any interpretation made by any of our officers, agents or employees. These interpretations are also subject to our general terms and conditions set out in our current Price Schedule.

Comments

LOG NOT CORRECTED TO OPEN HOLE!!!!!!!!!!

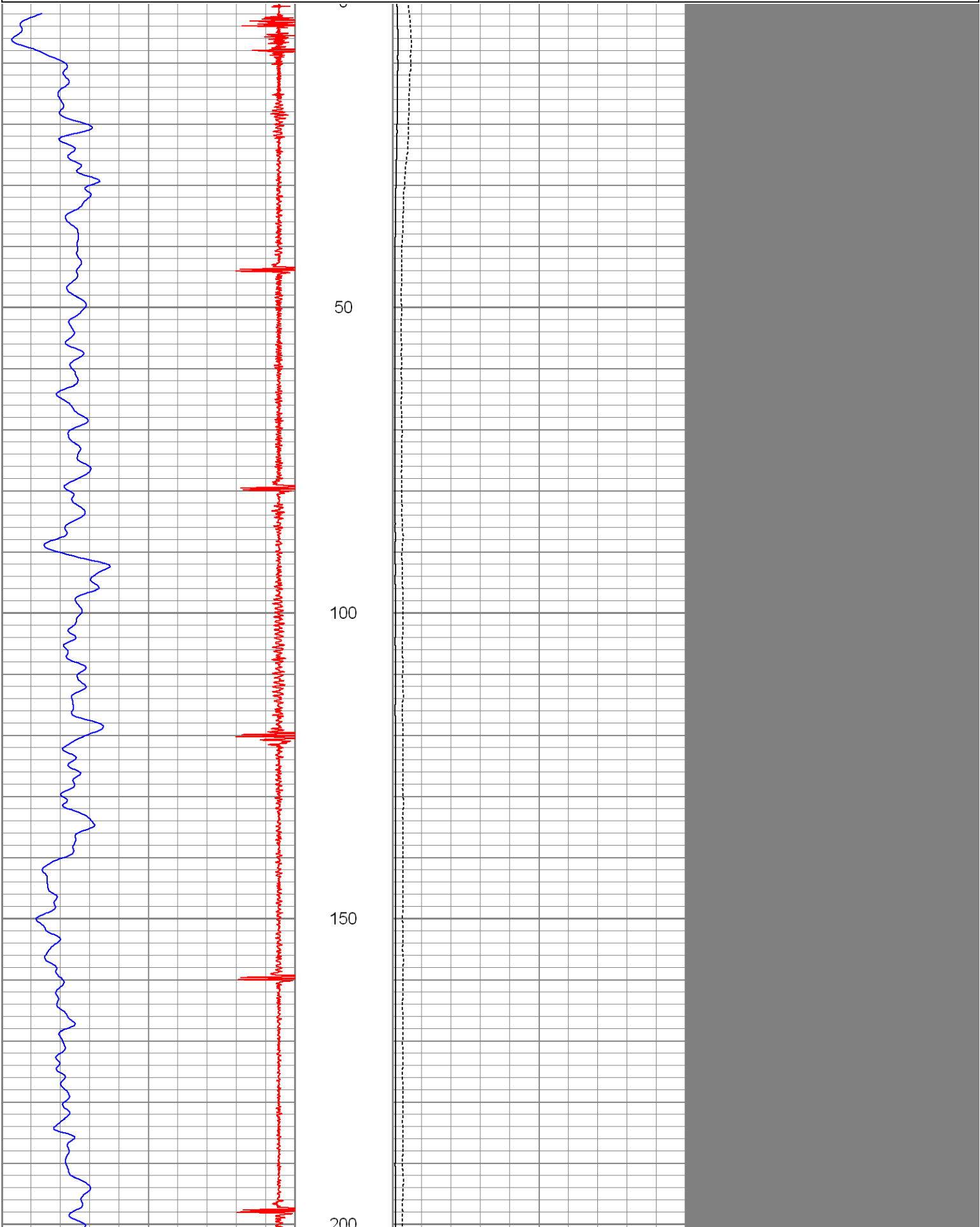
0	Gamma Ray (GAPI)	200
9	CCL	-0.5
240	TT3FT (usec)	340

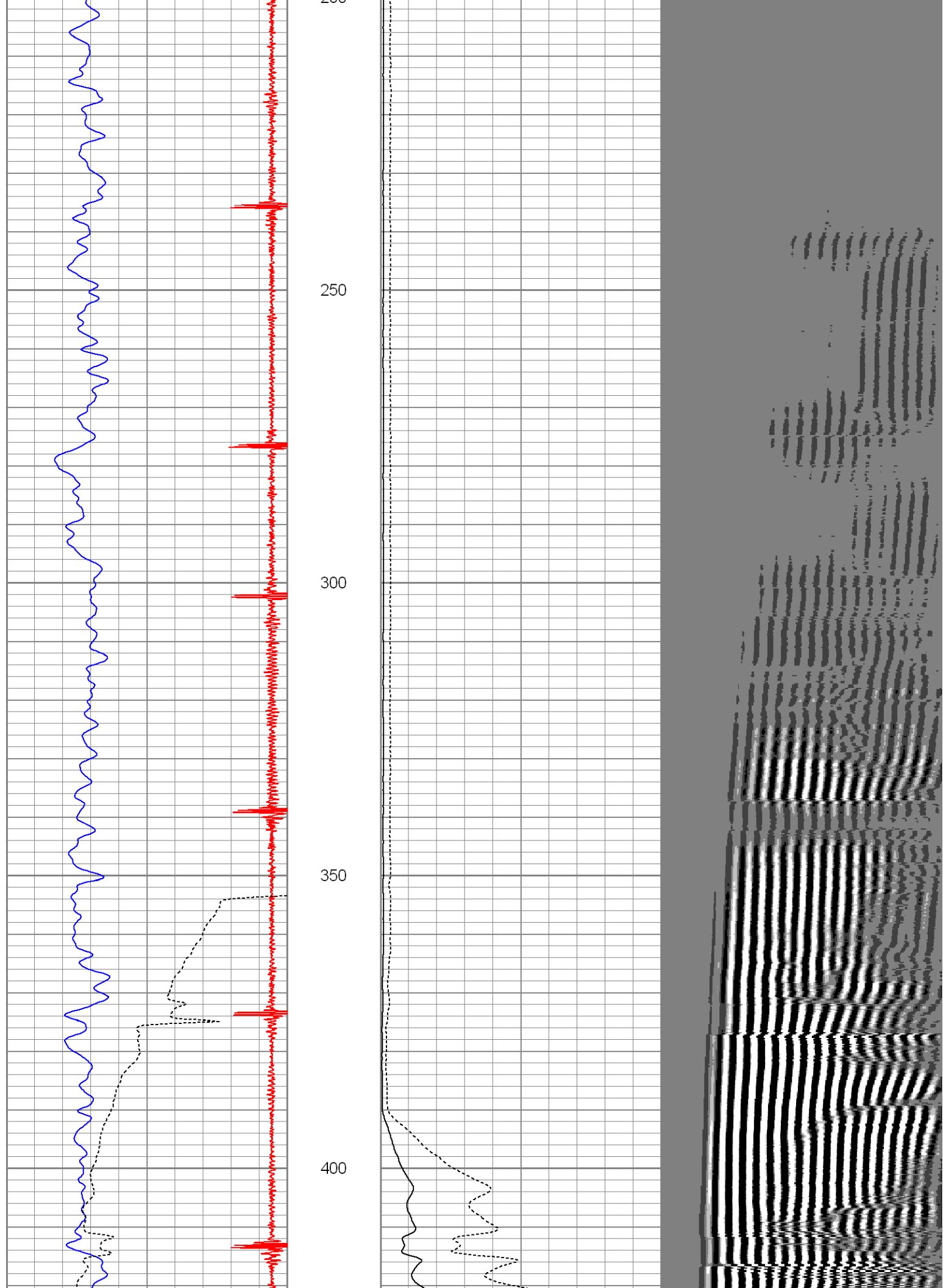
0	Amplified Amplitude (mV)	30
0	Amplitude (mV)	100

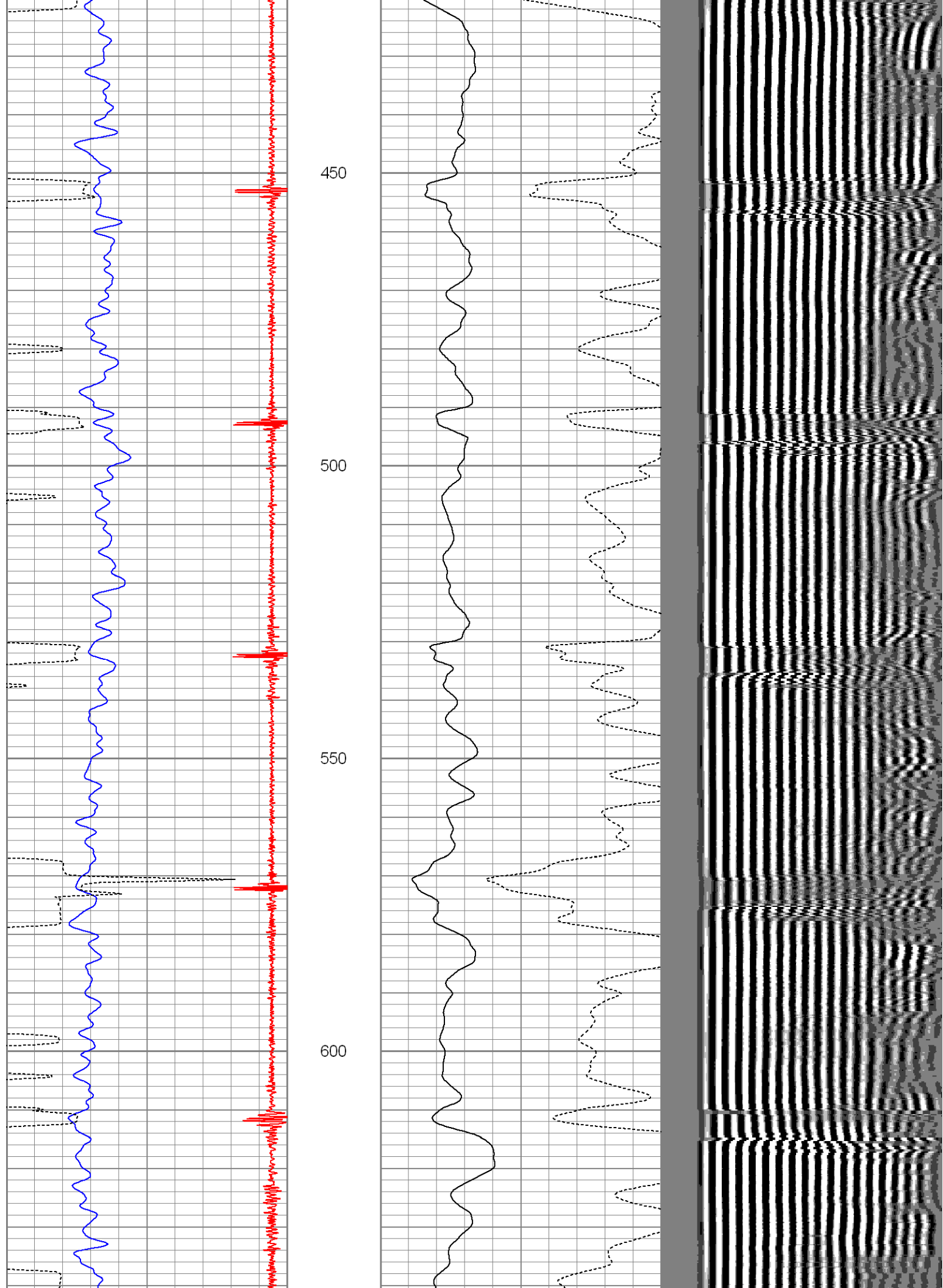
200

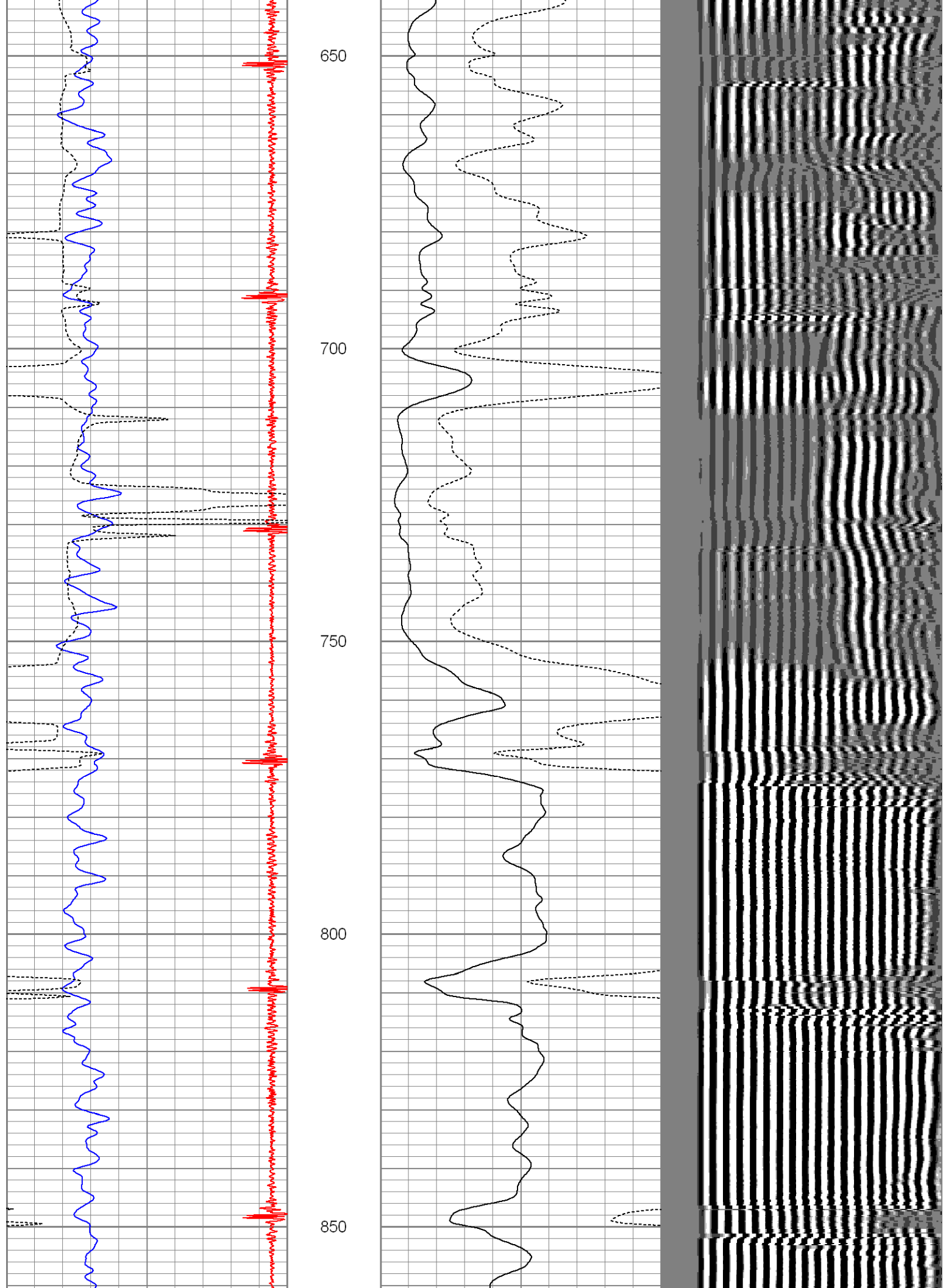
VDL

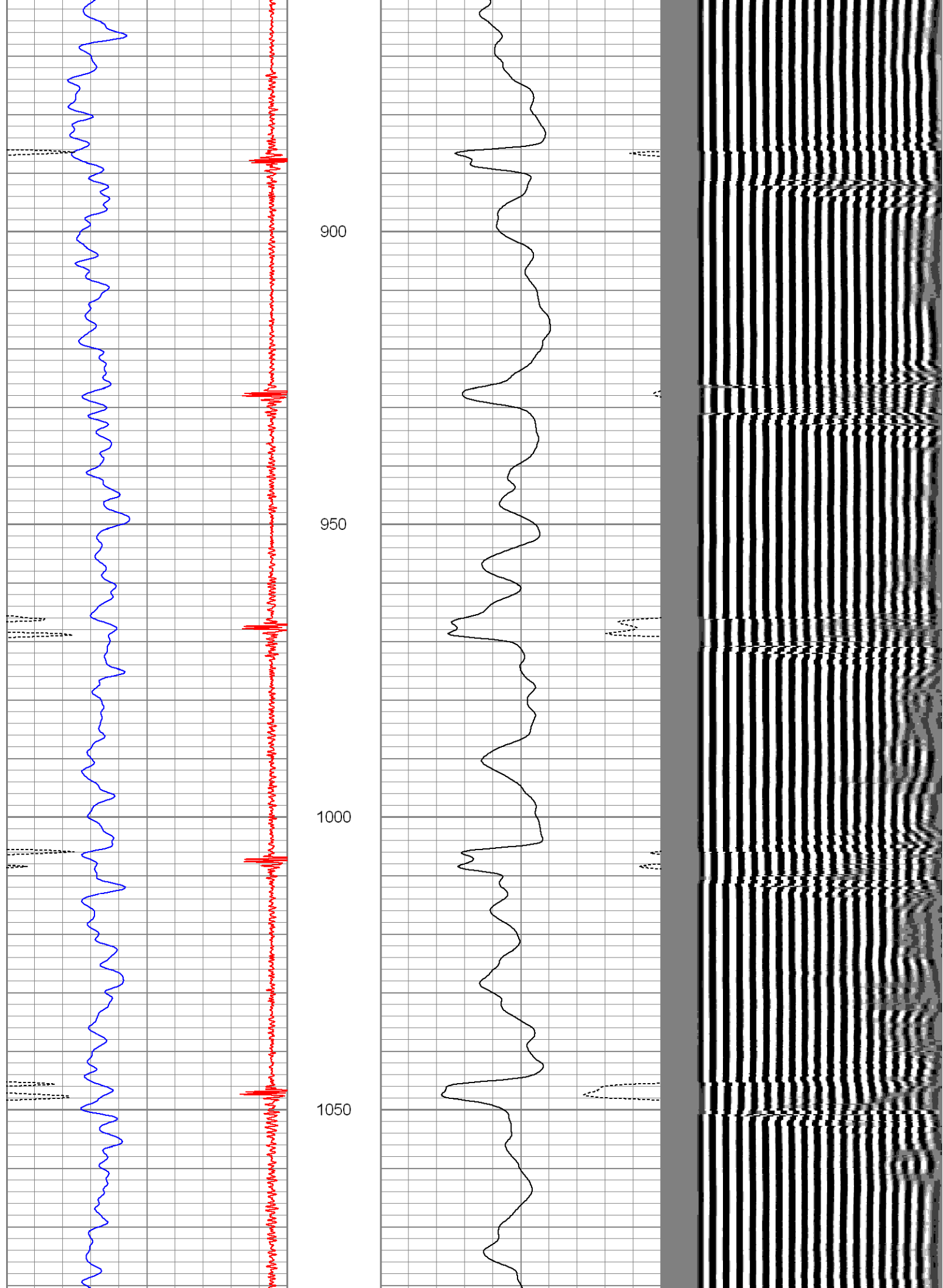
1200

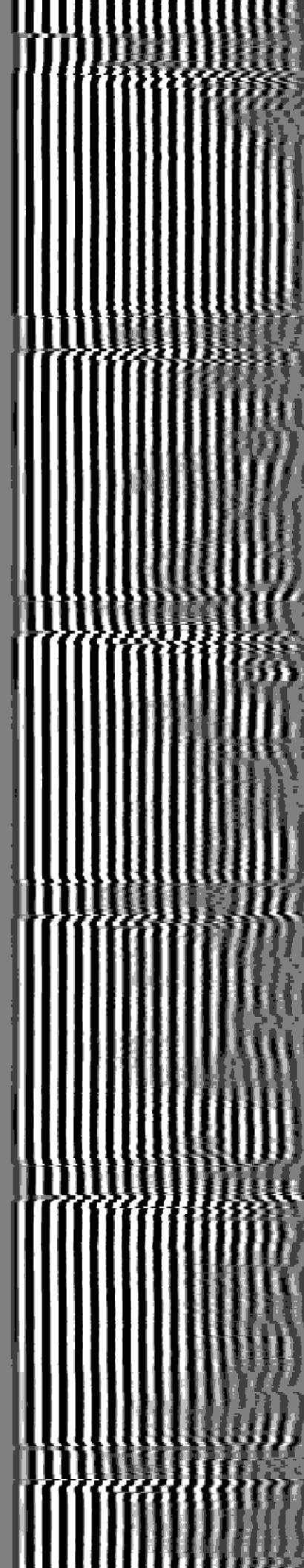
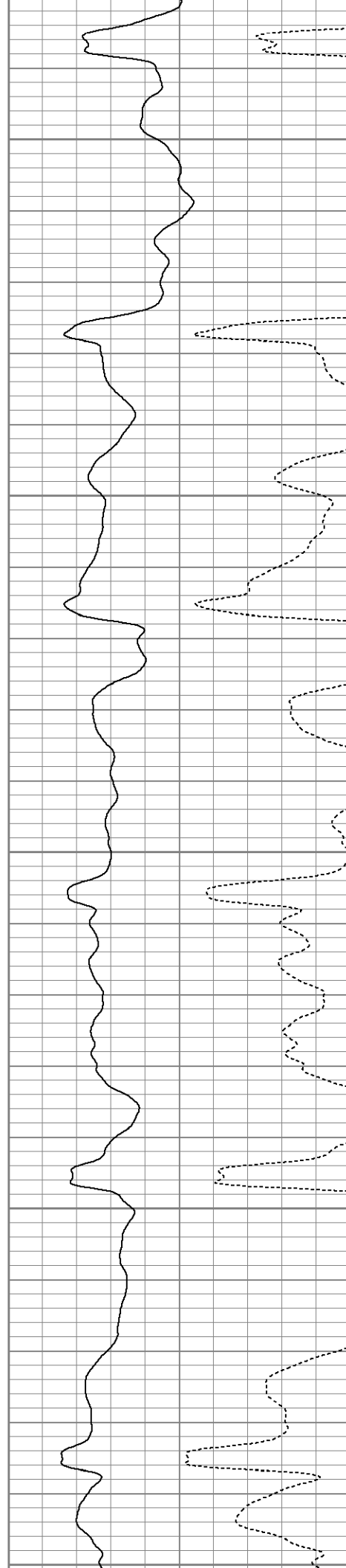
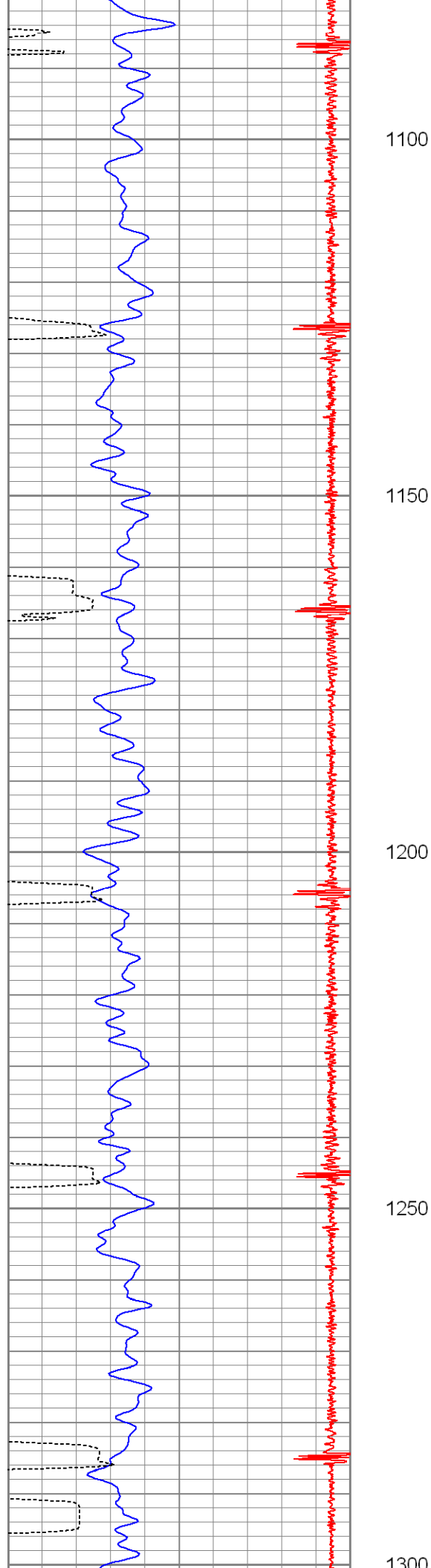


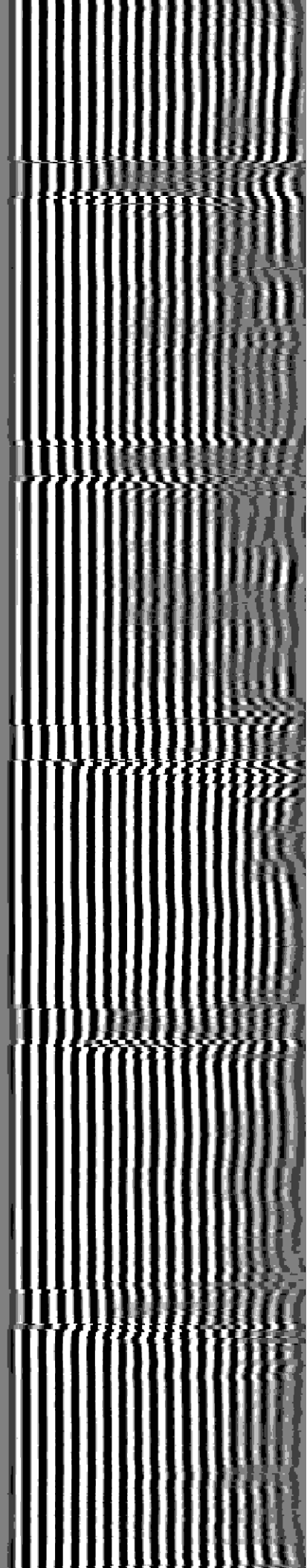
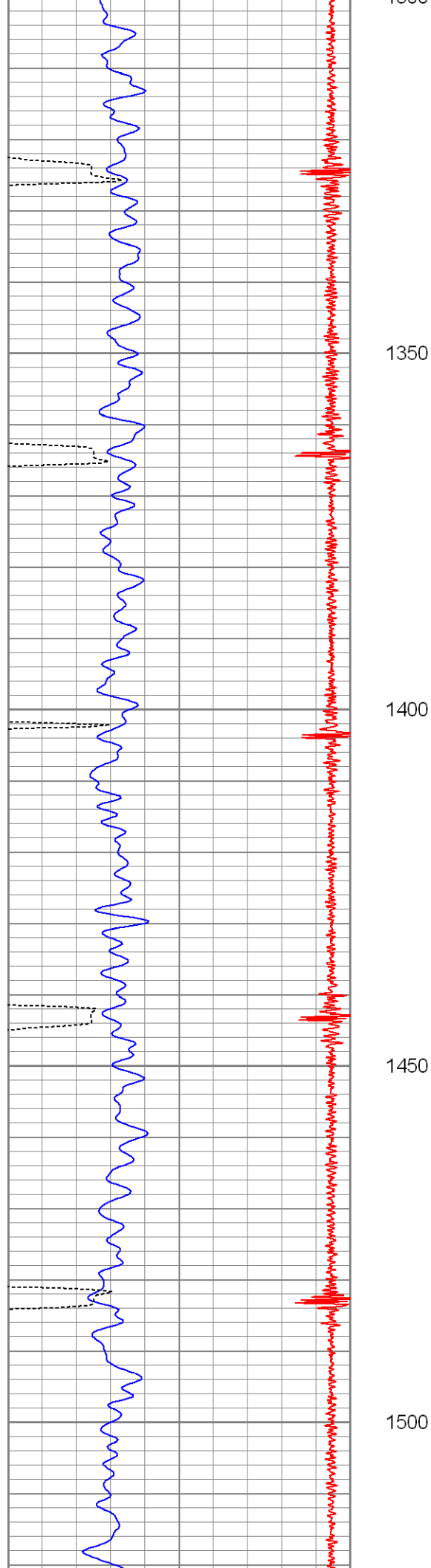


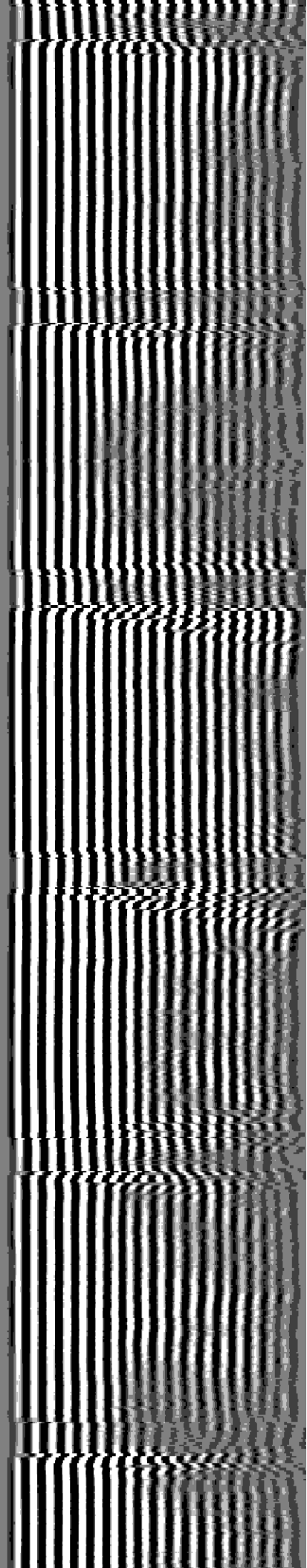
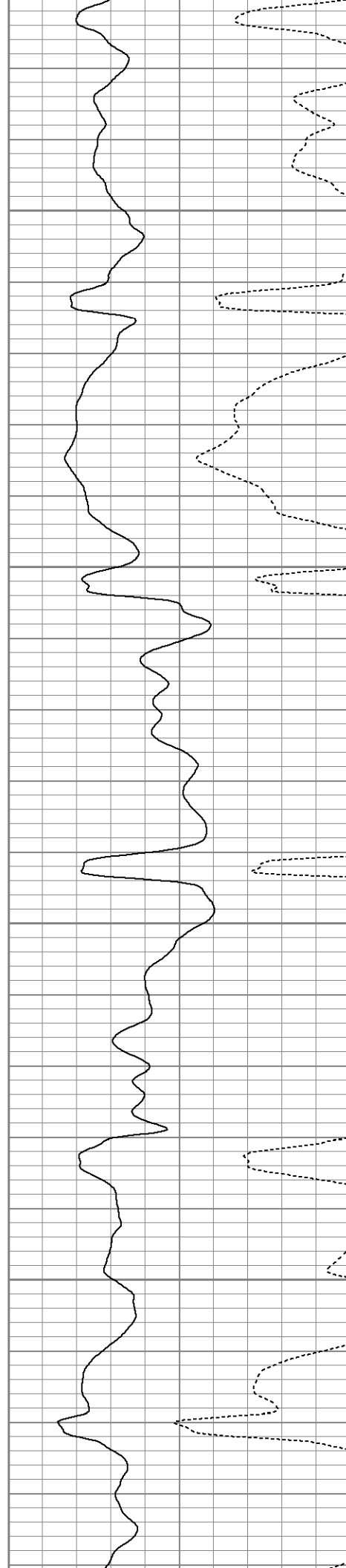
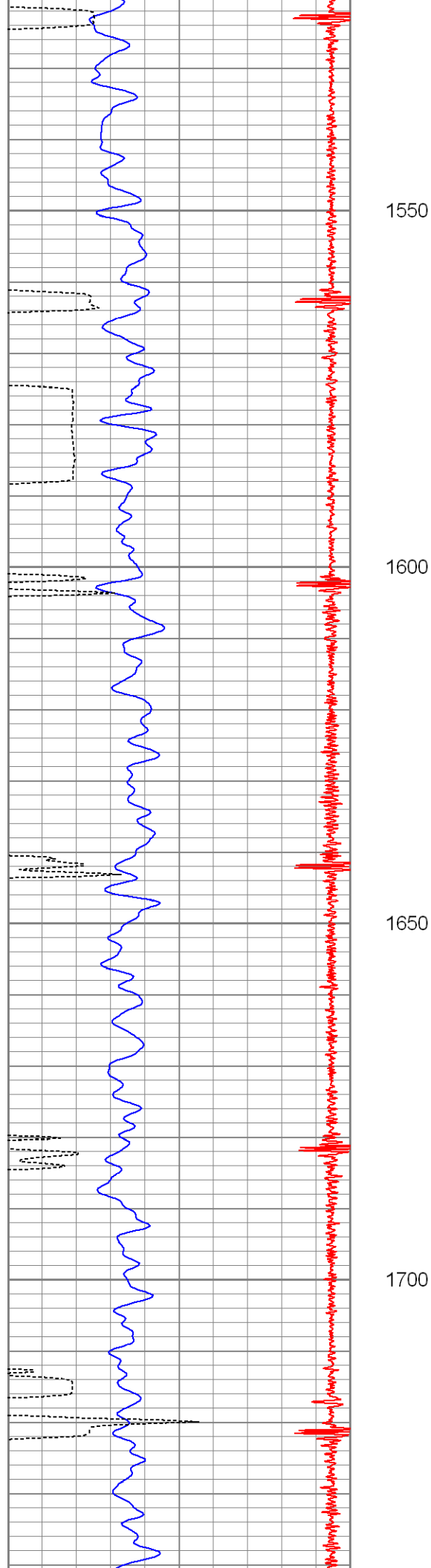


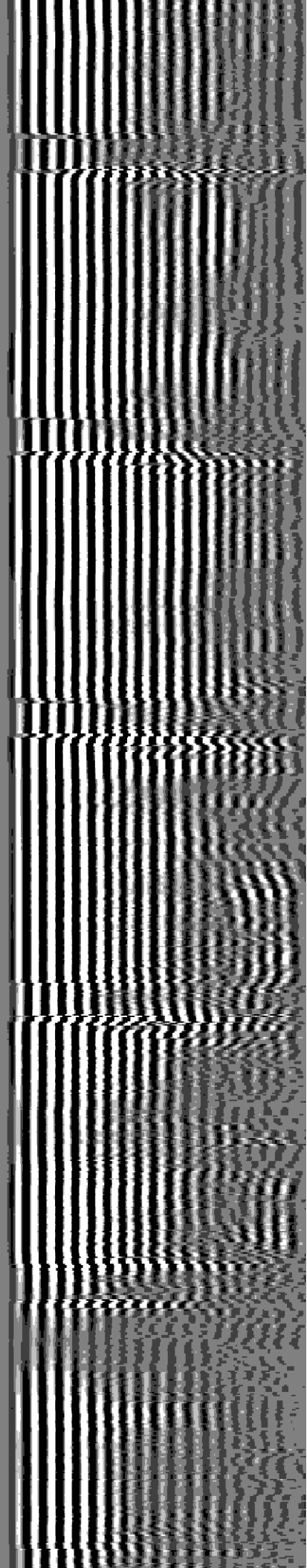
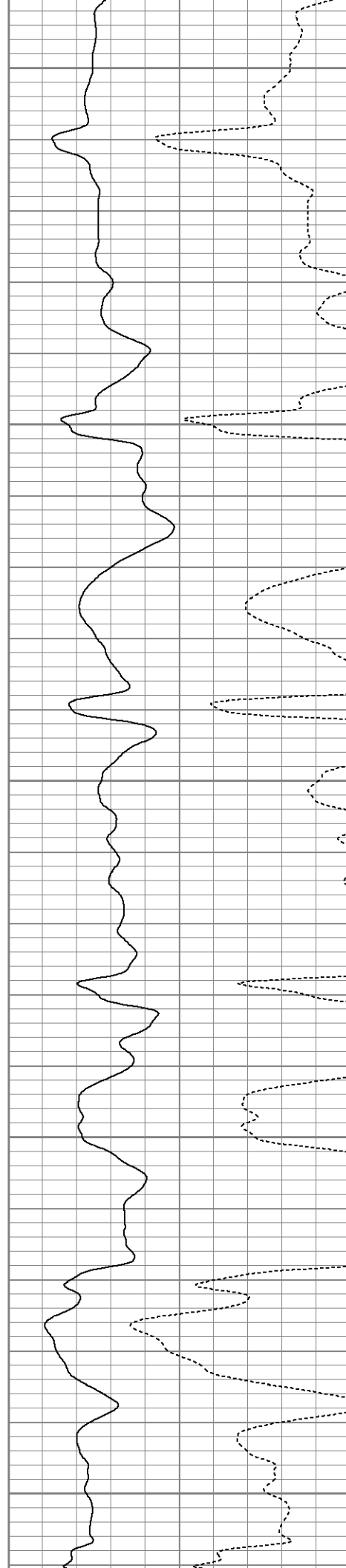
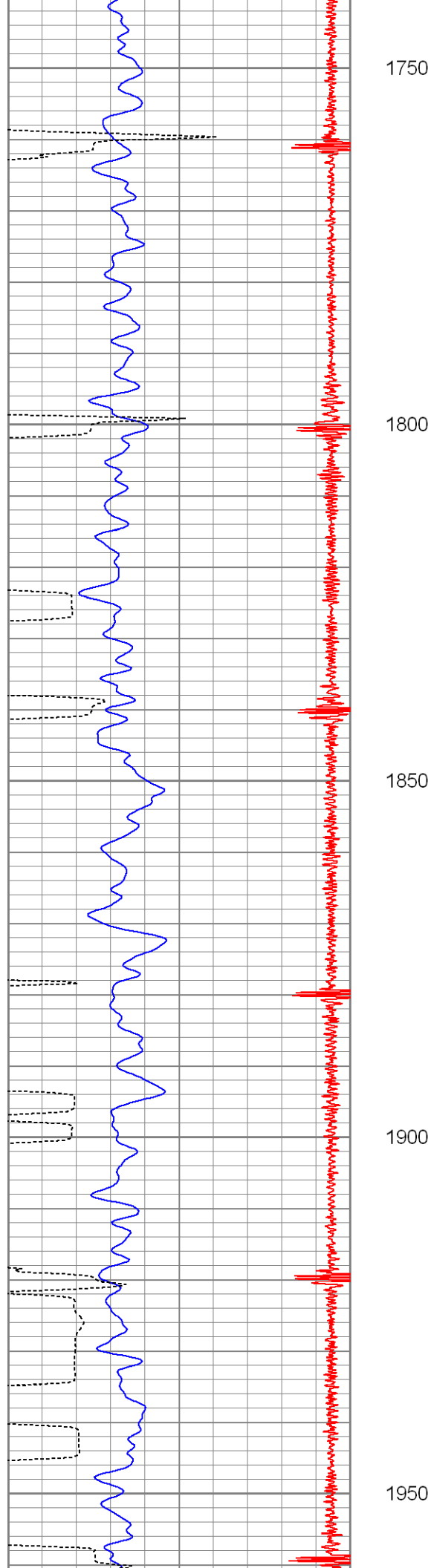


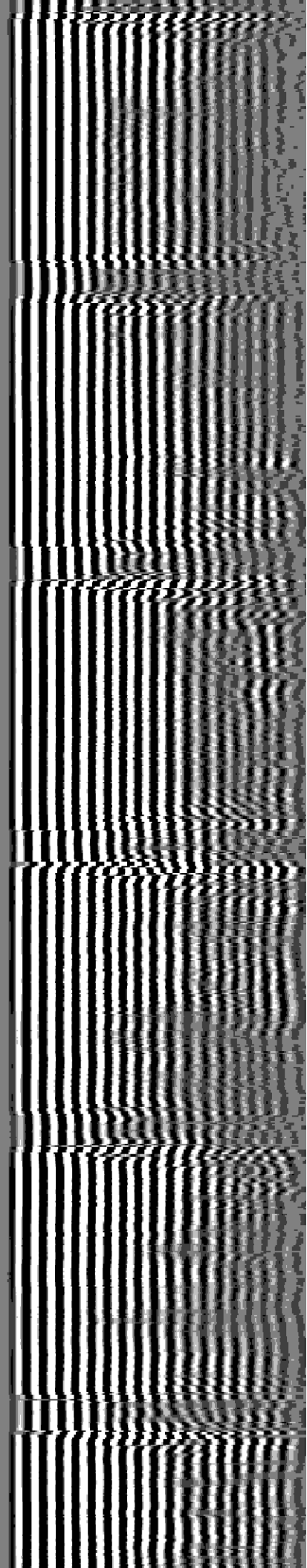
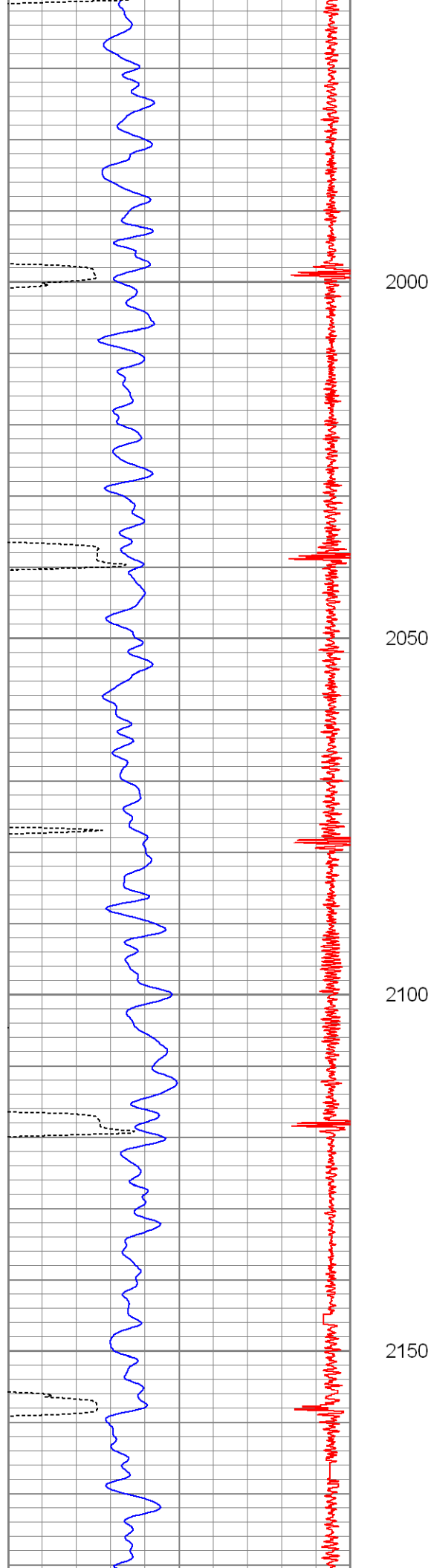


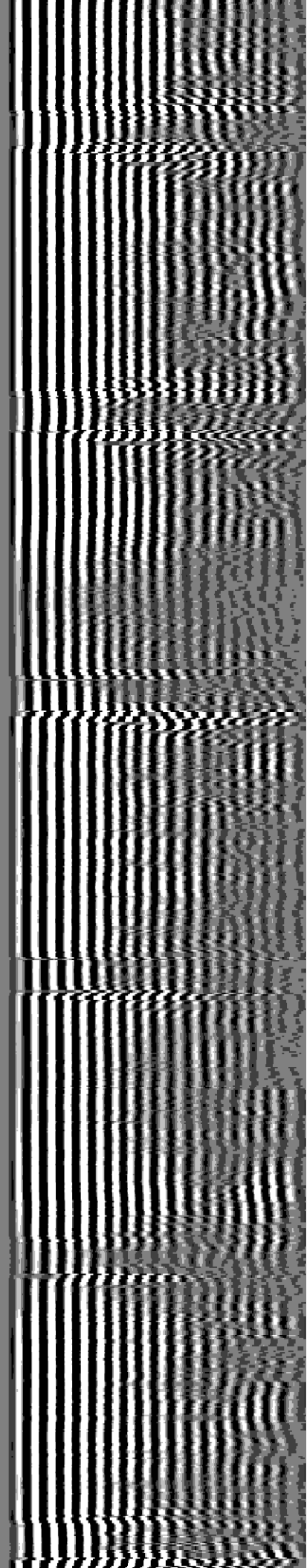
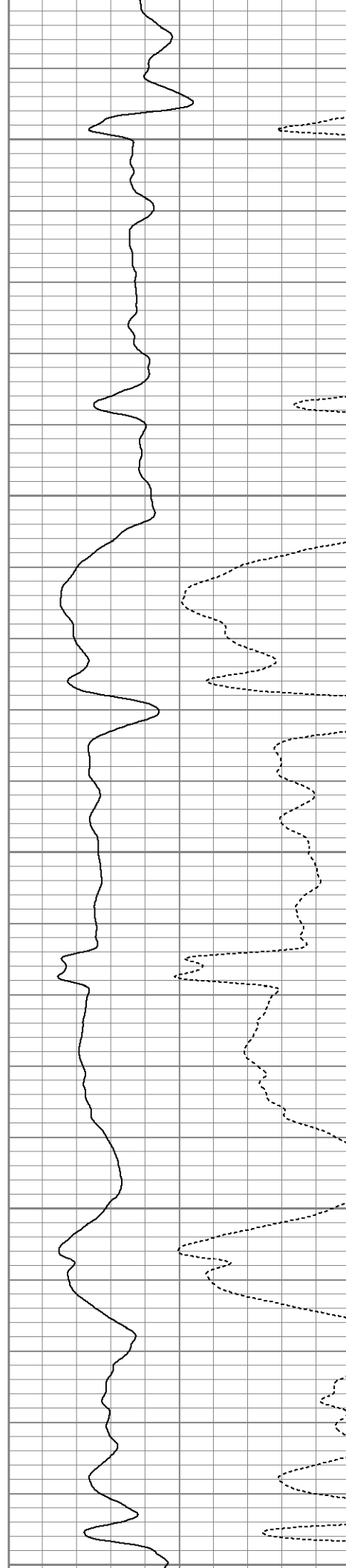
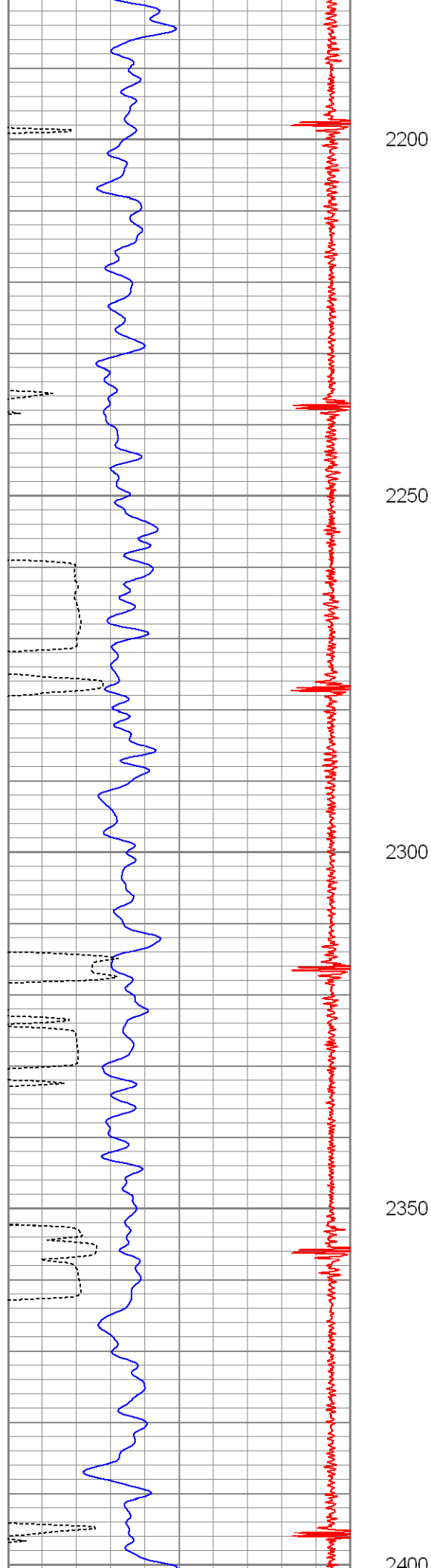


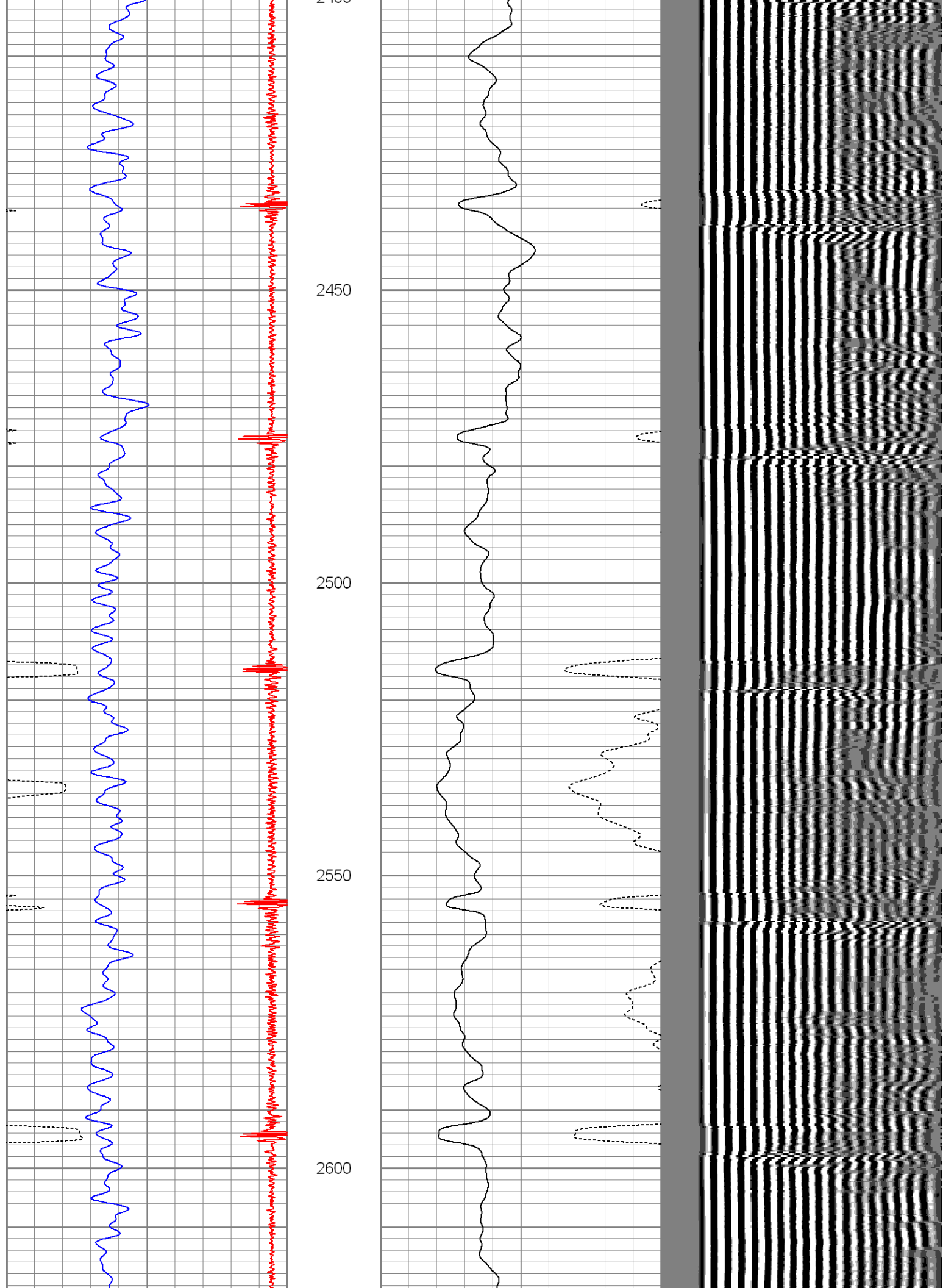


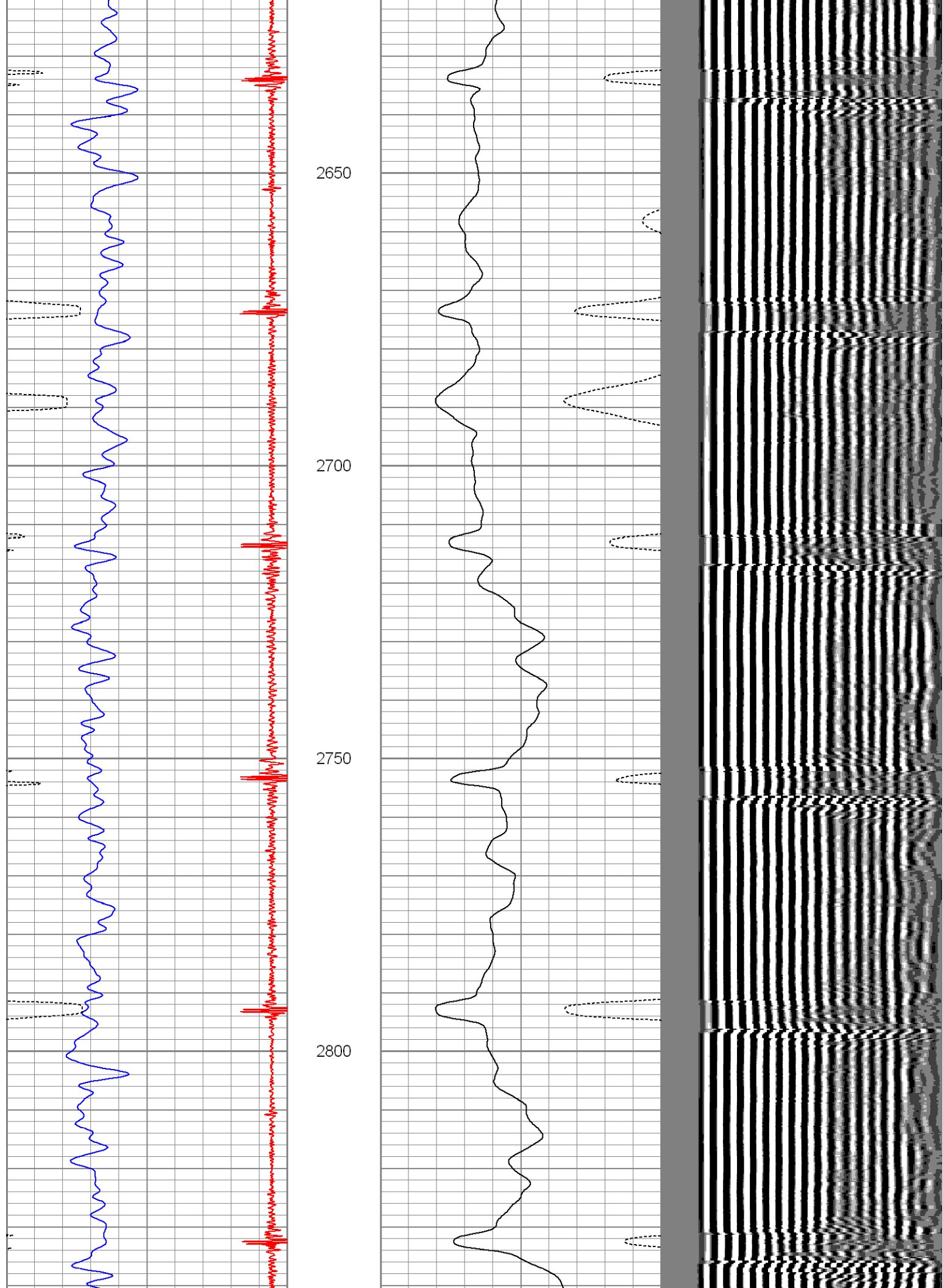


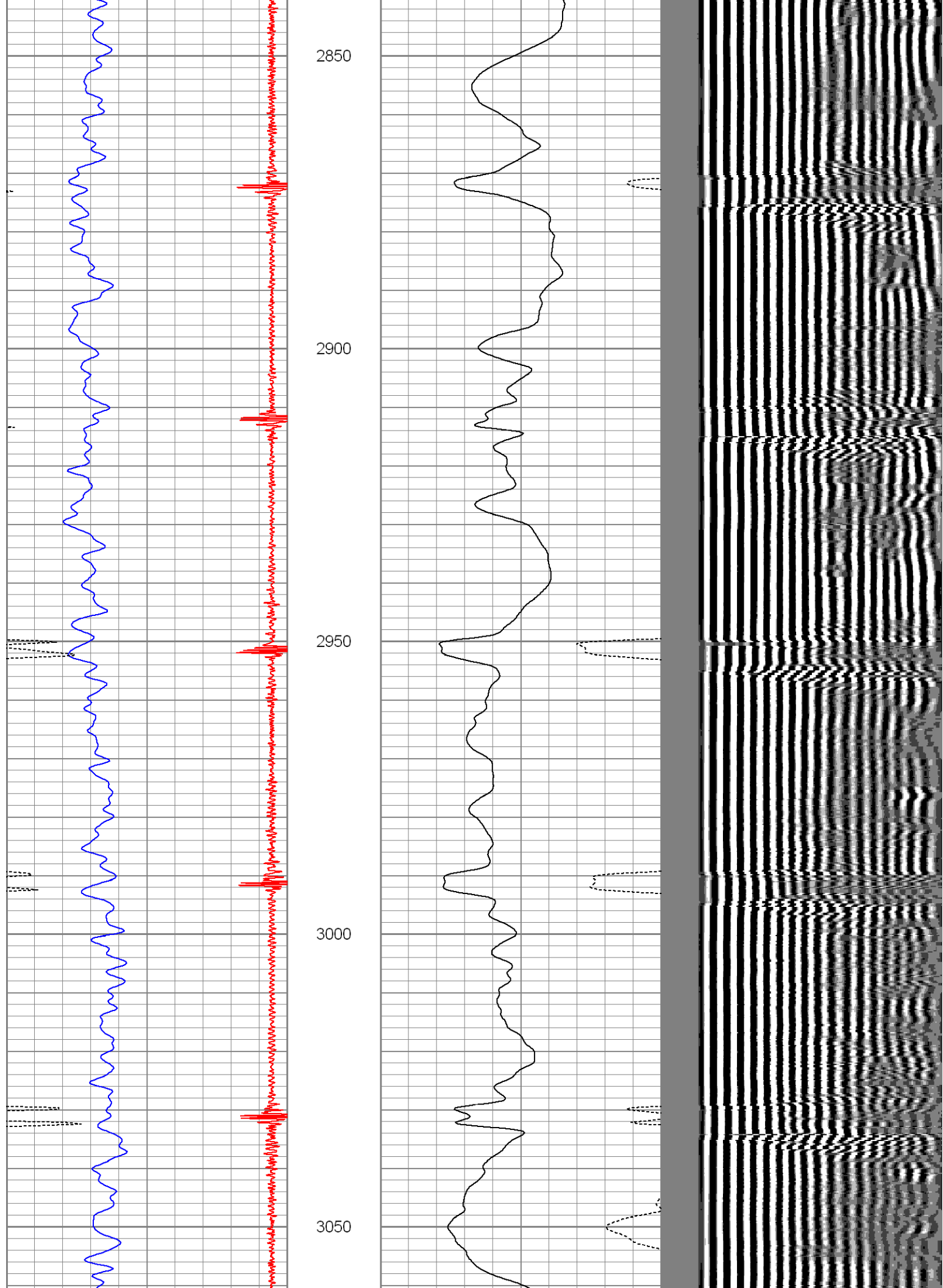


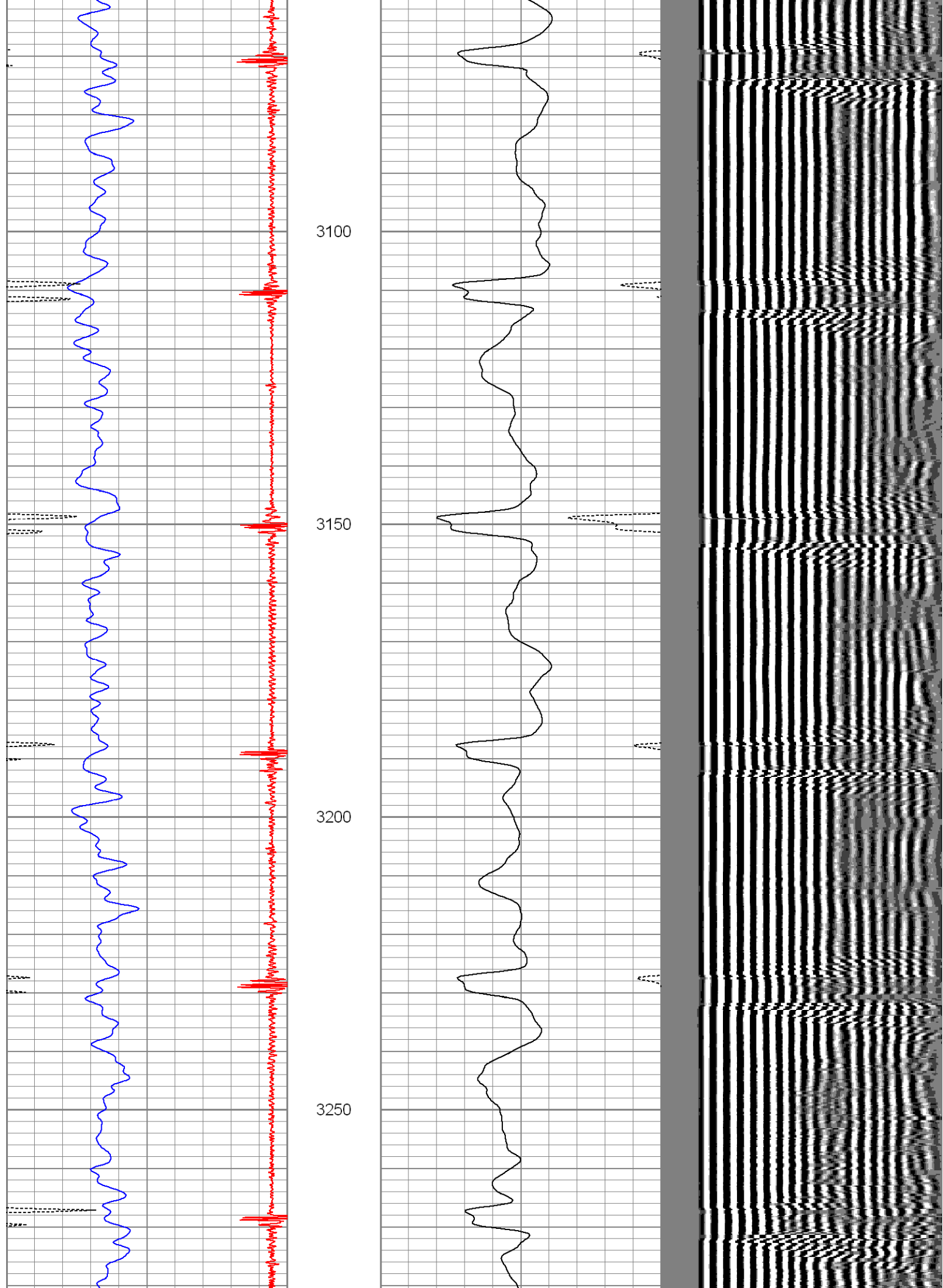


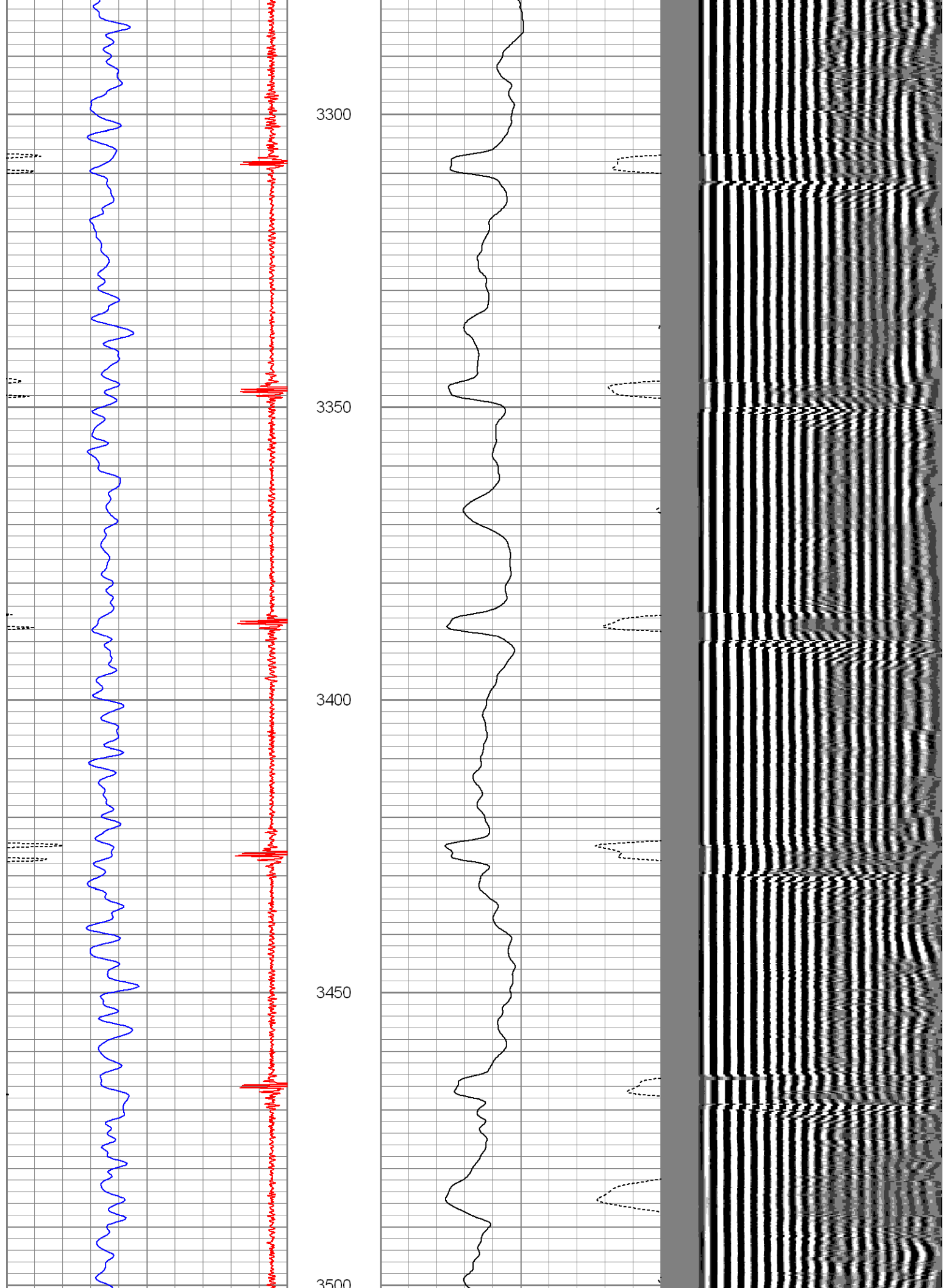


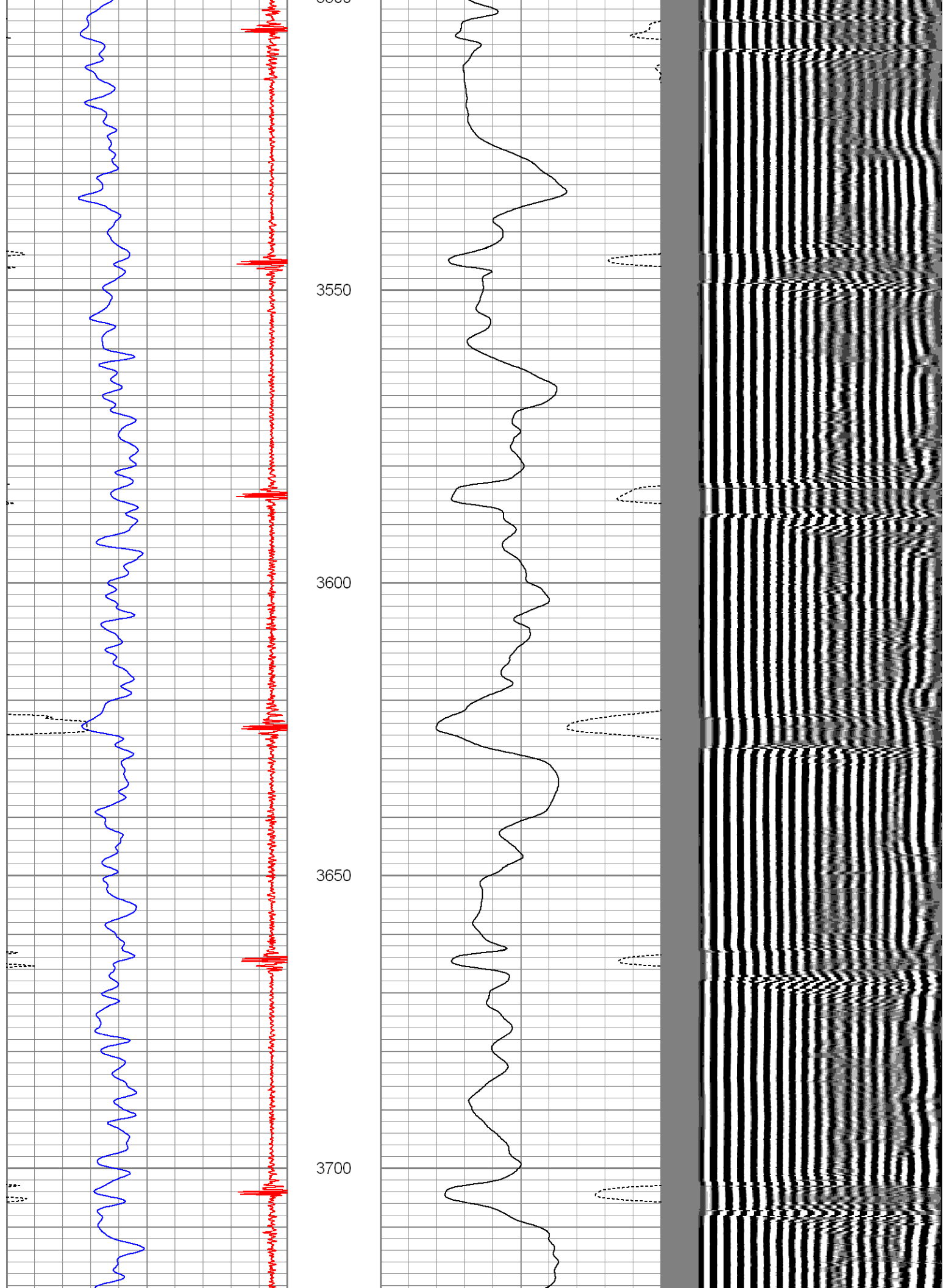


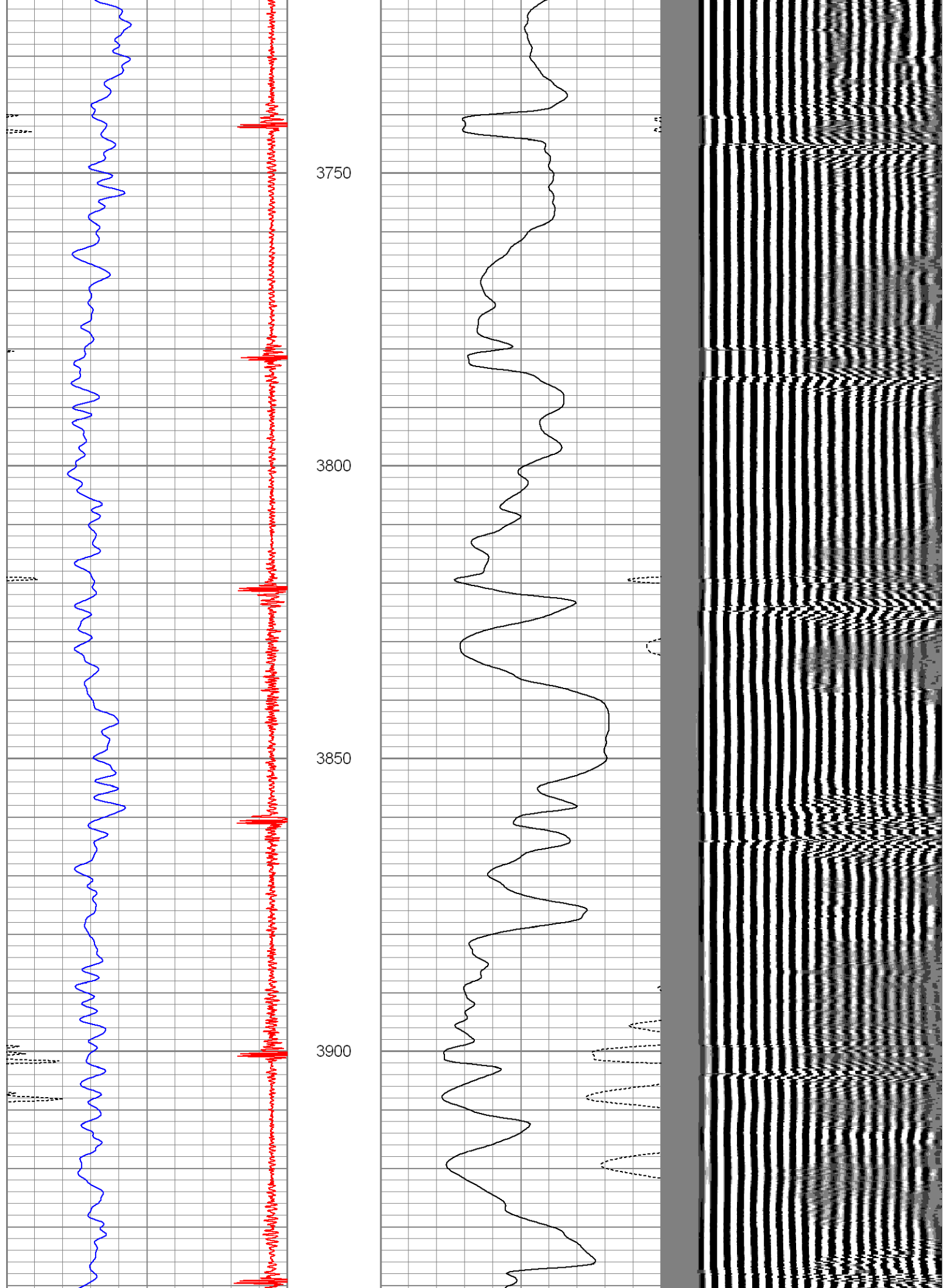


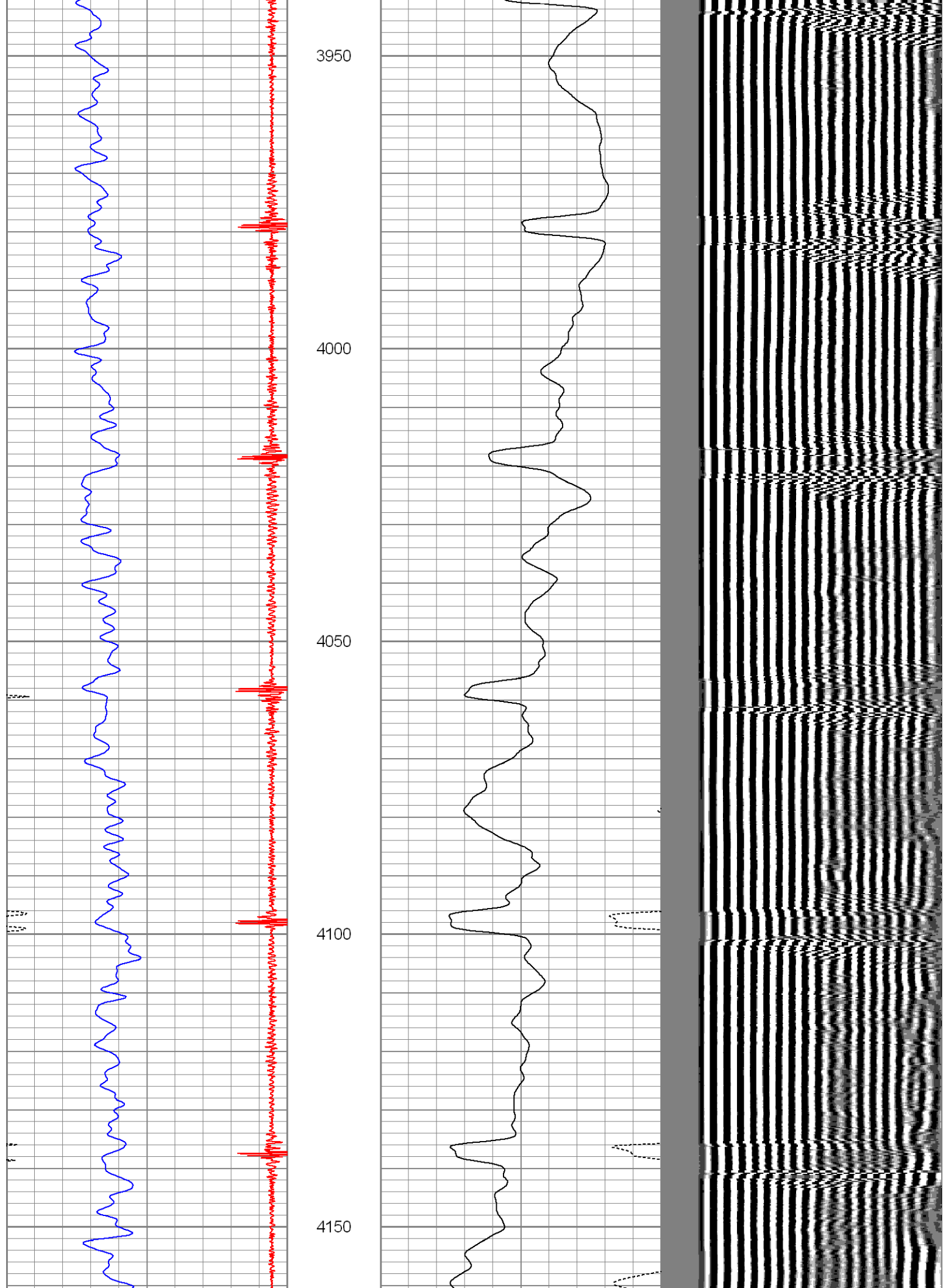


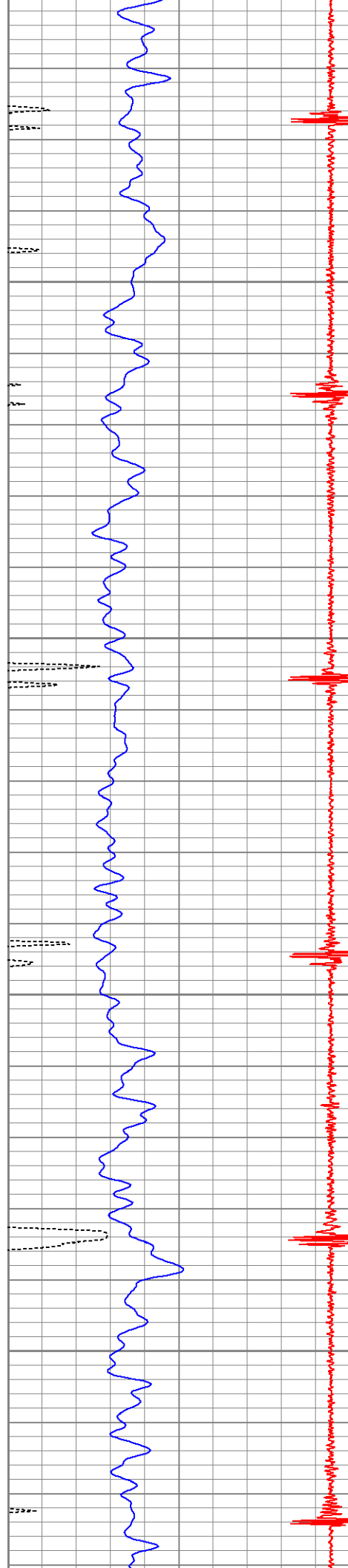












4200

4250

4300

4350

