

WPX ENERGY ROCKY MOUNTAIN LLC-EBUS

RWF 333-25

Nabors 577

Post Job Summary

Cement Surface Casing

Date Prepared: 06/30/2014

Job Date: 06/16/2014

Submitted by: Kory Hugentobler – Grand Junction Cement Engineer

The Road to Excellence Starts with Safety

Sold To #: 300721	Ship To #: 3123584	Quote #:	Sales Order #: 0901433427
Customer: WPX ENERGY ROCKY MOUNTAIN LLC-EBUS	Customer Rep: Vearl Tucker		
Well Name: SAVAGE	Well #: RWF 333-25	API/UWI #: 05-045-22004-00	
Field: RULISON	City (SAP): RIFLE	County/Parish: GARFIELD	State: COLORADO
Legal Description: SW SE-25-6S-94W-1184FSL-1392FEL			
Contractor: NABORS DRLG	Rig/Platform Name/Num: NABORS 577		
Job BOM: 7521			
Well Type: DIRECTIONAL GAS			
Sales Person: HALAMERICA\HB50180	Srvc Supervisor: Carlton Kukus		

Job

Formation Name	
Formation Depth (MD)	Top
Form Type	BHST
Job depth MD	1178ft
Water Depth	Wk Ht Above Floor 5ft
Perforation Depth (MD)	From To

Well Data

Description	New / Used	Size in	ID in	Weight lbm/ft	Thread	Grade	Top MD ft	Bottom MD ft	Top TVD ft	Bottom TVD ft
Casing	0	9.625	9.001	32.3	8 RD	H-40	0	1168	0	1168
Open Hole Section			13.5				0	1178	0	1178

Tools and Accessories

Type	Size in	Qty	Make	Depth ft	Type	Size in	Qty	Make
Guide Shoe	9.625	1		1168	Top Plug	9.625	1	HES
Float Shoe	9.625	1			Bottom Plug	9.625	1	HES
Float Collar	9.625	1			SSR plug set	9.625	1	HES
Insert Float	9.625	1			Plug Container	9.625	1	HES
Stage Tool	9.625	1			Centralizers	9.625	1	HES

Miscellaneous Materials

Gelling Agt	Conc	Surfactant	Conc	Acid Type	Qty	Conc
Treatment Fld	Conc	Inhibitor	Conc	Sand Type	Size	Qty

Fluid Data

Stage/Plug #: 1										
Fluid #	Stage Type	Fluid Name	Qty	Qty UoM	Mixing Density lbm/gal	Yield ft3/sack	Mix Fluid Gal	Rate bbl/min	Total Mix Fluid Gal	
1	Fresh Water	Fresh Water	20	bbl	8.34			4		
Fluid #	Stage Type	Fluid Name	Qty	Qty UoM	Mixing Density lbm/gal	Yield ft3/sack	Mix Fluid Gal	Rate bbl/min	Total Mix Fluid Gal	
2	Lead Cement	VARICEM (TM) CEMENT	145	sack	12.3	2.38		8	13.77	

	VERSASET, 55 LB SK (101376573)
	ECONOLITE (100001580)
	FRESH WATER
	D-AIR 5000, 50 LB SACK (102068797)
94 lbm	TYPE I / II CEMENT, BULK (101439798)
	CAL-SEAL 60, BULK (100064022)
	SALT, BULK (100003695)
	POLY-E-FLAKE (101216940)

Fluid #	Stage Type	Fluid Name	Qty	Qty UoM	Mixing Density lbm/gal	Yield ft3/sack	Mix Fluid Gal	Rate bbl/min	Total Mix Fluid Gal
3	Tail Cement	VARICEM (TM) CEMENT	165	sack	12.8	2.11		8	11.75
11.71 Gal		FRESH WATER							

Fluid #	Stage Type	Fluid Name	Qty	Qty UoM	Mixing Density lbm/gal	Yield ft3/sack	Mix Fluid Gal	Rate bbl/min	Total Mix Fluid Gal
4	Displacement	Displacement	89	bbl	8.34			10	

Cement Left In Pipe	Amount	Reason
	37 ft	Shoe Joint

Comment 20 BBLS OF CEMENT TO SURFACE

HALLIBURTON

WPX ENERGY ROCKY MOUNTAIN LLC-EBUS

Cement Surface Casing
WPX SAVAGE RWF 333-25 RTD

4.1 Job Event Log

Type	Seq. No.	Activity	Graph Label	Date	Time	Source	Downhole Density (ppg)	Combined Pump Rate (bbl/min)	Pass-Size Pump Pressure (psi)	Pump Stage Total (bbl)	Comment
Event	1	Start Job	Start Job	6/16/2014	08:30:31	USER					TD: 1178FT TP: 1168FT SJ: 37FT OH: 13.5" CSG: 9.625 32.3# H-40 MUD WT: 9.6 PG VISC: 85
Event	2	Prime Pumps	Fill Lines	6/16/2014	08:31:34	USER	8.33	2	28.72	2	FILL LINES TO PRESSURE TEST
Event	3	Pressure Test	Pressure Test	6/16/2014	08:35:25	USER	8.37	0.00	3468.47	2	PRESSURE TEST LINES TO 3000 PSI, PRESSURE TEST OK
Event	4	Pump Spacer	Pump Spacer	6/16/2014	08:38:43	USER	8.25	4	446	20	20 BBL FRESH WATER SPACER
Event	5	Pump Lead Cement	Pump Lead Cement	6/16/2014	08:47:41	USER	12.3	8	353	64	145 SKS OF VARICEM CEMENT 12.3PPG 2.38YIELD 13.77 GAL/SK WEIGHT OF CEMENT VERIFIED VIA MUD SCALES THROUGHOUT LEAD CEMENT
Event	6	Pump Tail Cement	Pump Tail Cement	6/16/2014	08:57:48	USER	12.8	8	368	58	165 SKS OF VARICEM CEMENT 12.8 PPG 2.11 YIELD 11.75 GAL/SK WEIGHT OF CEMENT VERIFIED VIA MUD SCALES THROUGHOUT TAIL CEMENT
Event	7	Shutdown	Shutdown	6/16/2014	09:06:52	USER	10.83	0.00	0.60	58.0	SHUTDOWN END OF CEMENT, HES WASHED UP ON TOP OF PLUG
Event	8	Pump Displacement	Pump Displacement	6/16/2014	09:09:17	USER	8.34	10	574	78	FRESH WATER DISPLACEMENT
Event	9	Slow Rate	Slow Rate	6/16/2014	09:22:10	USER	8.34	2	281	10	SLOW RATE TO BUMP THE PLUG
Event	10	Bump Plug	Bump Plug	6/16/2014	09:26:40	USER	8.20	0	936	88	BUMPED THE PLUG AT 281 PSI TOOK TO 936 PSI

HALLIBURTON

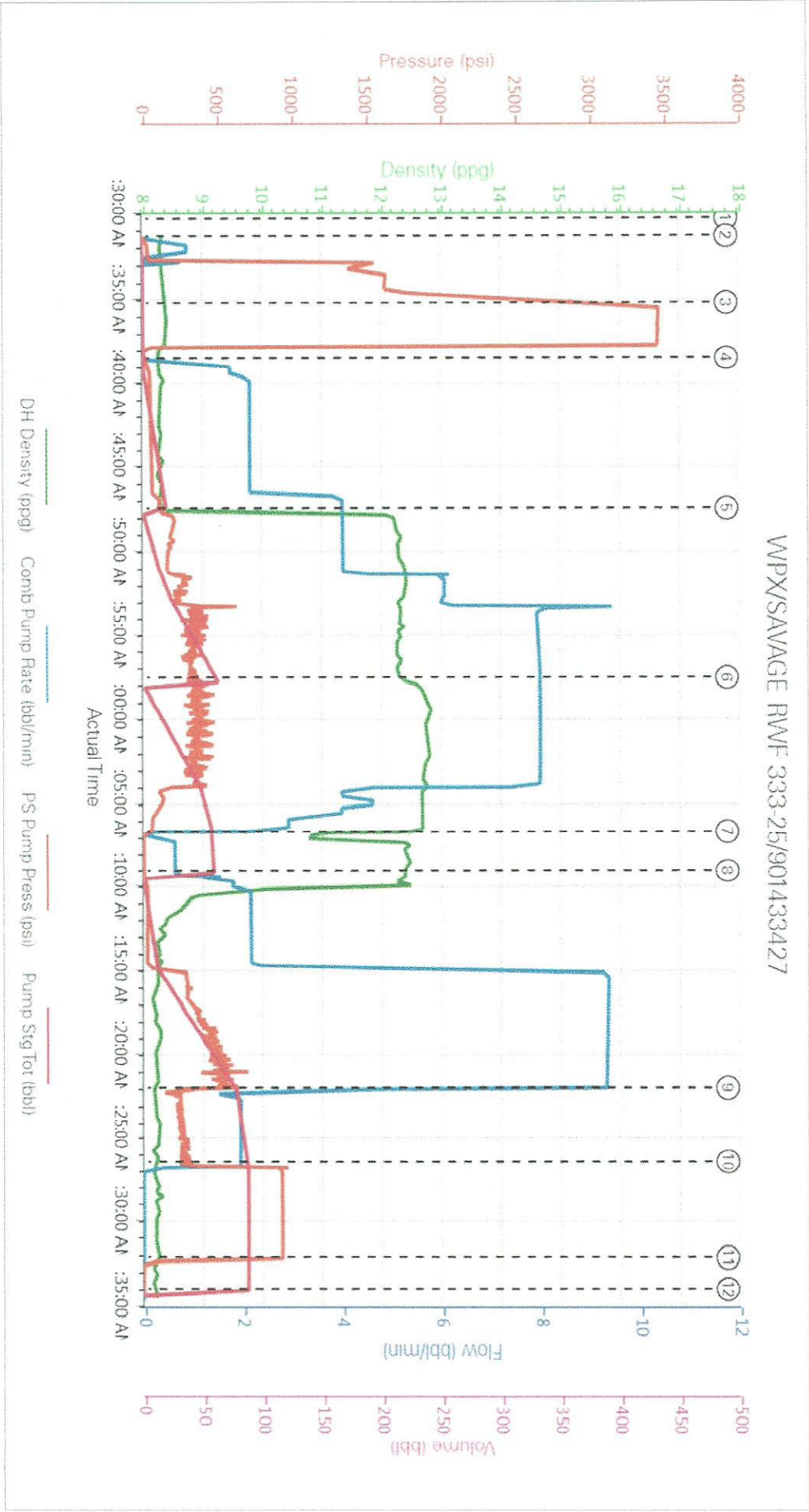
WPX ENERGY ROCKY MOUNTAIN LLC-EBUS

Cement Surface Casing
WPX SAVAGE RWF 333-25 RTD

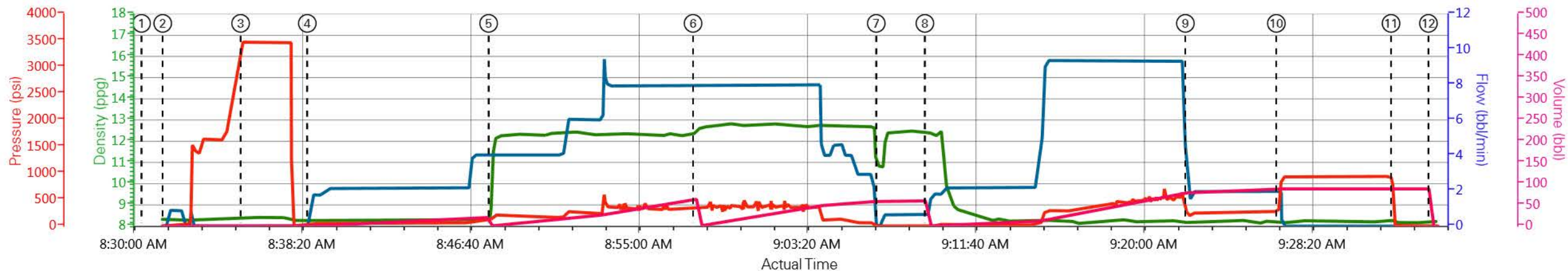
Event	11	Check Floats	Check Floats	6/16/2014	09:32:21	USER	8.23	0.00	24.04	88	FLOATS HELD .5 BBL BACK TO TANKS, 20 BBLS OF CEMENT TO SURFACE
Event	12	End Job	End Job	6/16/2014	09:34:12	USER	8.23	0.00	-2.22	0.0	THANK YOU FOR CHOOSING HALLIBURTON CEMENT CARL KUKUS AND CREW

5.0 Custom Graphs

5.1 Custom Graph



WPX/SAVAGE RWF 333-25/901433427



— DH Density (ppg)
 — Comb Pump Rate (bbl/min)
 — PS Pump Press (psi)
 — Pump Stg Tot (bbl)

① Start Job n/a;n/a;n/a;n/a	④ Pump Spacer 8.25;0.95;14.66;0.04	⑦ Shutdown 10.83;0;0.6;58.03	⑩ Bump Plug 8.2;1.96;350.29;87.51
② Fill Lines 8.33;0;28.72;0	⑤ Pump Lead Cement 9.68;4.01;129.04;0.5	⑧ Pump Displacement 12.43;0.63;4.35;59.5	⑪ Check Floats 8.23;0;24.04;87.68
③ Pressure Test 8.37;0;3468.47;0.71	⑥ Pump Tail Cement 12.43;7.98;294.98;63.23	⑨ Slow Rate 8.19;2.96;255.6;78.62	⑫ End Job 8.23;0;-2.22;0

▼ **HALLIBURTON** | iCem® Service

Created: 2014-06-16 10:11:43, Version: 3.0.121

Edit

Customer: WPX ENERGY ROCKY MOUNTAIN LLC-EBUS

Job Date: 6/16/2014 8:31:14 AM

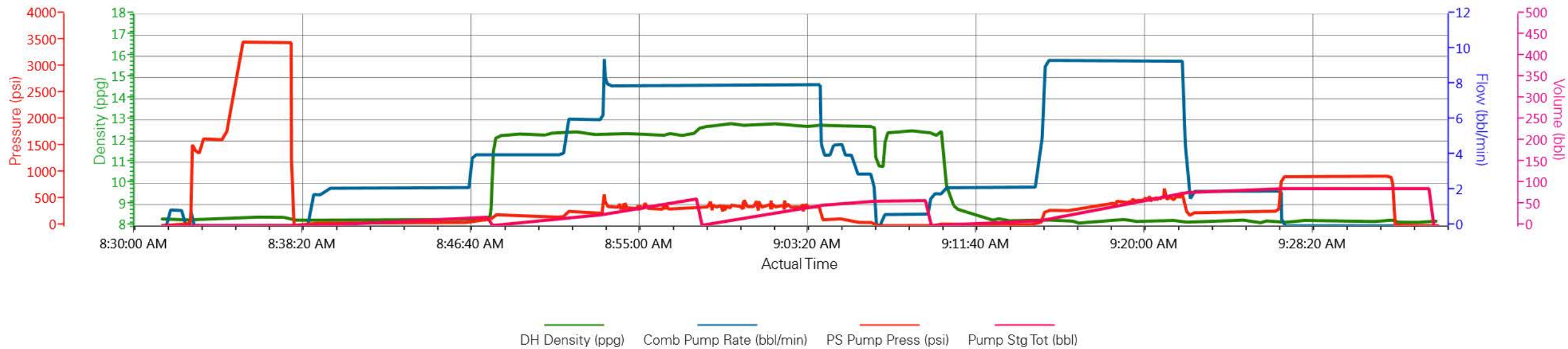
Well: Savage RWF 333-25

Representative: VEARL TUCKER

Sales Order #: 901433427

Supervisor/Operator: Carlton Kukus/Andrew Schanz E-2

WPX/SAVAGE RWF 333-25/901433427



EVENT #	EVENT	VOLUME	SACKS	WEIGHT	YIELD	GAL/ SK
1	Start Job					
6	Test Lines	3000.0				
	Fresh Water Spacer	20.0		8.34		
	LEAD CEMENT	61.5	145	12.3	2.38	13.77
15	Tail Cement	62.0	165	12.8	2.11	11.75
	SHUTDOWN/DROP PLUG	0.0				
23	Displace w/Fresh Water	89.0		8.34		
	SLOW RATE	79.0				
26	Land Plug	275.0		500	OVER	
2	Release Psi / Job Over	0.0				
			Do Not Overdisplace			
DISPLACEMENT	TOTAL PIPE	SHOE JOINT LENGTH		FLOAT COLLAR	BBL/FT	H2O REQ.
89.01	1168	37.00		1131.00	0.0787	204
PSI to Lift Pipe	443	***** <u>Use Mud Scales on Each Tier</u> *****				
Total Displacement	104.99					
CALCULATED DIFFERENTIAL PSI		275		TOTAL FLUID PUMPED		233
Collapse		Burst			SO#	901433427