



FILE NO: CH087672	COMPANY WPX ENERGY
API NO: 05045220040000	WELL SAVAGE RWF 333-25
	FIELD RULISON
	COUNTY GARFIELD
	STATE CO
Ver. 3.87 S25 T6S R94W PAD: 43-25 RIG: NABORS 577	LOCATION: SHL: 1184' FSL 1392' FEL BHL: 2120' FSL 1764' FEL SEC 25 TWP 6S RGE 94W
PERMANENT DATUM LOG MEASURED FROM DRILL. MEAS. FROM	OTHER SERVICES RPM ELEVATIONS: KB 6260 FT DF GL 6234 FT

DATE	02-Jul-2014		
RUN	TRIP	1	1
SERVICE ORDER	US087672		
DEPTH DRILLER	8862 FT		
DEPTH LOGGER	8830 FT		
BOTTOM LOGGED INTERVAL	8820 FT		
TOP LOGGED INTERVAL	4700 FT		
TIME STARTED	1600		
TIME FINISHED	2300		
OPERATOR RIG TIME	8.0		
TYPE OF FLUID IN HOLE	WATER		
FLUID DENSITY	NA		
FLUID SALINITY	NA		
FLUID LEVEL	95 FT		
LOGGED CEMENT TOP	NA		
WELLHEAD PRESSURE	0 PSI		
MAXIMUM HOLE DEVIATION	NA		
NOMINAL LOGGING SPEED	65 F/MN		
MAX. RECORDED TEMP.	223 DEGF		
REFERENCE LOG	NA		
REFERENCE LOG DATE	NA		
EQUIP. NO.	LOCATION	6670	GRAND JCT
RECORDED BY	D SMITH		
WITNESSED BY	C ABBLEGATE		

IN MAKING INTERPRETATIONS OF LOGS OUR EMPLOYEES WILL GIVE THE CUSTOMER THE BENEFIT OF THEIR BEST JUDGEMENT. BUT SINCE ALL INTERPRETATIONS ARE OPINIONS BASED ON INFERENCES FROM ELECTRICAL OR OTHER MEASUREMENTS, WE CANNOT, AND WE DO NOT GUARANTEE THE ACCURACY OR CORRECTNESS OF ANY INTERPRETATION. WE SHALL NOT BE LIABLE OR RESPONSIBLE FOR ANY LOSS, COST, DAMAGES, OR EXPENSES WHATSOEVER INCURRED OR SUSTAINED BY THE CUSTOMER RESULTING FROM ANY INTERPRETATION MADE BY ANY OF OUR EMPLOYEES.

BOREHOLE RECORD		
BIT SIZE	FROM	TO
13.5 IN	0 FT	1114 FT
8.75 IN	1114 FT	8866 FT

CASING RECORD				
SIZE	WEIGHT	GRADE	FROM	TO
9.625 IN	32.2 LB/F		0 FT	1114 FT
4.5 IN	11.6 LB/F		0 FT	8866 FT

### REMARKS

RUN 1 TRIP 1: ALL DATA ON THIS LOG IS SHIFTED USING THE CCL CURVE TO PLACE THE WELLHEAD (TOP CCL MARK) ON DEPTH WITH GROUND LEVEL ELEVATION AT CLIENT'S REQUEST

THE DEPTH MATCHING PROCESS CREATES POTENTIAL FOR COLLAR LENGTHS TO VARY FROM THOSE RECORDED ON OTHER CASED HOLE WIRELINE UNITS WITHOUT GAMMA RAY REFERENCE

AMOUNT LINEAR SHIFT -2.0

LOGGED WITH 0 PSI AT WELL HEAD

BHT = 223 DEGF

SJ = 5204' TO 5224'

THANK YOU FOR CHOOSING BAKER HUGHES WIRELINE SERVICES

CREW: SMITH/HOLLER/BAUGHMAN

#### EQUIPMENT DATA

RUN	TRIP	TOOL	SERIES NO.	SERIAL NO.	POSITION
1	1	ELECTRONICS	8250EA	10314363	FREE
1	1	TELE	8248ED	Z120493	FREE
1	1	GR	8262xa	10317216	FREE
1	1	RPM	8281EA	10273848	FREE
1	1	RPM	8283PA	10585555	FREE
1	1	RPM	8281FA	10307727	FREE
1	1	TEMP	8255XA	11774568	FREE

### MAIN LOG 5"/100FT SCALE

ECLIPS 6.2i ECLIPS General Release Rel 6.2i Wed Jun 12 12:21:40 CDT 2013

Updates: 1

Plotted: Thu Jul 3 19:18:12 2014

#### PARAMETER AND FILTER SUMMARY REPORT

FILE: /dat1a/CH087672/n353hr01.prm  
LOGGING MODE: DEPTH DIRECTION: UP  
TOP DEPTH: 4489.750 ft BOTTOM DEPTH: 8832.000 ft

#### SYMMETRIC FILTER

MEASUREMENT TYPE	PARAMETER	VALUE	UNITS	INTERVAL (ft)
GR	FILTER ()	medium (1)		TOP BOTTOM

#### RPM PROCESSING

MEASUREMENT TYPE	PARAMETER	VALUE	UNITS	INTERVAL (ft)
PNC Parameters	BOREHOLE CONTENTS	FLUID		TOP BOTTOM
	OPEN/CASED HOLE	CASED HOLE		" "
	BOREHOLE SIZE	8.75	in	" "
	CASING SIZE	4.50	in	" "
	MATRIX	SANDSTONE		" "
	CORRECTION BUFFER	11		" "

#### CURVE DESCRIPTION REPORT

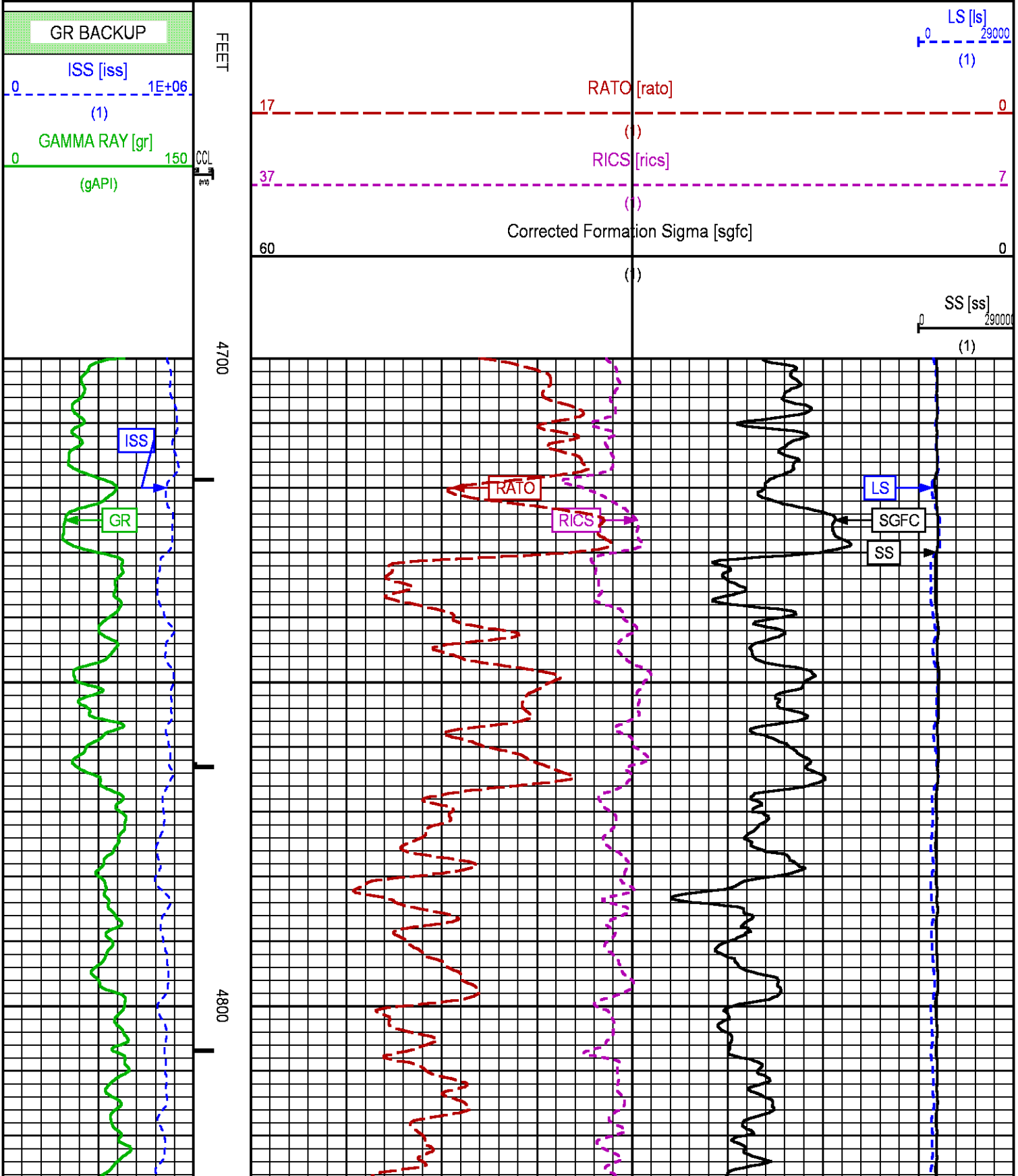
CURVE NAME	CREATION DATE	CURVE DESCRIPTION
F1:CCL	Jul 2 22:05:48 2014	CASING COLLAR LOCATOR
F1:GR	Jul 2 22:05:48 2014	GAMMA RAY
F1:ISS	Jul 2 22:05:48 2014	INELASTIC SHORT SPACE COUNT RATE
F1:LS	Jul 2 22:05:48 2014	LONG SPACE COUNT RATE
F1:RATO	Jul 2 22:05:48 2014	SHORT/LONG SPACE COUNT RATE RATIO
F1:RICS	Jul 2 22:05:48 2014	SHORT SPACE INELASTIC TO CAPTURE COUNT RATE RATIO (ISS/CSS)
F1:SGFC	Jul 2 22:05:48 2014	CORRECTED FORMATION SIGMA
F1:SS	Jul 2 22:05:48 2014	SHORT SPACE COUNT RATE

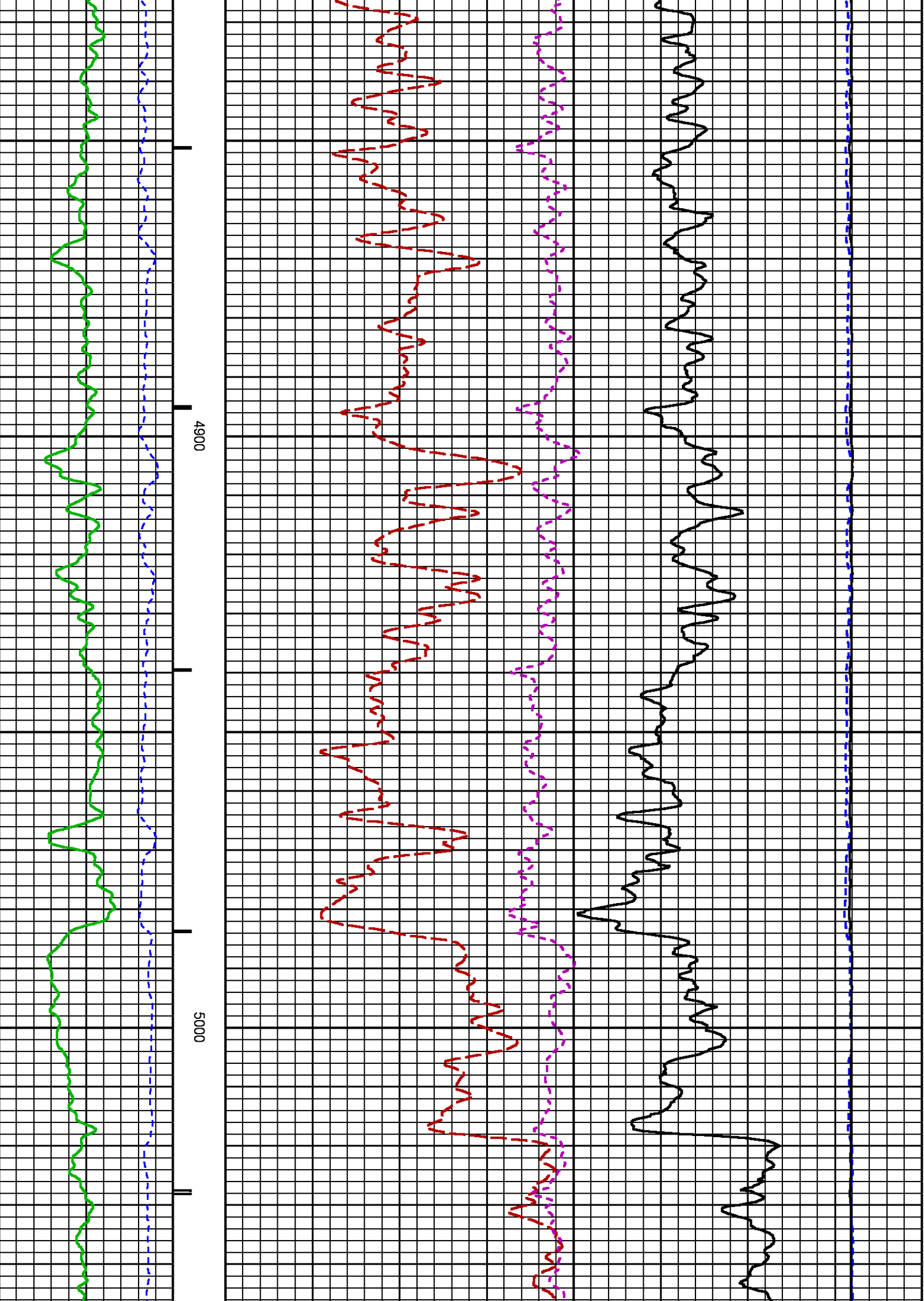
#### CURVE MEASURE POINT OFFSET

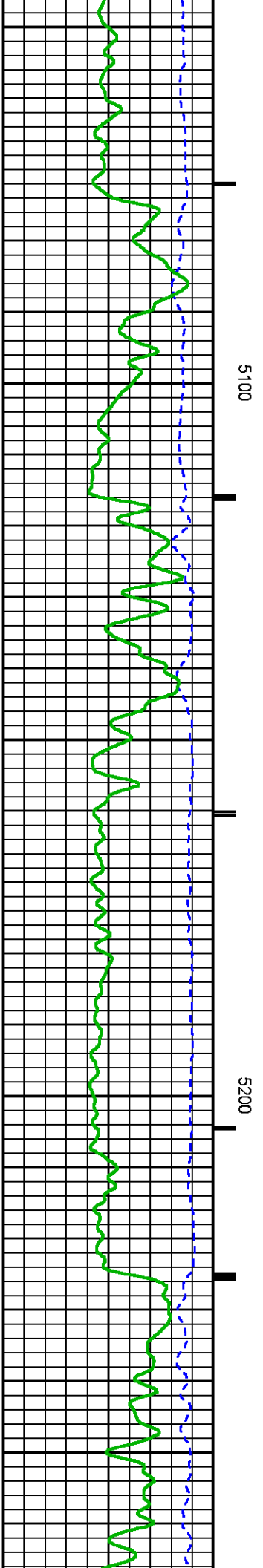
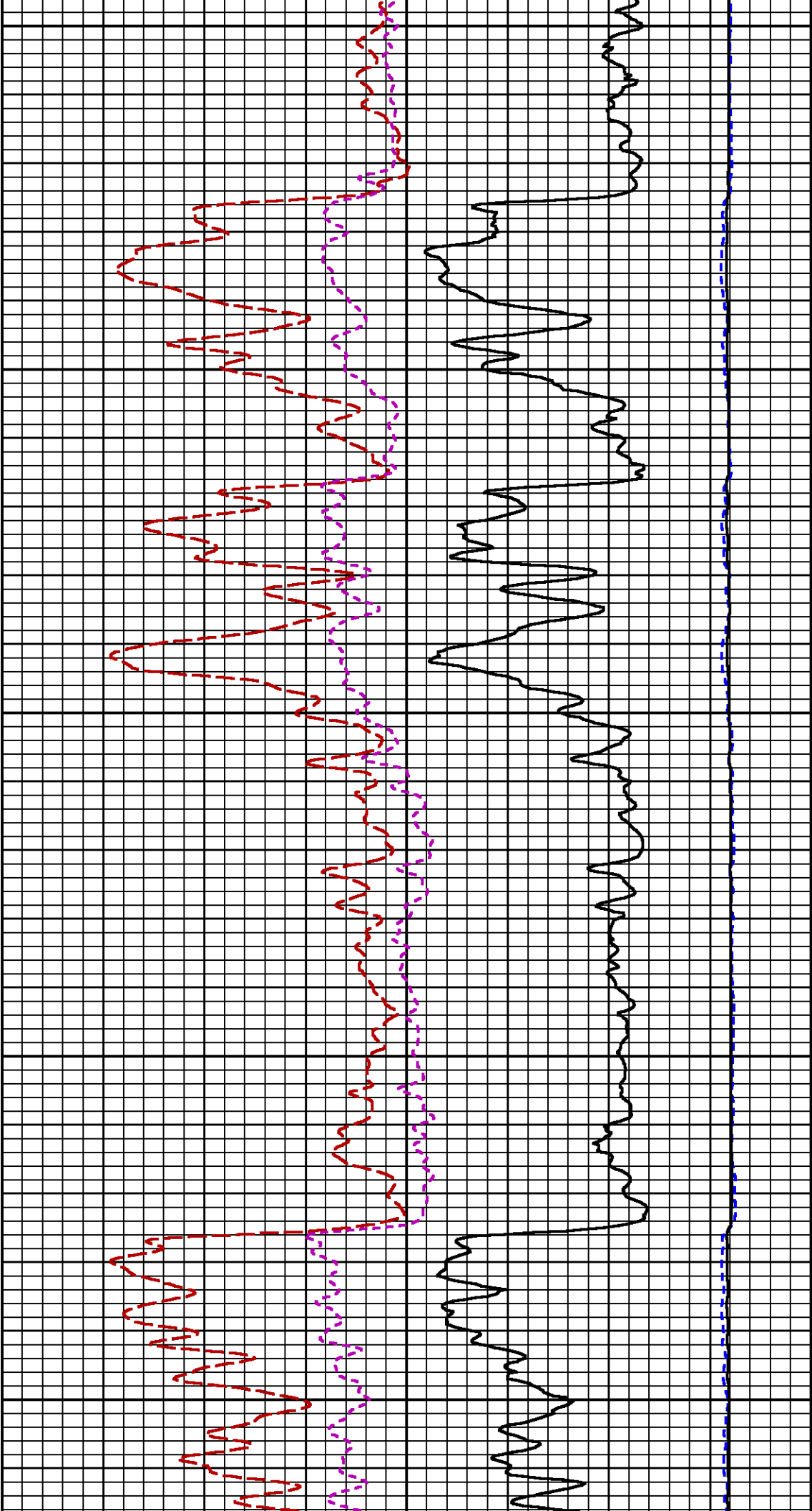
CURVE	OFFSET (ft)	CURVE	OFFSET (ft)	CURVE	OFFSET (ft)	CURVE	OFFSET (ft)
CCI	26.00	ISS	12.75	RATO	12.75	SGFC	12.75

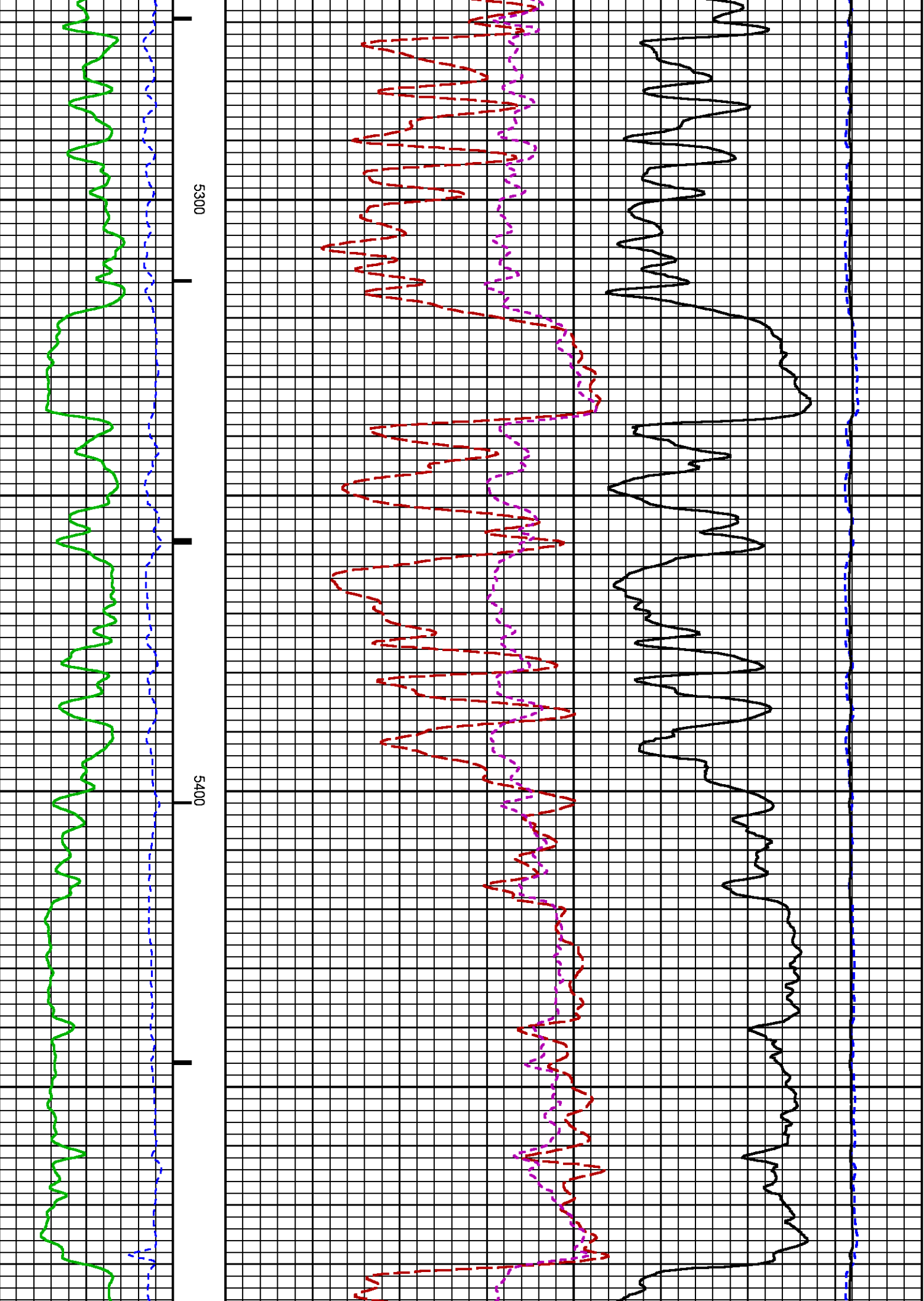
GR	23.00	LS	12.75	RICS	12.75	SS	12.75
----	-------	----	-------	------	-------	----	-------

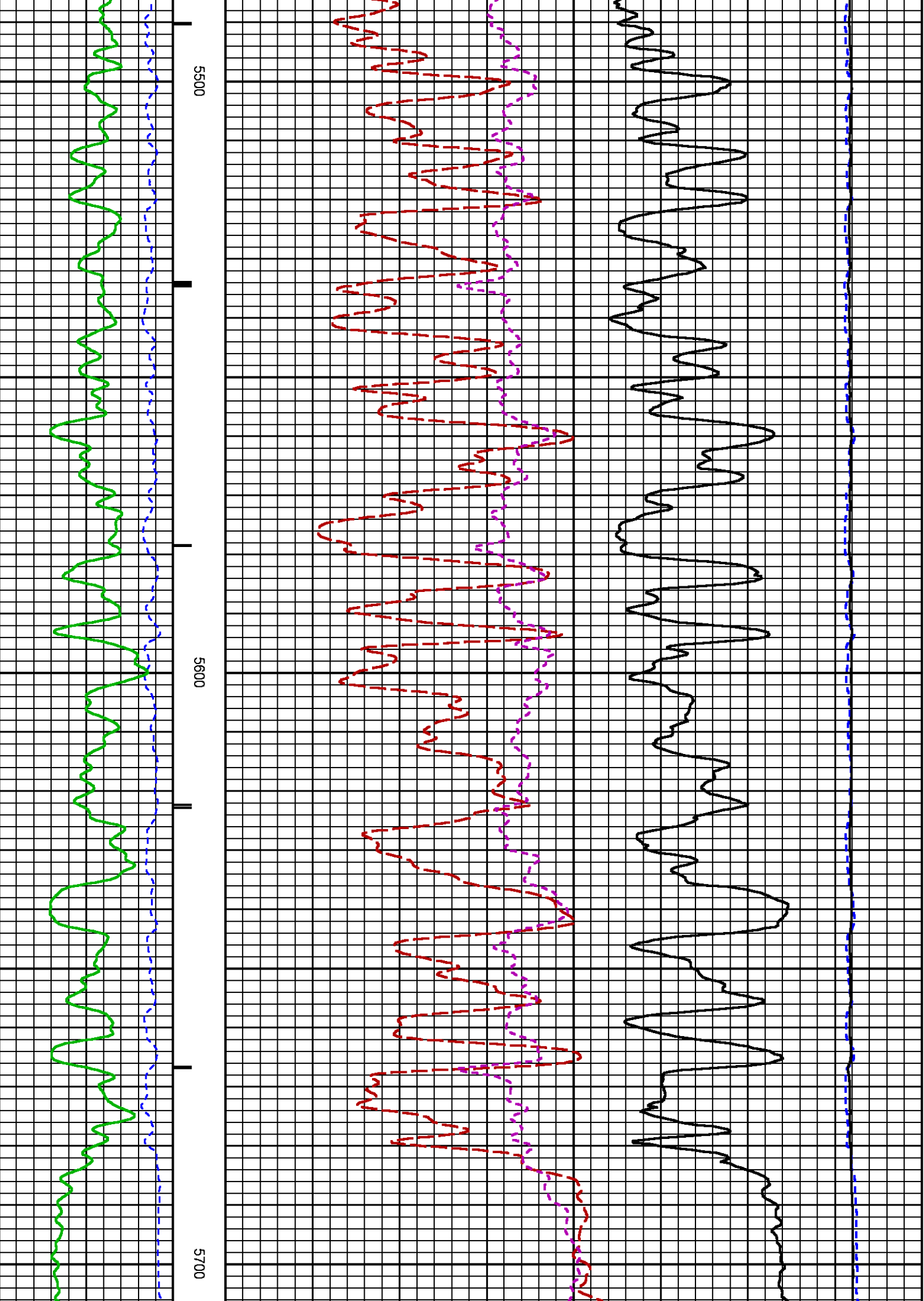
Presentation	: HL6670:WPX_rpm_MAIN.fvpdf [5"/100' Scale]
Plot Interval	: 4700 - 8832.5 Feet
Data File 1	: F1 : HL6670:/dat1a/CH087672/RDR_MAIN.xtf
Created On	: Jul 2 22:05:48 2014
Company	: WPX ENERGY
Well	: SAVAGE RWF 333-25
Field	: RULISON
File Interval	: 24.5 - 8832.5 Feet
OCT	: n353h

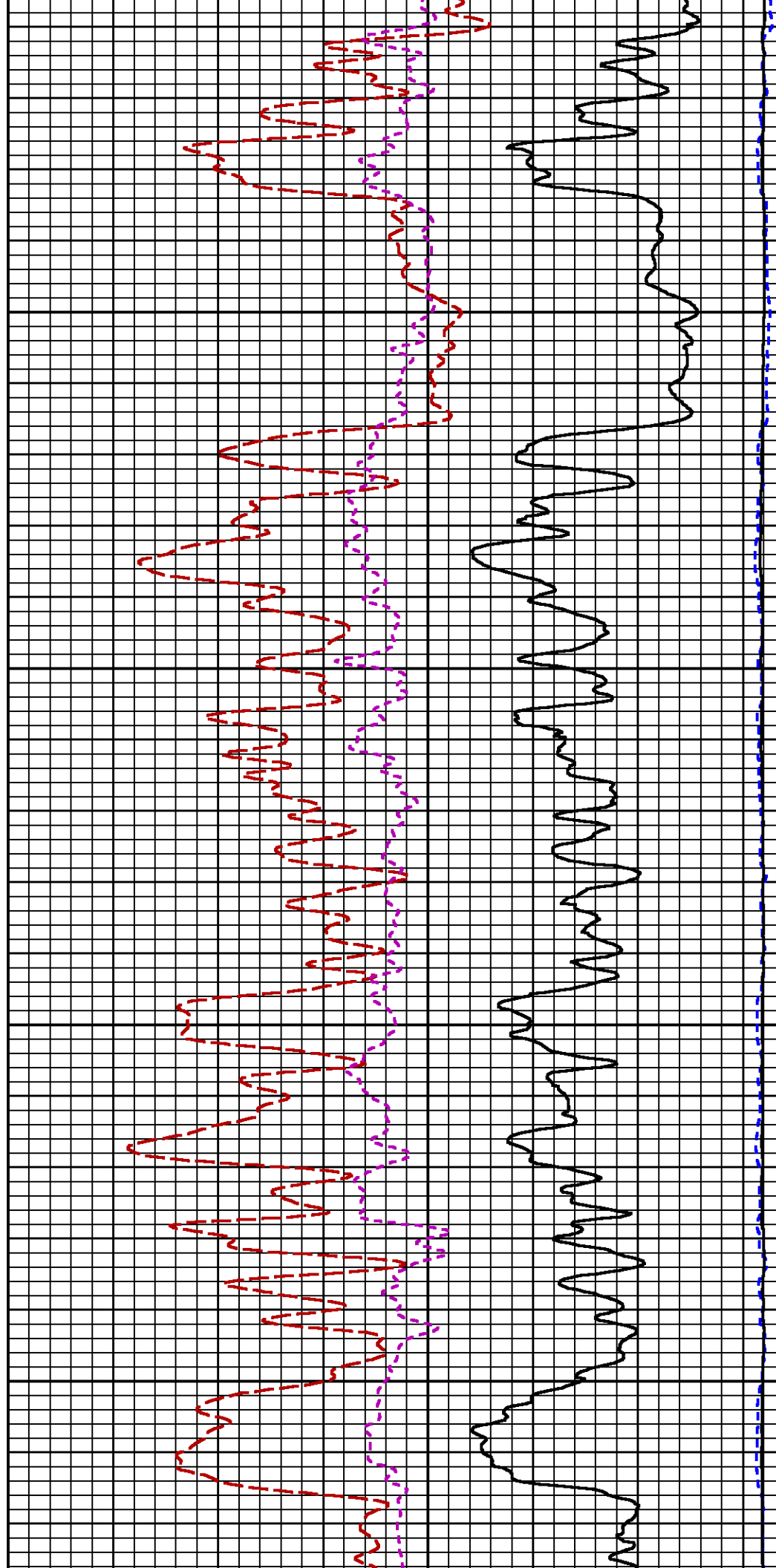
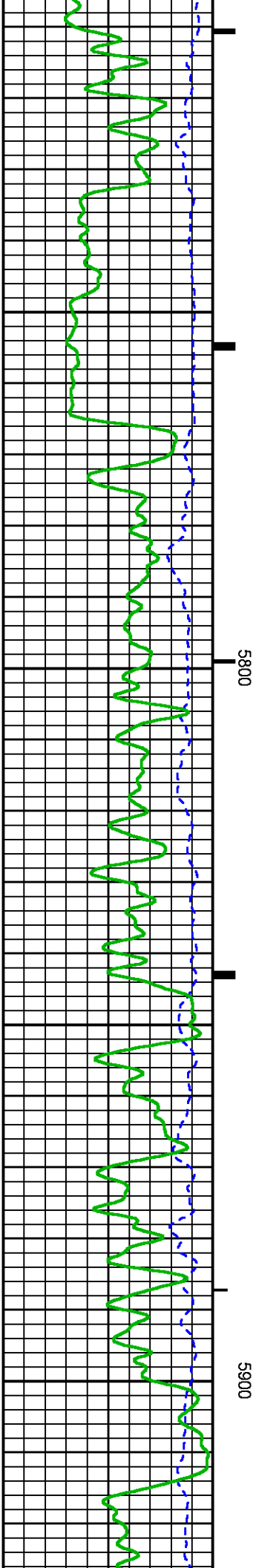




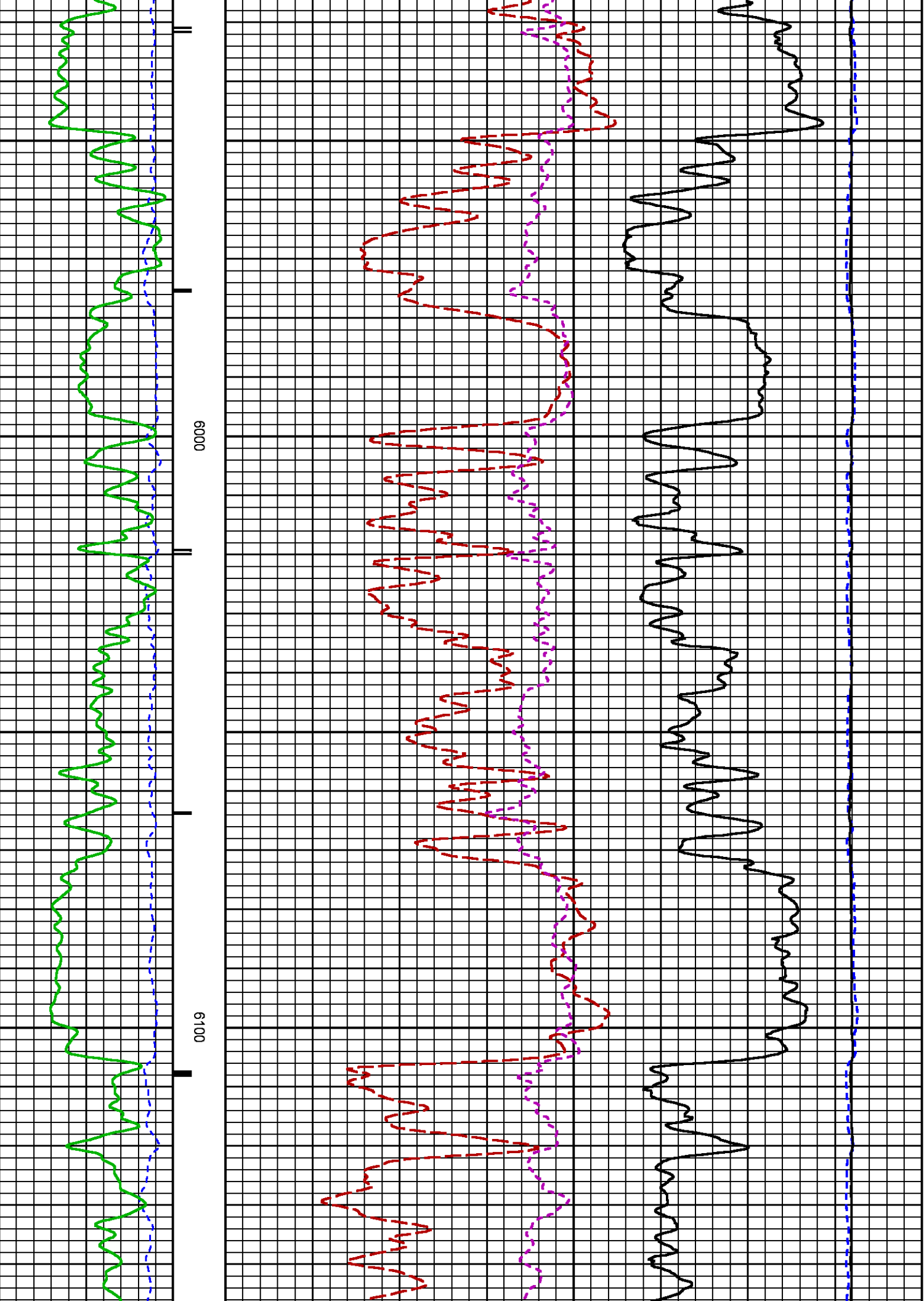


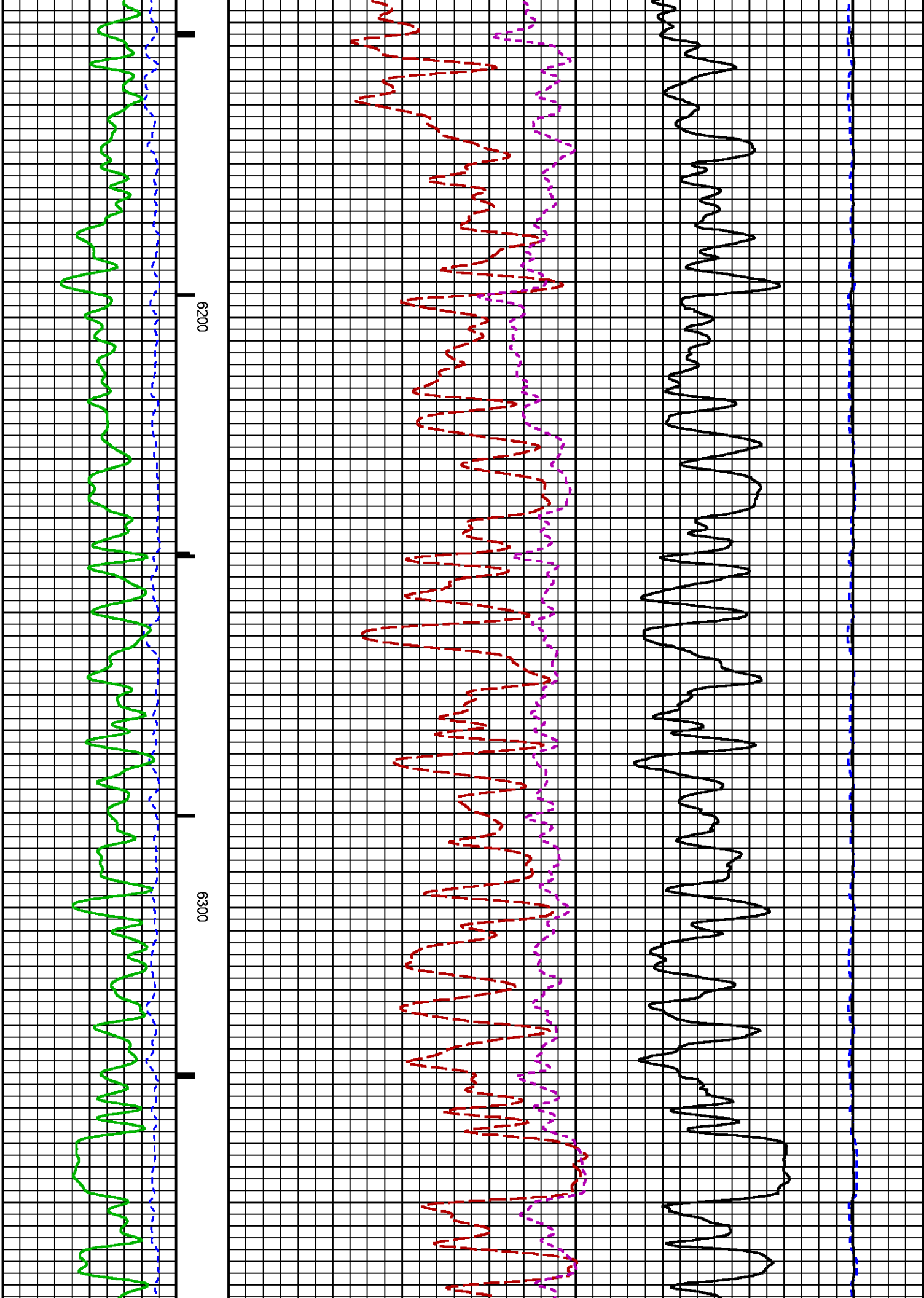


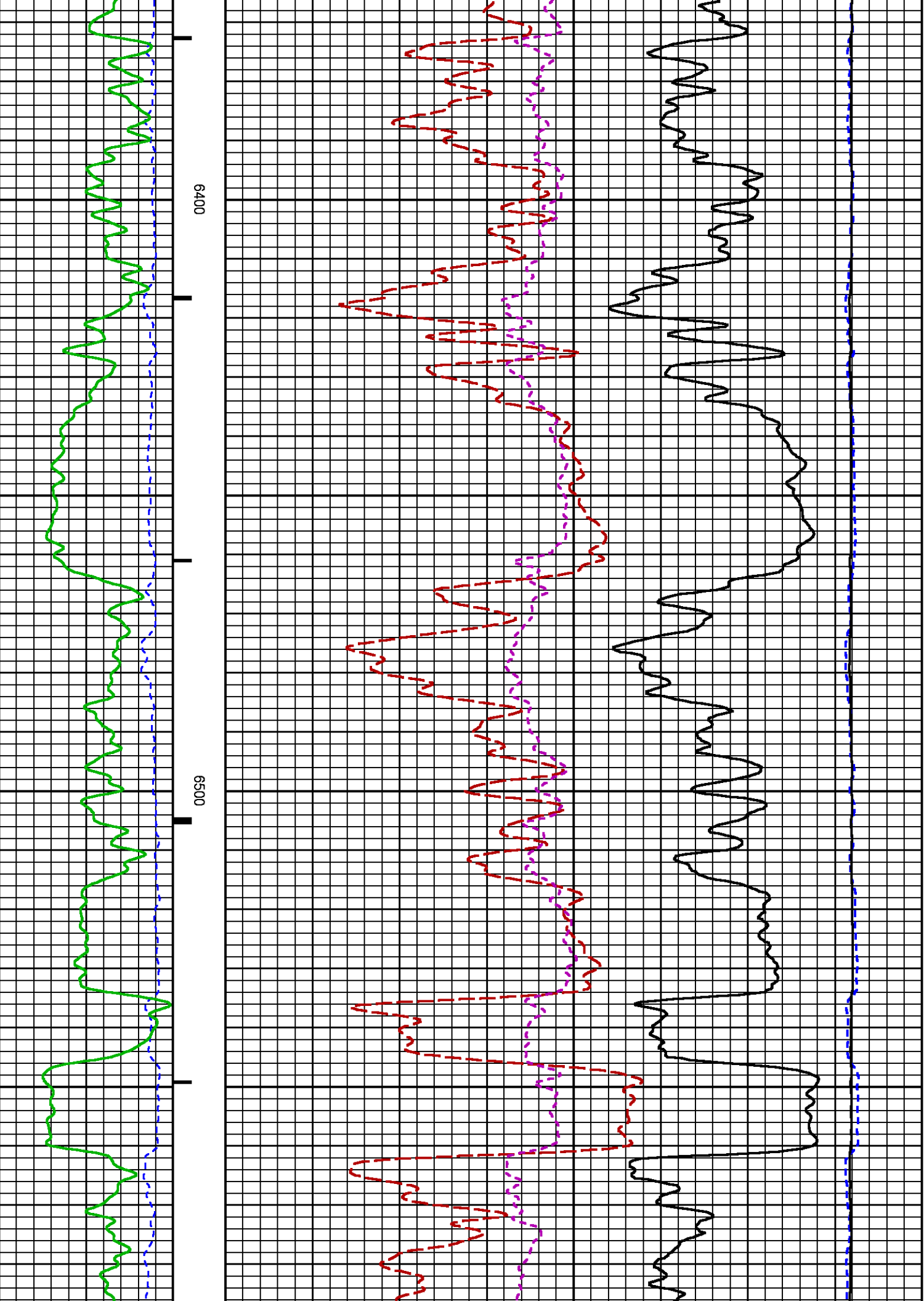


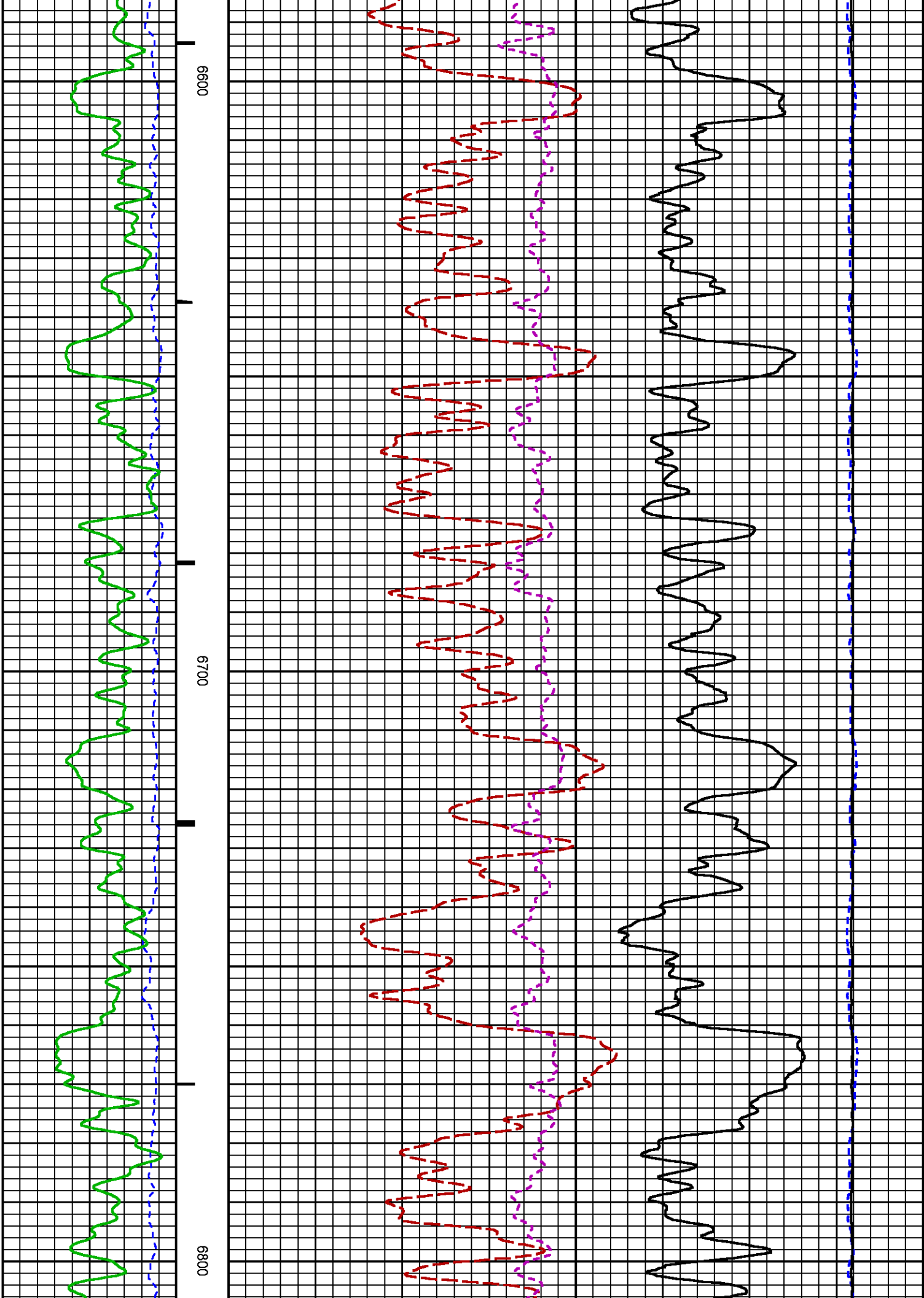


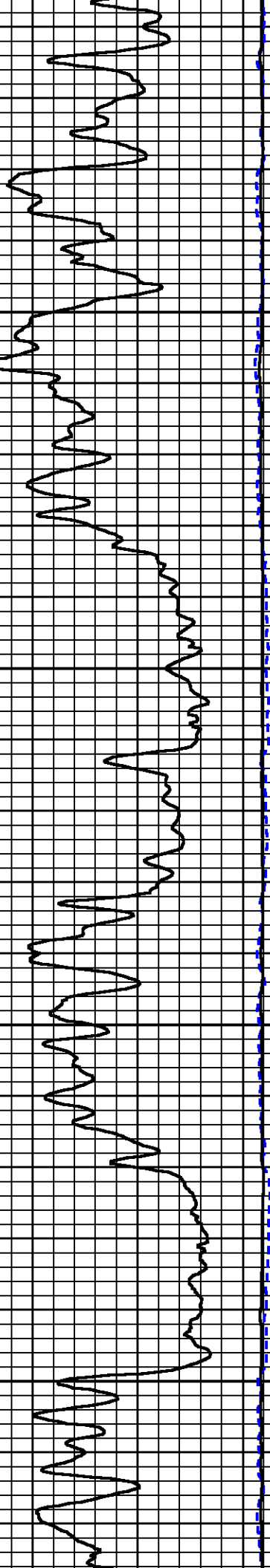
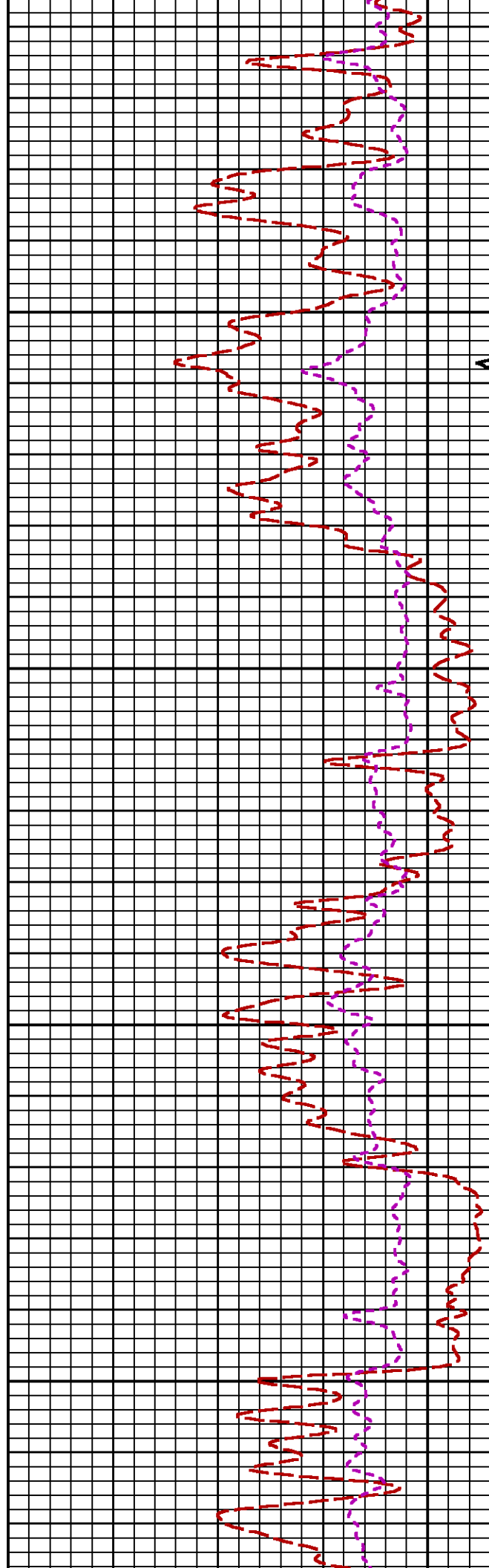
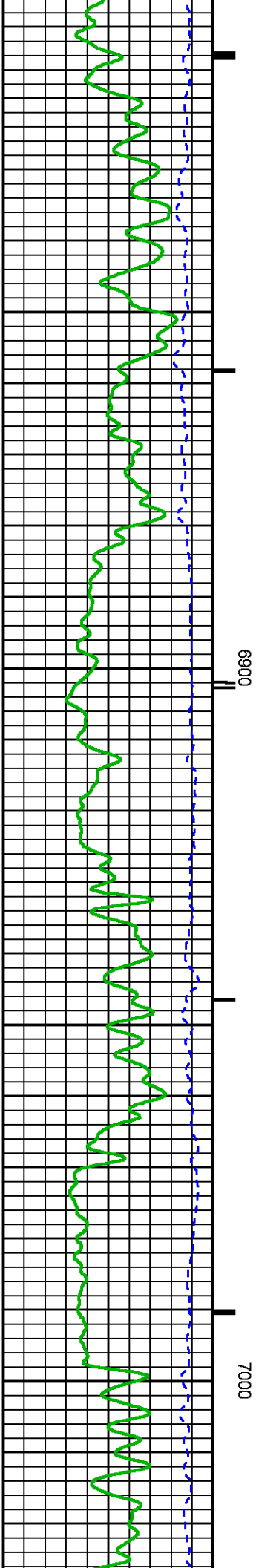


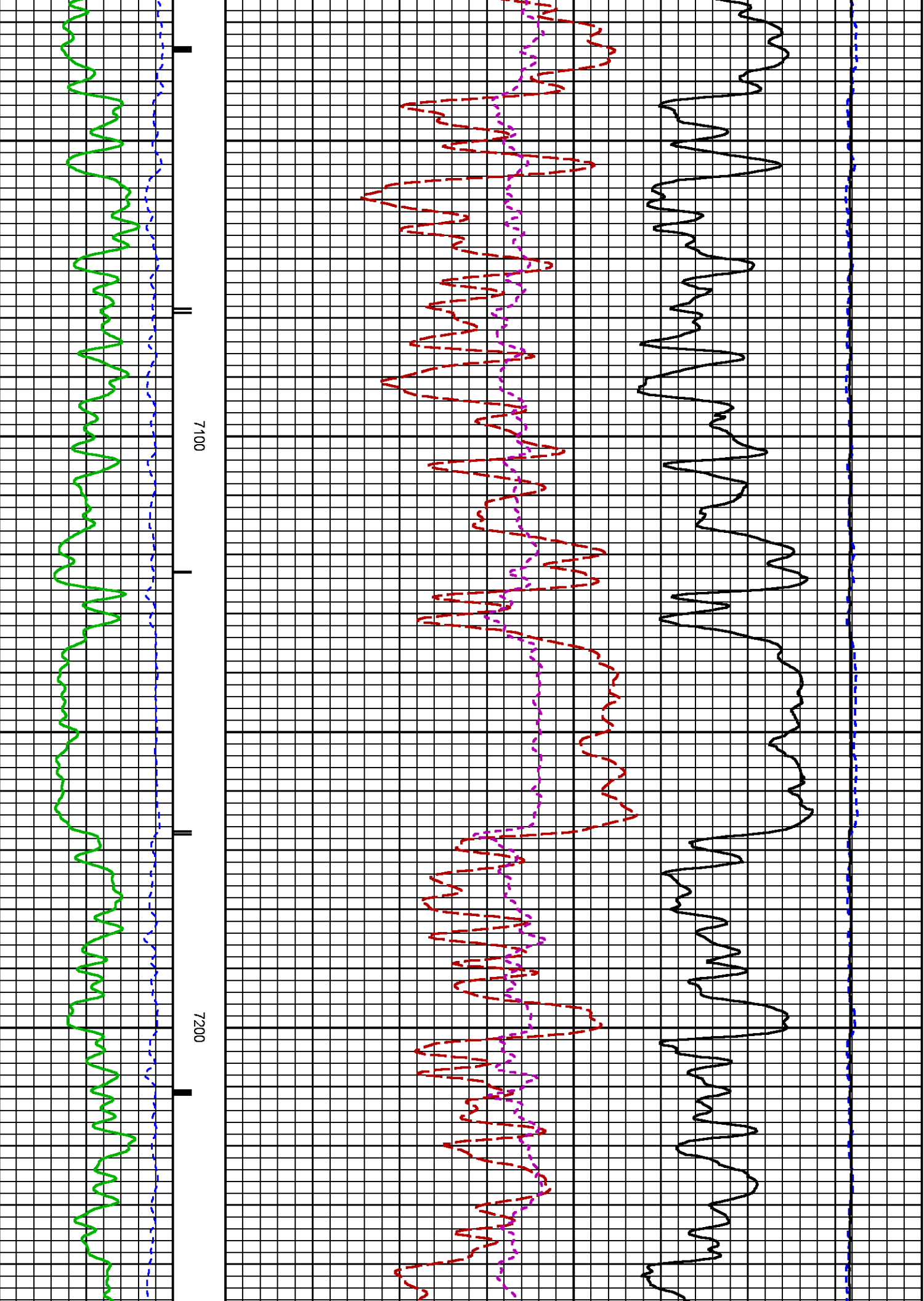


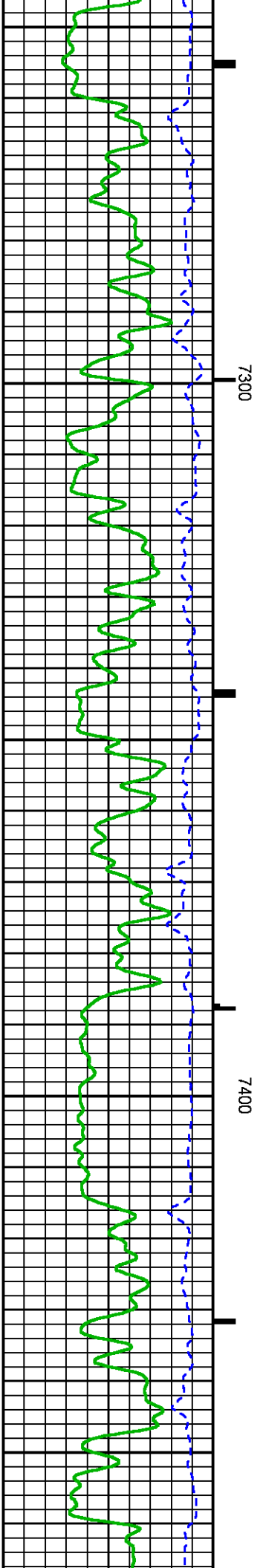
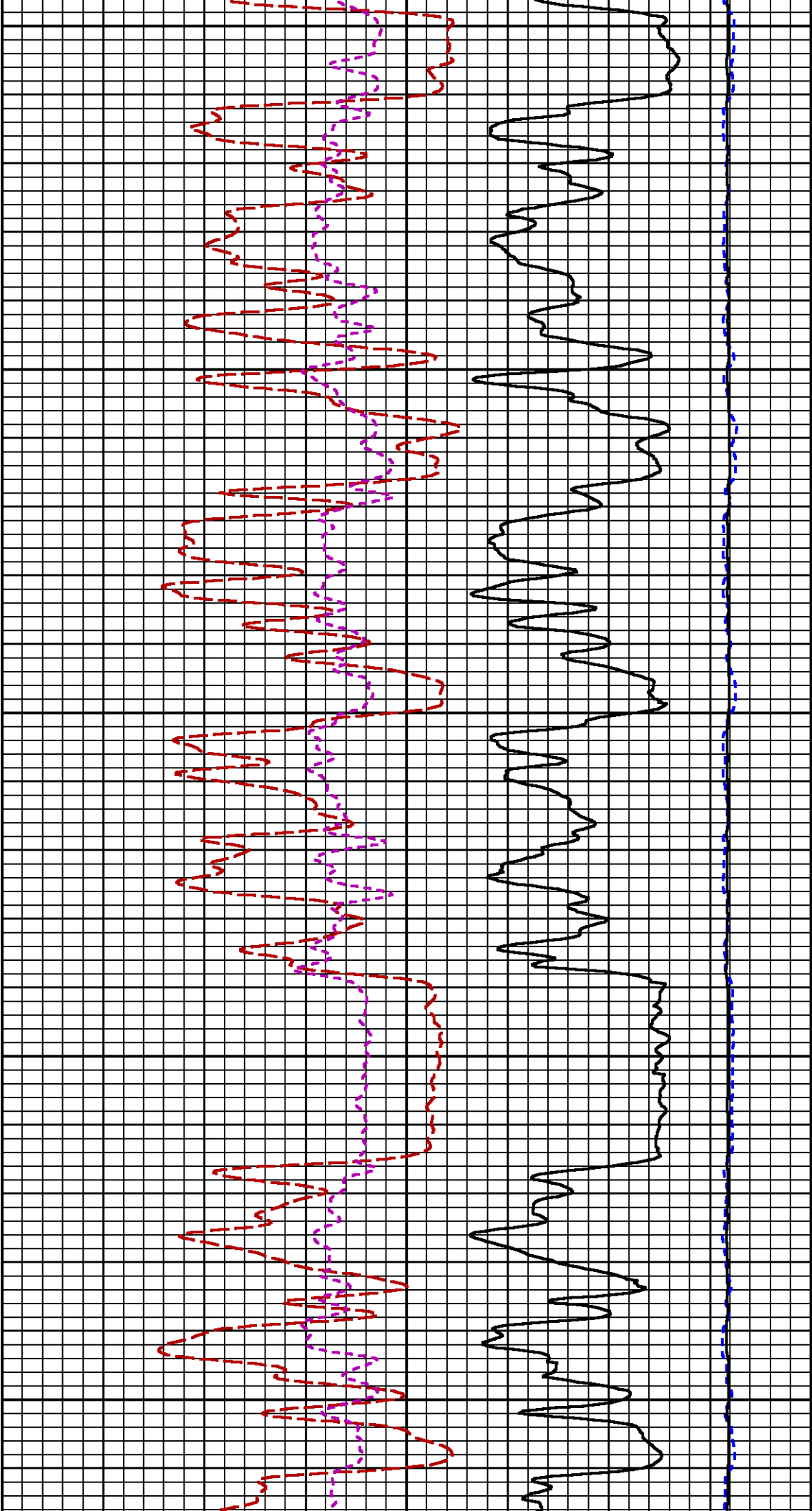


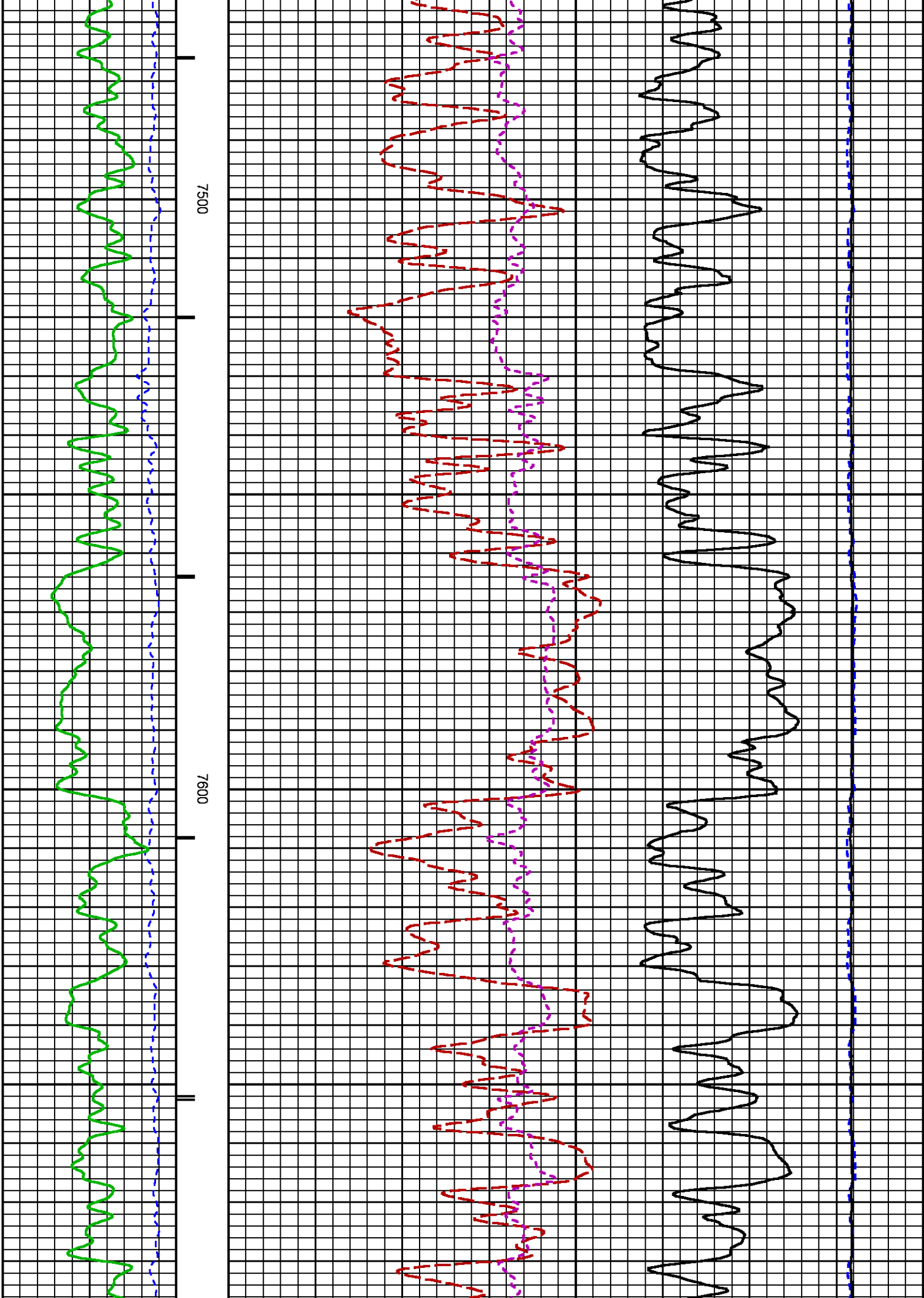




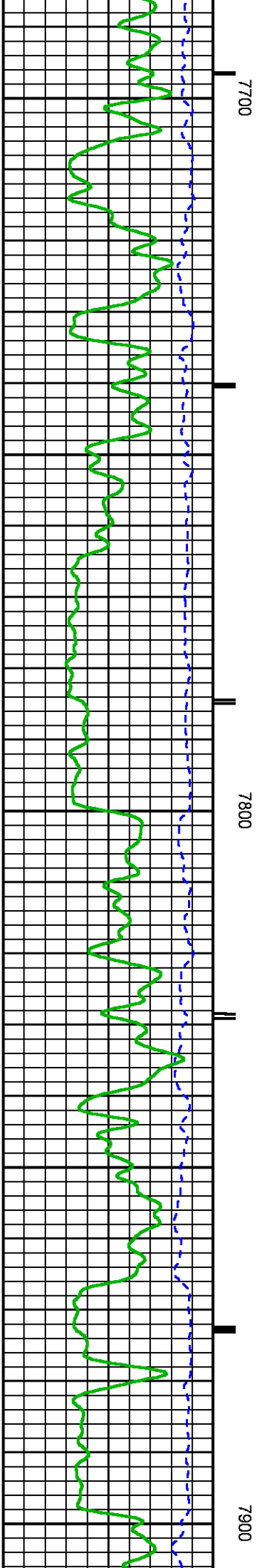
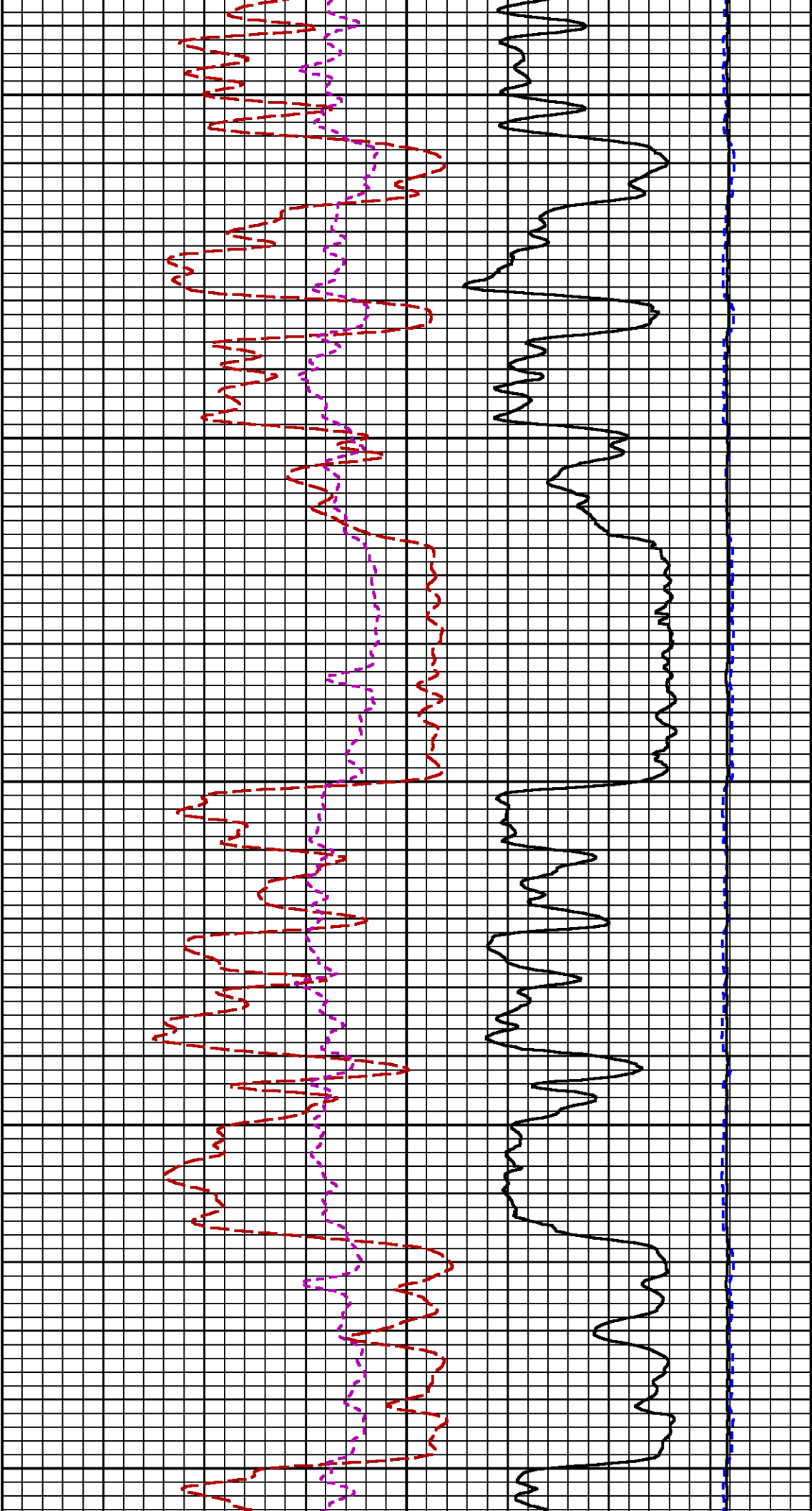


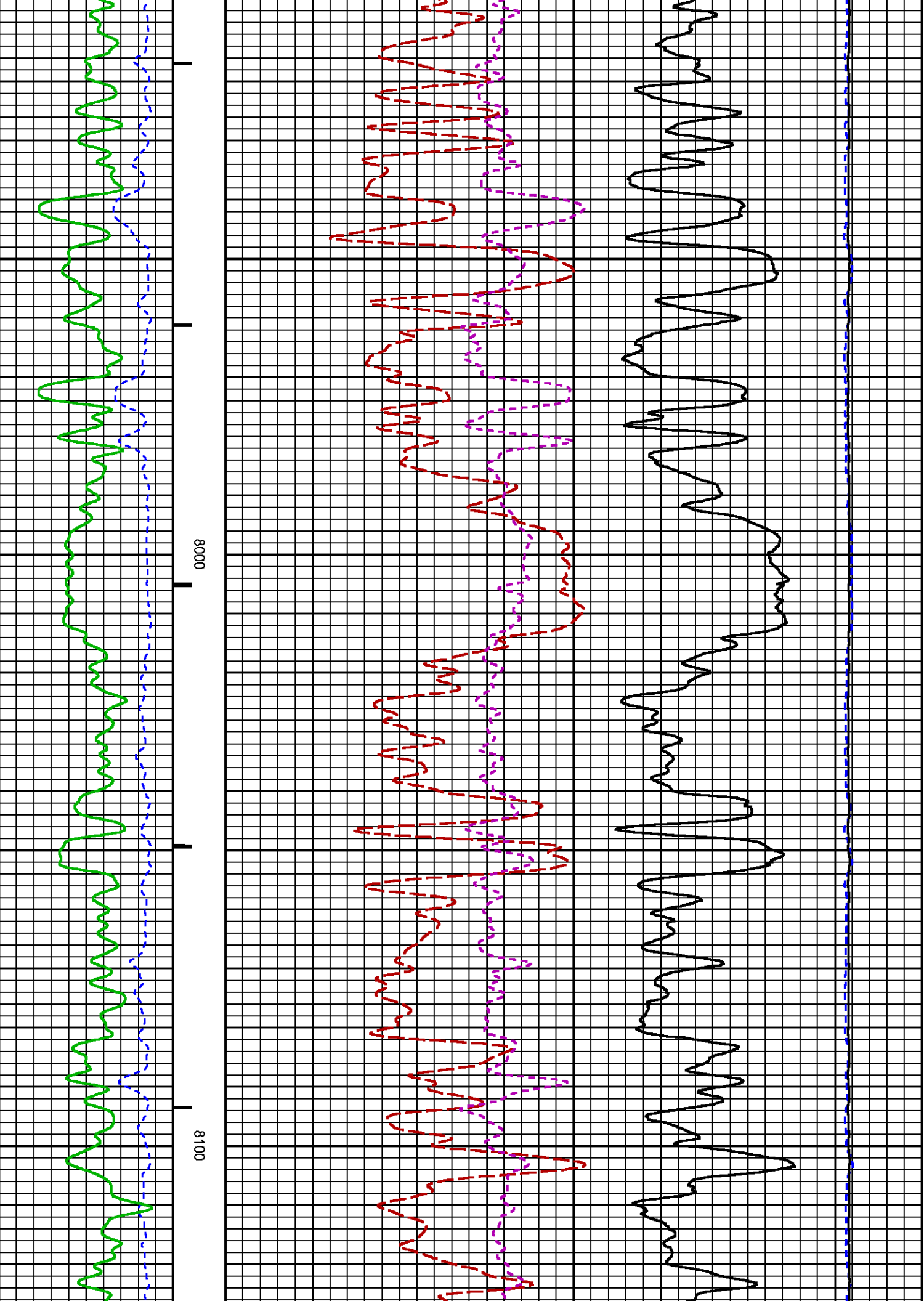


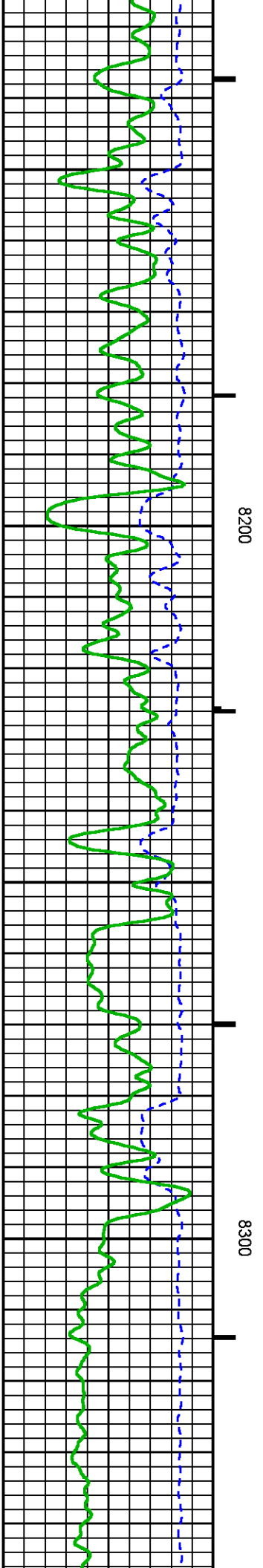
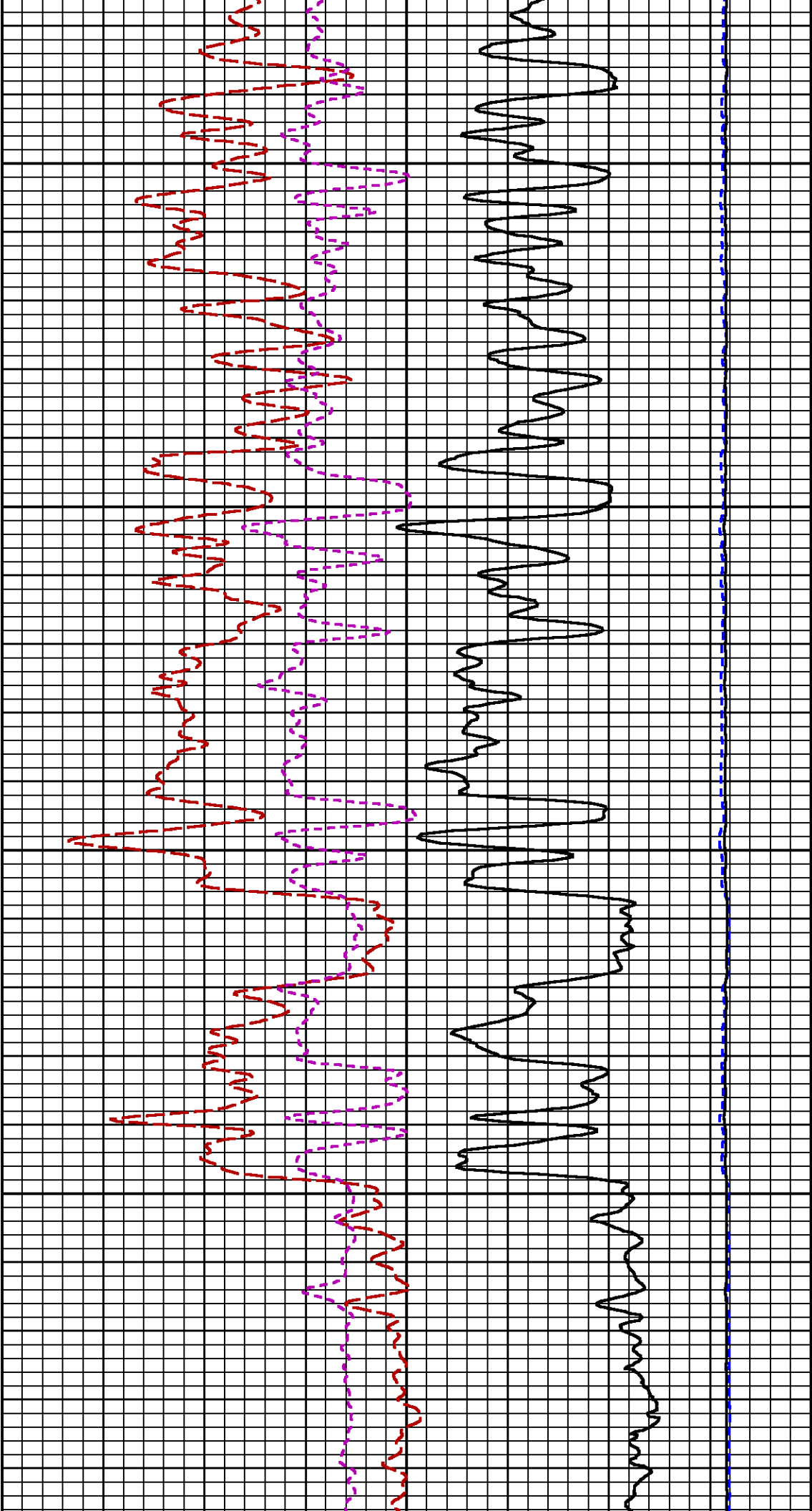


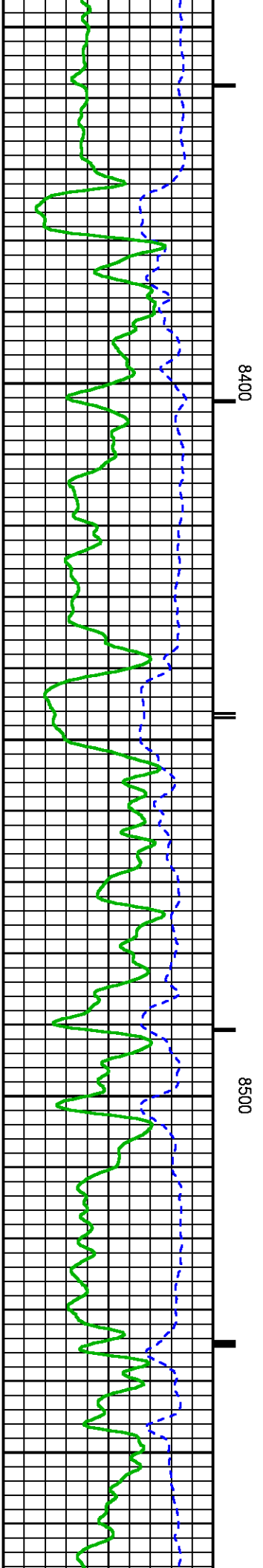
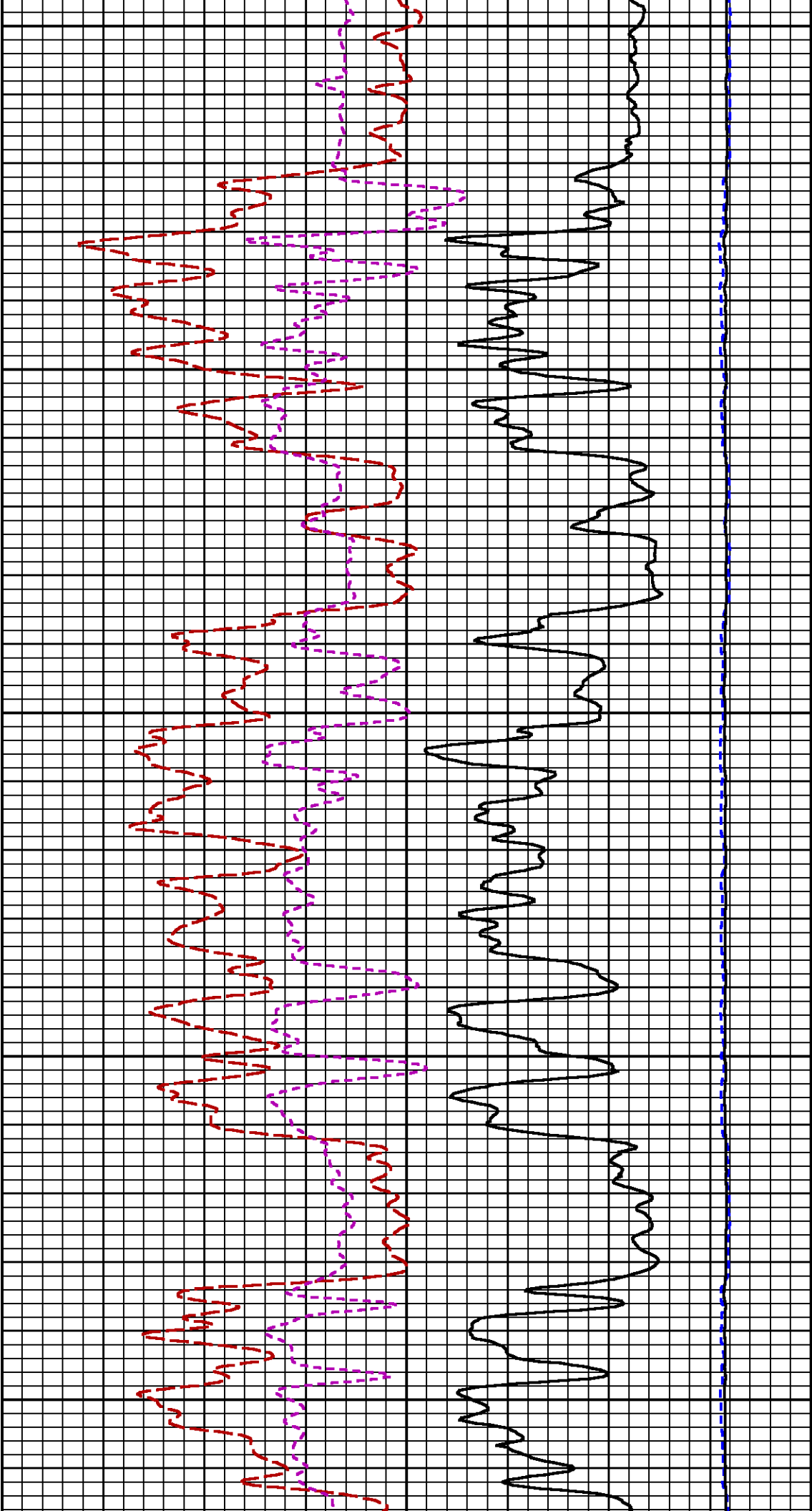


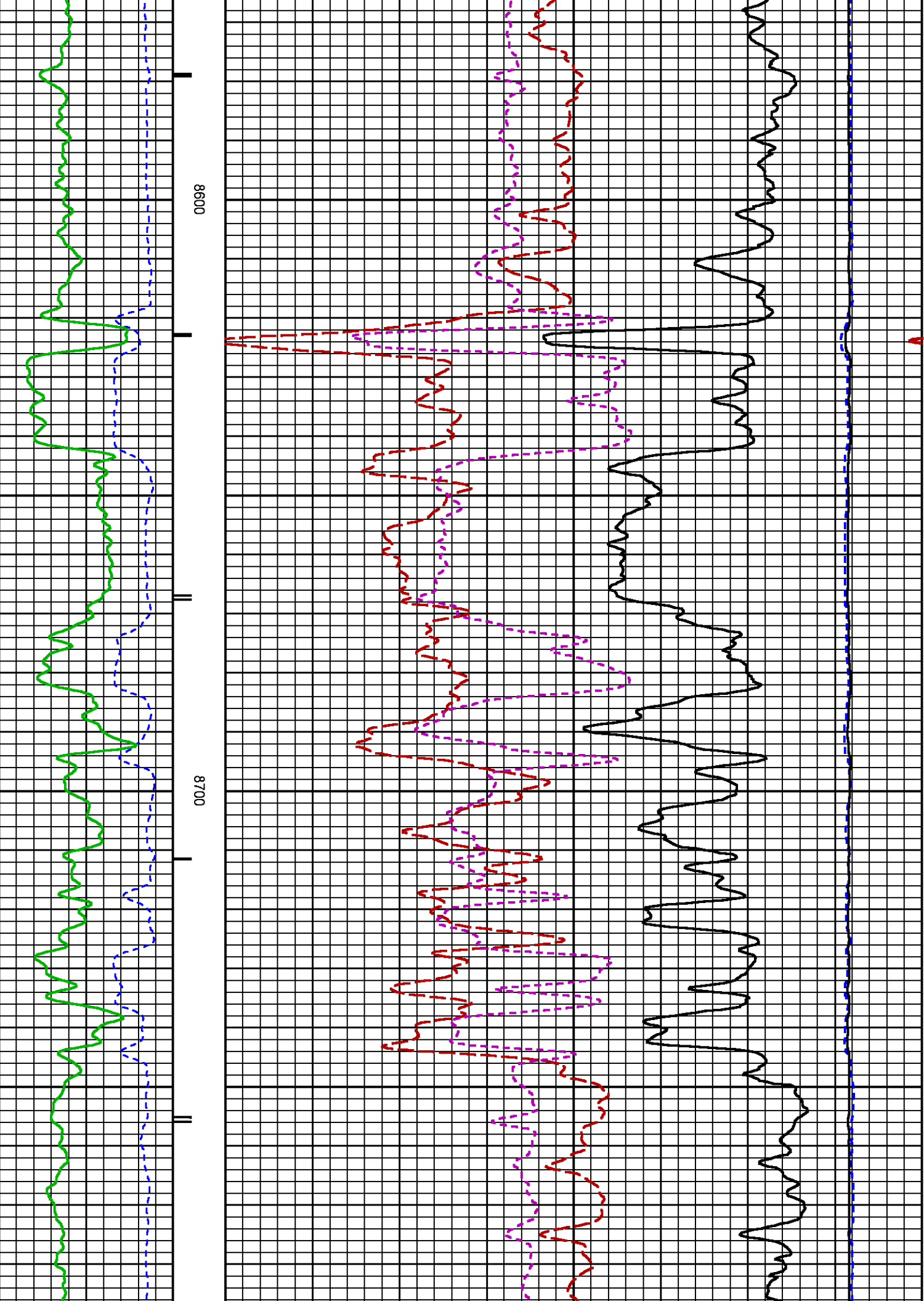


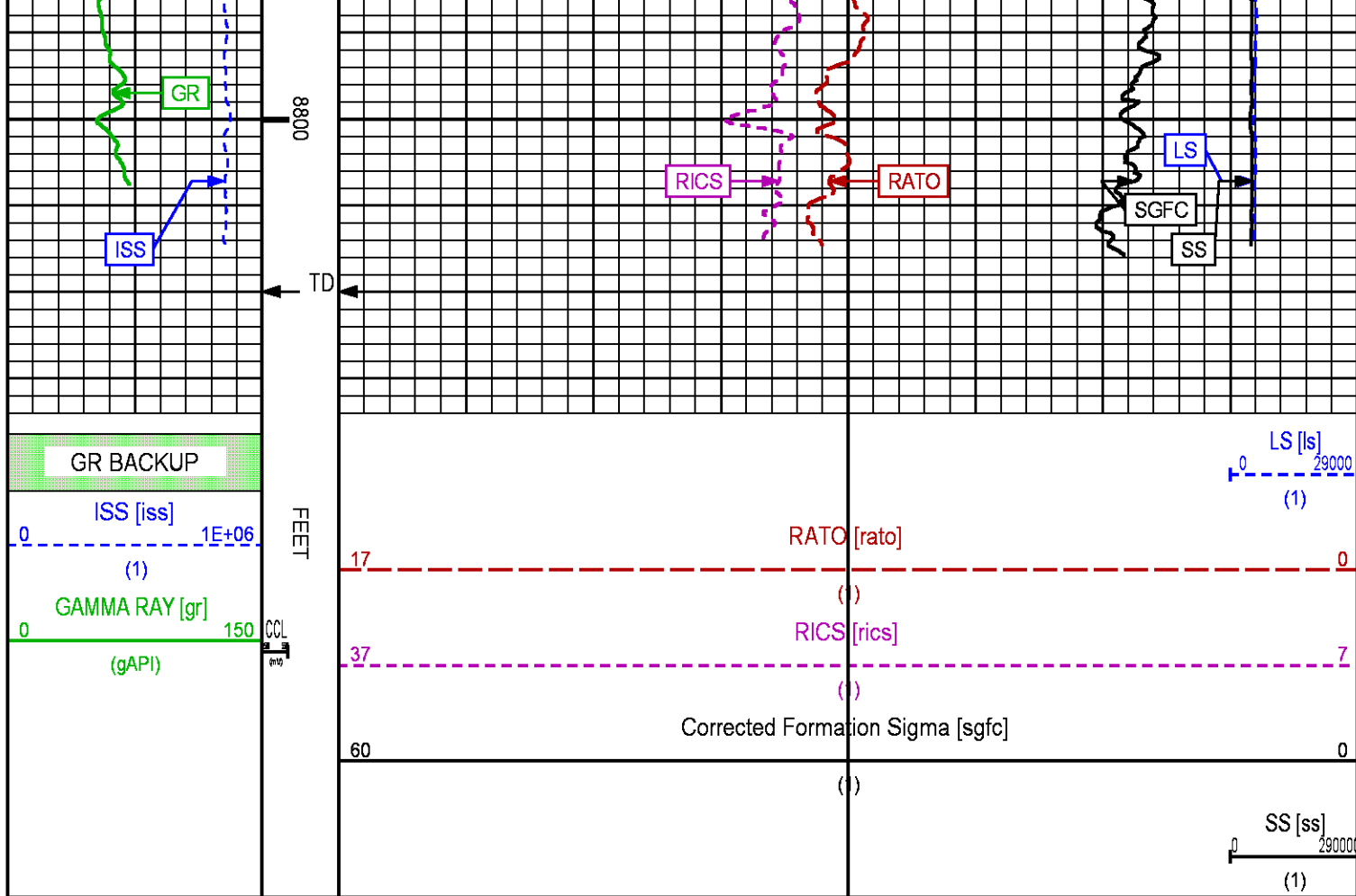












## REPEAT LOG

ECLIPS 6.2i ECLIPS General Release Rel 6.2i Wed Jun 12 12:21:40 CDT 2013

Updates: 1

Plotted: Thu Jul 3 19:14:19 2014

### PARAMETER AND FILTER SUMMARY REPORT

FILE: /dat1a/CH087672/REPEAT01.prm  
 LOGGING MODE: DEPTH DIRECTION: UP  
 TOP DEPTH: 7960.125 ft BOTTOM DEPTH: 8303.750 ft

#### SYMMETRIC FILTER

MEASUREMENT TYPE	PARAMETER	VALUE	UNITS	INTERVAL (ft)
GR	FILTER ( )	medium (1)		TOP BOTTOM

#### RPM PROCESSING

MEASUREMENT TYPE	PARAMETER	VALUE	UNITS	INTERVAL (ft)
PNC Parameters	BOREHOLE CONTENTS	FLUID		TOP BOTTOM
	OPEN/CASED HOLE	CASED HOLE		" "
	BOREHOLE SIZE	8.75	in	" "
	CASING SIZE	4.50	in	" "
	MATRIX	SANDSTONE		" "
	CORRECTION BUFFER	11		" "

# CURVE DESCRIPTION REPORT

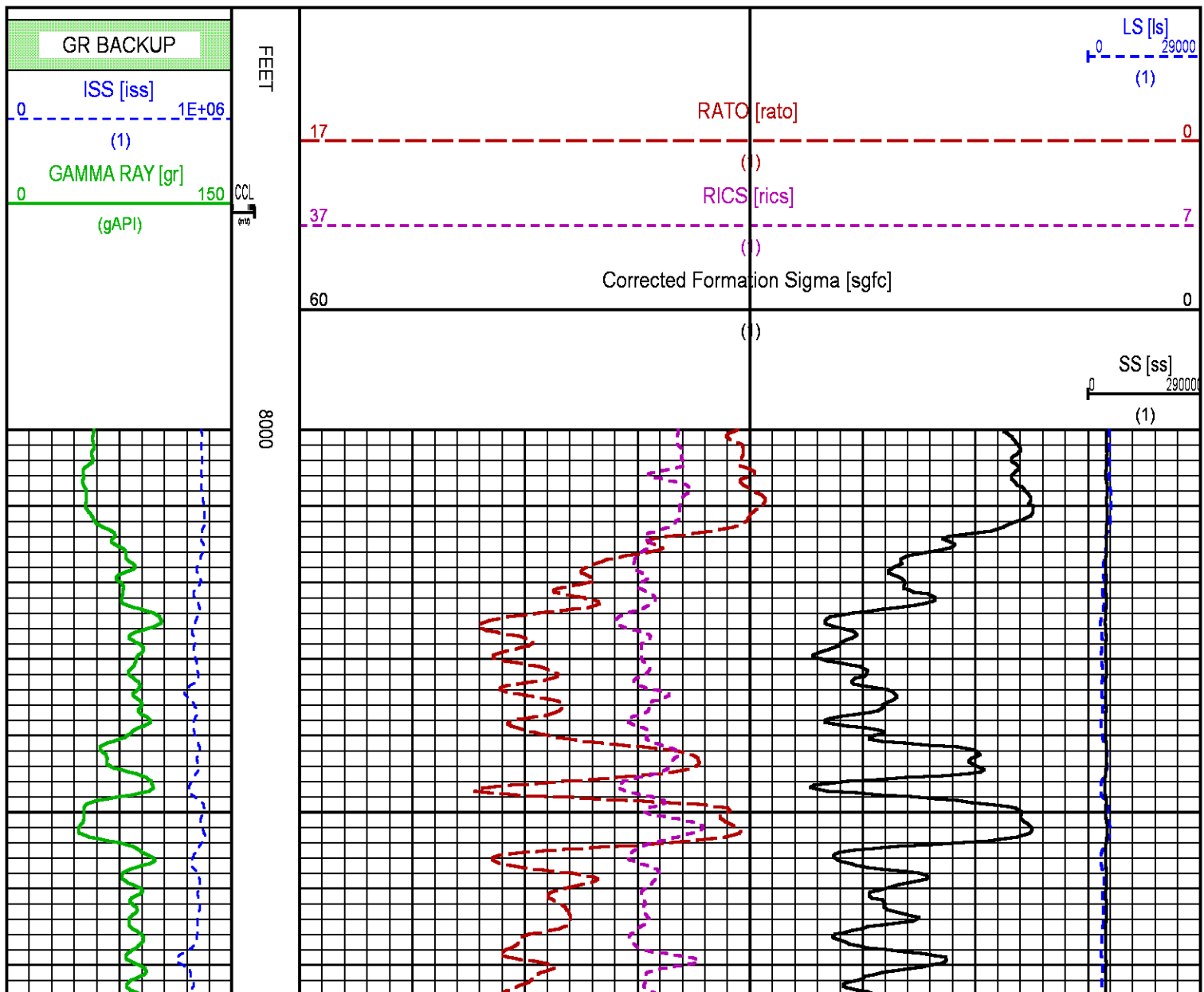
CURVE NAME	CREATION DATE	CURVE DESCRIPTION
F1:CCL	Jul 2 22:17:17 2014	CASING COLLAR LOCATOR
F1:GR	Jul 2 22:17:17 2014	GAMMA RAY
F1:ISS	Jul 2 22:17:17 2014	INELASTIC SHORT SPACE COUNT RATE
F1:LS	Jul 2 22:17:17 2014	LONG SPACE COUNT RATE
F1:RATO	Jul 2 22:17:17 2014	SHORT/LONG SPACE COUNT RATE RATIO
F1:RICS	Jul 2 22:17:17 2014	SHORT SPACE INELASTIC TO CAPTURE COUNT RATE RATIO (ISS/CSS)
F1:SGFC	Jul 2 22:17:17 2014	CORRECTED FORMATION SIGMA
F1:SS	Jul 2 22:17:17 2014	SHORT SPACE COUNT RATE

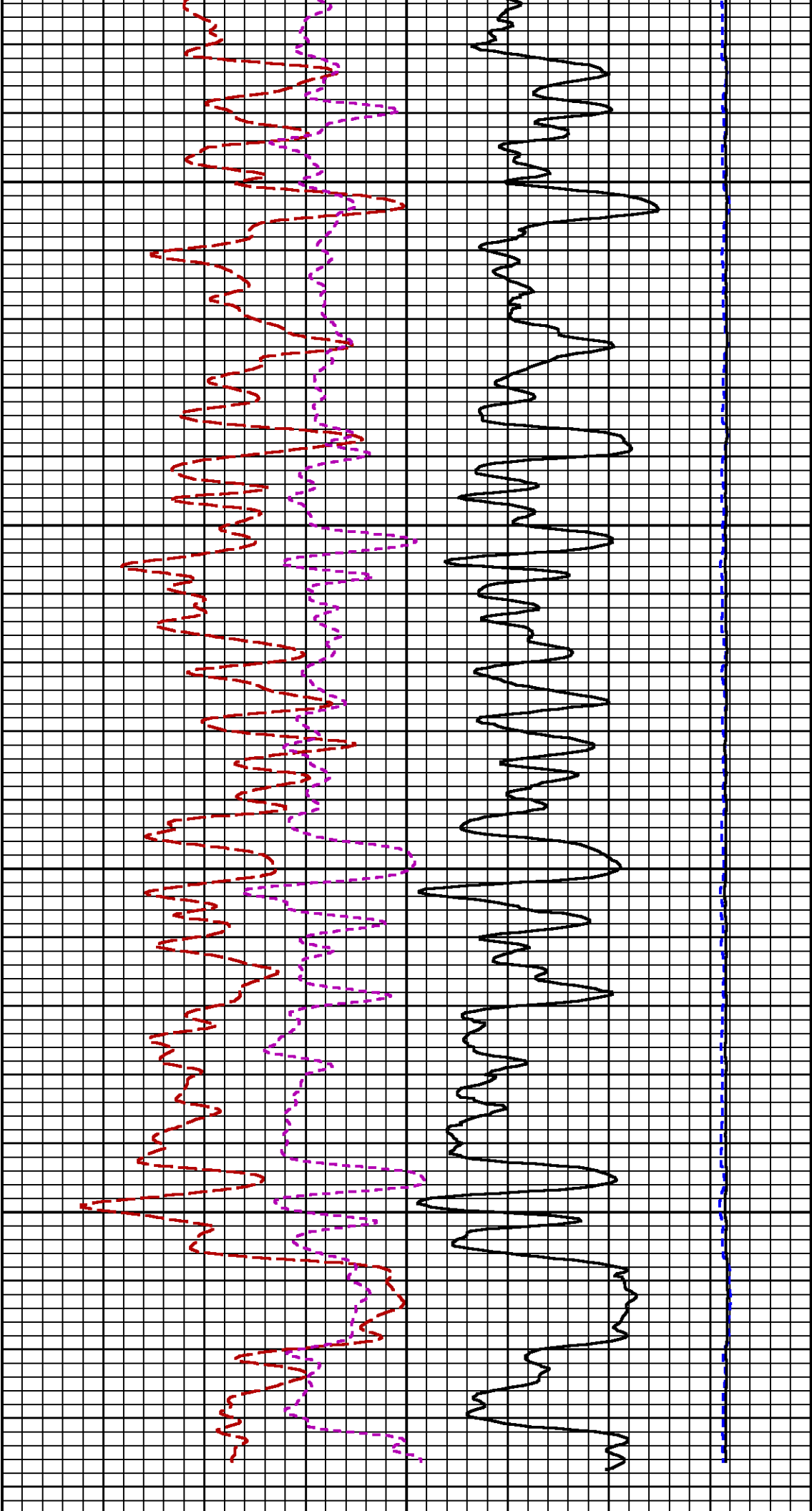
## CURVE MEASURE POINT OFFSET

CURVE	OFFSET (ft)	CURVE	OFFSET (ft)	CURVE	OFFSET (ft)	CURVE	OFFSET (ft)
CCL	26.00	ISS	12.75	RATO	12.75	SGFC	12.75
GR	23.00	LS	12.75	RICS	12.75	SS	12.75

**Presentation** : HL6670:WPX\_rpm\_REPEAT.fvpdf [5"/100' Scale]  
**Plot Interval** : 8000 - 8300 Feet

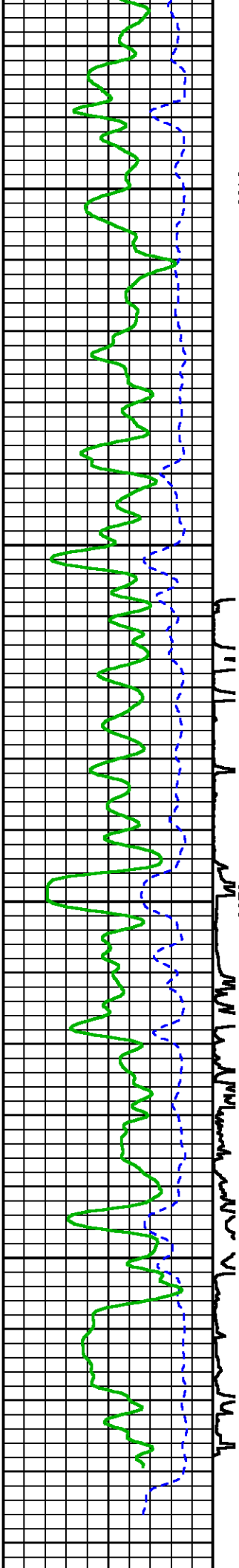
**Data File 1** : F1 : HL6670:/dat1a/CH087672/REPEAT\_RDR.xtf  
**Created On** : Jul 2 22:17:17 2014  
**Company** : WPX ENERGY  
**Well** : SAVAGE RWF 333-25  
**Field** : RULISON  
**File Interval** : 7933.25 - 8302.5 Feet  
**OCT** : n353h



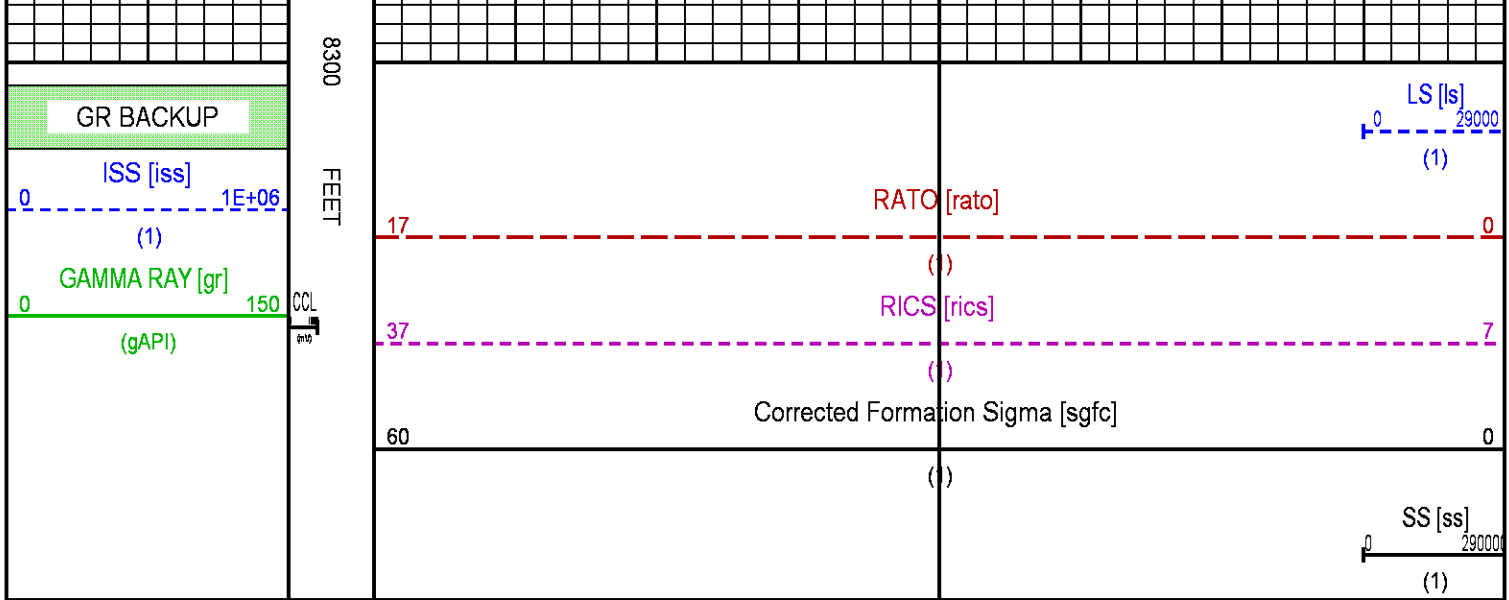


8100

8200







## CALIBRATION / VERIFICATION SUMMARY

Source File: /dat1a/CH087672/n354h.tp1

### GR PRIMARY CALIBRATION SUMMARY

TOOL #: 2812LA 11701636 DATE/TIME PERFORMED: Sat Jun 7 13:49:20 2014  
UNIT #: 3880TA HL6670 CALB JIG #: 4702NK DA-041

	BACKGROUND	CALBRTR ON	CR DIFF	MULT	BACKGROUND	CALBRTR ON	CALBRTR
	(cts/s)	(cts/s)	(cts/s)		(gAPI)	(gAPI)	(gAPI)
GR	64.73	269.38	204.6	1.026	66.43	276.43	210

### GR PRIMARY VERIFICATION SUMMARY

TOOL #: 2812LA 11701636 DATE/TIME PERFORMED: Sat Jun 7 13:51:47 2014  
UNIT #: 3880TA HL6670 VERI JIG #: 4702NK DA-041

	BACKGROUND	CALBRTR ON	MULT	BACKGROUND	CALBRTR ON	DIFF.
	(cts/s)	(cts/s)		(gAPI)	(gAPI)	(gAPI)
GR	62.22	269.36	1.026	63.85	276.40	212.55
						200.00 220.00

### GR BEFORE LOG VERIFICATION SUMMARY

NOT DONE

### GR AFTER LOG VERIFICATION SUMMARY

NOT DONE

### RPM\_PNC\_3D PRIMARY CALIBRATION SUMMARY

TOOL: 8283PA 10585555 DATE/TIME PERFORMED: Sun Jun 8 11:45:12 2014  
UNIT: 3880TA HL6670 CALIBRATOR: 2437XB 112674 SOURCE: 8281AA 11765054 HOURS: 8281AA 464

	ISS	Mtr Vlt	SS Gain	LS Gain	XLS Gain	EA Temp	Sync Delay	RCAL
		(V)				(degF)	(usec)	
Raw Data	802244	121	2328	2286	2402	97	7	0.9782

Raw Data	802244	121	2020	2200	2102	07	0.0102								
Interpolated	1300000	141	2306	2284	2397										
	ISS	BKS	BKL	BKX	SGA1	SDA1	SGA2	SDA2							
Raw Data	802244	6514	1037	163	25.93	0.15	24.13	0.33							
					25.35	26.40	0.00	0.20	23.60	24.80	0.00	0.40			
	ISS	ILS	IXS	SS	SS2	LS	CSS	CLS							
Raw Data	802244	163358	27238	86314	30781	8033	52302	12825							
Fit Quality %		0.990	0.805	0.872	0.898	0.915	0.852	0.962							
	ISS	RBOR	RIN	RIN13	RICS	RATO	RTWO	RONE							
			ISS/ILS	ISS/IXS	ISS/CSS	SS/LS	SS2/LS	CSS/CLS							
Raw Data	802244	1.44	4.91	29.47	15.34	10.75	3.83	4.08							
		1.42	1.45	3.55	5.52	22.20	32.70	10.99	16.34	10.06	11.10	3.57	3.95	3.76	4.22
Fit Quality %		0.031	0.178	0.221	0.110	0.014	0.013	0.056							
Reduced	1405263	1.44	4.90	29.39	15.32	10.75	3.83	4.08							
		1.42	1.45	4.33	5.52	27.60	32.70	13.70	16.34	10.06	11.10	3.57	3.95	3.76	4.22

## TPSETEMP PRIMARY CALIBRATION SUMMARY

TOOL #: 8255XA 11774568

DATE/TIME PERFORMED: Wed May 14 12:39:45 2014

UNIT #: 3880TA HL6670

	T(0)	T(1)	T(2)	T(3)
Corr Coeff for Temp	-9.274653E+00	1.055639E-01	2.143764E-06	-2.782846E-10

## INSTRUMENT CONFIGURATION

Source File: /dat1a/CH087672/n353h~please-tdg

A3 CABLEHEAD  
Diameter : 1.37"

PCM POWER SUPPLY  
Diameter : 1.70"  
Length : 3.86'  
Weight : 18 lbs  
Series : 8250EA  
Mnemonic : PCM

TELEMETRY / CCL  
Diameter : 1.70"  
Length : 4.46'  
Weight : 20 lbs  
Series : 8248ED  
Mnemonic : PCM  
Measure Point: 1.00': CCL MP

34.08'

GAMMA RAY

Diameter : 1.70"  
Length : 3.02'  
Weight : 15 lbs  
Series : 8262XA  
Mnemonic : GR  
Measure Point: 0.89': GR MP

CCL MP 26.03'

GR MP 22.90'

RPM ELECTRONICS

Diameter : 1.70"  
Length : 4.48'  
Weight : 16 lbs  
Series : 8281EA  
Mnemonic : RPM

RPM C DETECTOR SECTION

Diameter : 1.70"  
Length : 9.40'  
Weight : 41 lbs  
Series : 8283PA  
Mnemonic : RPM  
Measure Point: 5.45': XLS DETECTOR  
Measure Point: 5.04': LS DETECTOR  
Measure Point: 4.79': SS DETECTOR

XLS DETECTOR 13.58'  
LS DETECTOR 13.16'  
SS DETECTOR 12.91'

RPM SOURCE SECTION

Diameter : 1.70"  
Length : 4.70'  
Weight : 18 lbs  
Series : 8281FA  
Mnemonic : RPM

TEMPERATURE / PRESSURE


Diameter : 1.70"  
Length : 3.30'  
Weight : 13 lbs  
Series : 8255XA  
Mnemonic : SRPL  
Measure Point: 1.52': TEMP MP

TEMP MP 1.65'  
PRES MP

BULL PLUG 1 11/16

0.00'

TOTAL LENGTH: 34.08'  
TOTAL WEIGHT: 144 lbs

	COMPANY	<u>WPX ENERGY</u>		FILE NO:				
	WELL	<u>SAVAGE RWF 333-25</u>			<u>CH087672</u>			
	FIELD	<u>RULISON</u>		API NO:				
	COUNTY	<u>GARFIELD</u>	STATE	<u>CO</u>	<u>05045220040000</u>			
	LOCATION:		ELEVATIONS:					
	SHL: 1184' FSL 1392' FEL BHL: 2120' FSL 1764' FEL		KB 6260 FT DF GL 6234 FT		S25 T6S R94W PAD: 43-25 RIG: NABORS 577			
	SEC	<u>25</u>	TWP	<u>6S</u>	RGE	<u>94W</u>	DATE	<u>02-Jul-2014</u>

