



FILE NO: CH087281	COMPANY WPX ENERGY INC
API NO: 05045219920000	WELL Savage RWF 43-25
	FIELD RULISON
	COUNTY GARFIELD
	STATE CO
Ver. 3.87 S25 T6S R94W PAD: RWF 43-25 NABORS 577	LOCATION: SHL: 1192' FSL 1382' FEL BHL: 2483' FSL 627' FEL SEC 25 TWP 6S RGE 94W
PERMANENT DATUM LOG MEASURED FROM DRILL. MEAS. FROM	OTHER SERVICES RPM ELEVATIONS: KB 6260 FT DF GL 6234 FT

DATE	28-Jun-2014
RUN	1
TRIP	1
SERVICE ORDER	US087281
DEPTH DRILLER	9032 FT
DEPTH LOGGER	9017 FT
BOTTOM LOGGED INTERVAL	9007 FT
TOP LOGGED INTERVAL	4742 FT
TIME STARTED	11:00
TIME FINISHED	1900
OPERATOR RIG TIME	3.5
TYPE OF FLUID IN HOLE	WATER
FLUID DENSITY	NA
FLUID SALINITY	NA
FLUID LEVEL	86 FT
LOGGED CEMENT TOP	NA
WELLHEAD PRESSURE	0 PSI
MAXIMUM HOLE DEVIATION	NA
NOMINAL LOGGING SPEED	10 FMN
MAX. RECORDED TEMP.	218 DEGF
REFERENCE LOG	NA
REFERENCE LOG DATE	NA
EQUIP. NO.	6670
LOCATION	GRAND JCT
RECORDED BY	D SMITH
WITNESSED BY	C APPLGATE

IN MAKING INTERPRETATIONS OF LOGS OUR EMPLOYEES WILL GIVE THE CUSTOMER THE BENEFIT OF THEIR BEST JUDGEMENT. BUT SINCE ALL INTERPRETATIONS ARE OPINIONS BASED ON INFERENCES FROM ELECTRICAL OR OTHER MEASUREMENTS, WE CANNOT, AND WE DO NOT GUARANTEE THE ACCURACY OR CORRECTNESS OF ANY INTERPRETATION. WE SHALL NOT BE LIABLE OR RESPONSIBLE FOR ANY LOSS, COST, DAMAGES, OR EXPENSES WHATSOEVER INCURRED OR SUSTAINED BY THE CUSTOMER RESULTING FROM ANY INTERPRETATION MADE BY ANY OF OUR EMPLOYEES.

BOREHOLE RECORD		
BIT SIZE	FROM	TO
13.5 IN	0 FT	1130 FT
8.75 IN	1130 FT	9040 FT

CASING RECORD				
SIZE	WEIGHT	GRADE	FROM	TO
9.625 IN	32.2 LB/F		0 FT	1130 FT
4.5 IN	11.6 LB/F		1130 FT	9040 FT

REMARKS

RUN 1 TRIP 1: ALL DATA ON THIS LOG IS SHIFTED USING THE CCL CURVE TO PLACE THE WELLHEAD (TOP CCL MARK) ON DEPTH WITH GROUND LEVEL ELEVATION AT CLIENT'S REQUEST

THE DEPTH MATCHING PROCESS CREATES POTENTIAL FOR COLLAR LENGTHS TO VARY FROM THOSE RECORDED ON OTHER CASED HOLE WIRELINE UNITS WITHOUT GAMMA RAY REFERENCE

AMOUNT LINEAR SHIFT +10.0 FT

TOP OF WELL HEAD AT GROUND LEVEL

LOGGED WITH 0 PSI AT WELL HEAD

BHT: 218 DEGREES

SJ: 5642' TO 5663'

THANK YOU FOR CHOOSING BAKER HUGHES WIRELINE SERVICES

CREW: SMITH/COATE/OLSON

EQUIPMENT DATA

RUN	TRIP	TOOL	SERIES NO.	SERIAL NO.	POSITION
1	1	ELECTRONICS	8250EA	10314363	FREE
1	1	TELE	8248ED	Z120493	FREE
1	1	GR	2812LA	11701636	FREE
1	1	RPM	8281EA	10273848	FREE
1	1	RPM	8283PA	104662231	FREE
1	1	RPM	8281FA	10307727	FREE
1	1	TEMP	8255XA	Z166341	FREE

MAIN LOG 5"/100FT SCALE

ECLIPS 6.2i ECLIPS General Release Rel 6.2i Wed Jun 12 12:21:40 CDT 2013

Updates: 1

Plotted: Sun Jun 29 08:37:35 2014

PARAMETER AND FILTER SUMMARY REPORT

FILE: /dat1a/CH087281/n354h03.prm
LOGGING MODE: DEPTH DIRECTION: UP
TOP DEPTH: 4779.750 ft BOTTOM DEPTH: 6541.608 ft

SYMMETRIC FILTER

MEASUREMENT TYPE	PARAMETER	VALUE	UNITS	INTERVAL (ft)	
GR	FILTER ()	medium (1)		TOP	BOTTOM

RPM PROCESSING

MEASUREMENT TYPE	PARAMETER	VALUE	UNITS	INTERVAL (ft)	
PNC Parameters	BOREHOLE CONTENTS	FLUID		TOP	BOTTOM
	OPEN/CASED HOLE	CASED HOLE		"	"
	BOREHOLE SIZE	8.75	in	"	"
	CASING SIZE	4.50	in	"	"
	MATRIX	SANDSTONE		"	"
	CORRECTION BUFFER	11		"	"

CURVE DESCRIPTION REPORT

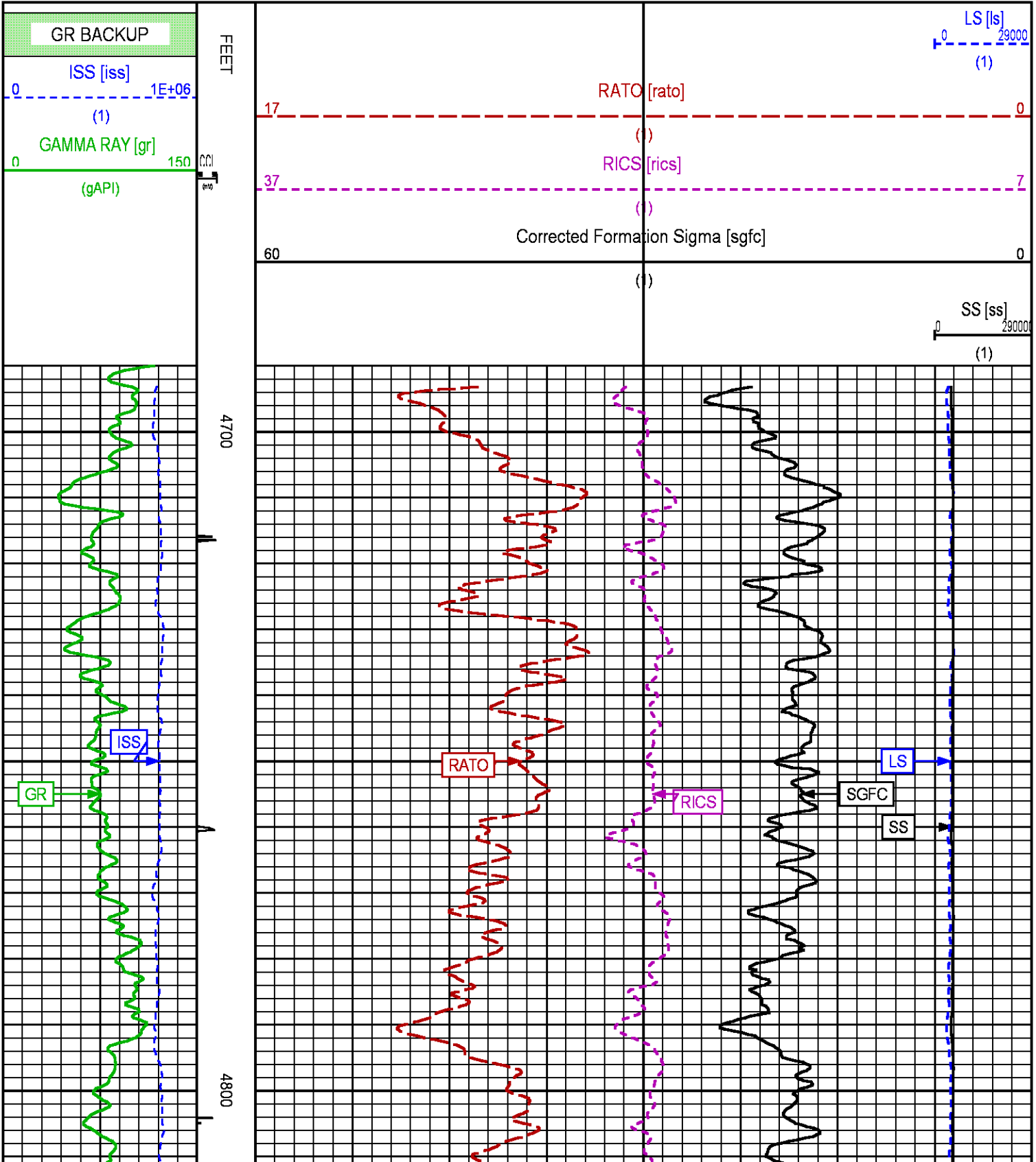
CURVE NAME	CREATION DATE	CURVE DESCRIPTION
F1:CCL	Jun 28 15:55:34 2014	CASING COLLAR LOCATOR
F1:GR	Jun 28 15:55:34 2014	GAMMA RAY
F1:ISS	Jun 28 15:55:34 2014	INELASTIC SHORT SPACE COUNT RATE
F1:LS	Jun 28 15:55:34 2014	LONG SPACE COUNT RATE
F1:RATO	Jun 28 15:55:34 2014	SHORT/LONG SPACE COUNT RATE RATIO
F1:RICS	Jun 28 15:55:34 2014	SHORT SPACE INELASTIC TO CAPTURE COUNT RATE RATIO (ISS/CSS)
F1:SGFC	Jun 28 15:55:34 2014	CORRECTED FORMATION SIGMA
F1:SS	Jun 28 15:55:34 2014	SHORT SPACE COUNT RATE

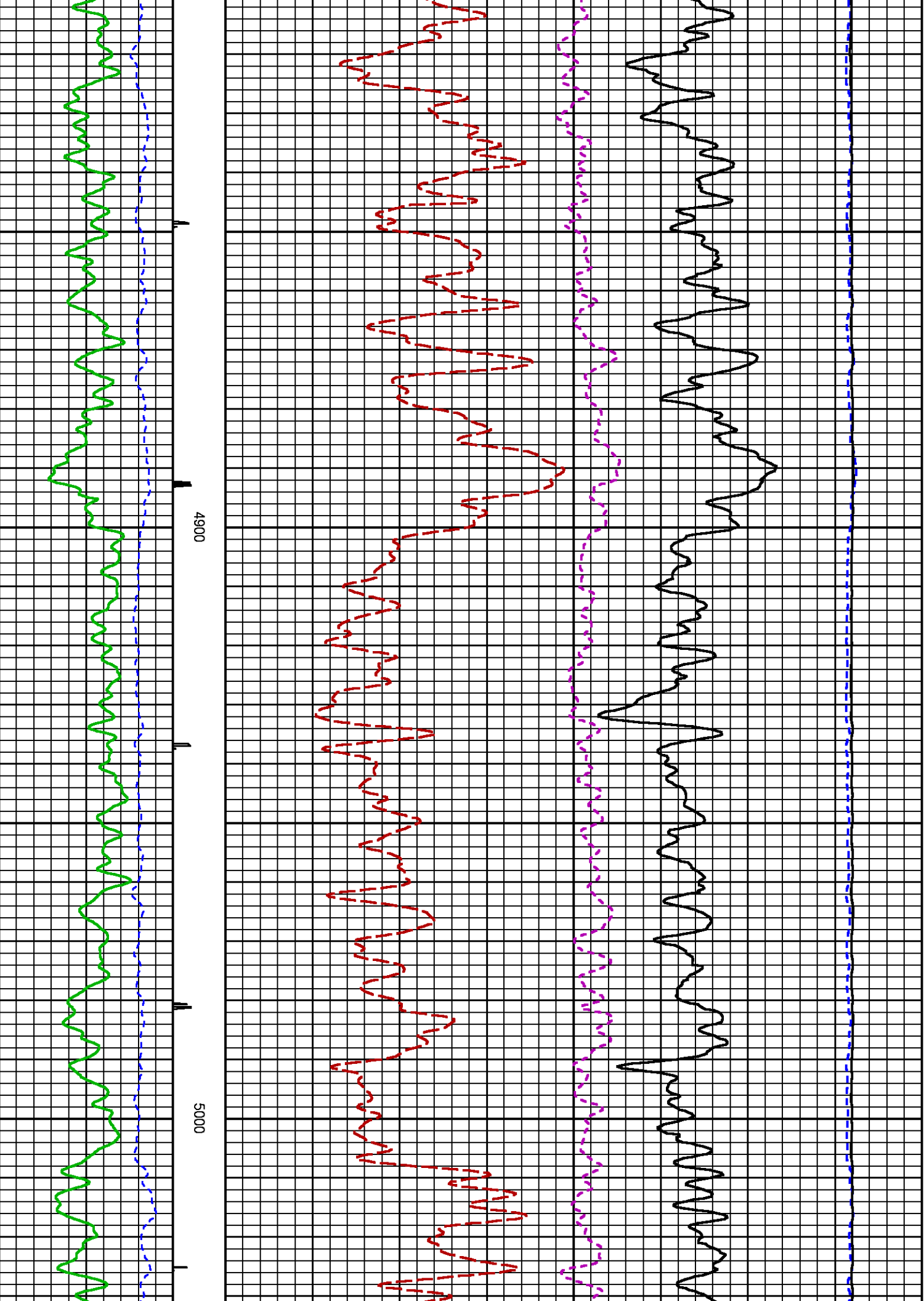
CURVE MEASURE POINT OFFSET

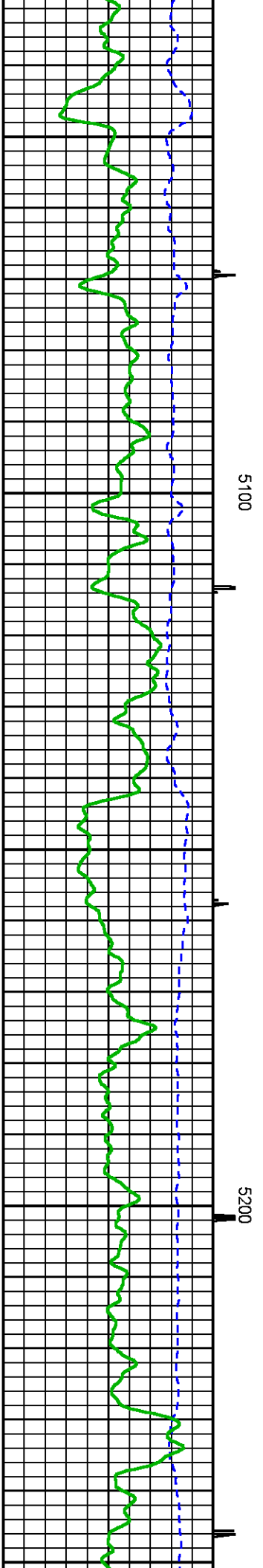
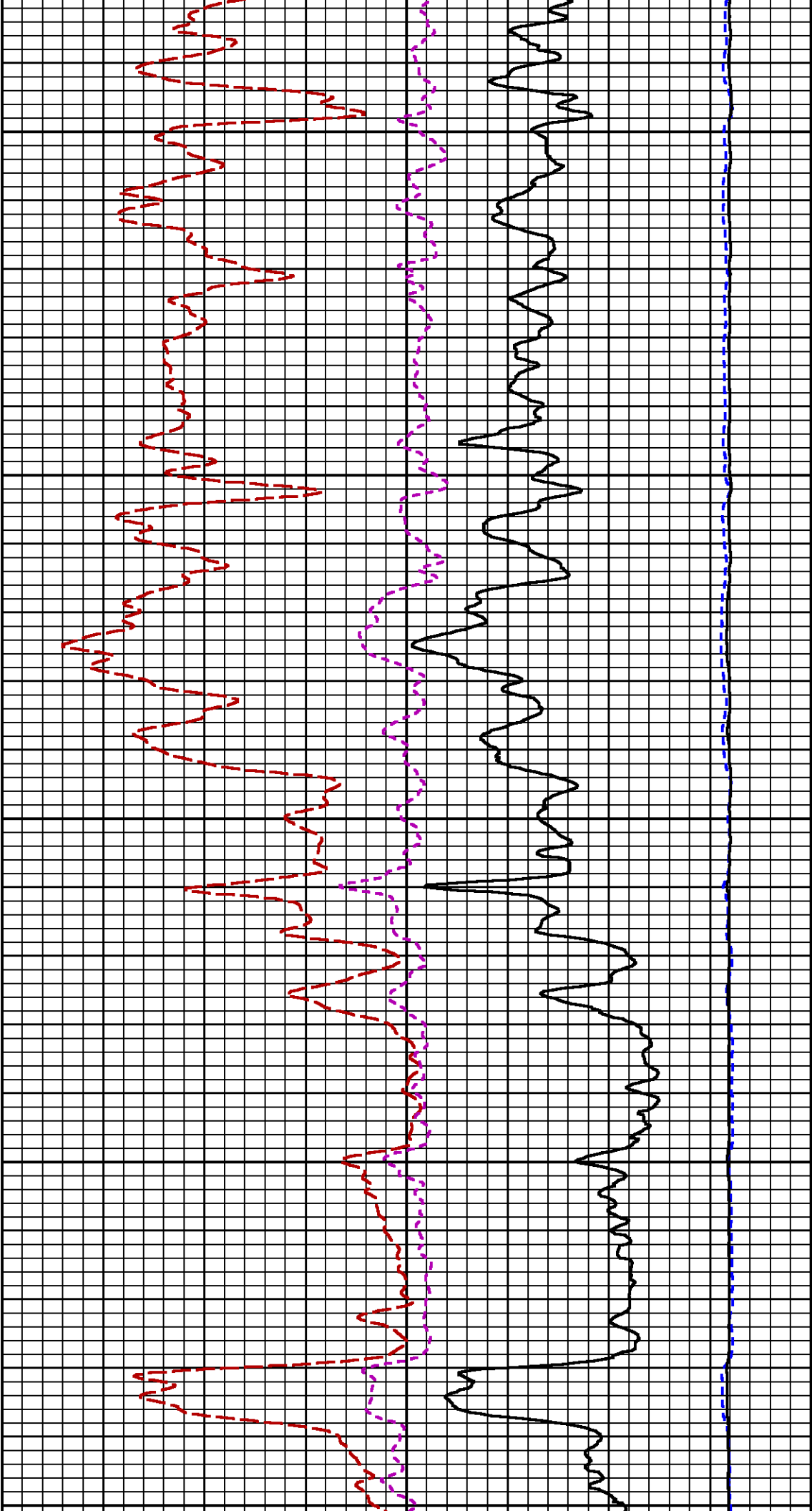
CURVE	OFFSET (ft)	CURVE	OFFSET (ft)	CURVE	OFFSET (ft)	CURVE	OFFSET (ft)
-------	-------------	-------	-------------	-------	-------------	-------	-------------

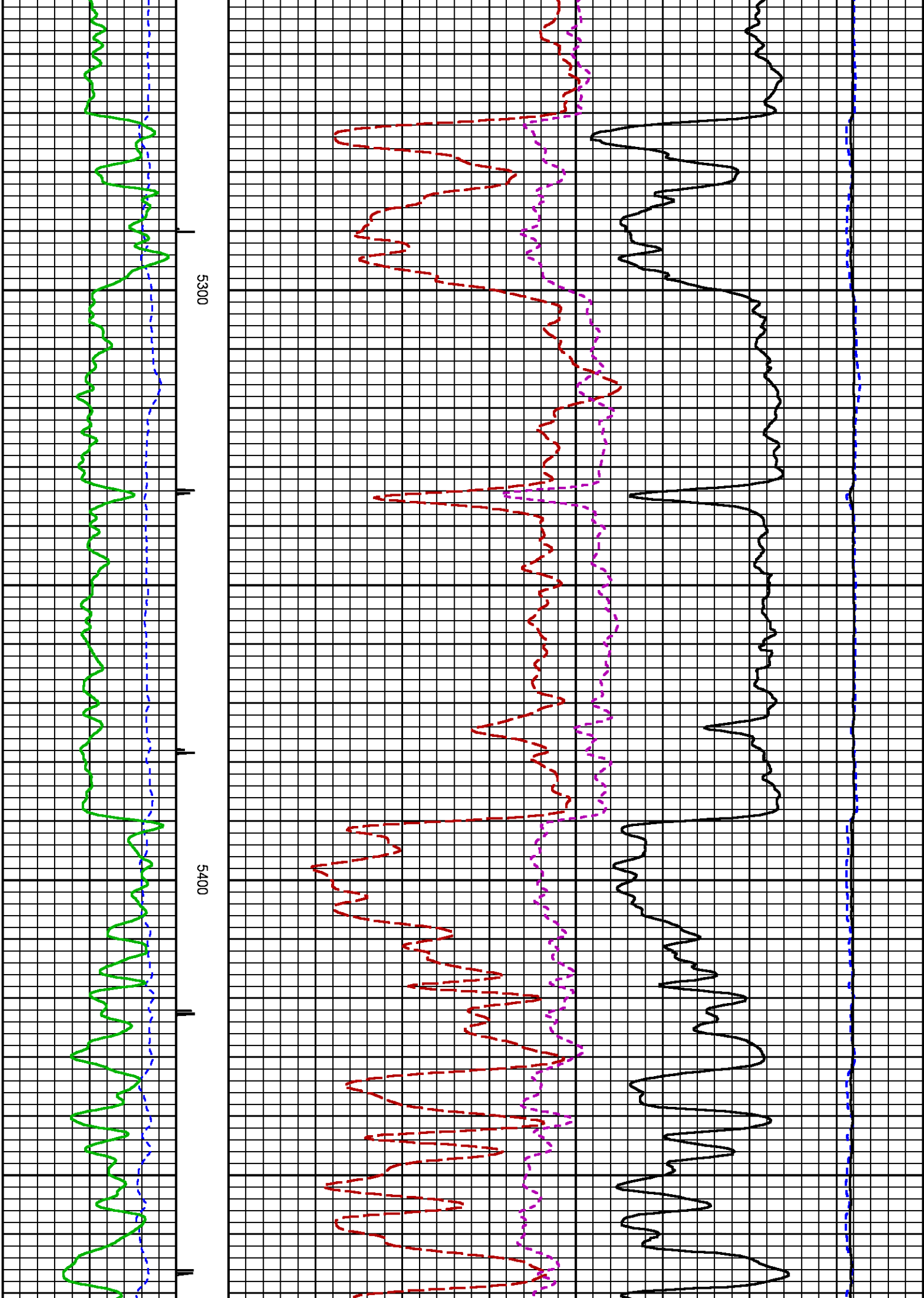
CCL	25.00	ISS	12.75	RATO	12.75	SGFC	12.75
GR	22.75	LS	12.75	RICS	12.75	SS	12.75

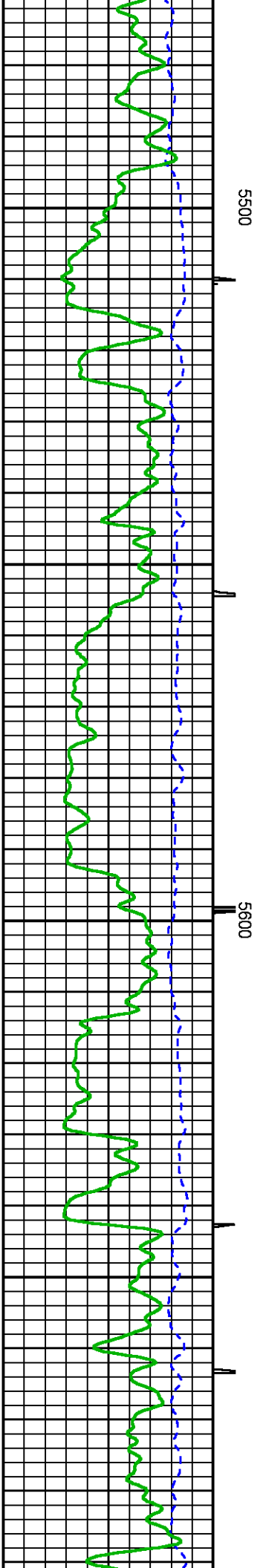
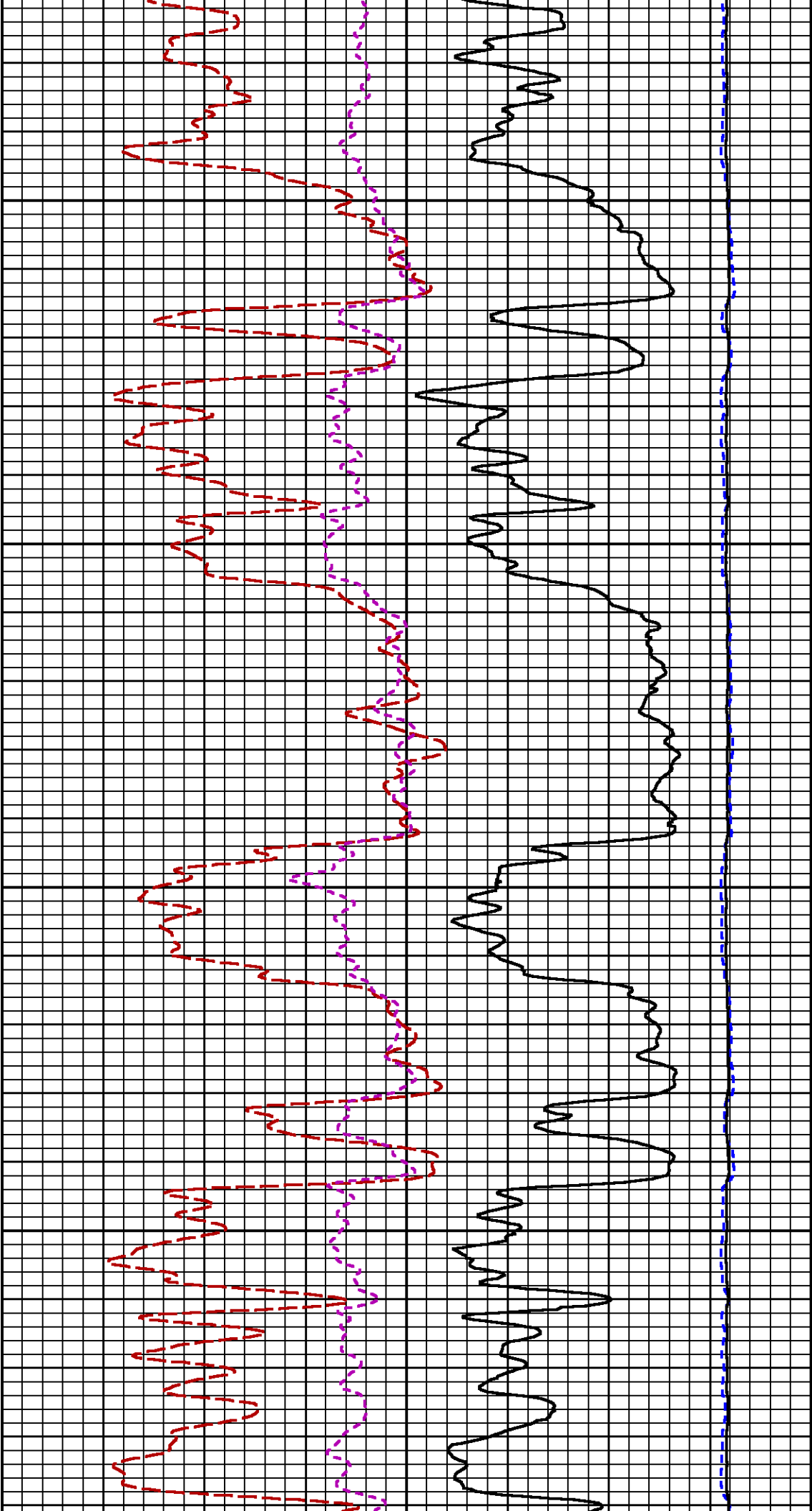
Presentation	: HL6670:WPX_rpm_pnc3D_MAIN.fvpdf [5"/100' Scale]
Plot Interval	: 4690 - 9026 Feet
Data File 1	: F1 : HL6670:/dat1a/CH087281/n354hsFINAL2.xtf
Created On	: Jun 28 15:55:34 2014
Company	: WPX ENERGY
Well	: SAVAGE RWF 43-25
Field	: RULISON
File Interval	: 23 - 9026 Feet
OCT	: n354h

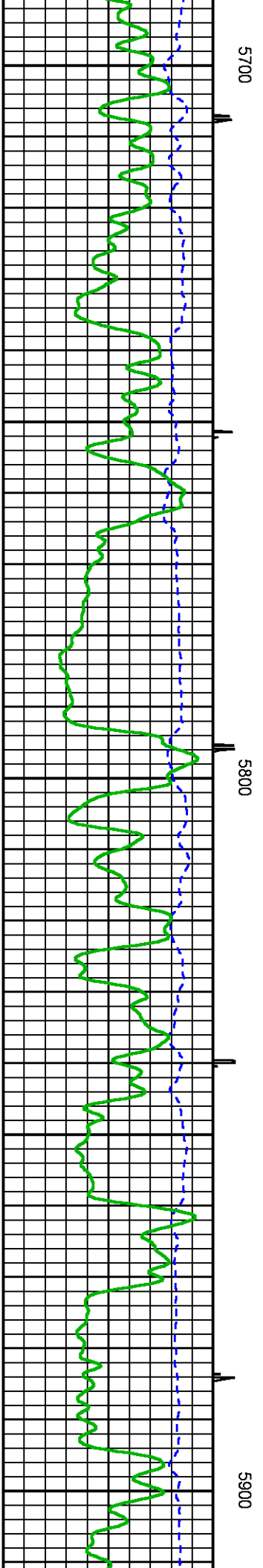
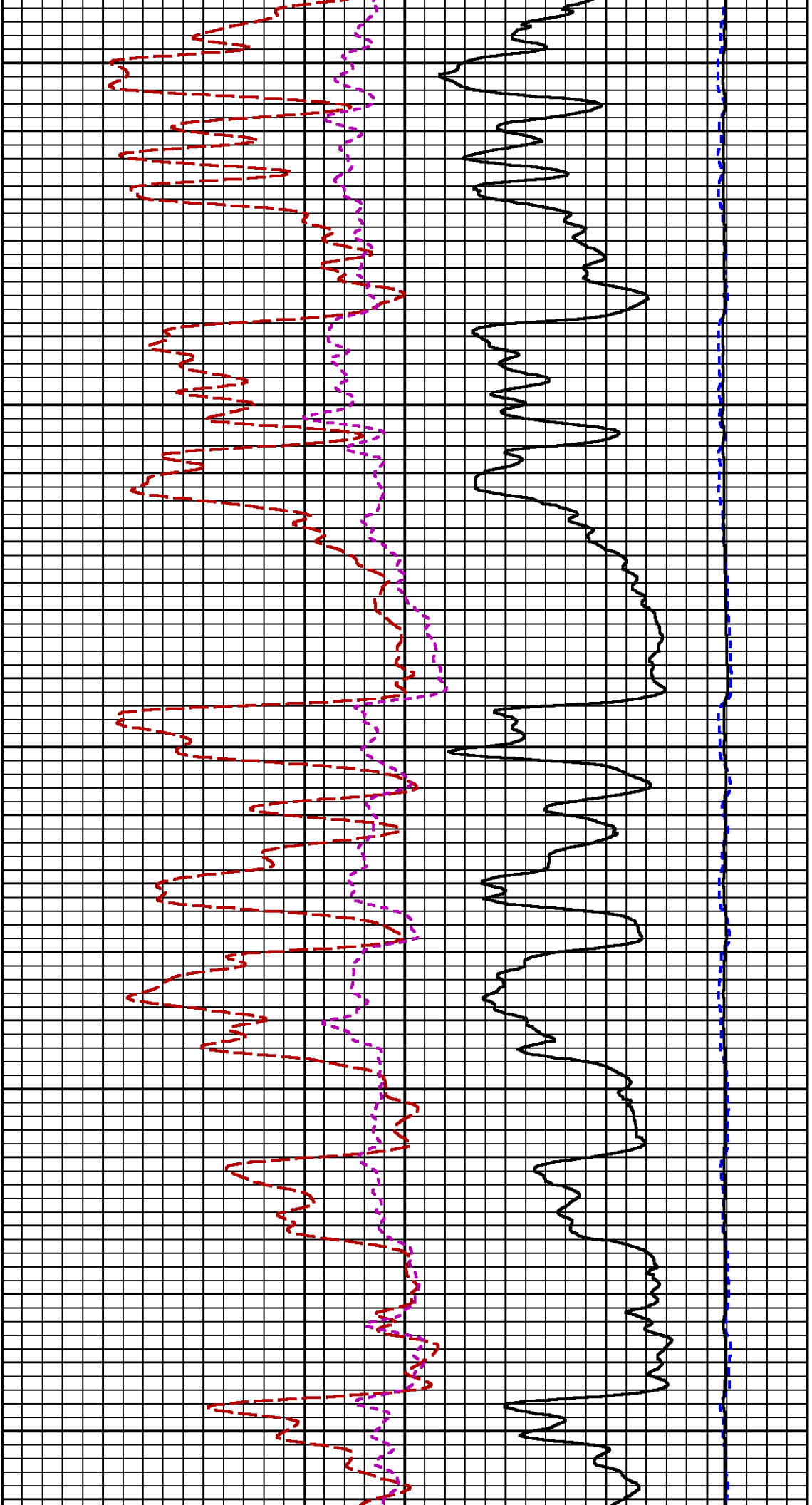


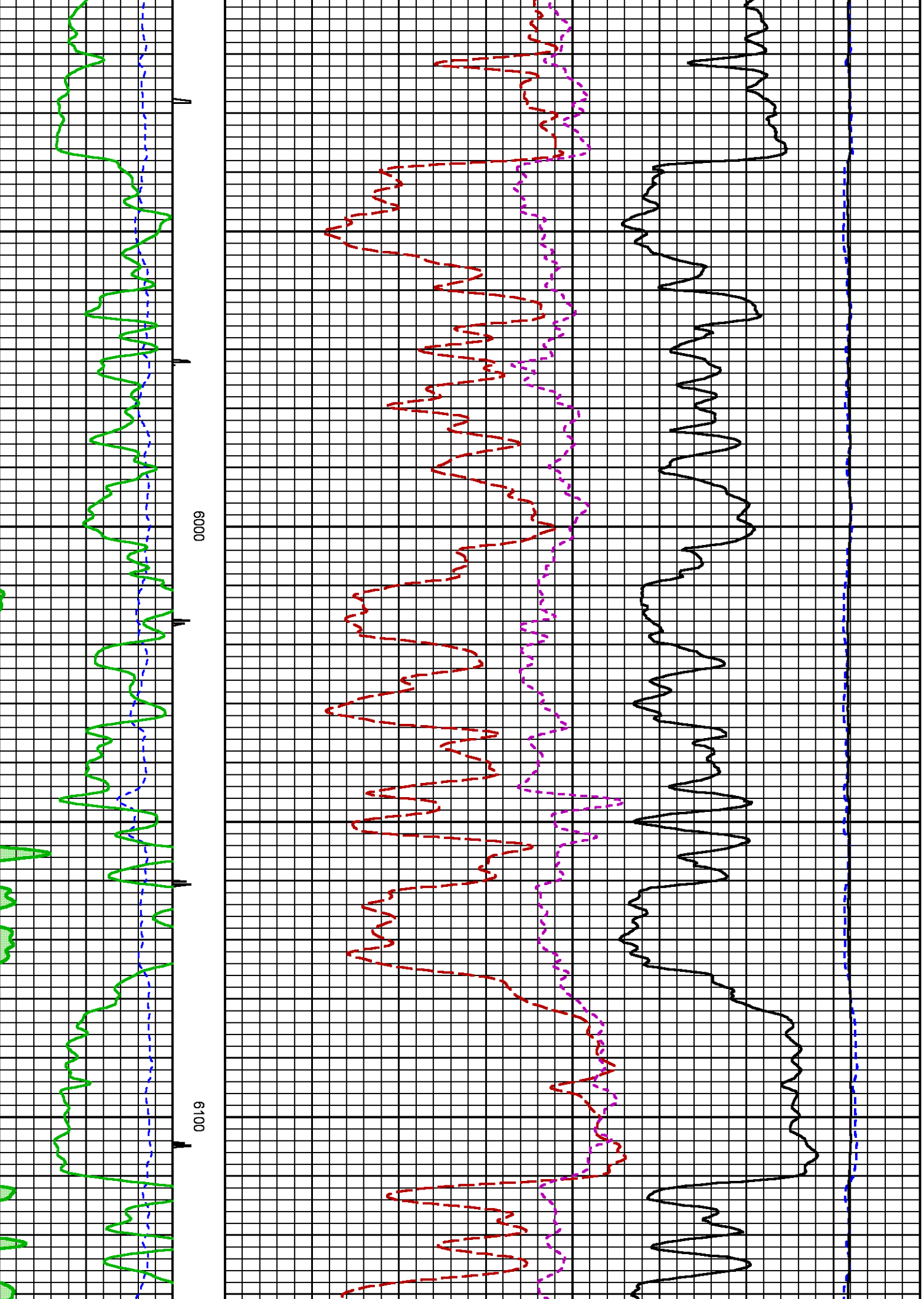


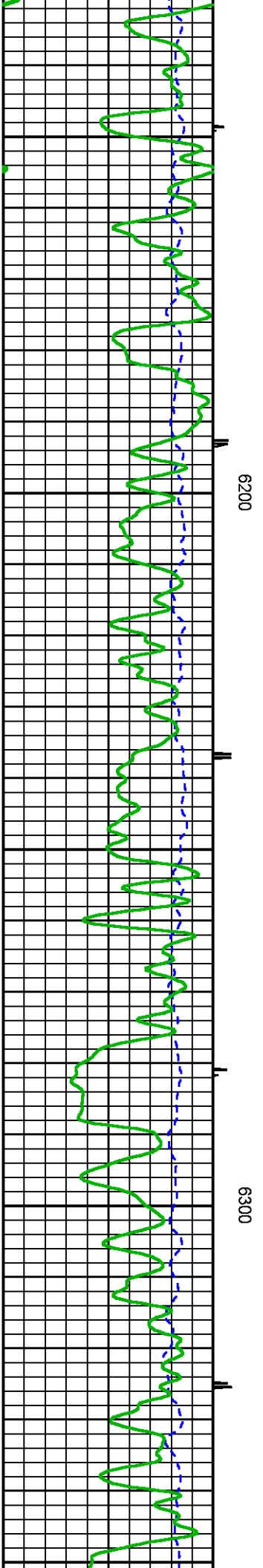
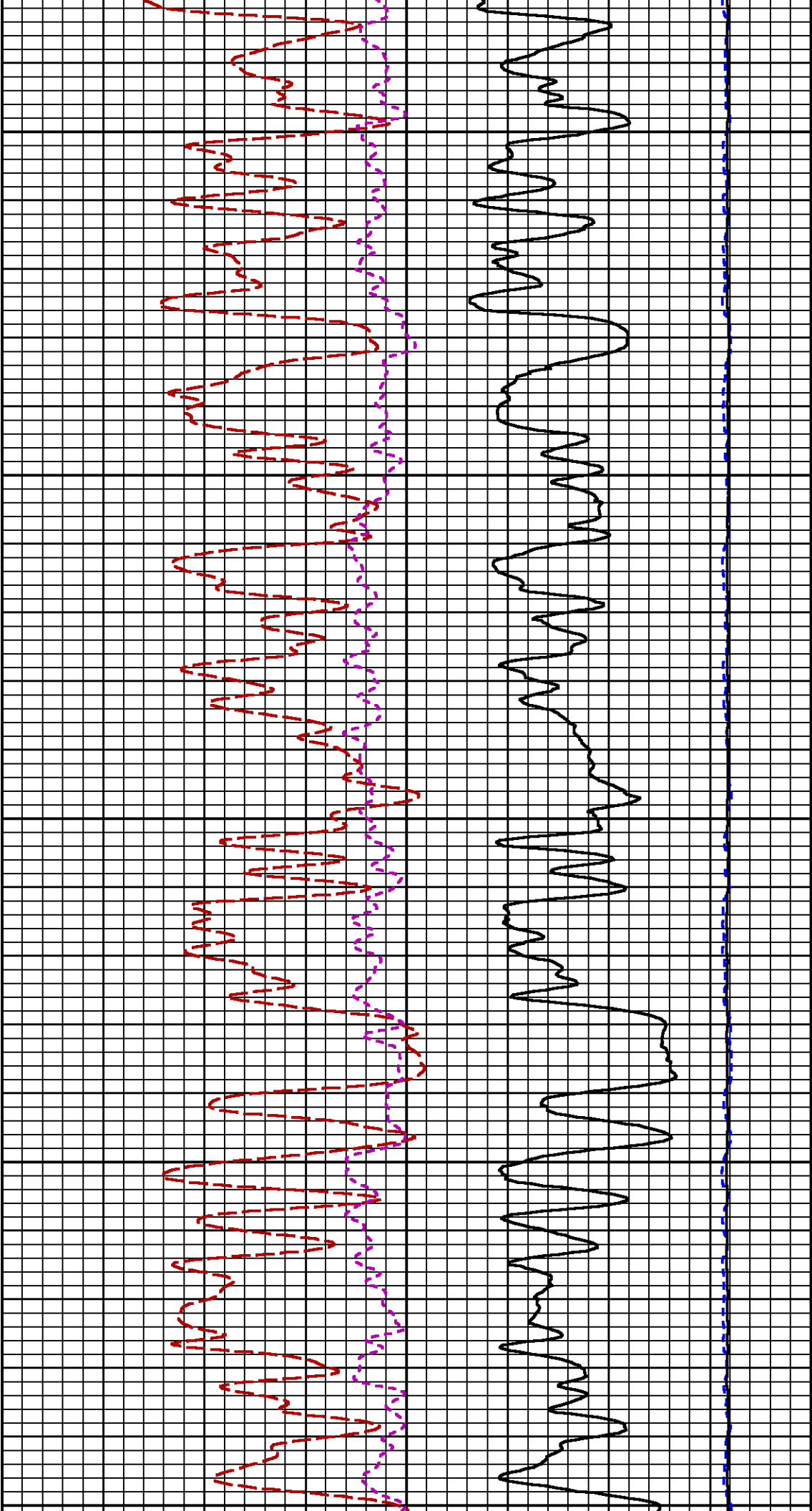


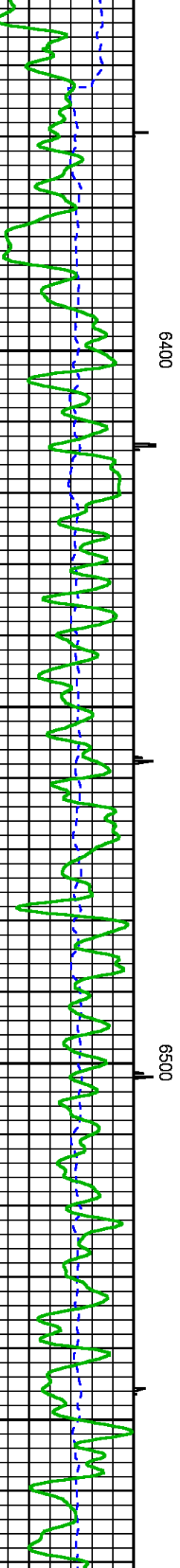
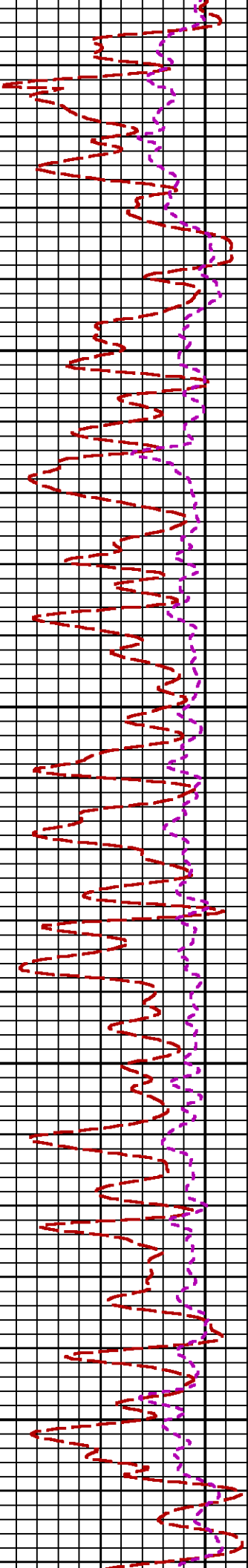
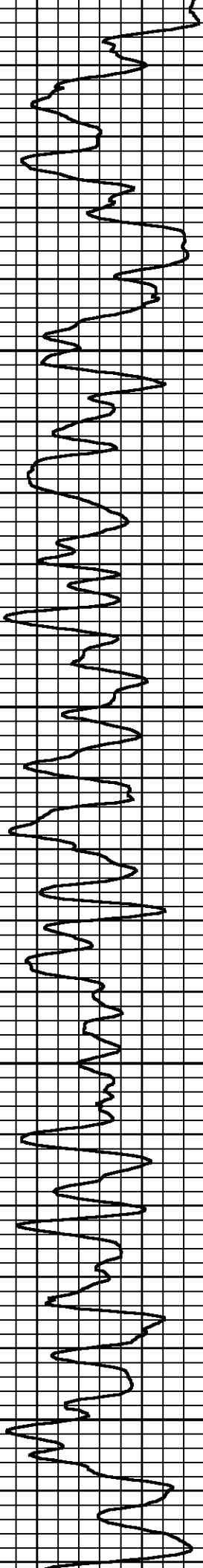


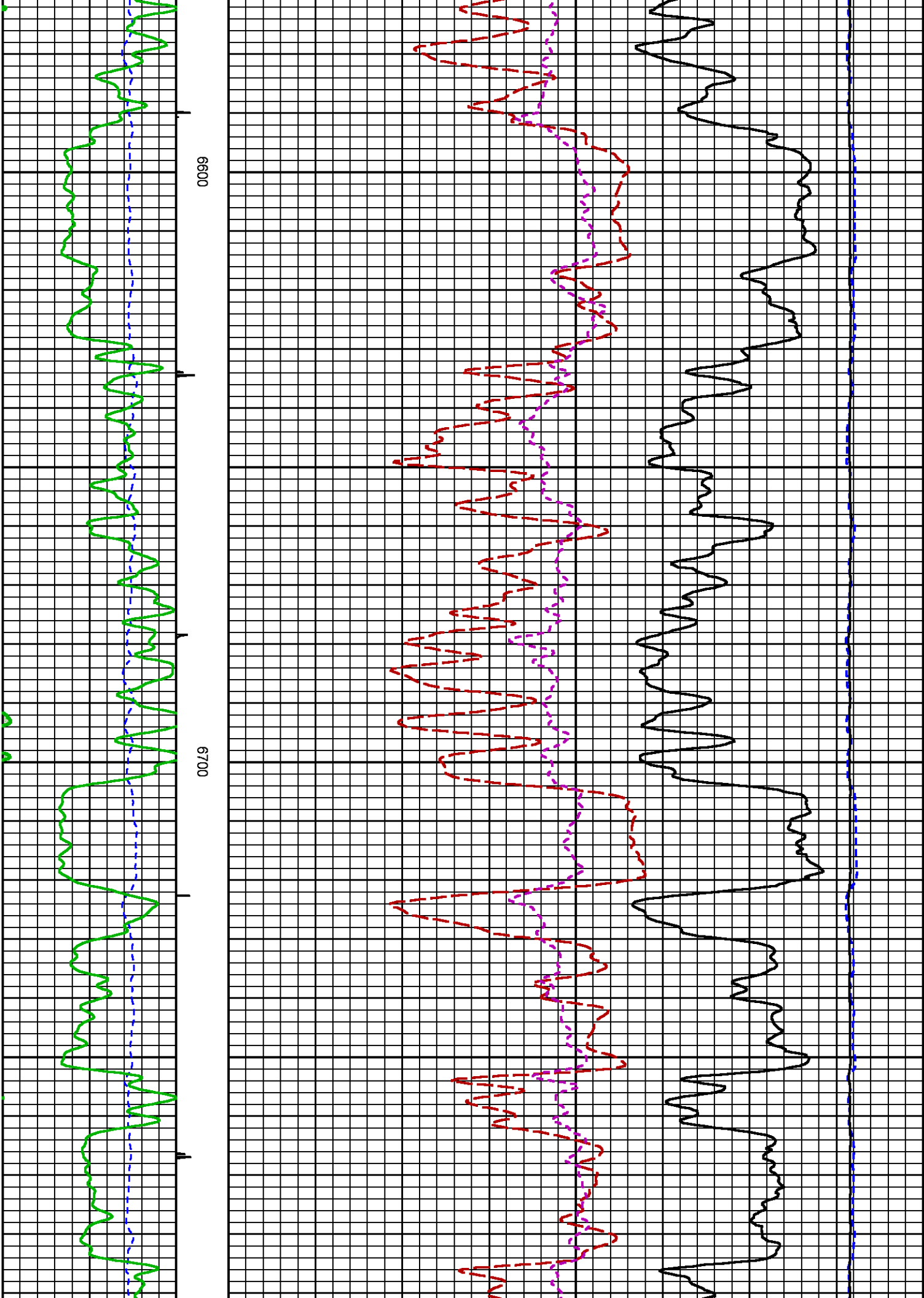


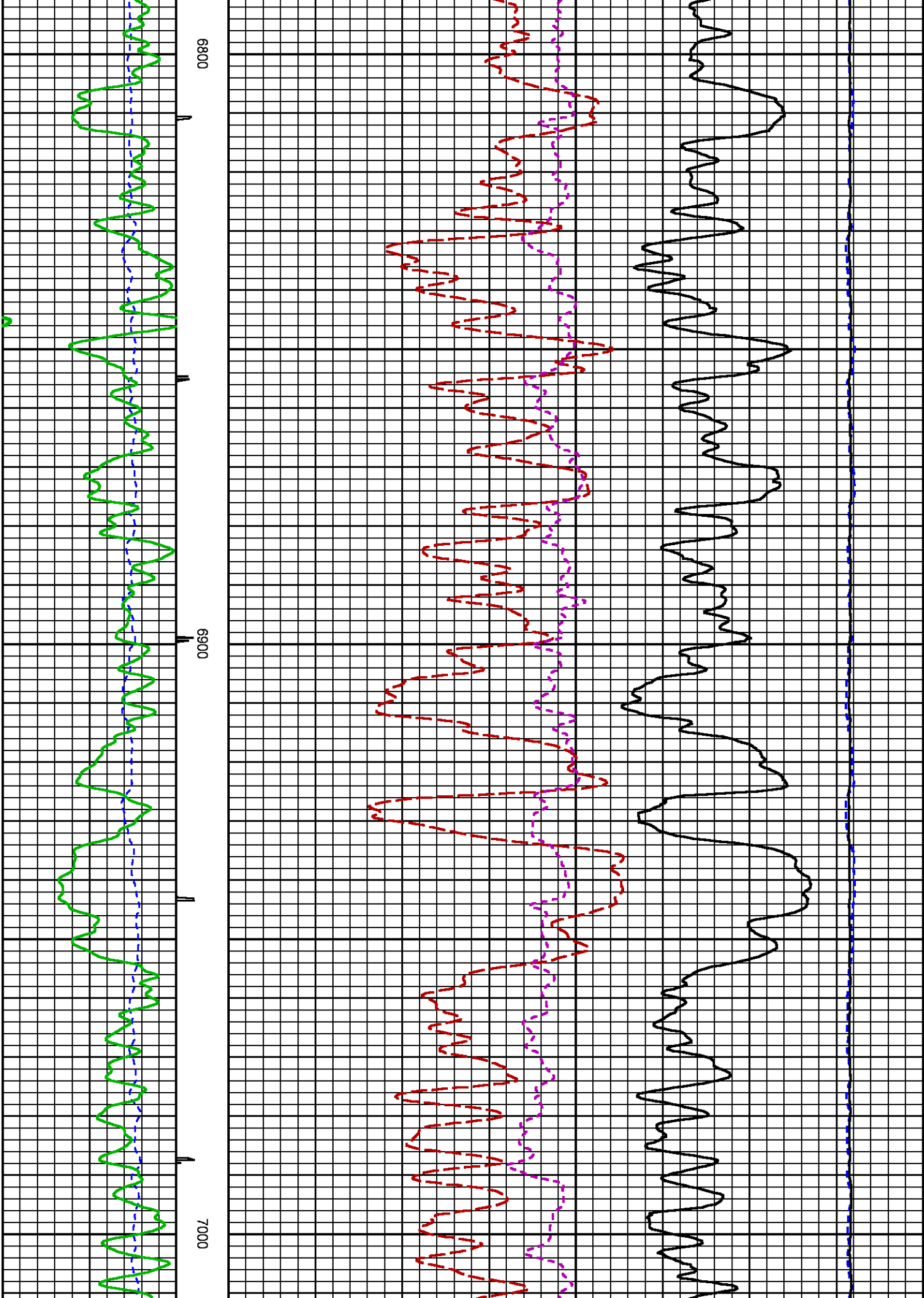


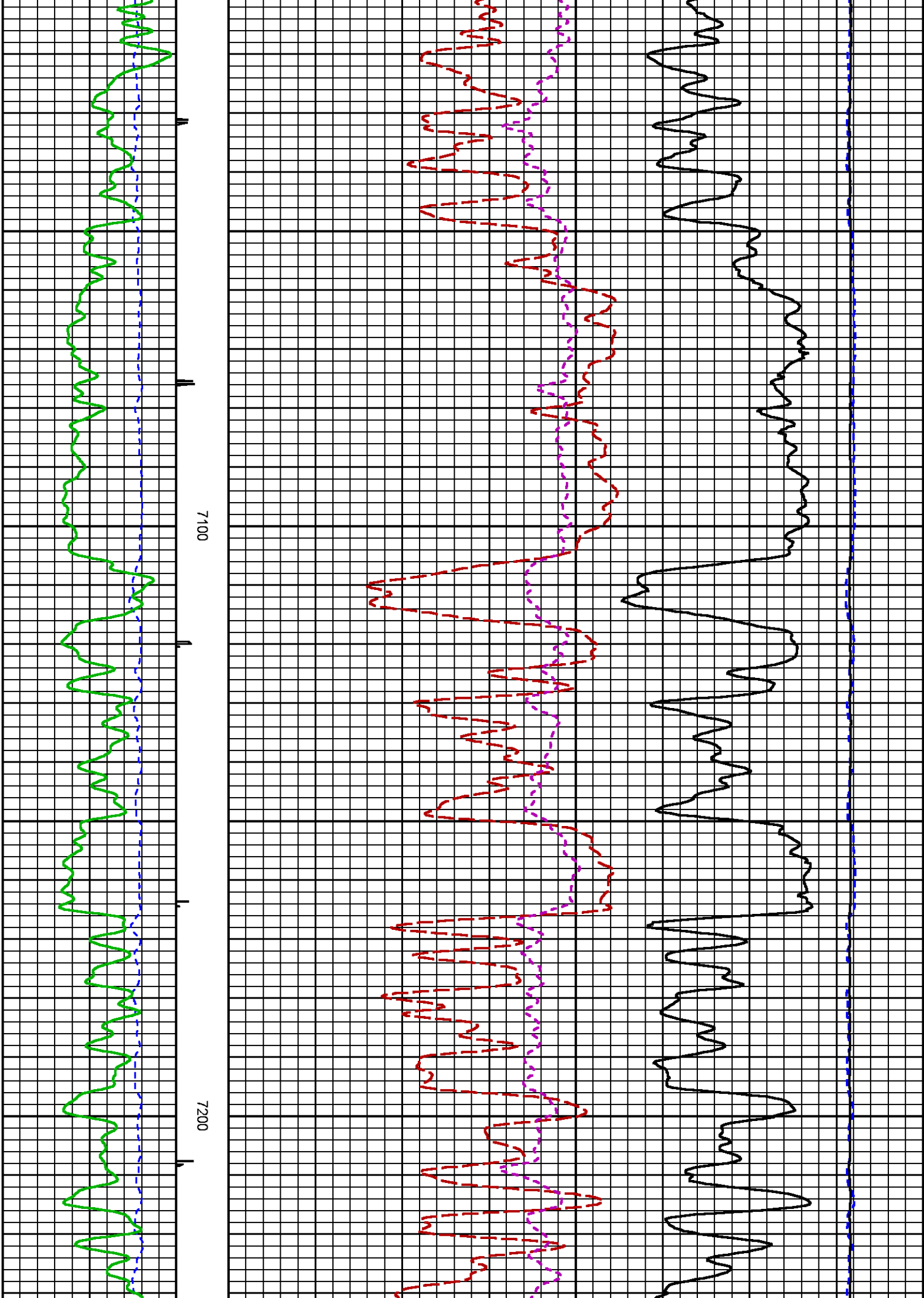


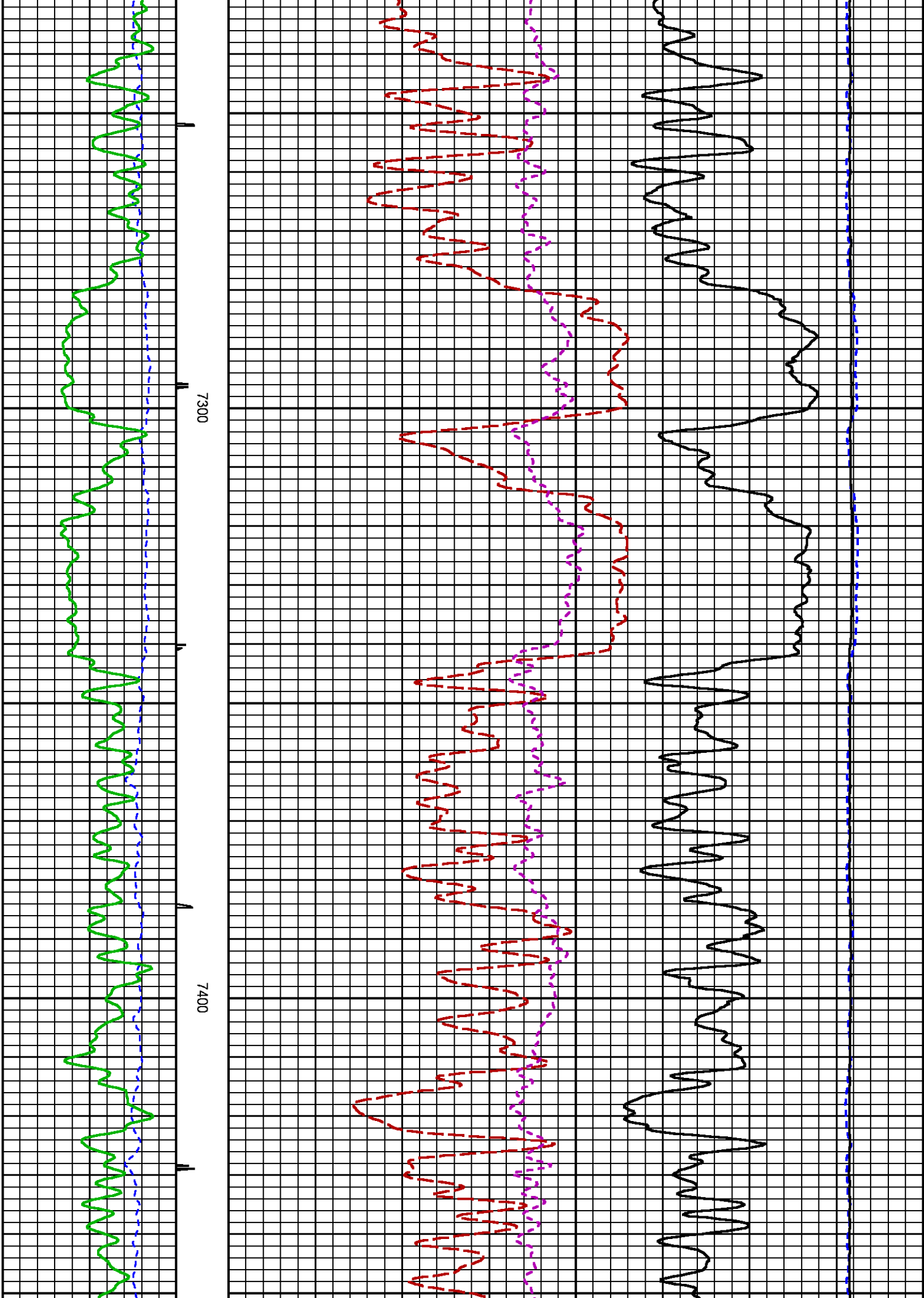


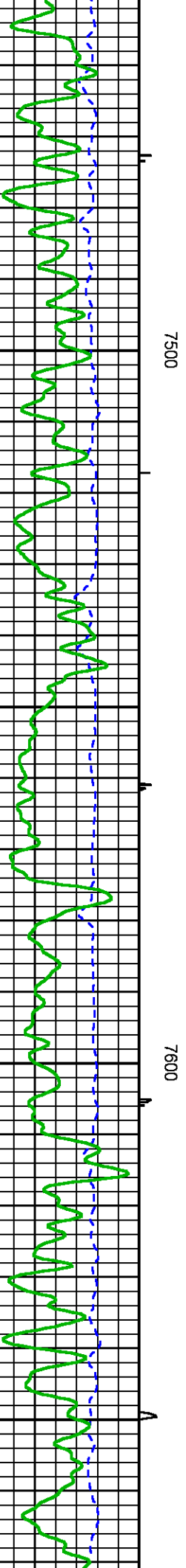
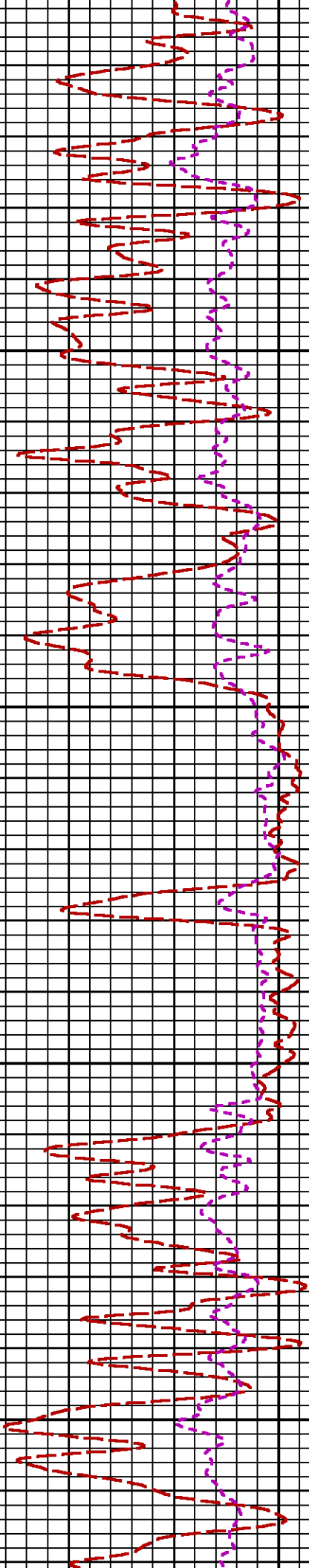
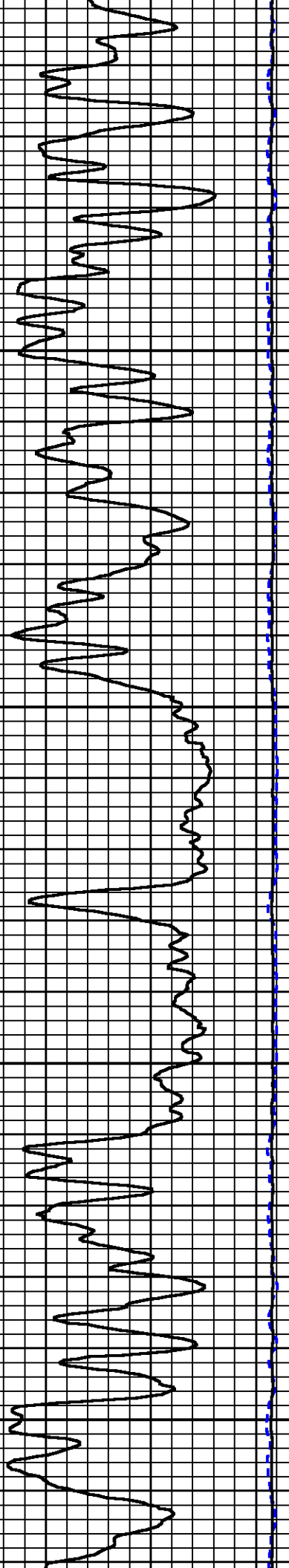


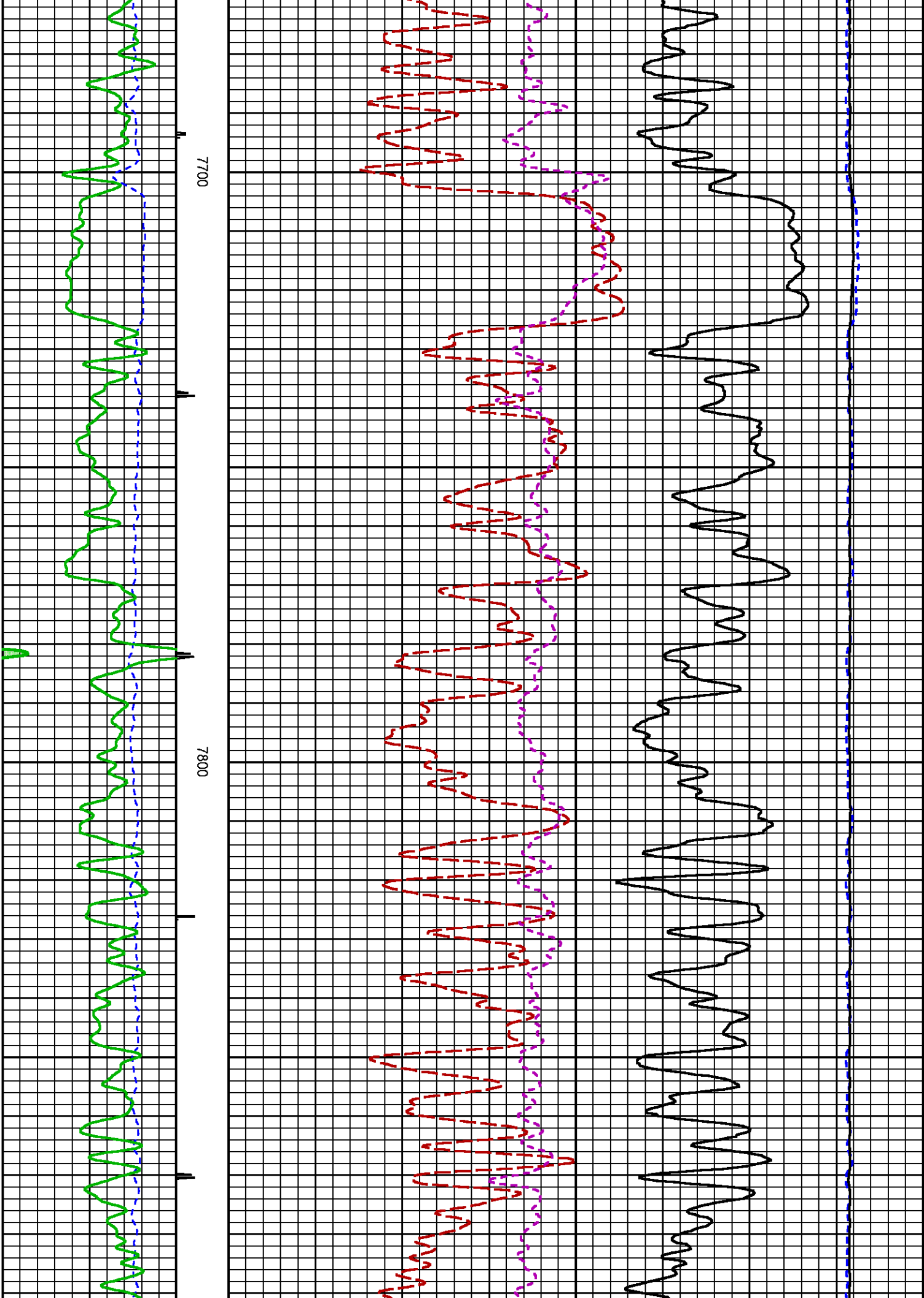


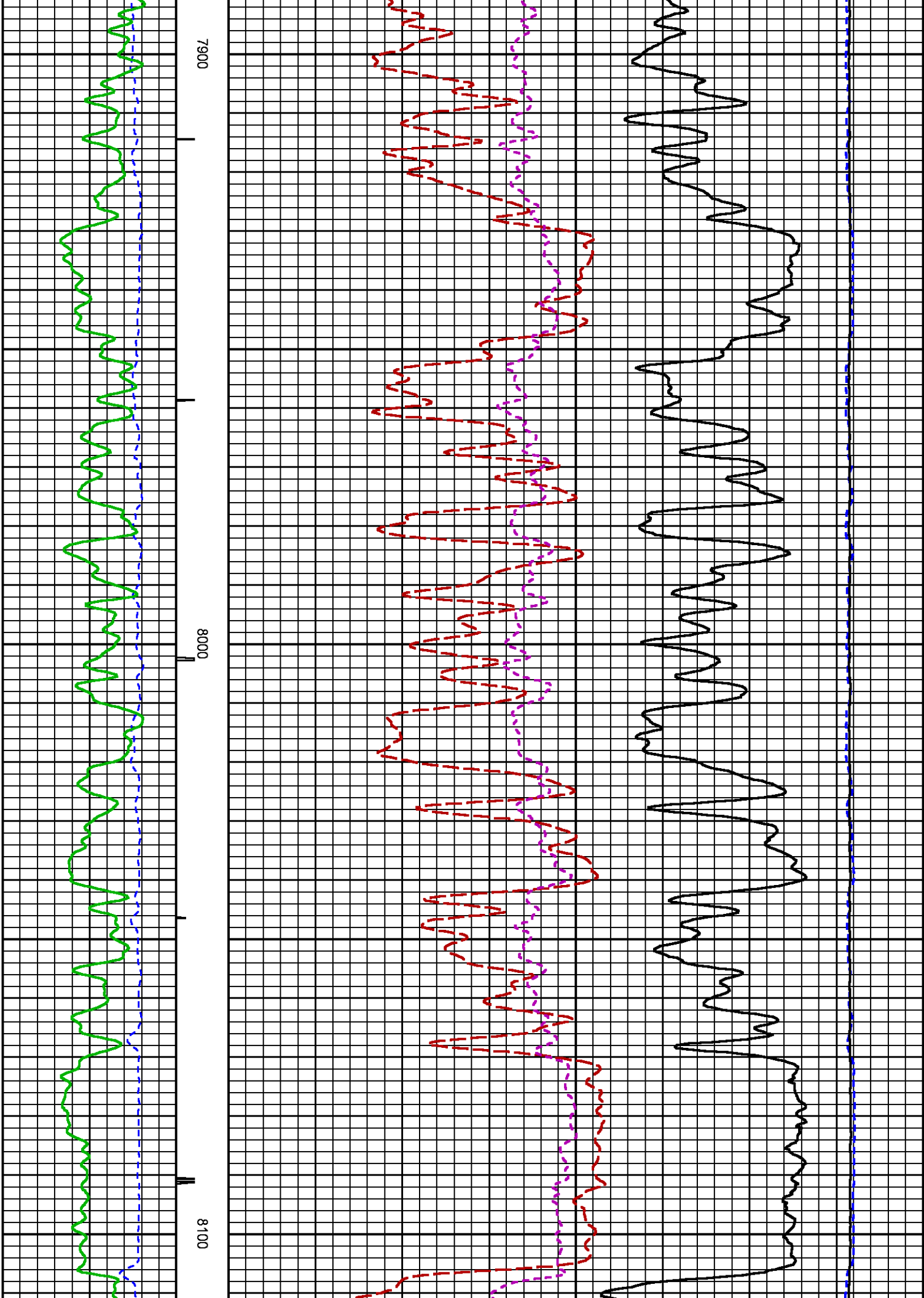


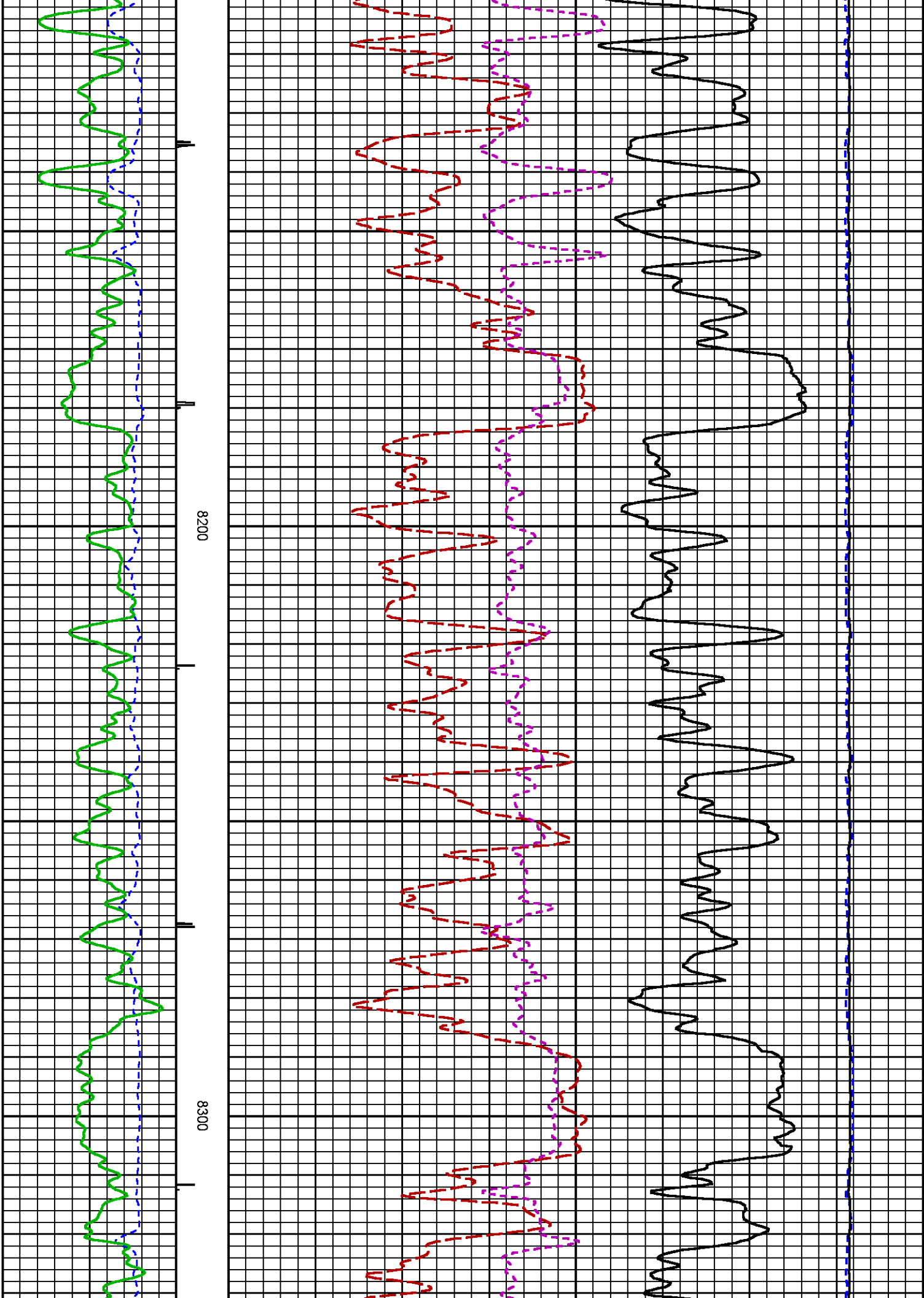


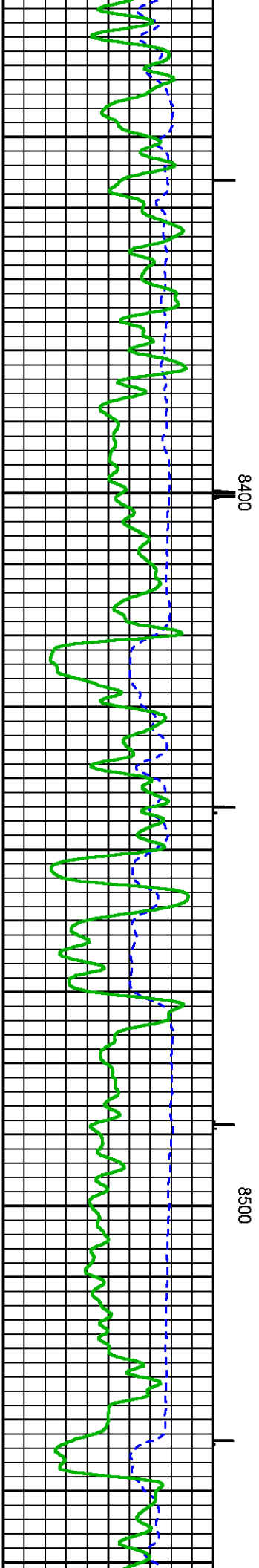
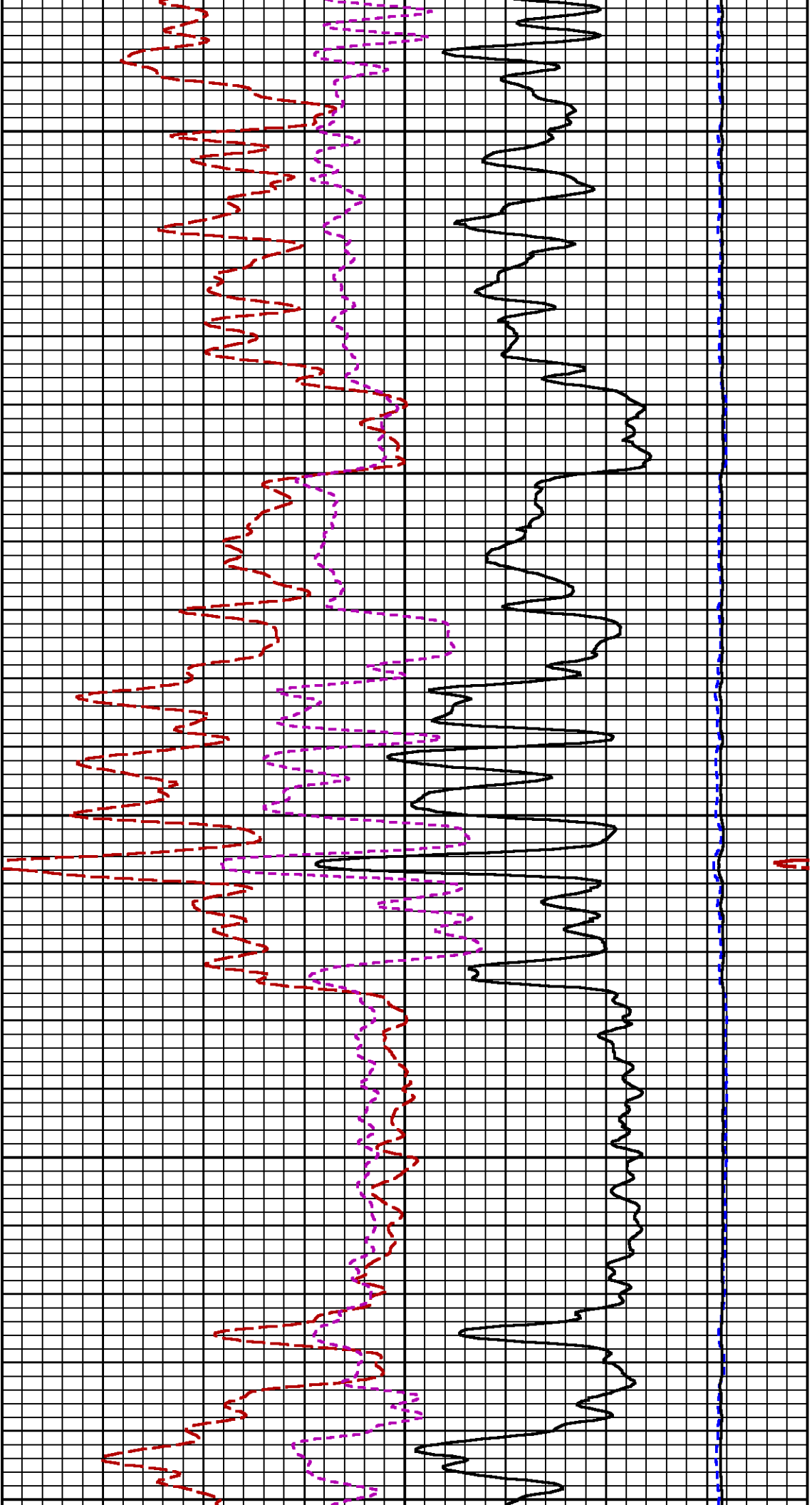


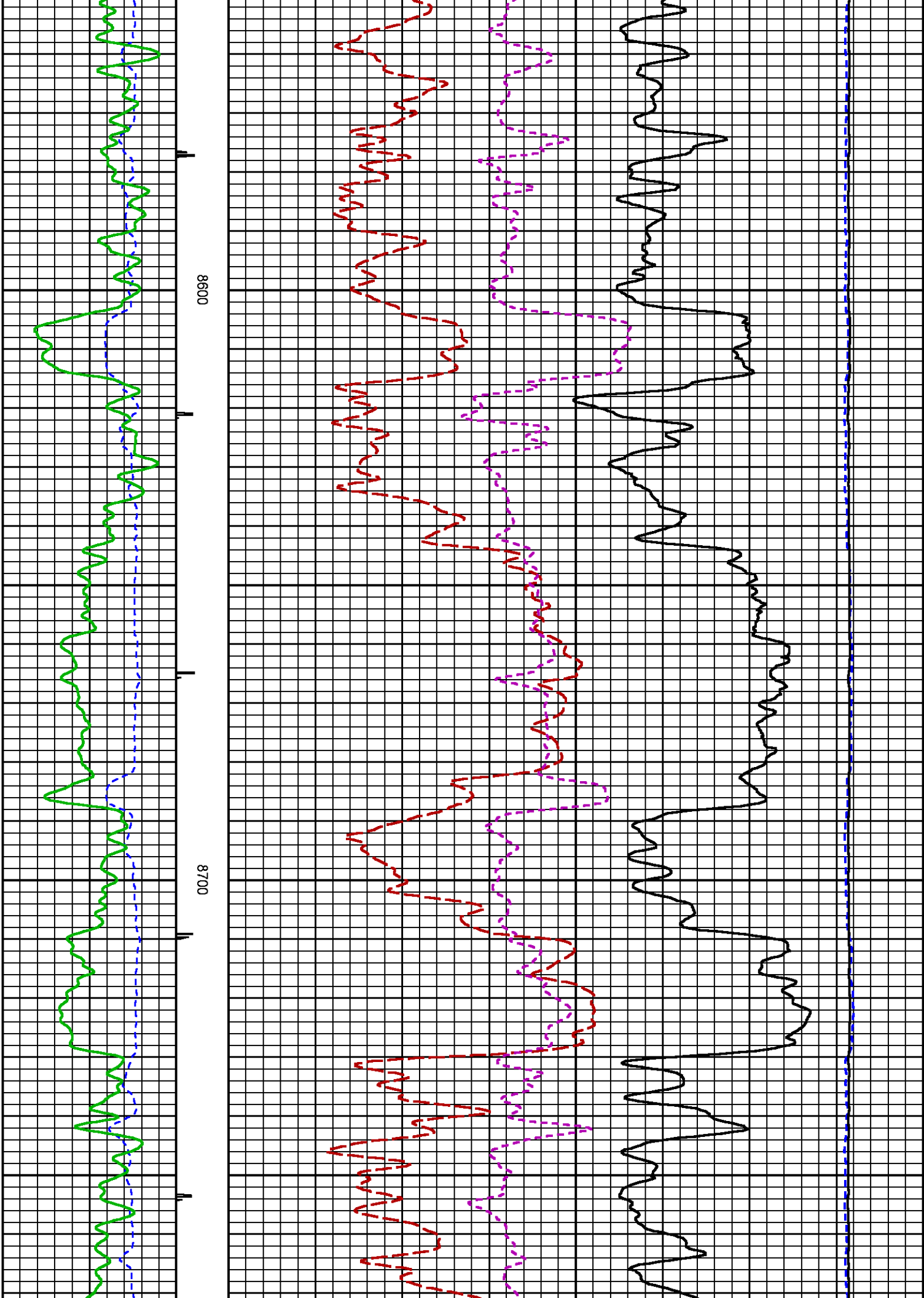


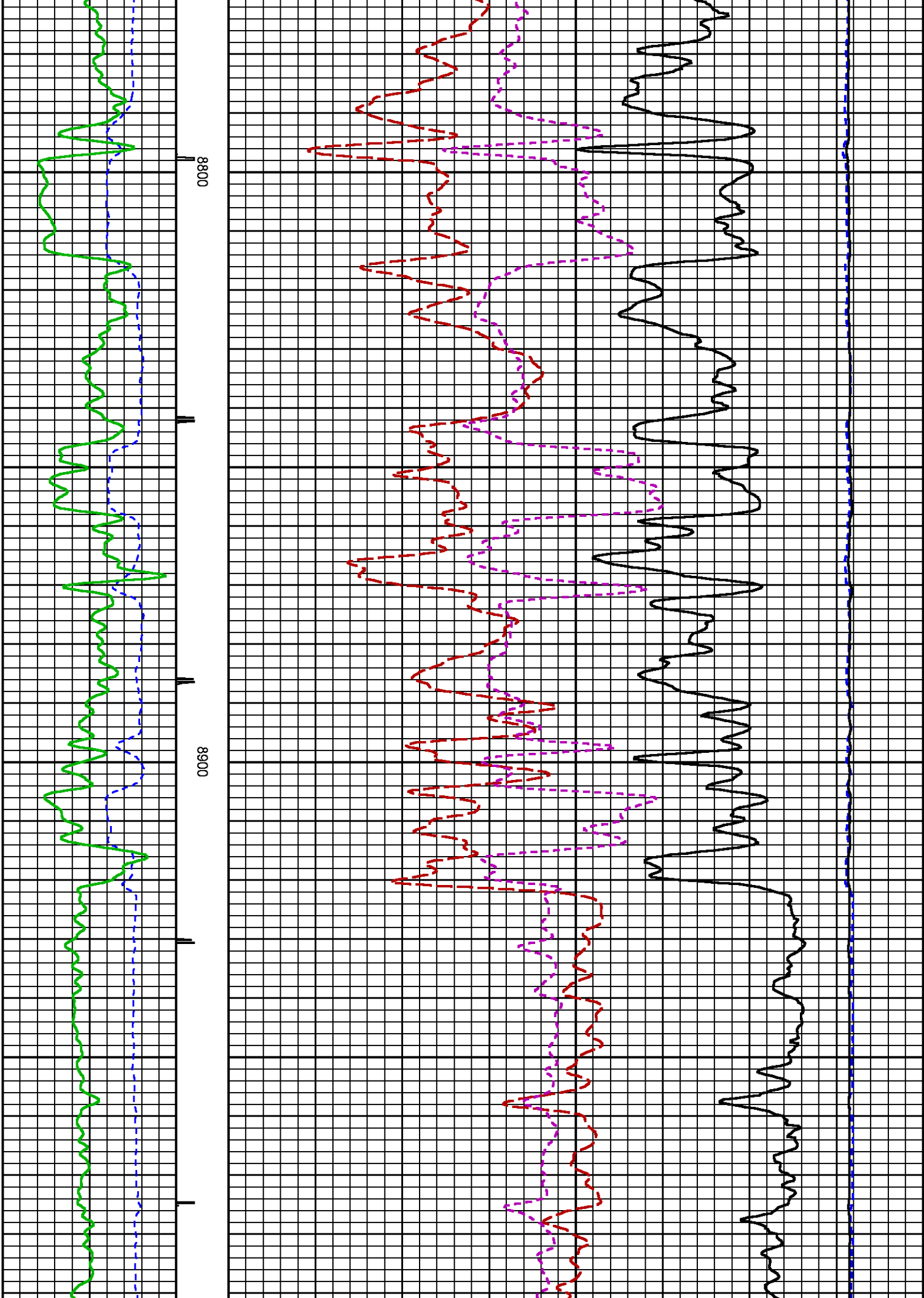


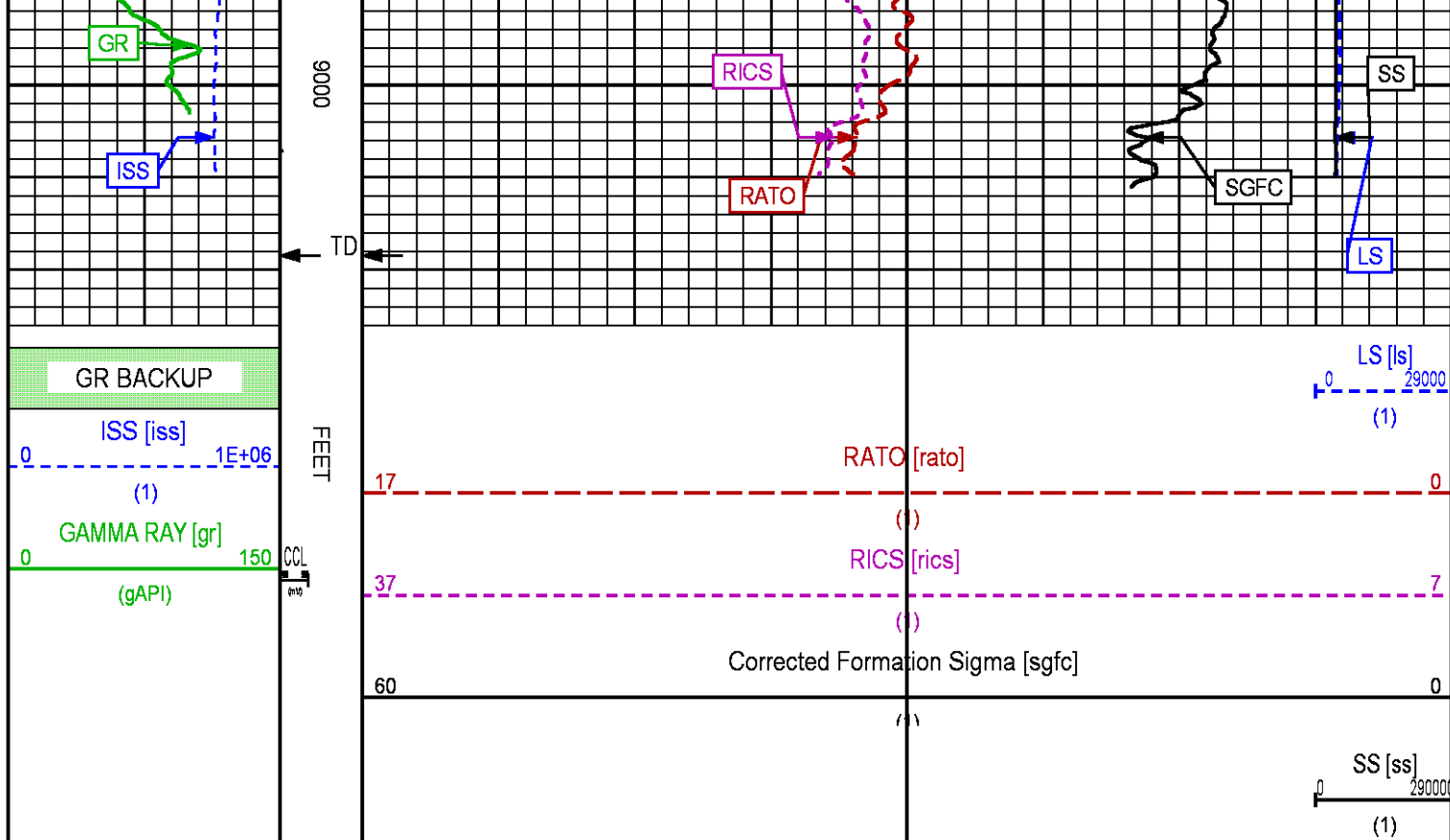












REPEAT LOG

ECLIPS 6.2i ECLIPS General Release Rel 6.2i Wed Jun 12 12:21:40 CDT 2013
Updates: 1

Plotted: Sat Jun 28 17:37:41 2014

PARAMETER AND FILTER SUMMARY REPORT

FILE: /dat1a/CH087281/n354h01.prm
LOGGING MODE: DEPTH DIRECTION: UP
TOP DEPTH: 8107.375 ft BOTTOM DEPTH: 8504.165 ft

SYMMETRIC FILTER

MEASUREMENT TYPE	PARAMETER	VALUE	UNITS	INTERVAL (ft)
GR	FILTER ()	medium (1)		TOP BOTTOM

RPM PROCESSING

MEASUREMENT TYPE	PARAMETER	VALUE	UNITS	INTERVAL (ft)
PNC Parameters	BOREHOLE CONTENTS	FLUID		TOP BOTTOM
	OPEN/CASED HOLE	CASED HOLE		" "
	BOREHOLE SIZE	8.75	in	" "
	CASING SIZE	4.50	in	" "
	MATRIX	SANDSTONE		" "
	CORRECTION BUFFER	11		" "

CURVE DESCRIPTION REPORT

CURVE NAME	CREATION DATE	CURVE DESCRIPTION
------------	---------------	-------------------

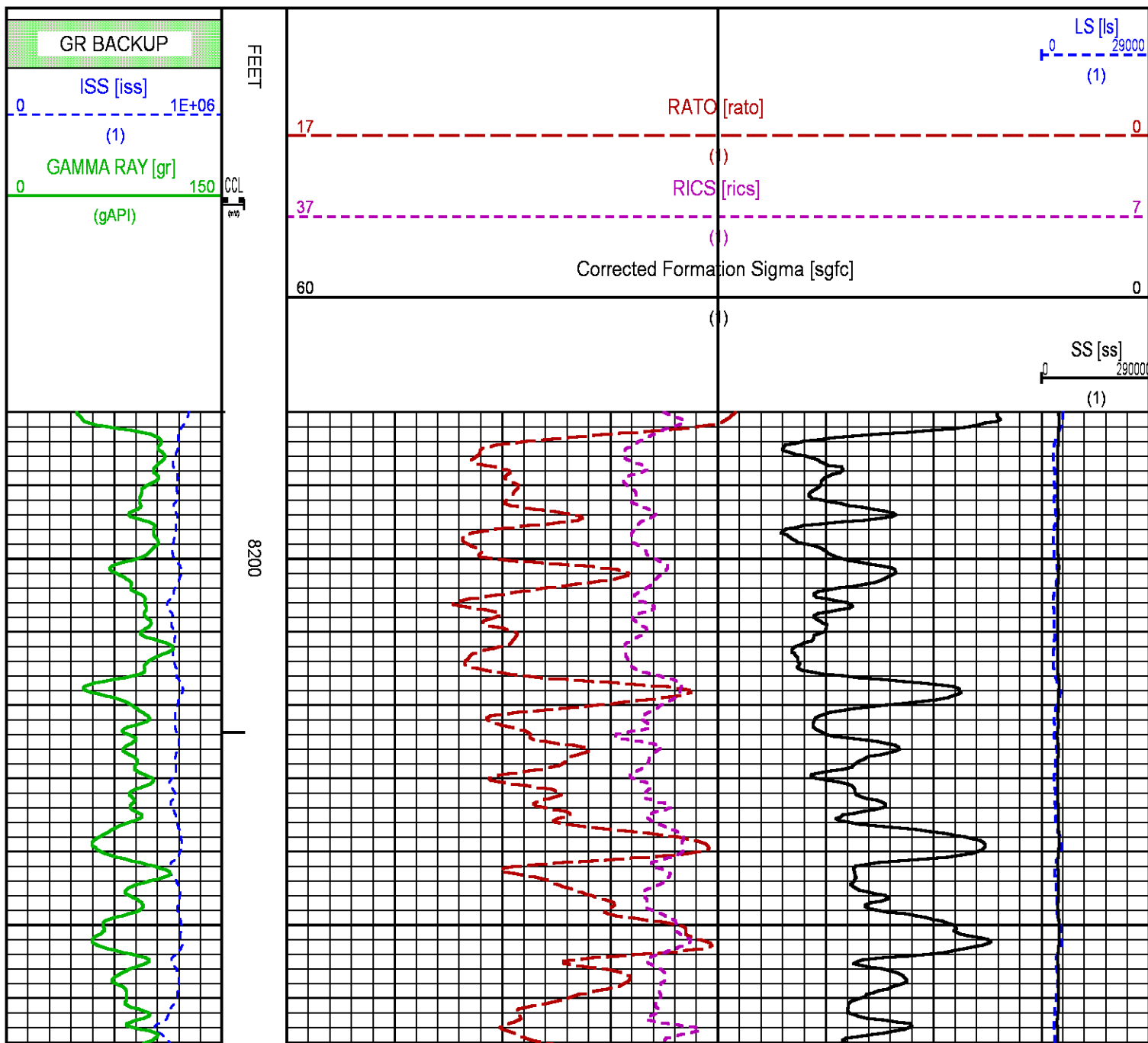
F1:CCL	Jun 28 11:50:12 2014	CASING COLLAR LOCATOR
F1:GR	Jun 28 11:50:12 2014	GAMMA RAY
F1:ISS	Jun 28 11:50:12 2014	INELASTIC SHORT SPACE COUNT RATE
F1:LS	Jun 28 11:50:12 2014	LONG SPACE COUNT RATE
F1:RATO	Jun 28 11:50:12 2014	SHORT/LONG SPACE COUNT RATE RATIO
F1:RICS	Jun 28 11:50:12 2014	SHORT SPACE INELASTIC TO CAPTURE COUNT RATE RATIO (ISS/CSS)
F1:SGFC	Jun 28 11:50:12 2014	CORRECTED FORMATION SIGMA
F1:SS	Jun 28 11:50:12 2014	SHORT SPACE COUNT RATE

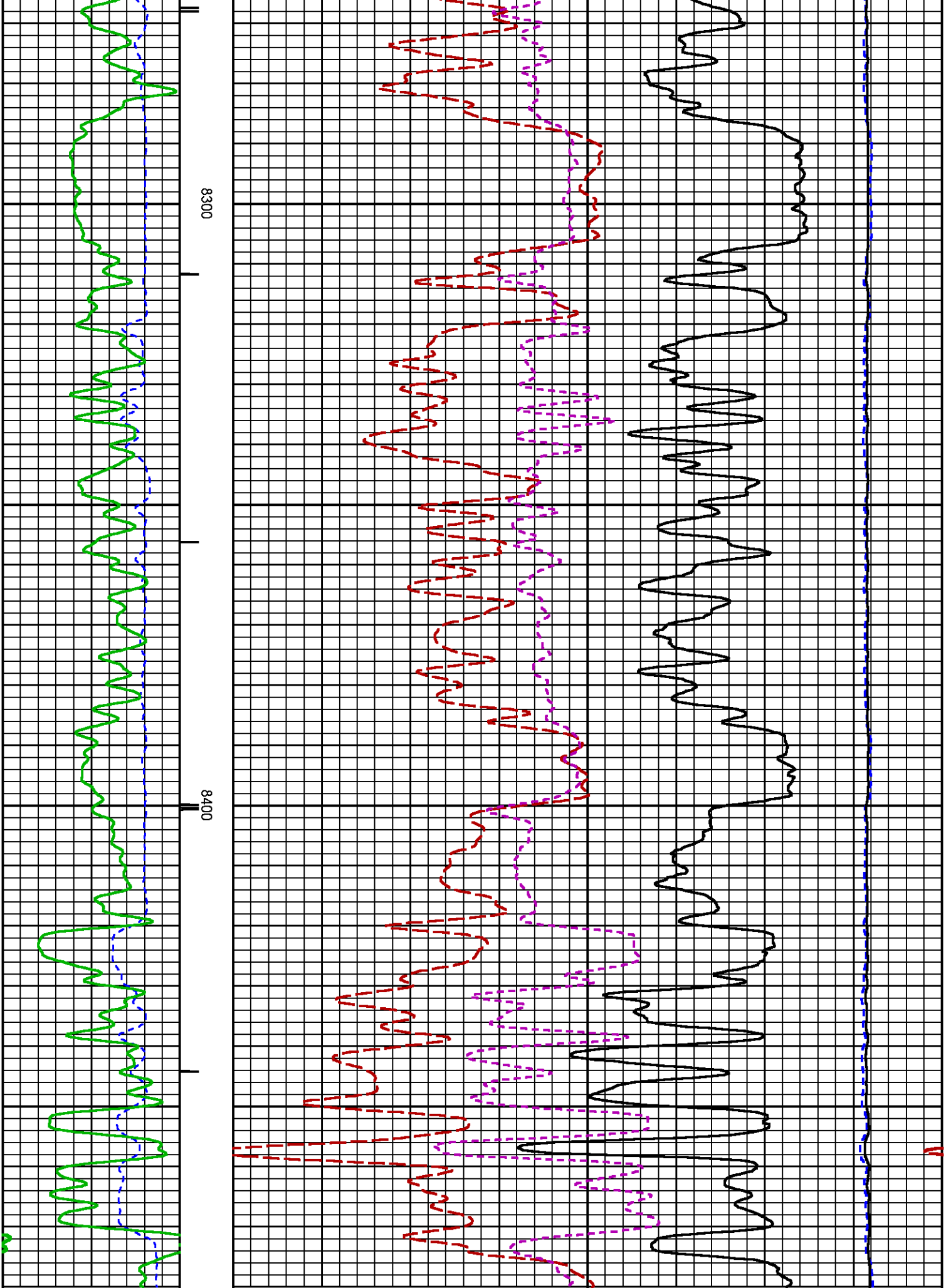
CURVE MEASURE POINT OFFSET

CURVE	OFFSET (ft)	CURVE	OFFSET (ft)	CURVE	OFFSET (ft)	CURVE	OFFSET (ft)
CCL	25.00	ISS	12.75	RATO	12.75	SGFC	12.75
GR	22.75	LS	12.75	RICS	12.75	SS	12.75

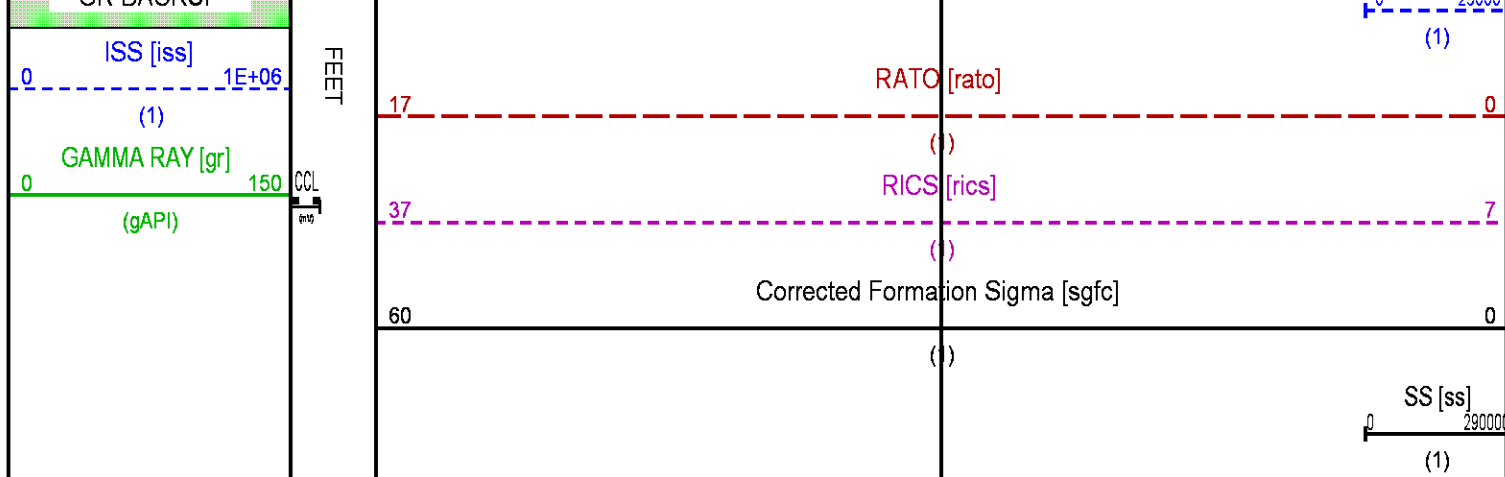
Presentation : HL6670:WPX_rpm_pnc3D_REPEAT.fvpdf [5"/100' Scale]
Plot Interval : 8180 - 8480 Feet

Data File 1 : F1 : HL6670:/dat1a/CH087281/n354h01.xtf
Created On : Jun 28 11:50:12 2014
Company : WPX ENERGY
Well : SAVAGE RWF 43-25
Field : RULISON
File Interval : 23 - 9016.5 Feet
OCT : n354h





LS [s]
20000



CALIBRATION / VERIFICATION SUMMARY

Source File: /dat1a/CH087281/RPM.lp1

GR PRIMARY CALIBRATION SUMMARY

TOOL #: 2812LA 11701636

DATE/TIME PERFORMED: Sat Jun 7 13:49:20 2014

UNIT #: 3880TA HL6670

CALB JIG #: 4702NK DA-041

	BACKGROUND (cts/s)	CALBRTR ON (cts/s)	CR DIFF (cts/s)	MULT	BACKGROUND (gAPI)	CALBRTR ON (gAPI)	CALBRTR (gAPI)
GR	64.73	269.38	204.6	1.026	66.43	276.43	210

GR PRIMARY VERIFICATION SUMMARY

TOOL #: 2812LA 11701636

DATE/TIME PERFORMED: Sat Jun 7 13:51:47 2014

UNIT #: 3880TA HL6670

VERI JIG #: 4702NK DA-041

	BACKGROUND (cts/s)	CALBRTR ON (cts/s)	MULT	BACKGROUND (gAPI)	CALBRTR ON (gAPI)	DIFF. (gAPI)
GR	62.22	269.36	1.026	63.85	276.40	212.55
						200.00 220.00

RPM_PNC_3D PRIMARY CALIBRATION SUMMARY

TOOL: 8283PA 10466231

DATE/TIME PERFORMED: Sat Jun 7 13:46:01 2014

UNIT: 3880TA HL6670

CALIBRATOR: 2437XB 112674

SOURCE: 8281AA 11724361

HOURS: 8281AA 150

	ISS	Mtr Vits (V)	SS Gain	LS Gain	XLS Gain	EA Temp (degF)	Sync Delay (usec)	RCAL
Raw Data	793110	120	2274	2285	2265	136	7	0.9713
Interpolated	1300000	142	2257	2280	2263			

	ISS	BKS	BKL	BKX	SGA1	SDA1	SGA2	SDA2
Raw Data	793110	6702	1051	147	26.05	0.15	24.16	0.33
					25.35 26.40	0.00 0.20	23.60 24.80	0.00 0.40

	ISS	ILS	IXS	SS	SS2	LS	CSS	CLS
Raw Data	793110	163084	25428	88862	31655	8202	53870	13116

Fit Quality %		1.050	1.105	1.067	1.070	1.105	1.011	1.080
	ISS	RBOR	RIN	RIN13	RICS	RATO	RTWO	RONE
			ISS/LS	ISS/XS	ISS/CSS	SS/LS	SS2/LS	CSS/CLS
Raw Data	793110	1.44	4.86	31.21	14.72	10.84	3.86	4.11
		1.42 1.45	3.55 5.52	22.20 32.70	10.99 16.34	10.06 11.10	3.57 3.95	3.76 4.22
Fit Quality %		0.032	0.127	0.067	0.089	0.111	0.100	0.071
Reduced	1399095	1.43	4.86	31.17	14.69	10.86	3.87	4.11
		1.42 1.45	4.33 5.52	27.60 32.70	13.70 16.34	10.06 11.10	3.57 3.95	3.76 4.22

TPSETEMP PRIMARY CALIBRATION SUMMARY

TOOL #: 8255XA 166341

DATE/TIME PERFORMED: Sat Jun 28 11:12:23 2014

UNIT #: 3880TA HL6670

	T(0)	T(1)	T(2)	T(3)
Corr Coeff for Temp	1.112722E-05	-6.595931E-12	3.011507E-19	-2.270919E-26

INSTRUMENT CONFIGURATION

Source File: /dat1a/CH087281/RPM_TEMP.tdg



RPM_C DETECTOR SECTION
Diameter : 1.70"
Length : 9.40'
Weight : 41 lbs
Series : 8283PA
Mnemonic : RPM
Measure Point: 5.45': XLS DETECTOR
Measure Point: 5.04': LS DETECTOR
Measure Point: 4.79': SS DETECTOR

XLS DETECTOR 13.38'
LS DETECTOR 13.16'
SS DETECTOR 12.91'

RPM_SOURCE SECTION
Diameter : 1.70"
Length : 4.70'
Weight : 18 lbs
Series : 8281FA
Mnemonic : RPM

TEMPERATURE / PRESSURE
Diameter : 1.70"
Length : 3.30'
Weight : 13 lbs
Series : 8255XA
Mnemonic : SRPL
Measure Point: 1.52': TEMP MP

TEMP MP 1.65'
PRES MP

BULL PLUG 1 11/16

0.00'

TOTAL LENGTH: 33.24'
TOTAL WEIGHT: 140 lbs
MAX DIAMETER: 0'1.70"



COMPANY	WPX ENERGY INC
WELL	SAVAGE RWF 43-25
FIELD	RULISON
COUNTY	GARFIELD
STATE	CO

FILE NO:	CH087281
API NO:	05045219920000

LOCATION:
SHL: 1192' FSL 1382' FEL
BHL: 2483' FSL 627' FEL
SEC 25 TWP 6S RGE 94W

ELEVATIONS:
KB 6260 FT
DF
GL 6234 FT
DATE 28-Jun-2014

S25 T6S R94W
PAD: RWF 43-25
NABORS 577