

8/22/2014

VIA ELECTRONIC TRANSMITTAL

Colorado Oil and Gas Conservation Commission
Attn: Matt Lepore, Director
1120 Lincoln Street, Suite 801
Denver, CO 80203

Re: 30 Day Certification Letter – Rule 318Ae

Pastelak 01N-64W-02 Pad - Pastelak 01N-64W-02-1C, Pastelak 01N-64W-02-2N, Pastelak 01N-64W-02-3N, Pastelak 01N-64W-02-4N, Pastelak 01N-64W-02-5C, Pastelak 01N-64W-02-6N, Pastelak 01N-64W-02-7N, Pastelak 01N-64W-02-8N, Pastelak 01N-64W-02-9C

**NENW of Section 2, Twp 1N, Range 64W, 6th PM
Weld County, CO**

Dear COGCC Director,

Verdad Oil and Gas Corporation (Verdad) herby certifies to the Director that a thirty (30-day) notice has been given by certified mail to all owners in the proposed wellbore spacing unit consisting of 320 acres comprised of W/2 of Sec 02-T1N-R64W. Verdad received an objection to the proposed spacing unit, however, the exception was withdrawn on August 15, 2014. No additional objections were received for the subject well locations or proposed spacing unit, therefore Verdad hereby requests the Director to approve the proposed wells.

If you should have any questions or concerns regarding this permit, please contact the undersigned at 214-838-2783.

Sincerely,



L. Arthur Beecherl, IV
Vice President of Operations
Verdad Oil and Gas Corporation

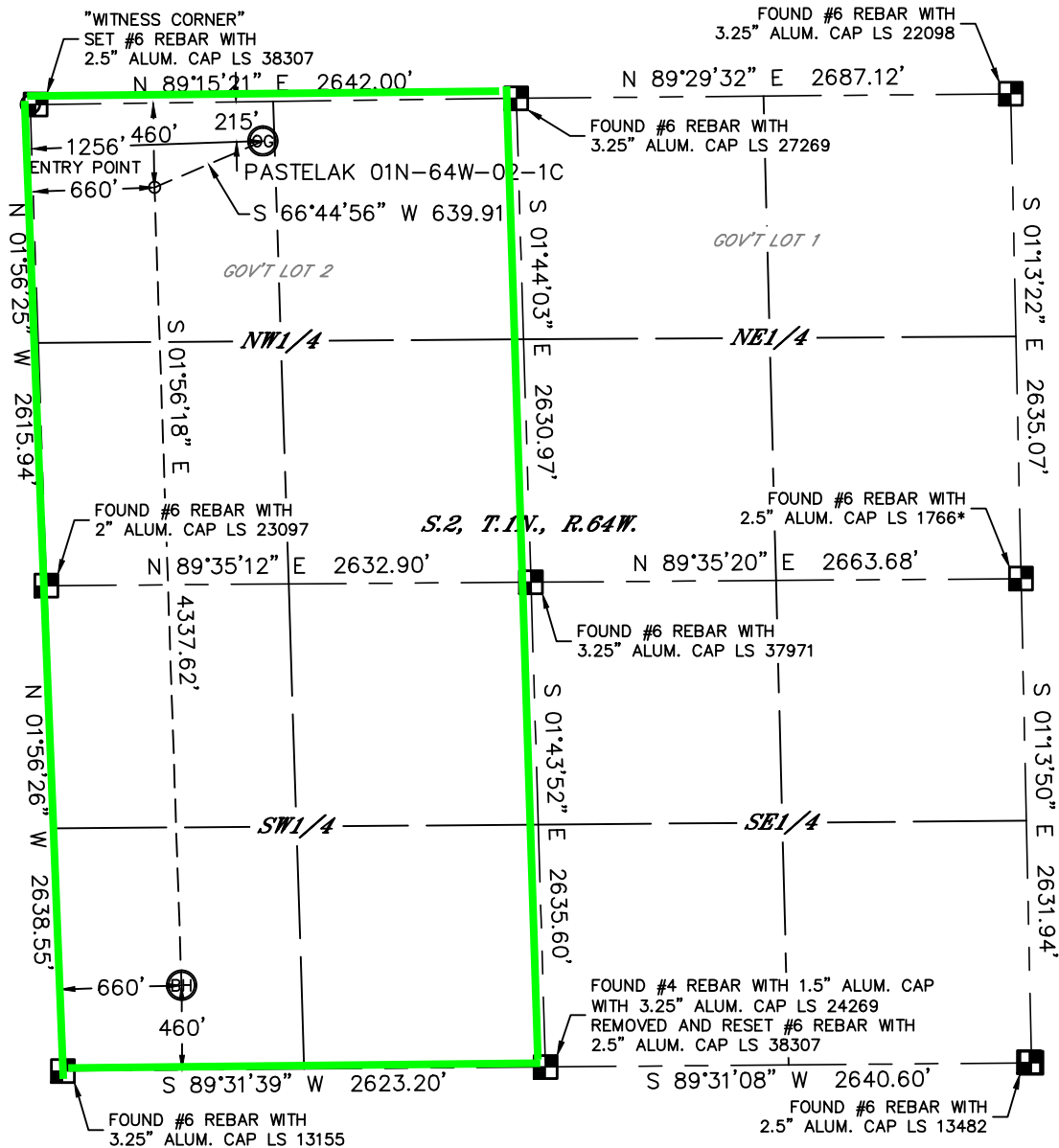


Lat40°, Inc. 1635 Foxtrail Drive, Suite 325 Loveland, CO 970-776-3321

WELL LOCATION CERTIFICATE

SECTION: 2
TOWNSHIP: 1N
RANGE: 64W

THIS MAP DOES NOT REPRESENT A BOUNDARY SURVEY



In accordance with a request from Arthur Beecherl with VERDAD OIL AND GAS CORPORATION Lat40°, Inc. has determined the surface location of the PASTELAK 01N-64W-02-1C to be 215' from the NORTH line and 1256' from the WEST line and the bottom hole to be 460' from the SOUTH line and 660' from the WEST line as measured at right angles from the section lines of Section 2, Township 1 North, Range 64 West of the Sixth Principal Meridian, County of Weld, State of Colorado.

I hereby state that this Well Location Certificate was prepared by me, or under my direct supervision, that the fieldwork was completed on 6/24/2014, for and on behalf of VERDAD OIL AND GAS CORPORATION. That this is not a Land Survey Plat or an Improvement Survey Plat, and that it is not to be relied upon for establishment of fence, building, or other future improvement lines.

SURFACE LOCATION

LAT: 40.08706°N
LONG: 104.52331°W
PDOP: 2.2
ELEV: 5014'
1/4,1/4: NWNW

BOTTOM HOLE

LAT: 40.07448°N
LONG: 104.52507°W

ENTRY POINT

LAT: 40.08638°N
LONG: 104.52542°W

LEGEND

- = ALIQUOT MONUMENT AS DESCRIBED
- = CALCULATED POSITION

Kyle E. Rutz—On behalf of Lat40°, Inc.
Colorado Licensed Professional
Land Surveyor No. 38307

DATE: 8/19/2014
PROJECT#: 2014105

NOTE:

- 1) Bearings shown are Grid Bearings of the Colorado State Plane Coordinate System, North Zone, North American Datum 1983. The lineal dimensions as contained herein are based upon the "U.S. Survey Foot."
- 2) Ground elevations are based on an observed GPS elevation (NAVD 1988 DATUM).
- 3) IMPROVEMENTS: See LOCATION DRAWING for all visible improvements within 500' of disturbed area.
- 4) SURFACE USE: CROP LAND
- 5) INSTRUMENT OPERATOR: WYATT HALL
- 6) NEAREST CULTURAL ITEMS:
BUILDING: ±512' NW
BUILDING UNIT: ±578' W
HIGH OCCUPANCY BUILDING UNIT: +5280'
DESIGNATED OUTSIDE ACTIVITY AREA: +5280'
PUBLIC ROAD: ±1398' NE (CR 14)
ABOVEGROUND UTILITY: ±748' SW
RAILROAD: +5280'
PROPERTY LINE: ±215' N

