



# WELLS RANCH STATE AA21-66-1HN 1":100' TVD

Company: NOBLE ENERGY  
Well Name: WELLS RANCH STATE AA21-66-1HN  
API: 05-123-37712  
Rig Id: H&P 277  
State: CO  
County/Parish: WELD COUNTY  
Country: USA  
Survey Company: DRILTECH, LLC  
Job number: 2014-001-IDDT-CO  
MARK LARUE MWD OPERATOR  
JEREMY HOWE MWD OPERATOR

Log measurements:  
Depth measured from:  
Maximum temperature: 220.3

Depth Date  
Start: 1000 ft 1/4/14  
End: 11003 ft 1/9/14

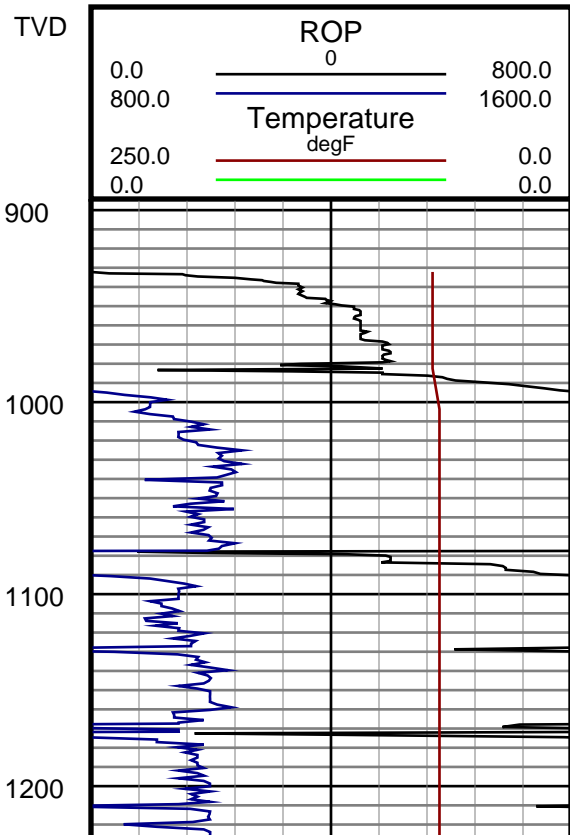
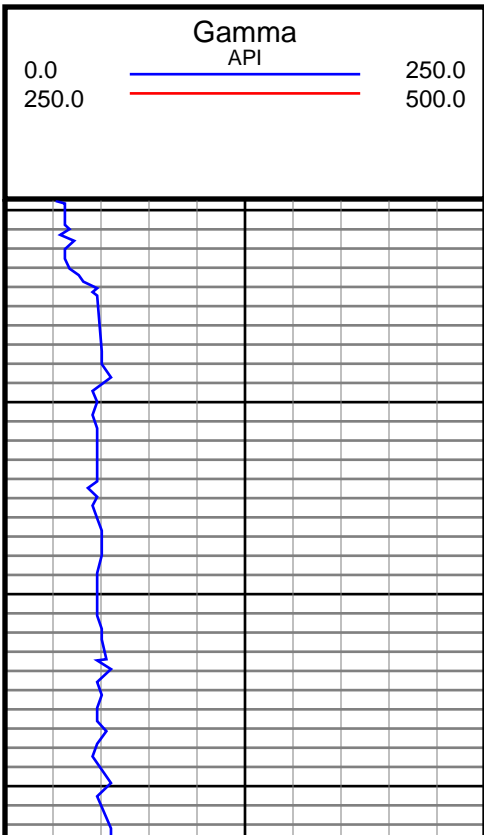
Casing Depth Size  
Surface: 924 9.625  
Intermediate: 7143 7.0

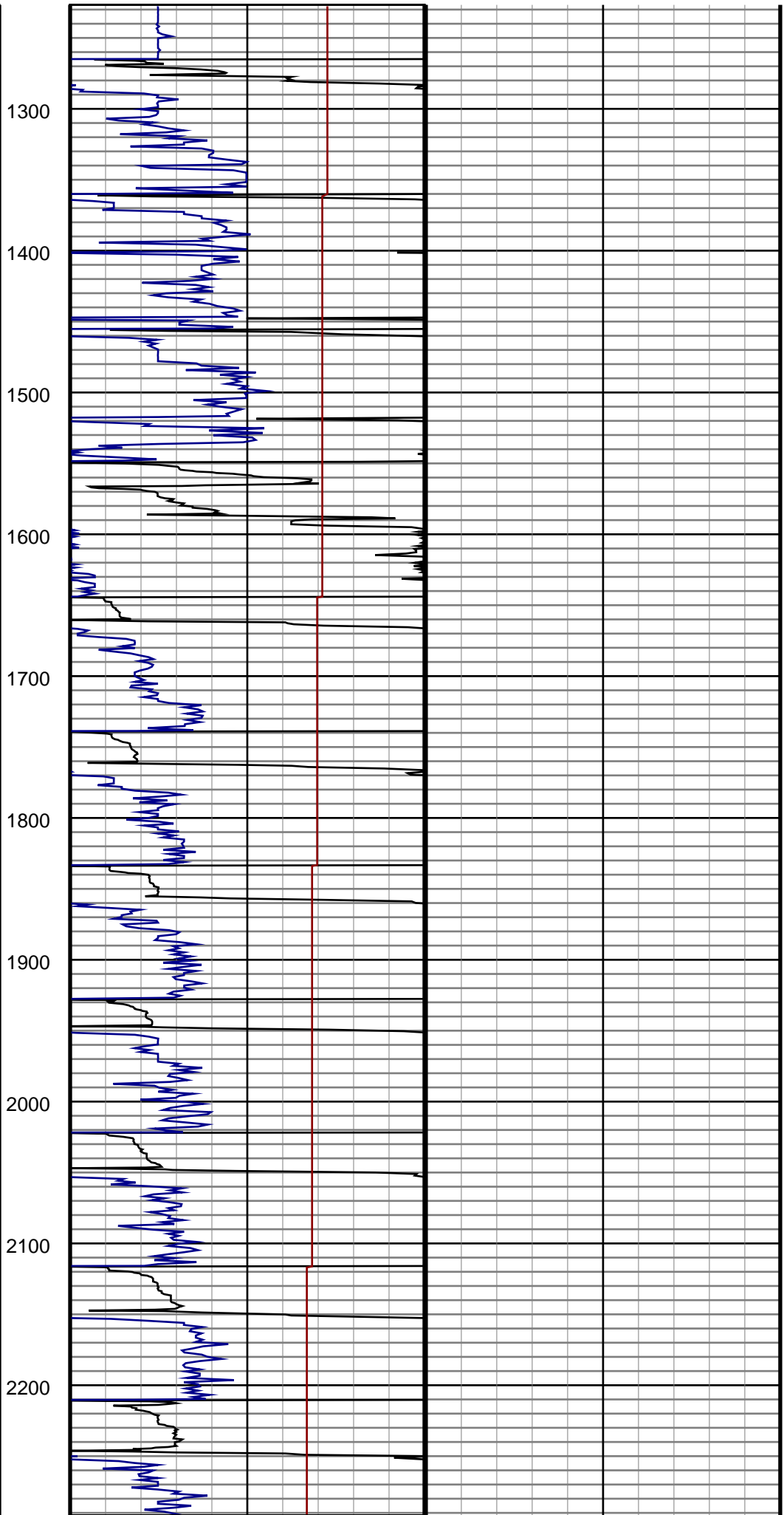
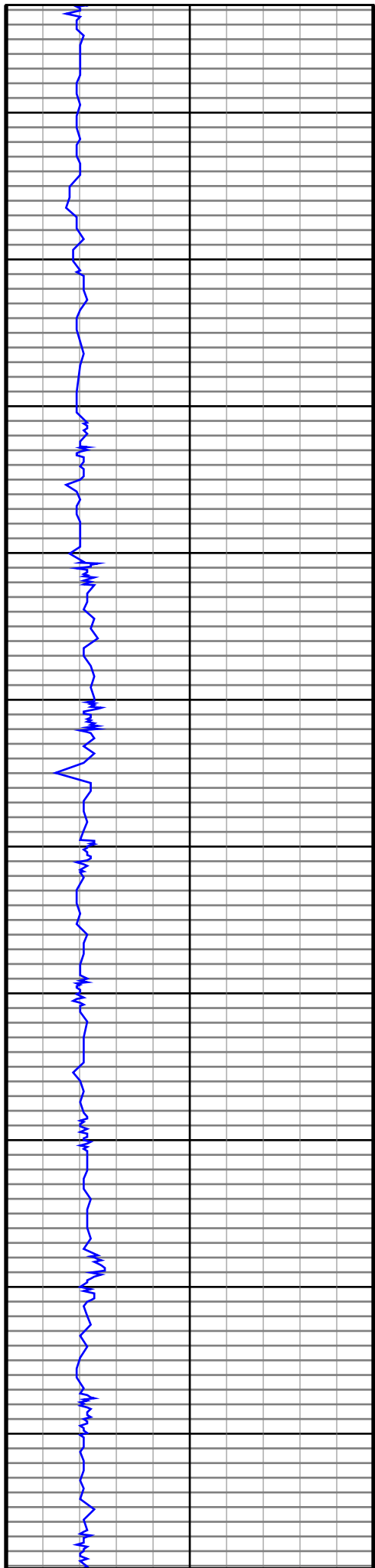
Mud Type: WATER BASE  
Density: 9.15  
Viscosity: 32  
Rm: Rmf: Rmc:

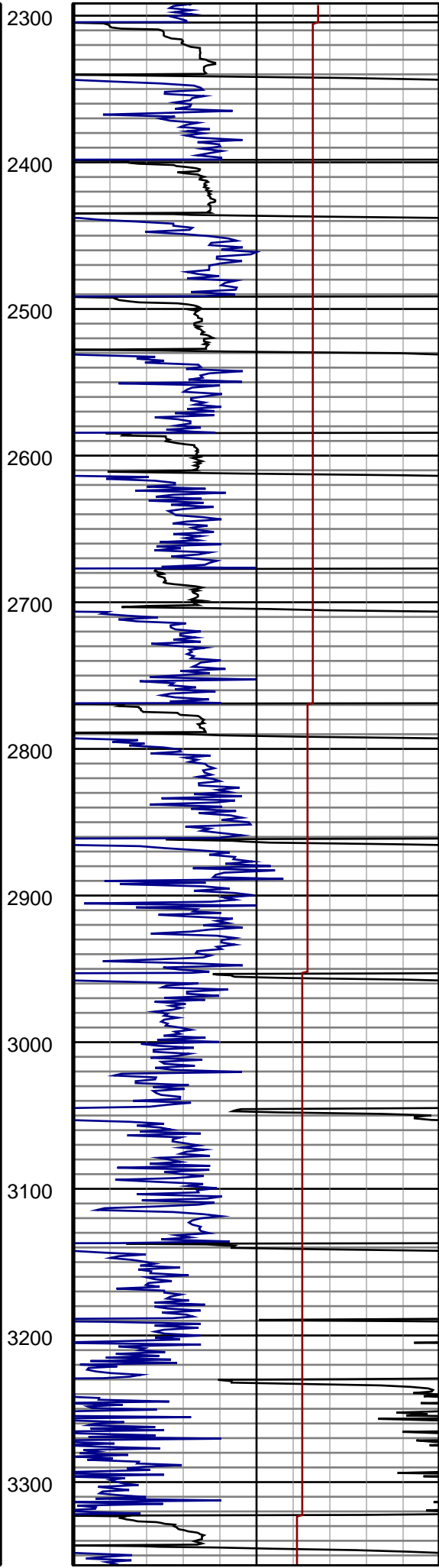
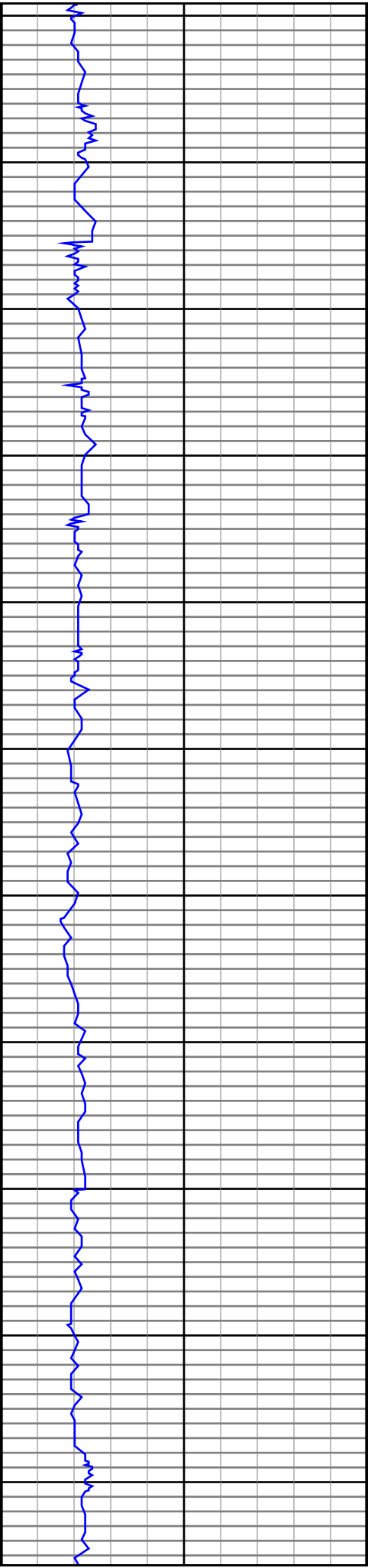
Elevations  
KB: 4727  
DF: 4751

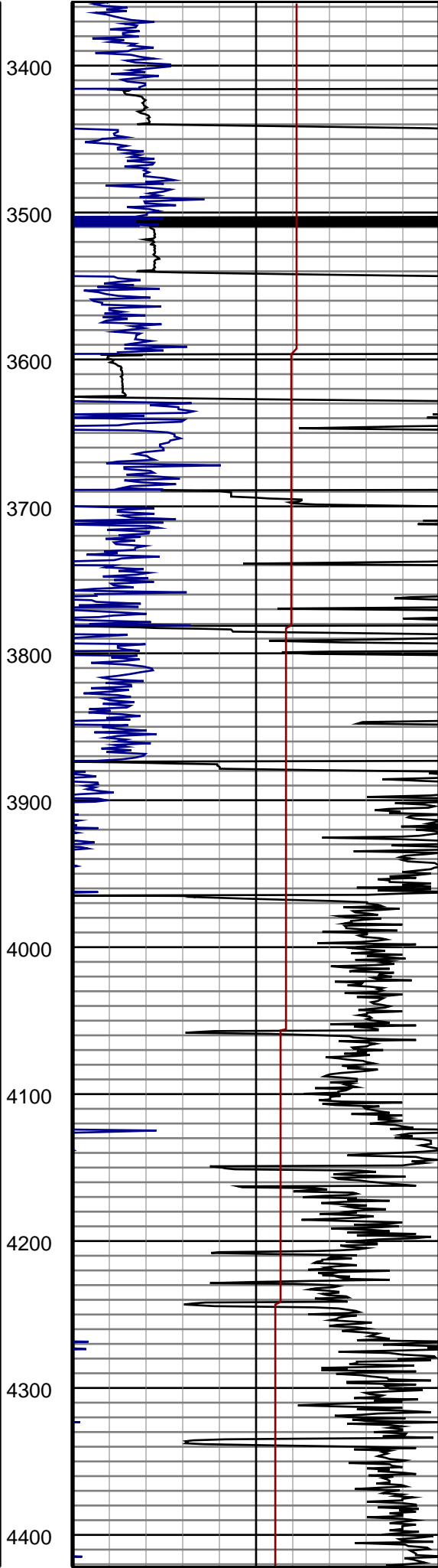
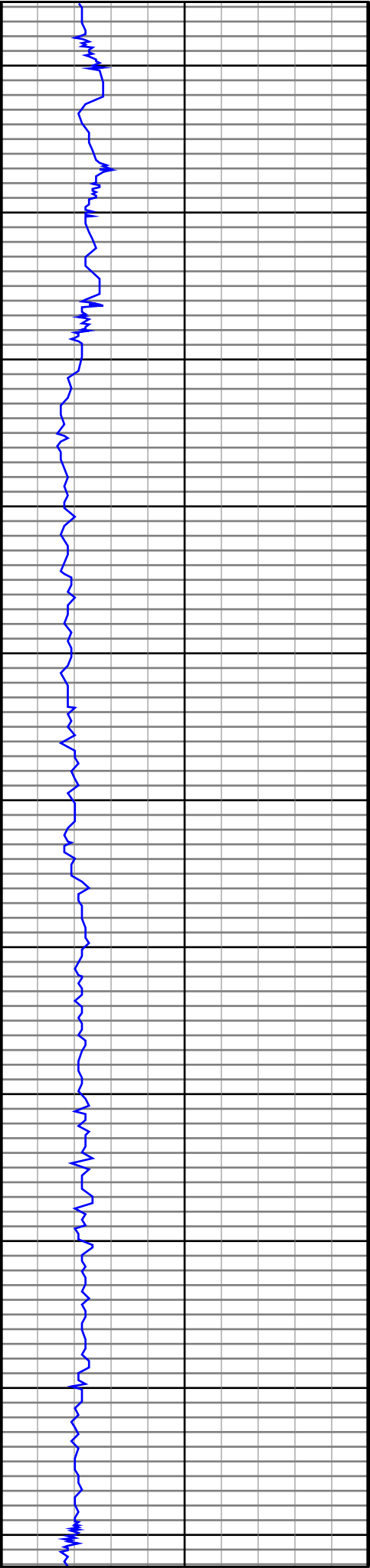
Run	Bit Size	Gamma	Offsets	Survey	Start	End	Start	End	Dates
1	8 3/4	37.00	52.00	932	6064	6725	1/4/2014	1/5/2014	
2	8 3/4	45.00	60.00	6064	6725	11003	1/5/2014	1/6/2014	
3	6 1/8	47.00	64.00	6725	11003		1/7/2014	1/9/2014	
4									
5									
6									
7									
8									
9									
10									

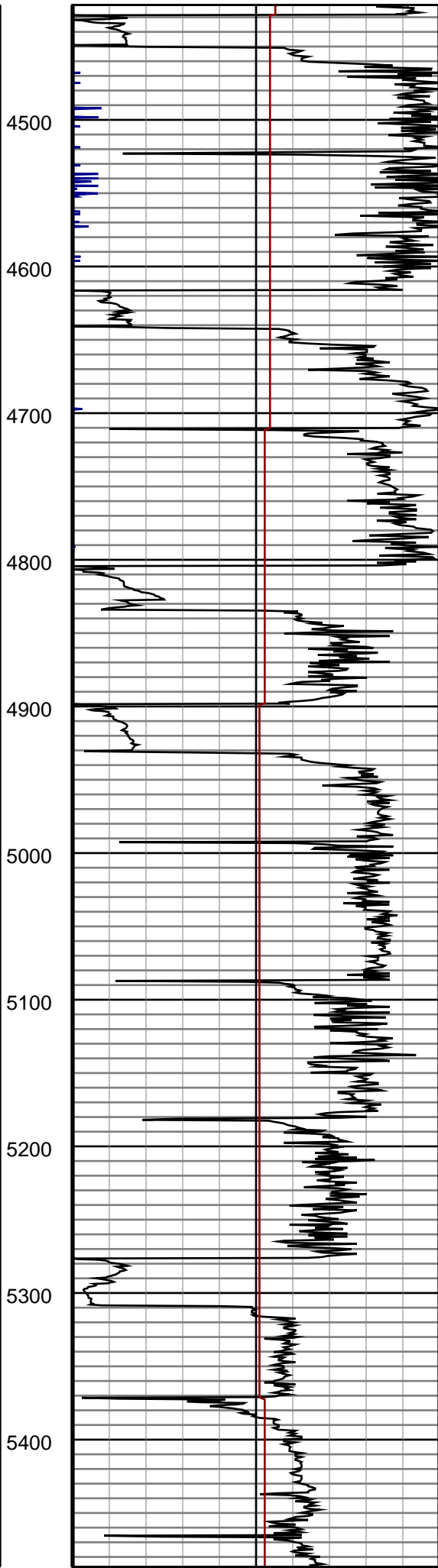
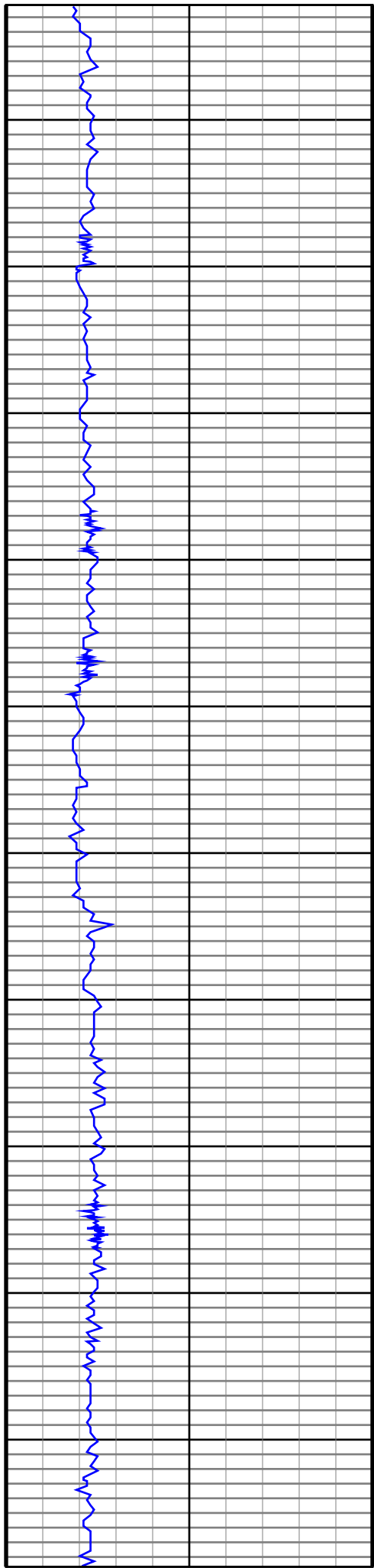
DRILTECH, LLC uses its best efforts to provide its customers with accurate information and interpretations in conjunction with services performed but will not be held liable or responsible for the accuracy of such information or interpretation.

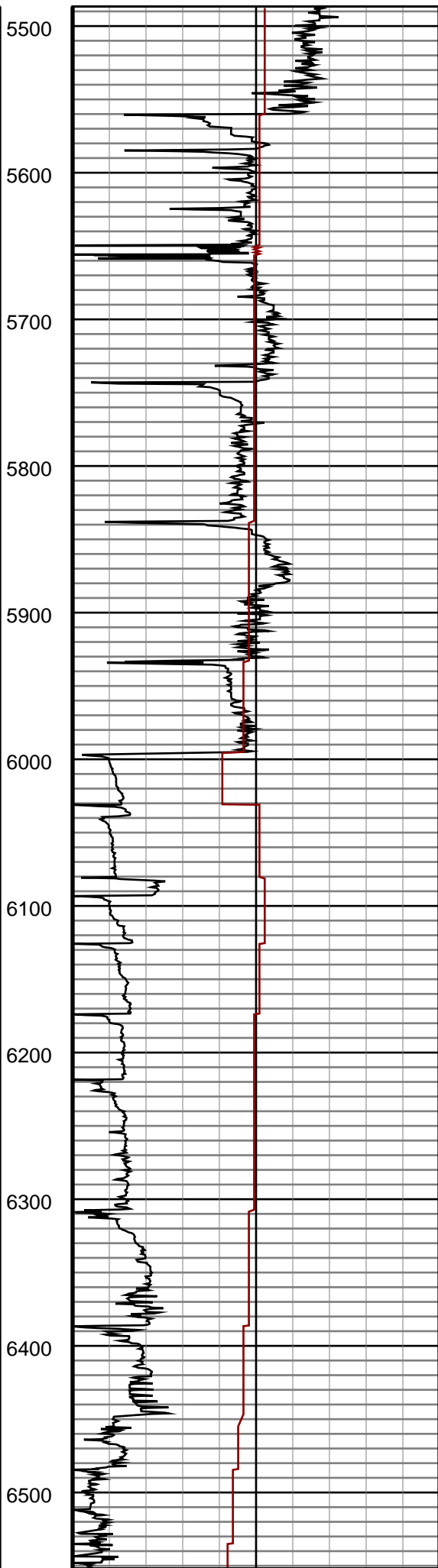
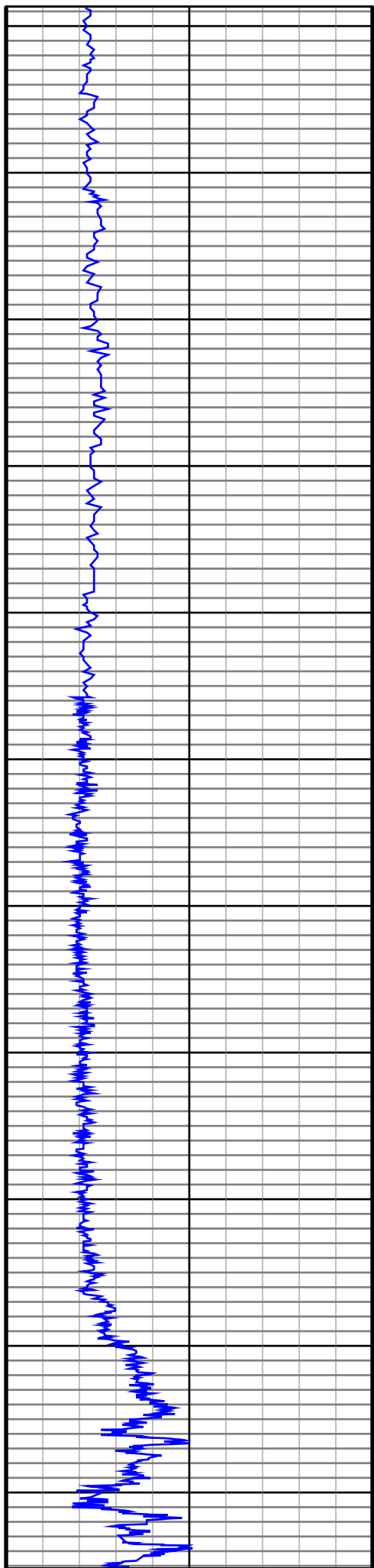


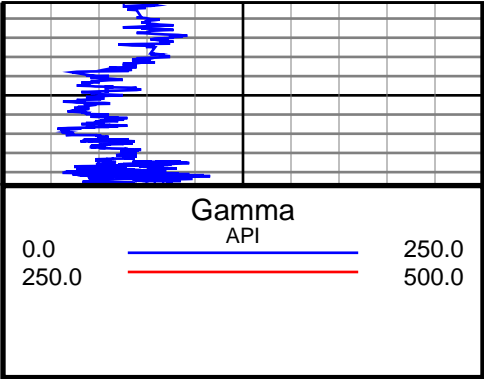












6600

