

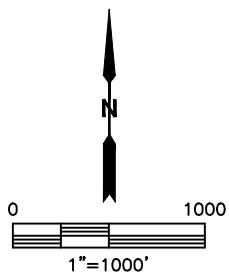
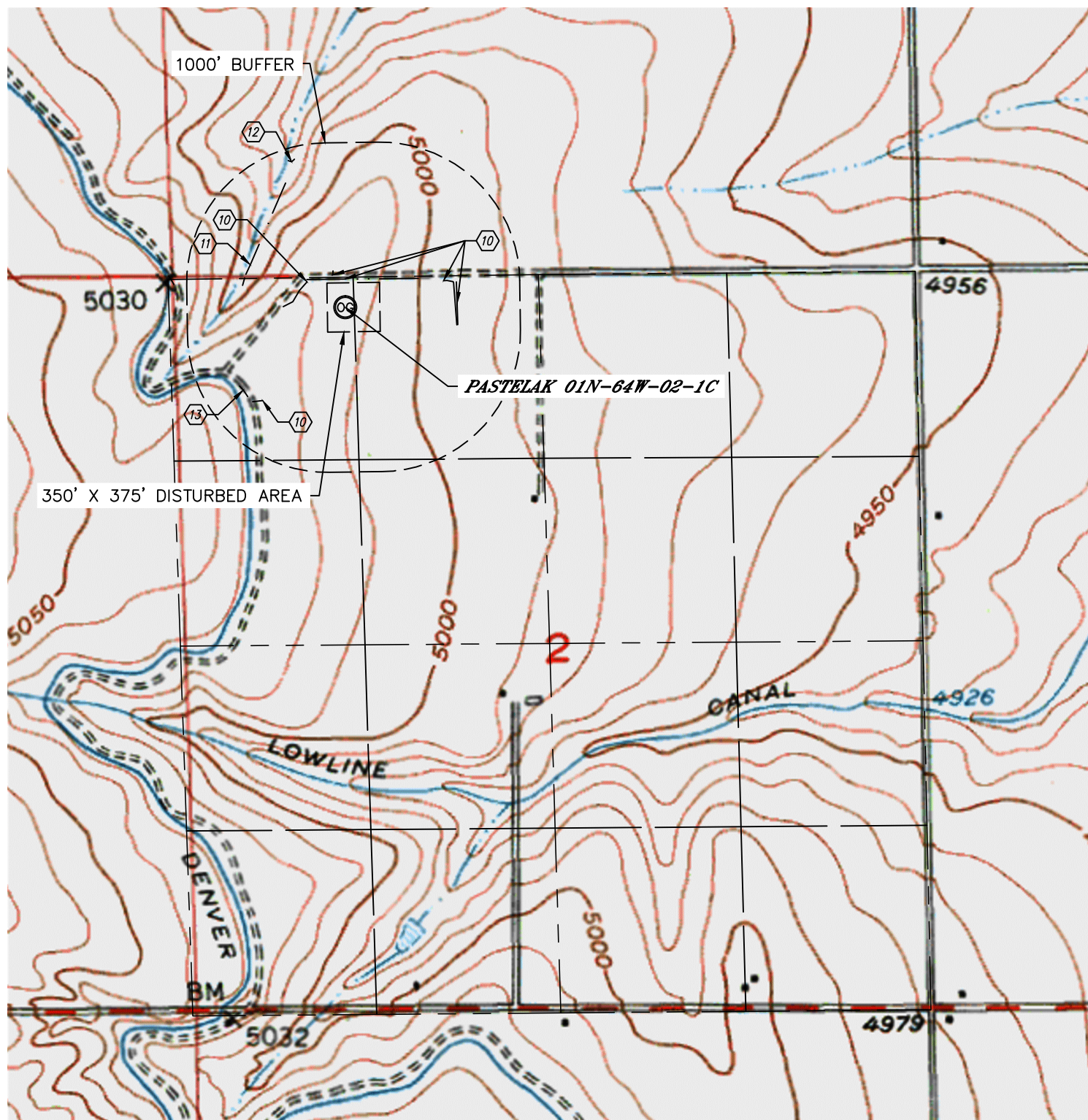


Lat40°, Inc. 1635 Foxtrail Drive, Suite 325 Loveland, CO 970-776-3321

HYDROLOGY MAP

PASTELAK 01N-64W-02 PAD

SECTION: 2
TOWNSHIP: 1N
RANGE: 64W



- ⑩ DITCH 201' N, 248' & 327' NW, 727' NE, 799' E, 887' SW
- ⑪ SWALE 742' NW
- ⑫ POND 1106' NW
- ⑬ DENVER HUDSON CANAL 936' SW

DATE: 7/10/2014
PROJECT#: 2014105