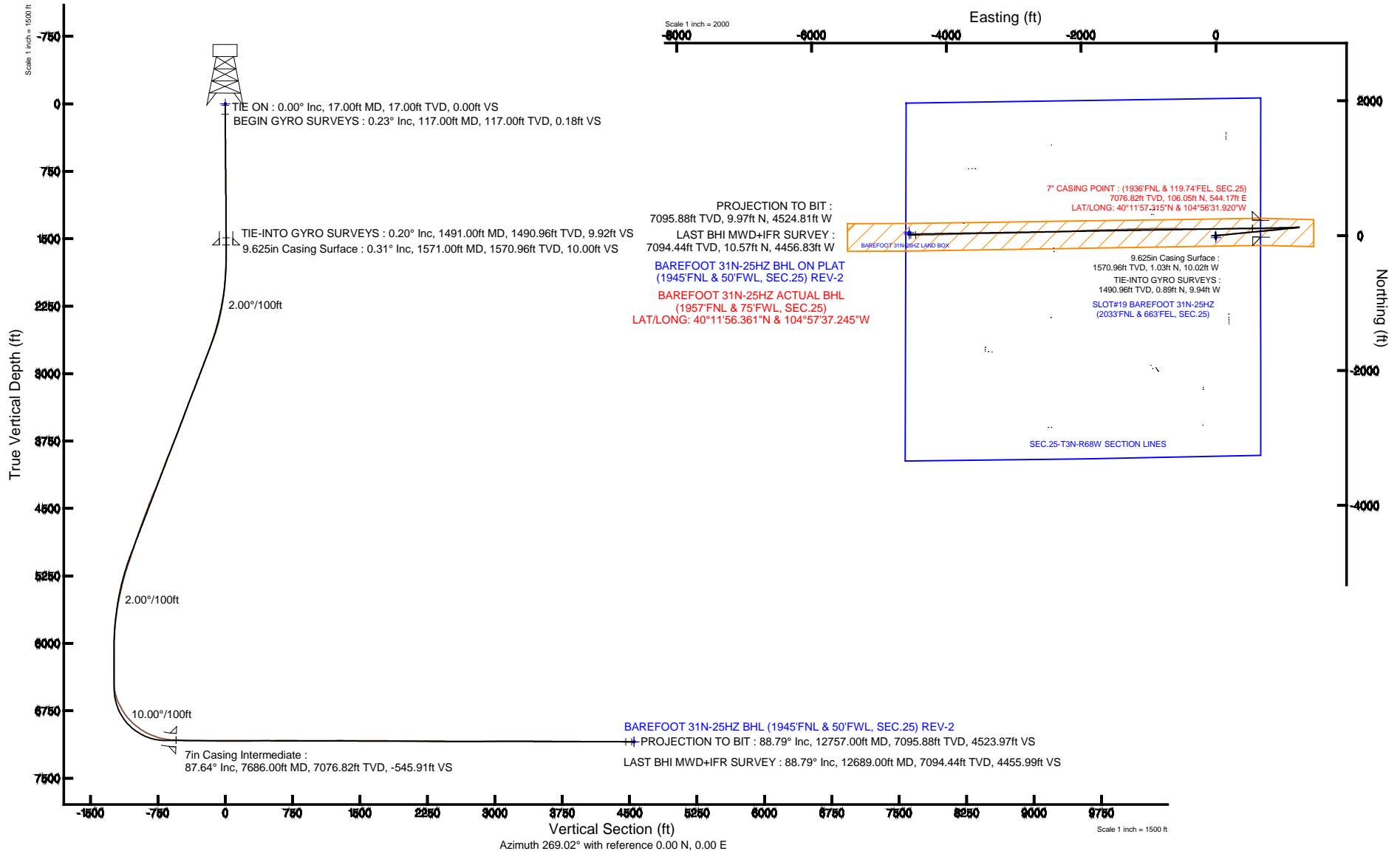


KERR-MCGEE OIL & GAS ONSHORE LP

Location: COLORADO Slot: SLOT#19 BAREFOOT 31N-25HZ (2033FNL & 663FEL, SEC.25)
 Field: WELD COUNTY (KERR MCGEE) Well: BAREFOOT 31N-25HZ
 Facility: SEC.25-T3N-R68W Wellbore: BAREFOOT 31N-25HZ PWB

Plot reference wellpath is BAREFOOT 31N-25HZ (REV-B.0) PWP

True vertical depths are referenced to XTREME 8 (17KB) (RKB)	Grid System: NAD83 / Lambert Colorado SP, Northern Zone (501), US feet
Measured depths are referenced to XTREME 8 (17KB) (RKB)	North Reference: True north
XTREME 8 (17KB) (RKB) to Mean Sea Level: 4904 feet	Scale: True distance
Mean Sea Level to Mud line (At Slot: SLOT#19 BAREFOOT 31N-25HZ (2033FNL & 663FEL, SEC.25)): 0 feet	Depths are in feet
Coordinates are in feet referenced to Slot	Created by: amarcor on 8/7/2014





Actual Wellpath Report

BAREFOOT 31N-25HZ AWP

Page 1 of 7



REFERENCE WELLPATH IDENTIFICATION			
Operator	KERR-MCGEE OIL & GAS ONSHORE LP	Slot	SLOT#19 BAREFOOT 31N-25HZ (2033'FNL & 663'FEL, SEC.25)
Area	COLORADO	Well	BAREFOOT 31N-25HZ
Field	WELD COUNTY (KERR MCGEE)	Wellbore	BAREFOOT 31N-25HZ AWB
Facility	SEC.25-T3N-R68W		

REPORT SETUP INFORMATION			
Projection System	NAD83 / Lambert Colorado SP, Northern Zone (501), US feet	Software System	WellArchitect® 4.0.0
North Reference	True	User	Amarcar
Scale	0.999957	Report Generated	8/7/2014 at 12:19:25 PM
Convergence at slot	n/a	Database/Source file	WellArchitectDB/BAREFOOT_31N-25HZ_AWB.xml

WELLPATH LOCATION						
	Local coordinates		Grid coordinates		Geographic coordinates	
	North[ft]	East[ft]	Easting[US ft]	Northing[US ft]	Latitude	Longitude
Slot Location	-406.88	866.53	3155268.58	1315811.37	40°11'56.267"N	104°56'38.933"W
Facility Reference Pt			3154399.57	1316212.82	40°12'00.288"N	104°56'50.100"W
Field Reference Pt			3197771.84	1268891.29	40°04'09.600"N	104°47'36.000"W

WELLPATH DATUM			
Calculation method	Minimum curvature	XTREME 8 (17'KB) (RKB) to Facility Vertical Datum	4904.00ft
Horizontal Reference Pt	Slot	XTREME 8 (17'KB) (RKB) to Mean Sea Level	4904.00ft
Vertical Reference Pt	XTREME 8 (17'KB) (RKB)	XTREME 8 (17'KB) (RKB) to Mud Line at Slot (SLOT#19 BAREFOOT 31N-25HZ (2033'FNL & 663'FEL, SEC.25))	4904.00ft
MD Reference Pt	XTREME 8 (17'KB) (RKB)	Section Origin	N 0.00, E 0.00 ft
Field Vertical Reference	Mean Sea Level	Section Azimuth	269.02°



Actual Wellpath Report

BAREFOOT 31N-25HZ AWP

Page 2 of 7



REFERENCE WELLPATH IDENTIFICATION

Operator	KERR-MCGEE OIL & GAS ONSHORE LP	Slot	SLOT#19 BAREFOOT 31N-25HZ (2033'FNL & 663'FEL, SEC.25)
Area	COLORADO	Well	BAREFOOT 31N-25HZ
Field	WELD COUNTY (KERR MCGEE)	Wellbore	BAREFOOT 31N-25HZ AWB
Facility	SEC.25-T3N-R68W		

WELLPATH DATA (156 stations) † = interpolated/extrapolated station

MD [ft]	Inclination [°]	Azimuth [°]	TVD [ft]	Vert Sect [ft]	North [ft]	East [ft]	Latitude	Longitude	DLS [°/100ft]	Comments
0.00†	0.000	295.240	0.00	0.00	0.00	0.00	40°11'56.267"N	104°56'38.933"W	0.00	
17.00	0.000	295.240	17.00	0.00	0.00	0.00	40°11'56.267"N	104°56'38.933"W	0.00	TIE ON
117.00	0.230	295.240	117.00	0.18	0.09	-0.18	40°11'56.268"N	104°56'38.935"W	0.23	BEGIN GYRO SURVEYS
217.00	0.360	292.920	217.00	0.65	0.29	-0.65	40°11'56.270"N	104°56'38.941"W	0.13	
317.00	0.440	280.560	317.00	1.31	0.49	-1.32	40°11'56.272"N	104°56'38.950"W	0.12	
417.00	0.390	280.430	416.99	2.02	0.62	-2.03	40°11'56.273"N	104°56'38.959"W	0.05	
517.00	0.530	298.650	516.99	2.76	0.90	-2.77	40°11'56.276"N	104°56'38.969"W	0.20	
617.00	0.460	274.380	616.99	3.56	1.15	-3.58	40°11'56.278"N	104°56'38.979"W	0.22	
717.00	0.590	285.440	716.98	4.45	1.32	-4.47	40°11'56.280"N	104°56'38.991"W	0.16	
817.00	0.530	278.100	816.98	5.40	1.52	-5.43	40°11'56.282"N	104°56'39.003"W	0.09	
917.00	0.510	266.450	916.97	6.30	1.56	-6.33	40°11'56.282"N	104°56'39.015"W	0.11	
1017.00	0.460	266.680	1016.97	7.15	1.51	-7.18	40°11'56.282"N	104°56'39.025"W	0.05	
1117.00	0.400	261.010	1116.97	7.90	1.43	-7.92	40°11'56.281"N	104°56'39.035"W	0.07	
1217.00	0.400	248.070	1216.96	8.57	1.25	-8.59	40°11'56.279"N	104°56'39.044"W	0.09	
1317.00	0.310	254.650	1316.96	9.16	1.05	-9.17	40°11'56.277"N	104°56'39.051"W	0.10	
1417.00	0.260	267.110	1416.96	9.64	0.96	-9.66	40°11'56.277"N	104°56'39.058"W	0.08	
1491.00	0.200	238.780	1490.96	9.92	0.89	-9.94	40°11'56.276"N	104°56'39.061"W	0.17	TIE-INTO GYRO SURVEYS
1693.00	1.020	23.230	1692.95	9.49	2.36	-9.53	40°11'56.290"N	104°56'39.056"W	0.59	
1785.00	2.260	58.080	1784.91	7.60	4.07	-7.67	40°11'56.307"N	104°56'39.032"W	1.67	
1876.00	3.050	60.950	1875.82	3.92	6.19	-4.03	40°11'56.328"N	104°56'38.985"W	0.88	
1968.00	4.010	75.530	1967.64	-1.36	8.19	1.22	40°11'56.348"N	104°56'38.917"W	1.42	
2059.00	5.470	83.610	2058.33	-8.78	9.46	8.62	40°11'56.361"N	104°56'38.822"W	1.76	
2151.00	7.940	87.230	2149.69	-19.50	10.26	19.32	40°11'56.368"N	104°56'38.684"W	2.72	
2243.00	9.610	89.470	2240.61	-33.53	10.64	33.35	40°11'56.372"N	104°56'38.503"W	1.85	
2334.00	11.840	91.910	2330.02	-50.45	10.40	50.28	40°11'56.370"N	104°56'38.285"W	2.50	
2426.00	14.290	89.280	2419.63	-71.23	10.22	71.07	40°11'56.368"N	104°56'38.017"W	2.74	
2518.00	17.330	88.170	2508.14	-96.29	10.80	96.12	40°11'56.374"N	104°56'37.694"W	3.32	
2609.00	19.490	85.630	2594.48	-125.00	12.39	124.81	40°11'56.389"N	104°56'37.325"W	2.53	
2701.00	21.210	84.650	2680.73	-156.92	15.12	156.68	40°11'56.416"N	104°56'36.914"W	1.91	
2793.00	21.380	82.260	2766.45	-190.17	18.93	189.87	40°11'56.454"N	104°56'36.486"W	0.96	
2885.00	20.470	81.500	2852.39	-222.77	23.56	222.40	40°11'56.500"N	104°56'36.067"W	1.03	
2976.00	20.520	84.070	2937.63	-254.44	27.56	254.00	40°11'56.539"N	104°56'35.660"W	0.99	
3068.00	20.460	84.840	3023.81	-286.54	30.67	286.05	40°11'56.570"N	104°56'35.247"W	0.30	
3160.00	21.140	83.880	3109.81	-319.10	33.89	318.56	40°11'56.602"N	104°56'34.828"W	0.83	
3252.00	21.920	84.720	3195.39	-352.75	37.24	352.16	40°11'56.635"N	104°56'34.395"W	0.91	
3343.00	21.880	85.470	3279.82	-386.61	40.14	385.97	40°11'56.664"N	104°56'33.959"W	0.31	
3429.00	19.700	83.680	3360.22	-417.04	43.00	416.36	40°11'56.692"N	104°56'33.567"W	2.64	
3514.00	19.990	83.280	3440.17	-445.76	46.28	445.03	40°11'56.724"N	104°56'33.198"W	0.38	
3599.00	20.770	84.520	3519.85	-475.24	49.42	474.46	40°11'56.755"N	104°56'32.819"W	1.05	
3685.00	20.900	85.620	3600.23	-505.75	52.05	504.93	40°11'56.781"N	104°56'32.426"W	0.48	
3770.00	21.440	87.130	3679.49	-536.42	53.98	535.57	40°11'56.800"N	104°56'32.031"W	0.90	
3855.00	22.910	85.950	3758.20	-568.46	55.93	567.59	40°11'56.820"N	104°56'31.618"W	1.81	
3940.00	22.630	85.300	3836.58	-601.30	58.44	600.39	40°11'56.844"N	104°56'31.196"W	0.44	
4025.00	22.330	85.310	3915.12	-633.74	61.10	632.78	40°11'56.871"N	104°56'30.778"W	0.35	
4111.00	21.250	84.270	3994.98	-665.57	63.99	664.57	40°11'56.899"N	104°56'30.369"W	1.33	



Actual Wellpath Report

BAREFOOT 31N-25HZ AWP

Page 3 of 7



REFERENCE WELLPATH IDENTIFICATION

Operator	KERR-MCGEE OIL & GAS ONSHORE LP	Slot	SLOT#19 BAREFOOT 31N-25HZ (2033'FNL & 663'FEL, SEC.25)
Area	COLORADO	Well	BAREFOOT 31N-25HZ
Field	WELD COUNTY (KERR MCGEE)	Wellbore	BAREFOOT 31N-25HZ AWB
Facility	SEC.25-T3N-R68W		

WELLPATH DATA (156 stations)

MD [ft]	Inclination [°]	Azimuth [°]	TVD [ft]	Vert Sect [ft]	North [ft]	East [ft]	Latitude	Longitude	DLS [°/100ft]	Comments
4196.00	20.340	83.380	4074.44	-695.63	67.23	694.57	40°11'56.931"N	104°56'29.982"W	1.13	
4281.00	20.890	83.580	4153.99	-725.41	70.63	724.31	40°11'56.965"N	104°56'29.599"W	0.65	
4366.00	22.300	83.120	4233.03	-756.54	74.25	755.38	40°11'57.001"N	104°56'29.198"W	1.67	
4452.00	22.580	86.390	4312.52	-789.27	77.25	788.06	40°11'57.030"N	104°56'28.777"W	1.49	
4537.00	22.000	86.690	4391.17	-821.48	79.19	820.24	40°11'57.049"N	104°56'28.362"W	0.70	
4622.00	20.720	86.420	4470.33	-852.41	81.05	851.14	40°11'57.068"N	104°56'27.964"W	1.51	
4707.00	20.420	83.780	4549.91	-882.20	83.60	880.89	40°11'57.093"N	104°56'27.581"W	1.15	
4793.00	21.030	81.930	4630.34	-912.45	87.39	911.08	40°11'57.130"N	104°56'27.192"W	1.04	
4878.00	20.490	81.940	4709.82	-942.35	91.62	940.91	40°11'57.172"N	104°56'26.807"W	0.64	
4963.00	18.930	82.090	4789.84	-970.80	95.60	969.30	40°11'57.212"N	104°56'26.441"W	1.84	
5048.00	17.700	81.880	4870.53	-997.31	99.32	995.75	40°11'57.248"N	104°56'26.101"W	1.45	
5133.00	17.780	79.390	4951.49	-1022.93	103.54	1021.30	40°11'57.290"N	104°56'25.771"W	0.90	
5218.00	18.660	83.300	5032.23	-1049.25	107.51	1047.56	40°11'57.329"N	104°56'25.433"W	1.77	
5304.00	19.130	83.250	5113.60	-1076.96	110.78	1075.22	40°11'57.361"N	104°56'25.076"W	0.55	
5389.00	17.320	83.070	5194.33	-1103.41	113.94	1101.61	40°11'57.393"N	104°56'24.736"W	2.13	
5476.00	15.610	82.250	5277.76	-1127.91	117.08	1126.07	40°11'57.424"N	104°56'24.421"W	1.98	
5561.00	13.710	80.330	5359.99	-1149.23	120.32	1147.33	40°11'57.456"N	104°56'24.147"W	2.31	
5647.00	11.980	78.680	5443.84	-1168.09	123.78	1166.13	40°11'57.490"N	104°56'23.905"W	2.06	
5732.00	11.420	83.040	5527.07	-1185.13	126.53	1183.14	40°11'57.517"N	104°56'23.686"W	1.23	
5817.00	9.300	86.840	5610.68	-1200.37	127.93	1198.35	40°11'57.531"N	104°56'23.490"W	2.62	
5902.00	8.260	86.770	5694.68	-1213.33	128.65	1211.30	40°11'57.538"N	104°56'23.323"W	1.22	
5987.00	6.170	87.070	5779.01	-1224.00	129.23	1221.96	40°11'57.544"N	104°56'23.185"W	2.46	
6073.00	4.420	91.930	5864.64	-1231.93	129.35	1229.89	40°11'57.545"N	104°56'23.083"W	2.10	
6158.00	2.190	89.960	5949.49	-1236.83	129.25	1234.79	40°11'57.544"N	104°56'23.020"W	2.63	
6243.00	0.480	127.100	6034.47	-1238.73	129.03	1236.70	40°11'57.542"N	104°56'22.995"W	2.15	
6329.00	0.520	152.770	6120.46	-1239.19	128.47	1237.16	40°11'57.536"N	104°56'22.989"W	0.26	
6414.00	0.640	179.200	6205.46	-1239.36	127.65	1237.35	40°11'57.528"N	104°56'22.987"W	0.34	
6585.00	0.720	208.320	6376.45	-1238.83	125.75	1236.85	40°11'57.509"N	104°56'22.993"W	0.20	
6670.00	2.110	232.200	6461.42	-1237.31	124.32	1235.36	40°11'57.495"N	104°56'23.013"W	1.74	
6712.00	7.220	257.790	6503.27	-1234.10	123.29	1232.17	40°11'57.485"N	104°56'23.054"W	12.84	
6755.00	12.190	261.180	6545.64	-1226.95	122.02	1225.04	40°11'57.472"N	104°56'23.146"W	11.63	
6798.00	17.250	261.440	6587.22	-1216.13	120.37	1214.24	40°11'57.456"N	104°56'23.285"W	11.77	
6840.00	21.690	262.950	6626.80	-1202.23	118.49	1200.37	40°11'57.438"N	104°56'23.464"W	10.64	
6883.00	25.720	265.210	6666.17	-1185.01	116.74	1183.18	40°11'57.420"N	104°56'23.685"W	9.61	
6925.00	27.930	266.020	6703.65	-1166.09	115.29	1164.28	40°11'57.406"N	104°56'23.929"W	5.33	
6968.00	30.280	269.390	6741.22	-1145.19	114.48	1143.39	40°11'57.398"N	104°56'24.198"W	6.66	
7011.00	33.890	270.750	6777.64	-1122.36	114.52	1120.56	40°11'57.398"N	104°56'24.492"W	8.56	
7053.00	38.090	270.950	6811.62	-1097.69	114.89	1095.88	40°11'57.402"N	104°56'24.810"W	10.00	
7096.00	42.330	270.670	6844.45	-1069.95	115.28	1068.13	40°11'57.406"N	104°56'25.168"W	9.87	
7139.00	45.690	269.600	6875.37	-1040.09	115.34	1038.26	40°11'57.407"N	104°56'25.553"W	8.00	
7181.00	49.240	267.820	6903.76	-1009.15	114.63	1007.33	40°11'57.400"N	104°56'25.951"W	9.01	
7224.00	52.600	267.550	6930.87	-975.78	113.28	973.98	40°11'57.386"N	104°56'26.381"W	7.83	
7266.00	56.020	267.350	6955.37	-941.69	111.76	939.91	40°11'57.371"N	104°56'26.820"W	8.15	
7310.00	59.160	266.660	6978.95	-904.57	109.82	902.82	40°11'57.352"N	104°56'27.298"W	7.26	
7354.00	63.420	266.830	7000.08	-866.02	107.63	864.30	40°11'57.330"N	104°56'27.795"W	9.69	



Actual Wellpath Report

BAREFOOT 31N-25HZ AWP

Page 4 of 7



REFERENCE WELLPATH IDENTIFICATION

Operator	KERR-MCGEE OIL & GAS ONSHORE LP	Slot	SLOT#19 BAREFOOT 31N-25HZ (2033'FNL & 663'FEL, SEC.25)
Area	COLORADO	Well	BAREFOOT 31N-25HZ
Field	WELD COUNTY (KERR MCGEE)	Wellbore	BAREFOOT 31N-25HZ AWP
Facility	SEC.25-T3N-R68W		

WELLPATH DATA (156 stations) † = interpolated/extrapolated station

MD [ft]	Inclination [°]	Azimuth [°]	TVD [ft]	Vert Sect [ft]	North [ft]	East [ft]	Latitude	Longitude	DLS [°/100ft]	Comments
7397.00	67.380	267.200	7017.97	-826.95	105.59	825.26	40°11'57.310"N	104°56'28.298"W	9.24	
7441.00	70.310	268.540	7033.85	-785.93	104.07	784.26	40°11'57.295"N	104°56'28.826"W	7.24	
7485.00	73.650	269.740	7047.46	-744.10	103.45	742.43	40°11'57.289"N	104°56'29.365"W	8.02	
7529.00	77.450	270.650	7058.44	-701.51	103.60	699.83	40°11'57.291"N	104°56'29.914"W	8.87	
7573.00	80.910	271.690	7066.70	-658.33	104.48	656.63	40°11'57.299"N	104°56'30.471"W	8.20	
7633.00	85.650	270.900	7073.72	-598.80	105.83	597.07	40°11'57.313"N	104°56'31.238"W	8.01	
7686.00†	87.638	269.592	7076.82	-545.91	106.05	544.17	40°11'57.315"N	104°56'31.920"W	4.49	7" CASING POINT
7734.00	89.440	268.410	7078.04	-497.93	105.22	496.20	40°11'57.307"N	104°56'32.538"W	4.49	
7822.00	89.230	269.540	7079.07	-409.94	103.64	408.22	40°11'57.291"N	104°56'33.672"W	1.31	
7907.00	88.790	269.750	7080.53	-324.95	103.11	323.23	40°11'57.286"N	104°56'34.767"W	0.57	
7992.00	87.900	269.960	7082.99	-240.00	102.90	238.27	40°11'57.284"N	104°56'35.862"W	1.08	
8079.00	88.430	269.740	7085.78	-153.05	102.67	151.31	40°11'57.282"N	104°56'36.983"W	0.66	
8169.00	89.690	269.590	7087.25	-63.07	102.15	61.33	40°11'57.276"N	104°56'38.143"W	1.41	
8256.00	89.350	269.240	7087.98	23.92	101.26	-25.66	40°11'57.268"N	104°56'39.264"W	0.56	
8341.00	89.260	269.000	7089.01	108.91	99.95	-110.65	40°11'57.255"N	104°56'40.359"W	0.30	
8426.00	91.100	269.530	7088.74	193.91	98.86	-195.64	40°11'57.244"N	104°56'41.454"W	2.25	
8511.00	91.200	270.130	7087.04	278.88	98.61	-280.62	40°11'57.241"N	104°56'42.549"W	0.72	
8596.00	91.380	270.940	7085.12	363.83	99.40	-365.59	40°11'57.249"N	104°56'43.644"W	0.98	
8681.00	91.130	271.210	7083.26	448.76	101.00	-450.56	40°11'57.265"N	104°56'44.739"W	0.43	
8766.00	91.040	271.030	7081.65	533.68	102.66	-535.52	40°11'57.281"N	104°56'45.834"W	0.24	
8851.00	90.580	270.820	7080.45	618.63	104.03	-620.50	40°11'57.295"N	104°56'46.930"W	0.59	
8937.00	89.630	270.410	7080.29	704.59	104.95	-706.50	40°11'57.304"N	104°56'48.038"W	1.20	
9022.00	89.040	269.740	7081.28	789.57	105.06	-791.49	40°11'57.305"N	104°56'49.133"W	1.05	
9109.00	89.750	269.470	7082.20	876.56	104.47	-878.48	40°11'57.299"N	104°56'50.254"W	0.87	
9198.00	90.000	268.640	7082.39	965.56	103.00	-967.47	40°11'57.285"N	104°56'51.401"W	0.97	
9283.00	90.400	269.870	7082.10	1050.56	101.89	-1052.46	40°11'57.274"N	104°56'52.496"W	1.52	
9369.00	89.960	268.980	7081.83	1136.55	101.03	-1138.46	40°11'57.265"N	104°56'53.604"W	1.15	
9454.00	90.400	268.800	7081.56	1221.55	99.38	-1223.44	40°11'57.249"N	104°56'54.700"W	0.56	
9539.00	89.720	267.030	7081.47	1306.53	96.29	-1308.38	40°11'57.218"N	104°56'55.794"W	2.23	
9624.00	90.000	267.810	7081.68	1391.50	92.46	-1393.29	40°11'57.180"N	104°56'56.889"W	0.97	
9709.00	89.660	268.200	7081.93	1476.48	89.50	-1478.24	40°11'57.151"N	104°56'57.983"W	0.61	
9794.00	89.870	268.440	7082.28	1561.48	87.01	-1563.20	40°11'57.126"N	104°56'59.078"W	0.38	
9963.00	89.380	269.170	7083.39	1730.47	83.49	-1732.16	40°11'57.091"N	104°57'01.256"W	0.52	
10048.00	89.530	268.690	7084.19	1815.47	81.90	-1817.14	40°11'57.076"N	104°57'02.351"W	0.59	
10133.00	88.580	267.600	7085.60	1900.44	79.15	-1902.08	40°11'57.048"N	104°57'03.445"W	1.70	
10219.00	88.760	266.830	7087.59	1986.38	74.97	-1987.96	40°11'57.007"N	104°57'04.552"W	0.92	
10306.00	89.690	267.430	7088.77	2073.32	70.62	-2074.84	40°11'56.964"N	104°57'05.672"W	1.27	
10391.00	88.830	267.040	7089.87	2158.27	66.52	-2159.73	40°11'56.923"N	104°57'06.766"W	1.11	
10476.00	88.980	267.700	7091.49	2243.22	62.62	-2244.63	40°11'56.885"N	104°57'07.860"W	0.80	
10561.00	89.690	267.970	7092.48	2328.20	59.41	-2329.56	40°11'56.853"N	104°57'08.954"W	0.89	
10647.00	89.720	267.990	7092.92	2414.18	56.38	-2415.51	40°11'56.823"N	104°57'10.062"W	0.04	
10732.00	90.210	269.170	7092.97	2499.18	54.27	-2500.48	40°11'56.802"N	104°57'11.157"W	1.50	
10817.00	89.590	268.630	7093.12	2584.18	52.64	-2585.46	40°11'56.786"N	104°57'12.252"W	0.97	
10902.00	89.440	268.100	7093.84	2669.17	50.21	-2670.42	40°11'56.762"N	104°57'13.347"W	0.65	
10987.00	90.330	268.030	7094.01	2754.15	47.34	-2755.37	40°11'56.733"N	104°57'14.442"W	1.05	



Actual Wellpath Report

BAREFOOT 31N-25HZ AWP

Page 5 of 7



REFERENCE WELLPATH IDENTIFICATION

Operator	KERR-MCGEE OIL & GAS ONSHORE LP	Slot	SLOT#19 BAREFOOT 31N-25HZ (2033'FNL & 663'FEL, SEC.25)
Area	COLORADO	Well	BAREFOOT 31N-25HZ
Field	WELD COUNTY (KERR MCGEE)	Wellbore	BAREFOOT 31N-25HZ AWB
Facility	SEC.25-T3N-R68W		

WELLPATH DATA (156 stations)

MD [ft]	Inclination [°]	Azimuth [°]	TVD [ft]	Vert Sect [ft]	North [ft]	East [ft]	Latitude	Longitude	DLS [°/100ft]	Comments
11072.00	91.320	268.550	7092.79	2839.14	44.81	-2840.33	40°11'56.708"N	104°57'15.537"W	1.32	
11158.00	91.200	268.740	7090.90	2925.11	42.77	-2926.28	40°11'56.688"N	104°57'16.644"W	0.26	
11243.00	90.860	268.710	7089.37	3010.10	40.88	-3011.25	40°11'56.669"N	104°57'17.739"W	0.40	
11328.00	91.100	269.090	7087.91	3095.09	39.25	-3096.22	40°11'56.653"N	104°57'18.834"W	0.53	
11413.00	89.560	268.800	7087.42	3180.08	37.69	-3181.20	40°11'56.637"N	104°57'19.930"W	1.84	
11498.00	89.040	269.440	7088.46	3265.08	36.38	-3266.18	40°11'56.624"N	104°57'21.025"W	0.97	
11584.00	90.270	269.670	7088.98	3351.07	35.71	-3352.18	40°11'56.618"N	104°57'22.133"W	1.46	
11669.00	90.090	268.980	7088.71	3436.07	34.71	-3437.17	40°11'56.608"N	104°57'23.228"W	0.84	
11756.00	90.330	268.390	7088.39	3523.06	32.71	-3524.14	40°11'56.588"N	104°57'24.349"W	0.73	
11841.00	88.890	268.320	7088.97	3608.05	30.27	-3609.11	40°11'56.564"N	104°57'25.444"W	1.70	
11926.00	89.720	268.130	7090.00	3693.04	27.64	-3694.06	40°11'56.537"N	104°57'26.539"W	1.00	
12012.00	89.780	268.440	7090.38	3779.03	25.07	-3780.02	40°11'56.512"N	104°57'27.647"W	0.37	
12097.00	89.410	268.630	7090.98	3864.03	22.89	-3864.99	40°11'56.490"N	104°57'28.742"W	0.49	
12182.00	89.350	268.590	7091.90	3949.02	20.83	-3949.96	40°11'56.470"N	104°57'29.837"W	0.08	
12267.00	89.720	268.810	7092.59	4034.01	18.90	-4034.93	40°11'56.451"N	104°57'30.932"W	0.51	
12352.00	89.690	268.290	7093.03	4119.01	16.75	-4119.90	40°11'56.429"N	104°57'32.027"W	0.61	
12437.00	90.150	268.500	7093.15	4204.00	14.37	-4204.87	40°11'56.406"N	104°57'33.122"W	0.59	
12523.00	89.930	269.110	7093.09	4290.00	12.58	-4290.85	40°11'56.388"N	104°57'34.230"W	0.75	
12608.00	89.690	269.310	7093.37	4375.00	11.41	-4375.84	40°11'56.376"N	104°57'35.325"W	0.37	
12689.00	88.790	269.500	7094.44	4455.99	10.57	-4456.83	40°11'56.367"N	104°57'36.369"W	1.14	LAST BHI MWD+IFR SURVEY
12757.00	88.790	269.500	7095.88	4523.97	9.97	-4524.81	40°11'56.361"N	104°57'37.245"W	0.00	PROJECTION TO BIT

HOLE & CASING SECTIONS - Ref Wellbore: BAREFOOT 31N-25HZ AWB

Ref Wellpath: BAREFOOT 31N-25HZ AWP

String/Diameter	Start MD [ft]	End MD [ft]	Interval [ft]	Start TVD [ft]	End TVD [ft]	Start N/S [ft]	Start E/W [ft]	End N/S [ft]	End E/W [ft]
13.5in Open Hole	17.00	1581.00	1564.00	17.00	1580.96	0.00	0.00	1.09	-10.01
9.625in Casing Surface	17.00	1571.00	1554.00	17.00	1570.96	0.00	0.00	1.03	-10.02
8.75in Open Hole	1581.00	7697.00	6116.00	1580.96	7077.23	1.09	-10.01	105.95	533.18
7in Casing Intermediate	17.00	7686.00	7669.00	17.00	7076.82	0.00	0.00	106.05	544.17
6.125in Open Hole	7697.00	12757.00	5060.00	7077.23	7095.88	105.95	533.18	9.97	-4524.81



Actual Wellpath Report

BAREFOOT 31N-25HZ AWP

Page 6 of 7



REFERENCE WELLPATH IDENTIFICATION			
Operator	KERR-MCGEE OIL & GAS ONSHORE LP	Slot	SLOT#19 BAREFOOT 31N-25HZ (2033'FNL & 663'FEL, SEC.25)
Area	COLORADO	Well	BAREFOOT 31N-25HZ
Field	WELD COUNTY (KERR MCGEE)	Wellbore	BAREFOOT 31N-25HZ AWB
Facility	SEC.25-T3N-R68W		

TARGETS									
Name	MD [ft]	TVD [ft]	North [ft]	East [ft]	Grid East [US ft]	Grid North [US ft]	Latitude	Longitude	Shape
SEC.25-T3N-R68W SECTION LINES		0.00	-29.85	0.00	3155268.77	1315781.51	40°11'55.972"N	104°56'38.933"W	polygon
BAREFOOT 31N-25HZ BHL (1945'FNL & 50'FWL, SEC.25) REV-2		7095.00	22.76	-4550.57	3150718.16	1315805.60	40°11'56.488"N	104°57'37.577"W	point
BAREFOOT 31N-25HZ BHL ON PLAT (1920'FNL & 50'FWL, SEC.25) REV-1		7095.00	47.76	-4550.57	3150718.01	1315830.59	40°11'56.735"N	104°57'37.577"W	point
BAREFOOT 31N-25HZ LAND BOX		7095.00	0.00	0.00	3155268.58	1315811.36	40°11'56.267"N	104°56'38.933"W	polygon

WELLPATH COMPOSITION - Ref Wellbore: BAREFOOT 31N-25HZ AWB					Ref Wellpath: BAREFOOT 31N-25HZ AWP	
Start MD [ft]	End MD [ft]	Positional Uncertainty Model	Log Name/Comment		Wellbore	
17.00	1491.00	Generic gyro - continuous (Standard)	MS ENERGY GYRO SURVEYS <117-1491>		BAREFOOT 31N-25HZ AWB	
1491.00	7633.00	NaviTrak (IFR)	BHI MWD+IFR SURVEYS 8 3/4" HOLE <1693-7633>		BAREFOOT 31N-25HZ AWB	
7633.00	12689.00	NaviTrak (IFR)	BHI MWD+IFR SURVEYS 6 1/8" HOLE <7734-12689>		BAREFOOT 31N-25HZ AWB	
12689.00	12757.00	Blind Drilling (std)	Projection to bit		BAREFOOT 31N-25HZ AWB	



Actual Wellpath Report

BAREFOOT 31N-25HZ AWP

Page 7 of 7



REFERENCE WELLPATH IDENTIFICATION

Operator	KERR-MCGEE OIL & GAS ONSHORE LP	Slot	SLOT#19 BAREFOOT 31N-25HZ (2033'FNL & 663'FEL, SEC.25)
Area	COLORADO	Well	BAREFOOT 31N-25HZ
Field	WELD COUNTY (KERR MCGEE)	Wellbore	BAREFOOT 31N-25HZ AWB
Facility	SEC.25-T3N-R68W		

WELLPATH COMMENTS

MD [ft]	Inclination [°]	Azimuth [°]	TVD [ft]	Comment
17.00	0.000	295.240	17.00	TIE ON
117.00	0.230	295.240	117.00	BEGIN GYRO SURVEYS
1491.00	0.200	238.780	1490.96	TIE-INTO GYRO SURVEYS
7686.00	87.638	269.592	7076.82	7" CASING POINT
12689.00	88.790	269.500	7094.44	LAST BHI MWD+IFR SURVEY
12757.00	88.790	269.500	7095.88	PROJECTION TO BIT