

HALLIBURTON

iCem[®] Service

Post Job Report

ANADARKO PETROLEUM CORP - EBUS

For: Alan Seacrest

Date: Sunday, May 11, 2014

32C-25HZ

Barefoot 32C-25HZ

Anadarko, Barefoot 32C-25HZ

Sincerely,
KC Smith

Table of Contents

1.1	Executive Summary	3
1.2	Cementing Job Summary	4
27.1	Planned Pumping Schedule	6
27.2	Job Overview	6
27.3	Job Event Log	9
28.0 Attachments		12
28.1	Anadarko, Barefoot 32C-25HZ, Surface.png	12
28.2	Anadarko, Barefoot 32C-25HZ, Surface without Legends.png	13
28.3	Anadarko, Barefoot 32C-25HZ, Pressure Test.png	14
29.0 Custom Graphs		15
29.1	Custom Graph	15
29.2	Custom Graph	16
30.0 Appendix		17

1.1 Executive Summary

Halliburton appreciates the opportunity to perform the cementing services on the **Barefoot 32C-25HZ** cement **Surface** casing job. A pre-job safety meeting was held before the job where details of the job were discussed, potential safety hazards were reviewed, and environmental compliance procedures were outlined.

Halliburton maintains a continuous quality improvement process and appreciates any comments or suggestions that you may have. Halliburton again thanks you for the opportunity to perform service work on this well. We hope to be your solutions provider for future projects.

Respectfully,

Halliburton [Brighton]

Job Times

	Date	Time	Time Zone
Called Out	5/11/2014	03:30:00	MT
On Location	5/11/2014	07:00:00	MT
Job Started	5/11/2014	12:03:04	MT
Job Completed	5/11/2014	13:30:00	MT
Departed Location	5/11/2014	14:45:00	MT

1.2 Cementing Job Summary

The Road to Excellence Starts with Safety

Sold To #: 300466		Ship To #: 3458858		Quote #:		Sales Order #: 0901339395							
Customer: ANADARKO PETROLEUM CORP - EBUS				Customer Rep:									
Well Name: BAREFOOT		Well #: 32C-25 HZ		API/UWI #: 05-123-39187-00									
Field: WATTENBERG		City (SAP): MEA		County/Parish: WELD		State: COLORADO							
Legal Description: SE NE-25-3N-68W-2062FNL-663FEL													
Contractor:				Rig/Platform Name/Num: MAJOR 42									
Job BOM: 7521													
Well Type: HORIZONTAL GAS													
Sales Person: HALAMERICA\HB47901				Srvc Supervisor: Kc Smith									
Job													
Formation Name													
Formation Depth (MD)		Top		Bottom									
Form Type				BHST									
Job depth MD		850ft		Job Depth TVD									
Water Depth				Wk Ht Above Floor		3							
Perforation Depth (MD)		2.0 rom		To									
Well Data													
3.0	Description	New / Used	Size in	ID in	Weight lbm/ft	Thread	Grade	Top MD ft	Bottom MD ft	Top TVD ft	Bottom TVD ft		
	Casing		9.625	8.921	36		J-55	0	850				
	Open Hole Section			13.5				0	850				
Tools and Accessories													
Type	Size in	Qty	Make	Depth ft		Type	Size in	Qty	Make				
Guide Shoe	9.625					Top Plug	9.625	1	HES				
Float Shoe	9.625	1		1557		Bottom Plug	9.625		HES				
Float Collar	9.625	1		1518		SSR plug set	9.625		HES				
Insert Float	9.625					Plug Container	9.625	1	HES				
4.0 Stage Tool	9.625					Centralizers	9.625		HES				
Miscellaneous Materials													
Gelling Agt	5.0	Conc	6.0	Surfactant	7.0	Conc	8.0	Acid Type	9.0	Qty	10.0	11.0 onc	12.0
Treatment Fld	13.0	Conc	14.0	15.0 Inhibi tor	16.0	17.0 onc	18.0	Sand Type	19.0	20.0 ize	21.0	22.0 ty	23.0
Fluid Data													
Stage/Plug #: 1													
Fluid #	Stage Type	Fluid Name	Qty	Qty UoM	Mixing Density lbm/gal	Yield ft3/sack	Mix Fluid Gal	Rate bbl/min	Total Mix Fluid Gal				
1	Mud Flush III (Powder)	Mud Flush III	12	bbl	8.4			4					
42 gal/bbl		24.0 FRESH WATER											

Fluid #	Stage Type	Fluid Name	Qty	Qty UoM	Mixing Density lbm/gal	Yield ft3/sack	Mix Fluid Gal	Rate bbl/min	Total Mix Fluid Gal
2	Lead Cement	SWIFTCEM (TM) SYSTEM	558	sack	14.2	1.54	7.64	5	7.64
Fluid #	Stage Type	Fluid Name	Qty	Qty UoM	Mixing Density lbm/gal	Yield ft3/sack	Mix Fluid Gal	Rate bbl/min	Total Mix Fluid Gal
3	Displacement	Displacement	117	bbl	8.33			5	
25.0	Cement Left In Pipe	Amount	42 ft	26.0	Reason	27.0	Shoe Joint		
Comment									

27.1 Planned Pumping Schedule

Anadarko 9 5/8"

Surface

5-11-2014 SO# 901339395 Barefoot 32C-25HZ
Job Procedure

Time	#	Event/Stage	Amount bbls	Rate bpm	Requested Quantity	Density ppg	Yield ft ³ /sk	Water Rq. gal/sk	Total Water bbls
	1	Start Job	***Pre Pump Iron Inspection. Verify and communicate all valves are lined up to pump***						
	4	Fill Lines	3	2	3 bbls	8.33			3
	6	Pressure Test	3500 psi	***Reset Kick Outs to Maximum Job Pressure: 1500 psi***					
	10	Pump Mud Flush III	12	4	12 bbls	8.33			12
	14	Pump Primary Cement	153	6	558 sks	14.2	1.54	7.64	102
	48	Shutdown/Wash Pumps/Drop Plug	Estimated Shutdown Time: 5 Minutes						
	23	Pump Water Displacement	117.4	4	117 bbls	8.33			117.4
	4	Slow Rate	Last 10	3	***Adjust rates as needed for job***				
	26	Pressure to Land Plug	465 psi	***+	500 psi over Final Circulating Pressure***				
	4	Check Floats	Estimated Job Pump Time		#REF! hrs		Total Water For Job (Including Wash Up)		284
	2	End Job							bbls

27.2 Job Overview

		Units	Description
1	Surface temperature at time of job	°F	
2	Mud type (OBM, WBM, SBM, Water, Brine)	-	Water
3	Actual mud density	lb/gal	
4	Actual mud Plastic Viscosity (PV)	cP	
5	Actual mud Yield Point (YP)	lb _f /100ft ²	
6	Actual mud 30 min Gel Strength	lb _f /100ft ²	
7	Time circulated before job	HH:MM	
8	Mud volume circulated	Bbls	

9	Rate at which well was circulated	Bpm	
10	Pipe movement during hole circulation	Y/N	N
11	Rig pressure while circulating	Psi	
12	Time from end mud circulation to start of job	HH:MM	
13	Pipe movement during cementing	Y/N	N
14	Calculated displacement	Bbls	117.4
15	Job displaced by	Rig/HES	HES
16	Annular flow before job	Y/N	Y
17	Annular flow after job	Y/N	Y
18	Length of rat hole	Ft	
19	Units of gas detected while circulating	Units	
20	Was lost circulation experienced at any time?	Y/N	N

27.3 Job Event Log

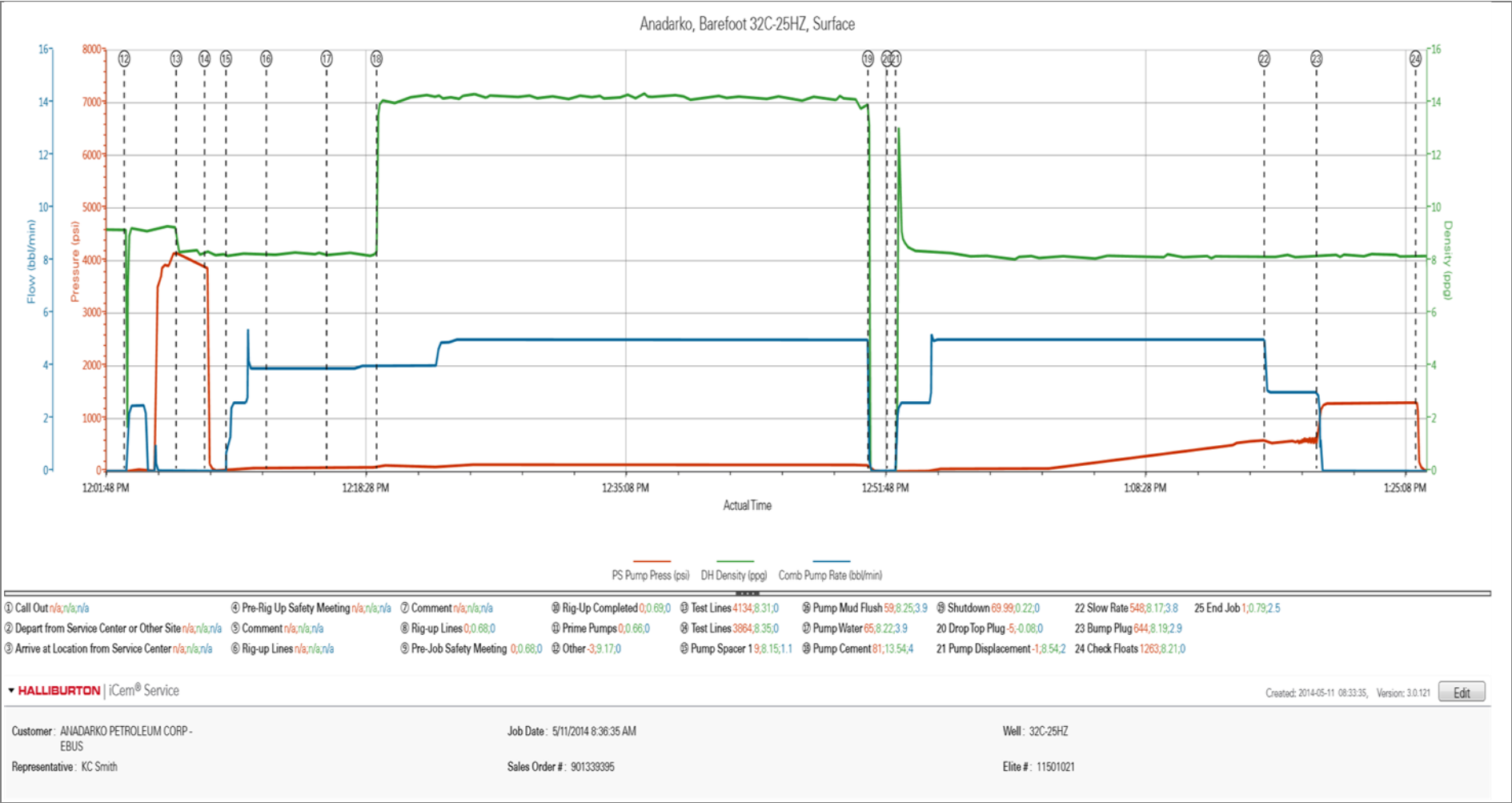
Type	Seq. No.	Activity	Graph Label	Date	Time	Source	PS Pump Press (psi)	DH Density (ppg)	Comb Pump Rate (bbl/min)	Comment
Event	1	Call Out	Call Out	5/11/2014	03:30:00	USER				Crew called out for job. Requested on location at 7:30.
Event	2	Depart from Service Center or Other Site	Depart from Service Center or Other Site	5/11/2014	06:00:00	USER				Crew conducts a pre-journey safety meeting to discuss the hazards associated with the travel to location. Crew enters into journey management and departs for location.
Event	3	Arrive at Location from Service Center	Arrive at Location from Service Center	5/11/2014	07:00:00	USER				Crew arrives safely at location and closes journey management.
Event	4	Pre-Rig Up Safety Meeting	Pre-Rig Up Safety Meeting	5/11/2014	07:05:00	USER				Crew conducts a site assesment, goes over where the equipment will be spotted and how everything will be rigged up, and has a pre rig up safety meeting.
Event	5	Comment	Comment	5/11/2014	07:15:00	USER				Crew Spotted equipment into position.
Event	6	Rig-up Lines	Rig-up Lines	5/11/2014	07:30:00	USER				Crew rigged up the product, water, and iron.
Event	7	Comment	Comment	5/11/2014	08:30:00	USER				Rigged up as far as we can safely go. Waiting on rig to finish running casing and finish circulating.
Event	8	Rig-up Lines	Rig-up Lines	5/11/2014	09:45:00	USER	0.00	0.68	0.00	Crew finished running casing. Cement Crew finished rigging up to the Floor. Waiting on Rig to finish circulating.
Event	9	Pre-Job Safety Meeting	Pre-Job Safety Meeting	5/11/2014	09:50:00	USER	0.00	0.65	0.00	Crew met with the company representative and

										rig crew to have the pre-job safety meeting and go over the job procedure. wait for rig to finish circulating.
Event	10	Rig-Up Completed	Rig-Up Completed	5/11/2014	11:45:00	USER	1.00	9.19	0.00	Cementer loaded the plug with the company representative there to verify, stabbed the cement head on the casing, and finished rigging the lines together.
Event	11	Other	Other	5/11/2014	12:03:04	COM1	-3.00	9.16	0.00	Filled Lines for Pressure Test.
Event	12	Test Lines	Test Lines	5/11/2014	12:05:58	COM1	4081.00	9.25	0.00	Tested Lines to 3500 psi.
Event	13	Test Lines	Test Lines	5/11/2014	12:08:20	COM1	3850.00	8.34	0.00	Ended Pressure Test.
Event	14	Pump Spacer 1	Pump Water	5/11/2014	12:09:36	COM1	8.00	8.17	1.00	Pumped 10 bbls of Water.
Event	15	Pump Spacer	Pump Mud Flush	5/11/2014	12:12:11	USER	59.00	8.23	3.90	Pumped 12 bbls of Mud Flush
Event	16	Pump Water	Pump Water	5/11/2014	12:16:03	USER	65.00	8.22	3.90	Pumped 10 bbls of Water.
Event	17	Pump Cement	Pump Cement	5/11/2014	12:19:15	COM1				Pumped 153 bbls, 558 sks of SwiftCem Cement at 14.2 lb/gal, 1.54 Yield, 7.64 gal/sk.
Event	18	Shutdown	Shutdown	5/11/2014	12:50:46	COM1				Shutdown.
Event	19	Drop Top Plug	Drop Top Plug	5/11/2014	12:51:59	USER	-5.00	-0.08	0.00	Drop top plug. Washed up on top of the plug.
Event	20	Pump Displacement	Pump Displacement	5/11/2014	12:52:32	COM1	-1.00	8.54	2.00	Pumped 117.5 bbls of Fresh Water displacement.
Event	21	Slow Rate	Slow Rate	5/11/2014	13:16:11	USER	548.00	8.17	3.80	Slowed Rate to 3 bpm at 107 bbls away to land the plug.
Event	22	Bump Plug	Bump Plug	5/11/2014	13:19:32	COM1	644.00	8.19	2.90	Bumped plug after 117 bbls away. 10 bbls of cement back to surface.
Event	23	Check Floats	Check Floats	5/11/2014	13:25:53	USER	1297.00	8.21	0.00	Held for 5 minutes as per company man. Checked

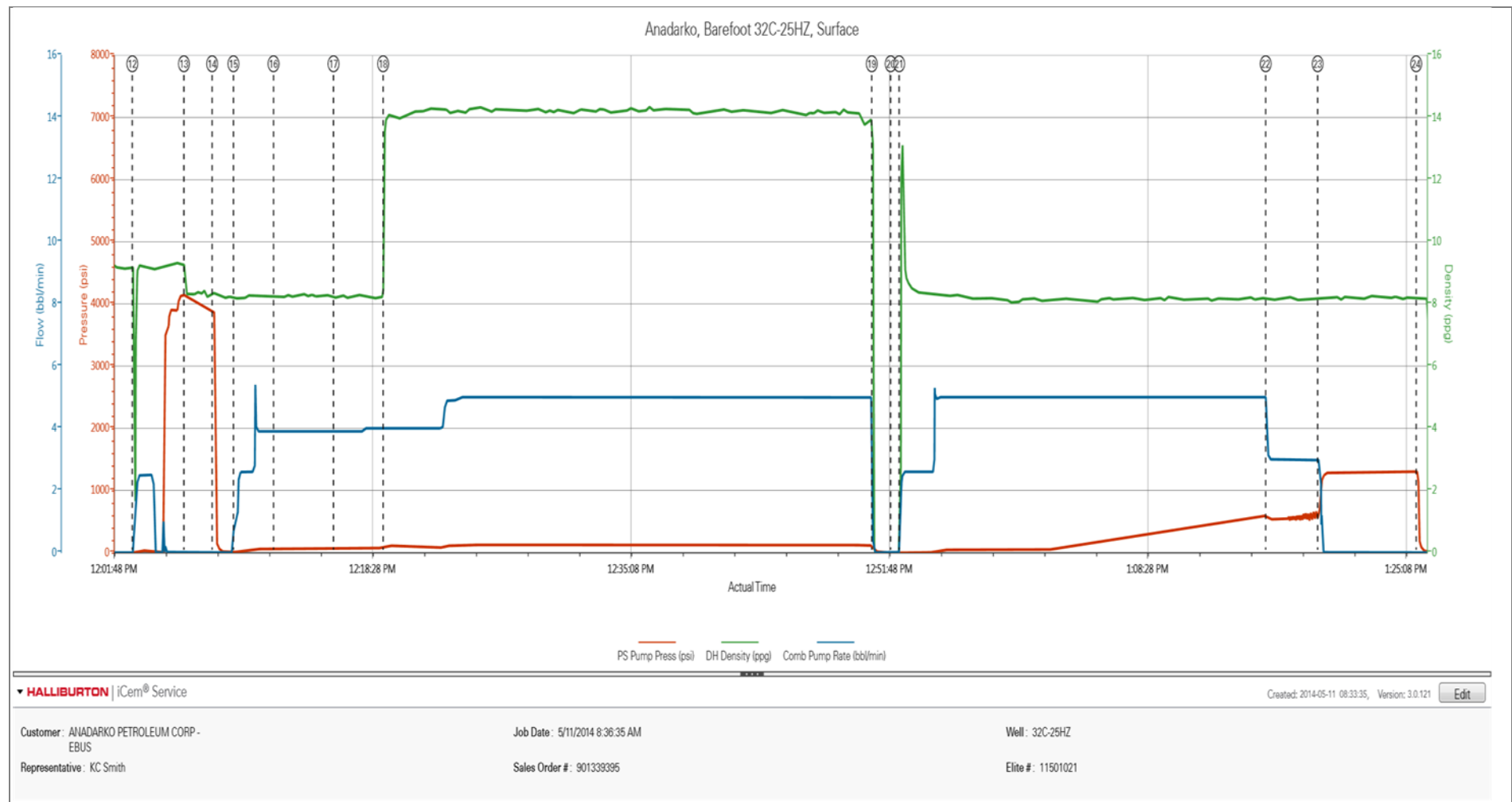
										floats, 1 bbl back.
Event	24	End Job	End Job	5/11/2014	13:30:00	COM1	-1.00	8.19	0.00	Job Complete.
Event	25	Post-Job Safety Meeting (Pre Rig-Down)	Post-Job Safety Meeting (Pre Rig-Down)	5/11/2014	13:35:00	USER	-2.00	-0.18	0.00	Met with crew to have a pre-rig down safety meeting.
Event	26	Rig Down Lines	Rig Down Lines	5/11/2014	13:40:00	USER	6.00	8.21	2.50	Rigged down iron, hoses, and equipment.
Event	27	Pre-Convoy Safety Meeting	Pre-Convoy Safety Meeting	5/11/2014	14:30:00	USER				Crew met to have a pre convoy safety meeting and prepared trucks and paperwork for departure.
Event	28	Depart Location for Service Center or Other Site	Depart Location for Service Center or Other Site	5/11/2014	14:45:00	USER				Crew departed for yard.

28.0 Attachments

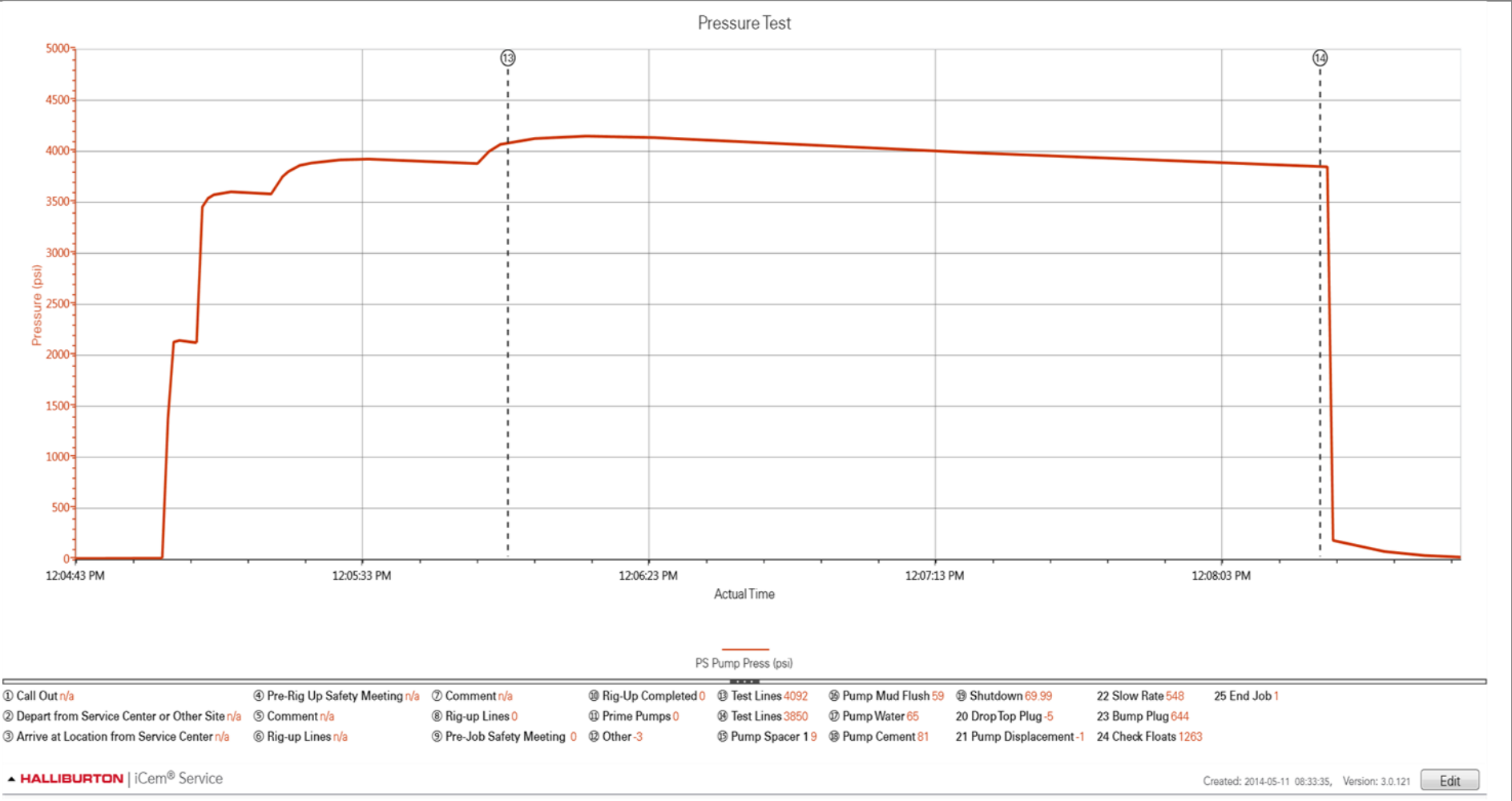
28.1 Anadarko, Barefoot 32C-25HZ, Surface.png



28.2 Anadarko, Barefoot 32C-25HZ, Surface without Legends.png

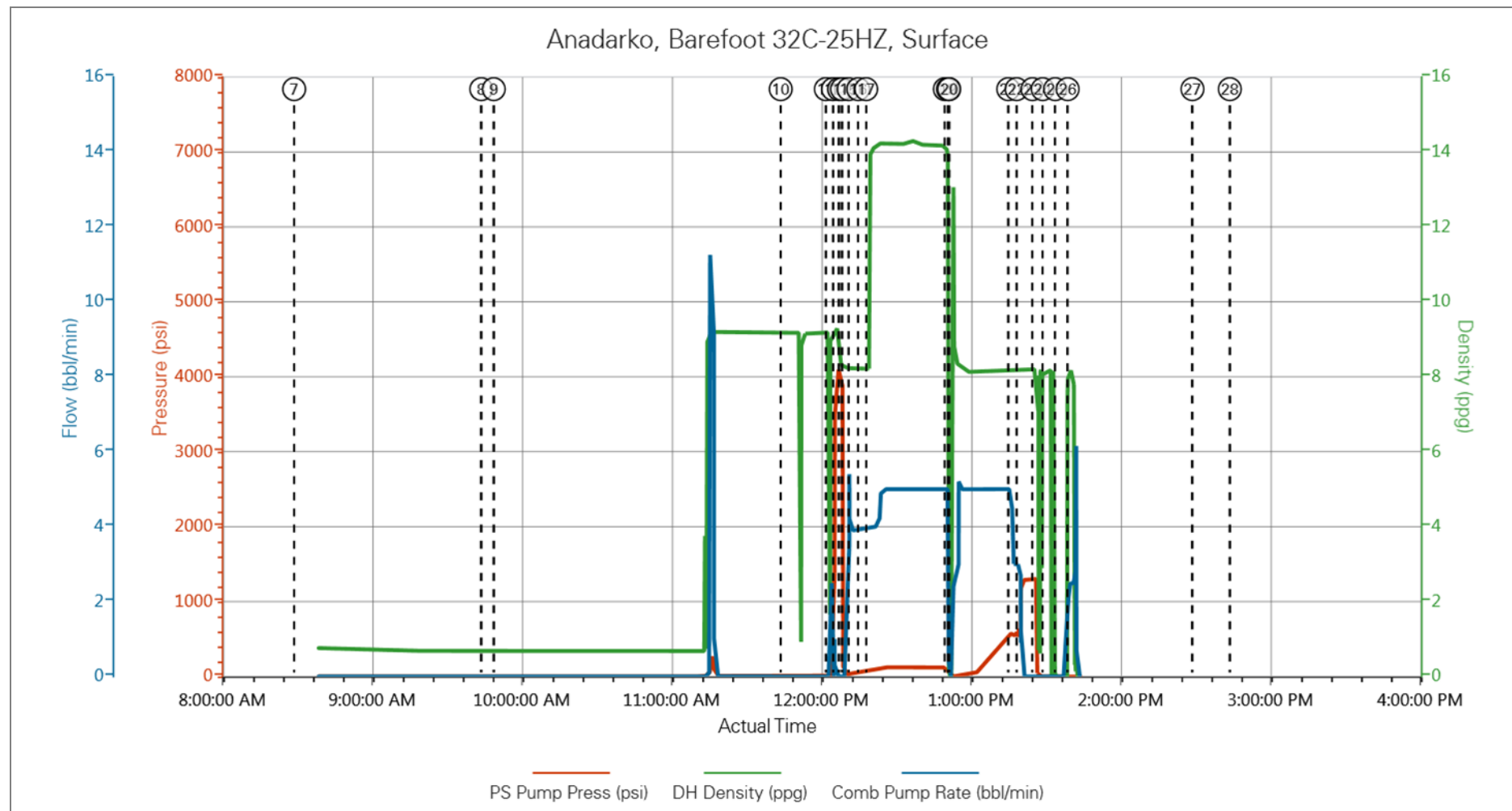


28.3 Anadarko, Barefoot 32C-25HZ, Pressure Test.png

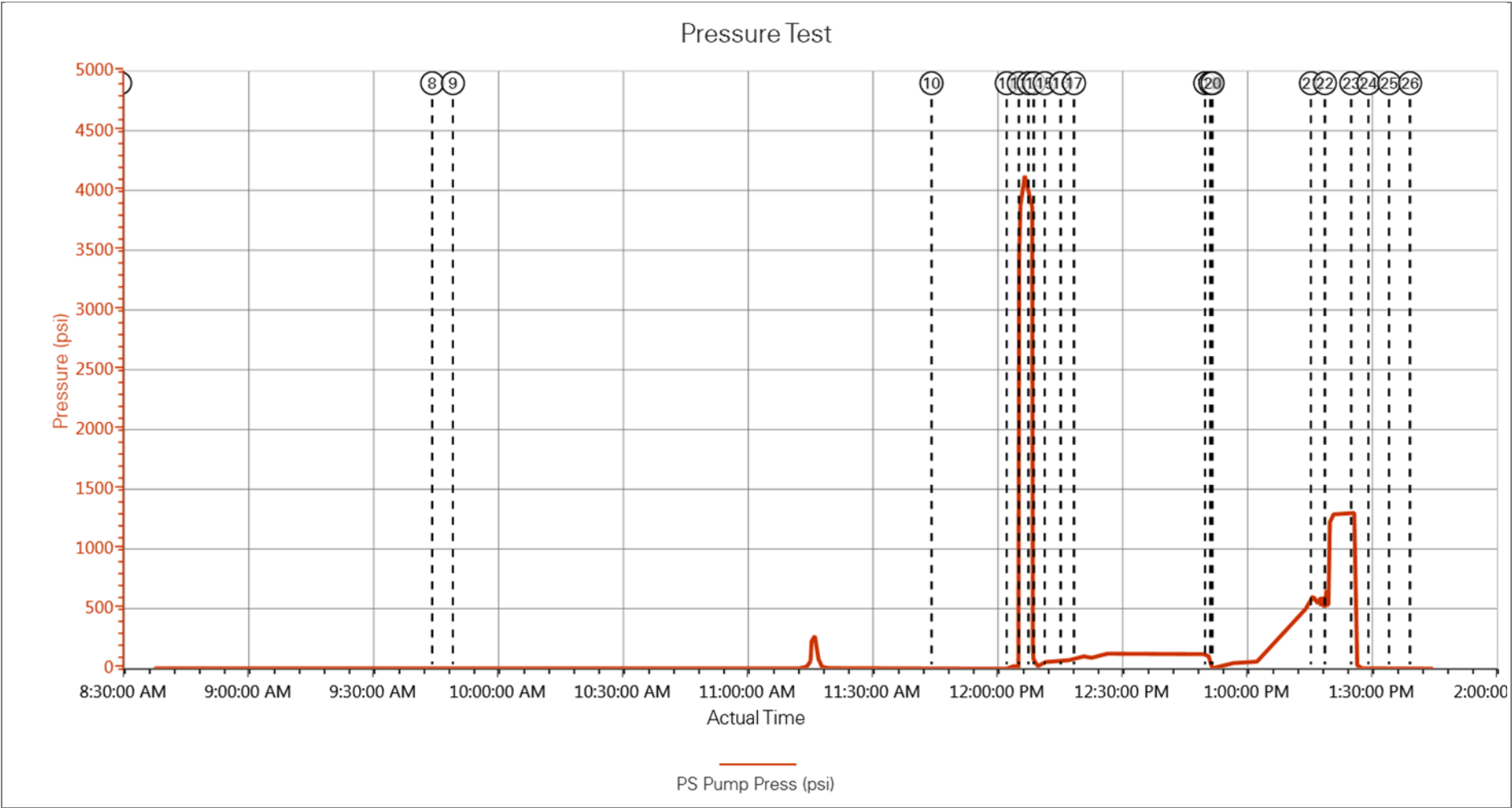


29.0 Custom Graphs

29.1 Custom Graph



29.2 Custom Graph



30.0 Appendix

Insert Planned Pump Schedule from Proposal or actual Job Procedure built for job