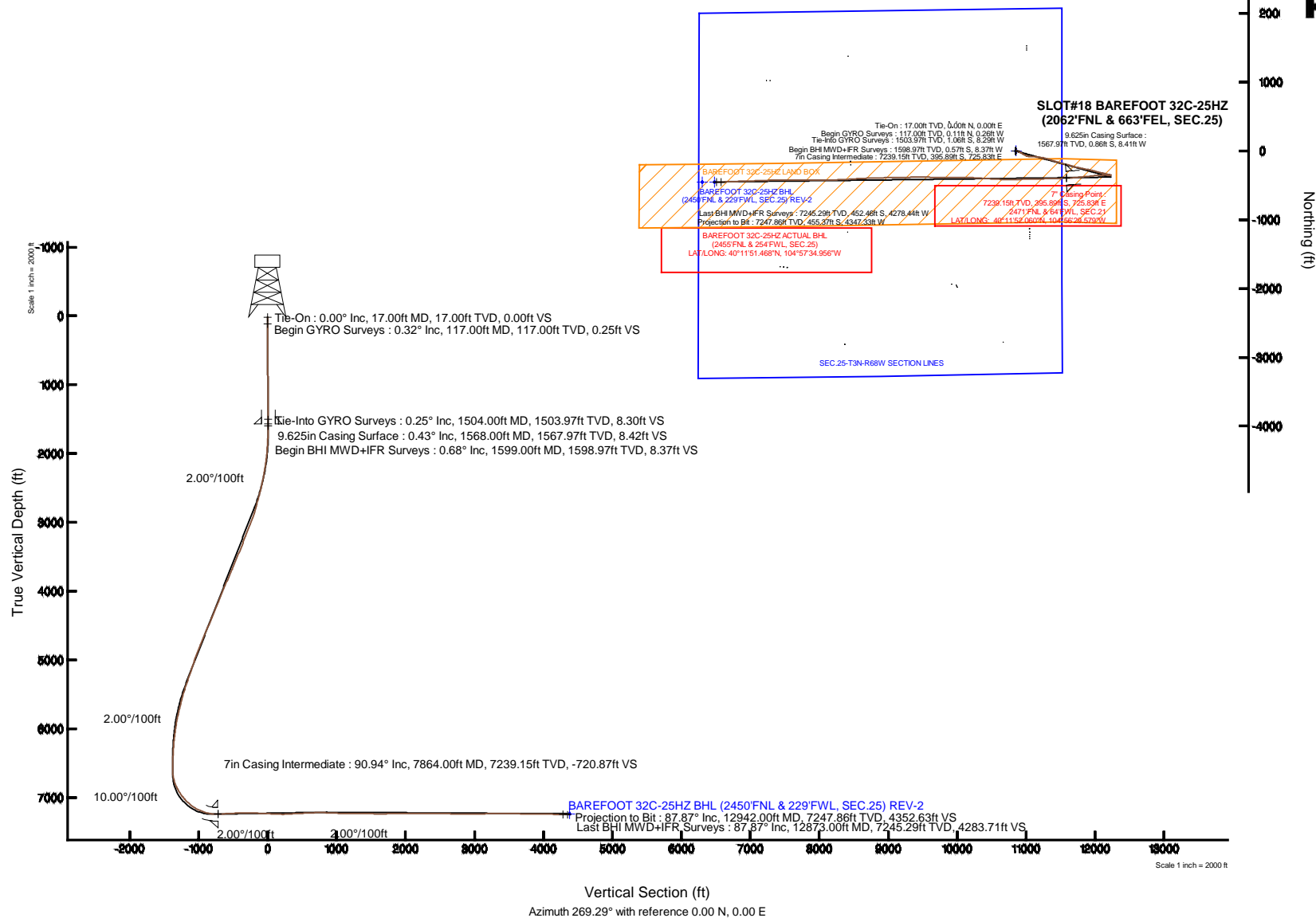
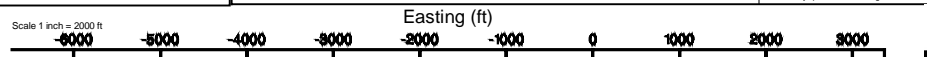


Location:	COLORADO	Slot:	SLOT#18 BAREFOOT 32C-25HZ (2062'FNL & 663'FEL, SEC.25)
Field:	WELD COUNTY (KERR MCGEE)	Well:	BAREFOOT 32C-25HZ
Facility:	SEC.25-T3N-R68W	Wellbore:	BAREFOOT 32C-25HZ PWB

True vertical depths are referenced to XTREME 8 (17KB) (R3B)	Grid System: NAD83 / Lambert Colorado SP, Northern Zone (501), US feet
Measured depths are referenced to XTREME 8 (17KB) (RKB)	North Reference: True north
XTREME 8 (17KB) (RKB) to Mean Sea Level: 4904 feet	Scale: True distance
Mean Sea Level to Mud line (At Slot: SLOT#18 BAREFOOT 32C:25HZ (2062FNL & 663FEL, SEC.25)): 0 feet	Depths are in feet
Coordinates are in feet referenced to Slot	Created by: precain on 12/Aug/2014



Actual Wellpath Report

BAREFOOT 32C-25HZ AWP

Page 1 of 7

REFERENCE WELLPATH IDENTIFICATION			
Operator	KERR-MCGEE OIL & GAS ONSHORE LP	Slot	SLOT#18 BAREFOOT 32C-25HZ (2062'FNL & 663'FEL, SEC.25)
Area	COLORADO	Well	BAREFOOT 32C-25HZ
Field	WELD COUNTY (KERR MCGEE)	Wellbore	BAREFOOT 32C-25HZ AWB
Facility	SEC.25-T3N-R68W		

REPORT SETUP INFORMATION			
Projection System	NAD83 / Lambert Colorado SP, Northern Zone (501), US feet	Software System	WellArchitect® 4.0.0
North Reference	True	User	Precain
Scale	0.999957	Report Generated	12/Aug/2014 at 10:44
Convergence at slot	n/a	Database/Source file	WellArchitectDB/BAREFOOT_32C-25HZ_AWB.xml

WELLPATH LOCATION						
	Local coordinates		Grid coordinates		Geographic coordinates	
	North[ft]	East[ft]	Easting[US ft]	Northing[US ft]	Latitude	Longitude
Slot Location	-436.73	866.53	3155268.77	1315781.51	40°11'55.972"N	104°56'38.933"W
Facility Reference Pt			3154399.57	1316212.82	40°12'00.288"N	104°56'50.100"W
Field Reference Pt			3197771.84	1268891.29	40°04'09.600"N	104°47'36.000"W

WELLPATH DATUM			
Calculation method	Minimum curvature	XTREME 8 (17'KB) (RKB) to Facility Vertical Datum	4904.00ft
Horizontal Reference Pt	Slot	XTREME 8 (17'KB) (RKB) to Mean Sea Level	4904.00ft
Vertical Reference Pt	XTREME 8 (17'KB) (RKB)	XTREME 8 (17'KB) (RKB) to Mud Line at Slot (SLOT#18 BAREFOOT 32C-25HZ (2062'FNL & 663'FEL, SEC.25))	4904.00ft
MD Reference Pt	XTREME 8 (17'KB) (RKB)	Section Origin	N 0.00, E 0.00 ft
Field Vertical Reference	Mean Sea Level	Section Azimuth	269.29°

Actual Wellpath Report

BAREFOOT 32C-25HZ AWP

Page 2 of 7

REFERENCE WELLPATH IDENTIFICATION			
Operator	KERR-MCGEE OIL & GAS ONSHORE LP	Slot	SLOT#18 BAREFOOT 32C-25HZ (2062'FNL & 663'FEL, SEC.25)
Area	COLORADO	Well	BAREFOOT 32C-25HZ
Field	WELD COUNTY (KERR MCGEE)	Wellbore	BAREFOOT 32C-25HZ AWP
Facility	SEC.25-T3N-R68W		

WELLPATH DATA (157 stations) † = interpolated/extrapolated station

MD [ft]	Inclination [°]	Azimuth [°]	TVD [ft]	Vert Sect [ft]	North [ft]	East [ft]	Latitude	Longitude	DLS [°/100ft]	Comments
0.00†	0.000	294.010	0.00	0.00	0.00	0.00	40°11'55.972"N	104°56'38.933"W	0.00	
17.00	0.000	294.010	17.00	0.00	0.00	0.00	40°11'55.972"N	104°56'38.933"W	0.00	Tie-On
117.00	0.320	294.010	117.00	0.25	0.11	-0.26	40°11'55.973"N	104°56'38.936"W	0.32	Begin GYRO Surveys
217.00	0.250	271.550	217.00	0.73	0.23	-0.73	40°11'55.974"N	104°56'38.942"W	0.13	
317.00	0.170	275.650	317.00	1.09	0.25	-1.09	40°11'55.975"N	104°56'38.947"W	0.08	
417.00	0.300	290.040	417.00	1.48	0.36	-1.49	40°11'55.976"N	104°56'38.952"W	0.14	
517.00	0.270	311.320	517.00	1.90	0.60	-1.91	40°11'55.978"N	104°56'38.958"W	0.11	
617.00	0.270	296.500	616.99	2.29	0.86	-2.30	40°11'55.981"N	104°56'38.963"W	0.07	
717.00	0.300	273.240	716.99	2.76	0.98	-2.77	40°11'55.982"N	104°56'38.969"W	0.12	
817.00	0.320	258.960	816.99	3.29	0.95	-3.31	40°11'55.981"N	104°56'38.976"W	0.08	
917.00	0.400	258.810	916.99	3.91	0.82	-3.92	40°11'55.980"N	104°56'38.984"W	0.08	
1017.00	0.550	247.280	1016.99	4.70	0.57	-4.71	40°11'55.978"N	104°56'38.994"W	0.18	
1117.00	0.630	247.050	1116.98	5.65	0.17	-5.66	40°11'55.974"N	104°56'39.006"W	0.08	
1217.00	0.470	246.930	1216.98	6.54	-0.20	-6.54	40°11'55.970"N	104°56'39.017"W	0.16	
1317.00	0.430	239.560	1316.97	7.25	-0.55	-7.24	40°11'55.967"N	104°56'39.026"W	0.07	
1417.00	0.370	243.430	1416.97	7.86	-0.89	-7.85	40°11'55.963"N	104°56'39.034"W	0.07	
1504.00	0.250	255.260	1503.97	8.30	-1.06	-8.29	40°11'55.961"N	104°56'39.040"W	0.16	Tie-Into GYRO Surveys
1599.00	0.680	12.330	1598.97	8.37	-0.57	-8.37	40°11'55.966"N	104°56'39.041"W	0.87	Begin BHI MWD+IFR Surveys
1691.00	2.060	58.320	1690.94	6.83	0.84	-6.84	40°11'55.980"N	104°56'39.021"W	1.81	
1783.00	2.500	81.990	1782.87	3.43	1.98	-3.45	40°11'55.992"N	104°56'38.977"W	1.12	
1875.00	3.660	75.990	1874.74	-1.42	2.98	1.39	40°11'56.001"N	104°56'38.915"W	1.31	
1966.00	5.070	97.080	1965.48	-8.23	3.18	8.20	40°11'56.003"N	104°56'38.827"W	2.32	
2058.00	6.950	105.690	2056.97	-17.60	1.18	17.59	40°11'55.984"N	104°56'38.706"W	2.26	
2149.00	8.630	116.730	2147.13	-28.94	-3.38	28.99	40°11'55.939"N	104°56'38.559"W	2.46	
2241.00	11.080	122.050	2237.77	-42.51	-11.18	42.65	40°11'55.862"N	104°56'38.383"W	2.84	
2332.00	12.990	124.690	2326.76	-58.20	-21.64	58.47	40°11'55.758"N	104°56'38.179"W	2.18	
2424.00	13.980	122.090	2416.23	-75.97	-33.43	76.39	40°11'55.642"N	104°56'37.949"W	1.26	
2516.00	15.560	117.700	2505.19	-96.17	-45.07	96.73	40°11'55.527"N	104°56'37.686"W	2.10	
2608.00	17.500	120.110	2593.38	-118.90	-57.75	119.62	40°11'55.401"N	104°56'37.391"W	2.24	
2700.00	16.500	111.030	2681.38	-142.92	-69.38	143.79	40°11'55.286"N	104°56'37.080"W	3.08	
2791.00	14.370	102.960	2769.10	-165.90	-76.55	166.86	40°11'55.216"N	104°56'36.783"W	3.32	
2883.00	16.270	99.160	2857.83	-189.69	-81.16	190.71	40°11'55.170"N	104°56'36.475"W	2.33	
2975.00	21.340	92.060	2944.90	-219.13	-83.82	220.19	40°11'55.144"N	104°56'36.095"W	6.04	
3066.00	21.660	91.750	3029.57	-252.45	-84.93	253.52	40°11'55.133"N	104°56'35.666"W	0.37	
3158.00	21.670	92.490	3115.07	-286.37	-86.18	287.46	40°11'55.120"N	104°56'35.228"W	0.30	
3250.00	21.820	98.120	3200.53	-320.23	-89.34	321.36	40°11'55.089"N	104°56'34.792"W	2.27	
3342.00	21.410	103.020	3286.07	-353.44	-95.54	354.65	40°11'55.028"N	104°56'34.363"W	2.01	
3427.00	21.710	100.000	3365.12	-383.96	-101.76	385.25	40°11'54.966"N	104°56'33.968"W	1.35	
3512.00	24.200	102.880	3443.39	-416.35	-108.38	417.72	40°11'54.901"N	104°56'33.550"W	3.21	
3597.00	23.040	102.750	3521.27	-449.46	-115.93	450.93	40°11'54.826"N	104°56'33.122"W	1.37	
3683.00	22.450	108.220	3600.59	-481.36	-124.78	482.95	40°11'54.739"N	104°56'32.709"W	2.55	
3768.00	23.600	109.100	3678.82	-512.73	-135.42	514.44	40°11'54.634"N	104°56'32.303"W	1.41	
3853.00	25.320	107.230	3756.19	-546.03	-146.37	547.88	40°11'54.525"N	104°56'31.872"W	2.22	
3938.00	25.090	106.590	3833.09	-580.53	-156.90	582.51	40°11'54.421"N	104°56'31.426"W	0.42	
4023.00	24.660	108.010	3910.21	-614.53	-167.53	616.65	40°11'54.316"N	104°56'30.986"W	0.87	

Actual Wellpath Report

BAREFOOT 32C-25HZ AWP

Page 3 of 7

REFERENCE WELLPATH IDENTIFICATION			
Operator	KERR-MCGEE OIL & GAS ONSHORE LP	Slot	SLOT#18 BAREFOOT 32C-25HZ (2062'FNL & 663'FEL, SEC.25)
Area	COLORADO	Well	BAREFOOT 32C-25HZ
Field	WELD COUNTY (KERR MCGEE)	Wellbore	BAREFOOT 32C-25HZ AWP
Facility	SEC.25-T3N-R68W		

WELLPATH DATA (157 stations)

MD [ft]	Inclination [°]	Azimuth [°]	TVD [ft]	Vert Sect [ft]	North [ft]	East [ft]	Latitude	Longitude	DLS [°/100ft]	Comments
4115.00	23.450	106.890	3994.22	-650.16	-178.79	652.42	40°11'54.205"N	104°56'30.525"W	1.41	
4200.00	22.700	104.460	4072.42	-682.11	-187.79	684.49	40°11'54.116"N	104°56'30.112"W	1.43	
4286.00	21.840	101.930	4152.00	-713.74	-195.25	716.21	40°11'54.042"N	104°56'29.703"W	1.50	
4371.00	23.340	102.950	4230.48	-745.53	-202.29	748.09	40°11'53.973"N	104°56'29.292"W	1.82	
4456.00	23.790	107.130	4308.40	-778.21	-211.11	780.88	40°11'53.886"N	104°56'28.870"W	2.04	
4541.00	23.050	107.990	4386.39	-810.29	-221.30	813.09	40°11'53.785"N	104°56'28.455"W	0.96	
4627.00	23.360	104.270	4465.44	-842.71	-230.70	845.63	40°11'53.692"N	104°56'28.035"W	1.74	
4710.00	23.900	102.220	4541.48	-875.00	-238.32	878.01	40°11'53.617"N	104°56'27.618"W	1.18	
4795.00	23.300	102.760	4619.37	-908.13	-245.68	911.24	40°11'53.544"N	104°56'27.190"W	0.75	
4881.00	23.690	101.320	4698.24	-941.57	-252.82	944.77	40°11'53.473"N	104°56'26.758"W	0.81	
4966.00	23.570	101.780	4776.12	-974.86	-259.65	978.15	40°11'53.406"N	104°56'26.328"W	0.26	
5138.00	19.080	98.930	4936.30	-1036.18	-271.04	1039.62	40°11'53.293"N	104°56'25.536"W	2.68	
5224.00	18.550	102.510	5017.71	-1063.36	-276.18	1066.86	40°11'53.243"N	104°56'25.184"W	1.48	
5309.00	19.560	105.280	5098.05	-1090.20	-282.86	1093.78	40°11'53.177"N	104°56'24.837"W	1.59	
5394.00	19.100	104.370	5178.26	-1117.31	-290.06	1120.98	40°11'53.105"N	104°56'24.487"W	0.65	
5480.00	20.000	104.560	5259.30	-1145.08	-297.25	1148.85	40°11'53.034"N	104°56'24.128"W	1.05	
5565.00	20.290	106.210	5339.10	-1173.20	-305.02	1177.07	40°11'52.958"N	104°56'23.764"W	0.75	
5650.00	18.250	104.990	5419.34	-1200.12	-312.58	1204.08	40°11'52.883"N	104°56'23.416"W	2.45	
5735.00	16.450	102.500	5500.47	-1224.65	-318.62	1228.69	40°11'52.823"N	104°56'23.099"W	2.29	
5821.00	14.750	101.370	5583.30	-1247.21	-323.42	1251.31	40°11'52.776"N	104°56'22.807"W	2.01	
5906.00	15.010	105.570	5665.45	-1268.36	-328.51	1272.52	40°11'52.725"N	104°56'22.534"W	1.30	
5991.00	13.320	104.330	5747.86	-1288.38	-333.88	1292.61	40°11'52.672"N	104°56'22.275"W	2.02	
6076.00	11.790	103.530	5830.83	-1306.26	-338.34	1310.55	40°11'52.628"N	104°56'22.044"W	1.81	
6162.00	10.190	102.200	5915.25	-1322.19	-342.00	1326.52	40°11'52.592"N	104°56'21.838"W	1.88	
6247.00	8.480	101.500	5999.12	-1335.65	-344.84	1340.02	40°11'52.564"N	104°56'21.664"W	2.02	
6332.00	7.270	106.330	6083.32	-1346.91	-347.60	1351.32	40°11'52.537"N	104°56'21.519"W	1.62	
6417.00	5.870	107.980	6167.76	-1356.17	-350.46	1360.61	40°11'52.508"N	104°56'21.399"W	1.66	
6503.00	4.850	108.450	6253.38	-1363.77	-352.97	1368.25	40°11'52.484"N	104°56'21.301"W	1.19	
6590.00	3.510	106.950	6340.15	-1369.79	-354.91	1374.28	40°11'52.464"N	104°56'21.223"W	1.55	
6675.00	1.830	105.290	6425.05	-1373.57	-356.02	1378.08	40°11'52.453"N	104°56'21.174"W	1.98	
6761.00	0.500	95.690	6511.03	-1375.26	-356.42	1379.78	40°11'52.449"N	104°56'21.152"W	1.56	
6846.00	1.510	142.800	6596.02	-1376.30	-357.35	1380.83	40°11'52.440"N	104°56'21.138"W	1.44	
6889.00	3.000	267.190	6639.00	-1375.51	-357.86	1380.04	40°11'52.435"N	104°56'21.148"W	9.42	
6931.00	8.660	274.930	6680.76	-1371.26	-357.64	1375.79	40°11'52.437"N	104°56'21.203"W	13.58	
6974.00	13.660	277.920	6722.94	-1363.01	-356.66	1367.53	40°11'52.447"N	104°56'21.310"W	11.70	
7017.00	17.350	272.550	6764.37	-1351.59	-355.68	1356.09	40°11'52.457"N	104°56'21.457"W	9.20	
7059.00	21.960	271.940	6803.91	-1337.48	-355.13	1341.98	40°11'52.462"N	104°56'21.639"W	10.99	
7102.00	26.060	272.330	6843.18	-1320.01	-354.47	1324.50	40°11'52.469"N	104°56'21.864"W	9.54	
7144.00	27.820	272.040	6880.62	-1301.01	-353.75	1305.49	40°11'52.476"N	104°56'22.109"W	4.20	
7187.00	31.030	271.100	6918.07	-1279.90	-353.18	1284.37	40°11'52.482"N	104°56'22.381"W	7.54	
7229.00	34.760	269.150	6953.33	-1257.10	-353.15	1261.57	40°11'52.482"N	104°56'22.675"W	9.23	
7272.00	38.620	267.000	6987.81	-1231.43	-354.04	1235.90	40°11'52.473"N	104°56'23.006"W	9.46	
7315.00	43.230	266.450	7020.29	-1203.29	-355.65	1207.79	40°11'52.457"N	104°56'23.368"W	10.75	
7357.00	45.890	266.990	7050.21	-1173.86	-357.33	1178.37	40°11'52.441"N	104°56'23.747"W	6.40	
7400.00	46.760	265.400	7079.91	-1142.80	-359.40	1147.34	40°11'52.420"N	104°56'24.147"W	3.35	

REFERENCE WELLPATH IDENTIFICATION			
Operator	KERR-MCGEE OIL & GAS ONSHORE LP	Slot	SLOT#18 BAREFOOT 32C-25HZ (2062'FNL & 663'FEL, SEC.25)
Area	COLORADO	Well	BAREFOOT 32C-25HZ
Field	WELD COUNTY (KERR MCGEE)	Wellbore	BAREFOOT 32C-25HZ AWP
Facility	SEC.25-T3N-R68W		

WELLPATH DATA (157 stations) † = interpolated/extrapolated station

MD [ft]	Inclination [°]	Azimuth [°]	TVD [ft]	Vert Sect [ft]	North [ft]	East [ft]	Latitude	Longitude	DLS [°/100ft]	Comments
7442.00	49.330	263.030	7107.99	-1111.70	-362.56	1116.27	40°11'52.389"N	104°56'24.548"W	7.42	
7485.00	54.900	263.290	7134.38	-1077.97	-366.60	1082.59	40°11'52.349"N	104°56'24.982"W	12.96	
7527.00	60.250	264.800	7156.89	-1042.68	-370.26	1047.34	40°11'52.313"N	104°56'25.436"W	13.09	
7570.00	65.350	265.270	7176.54	-1004.55	-373.57	1009.25	40°11'52.280"N	104°56'25.927"W	11.90	
7613.00	68.930	263.650	7193.24	-965.08	-377.40	969.82	40°11'52.242"N	104°56'26.435"W	9.02	
7655.00	71.650	264.330	7207.41	-925.71	-381.53	930.51	40°11'52.202"N	104°56'26.942"W	6.65	
7698.00	74.480	265.270	7219.93	-884.71	-385.26	889.54	40°11'52.165"N	104°56'27.470"W	6.91	
7740.00	77.690	265.750	7230.03	-844.04	-388.45	848.91	40°11'52.133"N	104°56'27.993"W	7.72	
7783.00	83.210	265.940	7237.16	-801.72	-391.52	806.63	40°11'52.103"N	104°56'28.538"W	12.84	
7809.00	88.730	266.920	7238.99	-775.83	-393.13	780.76	40°11'52.087"N	104°56'28.871"W	21.56	
7864.00†	90.942	267.344	7239.15	-720.87	-395.89	725.83	40°11'52.060"N	104°56'29.579"W	4.09	7" Casing Point
7949.00	94.360	268.000	7235.22	-636.01	-399.34	641.00	40°11'52.026"N	104°56'30.672"W	4.09	
7992.00	93.070	268.220	7232.43	-593.11	-400.75	598.12	40°11'52.012"N	104°56'31.225"W	3.04	
8078.00	92.980	268.330	7227.89	-507.25	-403.34	512.28	40°11'51.986"N	104°56'32.331"W	0.17	
8163.00	91.750	269.020	7224.38	-422.33	-405.30	427.37	40°11'51.967"N	104°56'33.425"W	1.66	
8251.00	90.430	268.140	7222.71	-334.35	-407.48	339.42	40°11'51.945"N	104°56'34.559"W	1.80	
8340.00	89.440	269.220	7222.81	-245.36	-409.53	250.45	40°11'51.925"N	104°56'35.706"W	1.65	
8428.00	87.500	268.670	7225.16	-157.40	-411.15	162.50	40°11'51.909"N	104°56'36.839"W	2.29	
8599.00	87.370	268.220	7232.81	13.41	-415.78	-8.27	40°11'51.863"N	104°56'39.040"W	0.27	
8684.00	86.890	270.000	7237.07	98.30	-417.10	-93.15	40°11'51.850"N	104°56'40.133"W	2.17	
8769.00	87.930	271.910	7240.91	183.17	-415.69	-178.04	40°11'51.864"N	104°56'41.227"W	2.56	
8854.00	93.420	273.090	7239.91	268.00	-411.98	-262.92	40°11'51.901"N	104°56'42.321"W	6.61	
8939.00	94.040	273.560	7234.38	352.61	-407.06	-347.60	40°11'51.949"N	104°56'43.412"W	0.91	
9025.00	92.330	273.160	7229.60	438.26	-402.03	-433.32	40°11'51.999"N	104°56'44.517"W	2.04	
9202.00	92.950	273.900	7221.45	614.58	-391.14	-609.79	40°11'52.107"N	104°56'46.791"W	0.55	
9287.00	91.260	272.320	7218.33	699.33	-386.54	-694.60	40°11'52.152"N	104°56'47.884"W	2.72	
9372.00	89.130	270.830	7218.04	784.26	-384.20	-779.56	40°11'52.175"N	104°56'48.979"W	3.06	
9542.00	87.160	269.080	7223.54	954.14	-384.33	-949.46	40°11'52.174"N	104°56'51.169"W	1.55	
9628.00	87.930	269.930	7227.23	1040.06	-385.08	-1035.38	40°11'52.166"N	104°56'52.276"W	1.33	
9713.00	87.680	269.780	7230.48	1124.99	-385.29	-1120.31	40°11'52.164"N	104°56'53.370"W	0.34	
9798.00	89.660	271.200	7232.45	1209.95	-384.56	-1205.28	40°11'52.171"N	104°56'54.465"W	2.87	
9882.00	89.560	270.690	7233.03	1293.91	-383.18	-1289.27	40°11'52.185"N	104°56'55.548"W	0.62	
9967.00	89.960	270.640	7233.38	1378.88	-382.19	-1374.26	40°11'52.195"N	104°56'56.643"W	0.47	
10052.00	89.960	269.680	7233.44	1463.87	-381.95	-1459.26	40°11'52.197"N	104°56'57.738"W	1.13	
10137.00	89.260	268.080	7234.02	1548.87	-383.62	-1544.24	40°11'52.181"N	104°56'58.833"W	2.05	
10223.00	89.660	268.400	7234.83	1634.85	-386.26	-1630.19	40°11'52.154"N	104°56'59.941"W	0.60	
10310.00	91.530	269.890	7233.93	1721.84	-387.55	-1717.17	40°11'52.142"N	104°57'01.062"W	2.75	
10395.00	91.810	269.580	7231.45	1806.80	-387.95	-1802.13	40°11'52.138"N	104°57'02.157"W	0.49	
10480.00	90.490	267.960	7229.74	1891.77	-389.77	-1887.09	40°11'52.120"N	104°57'03.252"W	2.46	
10566.00	90.580	268.340	7228.94	1977.75	-392.55	-1973.04	40°11'52.092"N	104°57'04.359"W	0.45	
10651.00	90.610	268.430	7228.06	2062.74	-394.94	-2058.01	40°11'52.068"N	104°57'05.454"W	0.11	
10736.00	90.330	268.070	7227.36	2147.72	-397.54	-2142.96	40°11'52.043"N	104°57'06.549"W	0.54	
10821.00	89.590	267.450	7227.42	2232.69	-400.86	-2227.90	40°11'52.010"N	104°57'07.644"W	1.14	
10907.00	88.460	266.480	7228.88	2318.60	-405.41	-2313.76	40°11'51.965"N	104°57'08.750"W	1.73	
10992.00	88.830	266.510	7230.89	2403.48	-410.61	-2398.58	40°11'51.913"N	104°57'09.843"W	0.44	

Actual Wellpath Report

BAREFOOT 32C-25HZ AWP

Page 5 of 7

REFERENCE WELLPATH IDENTIFICATION			
Operator	KERR-MCGEE OIL & GAS ONSHORE LP	Slot	SLOT#18 BAREFOOT 32C-25HZ (2062'FNL & 663'FEL, SEC.25)
Area	COLORADO	Well	BAREFOOT 32C-25HZ
Field	WELD COUNTY (KERR MCGEE)	Wellbore	BAREFOOT 32C-25HZ AWP
Facility	SEC.25-T3N-R68W		

WELLPATH DATA (157 stations)

MD [ft]	Inclination [°]	Azimuth [°]	TVD [ft]	Vert Sect [ft]	North [ft]	East [ft]	Latitude	Longitude	DLS [°/100ft]	Comments
11077.00	89.410	267.060	7232.20	2488.38	-415.38	-2483.43	40°11'51.866"N	104°57'10.937"W	0.94	
11163.00	89.660	267.530	7232.90	2574.33	-419.43	-2569.34	40°11'51.826"N	104°57'12.044"W	0.62	
11248.00	88.920	268.260	7233.95	2659.30	-422.56	-2654.27	40°11'51.795"N	104°57'13.138"W	1.22	
11333.00	89.290	268.820	7235.28	2744.28	-424.72	-2739.23	40°11'51.773"N	104°57'14.233"W	0.79	
11418.00	90.300	269.810	7235.58	2829.28	-425.74	-2824.22	40°11'51.763"N	104°57'15.328"W	1.66	
11503.00	89.720	269.030	7235.57	2914.27	-426.60	-2909.22	40°11'51.755"N	104°57'16.424"W	1.14	
11589.00	89.350	269.750	7236.26	3000.27	-427.51	-2995.21	40°11'51.746"N	104°57'17.532"W	0.94	
11674.00	91.500	270.850	7235.63	3085.25	-427.07	-3080.20	40°11'51.750"N	104°57'18.627"W	2.84	
11761.00	91.470	270.450	7233.38	3172.19	-426.08	-3167.16	40°11'51.759"N	104°57'19.748"W	0.46	
11847.00	91.470	270.460	7231.17	3258.15	-425.40	-3253.13	40°11'51.766"N	104°57'20.856"W	0.01	
11932.00	91.100	270.650	7229.27	3343.11	-424.58	-3338.11	40°11'51.774"N	104°57'21.951"W	0.49	
12018.00	89.560	269.470	7228.77	3429.09	-424.49	-3424.10	40°11'51.775"N	104°57'23.059"W	2.26	
12103.00	88.760	268.700	7230.02	3514.08	-425.84	-3509.08	40°11'51.761"N	104°57'24.154"W	1.31	
12188.00	88.450	268.290	7232.09	3599.05	-428.08	-3594.03	40°11'51.739"N	104°57'25.249"W	0.60	
12273.00	88.350	267.520	7234.46	3683.99	-431.18	-3678.94	40°11'51.708"N	104°57'26.343"W	0.91	
12358.00	89.470	268.070	7236.08	3768.94	-434.45	-3763.86	40°11'51.676"N	104°57'27.437"W	1.47	
12443.00	89.440	267.880	7236.89	3853.92	-437.45	-3848.80	40°11'51.646"N	104°57'28.532"W	0.23	
12529.00	89.470	268.580	7237.70	3939.90	-440.11	-3934.75	40°11'51.620"N	104°57'29.640"W	0.81	
12614.00	88.610	268.000	7239.13	4024.87	-442.65	-4019.70	40°11'51.595"N	104°57'30.734"W	1.22	
12699.00	89.160	267.940	7240.78	4109.83	-445.66	-4104.63	40°11'51.565"N	104°57'31.829"W	0.65	
12873.00	87.870	267.580	7245.29	4283.71	-452.46	-4278.44	40°11'51.497"N	104°57'34.069"W	0.77	Last BHI MWD+IFR Surveys
12942.00	87.870	267.580	7247.86	4352.63	-455.37	-4347.33	40°11'51.468"N	104°57'34.956"W	0.00	Projection to Bit

HOLE & CASING SECTIONS - Ref Wellbore: BAREFOOT 32C-25HZ AWP Ref Wellpath: BAREFOOT 32C-25HZ AWP

String/Diameter	Start MD [ft]	End MD [ft]	Interval [ft]	Start TVD [ft]	End TVD [ft]	Start N/S [ft]	Start E/W [ft]	End N/S [ft]	End E/W [ft]
13.5in Open Hole	17.00	1578.00	1561.00	17.00	1577.97	0.00	0.00	-0.78	-8.41
9.625in Casing Surface	17.00	1568.00	1551.00	17.00	1567.97	0.00	0.00	-0.86	-8.41
8.75in Open Hole	1578.00	7874.00	6296.00	1577.97	7238.95	-0.78	-8.41	-396.34	715.84
7in Casing Intermediate	17.00	7864.00	7847.00	17.00	7239.15	0.00	0.00	-395.89	725.83
6.125in Open Hole	7874.00	12942.00	5068.00	7238.95	7247.86	-396.34	715.84	-455.37	-4347.33

Actual Wellpath Report

BAREFOOT 32C-25HZ AWP

Page 6 of 7

REFERENCE WELLPATH IDENTIFICATION			
Operator	KERR-MCGEE OIL & GAS ONSHORE LP	Slot	SLOT#18 BAREFOOT 32C-25HZ (2062'FNL & 663'FEL, SEC.25)
Area	COLORADO	Well	BAREFOOT 32C-25HZ
Field	WELD COUNTY (KERR MCGEE)	Wellbore	BAREFOOT 32C-25HZ AWB
Facility	SEC.25-T3N-R68W		

TARGETS									
Name	MD [ft]	TVD [ft]	North [ft]	East [ft]	Grid East [US ft]	Grid North [US ft]	Latitude	Longitude	Shape
SEC.25-T3N-R68W SECTION LINES		0.00	0.00	0.00	3155268.77	1315781.51	40°11'55.972"N	104°56'38.933"W	polygon
BAREFOOT 32C-25HZ BHL (2450'FNL & 229'FWL, SEC.25) REV-2		7234.00	-452.43	-4373.08	3150898.80	1315301.70	40°11'51.497"N	104°57'35.288"W	point
BAREFOOT 32C-25HZ BHL ON PLAT (2450'FNL & 50'FWL, SEC.25) REV-1		7234.00	-452.43	-4552.08	3150719.82	1315300.58	40°11'51.497"N	104°57'37.595"W	point
BAREFOOT 32C-25HZ LAND BOX		7234.00	0.00	0.00	3155268.77	1315781.51	40°11'55.972"N	104°56'38.933"W	polygon

WELLPATH COMPOSITION - Ref Wellbore: BAREFOOT 32C-25HZ AWB					Ref Wellpath: BAREFOOT 32C-25HZ AWP	
Start MD [ft]	End MD [ft]	Positional Uncertainty Model	Log Name/Comment		Wellbore	
17.00	1504.00	Generic gyro - continuous (Standard)	MS ENERGY GYRO SURVEYS <117-1504>		BAREFOOT 32C-25HZ AWB	
1504.00	7809.00	NaviTrak (IFR)	BHI MWD+IFR SURVEYS 8 3/4" HOLE <1599-7809>		BAREFOOT 32C-25HZ AWB	
7809.00	12873.00	NaviTrak (IFR)	BHI MWD+IFR SURVEYS 6 1/8" HOLE <7449-12873>		BAREFOOT 32C-25HZ AWB	
12873.00	12942.00	Blind Drilling (std)	Projection to bit		BAREFOOT 32C-25HZ AWB	

Actual Wellpath Report

BAREFOOT 32C-25HZ AWP

Page 7 of 7

REFERENCE WELLPATH IDENTIFICATION			
Operator	KERR-MCGEE OIL & GAS ONSHORE LP	Slot	SLOT#18 BAREFOOT 32C-25HZ (2062'FNL & 663'FEL, SEC.25)
Area	COLORADO	Well	BAREFOOT 32C-25HZ
Field	WELD COUNTY (KERR MCGEE)	Wellbore	BAREFOOT 32C-25HZ AWB
Facility	SEC.25-T3N-R68W		

WELLPATH COMMENTS					
MD [ft]	Inclination [°]	Azimuth [°]	TVD [ft]	Comment	
17.00	0.000	294.010	17.00	Tie-On	
117.00	0.320	294.010	117.00	Begin GYRO Surveys	
1504.00	0.250	255.260	1503.97	Tie-Into GYRO Surveys	
1599.00	0.680	12.330	1598.97	Begin BHI MWD+IFR Surveys	
7864.00	90.942	267.344	7239.15	7" Casing Point	
12873.00	87.870	267.580	7245.29	Last BHI MWD+IFR Surveys	
12942.00	87.870	267.580	7247.86	Projection to Bit	