



Scale: 5" / 100'
Measured Depth Log

Well Name BAREFOOT 32C-25HZ

Location SENE 25 3N 68W 6 PM

State COLORADO

Country USA

API Number 05-123-3918700

Region DJ BASIN

Spud Date 5/19/2014

Surface Coordinates 2062' FNL 663' FEL

Bottom Hole Coordinates 2450' FNL 50' FWL

County WELD

Rig Number XTREME 8

AFE # 2092720

Field WATTENBERG

Drilling Completed 6/18/2014

Ground Elevation 4887'

K.B. Elevation 4904'

Logged Interval 7250' To 12942'

Total Depth 12942'

Formation CODELL

Type of Drilling Fluid FW LSND

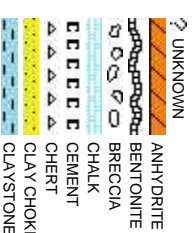
Company Anadarko

Address 1099 18TH, SU
DENVER, CO 8

Name RIKKI WITHER

Company COLUMBINE L

Address 2385 S. LIPAN
DENVER, CO 8



Operator

ITE 1800
0202

Geologist

SPOON, JERAMY MURRAY
OGGING INC

ST
0223

Rock Types

CONGLOMERATE	MARLSTONE	SHALY SANDSTONE
DOLomite	METAMORPHIC	SHALY SILTSTONE
DOLomitic LIMESTONE	NO SAMPLE	SILTY SHALE
GRANITE	SALT	SILTSTONE
GYPsum	SANDSTONE	TILL
IGNEOUS	SALT-PEPPER SANc	TUFF
SIDERITE or LIMONITE	SHALE	WELDED TUFF
LIMESTONE	SHALE COLORED	
	SHALE GRAY	

Accessories

Fossils	GASTROPOD	ARGILLITE GRAIN	HEAVY MINERAL	Stringer
INOCERAMUS	B BENTONITE	K KAOLIN	ANHYDRITE STRINGER	BENTONITE STRINGER
ALGAE	O OOLITE	M MARCASITE	COAL STRINGER	DOLOMITE STRINGER
AMPHIPORA	O OSTRACOD	BRECCIA FRAGMENTS	MINERAL CRYSTALS	GYPSUM STRINGER
BELEMNITE	P PELECYPOD	CARBONACEOUS FLAKES	CHERT	LIMESTONE STRINGER
BIOCLASTIC	P PELLET	CHTDK	THIN BEDS	MARLSTONE (CALC) STRG
BRACHIOPOD	P PISOLITE	COAL - THIN BEDS	DOLOMITIC	MARLSTONE (DOL) STRG
BRYOZOA	PLANT REMAINS	FELDSPAR	FERRUGINOUS PELLET	SANDY SHALE STRINGER
CEPHALOPOD	PLANT SPORES	FELDSPAR	FERRUGINOUS PELLET	
CORAL	SCAPHOPOD	FELDSPAR	FERRUGINOUS PELLET	
CRINOID	STROMATOPOROID	FELDSPAR	FERRUGINOUS PELLET	
ECHINOID		FELDSPAR	FERRUGINOUS PELLET	
Minerals	FISH	FERRUGINOUS	SUCCEOUS	
FORAMINIFERA	ANHYDRITIC	GLAUCONITE	SILTY	
F FOSSIL	ARGILLACEOUS	GYPSIFEROUS	TUFFACEOUS	

Other Symbols

Oil Show	P PINPOINT	WIRELINE TESTED - LEFT	E EARTHY
V VUGGY	FAULT	WIRELINE TESTED - RT	FM FINELY XLN
Engineering	FORMATION TOP	DRILL STEM TEST	GS GRAINSTONE
D DEAD	GAS SHOW	MN DEPTH	L LITHOGRAPHIC
EVEN	OIL SHOW	MN DEPTH	MX MICROXLN
Q QUESTIONABLE	BIT	MN DEPTH UP	MS MUDSTONE
SPOTTED STAINING	CONNECTION (UP)	MN DEPTH (DOWN)	PS PACKSTONE
Porosity	CONNECTION GAS	NORMAL FAULT	R ROUNDED
E EARTHY	CONNECTION GAS (LEFT)	OVERTURNED STRATA	B SUBANG
F FENESTRAL	TRIP GAS	REVERSE FAULT	P SUBRAND
F FRACTURE	TRIP GAS (LEFT)	CASING	Textures
INTERCRYSTALLINE	DOWN TIME GAS	SIDEWALL CORE (LEFT)	P POOR
INTEROOLITIC	DOWN TIME GAS (LEFT)	SIDEWALL CORE (RIGHT)	BS BOUNDSTONE
M MOLDIC	CORE - LOST	SLIDE	C CHALKY
O ORGANIC	CORE - RECOVERED	SURVEY	CX CRYPTOXLN
			Sorting
			M MODERATE
			W WELL

Slide/Rotate

ROP
ROF
GAMMA

Bit Data
Bit #: 2
Type: SD611
Size: 8.75
Jets: 6X18
S/N: JJ2938

Total Gas
GAS

Columbine Logging One Man Rigged
Up 22:18 hrs 06/12/2014 With
Bloodhound Unit # 0313
Logging Began @ 02:45 hrs 06/14/2014
at 7250' MD

Depth Labels

% Lith

Well Bore
TVD

Oil Show

Images

MUD: 10.0 WT 4.1 VIS

137api

Niobrara B Chalk Top
7300' MD / 7009' TVD

Niobrara C Chalk
7391' MD / 7074' TVD

4565u

6277u

1829u

944u

GA

7.210 7.220 7.230 7.240 7.250 7.260 7.270 7.280 7.290 7.300 7.310 7.320 7.330 7.340 7.350 7.360 7.370 7.380 7.390 7.400

6900

6900

Acetone was used
as the cutting agent
with the dimple filled
to the rim.
The ratings are based
on 7 descriptors:
None, Slight trace, Trace,
Fair, Moderate, Good, and
Excellent. The descriptor
used is based on the loggers
observations and best
judgment of brilliance,
color and longevity of the cut.

MD: 7,272 '
TVD: 6,987.81 '
Inclination: 38.62 °
Azimuth: 267 °
VS: -1,231.8 '

MD: 7,315 '
TVD: 7,020.29 '
Inclination: 43.23 °
Azimuth: 266.45 °
VS: -1,203.65 '

MD: 7,357 '
TVD: 7,050.21 '
Inclination: 45.89 °
Azimuth: 266.99 °
VS: -1,174.2 '

MD: 7,400 '
TVD: 7,079.9 '
Inclination: 46.2 °
Azimuth: 266.99 °
VS: -1,143.1 '

MRLST: dk-med gy, sb blk, med sft-fm, silty
tex, vf gr, mod srt; CHK: med gy-gy brn, sb
blk, sft, wxy-rthy lstr, f gr, mod srt; SLTY SH:
med-dk gy, sb blk, sft-fm, wxy-rthy lstr, vf gr,
w srt, tr bent, stmg mky bl cut, bri bl ring

CHK: med gy-gy brn, sb blk, sft, wxy-rthy
lstr, f gr, mod srt; MRLST: dk-med gy, sb
blk, med sft-fm, silty tex, vf gr, mod srt, stmg
mky bl cut, bri bl ring

CHK: med gy-gy brn, sb blk, sft, wxy-rthy
lstr, f gr, mod srt; MRLST: dk-med gy, sb
blk, med sft-fm, silty tex, vf gr, mod srt, com
mky bl cut, bri bl ring

7500

83
82
81
80
79
78
77
76
75
74
73
72
71
70
69
68
67
66
65
64
63
62
61
60
59
58
57
56
55
54
53
52
51
50
49
48
47
46
45
44
43
42
41
40
39
38
37
36
35
34
33
32
31
30
29
28
27
26
25
24
23
22
21
20
19
18
17
16

Oil Show

83
82
81
80
79
78
77
76
75
74
73
72
71
70
69
68
67
66
65
64
63
62
61
60
59
58
57
56
55
54
53
52
51
50
49
48
47
46
45
44
43
42
41
40
39
38
37
36
35
34
33
32
31
30
29
28
27
26
25
24
23
22
21
20
19
18
17
16

Oil Show

83
82
81
80
79
78
77
76
75
74
73
72
71
70
69
68
67
66
65
64
63
62
61
60
59
58
57
56
55
54
53
52
51
50
49
48
47
46
45
44
43
42
41
40
39
38
37
36
35
34
33
32
31
30
29
28
27
26
25
24
23
22
21
20
19
18
17
16

Oil Show

83
82
81
80
79
78
77
76
75
74
73
72
71
70
69
68
67
66
65
64
63
62
61
60
59
58
57
56
55
54
53
52
51
50
49
48
47
46
45
44
43
42
41
40
39
38
37
36
35
34
33
32
31
30
29
28
27
26
25
24
23
22
21
20
19
18
17
16

Oil Show

83
82
81
80
79
78
77
76
75
74
73
72
71
70
69
68
67
66
65
64
63
62
61
60
59
58
57
56
55
54
53
52
51
50
49
48
47
46
45
44
43
42
41
40
39
38
37
36
35
34
33
32
31
30
29
28
27
26
25
24
23
22
21
20
19
18
17
16

Oil Show

83
82
81
80
79
78
77
76
75
74
73
72
71
70
69
68
67
66
65
64
63
62
61
60
59
58
57
56
55
54
53
52
51
50
49
48
47
46
45
44
43
42
41
40
39
38
37
36
35
34
33
32
31
30
29
28
27
26
25
24
23
22
21
20
19
18
17
16

Oil Show

83
82
81
80
79
78
77
76
75
74
73
72
71
70
69
68
67
66
65
64
63
62
61
60
59
58
57
56
55
54
53
52
51
50
49
48
47
46
45
44
43
42
41
40
39
38
37
36
35
34
33
32
31
30
29
28
27
26
25
24
23
22
21
20
19
18
17
16

Oil Show

83
82
81
80
79
78
77
76
75
74
73
72
71
70
69
68
67
66
65
64
63
62
61
60
59
58
57
56
55
54
53
52
51
50
49
48
47
46
45
44
43
42
41
40
39
38
37
36
35
34
33
32
31
30
29
28
27
26
25
24
23
22
21
20
19
18
17
16

Oil Show

83
82
81
80
79
78
77
76
75
74
73
72
71
70
69
68
67
66
65
64
63
62
61
60
59
58
57
56
55
54
53
52
51
50
49
48
47
46
45
44
43
42
41
40
39
38
37
36
35
34
33
32
31
30
29
28
27
26
25
24
23
22
21
20
19
18
17
16

Oil Show

83
82
81
80
79
78
77
76
75
74
73
72
71
70
69
68
67
66
65
64
63
62
61
60
59
58
57
56
55
54
53
52
51
50
49
48
47
46
45
44
43
42
41
40
39
38
37
36
35
34
33
32
31
30
29
28
27
26
25
24
23
22
21
20
19
18
17
16

Oil Show

83
82
81
80
79
78
77
76
75
74
73
72
71
70
69
68
67
66
65
64
63
62
61
60
59
58
57
56
55
54
53
52
51
50
49
48
47
46
45
44
43
42
41
40
39
38
37
36
35
34
33
32
31
30
29
28
27
26
25
24
23
22
21
20
19
18
17
16

Oil Show

83
82
81
80
79
78
77
76
75
74
73
72
71
70
69
68
67
66
65
64
63
62
61
60
59
58
57
56
55
54
53
52
51
50
49
48
47
46
45
44
43
42
41
40
39
38
37
36
35
34
33
32
31
30
29
28
27
26
25
24
23
22
21
20
19
18
17
16

Oil Show

83
82
81
80
79
78
77
76
75
74
73
72
71
70
69
68
67
66
65
64
63
62
61
60
59
58
57
56
55
54
53
52
51
50
49
48
47
46
45
44
43
42
41
40
39
38
37
36
35
34
33
32
31
30
29
28
27
26
25
24
23
22
21
20
19
18
17
16

Oil Show

83
82
81
80
79
78
77
76
75
74
73
72
71
70
69
68
67
66
65
64
63
62
61
60
59
58
57
56
55
54
53
52
51
50
49
48
47
46
45
44
43
42
41
40
39
38
37
36
35
34
33
32
31
30
29
28
27
26
25
24
23
22
21
20
19
18
17
16

Oil Show

83
82
81
80
79
78
77
76
75
74
73
72
71
70
69
68
67
66
65
64
63
62
61
60
59
58
57
56
55
54
53
52
51
50
49
48
47
46
45
44
43
42
41
40
39
38
37
36
35
34
33
32
31
30
29
28
27
26
25
24
23
22
21
20
19
18
17
16

Oil Show

83
82
81
80
79
78
77
76
75
74
73
72
71
70
69
68
67
66
65
64
63
62
61
60
59
58
57
56
55
54
53
52
51
50
49
48
47
46
45
44
43
42
41
40
39
38
37
36
35
34
33
32
31
30
29
28
27
26
25
24
23
22
21
20
19
18
17
16

Oil Show

83
82
81
80
79
78
77
76
75
74
73
72
71
70
69
68
67
66
65
64
63
62
61
60
59
58
57
56
55
54
53
52
51
50
49
48
47
46
45
44
43
42
41
40
39
38
37
36
35
34
33
32
31
30
29
28
27
26
25
24
23
22
21
20
19
18
17
16

Oil Show

83
82
81
80
79
78
77
76
75
74
73
72
71
70
69
68
67
66
65
64
63
62
61
60
59
58
57
56
55
54
53
52
51
50
49
48
47
46
45
44
43
42
41
40
39
38
37
36
35
34
33
32
31
30
29
28
27
26
25
24
23
22
21
20
19
18
17
16

Oil Show

83
82
81
80
79
78
77
76
75
74
73
72
71
70
69
68
67
66
65
64
63
62
61
60
59
58
57
56
55
54
53
52
51
50
49
48
47
46
45
44
43
42
41
40
39
38
37
36
35
34
33
32
31
30
29
28
27
26
25
24
23
22
21
20
19
18
17
16

Oil Show

83
82
81
80
79
78
77
76
75
74
73
72
71
70
69
68
67
66
65
64
63
62
61
60
59
58
57
56
55
54
53
52
51
50
49
48
47
46
45
44
43
42
41
40
39
38
37
36
35
34
33
32
31
30
29
28
27
26
25
24
23
22
21
20
19
18
17
16

Oil Show

83
82
81
80
79
78
77
76
75
74
73
72
71
70
69
68
67
66
65
64
63
62
61
60
59
58
57
56
55
54
53
52
51
50
49
48
47
46
45
44
43
42
41
40
39
38
37
36
35
34
33
32
31
30
29
28
27
26
25
24
23
22
21
20
19
18
17
16

Oil Show

83
82
81
80
79
78
77
76
75
74
73
72
71
70
69
68
67
66
65
64
63
62
61
60
59
58
57
56
55
54
53
52
51
50
49
48
47
46
45
44
43
42
41
40
39
38
37
36
35
34
33
32
31
30
29
28
27
26
25
24
23
22
21
20
19
18
17
16

Oil Show

83
82
81
80
79
78
77
76
75
74
73
72
71
70
69
68
67
66
65
64
63
62
61
60
59
58
57
56
55
54
53
52
51
50
49
48
47
46
45
44
43
42
41
40
39
38
37
36
35
34
33
32
31
30
29
28
27
26
25
24
23
22
21
20
19
18
17
16

Oil Show

83
82
81
80
79
78
77
76
75
74
73
72
71
70
69
68
67
66
65
64
63
62
61
60
59
58
57
56
55
54
53
52
51
50
49
48
47
46
45
44
43
42
41
40
39
38
37
36
35
34
33
32
31
30
29
28
27
26
25
24
23
22
21
20
19
18
17
16

Oil Show

83
82
81
80
79
78
77
76
75
74
73
72
71
70
69
68
67
66
65
64
63
62
61
60
59
58
57
56
55
54
53
52
51
50
49
48
47
46
45
44
43
42
41
40
39
38
37
36
35
34
33
32
31
30
29
28
27
26
25
24
23
22
21
20
19
18
17
16

Oil Show

83
82
81
80
79
78
77
76
75
74
73
72
71
70
69
68
67
66
65
64
63
62
61
60
59
58
57
56
55
54
53
52
51
50
49
48
47
46
45
44
43
42
41
40
39
38
37
36
35
34
33
32
31
30
29
28
27
26
25
24
23
22
21
20
19
18
17
16

Oil Show

83
82
81
80
79
78
77
76
75
74
73
72
71
70
69
68
67
66
65
64
63
62
61
60
59
58
57
56
55
54
53
52
51
50
49
48
47
46
45
44
43
42
41
40
39
38
37
36
35
34
33
32
31
30
29
28
27
26
25
24
23
22
21
20
19
18
17
16

Oil Show

83
82
81
80
79
78
77
76
75
74
73
72
71
70
69
68
67
66
65
64
63
62
61
60
59
58
57
56
55
54
53
52
51
50
49
48
47
46
45
44
43
42
41
40
39
38
37
36
35
34
33
32
31
30
29
28
27
26
25
24
23
22
21
20
19
18
17
16

Oil Show

83
82
81
80
79
78
77
76
75
74
73
72
71
70
69
68
67
66
65
64
63
62
61
60
59
58
57
56
55
54
53
52
51
50
49
48
47
46
45
44
43
42
41
40
39
38
37
36
35
34
33
32
31
30
29
28
27
26
25
24
23
22
21
20
19
18
17
16

Oil Show

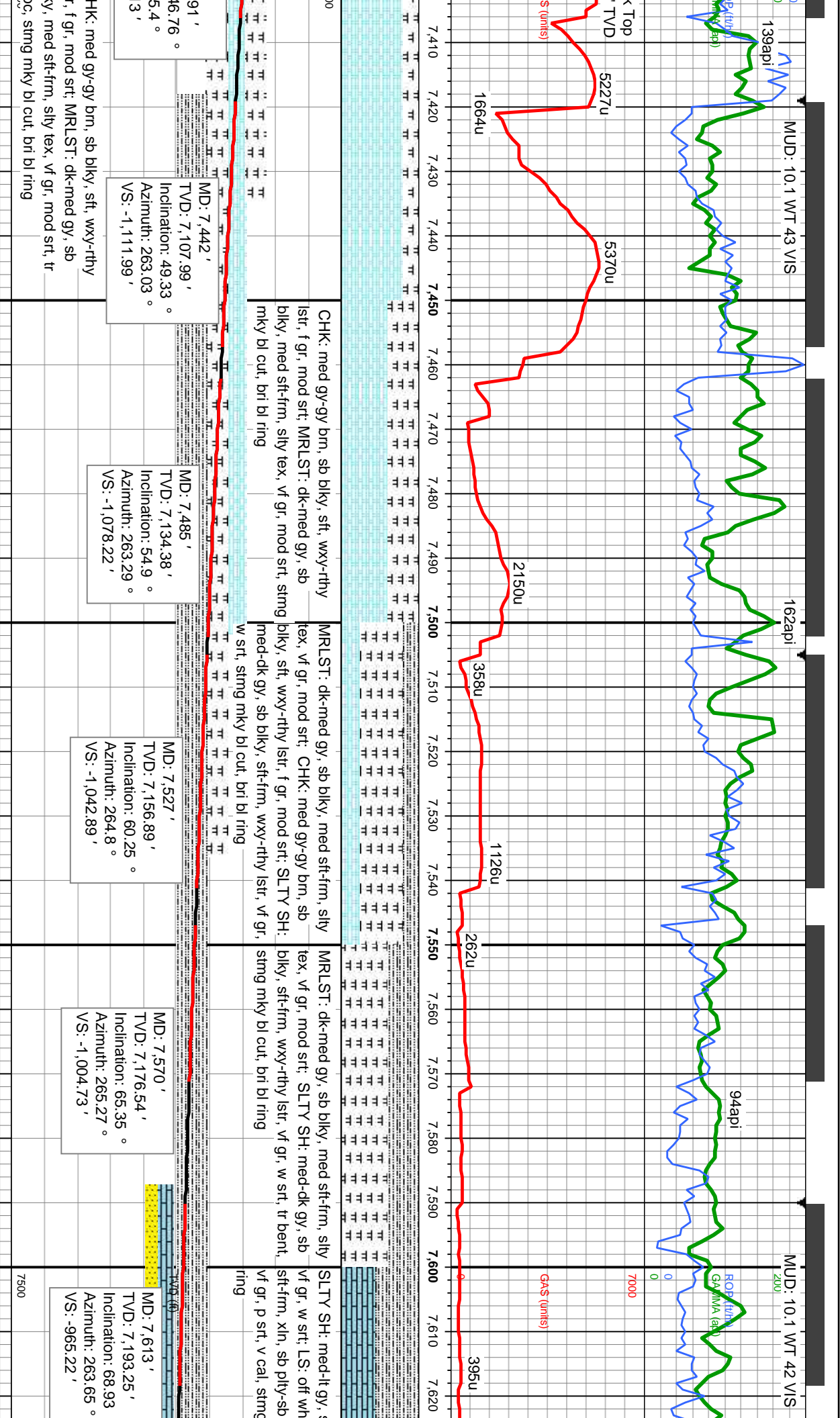
83
82
81
80
79
78
77
76
75
74
73
72
71
70
69
68
67
66
65
64
63
62
61
60
59
58
57
56
55
54
53
52
51
50
49
48
47
46
45
44
43
42
41
40
39
38
37
36
35
34
33
32
31
30
29
28
27
26
25
24
23
22
21
20
19
18
17
16

Oil Show

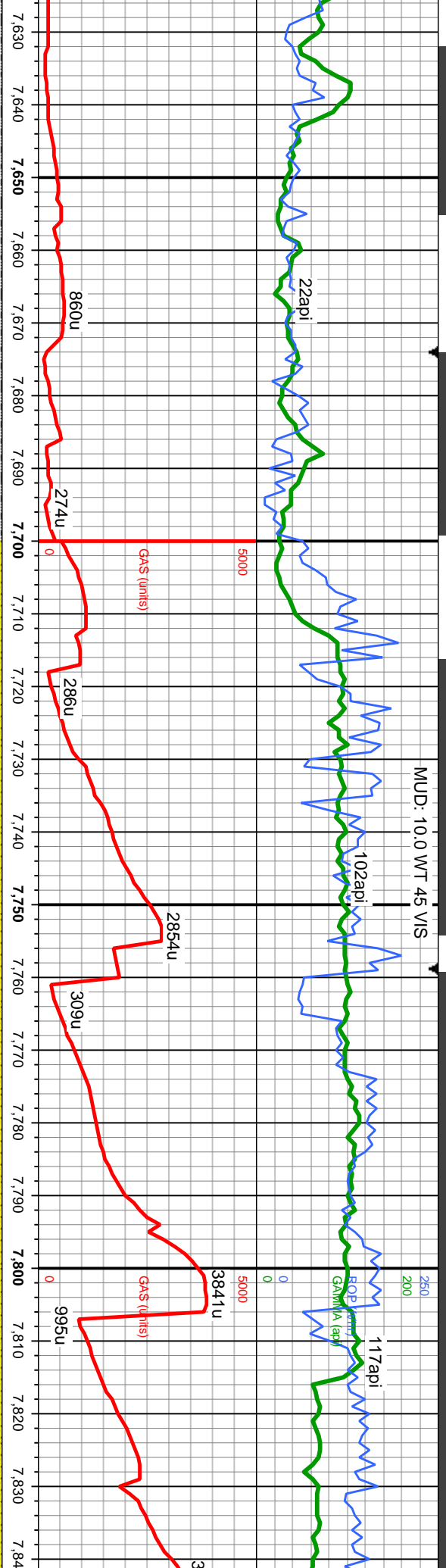
83
82
81
80
79
78
77
76
75
74
73
72
71
70
69
68
67
66
65
64
63
62
61
60
59
58
57
56
55
54
53
52
51
50
49
48
47
46
45
44
43
42
41
40
39
38
37
36
35
34
33
32
31
30
29
28
27
26
25
24
23
22
21
20
19
18
17
16

Oil Show

83
82
81
80
79
78
77
76
75
7



MUD: 10.0 WT 45 VIS



sb blkly, sft, wxy-rthy lstr, -wh crm, lt gy, mod blkly, occ blkly, wxy tex, mky bri bl cut, bri bl

LS: off wh-wh crm, lt gy, mod sft-frm, xln, sb ply-sb blkly, occ blkly, wxy tex, vf gr, p srt, v cal; SLTY SH: med-lt gy, sb blkly, sft, wxy-rthy lstr, vf gr, w srt, stmg mky bri bl cut, bri bl ring

LS: off wh-wh crm, lt gy, mod sft-frm, xln, sb ply-sb blkly, occ blkly, wxy tex, vf gr, p srt, v cal; SS: dk-med gy-gy brn, s&p, occ clr gr, med hd-frm, sb rnd, f gr, v w srt, mod fri, sl cal; stmg mky bri bl cut, bri bl ring

SS: dk-med gy-gy brn, s&p, occ clr gr, med hd-frm, sb rnd, f gr, v w srt, mod fri, sl cal; LS: off wh-wh crm, lt gy, mod sft-frm, xln, sb ply-sb blkly, occ blkly, wxy tex, vf gr, p srt, v cal, stmg mky bri bl cut, bri bl ring

SS: dk-med gy-gy brn, s&p, occ clr gr, med hd-frm, sb rnd, f gr, v w srt, mod fri, sl cal; stmg mky bri bl cut, bri bl ring

MD: 7,665 '
TVD: 7,207.41 '
Inclination: 71.65 °
Azimuth: 264.33 °
VS: -925.81 '

MD: 7,698 '
TVD: 7,219.93 '
Inclination: 74.48 °
Azimuth: 265.27 °
VS: -884.77 '

MD: 7,740 '
TVD: 7,230.03 '
Inclination: 77.69 °
Azimuth: 265.75 °
VS: -844.06 '

MD: 7,783 '
TVD: 7,237.16 '
Inclination: 83.21 °
Azimuth: 265.94 °
VS: -801.72 '

MD: 7,809 '
TVD: 7,238.99 '
Inclination: 88.73 °
Azimuth: 266.92 °
VS: -775.82 '



06/14-17/2014

MINDEPTH

ROP SCALE CHANGE
0 - 600 ft/min

MUD: 10.2 WT 40 VIS

600
200

ROP (ft/h)
GAMMA (API)

40api

5000

GAS (units)

0

1373u

192u

0

4134u

38u

Curve TD at 7,874' MD
06/14/2014 @ 17:22 hrs
Resume drilling 01:38
06/17/2014

7,850

7,860

7,870

7,880

7,890

7,900

7,910

7,920

7,930

7,940

7,950

7,960

7,970

7,980

7,990

8,000

8,010

8,020

8,030

8,040

8,050

8,060

p, occ clr gr, med
t, mod fri, sl calc,

SS: dk-med gy-gy brn, s&p, occ clr gr, med hd frm,
sb rnd, f gr, v w srt, mod fri, sl calc; LS: off wh-wh
crm, lt gy, mod sft frm, xln, sb ply-sb blkly, occ blkly,
wxy tex, vf gr, p srt, v calc, sting mky bri bl cut, bri bl
ring

LS: off wh-wh crm, lt gy, mod sft frm, xl
blkly, occ blkly, wxy tex, vf gr, p srt, v ca
bri bl cut, bri bl ring

6900

TVD (ft)

MD: 7,949 '
TVD: 7,235.22 '
Inclination: 94.36 °
Azimuth: 268 °
VS: -635.95 '

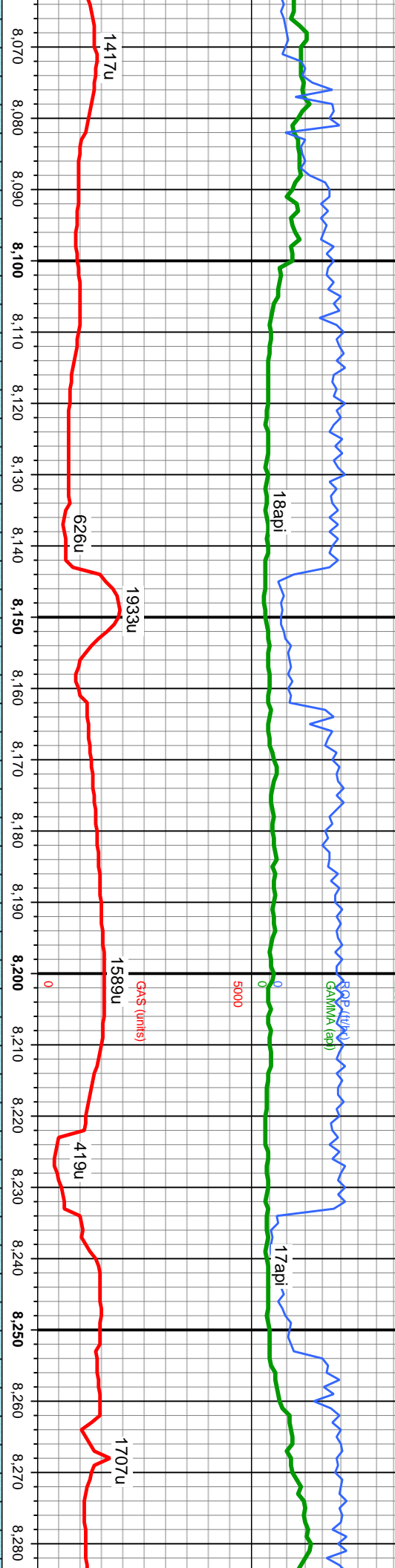
MD: 7,992 '
TVD: 7,232.43 '
Inclination: 93.07 °
Azimuth: 268.22 °
VS: -593.05 '

0



MUD: 10.1 WT 42 VIS

MUD: 9.9 WT 42 VIS



n, sb ply-sb
c, sting mky

LS: off wh-wh crm, lt gy, mod sft-frm, xln, sb ply-sb
biky, occ biky, wxy tex, vf gr, mod srt, v calc, sting
mky bri bl cut, bri bl ring

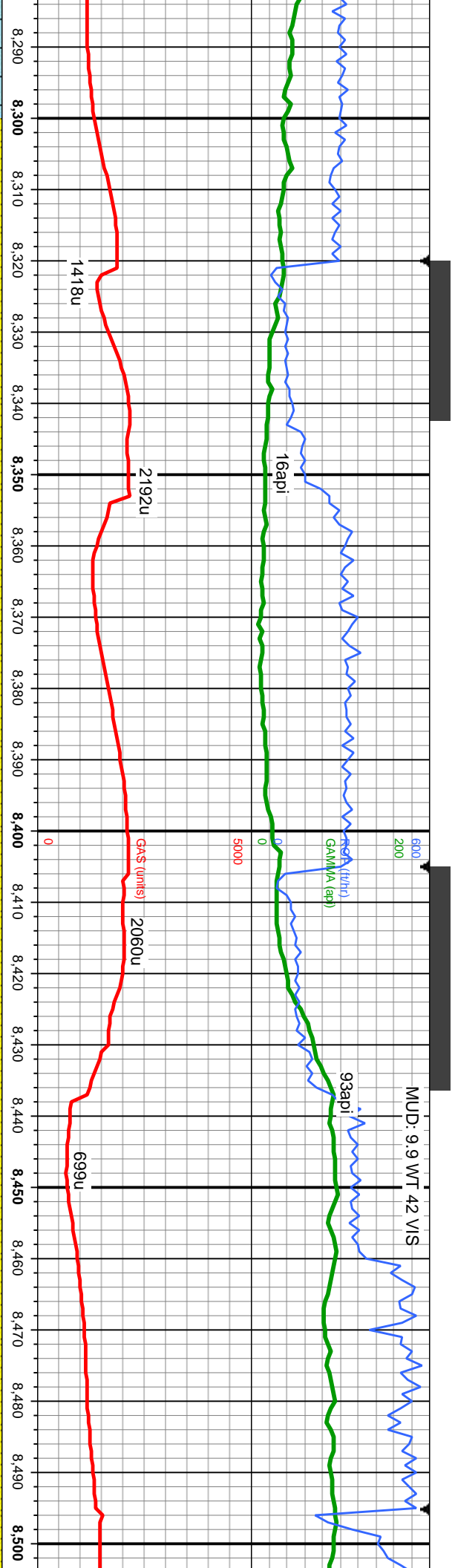
LS: off wh-wh crm, lt gy, mod sft-frm, xln, sb ply-sb
biky, occ biky, wxy tex, vf gr, mod srt, v calc, sting
mky bri bl cut, bri bl ring

MD: 8,078 '
TVD: 7,227.9 '
Inclination: 92.98 °
Azimuth: 268.33 °
VS: -507.17 '

MD: 8,163 '
TVD: 7,224.39 '
Inclination: 91.75 °
Azimuth: 269.02 °
VS: -422.24 '

MD: 8,251 '
TVD: 7,222.71 '
Inclination: 90.43 °
Azimuth: 268.14 °
VS: -334.26 '





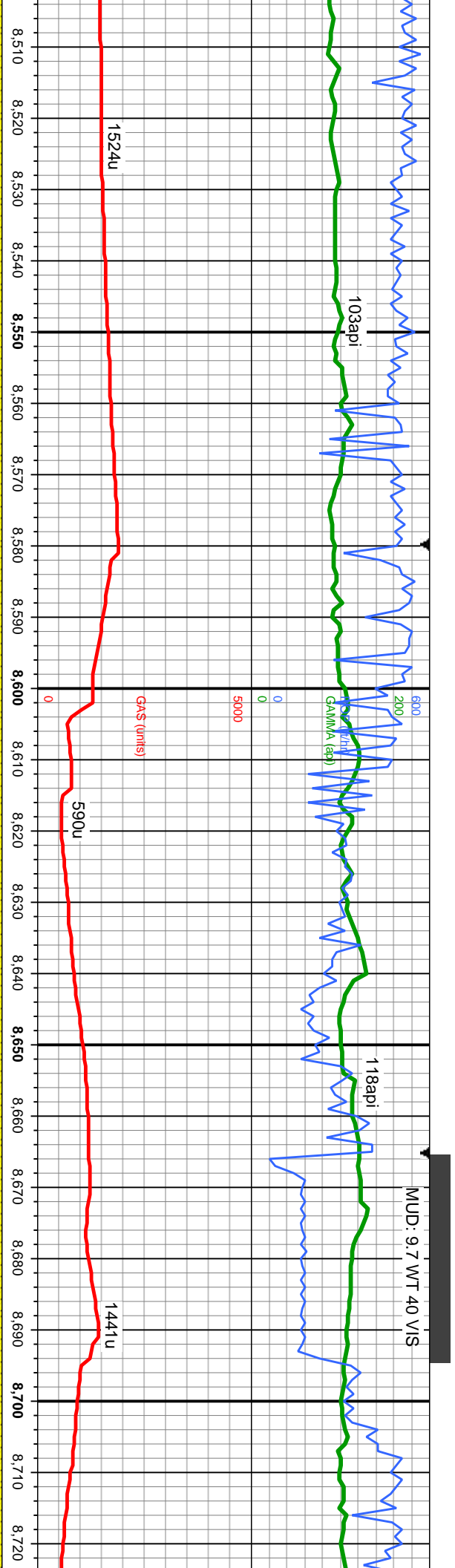
LS: off wh-wh cfm, lt gy, mod sft-frm, sb ply-sb blkly,
occ blkly, wxy tex, vf gr, mod srt, v calc; SS: dk-med
gy-gy brn, s&p, occ clr gr, med hd-frm, sb md, f gr, v
w srt, mod fri, sl calc, sting mky brl bl cut, brl bl ring

SS: dk-med gy-gy brn, s&p, occ clr gr, med hd-frm,
sb md, f gr, v w srt, mod fri, sl calc, sting mky bl cut,
bl ring

MD: 8,340 '
TVD: 7,222.81 '
Inclination: 89.44 °
Azimuth: 269.22 °
VS: -245.26 '

MD: 8,428 '
TVD: 7,225.16 '
Inclination: 87.5 °
Azimuth: 268.67 °
VS: -157.3 '





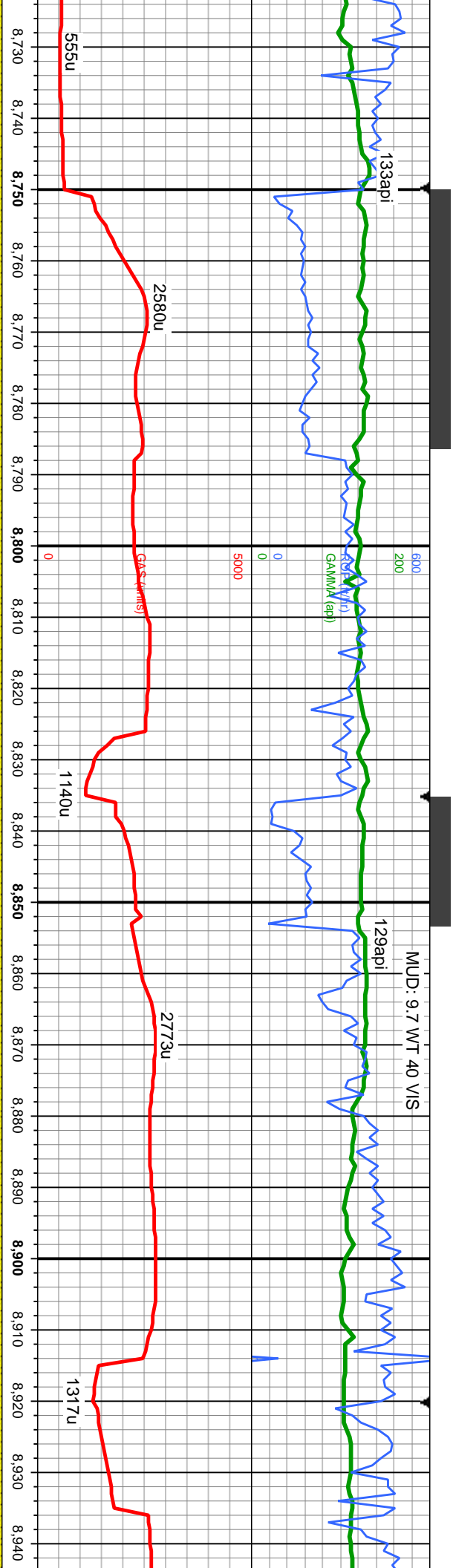
SS: dk-med gy-gy brn, rr s&p, occ clr trsl, med
hd-fm, sb rmd, f gr, v w srt, mod fri, sl calc, stmg
mky bl cut, bl ring

SS: dk-med gy-gy brn, rr s&p, occ clr trsl, med
hd-fm, sb rmd, f gr, v w srt, mod fri, sl calc, stmg
mky bl cut, bl ring

MD: 8,599 '
TVD: 7,232.82 '
Inclination: 87.37 °
Azimuth: 268.22 °
VS: 13.53 '

MD: 8,684 '
TVD: 7,237.07 '
Inclination: 86.89 °
Azimuth: 270 °
VS: 98.41 '





SS: dk-med gy-gy brn, tr s&p, occ clr tmsl, med
hd-fm, sb md, f gr, v w srt, mod fri, sl calc, stmg
mky bl cut, bl ring

SS: dk-med gy-gy brn, occ clr tmsl, med hd-fm, sb
rnd, f gr, v w srt, mod fri, sl calc, stmg mky bl cut, bl
ring

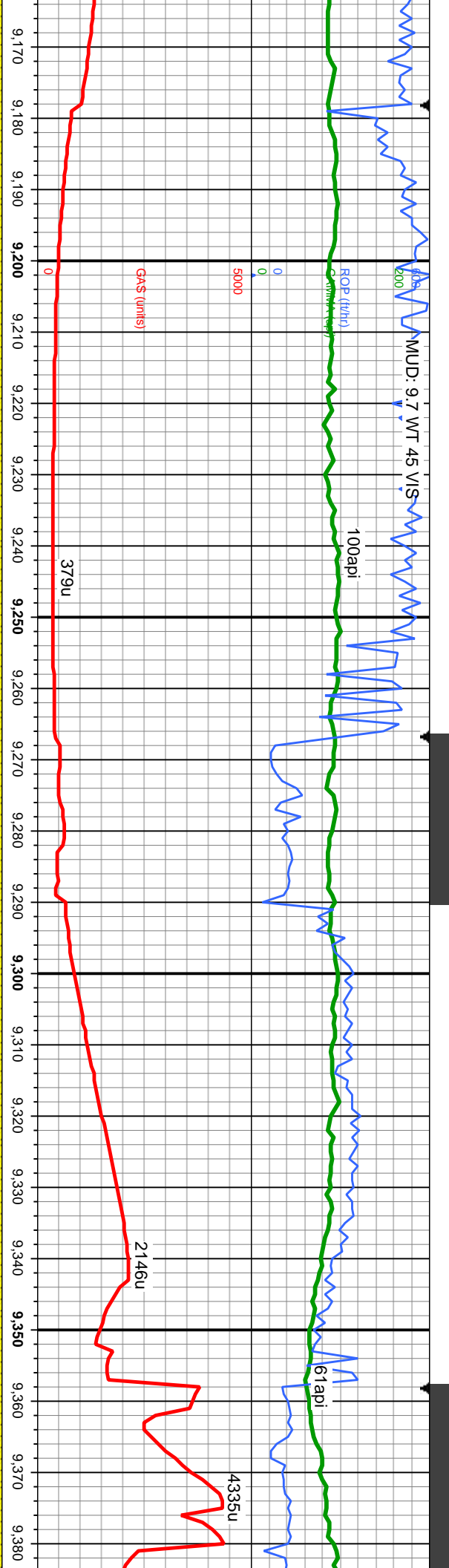
SS: dk-med gy-gy
rnd, f gr, v w srt, m
ring

MD: 8,769 '
TVD: 7,240.91 '
Inclination: 87.93 °
Azimuth: 271.91 °
VS: 183.25 '

MD: 8,854 '
TVD: 7,239.91 '
Inclination: 93.42 °
Azimuth: 273.09 °
VS: 268.01 '

MD: 8,939 '
TVD: 7,234.38 '
Inclination: 94. °
Azimuth: 273.54 '
VS: 352.54 '

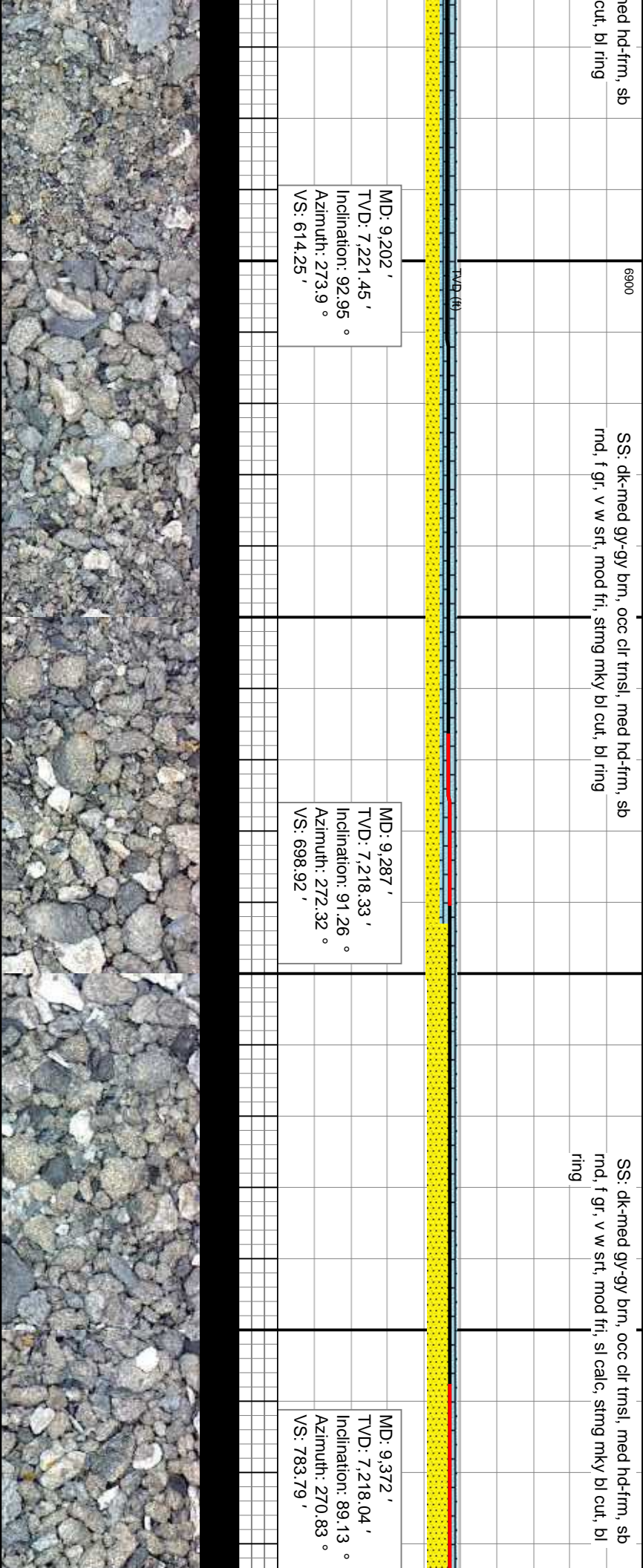


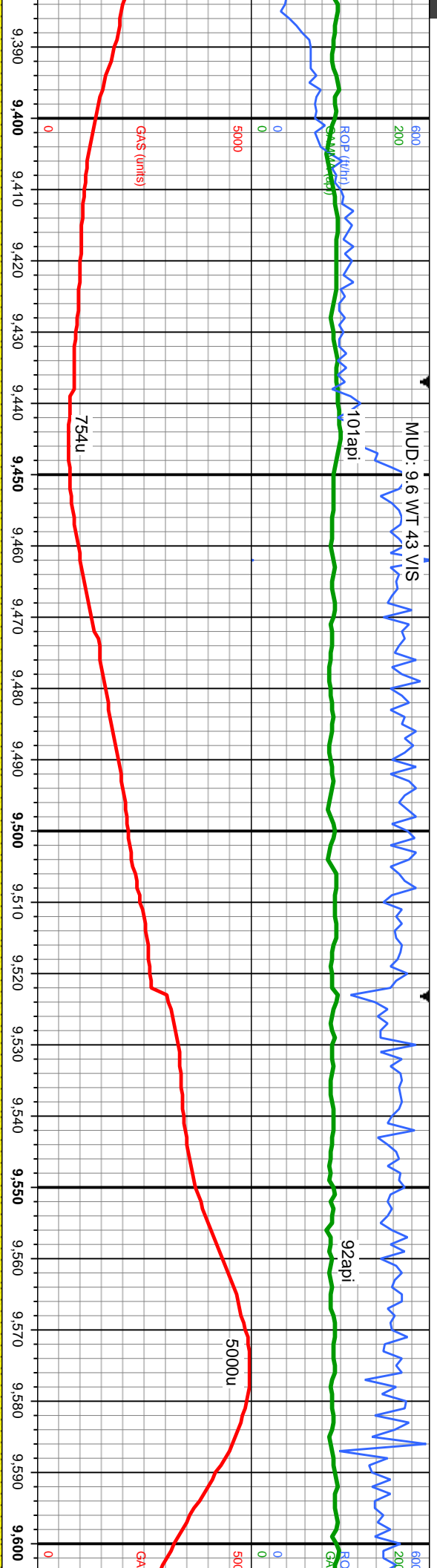


MD: 9,202 '
TVD: 7,221.45 '
Inclination: 92.95 °
Azimuth: 273.9 °
VS: 614.25 '

MD: 9,287 '
TVD: 7,218.33 '
Inclination: 91.26 °
Azimuth: 272.32 °
VS: 698.92 '

MD: 9,372 '
TVD: 7,218.04 '
Inclination: 89.13 °
Azimuth: 270.83 °
VS: 783.79 '



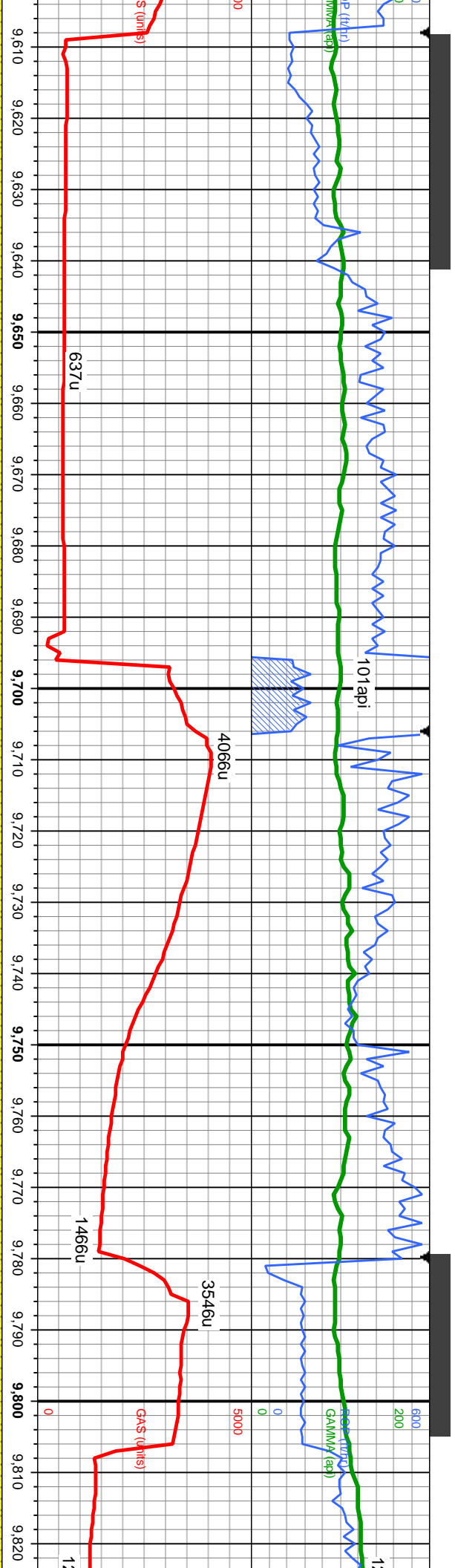


SS: dk-med gy-gy brn, tr s&p, occ clr trnsi, med
hd-frm, sb rnd, f gr, v w srt, mod fri, sl calc, sting
mky bl cut, bl ring

SS: dk-med gy-gy brn, tr s&p, occ clr trnsi, med hd-frm, sb
rnd, f gr, v w srt, mod fri, sl calc, sting mky bl cut, bl ring

MD: 9,542 '
TVD: 7,223.54 '
Inclination: 87.16 °
Azimuth: 269.08 °
VS: 953.64 '





SS: dk-med gy-gy brn, tr s&p, occ clr trnsl, med hd-firm, sb
rnd, f gr, w srt, clst sup, mod fri, sl calc cnt, string mky bl cut,
bl ring

SS: dk-med gy-gy brn, tr s&p, occ clr trnsl, med hd-firm, sb rnd, f
gr, w srt, clst sup, mod fri, sl calc cnt, string mky bl cut, bl ring

SS: d

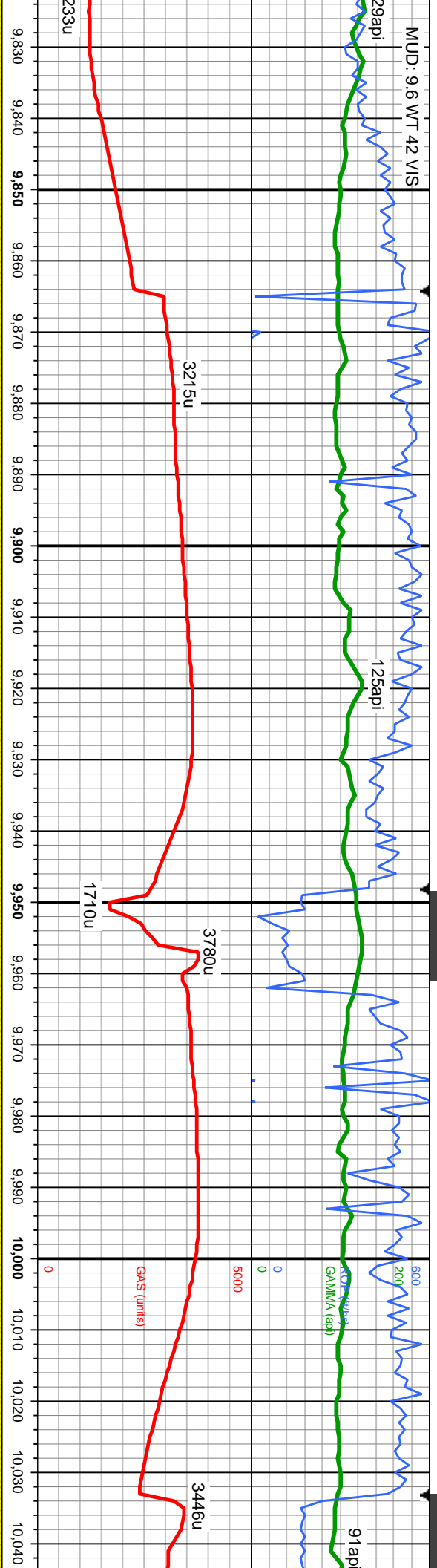
MD: 9,628 '
TVD: 7,227.25 '
Inclination: 87.93 °
Azimuth: 269.93 °
VS: 1,039.55 '

MD: 9,713 '
TVD: 7,230.48 '
Inclination: 87.68 °
Azimuth: 269.78 °
VS: 1,124.46 '

MD: 9,798 '
TVD: 7,232.45 '
Inclination: 89.66 °
Azimuth: 271.2 °
VS: 1,209.39 '



MUD: 9.6 WT 42 VIS



dk-med gy-gy brn, tr s&p, occ clr trnsi, med hd frm, sb rnd, st, clst sup, mod fri, sl calic cnt, sting mky bl cut, bl ring

MD: 9,882 '
TVD: 7,233.02 '
Inclination: 89.56 °
Azimuth: 270.69 °
VS: 1,293.31 '

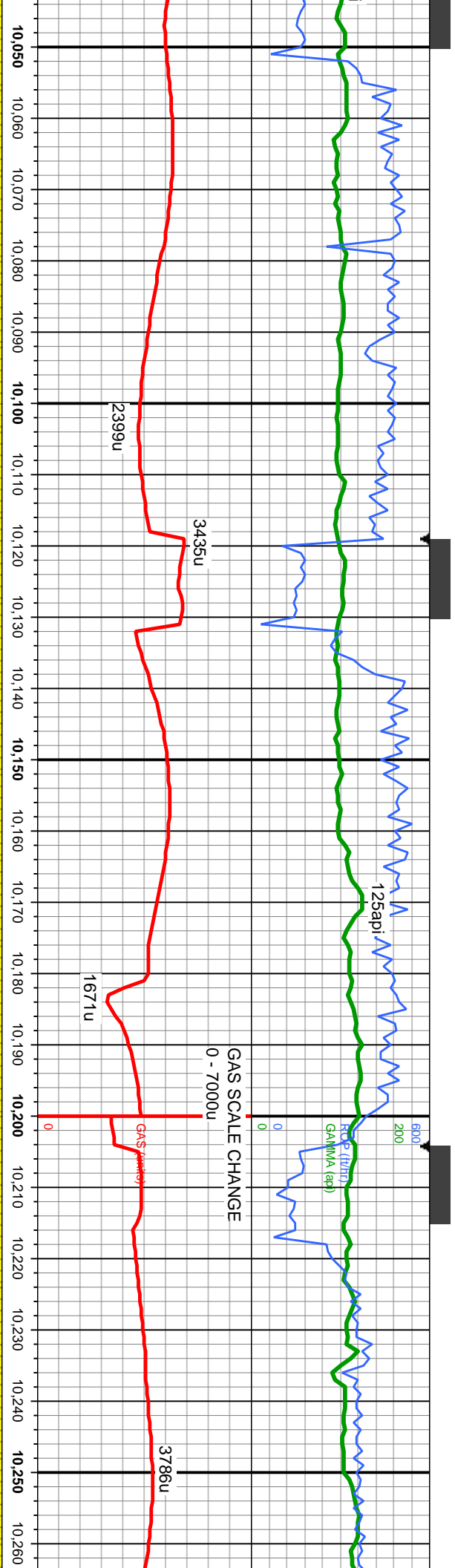
SS: dk-med gy-gy brn, tr s&p, occ clr trnsi, med hd frm, sb rnd, f gr, w st, clst sup, mod fri, sl calic cnt, sting mky bl cut, bl ring

MD: 9,967 '
TVD: 7,233.38 '
Inclination: 89.96 °
Azimuth: 270.64 °
VS: 1,378.25 '

SS: dk-med gy-gy brn, tr s gr, w st, clst sup, mod fri, s

MD: 9,967 '
TVD: 7,233.38 '
Inclination: 89.96 °
Azimuth: 270.64 °
VS: 1,378.25 '





10,050 10,060 10,070 10,080 10,090 10,100 10,110 10,120 10,130 10,140 10,150 10,160 10,170 10,180 10,190 10,200 10,210 10,220 10,230 10,240 10,250 10,260

MD: 10,052 '
D: 7,233.44 '
Inclination: 89.96 °
Azimuth: 269.68 °
VS: 1,463.22 '

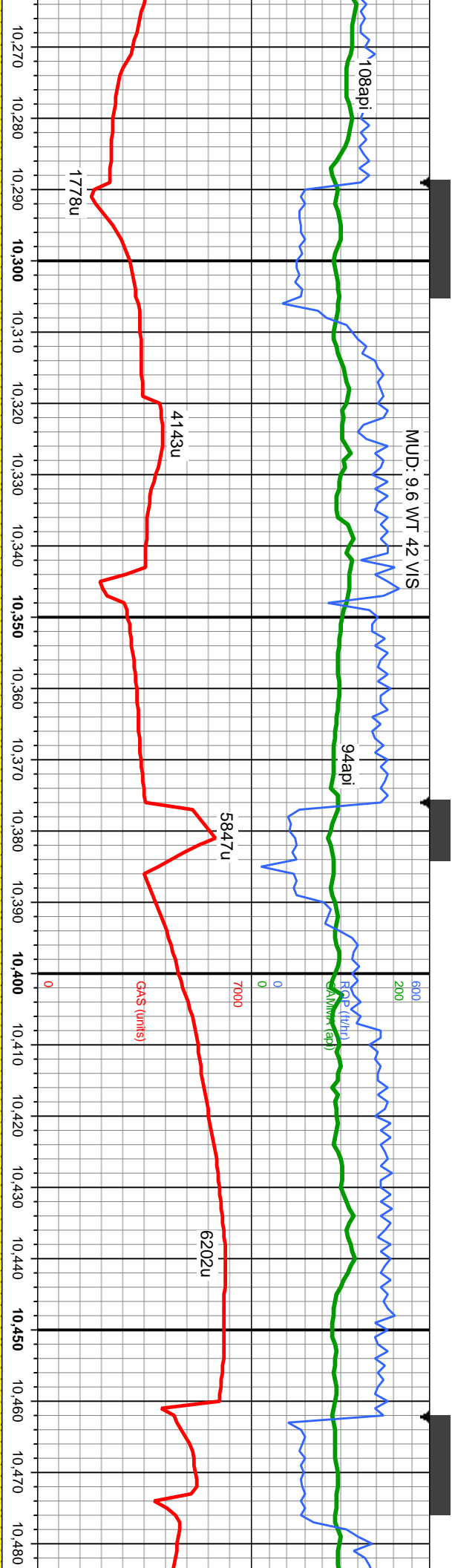
MD: 10,137 '
D: 7,234.02 '
Inclination: 89.26 °
Azimuth: 268.08 °
VS: 1,548.21 '

MD: 10,223 '
D: 7,234.83 '
Inclination: 89.66 °
Azimuth: 268.4 °
VS: 1,634.21 '

SS: dk-med gy-gy brn, tr s&p, occ clr trnsi, med hd-fm, sb rnd, f gr, w srt, clst sup, mod fri, sl calc cnt, tr pyr, strng mky bl cut, bl ring

SS: dk-med gy-gy brn, tr s&p, occ clr trnsi, r md, f gr, w srt, clst sup, mod fri, sl calc cnt, bl ring





MD: 10,310 '
TVD: 7,233.93 '
Inclination: 91.53 °
Azimuth: 269.89 °
VS: 1,721.19 '

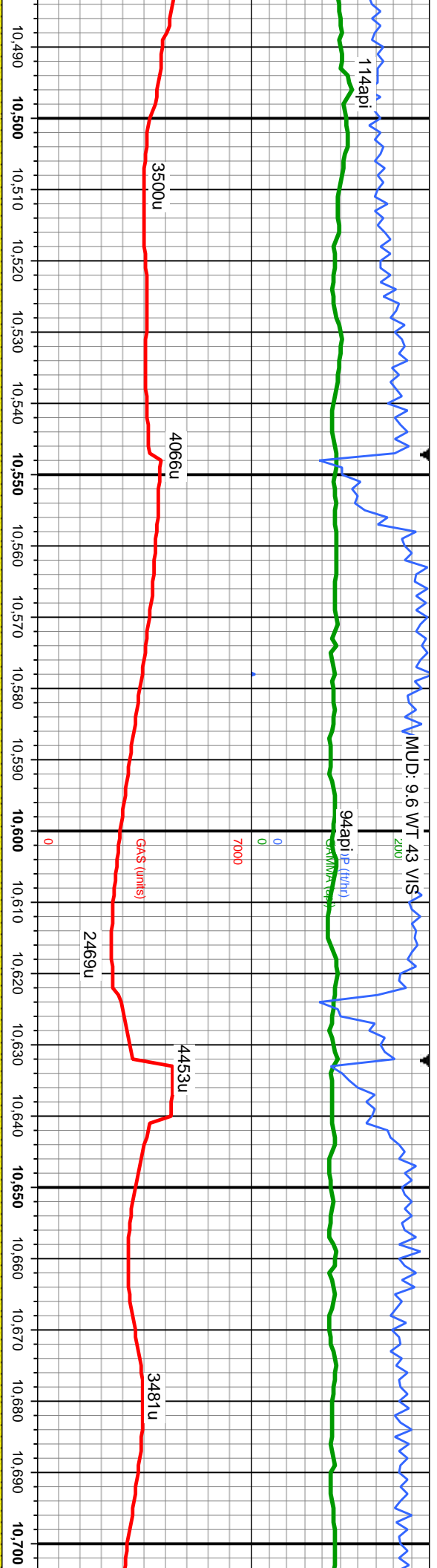
MD: 10,395 '
TVD: 7,231.45 '
Inclination: 91.81 °
Azimuth: 269.58 °
VS: 1,806.14 '

MD: 10,480 '
TVD: 7,229.7 '
Inclination: 91.81 °
Azimuth: 267.12 °
VS: 1,891.12 '

SS: dk-med gy-gy brn, tr s&p, occ clr trns, med hd-fm, sb
rd, f gr, w srt, clst sup, mod fri, sl calc cmt, stmg mky bl cut,
bl ring

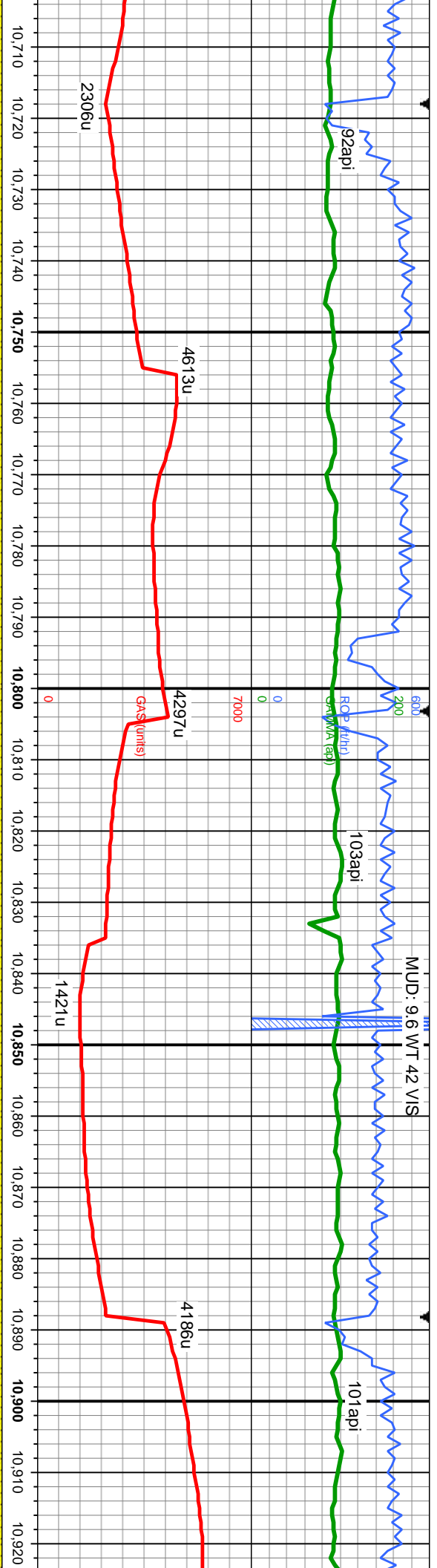
SS: dk-med gy-gy brn, tr s&p, occ clr trns, med hd-fm, sb md,
gr, w srt, clst sup, mod fri, sl calc cmt, stmg mky bl cut, bl ring





f	SS: dk-med gy-gy brn, tr s&p, occ cl trmsl, med hd-fm, sb rnd, f gr, w srt, clst sup, mod fri, sl calc cmt, string mky bl cut, bl ring		6900	SS: dk-med gy-gy brn, tr s&p, occ cl trmsl, med hd-fm, sb rnd, f gr, w srt, clst sup, mod fri, sl calc cmt, string mky bl cut, bl ring		
	TVD (ft)					
	MD: 10,566 ' TVD: 7,228.94 ' Inclination: 90.58 ° Azimuth: 268.34 ° VS: 1,977.11 ' 4 ' 0.49 ° .96 °					
	MD: 10,651 ' TVD: 7,228.06 ' Inclination: 90.61 ° Azimuth: 268.43 ° VS: 2,062.11 ' 7500					





SS: dk-med gy-gy brn, tr s&p, occ clr tmsh, med hd-fm, sb
rnd, f gr, w srt, cl sup, mod fri, sl calc cnt, tr lmsl, stmg
mky bl cut, bl ring

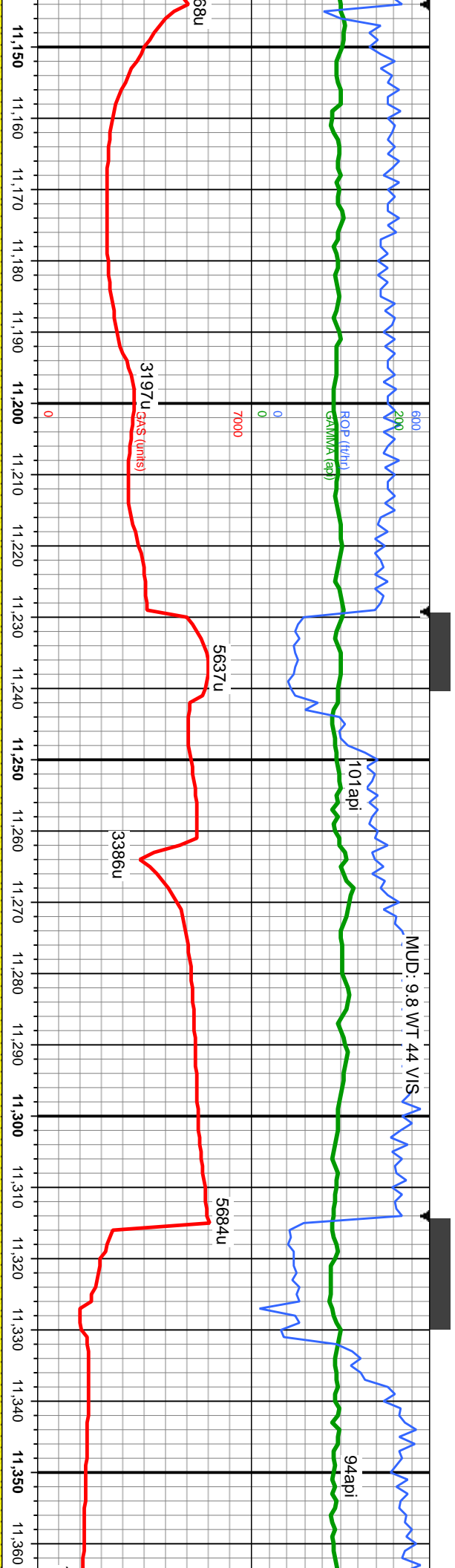
SS: dk-med gy-gy brn, tr s&p, occ clr tmsh, med hd-fm, sb md, f
gr, w srt, cl sup, mod fri, sl calc cnt, stmg mky bl cut, bl ring

MD: 10,736 '
TVD: 7,227.36 '
Inclination: 90.33 °
Azimuth: 268.07 °
VS: 2,147.1 '

MD: 10,821 '
TVD: 7,227.42 '
Inclination: 89.59 °
Azimuth: 267.45 °
VS: 2,232.09 '

MD: 10,907 '
TVD: 7,228.88 '
Inclination: 88.46 °
Azimuth: 266.48 °
VS: 2,318.04 '





p, occ clr trnsl, med hd frm, sb md, f gr,
cent, sl tr pyr, stmg mky bl cut, bl ring

6900

SS: dk-med gy-gy brn, tr s&p, occ clr trnsl, med hd frm,
sb md, f gr, w srt, cl sup, mod fri, sl calc, stmg mky bl
cut, bl ring

SS: dk-med gy-gy brn, tr s&p, occ clr trnsl, n
gr, w srt, cl sup, mod fri, sl calc, stmg mky bl

TVD (ft)

MD: 11,163 '
TVD: 7,232.89 '
Inclination: 89.66 °
Azimuth: 267.53 °
VS: 2,573.89 '

7500

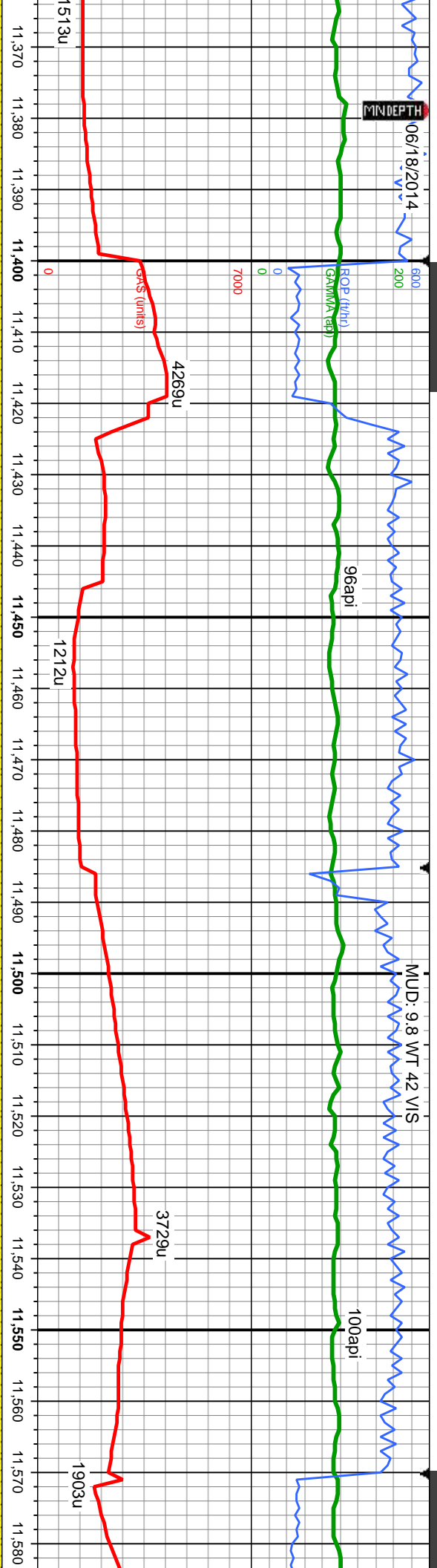
MD: 11,248 '
TVD: 7,233.95 '
Inclination: 88.92 °
Azimuth: 268.26 °
VS: 2,658.87 '

MD: 11,333 '
TVD: 7,235.27 '
Inclination: 89.29 °
Azimuth: 268.82 °
VS: 2,743.86 '



06/18/2014

MINDEPTH



med hd-firm, sb md, f
cut, bl ring

6900

SS: dk-med gy-gy brn, occ cl tmsl, med hd-firm, sb md, f gr, w
sft, cl sup, mod fri, sl calc, stmg mky bl cut, bl ring

SS: dk-med gy-gy brn, occ cl tmsl, med hd-firm, sb md, f gr, w
sft, cl sup, mod fri, sl calc, rr pyr, stmg mky bl cut, bl ring

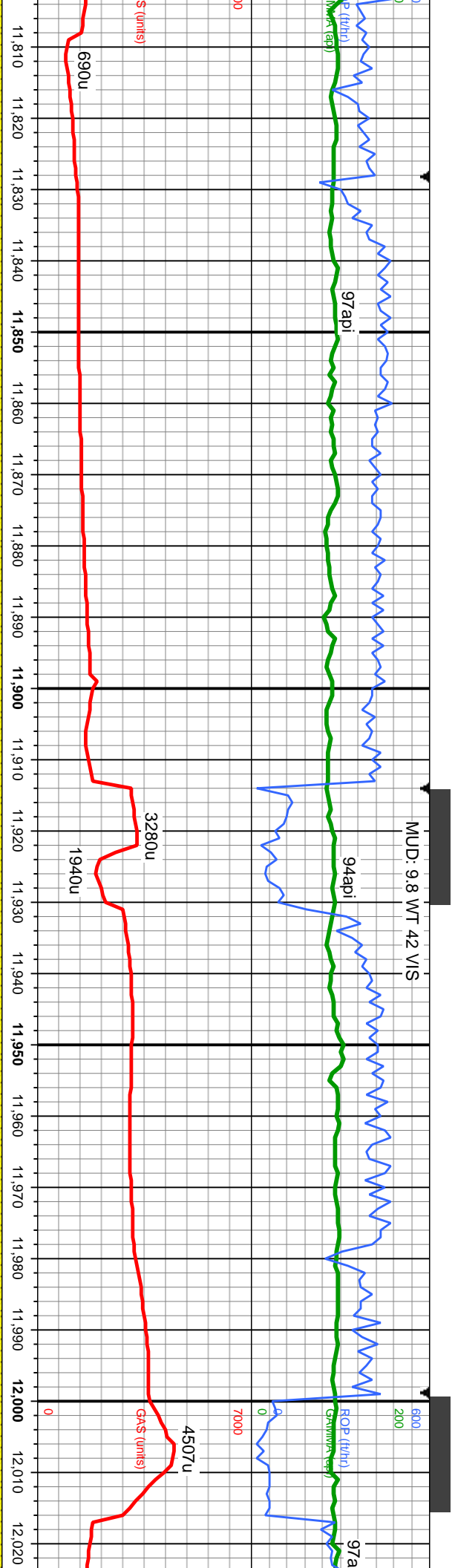
TVD (ft)

MD: 11,418 '
TVD: 7,235.58 '
Inclination: 90.3 °
Azimuth: 269.81 °
VS: 2,828.85 '

MD: 11,503 '
TVD: 7,235.56 '
Inclination: 89.72 °
Azimuth: 269.03 °
VS: 2,913.84 '

MD:
TVD
Incl
Azim
VS:





SS: dk-med gy-gy brn, tr s&p, occ clr tmsl, med hd frm, sb md, f
gr, w srt, cl sup, mod fri, sl calc, string mky bl cut, bl ring

SS: dk-med gy-gy brn, tr s&p, occ clr tmsl, med hd frm, sb md, f
gr, w srt, cl sup, mod fri, sl calc, string mky bl cut, bl ring

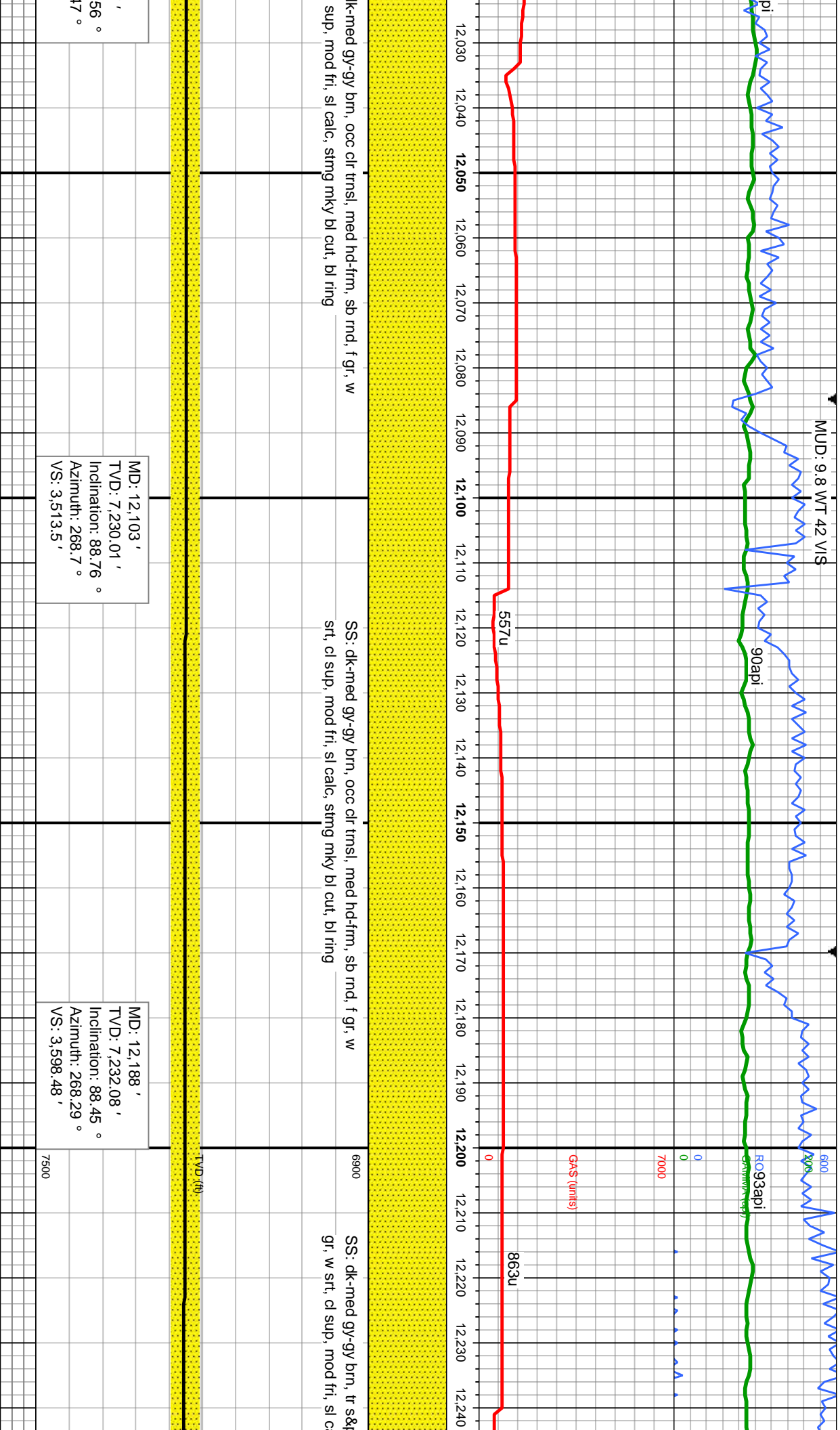
SS: c
srt, cl

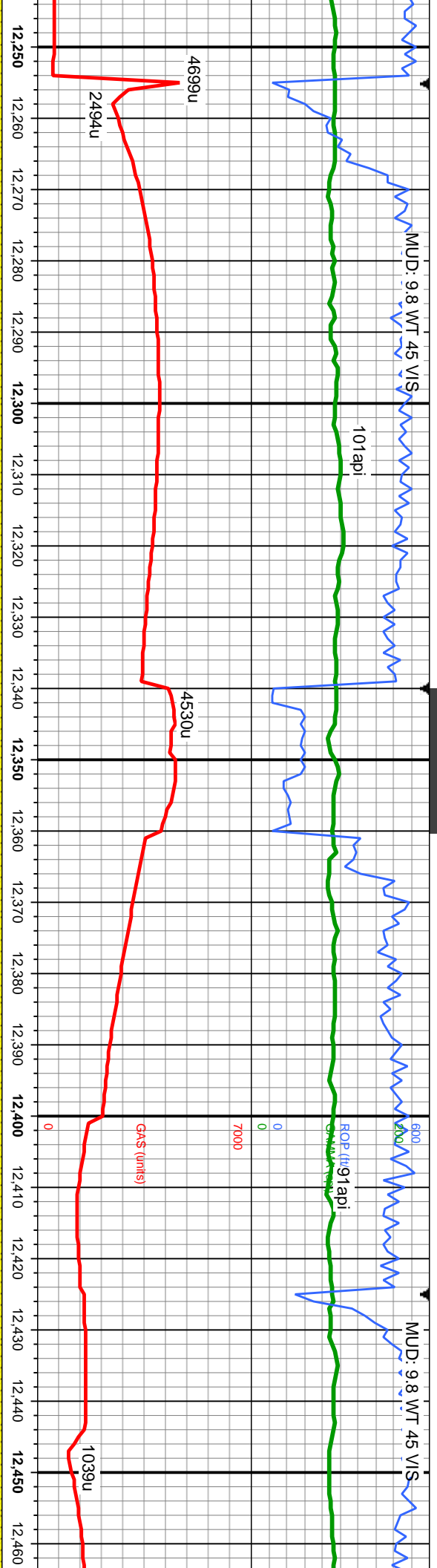
MD: 11,847 '
TVD: 7,231.17 '
Inclination: 91.47 °
Azimuth: 270.46 °
VS: 3,257.62 '

MD: 11,932 '
TVD: 7,229.26 '
Inclination: 91.1 °
Azimuth: 270.65 °
VS: 3,342.55 '

MD: 12,018 '
TVD: 7,228.77 '
Inclination: 89.9 °
Azimuth: 269.4 °
VS: 3,428.51 '

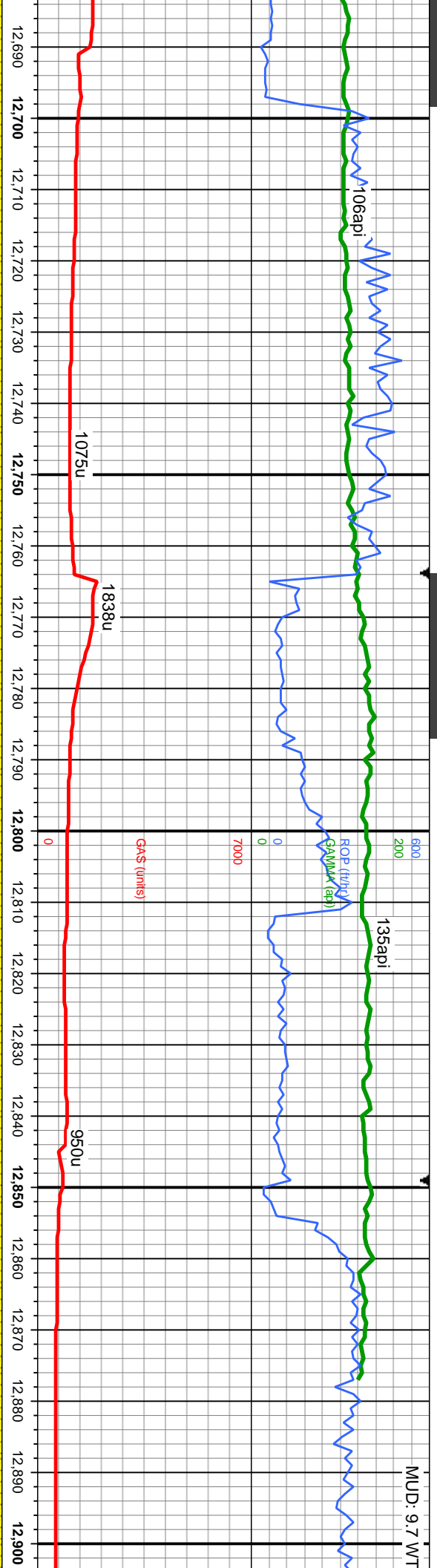






occ clr trnsl, med hd frm, sb md, f	SS: dk-med gy-gy brn, tr s&p, occ clr trnsl, med hd frm, sb md, f	6900	SS: dk-med gy-gy brn, tr s&p, occ clr trnsl, med hd frm, sb md, f
alc, sting mky bl cut, bl ring	gr, w srt, cl sup, mod fri, sl calc, sting mky bl cut, bl ring		gr, w srt, cl sup, mod fri, sl calc, tr pyr, sting n
TVD (ft)			
MD: 12,273 ' TVD: 7,234.46 ' Inclination: 88.35 ° Azimuth: 267.52 ° VS: 3,683.44 '			
MD: 12,358 ' TVD: 7,236.07 ' Inclination: 89.47 ° Azimuth: 268.07 ° VS: 3,768.41 '			
7500			
MD: 12,443 ' TVD: 7,237.74 ' Inclination: 89.44 ° Azimuth: 267.88 ° VS: 3,853.4 '			





MD: 12,699 '
TVD: 7,241.64 '
Inclination: 89.16 °
Azimuth: 267.94 °
VS: 4,109.36 '

SS: dk-med gy-gy brn, tr s&p, occ clr tmsl, med hd frm, sb md, f
gr, w srt, cl sup, mod fri, sl calc, stmg mky bl cut, bl ring

6900

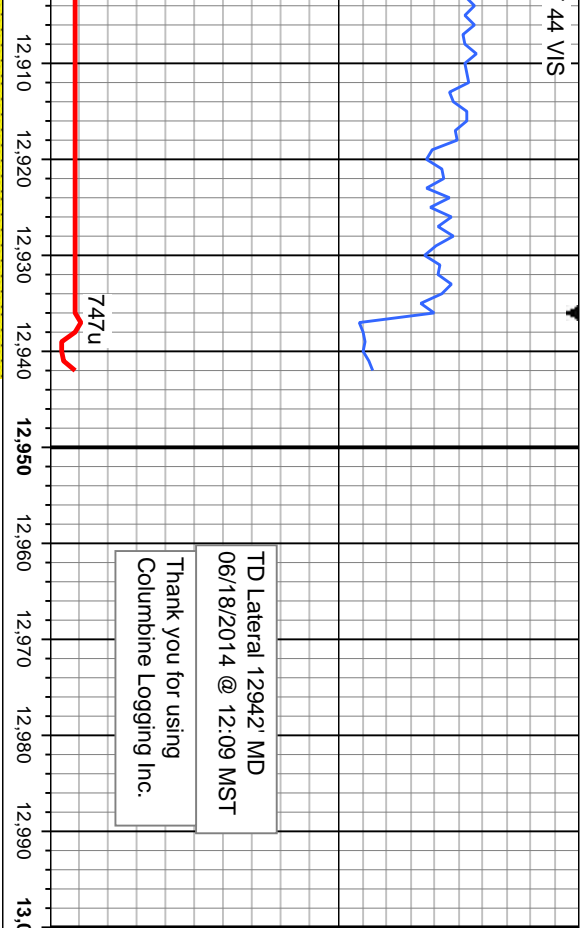
SS: dk-med gy-gy brn, tr s&p, occ clr tmsl, med hd frm, sb r
gr, w srt, cl sup, mod fri, sl calc, stmg mky bl cut, bl ring

MD: 12,873 '
TVD: 7,246.15 '
Inclination: 87.87 °
Azimuth: 267.58 °
VS: 4,283.28 '

7500



44 V/S



TD Lateral 12942' MD
06/18/2014 @ 12:09 MST
Thank you for using
Columbine Logging Inc.

PROJECTION TO BIT

MD: 12,942 '
TVD: 7,248.71 '
Inclination: 87.87 °
Azimuth: 267.5 °
VS: 4,352.22 '

