

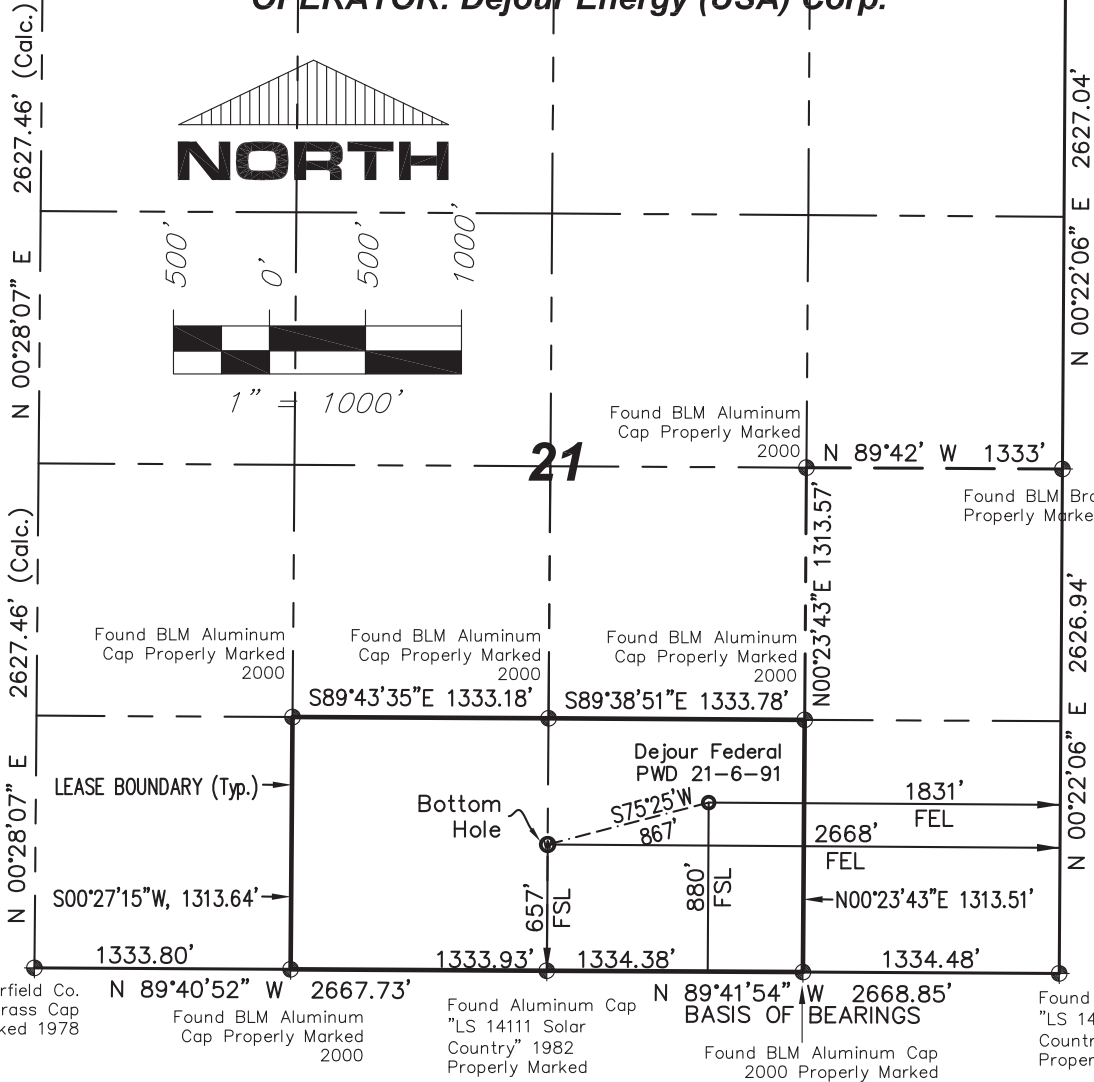
T. 6 S., R. 91 W., 6th P.M.

Found Aluminum Cap
"LS 27925" 2008
Properly Marked

N 89°47'53" W 2662.44' (Calc.)

N 89°33'42" W 2664.96' (Calc.)

OPERATOR: Dejour Energy (USA) Corp.



NOTES:

- 1: GEODETIC POSITIONS ARE SHOWN IN DECIMAL DEGREES BASED ON NAD83.
- 2: UNITS OF MEASUREMENT: U.S. SURVEY FOOT
- 3: EXISTING GROUND ELEVATION: 7009.5'. PROPOSED PAD ELEVATION: 7008.0'. ELEVATIONS HAVE BEEN DERIVED USING GPS OBSERVATIONS, GEOID 09, NAVD 88.
- 4: ALL TOP AND BOTTOM OF HOLE LOCATIONS ARE MEASURED AT 90° ANGLES FROM SECTION LINES.
- 5: BASIS OF BEARINGS: N 89°41'54" W BETWEEN FOUND MONUMENT AS SHOWN HEREON.
- 6: SEE SHEET 1E FOR EXISTING IMPROVEMENTS LOCATED IN THE VICINITY OF PROPOSED WELL.
- 7: SURFACE USE: RANGELAND
- 8: USGS QUAD MAP: NEW CASTLE
- 9: GPS OPERATOR: KYLE TESKY OBSERVED AN AVERAGE PDOP OF ≤ 3.0 FOR ALL SURVEY MEASUREMENTS DEPICTED ON THIS AN SUBSEQUENT SHEETS. ALL GPS OBSERVATIONS ARE IN COMPLIANCE WITH COGCC RULE NO. 215

LEGEND:

- ⊕ - FOUND MONUMENT AS DESCRIBED HEREON
- - SURFACE HOLE LOCATION (SHL)
- ⊙ - BOTTOM HOLE LOCATION (BHL)

FEDERAL PWD 21-6-91 NAD83	
SURFACE HOLE LOCATION	SECTION LINE TIES
LATITUDE = 39.508782°N	FEL = 1831'
LONGITUDE = 107.556242°W	FSL = 880'
BOTTOM HOLE LOCATION	
LATITUDE = 39.508131°N	FEL = 2668'
LONGITUDE = 107.559195°W	FSL = 657'

SURVEYORS STATEMENT:

I, ROBERT E. BRANDEBERRY, BEING A REGISTERED LAND SURVEYOR IN THE STATE OF COLORADO, DO HEREBY CERTIFY THAT THIS PLAT REPRESENTS A SURVEY PERFORMED BY ME OR UNDER MY DIRECT SUPERVISION BETWEEN APRIL 2010 & JANUARY, 2011, AND IS TRUE TO THE BEST OF MY KNOWLEDGE AND BELIEF.

Robert E. Brandeberry 8/21/14

ROBERT E. BRANDEBERRY
COLORADO LS 38388

Revised 08/18/14: Revised Surface Hole Location From Operator



SGM INC.
118 W. 6th Street, Suite 200
Glenwood Springs, Co. 81601
(970)945-1004 www.SGM-Inc.com
320 Third St. Meeker, Co. 81641

1" = 1000'

Sheet 1F of 9

PWD 21-6-91

Well Location Plat - Federal PWD 21-6-91
SW¼SE¼, Section 21, T.6S., R.91W., 6TH P.M.

Job# 2010-112.001

Date: 08/18/14

By: REB

File: APD-SWSE_Sec21