

WOLF UPRR 42-31 # 2

Existing Features	
KB	13

Surface csg shoe at	314
---------------------	-----

Bottom of Foxhills (FHM)	860
--------------------------	-----

Top of Prod Csg leaks	2520
-----------------------	------

Bottom of Prod Csg leaks	3055
--------------------------	------

Sussex	Top	4311
--------	-----	------

Sussex	Base	4438
--------	------	------

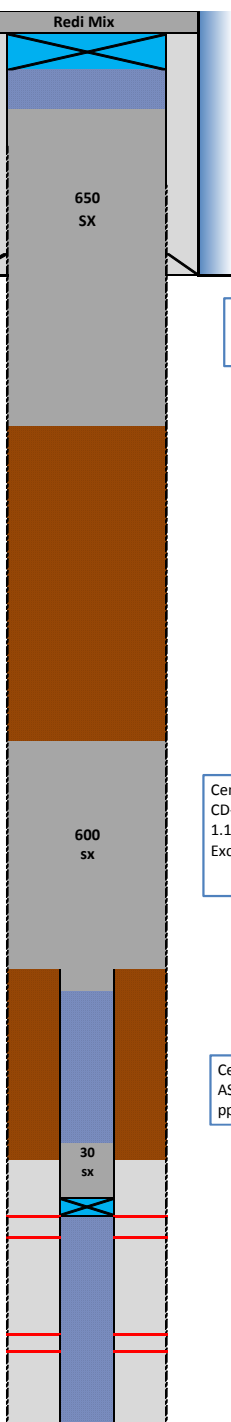
Shannon	Bottom	4855
Shannon is production w/in 1 mile radius		

TOC Cement existing (CBL)	6560
---------------------------	------

Geologic Top		6965
Nio	Perf Top	6990
	Perf Bottom	7070

Geologic Top		
Cod	Perf Top	7289
	Perf Bottom	7300

PBMD	7392
3-1/2" 7.7# CSG	7433



Proposed Additions for P&A

80	CIBP (8-5/8")
----	---------------

100	TOC
-----	-----

Cement Blend: Type III w/ cello flake and CaCl₂, mixed at 14.8 ppg and 1.33 cuft/sk. with 40%

1160	Bottom of cement
------	------------------

4100	Top of cement
------	---------------

Cement Blend: "G" w/ 0.25 pps cello flake, 0.4% CD-32, 0.4% ASA - 301, mixed at 15.8 ppg and 1.15 cuft/sk, Assuming Hole Size of 11" and 20% Excess

4955	Casing Stub
5055	Bottom of cement

Cement Blend: "G" w/ 20% silica flour, 0.4% CD -32, 0.4% ASA -301 and R-3 to achieve 2:30 pump time mixed at 15.8 ppg and 1.38 cuft/sk

6400	TOC
------	-----

6900	BOC
6910	CIBP + 2 sk (Set on 8/13/14)

API# 0512314800				
Well: WOLF UPRR 42-31 # 2 (76281)				
Equipment	Specs.	Depth	Capacity (bbl/ft)	Capacity ft ³ /ft
Surface Casina	8 5/8" 24#	314	0.0637	0.3576
Production Casina	4.50 (11.6#)	7430	0.0155	0.0837
Tubing Size				
Bit Size	7 7/8		0.0602	0.3382
Hole Size	9.5		0.0877	0.4922
Hole Size	11		0.1175	0.6600
Hole Size	12.5		0.1518	0.8522

Cement Calculations				
Section	Volume cu-ft	Cement Sacks	Excess	Top Plug
S/C hole	76.53	57.54		11" Caliper to 4100'
Open Hole	781.65	587.71	40%	
P/C annulus				
Total Top Plug	858.17	645.24	650	
864.5 cu-ft				

In Hole	677.11	588.79	20%	SX/ SH Plug
In pipe	8.37	7.28		11" Hole
Total	685.48	596.07	600	Caliper
690 cu-ft				

				NB/CD Plug
NB csg top	41.85	30.33		
Total	41.85	30.33	30	
41.4				

Cement Yield	1.33	1.15	1.71	1.38
Top Plug	SX/SH	NB/Cd Squeeze	NB/Cd in pipe	

Legend	
	Existing cement with CBL
	assumed cement w/ no CBL
	cast iron cement retainer
	cast iron bridge plug
	mud
	2% KCL Water