



**Chevron  
U.S.A., Inc.**

WELL NO.: GRAY B-10  
(2805)  
FIELD . . . : RANGELY, CO.

## SURVEY DATA

## REMARKS

SURVEY TYPE	T-S-T	SURFACE TEMP	106.5 F
DATE	6/23/2014	BHT	118.1 F
METERED RATE	600 B/D	TBG PRESSURE	1000 PSI
MEASURED RATE	600 B/D	CSG PRESSURE	0 PSI
DESIRED RATE	N/A	PICK-UP	6537'
SERVICE CO.	PLS	INJ. FLUID	H2O

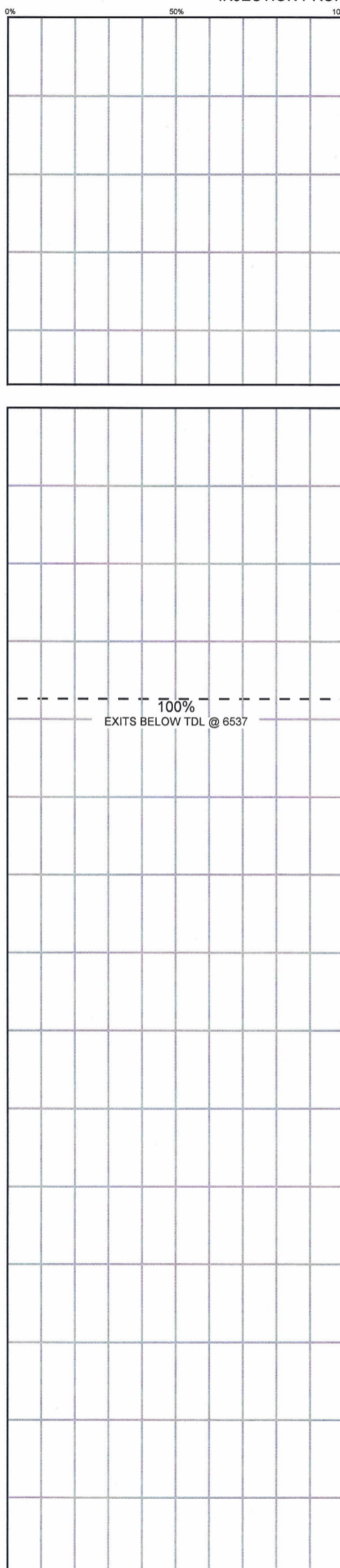
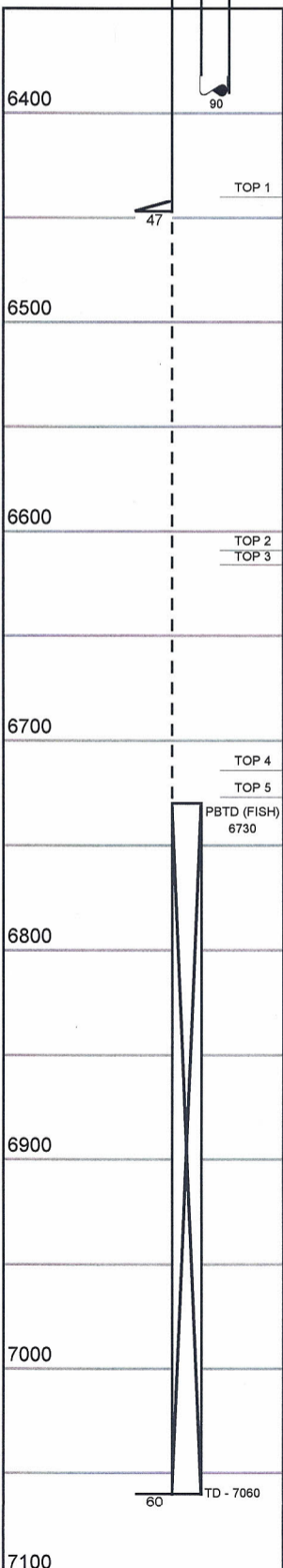
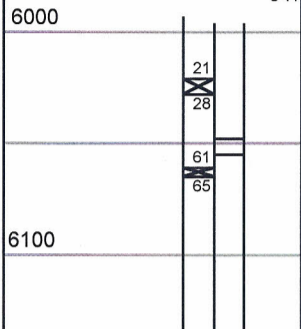
R/A TRACER INDICATES TOP PERF AND PACKERS OK.

RECORDED BY: R. ANDREWS

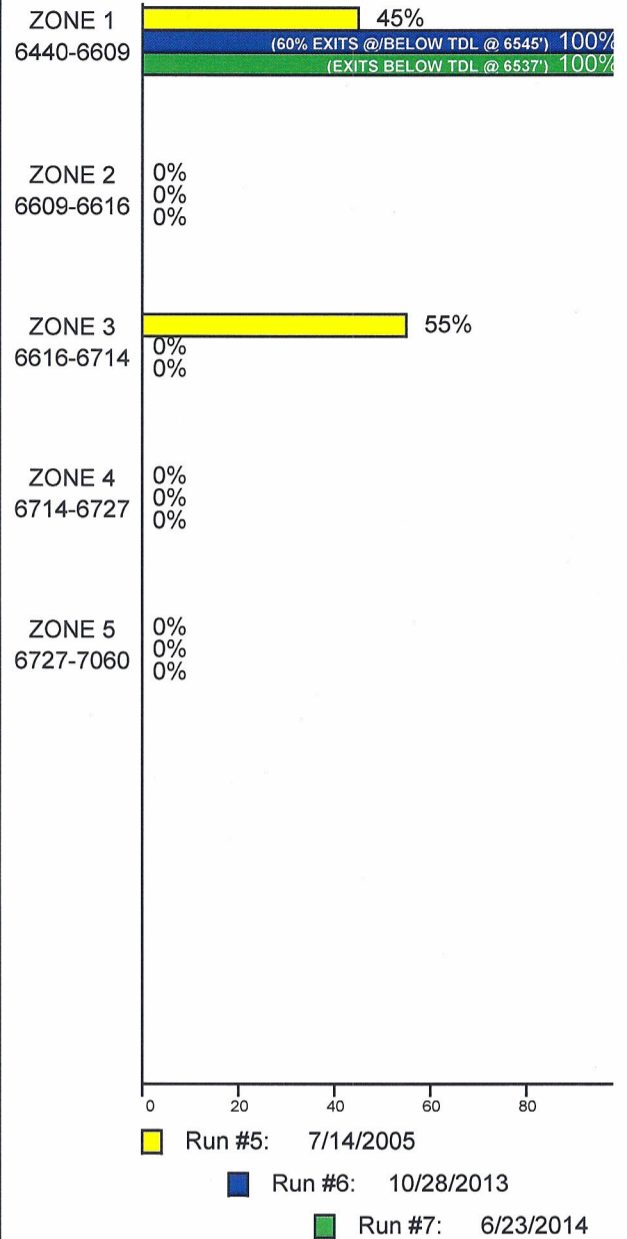
## INJECTION PROFILE

## MECHANICAL INFORMATION

7" 23# CASING	0-6447'
OPEN HOLE	6447'-7060'
P.B.T.D. (FISH TOP)	6730'
2-7/8" F.L. TUBING	0-6021'
TOP PACKER	6021'-6028'
2-7/8" TUBING SUBS	6028'-6048'
ON/OFF TOOL 1.875" "F"	6048'-6055'
2-7/8" TUBING SUB	6055'-6061'
PACKER	6061'-6065'
2-3/8" F.G. TUBING	6065'-6390'
	C-14



PERCENTAGE INJECTED INTO  
ZONE



TEMPERATURES (F°)

DATE	RUN #5 7/14/2005	RUN #6 10/28/2013	RUN #7 6/23/2014
SURFACE	111.3	104.8	106.5
6440-6609	---	---	---
TDL (6537)	116.4	114.3	118.1
6609-6616	---	---	---
6616-6714	---	---	---
6714-6727	---	---	---
6727-7060	---	---	---
RATE (B/D)	938	1195	600
PRESS (PSI)	1220	1180	1000