

# BONANZA CREEK OIL COMPANY

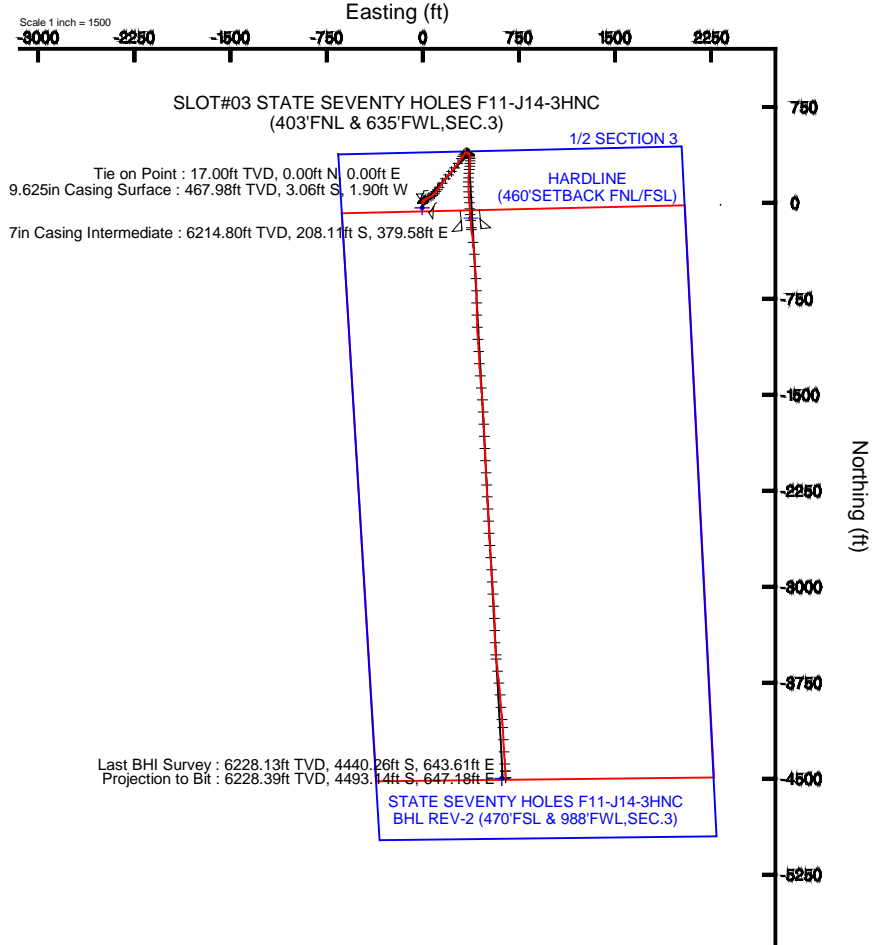
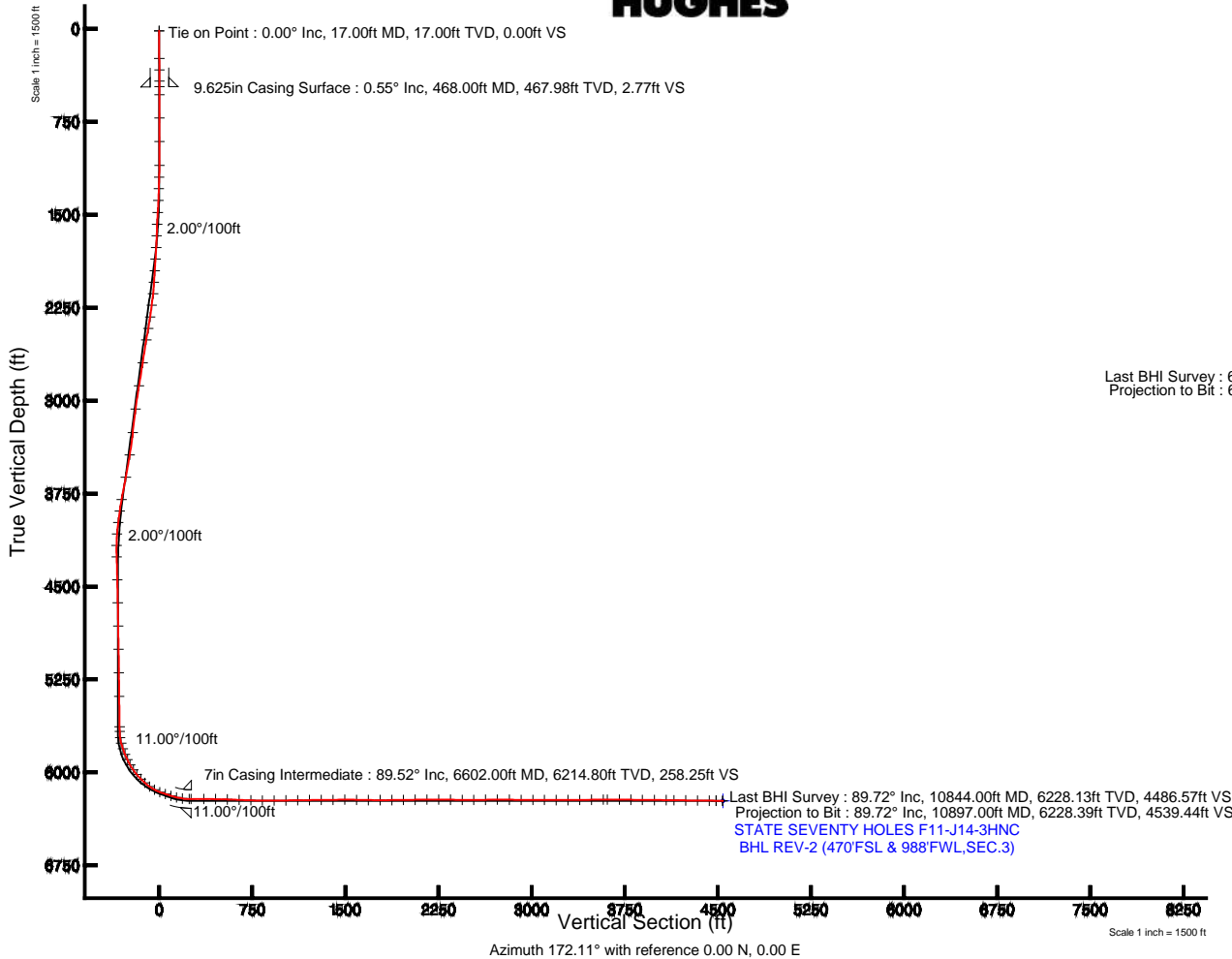
Location: COLORADO Slot: SLOT#03 STATE SEVENTY HOLES F11-J14-3HNC (403'FNL & 635'FWL,SEC.3)  
Field: WELD COUNTY Well: STATE SEVENTY HOLES F11-J14-3HNC  
Facility: SEC.03-T4N-R62W Wellbore: STATE SEVENTY HOLES F11-J14-3HNC PWB

Plot reference wellpath is STATE SEVENTY HOLES F11-J14-3HNC (REV-B.0) PWP

True vertical depths are referenced to RIG (RKB)	Grid System: NAD83 / Lambert Colorado SP, Northern Zone (501), US feet
Measured depths are referenced to RIG (RKB)	North Reference: True north
RIG (RKB) to Mean Sea Level: 4551 feet	Scale: True distance
Mean Sea Level to Mud line (At Slot: SLOT#03 STATE SEVENTY HOLES F11-J14-3HNC (403'FNL & 635'FWL,SEC.3)) 0 feet	Depths are in feet
Coordinates are in feet referenced to Slot	Created by: generator on 5/2/2014

## Location Information

Facility Name		Grid East (US R)	Grid North (US R)	Latitude	Longitude	
SEC.03-T4N-R62W		332855.541	1371680.588	40°20'51.038"N	104°19'11.100"W	
Site	Local N (R)	Local E (R)	Grid East (US R)	Grid North (US R)	Latitude	Longitude
SLOT#03 STATE SEVENTY HOLES F11-J14-3HNC (403'FNL & 635'FWL,SEC.3)	36.25	5.57	332891.006	1371718.910	40°20'51.038"N	104°19'11.038"W
RIG (RKB) to Mud line (At Slot: SLOT#03 STATE SEVENTY HOLES F11-J14-3HNC (403'FNL & 635'FWL,SEC.3))					4551 ft	
Mean Sea Level to Mud line (At Slot: SLOT#03 STATE SEVENTY HOLES F11-J14-3HNC (403'FNL & 635'FWL,SEC.3))					0 ft	
RIG (RKB) to Mean Sea Level					4551 ft	



BGGM (1945.0 to 2015.0) Dip: 66.97° Field: 52779.2 nT  
Magnetic North is 8.29 degrees East of True North (at 3/18/2014)

To correct azimuth from Magnetic to True add 8.29 degrees



# Actual Wellpath Report

STATE SEVENTY HOLES F11-J14-3HNC AWP

Page 1 of 7



## REFERENCE WELLPATH IDENTIFICATION

Operator	BONANZA CREEK OIL COMPANY	Slot	SLOT#03 STATE SEVENTY HOLES F11-J14-3HNC (403'FNL & 635'FWL,SEC.3)
Area	COLORADO	Well	STATE SEVENTY HOLES F11-J14-3HNC
Field	WELD COUNTY	Wellbore	STATE SEVENTY HOLES F11-J14-3HNC AWB
Facility	SEC.03-T4N-R62W		

## REPORT SETUP INFORMATION

Projection System	NAD83 / Lambert Colorado SP, Northern Zone (501), US feet	Software System	WellArchitect® 4.0.0
North Reference	True	User	Guenaler
Scale	0.999958	Report Generated	5/2/2014 at 1:39:31 PM
Convergence at slot	n/a	Database/Source file	WA_Denver/STATE_SEVENTY_HOLES_F11-J14-3HNC_AWB.xml

## WELLPATH LOCATION

	Local coordinates		Grid coordinates		Geographic coordinates	
	North[ft]	East[ft]	Easting[US ft]	Northing[US ft]	Latitude	Longitude
Slot Location	38.25	5.57	3328961.01	1371718.91	40°20'51.936"N	104°19'11.028"W
Facility Reference Pt			3328955.94	1371680.59	40°20'51.558"N	104°19'11.100"W
Field Reference Pt			3327718.19	1377782.99	40°21'52.020"N	104°19'26.040"W

## WELLPATH DATUM

Calculation method	Minimum curvature	RIG (RKB) to Facility Vertical Datum	4551.00ft
Horizontal Reference Pt	Slot	RIG (RKB) to Mean Sea Level	4551.00ft
Vertical Reference Pt	RIG (RKB)	RIG (RKB) to Mud Line at Slot (SLOT#03 STATE SEVENTY HOLES F11-J14-3HNC (403'FNL & 635'FWL,SEC.3))	4551.00ft
MD Reference Pt	RIG (RKB)	Section Origin	N 0.00, E 0.00 ft
Field Vertical Reference	Mean Sea Level	Section Azimuth	172.11°



# Actual Wellpath Report

## STATE SEVENTY HOLES F11-J14-3HNC AWP

Page 2 of 7



REFERENCE WELLPATH IDENTIFICATION			
Operator	BONANZA CREEK OIL COMPANY	Slot	SLOT#03 STATE SEVENTY HOLES F11-J14-3HNC (403'FNL & 635'FWL,SEC.3)
Area	COLORADO	Well	STATE SEVENTY HOLES F11-J14-3HNC
Field	WELD COUNTY	Wellbore	STATE SEVENTY HOLES F11-J14-3HNC AWB
Facility	SEC.03-T4N-R62W		

WELLPATH DATA (109 stations) † = interpolated/extrapolated station										
MD [ft]	Inclination [°]	Azimuth [°]	TVD [ft]	Vert Sect [ft]	North [ft]	East [ft]	Latitude	Longitude	DLS [°/100ft]	Comments
0.00†	0.000	212.080	0.00	0.00	0.00	0.00	40°20'51.936"N	104°19'11.028"W	0.00	
17.00	0.000	212.080	17.00	0.00	0.00	0.00	40°20'51.936"N	104°19'11.028"W	0.00	Tie on Point
239.00	0.890	212.080	238.99	1.32	-1.46	-0.92	40°20'51.922"N	104°19'11.040"W	0.40	
333.00	0.400	191.570	332.98	2.19	-2.40	-1.37	40°20'51.912"N	104°19'11.046"W	0.57	
422.00	0.310	227.770	421.98	2.62	-2.87	-1.61	40°20'51.908"N	104°19'11.049"W	0.27	
531.00	0.900	246.560	530.98	3.01	-3.41	-2.61	40°20'51.902"N	104°19'11.062"W	0.56	
720.00	0.310	64.160	719.97	3.26	-3.77	-3.52	40°20'51.899"N	104°19'11.073"W	0.64	
910.00	0.200	65.900	909.97	3.00	-3.41	-2.75	40°20'51.902"N	104°19'11.064"W	0.06	
1101.00	0.370	332.270	1100.97	2.33	-2.73	-2.73	40°20'51.909"N	104°19'11.063"W	0.23	
1196.00	1.790	6.920	1195.95	0.61	-0.99	-2.70	40°20'51.926"N	104°19'11.063"W	1.58	
1291.00	1.810	11.800	1290.90	-2.24	1.95	-2.21	40°20'51.955"N	104°19'11.057"W	0.16	
1386.00	3.720	35.970	1385.79	-5.87	5.92	-0.09	40°20'51.994"N	104°19'11.029"W	2.31	
1482.00	4.630	25.920	1481.54	-11.34	11.92	3.43	40°20'52.054"N	104°19'10.984"W	1.21	
1577.00	3.450	48.550	1576.30	-16.11	17.26	7.25	40°20'52.107"N	104°19'10.934"W	2.06	
1672.00	4.900	53.340	1671.05	-19.64	21.58	12.65	40°20'52.149"N	104°19'10.865"W	1.57	
1766.00	7.620	63.200	1764.48	-23.59	26.79	21.43	40°20'52.201"N	104°19'10.751"W	3.10	
1861.00	9.000	57.260	1858.48	-28.76	33.65	33.30	40°20'52.268"N	104°19'10.598"W	1.71	
1956.00	10.910	58.680	1952.05	-35.45	42.34	47.24	40°20'52.354"N	104°19'10.418"W	2.03	
2050.00	11.590	66.740	2044.25	-41.49	50.69	63.51	40°20'52.437"N	104°19'10.208"W	1.82	
2145.00	10.160	51.410	2137.56	-48.30	59.69	78.83	40°20'52.526"N	104°19'10.010"W	3.38	
2240.00	11.110	36.970	2230.94	-59.07	72.23	90.89	40°20'52.650"N	104°19'09.854"W	2.97	
2336.00	11.840	33.940	2325.03	-72.97	87.79	101.95	40°20'52.804"N	104°19'09.711"W	0.99	
2430.00	13.760	37.560	2416.69	-88.00	104.66	114.15	40°20'52.970"N	104°19'09.554"W	2.21	
2526.00	12.430	34.910	2510.19	-103.59	122.18	127.02	40°20'53.143"N	104°19'09.387"W	1.52	
2715.00	12.270	39.090	2694.82	-132.21	154.45	151.33	40°20'53.462"N	104°19'09.074"W	0.48	
2906.00	13.270	36.980	2881.09	-161.60	187.71	177.31	40°20'53.791"N	104°19'08.738"W	0.58	
3096.00	10.760	37.850	3066.92	-189.43	219.14	201.32	40°20'54.102"N	104°19'08.428"W	1.32	
3289.00	9.960	45.060	3256.78	-212.07	245.16	224.19	40°20'54.359"N	104°19'08.133"W	0.79	
3474.00	12.930	36.600	3438.09	-236.48	273.09	247.86	40°20'54.635"N	104°19'07.827"W	1.84	
3659.00	14.720	35.090	3617.72	-268.44	308.94	273.71	40°20'54.989"N	104°19'07.493"W	0.99	



# Actual Wellpath Report

## STATE SEVENTY HOLES F11-J14-3HNC AWP

Page 3 of 7



### REFERENCE WELLPATH IDENTIFICATION

Operator	BONANZA CREEK OIL COMPANY	Slot	SLOT#03 STATE SEVENTY HOLES F11-J14-3HNC (403'FNL & 635'FWL,SEC.3)
Area	COLORADO	Well	STATE SEVENTY HOLES F11-J14-3HNC
Field	WELD COUNTY	Wellbore	STATE SEVENTY HOLES F11-J14-3HNC AWB
Facility	SEC.03-T4N-R62W		

### WELLPATH DATA (109 stations)

MD [ft]	Inclination [°]	Azimuth [°]	TVD [ft]	Vert Sect [ft]	North [ft]	East [ft]	Latitude	Longitude	DLS [°/100ft]	Comments
3846.00	13.710	33.760	3799.00	-302.38	346.80	299.69	40°20'55.363"N	104°19'07.157"W	0.57	
3940.00	10.670	32.160	3890.87	-317.37	363.43	310.51	40°20'55.527"N	104°19'07.018"W	3.25	
4034.00	9.880	37.090	3983.36	-329.74	377.24	320.01	40°20'55.664"N	104°19'06.895"W	1.26	
4127.00	8.280	51.300	4075.20	-338.81	387.79	330.05	40°20'55.768"N	104°19'06.765"W	2.95	
4220.00	5.350	71.590	4167.55	-343.04	393.35	339.39	40°20'55.823"N	104°19'06.645"W	4.03	
4313.00	2.290	133.740	4260.36	-342.37	393.43	344.85	40°20'55.824"N	104°19'06.574"W	5.09	
4499.00	1.930	129.370	4446.24	-337.16	388.88	349.95	40°20'55.779"N	104°19'06.508"W	0.21	
4685.00	1.390	128.480	4632.16	-333.22	385.48	354.14	40°20'55.745"N	104°19'06.454"W	0.29	
4871.00	1.530	129.510	4818.10	-329.76	382.50	357.82	40°20'55.716"N	104°19'06.406"W	0.08	
5059.00	1.130	139.150	5006.05	-326.36	379.50	360.97	40°20'55.686"N	104°19'06.366"W	0.24	
5249.00	0.860	132.140	5196.02	-323.69	377.13	363.26	40°20'55.663"N	104°19'06.336"W	0.16	
5439.00	0.750	155.070	5386.00	-321.41	375.04	364.84	40°20'55.642"N	104°19'06.316"W	0.18	
5685.00	0.880	205.250	5631.98	-318.29	371.88	364.71	40°20'55.611"N	104°19'06.318"W	0.29	
5723.00	1.160	211.730	5669.97	-317.75	371.28	364.38	40°20'55.605"N	104°19'06.322"W	0.80	
5771.00	7.020	165.290	5717.83	-314.46	368.03	364.87	40°20'55.573"N	104°19'06.315"W	13.08	
5818.00	14.600	172.980	5763.97	-305.67	359.36	366.33	40°20'55.487"N	104°19'06.297"W	16.38	
5866.00	19.380	176.170	5809.86	-291.67	345.40	367.60	40°20'55.349"N	104°19'06.280"W	10.14	
5913.00	23.000	179.470	5853.68	-274.78	328.43	368.21	40°20'55.181"N	104°19'06.272"W	8.11	
5961.00	25.330	182.910	5897.47	-255.39	308.80	367.77	40°20'54.987"N	104°19'06.278"W	5.67	
6009.00	30.530	185.850	5939.87	-233.45	286.40	366.01	40°20'54.766"N	104°19'06.301"W	11.20	
6057.00	37.000	188.070	5979.75	-207.69	259.94	362.73	40°20'54.505"N	104°19'06.343"W	13.72	
6104.00	40.960	186.940	6016.28	-179.19	230.63	358.88	40°20'54.215"N	104°19'06.393"W	8.56	
6154.00	43.830	181.600	6053.21	-146.25	197.04	356.42	40°20'53.883"N	104°19'06.425"W	9.20	
6199.00	48.500	181.610	6084.37	-114.24	164.60	355.51	40°20'53.563"N	104°19'06.436"W	10.38	
6247.00	55.450	178.670	6113.93	-76.83	126.82	355.46	40°20'53.189"N	104°19'06.437"W	15.26	
6294.00	61.270	176.810	6138.57	-37.02	86.86	357.06	40°20'52.794"N	104°19'06.416"W	12.83	
6342.00	69.220	175.870	6158.66	6.41	43.40	359.85	40°20'52.365"N	104°19'06.380"W	16.66	
6388.00	72.210	174.850	6173.85	49.76	0.12	363.37	40°20'51.937"N	104°19'06.335"W	6.83	
6436.00	72.310	176.810	6188.47	95.37	-45.47	366.69	40°20'51.487"N	104°19'06.292"W	3.89	
6483.00	76.780	176.080	6201.00	140.53	-90.67	369.50	40°20'51.040"N	104°19'06.256"W	9.63	



# Actual Wellpath Report

## STATE SEVENTY HOLES F11-J14-3HNC AWP

Page 4 of 7



### REFERENCE WELLPATH IDENTIFICATION

Operator	BONANZA CREEK OIL COMPANY	Slot	SLOT#03 STATE SEVENTY HOLES F11-J14-3HNC (403'FNL & 635'FWL,SEC.3)
Area	COLORADO	Well	STATE SEVENTY HOLES F11-J14-3HNC
Field	WELD COUNTY	Wellbore	STATE SEVENTY HOLES F11-J14-3HNC AWB
Facility	SEC.03-T4N-R62W		

### WELLPATH DATA (109 stations)

MD [ft]	Inclination [°]	Azimuth [°]	TVD [ft]	Vert Sect [ft]	North [ft]	East [ft]	Latitude	Longitude	DLS [°/100ft]	Comments
6531.00	81.290	175.150	6210.12	187.56	-137.64	373.11	40°20'50.576"N	104°19'06.209"W	9.59	
6587.00	89.410	174.540	6214.66	243.26	-193.19	378.12	40°20'50.027"N	104°19'06.144"W	14.54	
6703.00	90.280	172.790	6214.97	359.21	-308.47	390.92	40°20'48.888"N	104°19'05.979"W	1.68	
6798.00	89.010	174.720	6215.56	454.17	-402.90	401.25	40°20'47.955"N	104°19'05.846"W	2.43	
6893.00	88.210	177.140	6217.87	548.92	-497.62	407.99	40°20'47.019"N	104°19'05.759"W	2.68	
6988.00	87.670	176.070	6221.28	643.56	-592.40	413.62	40°20'46.082"N	104°19'05.686"W	1.26	
7083.00	88.230	178.470	6224.68	738.11	-687.22	418.14	40°20'45.145"N	104°19'05.628"W	2.59	
7178.00	89.940	179.100	6226.20	832.45	-782.18	420.15	40°20'44.207"N	104°19'05.602"W	1.92	
7273.00	90.000	179.070	6226.25	926.75	-877.17	421.67	40°20'43.268"N	104°19'05.582"W	0.07	
7368.00	90.710	177.060	6225.66	1021.23	-972.11	424.88	40°20'42.330"N	104°19'05.541"W	2.24	
7463.00	90.680	176.530	6224.51	1115.90	-1066.95	430.19	40°20'41.393"N	104°19'05.472"W	0.56	
7558.00	91.150	176.880	6222.99	1210.59	-1161.78	435.65	40°20'40.456"N	104°19'05.402"W	0.62	
7653.00	90.340	176.540	6221.75	1305.27	-1256.62	441.10	40°20'39.518"N	104°19'05.331"W	0.92	
7748.00	90.650	175.270	6220.93	1400.06	-1351.37	447.88	40°20'38.582"N	104°19'05.244"W	1.38	
7843.00	90.500	174.420	6219.98	1494.94	-1445.98	456.42	40°20'37.647"N	104°19'05.134"W	0.91	
7938.00	88.370	175.420	6220.92	1589.82	-1540.59	464.83	40°20'36.712"N	104°19'05.025"W	2.48	
8033.00	89.480	177.160	6222.70	1684.54	-1635.37	470.97	40°20'35.776"N	104°19'04.946"W	2.17	
8128.00	89.880	177.190	6223.23	1779.17	-1730.26	475.66	40°20'34.838"N	104°19'04.885"W	0.42	
8223.00	90.770	177.460	6222.69	1873.77	-1825.15	480.09	40°20'33.900"N	104°19'04.828"W	0.98	
8318.00	90.520	177.390	6221.62	1968.36	-1920.05	484.36	40°20'32.963"N	104°19'04.773"W	0.27	
8413.00	91.020	177.460	6220.34	2062.94	-2014.94	488.62	40°20'32.025"N	104°19'04.718"W	0.53	
8507.00	90.560	177.260	6219.05	2156.54	-2108.83	492.95	40°20'31.097"N	104°19'04.662"W	0.53	
8602.00	89.410	177.100	6219.07	2251.17	-2203.72	497.63	40°20'30.159"N	104°19'04.602"W	1.22	
8697.00	89.260	177.150	6220.18	2345.80	-2298.59	502.39	40°20'29.222"N	104°19'04.540"W	0.17	
8792.00	89.200	176.730	6221.45	2440.45	-2393.45	507.46	40°20'28.285"N	104°19'04.475"W	0.45	
8887.00	90.310	177.130	6221.86	2535.11	-2488.31	512.55	40°20'27.347"N	104°19'04.409"W	1.24	
8982.00	91.140	176.980	6220.66	2629.75	-2583.18	517.43	40°20'26.410"N	104°19'04.346"W	0.89	
9077.00	89.820	176.670	6219.86	2724.42	-2678.02	522.69	40°20'25.472"N	104°19'04.278"W	1.43	
9173.00	89.720	175.630	6220.25	2820.18	-2773.81	529.14	40°20'24.526"N	104°19'04.195"W	1.09	
9268.00	88.980	176.420	6221.32	2914.95	-2868.57	535.72	40°20'23.590"N	104°19'04.110"W	1.14	



# Actual Wellpath Report

## STATE SEVENTY HOLES F11-J14-3HNC AWP

Page 5 of 7



### REFERENCE WELLPATH IDENTIFICATION

Operator	BONANZA CREEK OIL COMPANY	Slot	SLOT#03 STATE SEVENTY HOLES F11-J14-3HNC (403'FNL & 635'FWL,SEC.3)
Area	COLORADO	Well	STATE SEVENTY HOLES F11-J14-3HNC
Field	WELD COUNTY	Wellbore	STATE SEVENTY HOLES F11-J14-3HNC AWB
Facility	SEC.03-T4N-R62W		

### WELLPATH DATA (109 stations)

MD [ft]	Inclination [°]	Azimuth [°]	TVD [ft]	Vert Sect [ft]	North [ft]	East [ft]	Latitude	Longitude	DLS [°/100ft]	Comments
9363.00	90.000	176.430	6222.17	3009.68	-2963.38	541.65	40°20'22.653"N	104°19'04.033"W	1.07	
9458.00	89.750	176.180	6222.38	3104.42	-3058.18	547.77	40°20'21.716"N	104°19'03.954"W	0.37	
9553.00	89.910	175.700	6222.66	3199.21	-3152.94	554.49	40°20'20.779"N	104°19'03.867"W	0.53	
9648.00	90.000	178.610	6222.73	3293.83	-3247.81	559.21	40°20'19.842"N	104°19'03.807"W	3.06	
9743.00	90.680	179.460	6222.17	3388.14	-3342.80	560.81	40°20'18.903"N	104°19'03.786"W	1.15	
9838.00	91.480	177.560	6220.38	3482.52	-3437.74	563.28	40°20'17.965"N	104°19'03.754"W	2.17	
9934.00	90.590	174.810	6218.64	3578.25	-3533.51	569.66	40°20'17.019"N	104°19'03.672"W	3.01	
9965.00	90.530	173.830	6218.34	3609.23	-3564.35	572.73	40°20'16.714"N	104°19'03.632"W	3.17	
10063.00	89.100	174.040	6218.66	3707.18	-3661.80	583.09	40°20'15.751"N	104°19'03.498"W	1.47	
10155.00	88.790	173.310	6220.35	3799.13	-3753.22	593.22	40°20'14.848"N	104°19'03.367"W	0.86	
10249.00	89.410	175.730	6221.83	3893.02	-3846.78	602.20	40°20'13.923"N	104°19'03.252"W	2.66	
10345.00	89.630	175.640	6222.63	3988.83	-3942.50	609.42	40°20'12.977"N	104°19'03.158"W	0.25	
10440.00	89.660	174.710	6223.22	4083.69	-4037.16	617.41	40°20'12.042"N	104°19'03.055"W	0.98	
10504.00	89.200	175.720	6223.86	4147.60	-4100.93	622.75	40°20'11.412"N	104°19'02.986"W	1.73	
10599.00	88.860	176.950	6225.47	4242.32	-4195.72	628.82	40°20'10.475"N	104°19'02.908"W	1.34	
10694.00	89.510	176.720	6226.82	4336.99	-4290.57	634.06	40°20'09.538"N	104°19'02.840"W	0.73	
10789.00	89.410	176.200	6227.71	4431.71	-4385.38	639.93	40°20'08.601"N	104°19'02.765"W	0.56	
10844.00	89.720	176.130	6228.13	4486.57	-4440.26	643.61	40°20'08.058"N	104°19'02.717"W	0.58	Last BHI Survey
10897.00	89.720	176.130	6228.39	4539.44	-4493.14	647.18	40°20'07.536"N	104°19'02.671"W	0.00	Projection to Bit

### HOLE & CASING SECTIONS -

Ref Wellbore: STATE SEVENTY HOLES F11-J14-3HNC AWB      Ref Wellpath: STATE SEVENTY HOLES F11-J14-3HNC AWP

String/Diameter	Start MD [ft]	End MD [ft]	Interval [ft]	Start TVD [ft]	End TVD [ft]	Start N/S [ft]	Start E/W [ft]	End N/S [ft]	End E/W [ft]
9.625in Casing Surface	17.00	468.00	451.00	17.00	467.98	0.00	0.00	-3.06	-1.90
7in Casing Intermediate	17.00	6602.00	6585.00	17.00	6214.80	0.00	0.00	-208.11	379.58



# Actual Wellpath Report

STATE SEVENTY HOLES F11-J14-3HNC AWP

Page 6 of 7



REFERENCE WELLPATH IDENTIFICATION			
Operator	BONANZA CREEK OIL COMPANY	Slot	SLOT#03 STATE SEVENTY HOLES F11-J14-3HNC (403'FNL & 635'FWL,SEC.3)
Area	COLORADO	Well	STATE SEVENTY HOLES F11-J14-3HNC
Field	WELD COUNTY	Wellbore	STATE SEVENTY HOLES F11-J14-3HNC AWB
Facility	SEC.03-T4N-R62W		

TARGETS									
Name	MD [ft]	TVD [ft]	North [ft]	East [ft]	Grid East [US ft]	Grid North [US ft]	Latitude	Longitude	Shape
STATE SEVENTY HOLES A11-E14-3HNC 1/2 SECTION 3		0.00	-38.25	-5.57	3328955.94	1371680.59	40°20'51.558"N	104°19'11.100"W	polygon
STATE SEVENTY HOLES F11-J14-3HNC BHL REV-2 (470'FSL & 988'FWL,SEC.3)		6229.00	-4498.47	617.23	3329638.03	1367229.25	40°20'07.483"N	104°19'03.058"W	point
STATE SEVENTY HOLES A11-E14-3HNC HARDLINE (460'SETBACK FNL/FSL)		6251.00	-38.25	-5.57	3328955.94	1371680.59	40°20'51.558"N	104°19'11.100"W	polygon
STATE SEVENTY HOLES F11-J14-3HNB BHL REV-1 (470'FSL & 988'FWL,SEC.3)		6251.00	-4498.47	617.23	3329638.03	1367229.25	40°20'07.483"N	104°19'03.058"W	point
STATE SEVENTY HOLES F11-J14-3HNB TARGET		6251.00	-120.22	374.62	3329337.18	1371603.69	40°20'50.748"N	104°19'06.190"W	point

WELLPATH COMPOSITION -				
Ref Wellbore: STATE SEVENTY HOLES F11-J14-3HNC AWB		Ref Wellpath: STATE SEVENTY HOLES F11-J14-3HNC AWP		
Start MD [ft]	End MD [ft]	Positional Uncertainty Model	Log Name/Comment	Wellbore
17.00	6587.00	NaviTrak (Standard)	BHI/Navitrak MWD 8.75" Hole <17'-6587'>	STATE SEVENTY HOLES F11-J14-3HNC AWB
6587.00	10844.00	NaviTrak (Standard)	BHI/Navitrak MWD 6.125" Hole <6703'-9553'>	STATE SEVENTY HOLES F11-J14-3HNC AWB
10844.00	10897.00	Blind Drilling (std)	Projection to bit	STATE SEVENTY HOLES F11-J14-3HNC AWB



# Actual Wellpath Report

STATE SEVENTY HOLES F11-J14-3HNC AWP

Page 7 of 7



REFERENCE WELLPATH IDENTIFICATION			
Operator	BONANZA CREEK OIL COMPANY	Slot	SLOT#03 STATE SEVENTY HOLES F11-J14-3HNC (403'FNL & 635'FWL,SEC.3)
Area	COLORADO	Well	STATE SEVENTY HOLES F11-J14-3HNC
Field	WELD COUNTY	Wellbore	STATE SEVENTY HOLES F11-J14-3HNC AWP
Facility	SEC.03-T4N-R62W		

WELLPATH COMMENTS				
MD [ft]	Inclination [°]	Azimuth [°]	TVD [ft]	Comment
17.00	0.000	212.080	17.00	Tie on Point
10844.00	89.720	176.130	6228.13	Last BHI Survey
10897.00	89.720	176.130	6228.39	Projection to Bit