

GREAT WESTERN OIL & GAS COMPANY  
PRODUCTION FACILITY LAYOUT FOR  
LIND EE 20-399HN, 362HN, 359HC, 322HN, 282HN, 279HC & 242HN  
SECTION 20, T7N, R66W, 6th. P.M.  
SW 1/4 SW 1/4

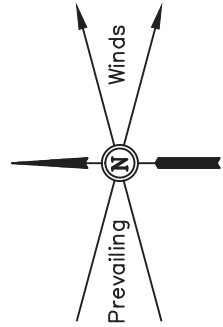
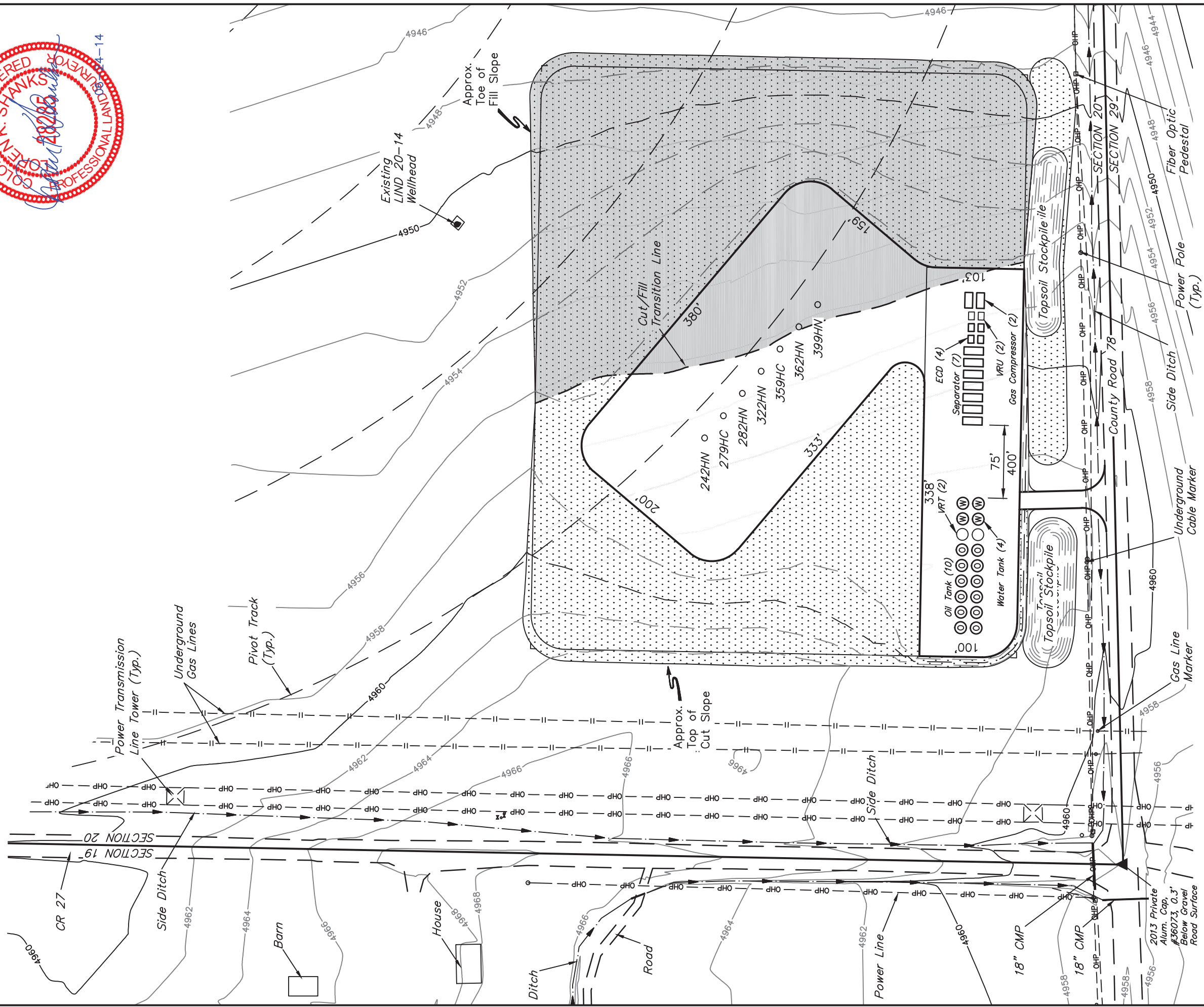


FIGURE #4

SCALE: 1" = 100'  
DATE: 08-02-13  
DRAWN BY: H.K.W.  
REV: 02-07-14 J.W.  
REV: 03-04-14 J.W.  
REV: 06-12-14 J.W.



APPROXIMATE ACREAGE	
UN-RECLAIMED	= ± 2.953 ACRES
RECLAIMED	= ± 4.912 ACRES
TOTAL	= ± 7.865 ACRES

