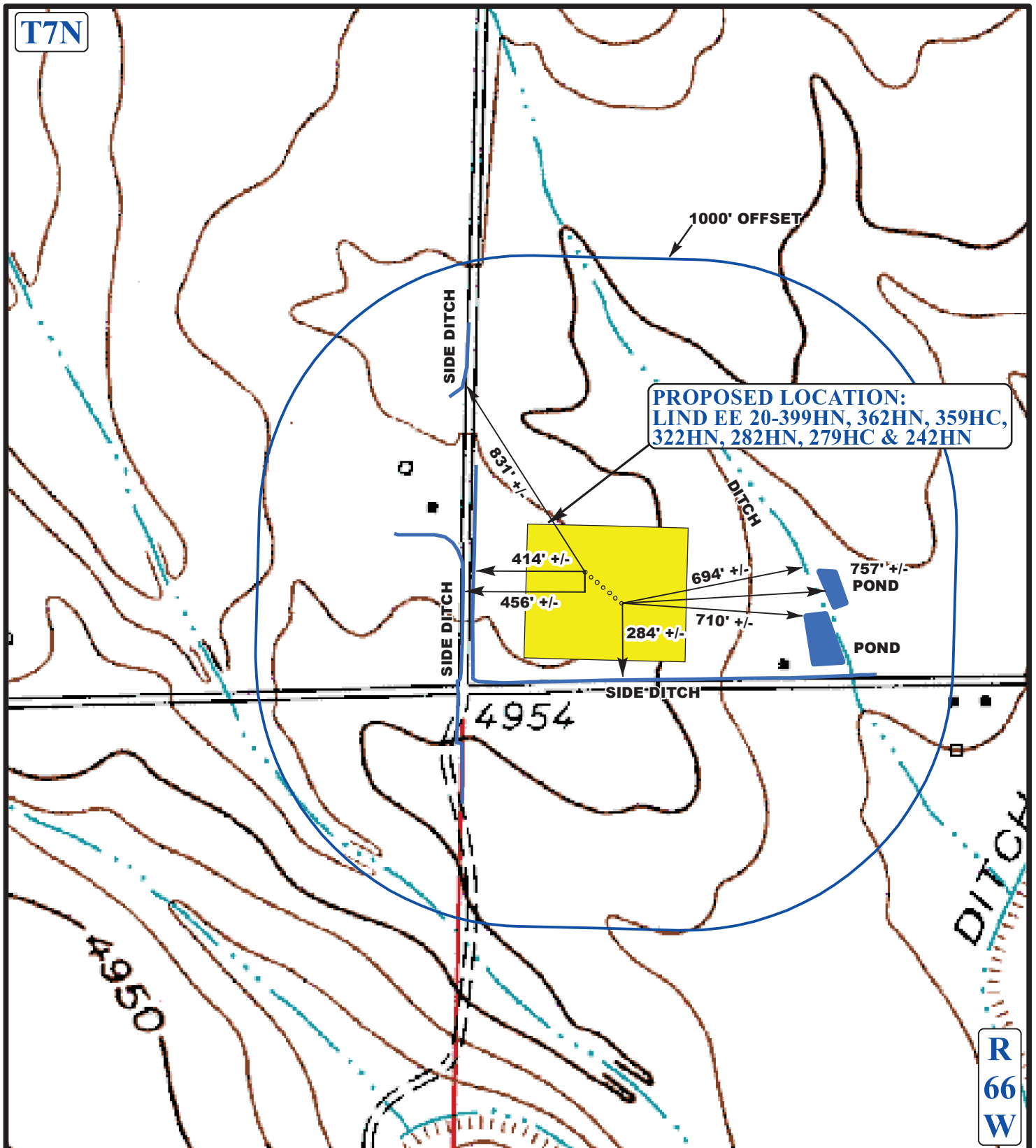


T7N



LEGEND:

- EXISTING WATER
- 1000' OFFSET BOUNDRY
- WATER WELLS



GREAT WESTERN OIL & GAS COMPANY

LIND EE 20-399HN, 362HN, 359HC,
322HN, 282HN, 279HC & 242HN
SECTION 20, T7N, R66W, 6th P.M.
SW 1/4 SW 1/4



Uintah Engineering & Land Surveying
85 South 200 East Vernal, Utah 84078
(435) 789-1017 * FAX (435) 789-1813

**HYDROLOGY
MAP**

08 03 13
MONTH DAY YEAR

SCALE: 1"= 500' DRAWN BY: J.L.H. REV:06-23-14J.L.G.

