

# LEGEND:

PROPOSED LOCATION

# GREAT WESTERN OIL & GAS COMPANY

LIND EE 20-399HN, 362HN, 359HC,  
 322HN, 282HN, 279HC & 242HN  
 SECTION 20, T7N, R66W, 6th P.M.  
 SW 1/4 SW 1/4



**Utah Engineering & Land Surveying**  
 85 South 200 East Vernal, Utah 84078  
 (435) 789-1017 \* FAX (435) 789-1813

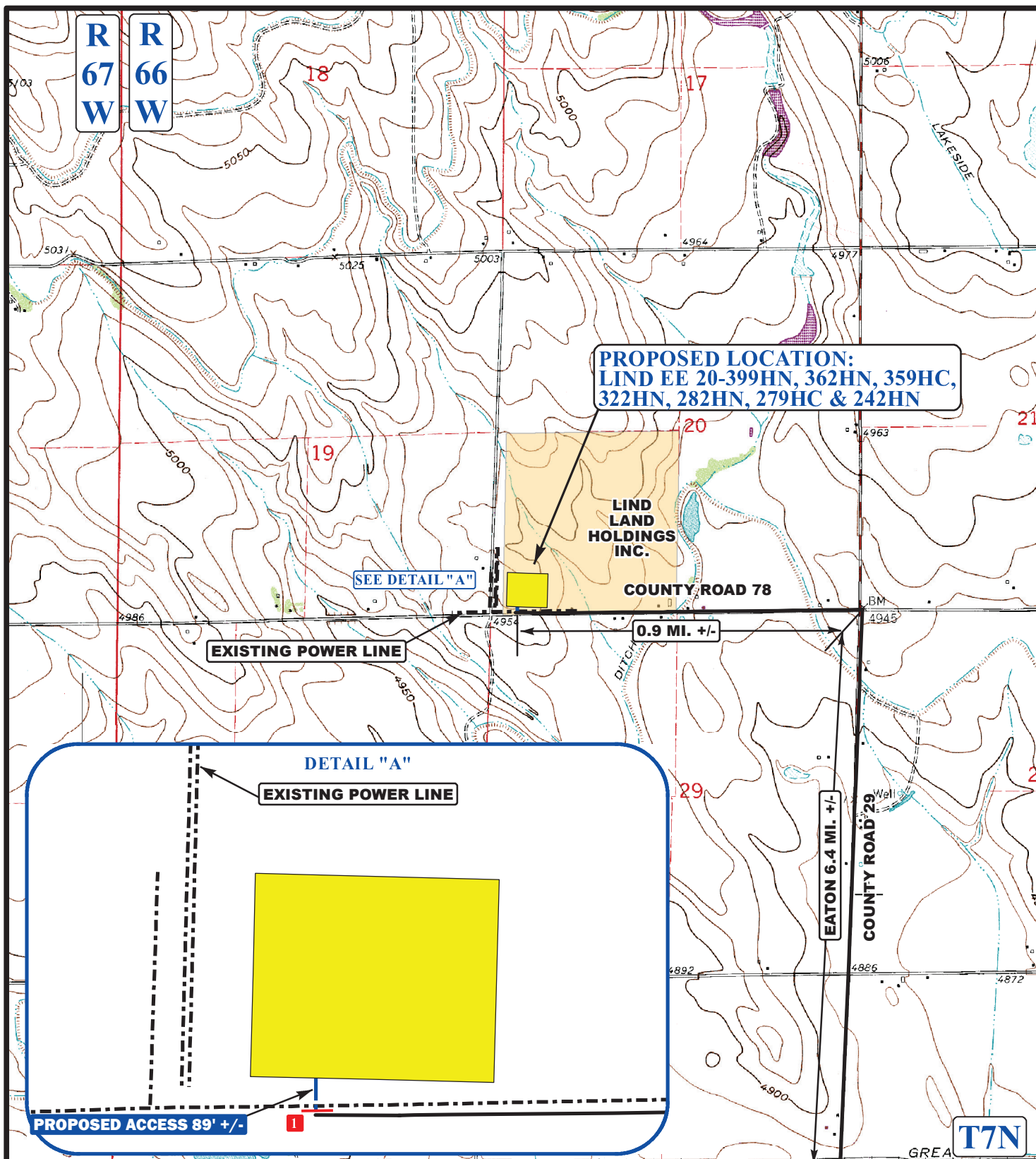


**ACCESS ROAD**  
**MAP**

**08** **03** **13**  
 MONTH DAY YEAR

SCALE: 1:100,000 DRAWN BY: J.L.H. REV:06-23-14 J.L.G.





# LEGEND:

- EXISTING ROADS
- PROPOSED ACCESS
- EXISTING POWER LINE
- 18" CMP REQUIRED

# GREAT WESTERN OIL & GAS COMPANY

LIND EE 20-399HN, 362HN, 359HC,  
322HN, 282HN, 279HC & 242HN  
SECTION 20, T7N, R66W, 6th P.M.  
SW 1/4 SW 1/4



Utah Engineering & Land Surveying  
85 South 200 East Vernal, Utah 84078  
(435) 789-1017 \* FAX (435) 789-1813



ACCESS ROAD  
MAP

08 03 13  
MONTH DAY YEAR

SCALE: 1"=2000' DRAWN BY: J.L.H. REV:06-23-14 J.L.G.

B  
TOPO