

# **Noble Energy, Inc**

**Weld County, CO (NAD 83)**

**Sec 36, T6N R63W (Wells Ranch AA35)**

**Wells Ranch AA35-62-1BHNC**

**Wellbore #1**

**Design: OH**

## **Standard Survey Report**

**03 May, 2014**

# IDS

## Survey Report

<b>Company:</b>	Noble Energy, Inc	<b>Local Co-ordinate Reference:</b>	Well Wells Ranch AA35-62-1BHNC
<b>Project:</b>	Weld County, CO (NAD 83)	<b>TVD Reference:</b>	Well @ 4764.0usft (H&P 277)
<b>Site:</b>	Sec 36, T6N R63W (Wells Ranch AA35)	<b>MD Reference:</b>	Well @ 4764.0usft (H&P 277)
<b>Well:</b>	Wells Ranch AA35-62-1BHNC	<b>North Reference:</b>	Grid
<b>Wellbore:</b>	Wellbore #1	<b>Survey Calculation Method:</b>	Minimum Curvature
<b>Design:</b>	OH	<b>Database:</b>	EDM 5000.1 Single User Db

<b>Project</b>	Weld County, CO (NAD 83)		
<b>Map System:</b>	US State Plane 1983	<b>System Datum:</b>	Mean Sea Level
<b>Geo Datum:</b>	North American Datum 1983		
<b>Map Zone:</b>	Colorado Northern Zone		

Site	Sec 36, T6N R63W (Wells Ranch AA35)				
Site Position:		Northing:	1,404,137.44 usft	Latitude:	40° 26' 14.964 N
From:	Lat/Long	Easting:	3,307,823.52 usft	Longitude:	104° 23' 38.796 W
Position Uncertainty:	0.0 usft	Slot Radius:	13-3/16 "	Grid Convergence:	0.71 °

Well	Wells Ranch AA35-62-1BHNC					
Well Position	+N-S	0.0 usft	Northing:	1,404,064.59 usft	Latitude:	40° 26' 14.244 N
	+E-W	0.0 usft	Easting:	3,307,824.42 usft	Longitude:	104° 23' 38.796 W
Position Uncertainty		0.0 usft	Wellhead Elevation:	0.0 usft	Ground Level:	4,740.0 usft

<b>Wellbore</b>	Wellbore #1				
<b>Magnetics</b>	<b>Model Name</b>	<b>Sample Date</b>	<b>Declination (°)</b>	<b>Dip Angle (°)</b>	<b>Field Strength (nT)</b>
	IGRF2010	1/23/2014	8.31	67.05	52,915

<b>Design</b>	OH				
<b>Audit Notes:</b>					
<b>Version:</b>	1.0	<b>Phase:</b>	ACTUAL	<b>Tie On Depth:</b>	0.0
<b>Vertical Section:</b>	<b>Depth From (TVD) (usft)</b>	<b>+N-S (usft)</b>	<b>+E-W (usft)</b>	<b>Direction (°)</b>	
	0.0	0.0	0.0	264.00	

<b>Survey Program</b>	<b>Date</b>	5/3/2014			
<b>From (usft)</b>	<b>To (usft)</b>	<b>Survey (Wellbore)</b>	<b>Tool Name</b>	<b>Description</b>	
275.0	620.0	MSS Surface (Wellbore #1)	EMS	EMS - Standard	
744.0	6,893.0	MWD Intermediate (Wellbore #1)	MWD	MWD - Standard	
7,027.0	11,192.0	Lateral (Wellbore #1)	Sperry - MWD+IFR1+MS_	Fixed:v2:Rockies, crustal dec + 3-axis correction	

<b>Survey</b>									
<b>Measured Depth (usft)</b>	<b>Inclination (°)</b>	<b>Azimuth (°)</b>	<b>Vertical Depth (usft)</b>	<b>+N-S (usft)</b>	<b>+E-W (usft)</b>	<b>Vertical Section (usft)</b>	<b>Dogleg Rate (°/100usft)</b>	<b>Build Rate (°/100usft)</b>	<b>Turn Rate (°/100usft)</b>
0.0	0.00	0.00	0.0	0.0	0.0	0.0	0.00	0.00	0.00
275.0	0.60	303.40	275.0	0.8	-1.2	1.1	0.22	0.22	0.00
620.0	0.20	266.80	620.0	1.8	-3.3	3.1	0.13	-0.12	-10.61
744.0	0.35	357.32	744.0	2.1	-3.5	3.3	0.33	0.12	73.00
<b>First MWD</b>									
838.0	0.35	334.64	838.0	2.7	-3.7	3.4	0.15	0.00	-24.13
931.0	0.35	334.03	931.0	3.2	-3.9	3.6	0.00	0.00	-0.66
1,025.0	0.44	337.63	1,025.0	3.8	-4.2	3.8	0.10	0.10	3.83
1,119.0	0.53	355.82	1,119.0	4.5	-4.4	3.9	0.19	0.10	19.35

# IDS

## Survey Report

<b>Company:</b>	Noble Energy, Inc	<b>Local Co-ordinate Reference:</b>	Well Wells Ranch AA35-62-1BHNC
<b>Project:</b>	Weld County, CO (NAD 83)	<b>TVD Reference:</b>	Well @ 4764.0usft (H&P 277)
<b>Site:</b>	Sec 36, T6N R63W (Wells Ranch AA35)	<b>MD Reference:</b>	Well @ 4764.0usft (H&P 277)
<b>Well:</b>	Wells Ranch AA35-62-1BHNC	<b>North Reference:</b>	Grid
<b>Wellbore:</b>	Wellbore #1	<b>Survey Calculation Method:</b>	Minimum Curvature
<b>Design:</b>	OH	<b>Database:</b>	EDM 5000.1 Single User Db

Survey										
Measured Depth (usft)	Inclination (°)	Azimuth (°)	Vertical Depth (usft)	+N/-S (usft)	+E/-W (usft)	Vertical Section (usft)	Dogleg Rate (°/100usft)	Build Rate (°/100usft)	Turn Rate (°/100usft)	
1,214.0	0.79	218.27	1,214.0	4.5	-4.8	4.3	1.30	0.27	-144.79	
1,307.0	2.78	203.60	1,306.9	1.9	-6.1	5.9	2.18	2.14	-15.77	
1,402.0	4.31	194.81	1,401.7	-3.7	-7.9	8.3	1.70	1.61	-9.25	
1,497.0	6.07	193.23	1,496.3	-12.0	-10.0	11.2	1.86	1.85	-1.66	
1,591.0	4.92	190.76	1,589.9	-20.8	-11.9	14.0	1.25	-1.22	-2.63	
1,686.0	7.21	190.06	1,684.4	-30.7	-13.7	16.8	2.41	2.41	-0.74	
1,781.0	8.71	189.45	1,778.5	-43.7	-15.9	20.4	1.58	1.58	-0.64	
1,876.0	10.29	191.56	1,872.2	-59.1	-18.8	24.9	1.70	1.66	2.22	
1,970.0	11.78	192.26	1,964.4	-76.7	-22.5	30.4	1.59	1.59	0.74	
2,065.0	12.93	195.60	2,057.2	-96.4	-27.4	37.3	1.42	1.21	3.52	
2,159.0	13.63	196.13	2,148.7	-117.1	-33.3	45.4	0.76	0.74	0.56	
2,254.0	13.01	194.89	2,241.1	-138.2	-39.2	53.4	0.72	-0.65	-1.31	
2,349.0	13.19	194.10	2,333.7	-159.1	-44.6	61.0	0.27	0.19	-0.83	
2,443.0	11.96	193.05	2,425.4	-179.0	-49.4	67.8	1.33	-1.31	-1.12	
2,538.0	12.84	197.93	2,518.2	-198.6	-54.9	75.3	1.44	0.93	5.14	
2,633.0	12.13	198.32	2,611.0	-218.1	-61.3	83.7	0.75	-0.75	0.41	
2,728.0	12.57	199.38	2,703.8	-237.3	-67.8	92.2	0.52	0.46	1.12	
2,822.0	13.10	196.56	2,795.4	-257.2	-74.2	100.7	0.87	0.56	-3.00	
2,917.0	13.72	196.39	2,887.8	-278.3	-80.5	109.1	0.65	0.65	-0.18	
3,012.0	13.72	196.74	2,980.1	-299.9	-86.9	117.8	0.09	0.00	0.37	
3,107.0	12.49	196.74	3,072.6	-320.6	-93.1	126.1	1.29	-1.29	0.00	
3,202.0	12.13	198.06	3,165.4	-339.9	-99.2	134.1	0.48	-0.38	1.39	
3,297.0	11.26	199.11	3,258.5	-358.1	-105.3	142.2	0.94	-0.92	1.11	
3,391.0	10.29	198.23	3,350.8	-374.8	-110.9	149.5	1.05	-1.03	-0.94	
3,486.0	9.41	196.21	3,444.4	-390.3	-115.8	155.9	1.00	-0.93	-2.13	
3,580.0	9.15	196.04	3,537.2	-404.9	-120.0	161.6	0.28	-0.28	-0.18	
3,675.0	8.71	193.23	3,631.0	-419.1	-123.7	166.8	0.65	-0.46	-2.96	
3,770.0	7.83	189.45	3,725.0	-432.5	-126.4	170.9	1.09	-0.93	-3.98	
3,865.0	6.07	186.81	3,819.3	-443.9	-128.1	173.7	1.88	-1.85	-2.78	
3,959.0	3.34	175.21	3,913.0	-451.6	-128.4	174.9	3.06	-2.90	-12.34	
4,054.0	2.29	156.22	4,007.9	-456.0	-127.4	174.4	1.46	-1.11	-19.99	
4,149.0	2.64	154.11	4,102.8	-459.8	-125.7	173.1	0.38	0.37	-2.22	
4,243.0	2.37	116.32	4,196.7	-462.6	-123.0	170.7	1.75	-0.29	-40.20	
4,338.0	2.64	106.92	4,291.6	-464.1	-119.2	167.0	0.52	0.28	-9.89	
4,432.0	2.20	74.48	4,385.6	-464.2	-115.4	163.2	1.51	-0.47	-34.51	
4,527.0	2.37	75.01	4,480.5	-463.2	-111.7	159.5	0.18	0.18	0.56	
4,621.0	2.11	80.99	4,574.4	-462.4	-108.1	155.8	0.37	-0.28	6.36	
4,716.0	2.37	45.66	4,669.3	-460.8	-105.0	152.6	1.45	0.27	-37.19	
4,811.0	2.11	44.16	4,764.3	-458.2	-102.4	149.7	0.28	-0.27	-1.58	
4,906.0	1.76	51.72	4,859.2	-456.0	-100.0	147.1	0.46	-0.37	7.96	
5,000.0	1.67	49.00	4,953.2	-454.2	-97.8	144.8	0.13	-0.10	-2.89	
5,095.0	1.06	19.55	5,048.1	-452.5	-96.5	143.2	0.96	-0.64	-31.00	
5,190.0	1.32	299.13	5,143.1	-451.1	-97.2	143.8	1.63	0.27	-84.65	

# IDS

## Survey Report

<b>Company:</b>	Noble Energy, Inc	<b>Local Co-ordinate Reference:</b>	Well Wells Ranch AA35-62-1BHNC
<b>Project:</b>	Weld County, CO (NAD 83)	<b>TVD Reference:</b>	Well @ 4764.0usft (H&P 277)
<b>Site:</b>	Sec 36, T6N R63W (Wells Ranch AA35)	<b>MD Reference:</b>	Well @ 4764.0usft (H&P 277)
<b>Well:</b>	Wells Ranch AA35-62-1BHNC	<b>North Reference:</b>	Grid
<b>Wellbore:</b>	Wellbore #1	<b>Survey Calculation Method:</b>	Minimum Curvature
<b>Design:</b>	OH	<b>Database:</b>	EDM 5000.1 Single User Db

Survey										
Measured Depth (usft)	Inclination (°)	Azimuth (°)	Vertical Depth (usft)	+N/-S (usft)	+E/-W (usft)	Vertical Section (usft)	Dogleg Rate (°/100usft)	Build Rate (°/100usft)	Turn Rate (°/100usft)	
5,284.0	1.32	297.38	5,237.1	-450.1	-99.1	145.6	0.04	0.00	-1.86	
5,379.0	1.85	253.17	5,332.1	-450.0	-101.5	148.0	1.36	0.56	-46.54	
5,474.0	1.58	259.58	5,427.0	-450.7	-104.3	150.8	0.35	-0.28	6.75	
5,569.0	1.49	271.98	5,522.0	-450.9	-106.8	153.3	0.36	-0.09	13.05	
5,663.0	1.14	272.59	5,616.0	-450.8	-108.9	155.4	0.37	-0.37	0.65	
5,758.0	1.06	267.05	5,711.0	-450.8	-110.8	157.3	0.14	-0.08	-5.83	
5,853.0	0.88	279.01	5,805.9	-450.8	-112.4	158.8	0.28	-0.19	12.59	
5,924.0	0.88	274.52	5,876.9	-450.6	-113.4	159.9	0.10	0.00	-6.32	
5,946.0	0.88	272.25	5,898.9	-450.6	-113.8	160.2	0.16	0.00	-10.32	
5,994.0	2.90	255.81	5,946.9	-450.9	-115.3	161.8	4.31	4.21	-34.25	
6,041.0	7.03	253.18	5,993.7	-452.0	-119.2	165.8	8.80	8.79	-5.60	
6,088.0	7.21	277.35	6,040.4	-452.5	-124.9	171.5	6.34	0.38	51.43	
6,136.0	10.11	286.75	6,087.8	-450.9	-131.9	178.3	6.70	6.04	19.58	
6,183.0	13.45	288.16	6,133.8	-448.0	-141.1	187.1	7.13	7.11	3.00	
6,230.0	15.83	286.22	6,179.3	-444.5	-152.4	198.0	5.17	5.06	-4.13	
6,278.0	17.94	288.16	6,225.2	-440.4	-165.7	210.8	4.55	4.40	4.04	
6,325.0	22.34	283.23	6,269.3	-436.1	-181.3	225.9	10.03	9.36	-10.49	
6,372.0	27.26	280.42	6,312.0	-432.1	-200.6	244.7	10.76	10.47	-5.98	
6,420.0	32.18	277.43	6,353.7	-428.4	-224.1	267.7	10.70	10.25	-6.23	
6,467.0	35.53	272.34	6,392.7	-426.2	-250.2	293.4	9.33	7.13	-10.83	
6,514.0	40.01	268.47	6,429.8	-426.1	-279.0	321.9	10.78	9.53	-8.23	
6,562.0	45.64	267.06	6,465.0	-427.4	-311.5	354.5	11.90	11.73	-2.94	
6,609.0	50.83	266.45	6,496.3	-429.4	-346.5	389.5	11.08	11.04	-1.30	
6,656.0	54.61	266.89	6,524.8	-431.5	-383.9	426.8	8.08	8.04	0.94	
6,704.0	60.60	266.27	6,550.5	-434.0	-424.3	467.3	12.53	12.48	-1.29	
6,751.0	67.88	266.27	6,570.9	-436.7	-466.5	509.6	15.49	15.49	0.00	
6,798.0	73.34	267.59	6,586.5	-439.1	-510.8	553.8	11.91	11.62	2.81	
6,846.0	79.14	271.28	6,597.9	-439.5	-557.4	600.2	14.20	12.08	7.69	
6,893.0	84.50	273.57	6,604.6	-437.5	-603.8	646.2	12.38	11.40	4.87	
6,952.0	87.46	274.58	6,608.7	-433.4	-662.5	704.2	5.30	5.02	1.71	
<b>Actual 7" csg @6952' MD / 182' FSL &amp; 490' FEL - Actual 7" csg</b>										
7,027.0	91.23	275.85	6,609.6	-426.6	-737.2	777.7	5.30	5.02	1.70	
<b>First Lateral MWD</b>										
7,122.0	90.43	272.47	6,608.2	-419.7	-831.9	871.2	3.66	-0.84	-3.56	
7,217.0	88.79	268.67	6,608.9	-418.7	-926.9	965.6	4.36	-1.73	-4.00	
7,312.0	90.81	268.67	6,609.2	-420.9	-1,021.9	1,060.2	2.13	2.13	0.00	
7,406.0	92.30	268.07	6,606.7	-423.6	-1,115.8	1,153.9	1.71	1.59	-0.64	
7,501.0	91.24	267.39	6,603.7	-427.4	-1,210.7	1,248.7	1.33	-1.12	-0.72	
7,596.0	90.13	268.59	6,602.6	-430.7	-1,305.6	1,343.4	1.72	-1.17	1.26	
7,691.0	88.11	268.70	6,604.0	-432.9	-1,400.5	1,438.1	2.13	-2.13	0.12	
7,786.0	89.31	268.45	6,606.2	-435.3	-1,495.5	1,532.8	1.29	1.26	-0.26	
7,880.0	90.38	268.43	6,606.4	-437.9	-1,589.5	1,626.5	1.14	1.14	-0.02	
7,975.0	89.33	268.38	6,606.7	-440.5	-1,684.4	1,721.2	1.11	-1.11	-0.05	
8,069.0	89.24	267.05	6,607.9	-444.2	-1,778.3	1,815.0	1.42	-0.10	-1.41	

# IDS

## Survey Report

<b>Company:</b>	Noble Energy, Inc	<b>Local Co-ordinate Reference:</b>	Well Wells Ranch AA35-62-1BHNC
<b>Project:</b>	Weld County, CO (NAD 83)	<b>TVD Reference:</b>	Well @ 4764.0usft (H&P 277)
<b>Site:</b>	Sec 36, T6N R63W (Wells Ranch AA35)	<b>MD Reference:</b>	Well @ 4764.0usft (H&P 277)
<b>Well:</b>	Wells Ranch AA35-62-1BHNC	<b>North Reference:</b>	Grid
<b>Wellbore:</b>	Wellbore #1	<b>Survey Calculation Method:</b>	Minimum Curvature
<b>Design:</b>	OH	<b>Database:</b>	EDM 5000.1 Single User Db

Survey									
Measured Depth (usft)	Inclination (°)	Azimuth (°)	Vertical Depth (usft)	+N/-S (usft)	+E/-W (usft)	Vertical Section (usft)	Dogleg Rate (°/100usft)	Build Rate (°/100usft)	Turn Rate (°/100usft)
8,164.0	89.37	266.31	6,609.0	-449.7	-1,873.2	1,909.9	0.79	0.14	-0.78
8,259.0	89.59	265.12	6,609.9	-456.8	-1,967.9	2,004.9	1.27	0.23	-1.25
8,353.0	90.13	266.78	6,610.1	-463.5	-2,061.7	2,098.8	1.86	0.57	1.77
8,448.0	88.28	268.20	6,611.4	-467.6	-2,156.5	2,193.6	2.45	-1.95	1.49
8,543.0	91.06	268.83	6,612.0	-470.1	-2,251.5	2,288.3	3.00	2.93	0.66
8,638.0	90.03	269.27	6,611.1	-471.7	-2,346.5	2,382.9	1.18	-1.08	0.46
8,733.0	90.11	266.32	6,610.9	-475.3	-2,441.4	2,477.7	3.11	0.08	-3.11
8,827.0	89.81	266.65	6,611.0	-481.1	-2,535.2	2,571.6	0.47	-0.32	0.35
8,922.0	89.48	266.34	6,611.6	-486.9	-2,630.0	2,666.5	0.48	-0.35	-0.33
9,017.0	90.57	269.48	6,611.6	-490.4	-2,725.0	2,761.3	3.50	1.15	3.31
9,112.0	92.64	270.64	6,608.9	-490.3	-2,819.9	2,855.7	2.50	2.18	1.22
9,207.0	92.01	270.19	6,605.0	-489.6	-2,914.8	2,950.0	0.81	-0.66	-0.47
9,302.0	89.52	269.74	6,603.8	-489.6	-3,009.8	3,044.5	2.66	-2.62	-0.47
9,396.0	90.59	270.33	6,603.7	-489.6	-3,103.8	3,138.0	1.30	1.14	0.63
9,491.0	88.43	269.66	6,604.5	-489.6	-3,198.8	3,232.5	2.38	-2.27	-0.71
9,586.0	89.15	269.67	6,606.5	-490.1	-3,293.8	3,327.0	0.76	0.76	0.01
9,681.0	90.04	269.93	6,607.2	-490.5	-3,388.8	3,421.5	0.98	0.94	0.27
9,776.0	88.47	269.05	6,608.4	-491.3	-3,483.8	3,516.0	1.89	-1.65	-0.93
9,871.0	91.08	270.19	6,608.8	-492.0	-3,578.8	3,610.6	3.00	2.75	1.20
9,966.0	87.38	268.74	6,610.1	-492.8	-3,673.7	3,705.1	4.18	-3.89	-1.53
10,060.0	87.80	268.34	6,614.0	-495.2	-3,767.6	3,798.7	0.62	0.45	-0.43
10,155.0	90.78	268.07	6,615.2	-498.2	-3,862.6	3,893.5	3.15	3.14	-0.28
10,250.0	90.79	267.63	6,613.9	-501.8	-3,957.5	3,988.2	0.46	0.01	-0.46
10,345.0	90.87	270.13	6,612.5	-503.6	-4,052.4	4,082.9	2.63	0.08	2.63
10,440.0	89.22	270.95	6,612.4	-502.7	-4,147.4	4,177.3	1.94	-1.74	0.86
10,535.0	89.29	270.56	6,613.7	-501.5	-4,242.4	4,271.6	0.42	0.07	-0.41
10,629.0	90.56	270.27	6,613.8	-500.8	-4,336.4	4,365.0	1.39	1.35	-0.31
10,724.0	89.96	271.90	6,613.4	-499.0	-4,431.4	4,459.3	1.83	-0.63	1.72
10,818.0	88.92	268.83	6,614.3	-498.4	-4,525.4	4,552.7	3.45	-1.11	-3.27
10,913.0	89.48	268.95	6,615.6	-500.2	-4,620.3	4,647.3	0.60	0.59	0.13
11,008.0	89.01	266.57	6,616.9	-504.0	-4,715.3	4,742.1	2.55	-0.49	-2.51
11,102.0	89.57	267.22	6,618.0	-509.0	-4,809.1	4,836.0	0.91	0.60	0.69
11,127.0	89.34	266.31	6,618.3	-510.5	-4,834.1	4,860.9	3.75	-0.92	-3.64
Last Lateral MWD									
11,192.0	89.34	266.31	6,619.0	-514.6	-4,898.9	4,925.9	0.00	0.00	0.00
PTD @ 11127' MD / 6619' TVD / 146' FSL & 534' FWL									

Casing Points				
Measured Depth (usft)	Vertical Depth (usft)	Name	Casing Diameter (")	Hole Diameter (")
6,952.0	6,608.7	Actual 7" csg	7	8-3/4

# IDS

## Survey Report

<b>Company:</b>	Noble Energy, Inc	<b>Local Co-ordinate Reference:</b>	Well Wells Ranch AA35-62-1BHNC
<b>Project:</b>	Weld County, CO (NAD 83)	<b>TVD Reference:</b>	Well @ 4764.0usft (H&P 277)
<b>Site:</b>	Sec 36, T6N R63W (Wells Ranch AA35)	<b>MD Reference:</b>	Well @ 4764.0usft (H&P 277)
<b>Well:</b>	Wells Ranch AA35-62-1BHNC	<b>North Reference:</b>	Grid
<b>Wellbore:</b>	Wellbore #1	<b>Survey Calculation Method:</b>	Minimum Curvature
<b>Design:</b>	OH	<b>Database:</b>	EDM 5000.1 Single User Db

### Design Annotations

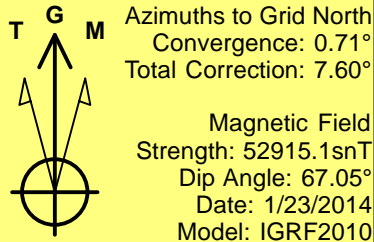
Measured Depth (usft)	Vertical Depth (usft)	Local Coordinates		Comment
		+N/-S (usft)	+E/-W (usft)	
744.0	744.0	2.1	-3.5	First MWD
6,952.0	6,608.7	-433.4	-662.5	Actual 7" csg @6952' MD / 182' FSL & 490' FEL
7,027.0	6,609.6	-426.6	-737.2	First Lateral MWD
11,127.0	6,618.3	-510.5	-4,834.1	Last Lateral MWD
11,192.0	6,619.0	-514.6	-4,898.9	PTD @ 11127' MD / 6619' TVD / 146' FSL & 534' FWL

Checked By: \_\_\_\_\_ Approved By: \_\_\_\_\_ Date: \_\_\_\_\_



Weld County, CO (NAD 83)  
Sec 36, T6N R63W (Wells Ranch AA35)  
Wells Ranch AA35-62-1BHNC

H&P 277  
Plan #2



ACTUAL 7" CASING DETAILS

TVD	MD	Name	Size
6608.7	6952.0	Actual 7" csg	7

SECTION DETAILS

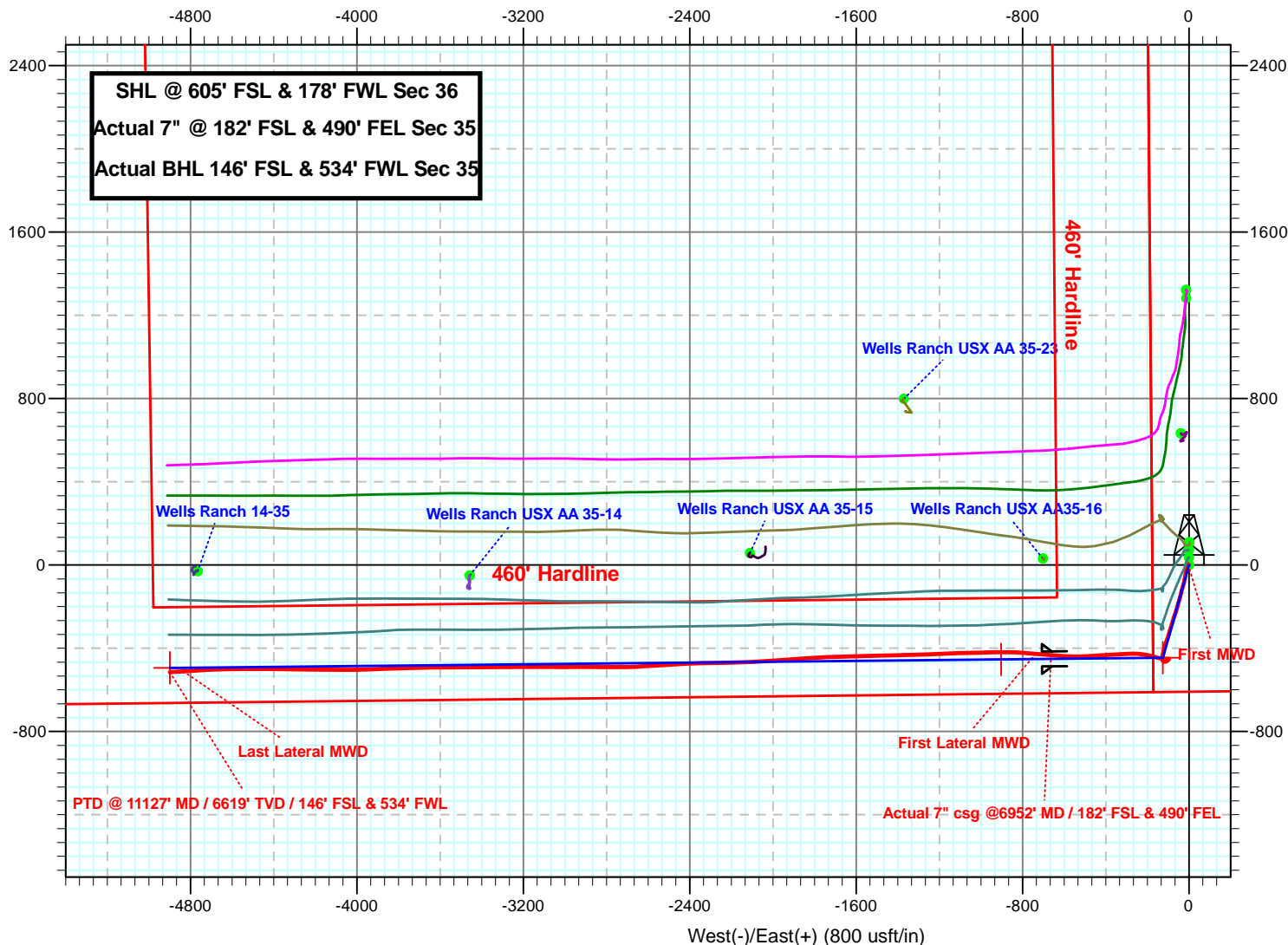
MD	Inc	Azi	TVD	+N/-S	+E/-W	Dleg	TFace	VSec	Target
0.0	0.00	0.00	0.0	0.0	0.0	0.00	0.00	0.0	
1200.0	0.00	0.00	1200.0	0.0	0.0	0.00	0.00	0.0	
1800.2	12.00	195.67	1795.8	-60.3	-16.9	2.00	195.67	22.9	
3422.5	12.00	195.67	3382.7	-385.2	-108.1	0.00	0.00	146.2	
4022.7	0.00	0.00	3978.5	-445.5	-125.0	2.00	180.00	169.1	
6006.7	0.00	0.00	5962.5	-445.5	-125.0	0.00	0.00	169.1	KOP Pln #2 WR AA35-62-1BHNC
6951.2	85.00	269.42	6596.7	-451.4	-706.1	9.00	269.42	747.8	
7026.2	85.00	269.42	6603.2	-452.1	-780.8	0.00	0.00	822.3	
7148.7	89.90	269.42	6608.7	-453.4	-903.2	4.00	-0.05	944.1	
11144.7	89.90	269.42	6615.6	-494.2	-4899.0	0.00	0.00	4923.8	PBHL WR AA35-62-1BHNC

SITE DETAILS: Sec 36, T6N R63W (Wells Ranch AA35)

Site Centre Northing: 1404137.44  
Easting: 3307823.51  
Positional Uncertainty: 0.0  
Convergence: 0.71  
Local North: Grid

WELL DETAILS: Wells Ranch AA35-62-1BHNC

+N/-S	+E/-W	Ground Level:	Latitude	Longitude
0.0	0.0	4740.0	40° 26' 14.244 N	104° 23' 38.796 W





Weld County, CO (NAD 83)  
Sec 36, T6N R63W (Wells Ranch AA35)  
Wells Ranch AA35-62-1BHNC

H&P 277  
Plan #2



Azimuths to Grid North  
Convergence: 0.71°  
Total Correction: 7.60°

Magnetic Field  
Strength: 52915.1snT  
Dip Angle: 67.05°  
Date: 1/23/2014  
Model: IGRF2010

Plan #3

MD	Inc	Azi	TVD	+N-S	+E-W	Dleg	TFace	VSect	Target
0.0	0.00	0.00	0.0	0.0	0.0	0.00	0.00	0.0	
1200.0	0.00	0.00	1200.0	0.0	0.0	0.00	0.00	0.0	
1800.2	12.00	195.67	1795.8	-60.3	-16.9	2.00	195.67	22.9	
3422.5	12.00	195.67	3382.7	-385.2	-108.1	0.00	0.00	146.2	
4022.7	0.00	0.00	3978.5	-445.5	-125.0	2.00	180.00	169.1	
6006.7	0.00	0.00	5962.5	-445.5	-125.0	0.00	0.00	169.1	KOP Pln #2 WR AA35-62-1BHNC
6951.2	85.00	269.42	6596.7	-451.4	-706.1	9.00	269.42	747.8	
7026.2	85.00	269.42	6603.2	-452.1	-780.8	0.00	0.00	822.3	
7148.7	89.90	269.42	6608.7	-453.4	-903.2	4.00	-0.05	944.1	
11144.7	89.90	269.42	6615.6	-494.2	-4899.0	0.00	0.00	4923.8	PBHL WR AA35-62-1BHNC

WELL DETAILS: Wells Ranch AA35-62-1BHNC

+N-S	+E-W	Northing	Easting	Latitude	Longitude
0.0	0.0404064.58	3307824.4240° 26'	14.244 N	104° 23' 38.796 W	

SHL @ 605' FSL & 178' FWL Sec 36

Actual 7" 182' FSL & 490' FEL Sec 35

Actual BHL 146' FSL & 534' FWL Sec 35

SITE DETAILS: Sec 36, T6N R63W (Wells Ranch AA35)

Site Centre Northing: 1404137.44  
Easting: 3307823.51  
Positional Uncertainty: 0.0  
Convergence: 0.71  
Local North: Grid

ACTUAL 7" CASING DETAILS

TVD	MD	Name	Size
6608.7	6952.0	Actual 7" csg	7

