

LEGEND:

 **PROPOSED LOCATION**



BILL BARRETT CORPORATION

ANSCHUTZ STATE 5-62-26_25 NWSW PAD
#5-62-26-4841CH2, 4841BH2, 3340CH2, 3340BH2 & 3225CH2
SECTION 26 T5N, R62W, 6th P.M.
NW 1/4 SW 1/4

DRAWN BY: J.L.G.

DATE DRAWN: 06-10-14

SCALE: 1:100,000

REV: 00-00-00

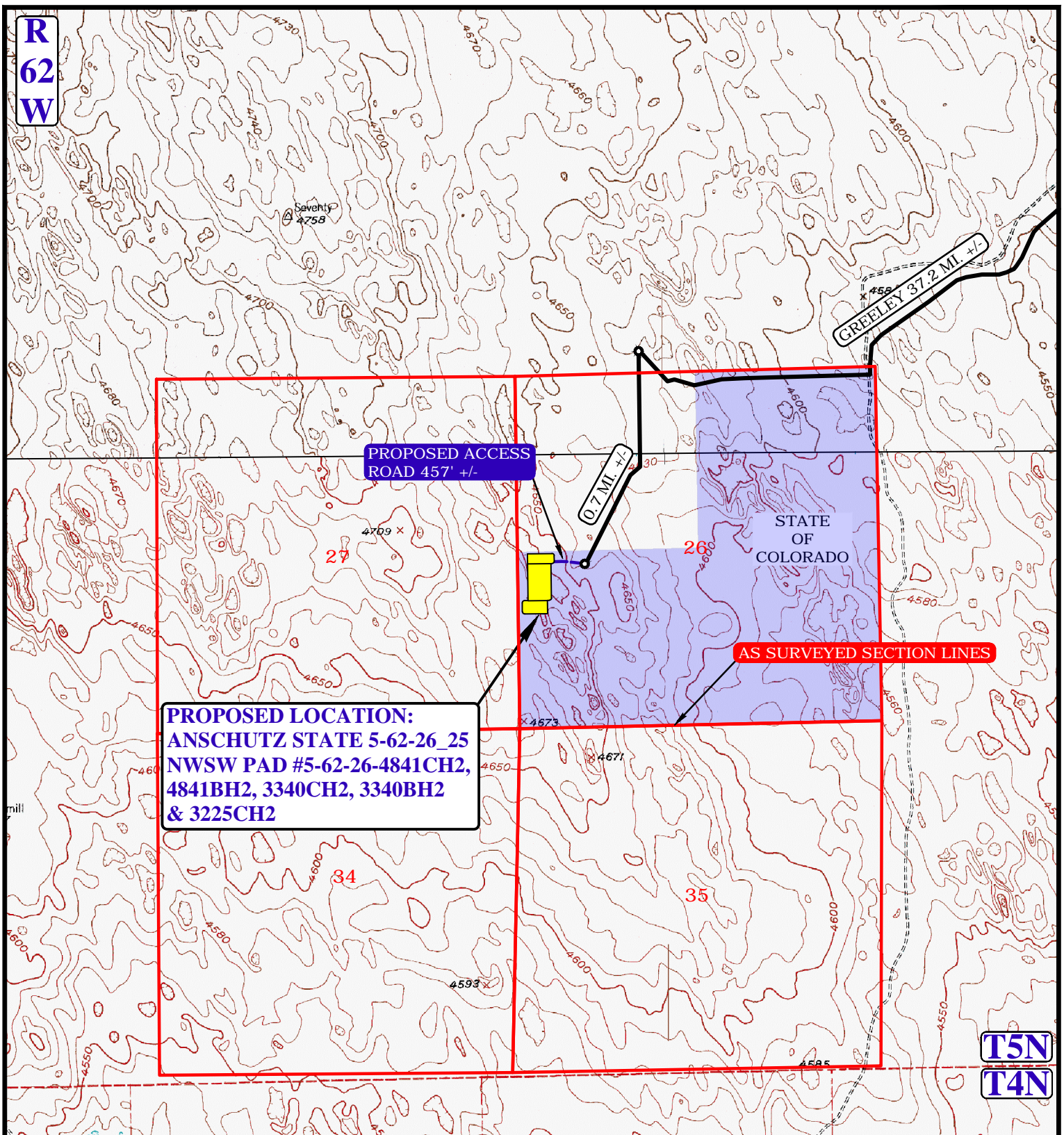
ACCESS ROAD MAP

TOPO A



UELS, LLC
Corporate Office * 85 South 200 East
Vernal, UT 84078 * (435) 789-1017

R
62
W



NOTE: PARCEL DATA SHOWN HAS BEEN OBTAINED FROM VARIOUS SOURCES AND SHOULD BE USED FOR MAPPING, GRAPHIC AND PLANNING PURPOSES ONLY. NO WARRANTY IS MADE BY UINTAH ENGINEERING AND LAND SURVEYING (UELS) FOR ACCURACY OF THE PARCEL DATA.

LEGEND:

- EXISTING ROAD
- PROPOSED ROAD
- EXISTING FENCE

BILL BARRETT CORPORATION

ANSCHUTZ STATE 5-62-26_25 NWSW PAD
#5-62-26-4841CH2, 4841BH2, 3340CH2, 3340BH2 & 3225CH2
SECTION 26 T5N, R62W, 6th P.M.
NW 1/4 SW 1/4

DRAWN BY: J.L.G.	DATE DRAWN: 06-10-14
SCALE: 1"=2000'	REV: 00-00-00
ACCESS ROAD MAP	TOPO B



UELS, LLC
Corporate Office * 85 South 200 East
Vernal, UT 84078 * (435) 789-1017

