

KERR-MCGEE OIL AND GAS ONSHORE LP
STATE 4-16
SW NW 16 1N 68W 1,423' FNL 1,046' FWL
WELD,COLORADO
08/15/2014

AREA: W3

ROUTE: W36 Spud: 12/25/2008

WINS No.: 92922

AFE/WO#: 88504839

API#: 0512329118

GL: 5159

KB: 5174

MTD: 8160

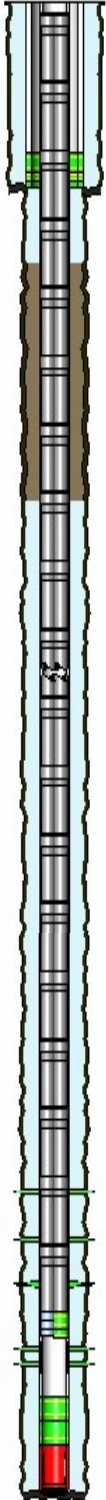
TVD: 8085

LOG MD: 8162

PBMD: 8118

PBTVD: 8043

Directions: WCR 10 & WCR 5; EAST 2/10 MILE; SOUTH 3/10 MILE INTO



<u>HOLE SECTIONS</u>	<u>Size</u>	<u>Top</u>	<u>Btm</u>	<u>TD Date</u>
SURFACE	12.25	15	1005	12/25/2008
PRODUCTION	7.88	1005	8160	12/28/2008

<u>TUBULARS</u>	<u>Tool Type</u>	<u>Joints</u>	<u>Size</u>	<u>Weight</u>	<u>Grade</u>	<u>Thread</u>	<u>Top D</u>	<u>Bottom D</u>
SURFACE CASING	Casing	21	8.63	24.00	J-55	ST&C	15	949
	Baffle	1	8.63		J-55		949	950
	Shoe Joint	1	8.63	24.00	J-55	ST&C	950	994
	Saw Tooth Shoe	1	8.63		J-55		994	995
PRODUCTION CASING	Casing	186	4.50	11.60	I-80	LT&C	15	8118
	Latch Down Baffle	1	4.50				8118	8118
	Shoe Joint	1	4.50	11.60	I-80	LT&C	8118	8146
	Casing Float Shoe	1	4.50		I-80		8146	8148
PRODUCTION TUBING	Tubing	255	2.37	4.70	J-55	External-Ups	16	7961
	XN Profile Nipple	1	2.38				7961	7962
	Notched Collar	1	2.38				7962	7963

<u>CEMENT JOBS</u>	<u>Stage</u>	<u>Sacks</u>	<u>Cement Jobs</u>	<u>Top D</u>	<u>Btm D</u>	<u>cbl</u>
SURFACE CASING	PRIM CMT 1ST STAGE	730	LEAD TYPE 3	15	997	No
PRODUCTION CASING	PRIM CMT 1ST STAGE	470	LEAD 35/65 POZ-MIX	3090	7200	Yes
	PRIM CMT 1ST STAGE	160	TAIL 50/50 POZ-MIX	7200	8148	Yes
PRODUCTION CASING	SQUEEZE JOB	130	LEAD FRESH WATER	1000	1491	Yes

<u>PERFORATIONS</u>	<u>Formation</u>	<u>Zone</u>	<u>Top</u>	<u>Btm</u>	<u>Date</u>	<u>Reason</u>	<u>Comments</u>
			1490	1491	08/05/2014	CEMENT SQUEEZE	
	NIOBRARA	A	7619	7623	02/06/2009	PRODUCTION	NIOBRARA A
	NIOBRARA	B	7752	7763	02/06/2009	PRODUCTION	NIOBRARA B
	NIOBRARA	C	7865	7870	02/06/2009	PRODUCTION	NIOBRARA C
	CODELL		7990	8004	01/26/2009	PRODUCTION	

Comments: