



RADIAL CEMENT BOND LOG
GAMMA RAY
CCL

Company KERR MCGEE OIL AND GAS ONSHORE
Well UPRR 42 PAN AM AO 1
Field WATTENBERG
County WELD
State COLORADO

Company KERR MCGEE OIL AND GAS ONSHORE
Well UPRR 42 PAN AM AO 1
Field WATTENBERG
County WELD State COLORADO

Location: API # : 05-123-09344
SHL: 990' FNL 1.160' FEL
NE/NE
Permanent Datum SEC 35 TWP 2N RGE 67W
Log Measured From KB 10' Elevation 4940'
Drilling Measured From K.B
Other Services
K.B. 4950
D.F. 4949
G.L. 4940

Date	8/7/14
Run Number	ONE
Depth Driller	8150'
Depth Logger	5270'
Bottom Logged Interval	5270'
Top Log Interval	4074'
Open Hole Size	7.88
Type Fluid	WATER
Density / Viscosity	1.0
Max. Recorded Temp.	181 DEG F
Estimated Cement Top	4180'
Time Well Ready	NA
Time Logger on Bottom	4740
Equipment Number	4740
Location	GREELEY, CO
Recorded By	C. SHARP
Witnessed By	L. WEBB

Borehole Record				Tubing Record			
Run Number	Bit	From	To	Size	Weight	From	To
ONE							
TWO							
THREE							

Casing Record	Size	Wgt/Ft	Top	Bottom
Surface String	8.63	24#	10	216
Prot. String				
Production String	4.5	10.5#	10	8149
Liner				

<<< Fold Here >>>

All interpretations are opinions based on inferences from electrical or other measurements and we cannot and do not guarantee the accuracy or correctness of any interpretation, and we shall not, except in the case of gross or willful negligence on our part, be liable or responsible for any loss, costs, damages, or expenses incurred or sustained by anyone resulting from any interpretation made by any of our officers, agents or employees. These interpretations are also subject to our general terms and conditions set out in our current Price Schedule.

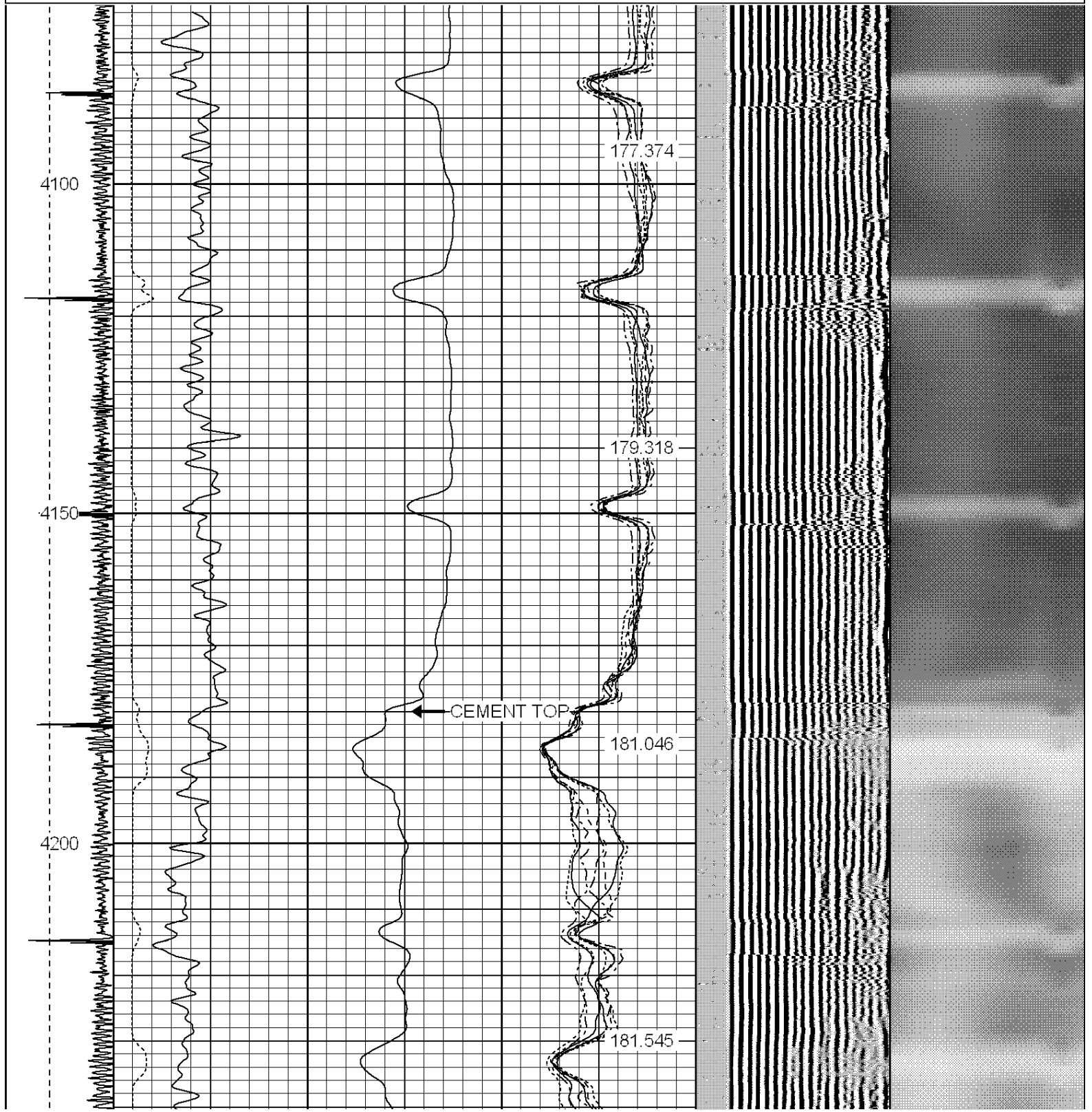
Comments

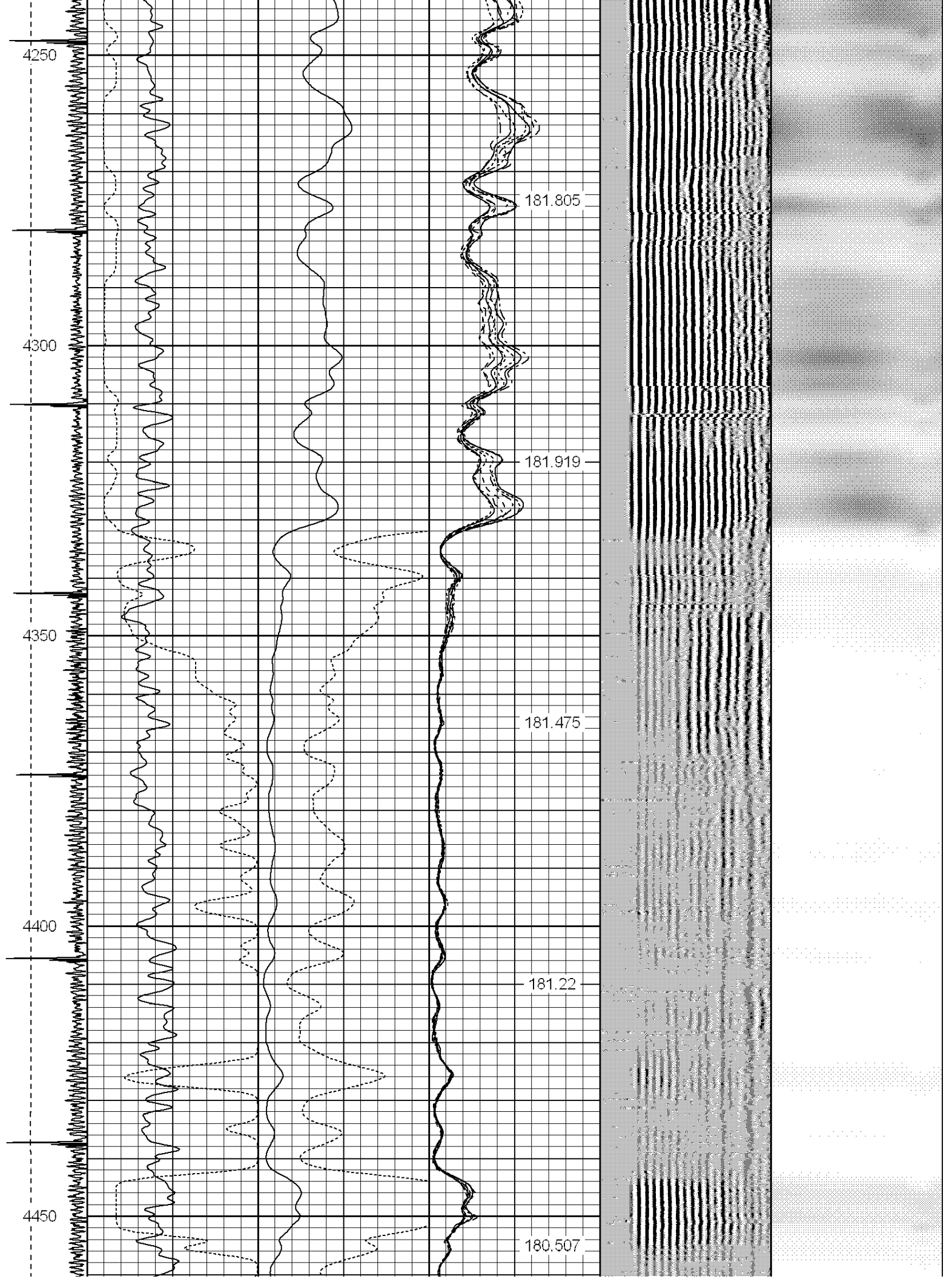
CORRELATED TO WELEX COMPENSATED DENSITY LOG
THANK YOU FOR USING WARRIOR ENERGY SERVICES!!!

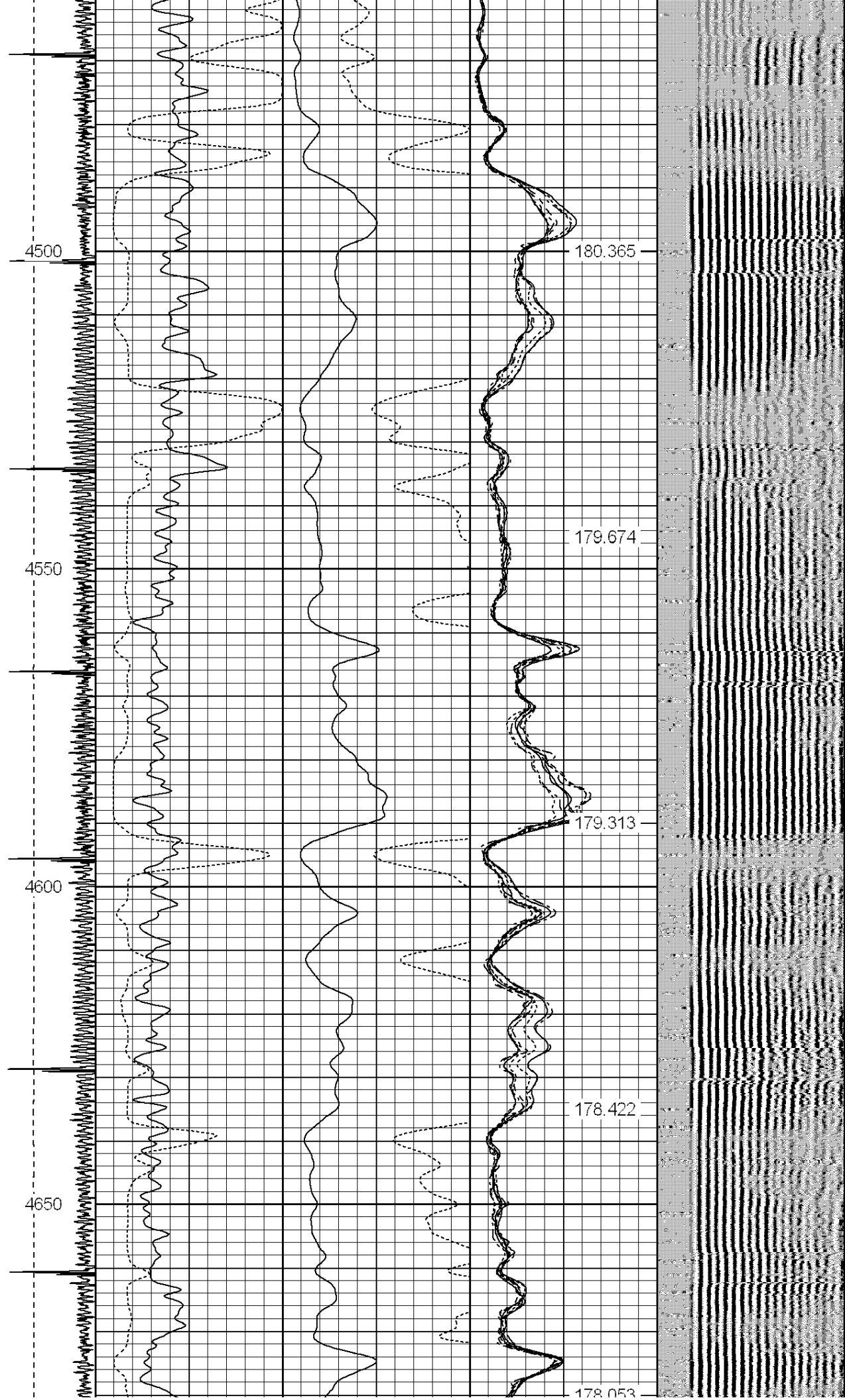
Sensor	Offset (ft)	Schematic	Description	Len (ft)	OD (in)	Wt (lb)

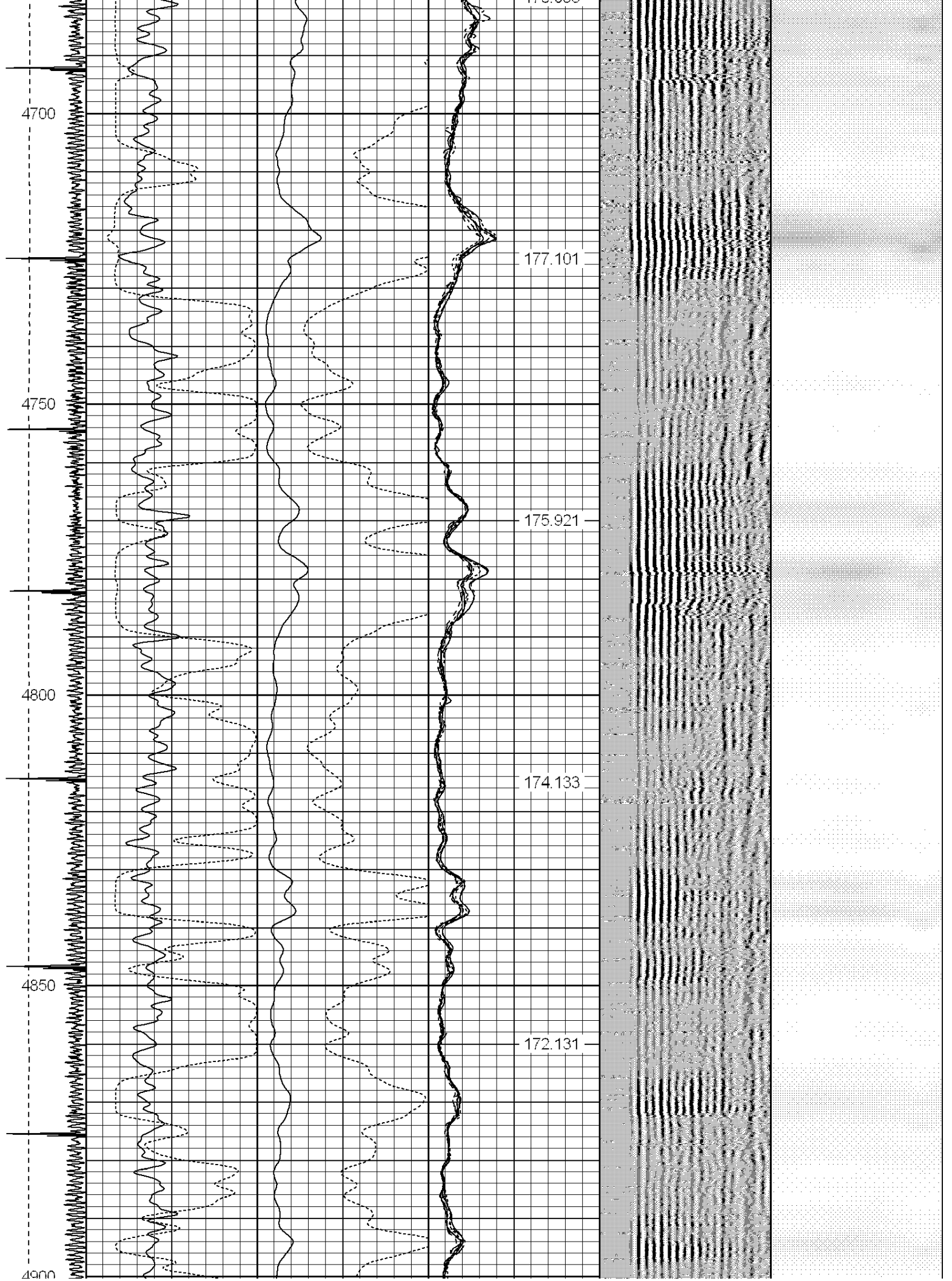
[illegible]

-9	CCL	1	200	TT (usec)	800	0	AMP (mV)	100	0	AMPS1	100	200	VDL	1200	1	Cement Map	8
LSPD			0	GR (GAPI)	200	0	AMPx5 (mV)	20	0	AMPS2	100				1		100
(ft/min)			200	GR (GAPI)	400				0	AMPS4	100						
0		250							0	AMPS5	100						
									0	AMPS6	100						
									0	AMPS7	100						
									0	AMPS8	100						
										IntTemp							
										(degF)							

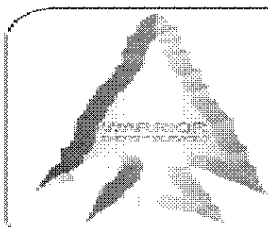
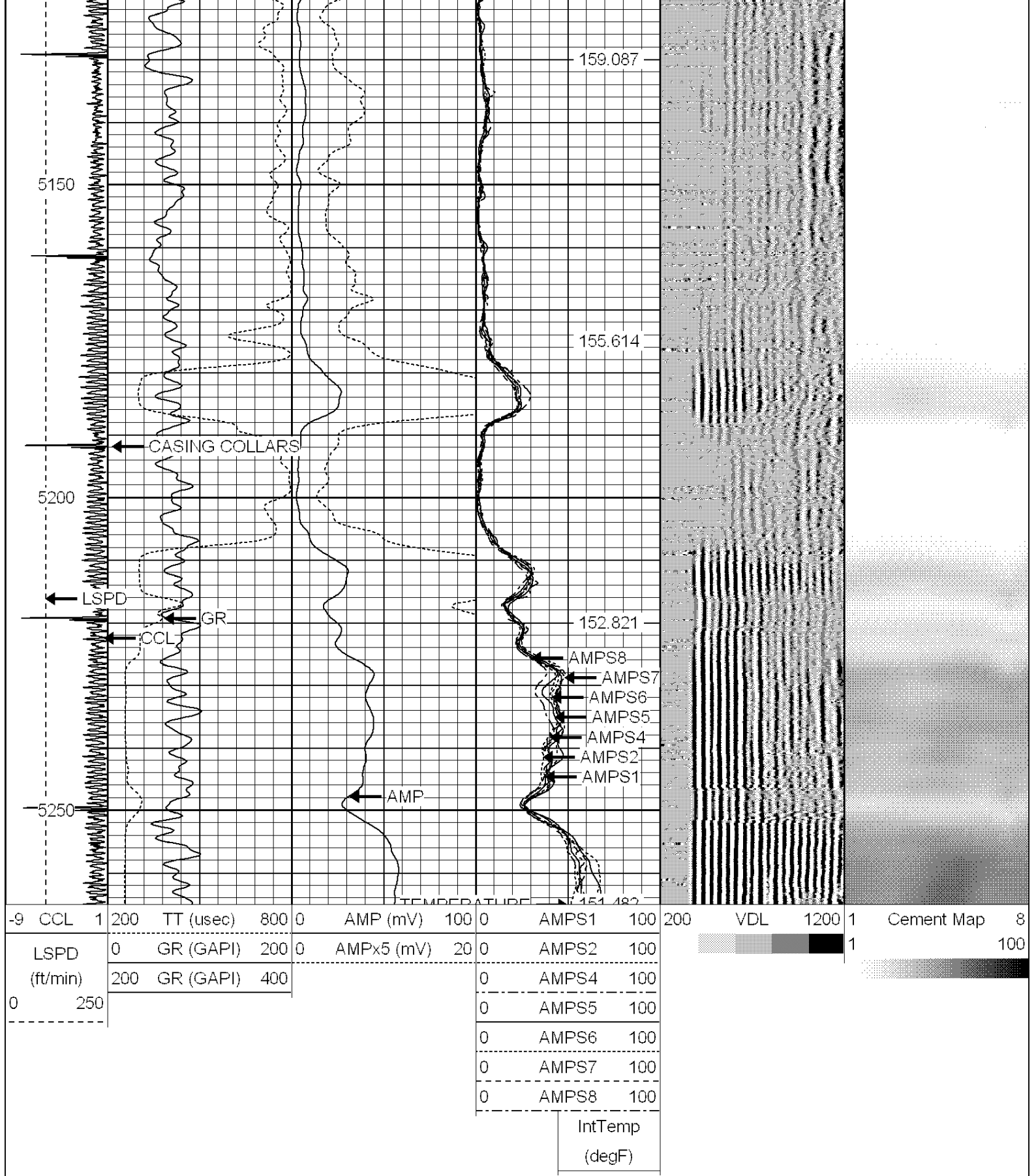












WARRIOR
ENERGY SERVICES

Company KERR MCGEE OIL AND GAS ONSHORE

Well UPRR 42 PAN AM AO 1

Field WATTENBERG

County WELD

State COLORADO

<u>WASH STATE</u>	<u>Slide</u>