



RADIAL CEMENT BOND LOG
GAMMA RAY
CCL

Company KERR MCGEE OIL AND GAS ONSHORE
Well UPRR 42 PAN AM AO 1
Field WATTENBERG
County WELD
State COLORADO

Company KERR MCGEE OIL AND GAS ONSHORE
Well UPRR 42 PAN AM AO 1
Field WATTENBERG
County WELD State COLORADO

Location: API # : 05-123-09344
SHL: 990' FNL 1.160' FEL
NE/NE
Permanent Datum SEC 35 TWP 2N RGE 67W
Log Measured From KB 10'
Drilling Measured From K.B
Elevation 4940'
Other Services
K.B. 4950
D.F. 4949
G.L. 4940

Date	8/4/14
Run Number	ONE
Depth Driller	8150'
Depth Logger	7918'
Bottom Logged Interval	7918'
Top Log Interval	SURFACE
Open Hole Size	7.88
Type Fluid	WATER
Density / Viscosity	1.0
Max. Recorded Temp.	219 DEG F
Estimated Cement Top	7030'
Time Well Ready	NA
Time Logger on Bottom	NA
Equipment Number	4740
Location	GREELEY, CO
Recorded By	C. SHARP
Witnessed By	L. WEBB

Borehole Record				Tubing Record			
Run Number	Bit	From	To	Size	Weight	From	To
ONE							
TWO							
THREE							

Casing Record	Size	Wgt/Ft	Top	Bottom
Surface String	8.63	24#	10	216
Prot. String				
Production String	4.5	10.5#	10	8149
Liner				

<<< Fold Here >>>

All interpretations are opinions based on inferences from electrical or other measurements and we cannot and do not guarantee the accuracy or correctness of any interpretation, and we shall not, except in the case of gross or willful negligence on our part, be liable or responsible for any loss, costs, damages, or expenses incurred or sustained by anyone resulting from any interpretation made by any of our officers, agents or employees. These interpretations are also subject to our general terms and conditions set out in our current Price Schedule.

Comments

CORRELATED TO WELEX COMPENSATED DENSITY LOG

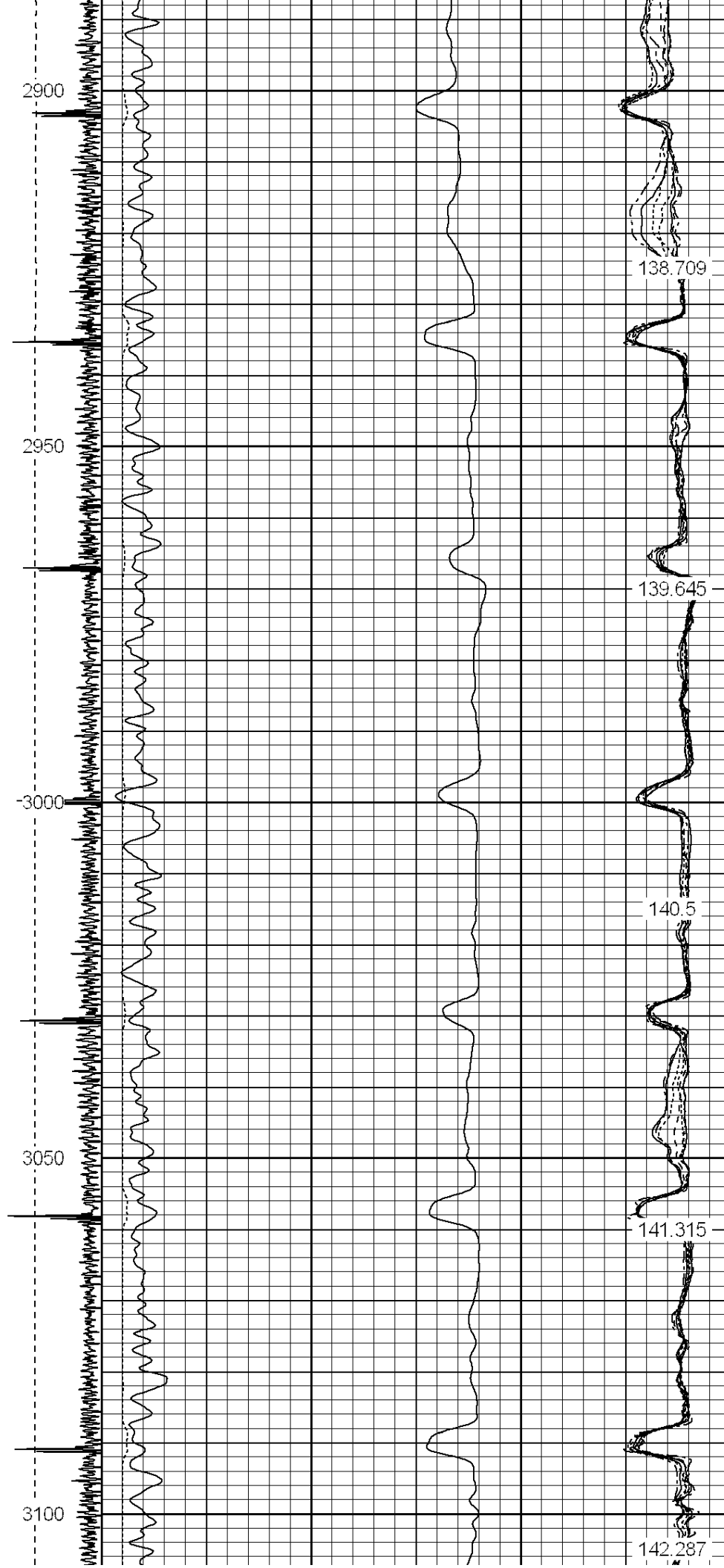
THANK YOU FOR USING WARRIOR ENERGY SERVICES!!!

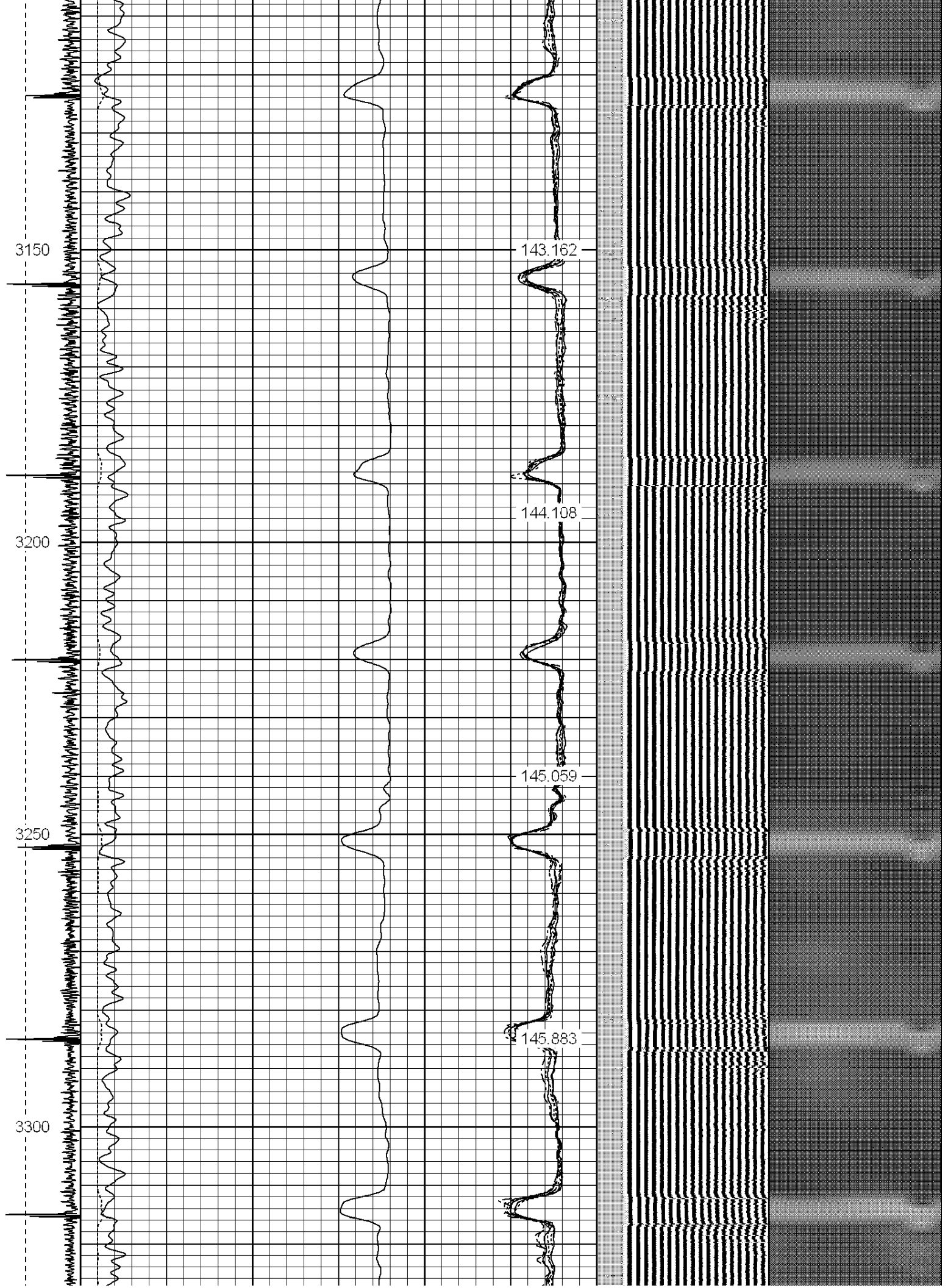
Sensor	Offset (ft)	Schematic	Description	Len (ft)	OD (in)	Wt (lb)

Tool Joint	Tool Joint Depth (ft)	Tool Joint Diagram	Tool Joint Description	Tool Joint Length (ft)	Tool Joint Weight (lb)	Tool Joint O.D. (in)
HEADVOLT	16.25					
IntTemp	14.83					
WVFS3FT	11.58					
WVFCAL	11.58					
WVFS1	11.58					
WVFS2	11.58					
WVFS3	11.58					
WVFS4	11.58					
WVFS5	11.58					
WVFS6	11.58					
WVFS7	11.58					
WVFS8	11.58					
WVFS5FT	10.58					
CNLSC	6.00					
CNSSC	5.17					
CCL	3.64					
GR	0.90					
Dataset: uprr pan am a0 1.db: field/well/run1/pass4 Total Length: 19.08 ft Total Weight: 160.00 lb O.D.: 2.75 in						

-9	CCL	1	200	TT (usec)	800	0	AMP (mV)	100	0	AMPS1	100	200	VDL	1200	1	Cement Map	8
LSPD			0	GR (GAPI)	200	0	AMPx5 (mV)	20	0	AMPS2	100				1		100
(ft/min)			200	GR (GAPI)	400				0	AMPS4	100						
0		250							0	AMPS5	100						
									0	AMPS6	100						
									0	AMPS7	100						
									0	AMPS8	100						
										IntTemp							
										(degF)							

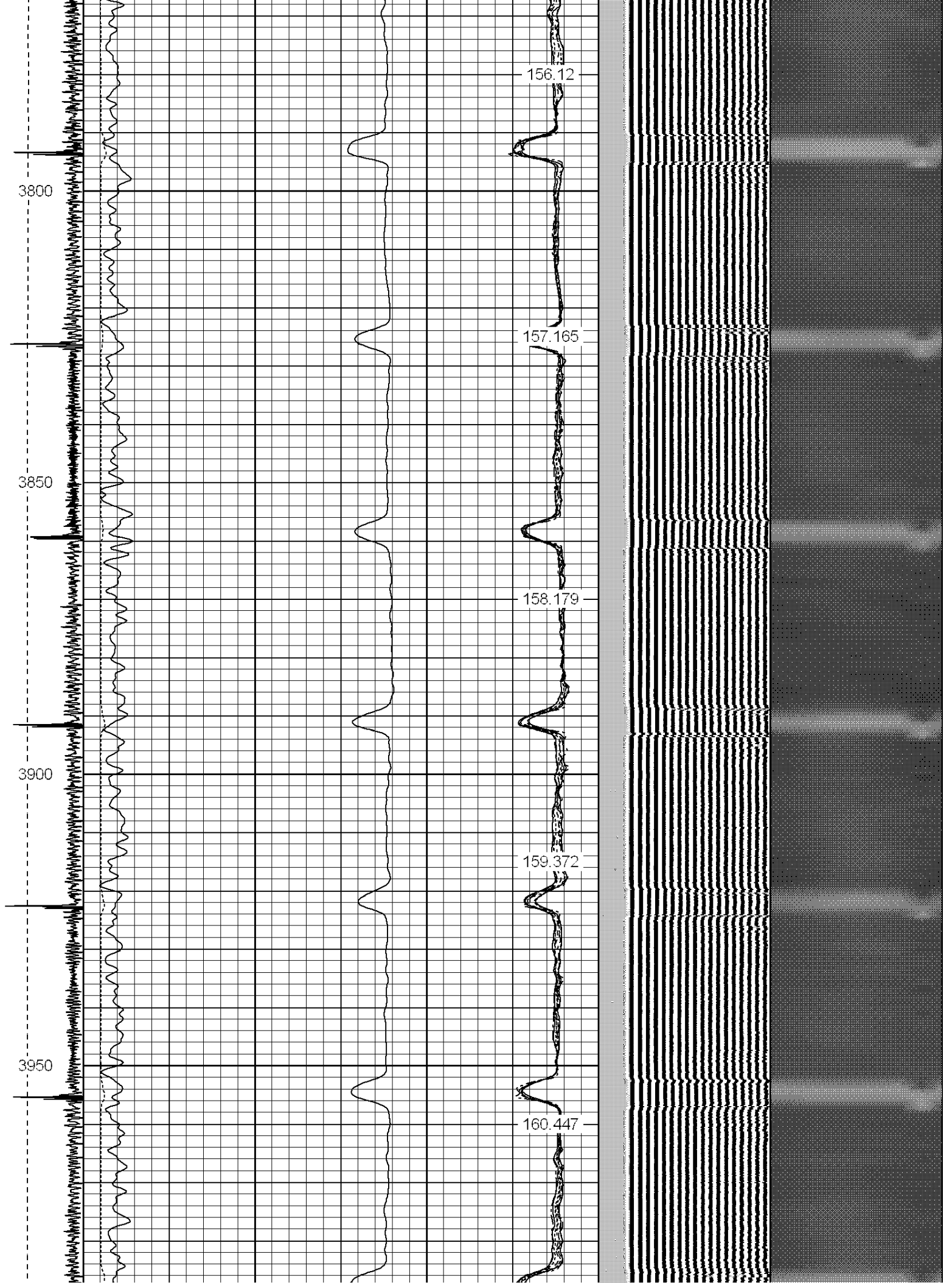


















4650

4700

4750

4800

4850

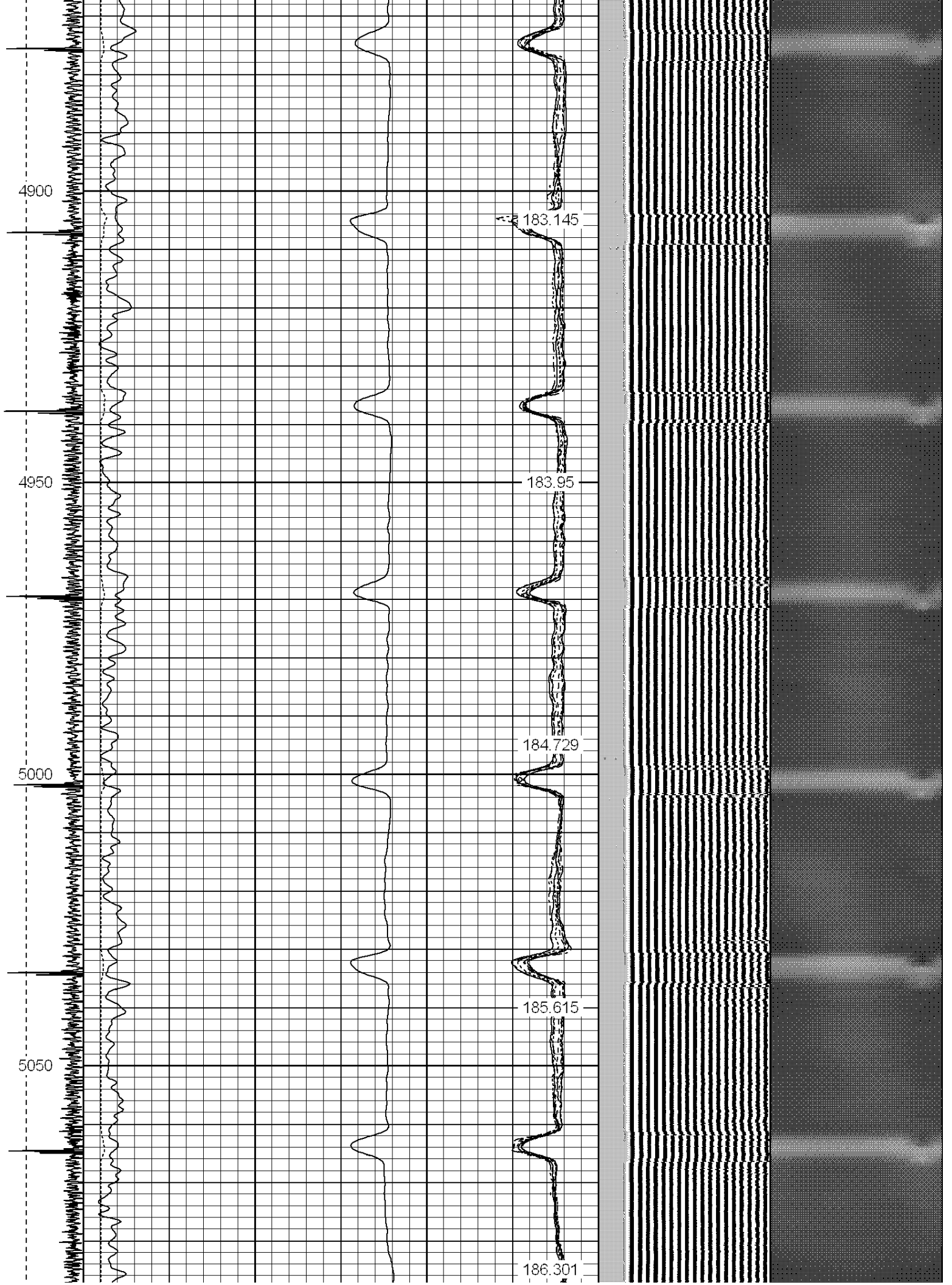
178.884

179.881

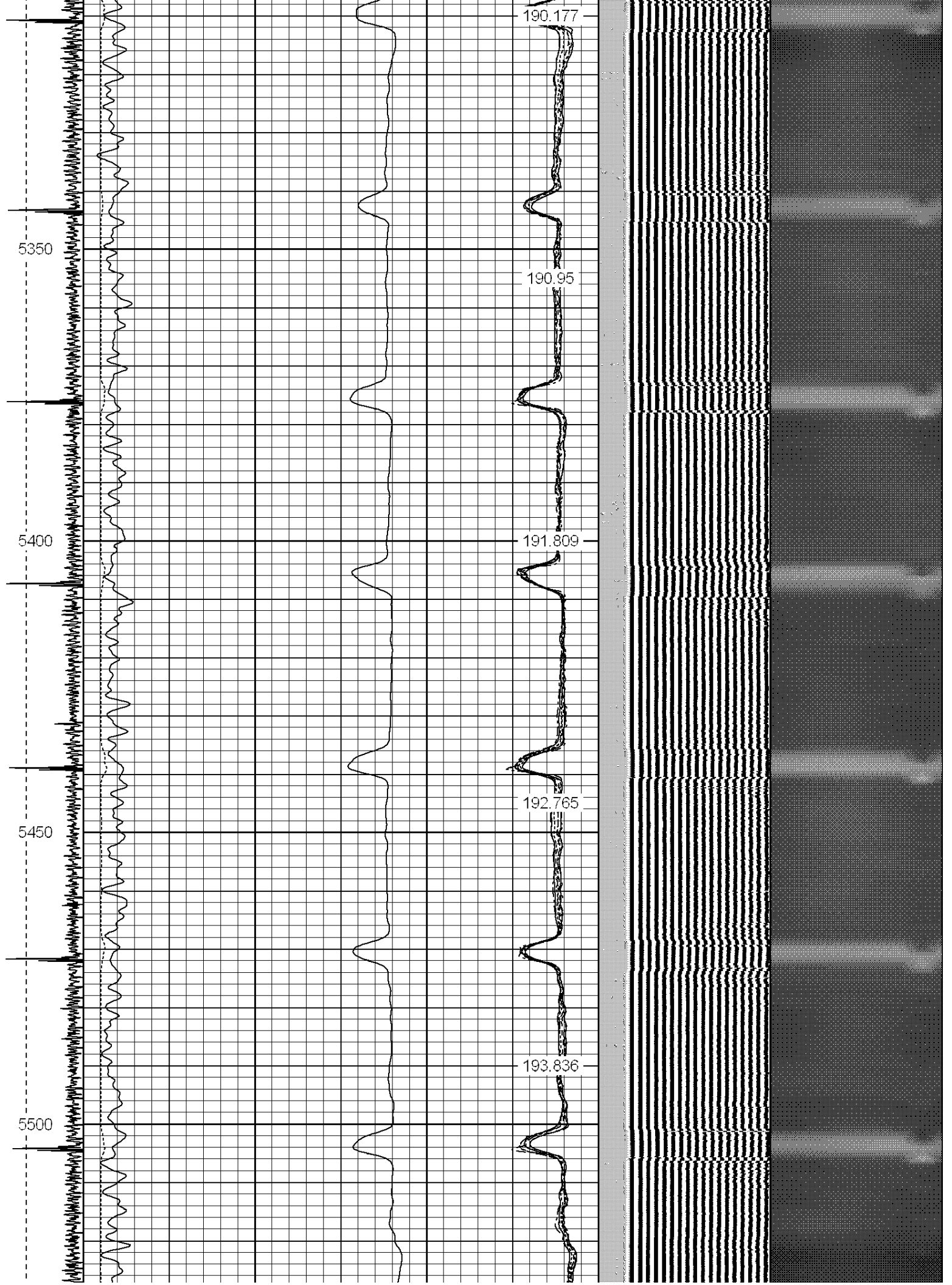
180.735

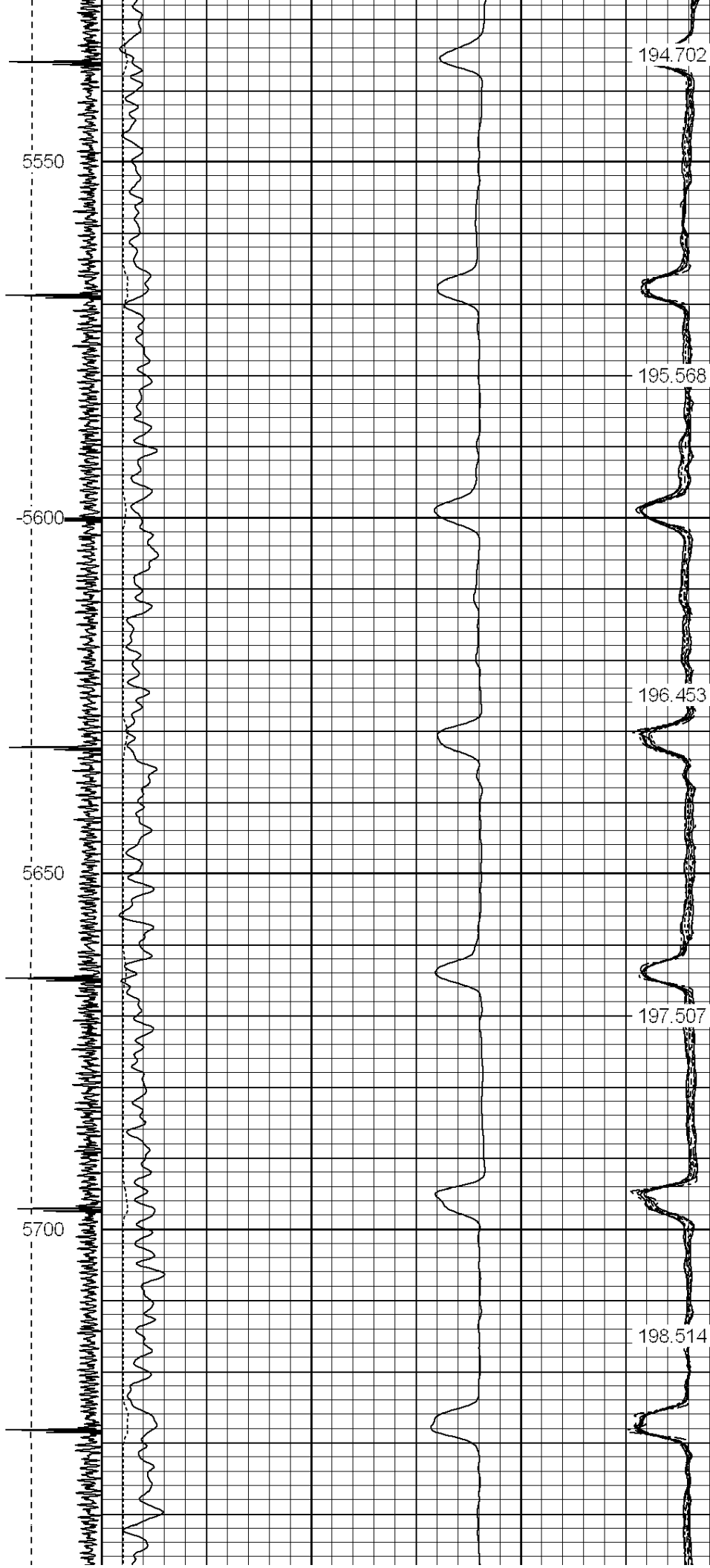
181.537

182.314

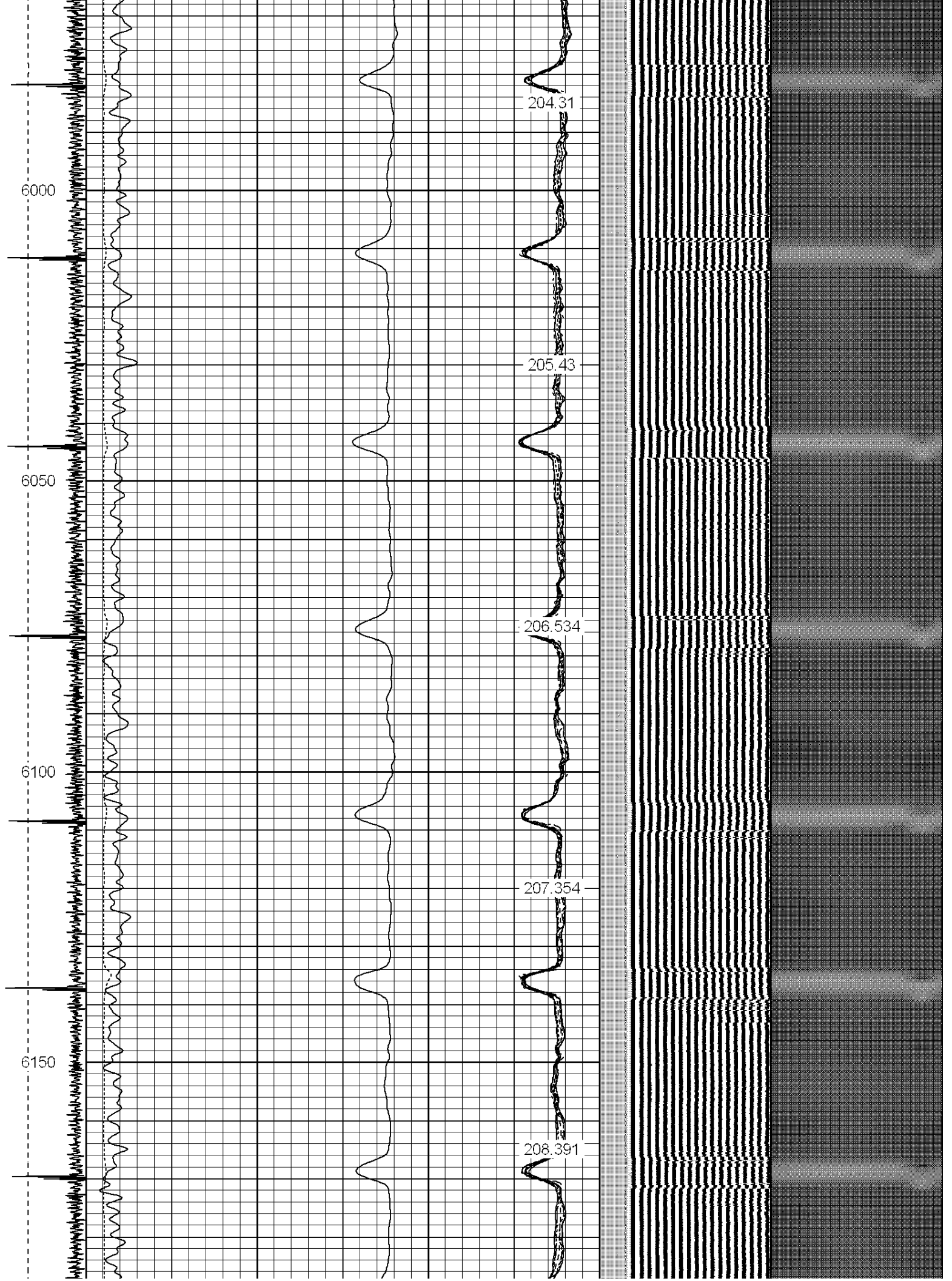


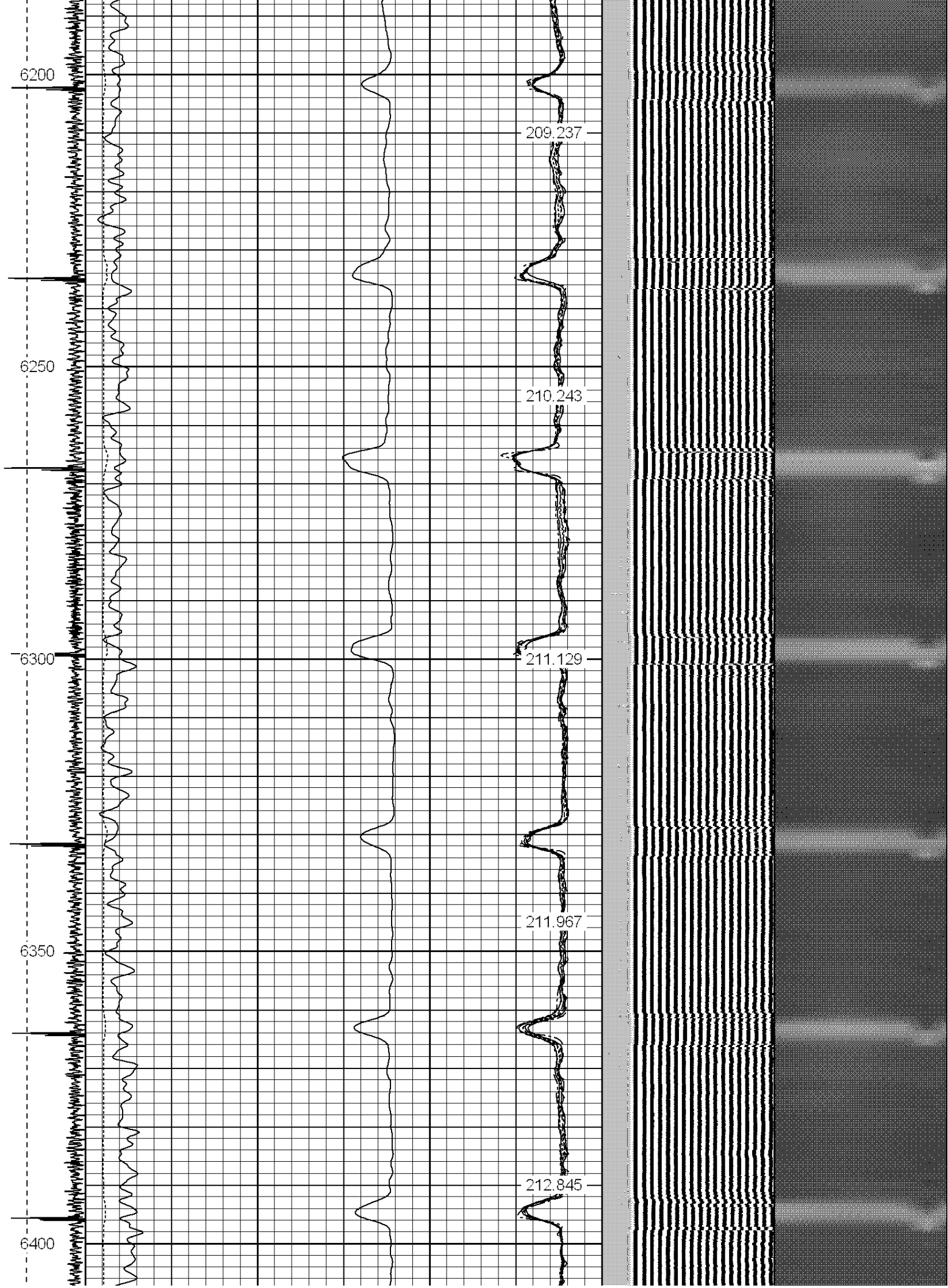




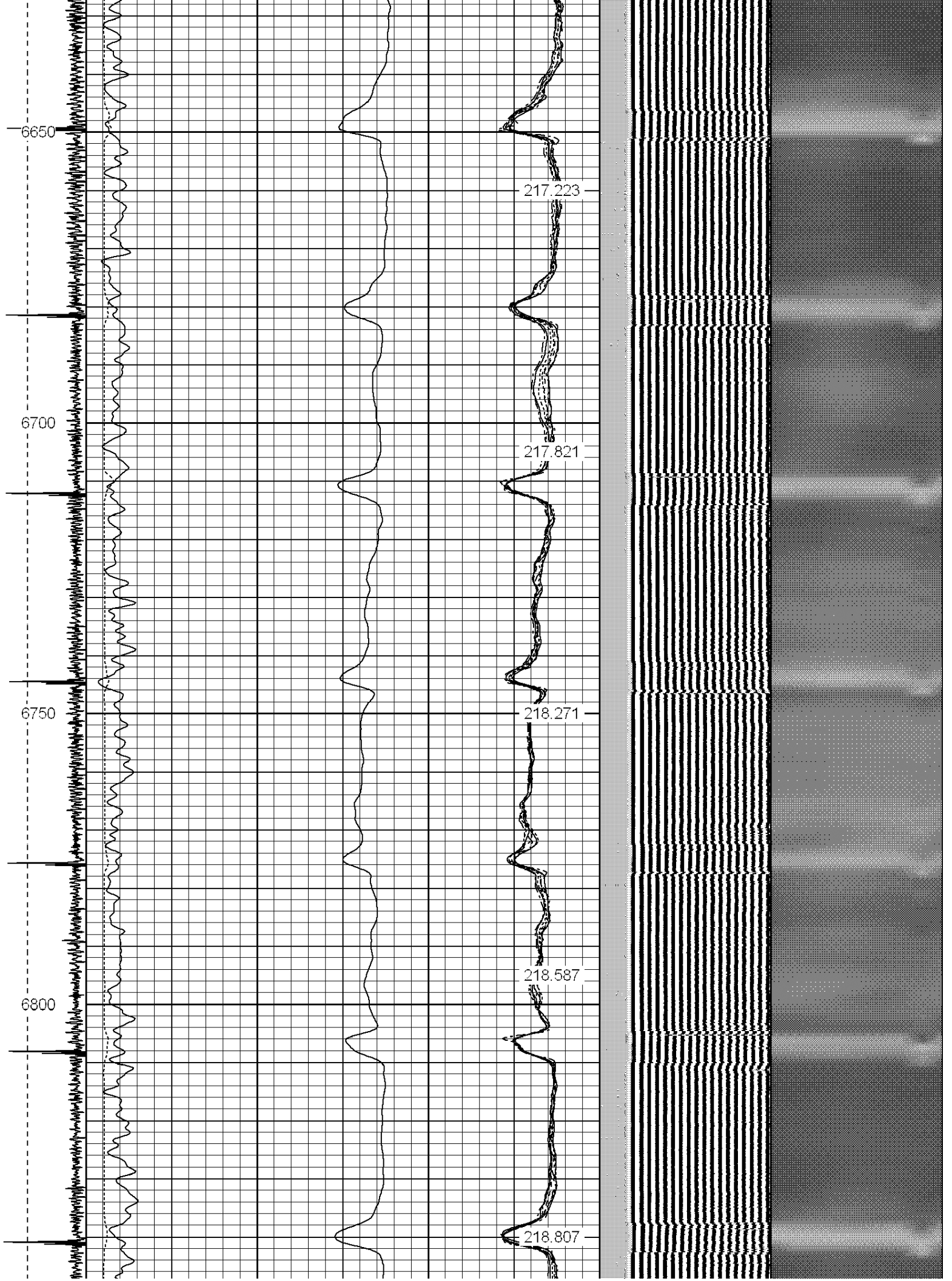


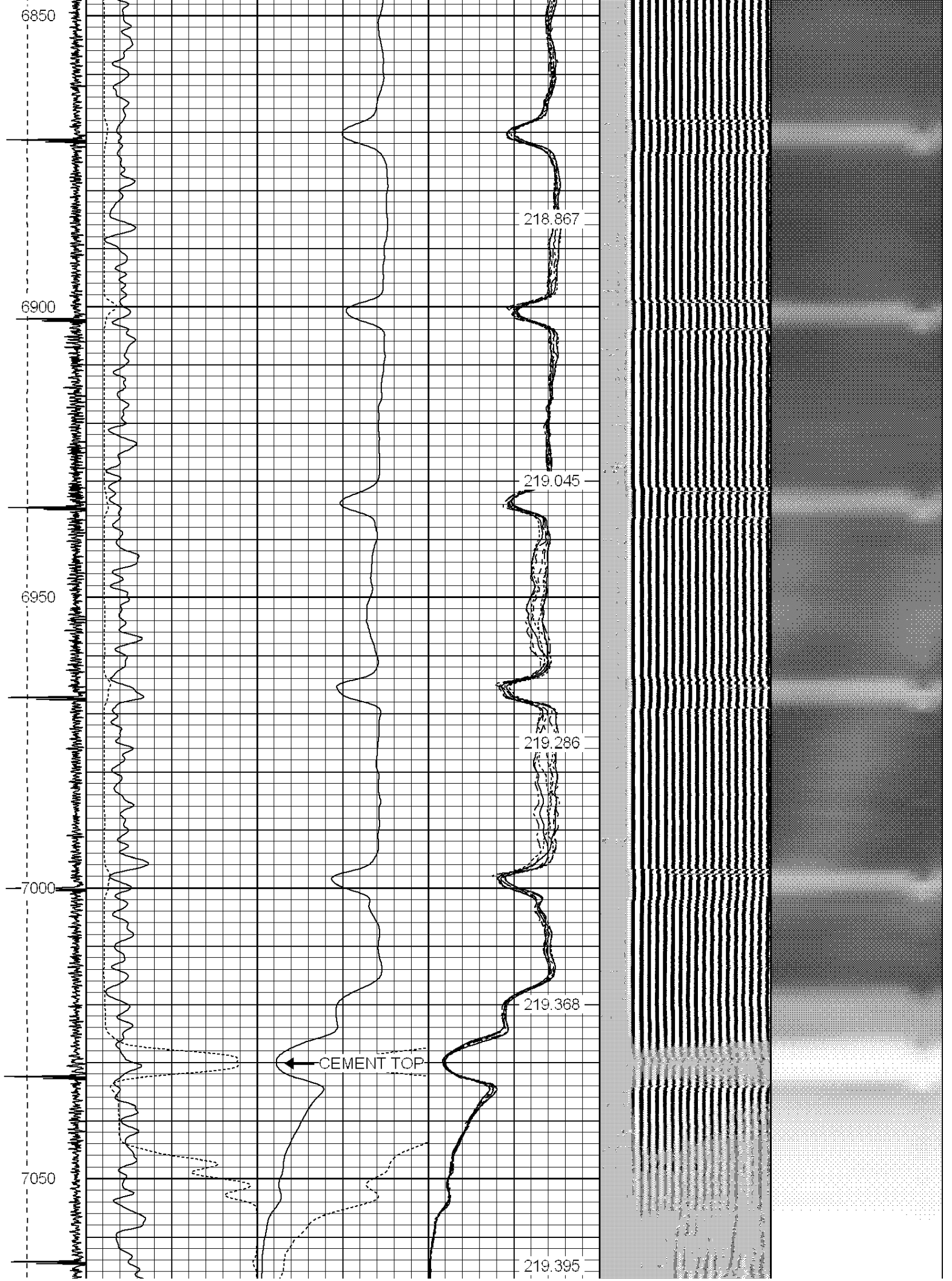


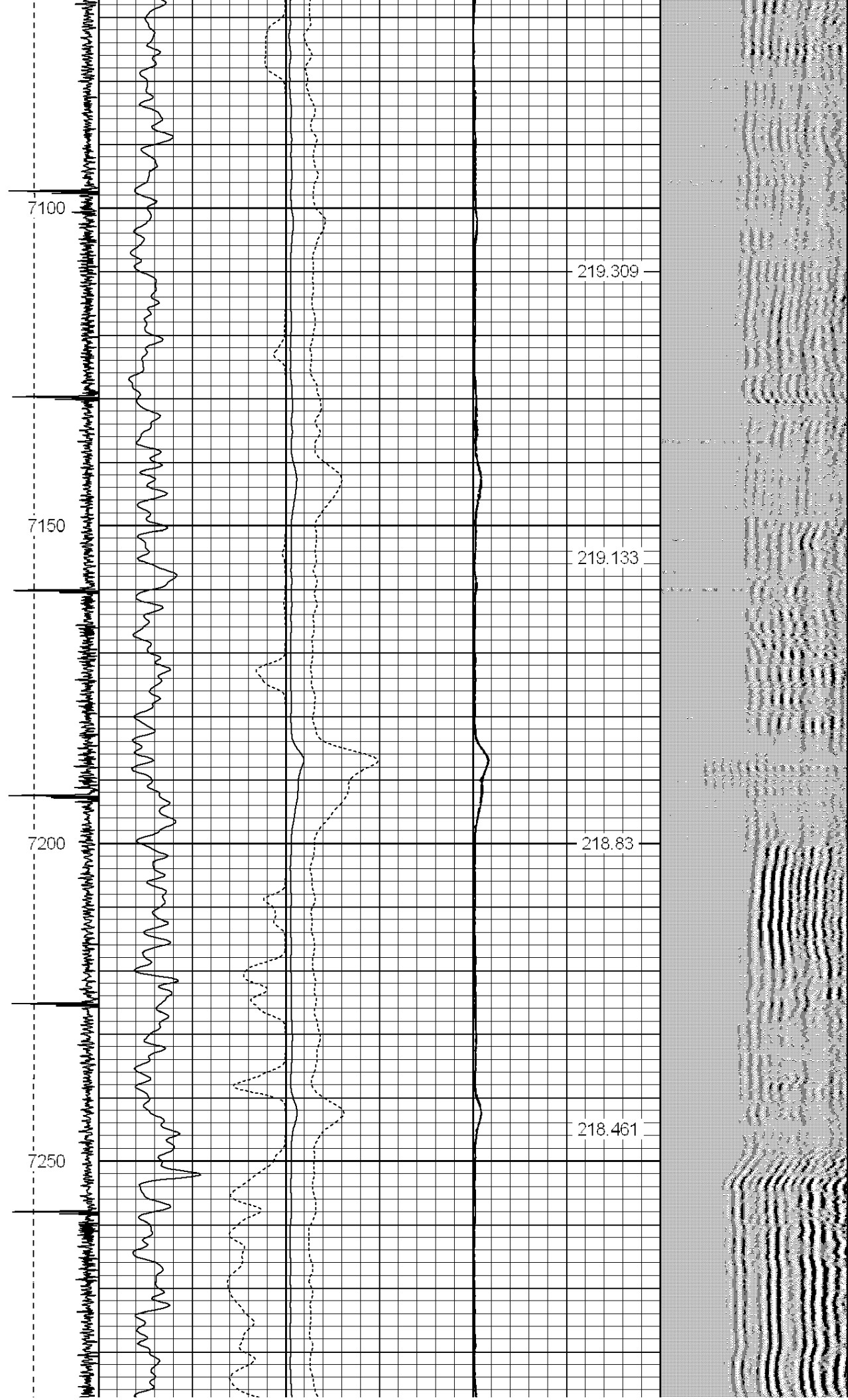


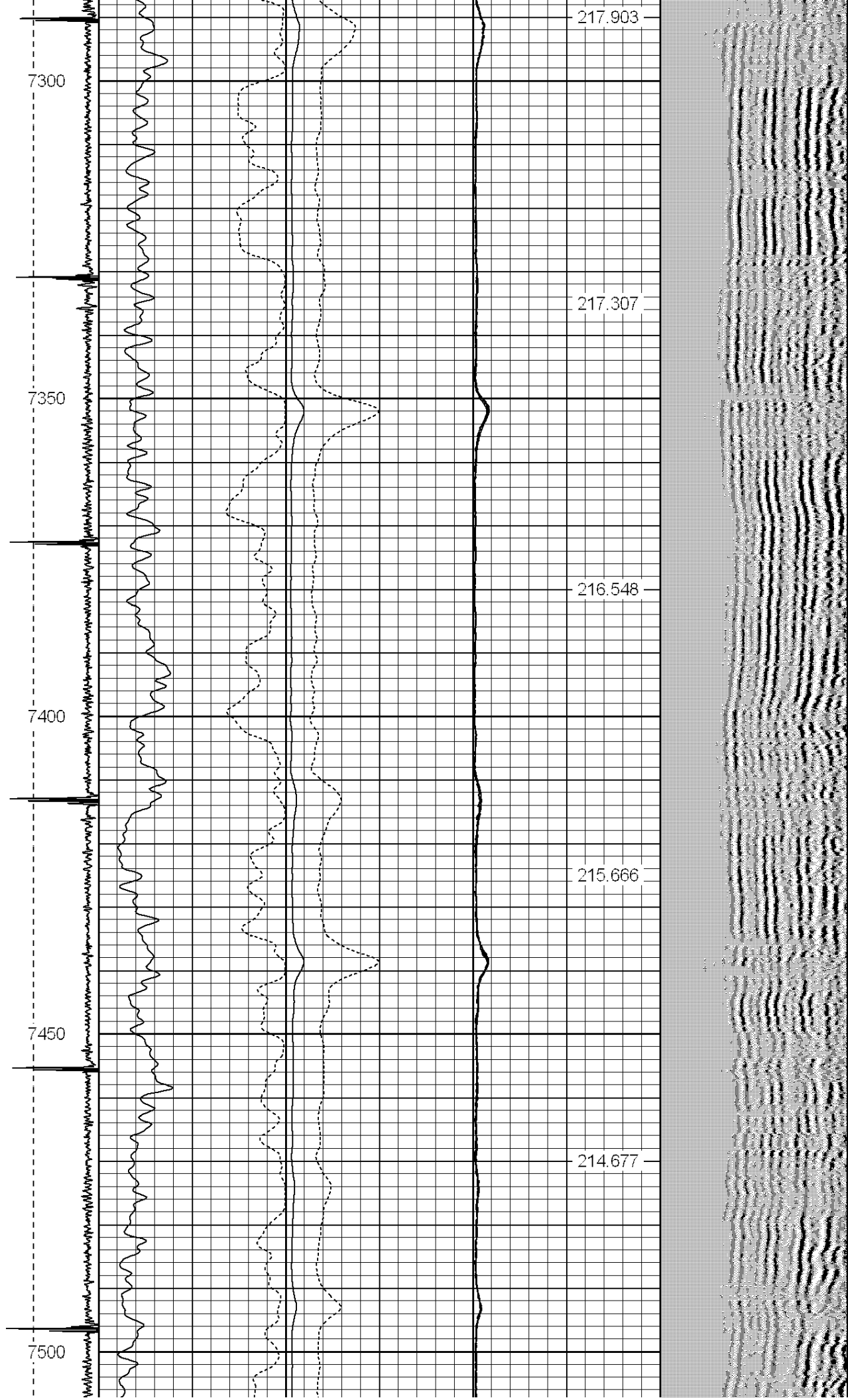


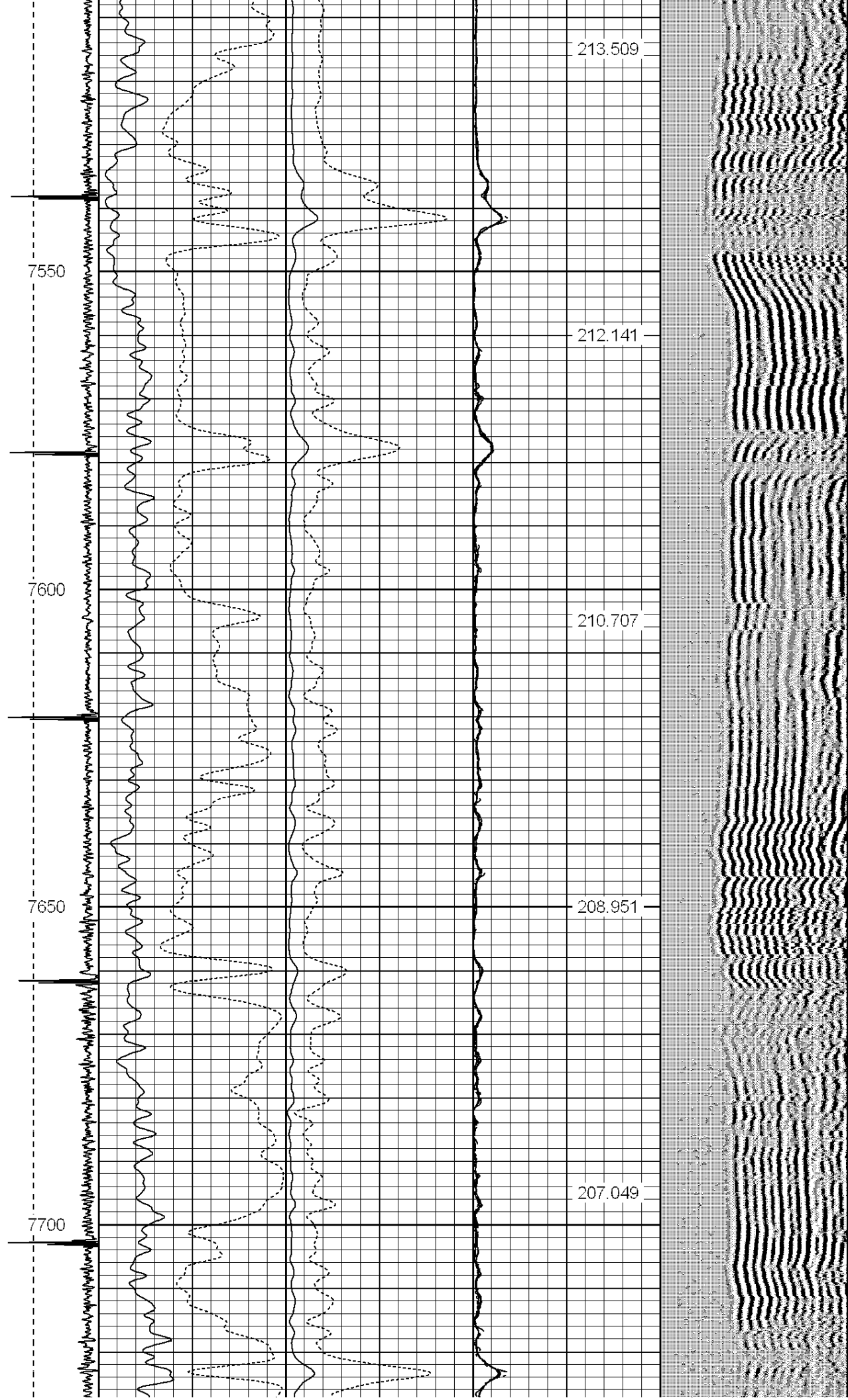


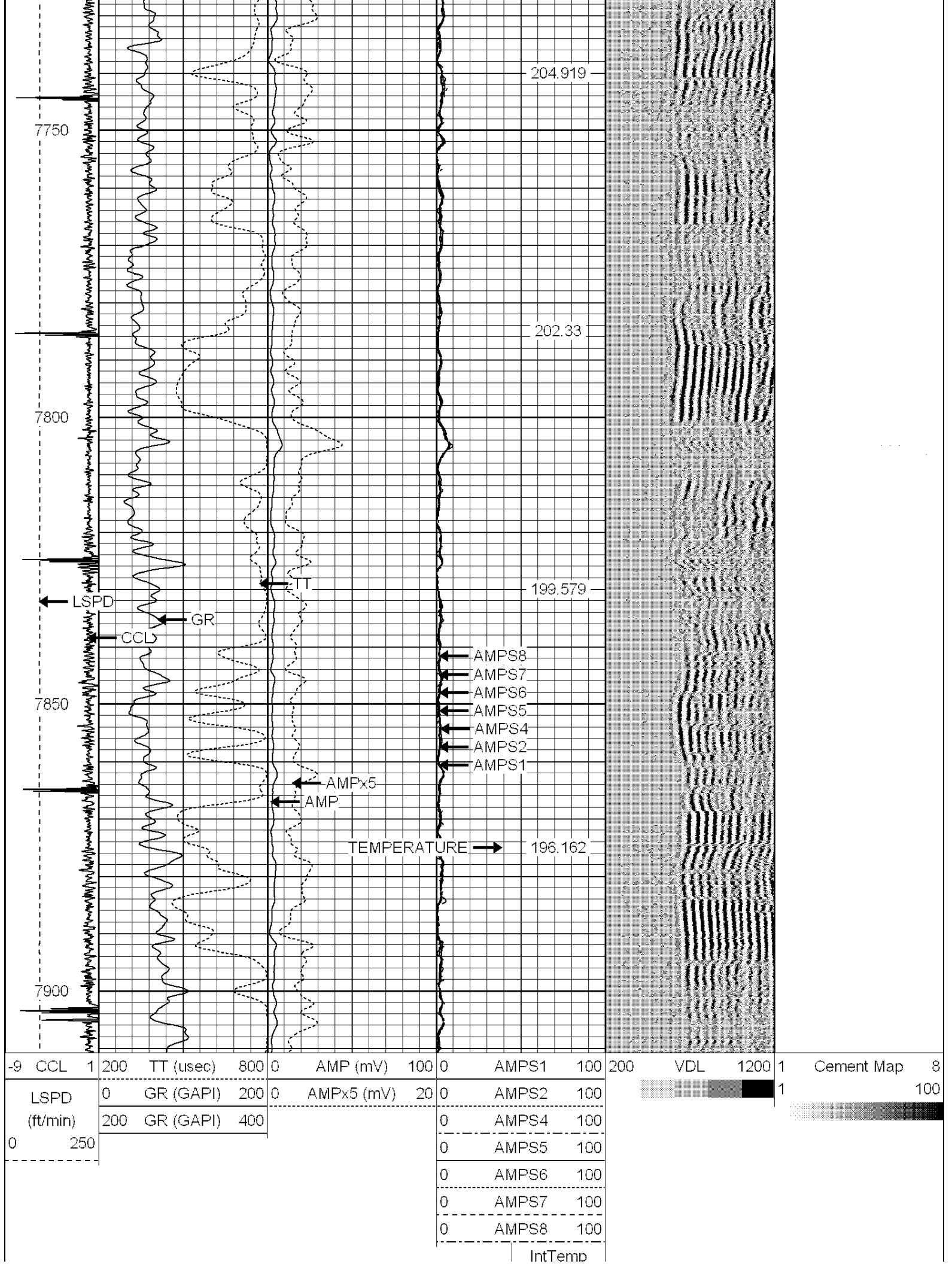














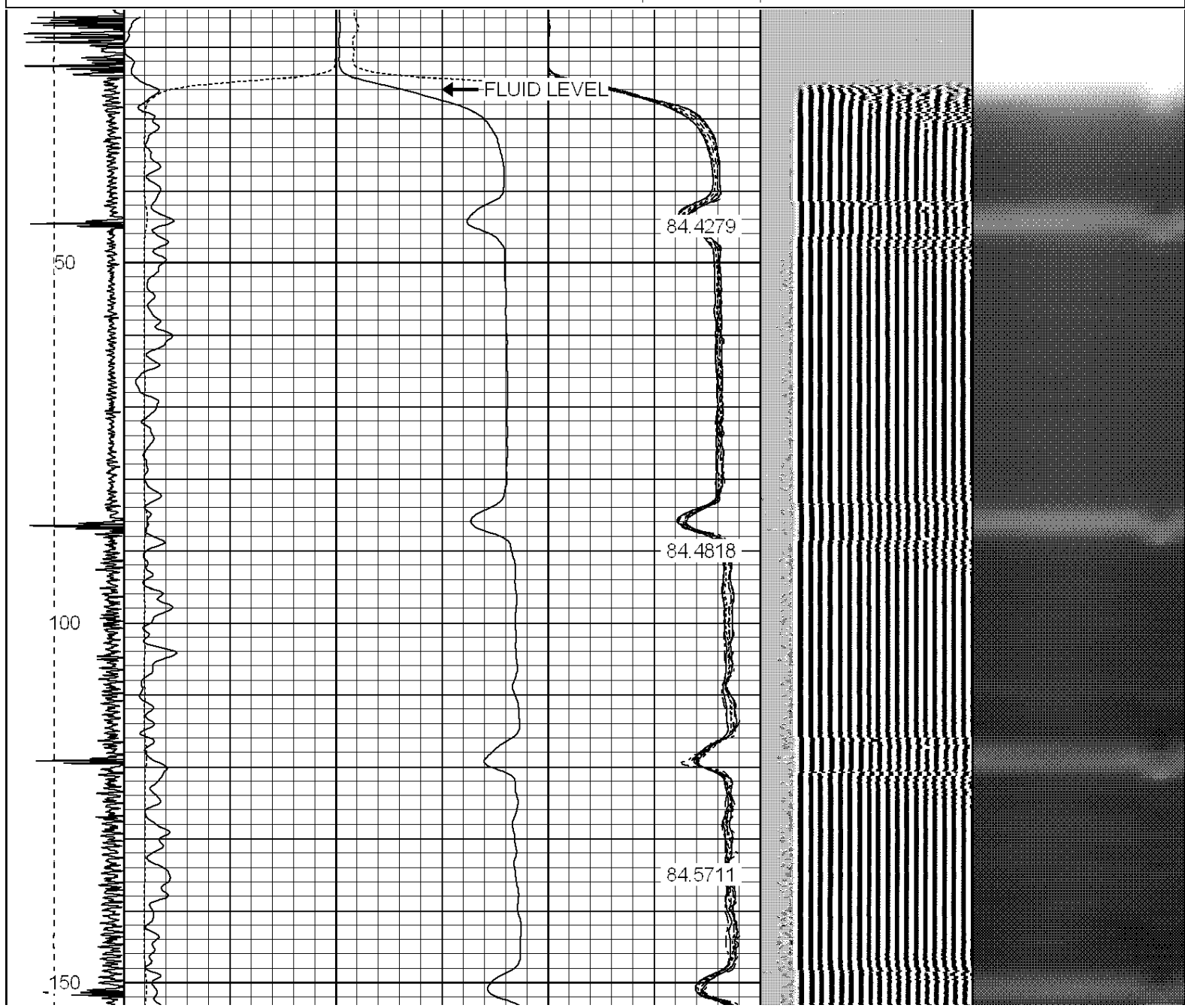
(degF)

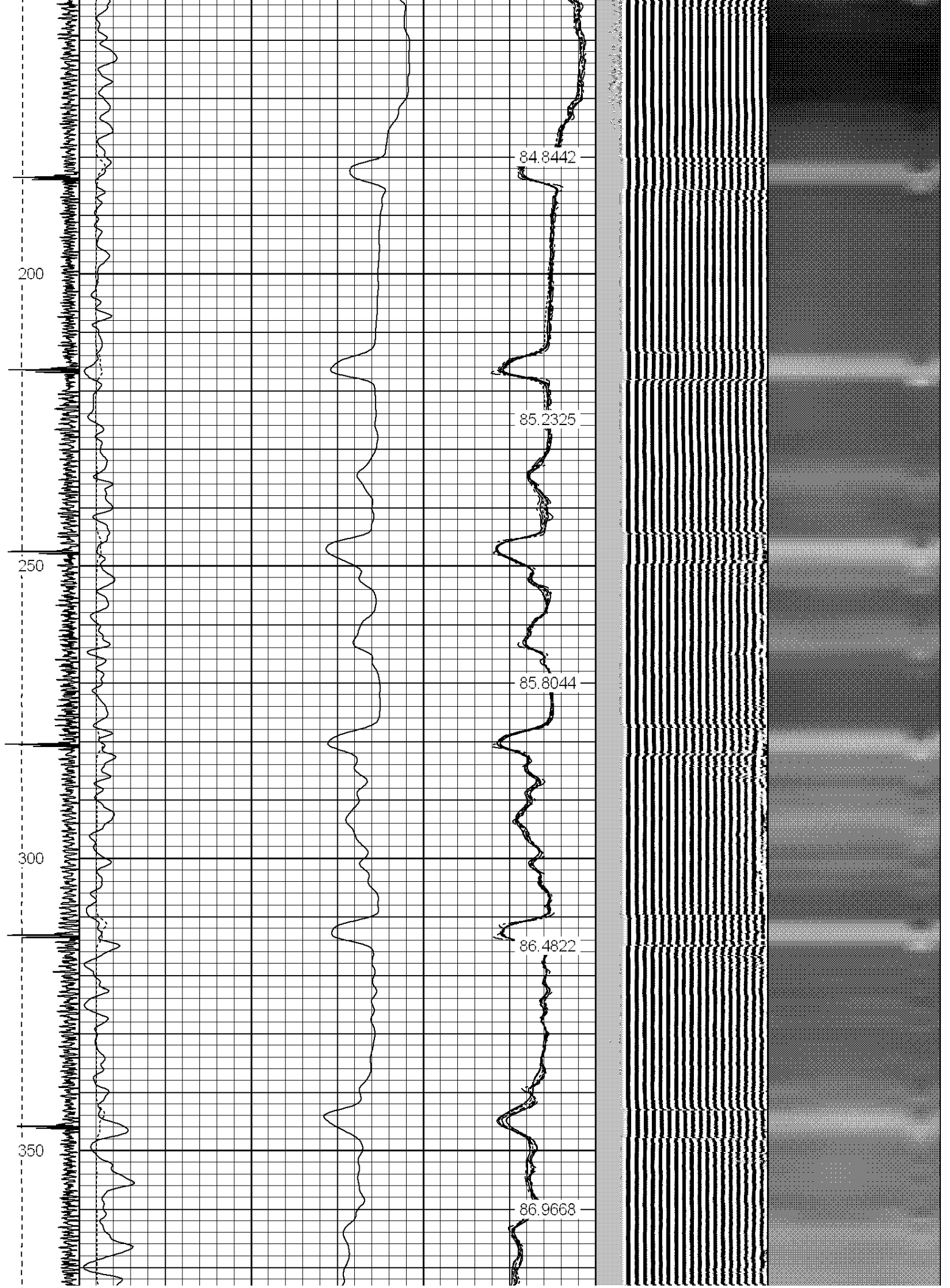
Sensor	Offset (ft)	Schematic	Description	Len (ft)	OD (in)	Wt (lb)
HEADVOLT	16.25		PTS275	2.83	2.75	90.00
IntTemp	14.83					
WVF3FT	11.58		RBT-Probe (Base) Probe Radii Bond Tool with Digital Telemetry	8.92	2.75	
WVFCAL	11.58					
WVFS1	11.58					
WVFS2	11.58					
WVFS3	11.58					
WVFS4	11.58					
WVFS5	11.58					
WVFS6	11.58					
WVFS7	11.58					
WVFS8	11.58					
WVF5FT	10.58					
CNLSC	6.00		CNT-Probe_B (275) 6 bow centralizer	3.00	2.75	
CNSSC	5.17					
CCL	3.64					
GR	0.90		GR-Probe (275) Probe 2.75"	4.33	2.75	

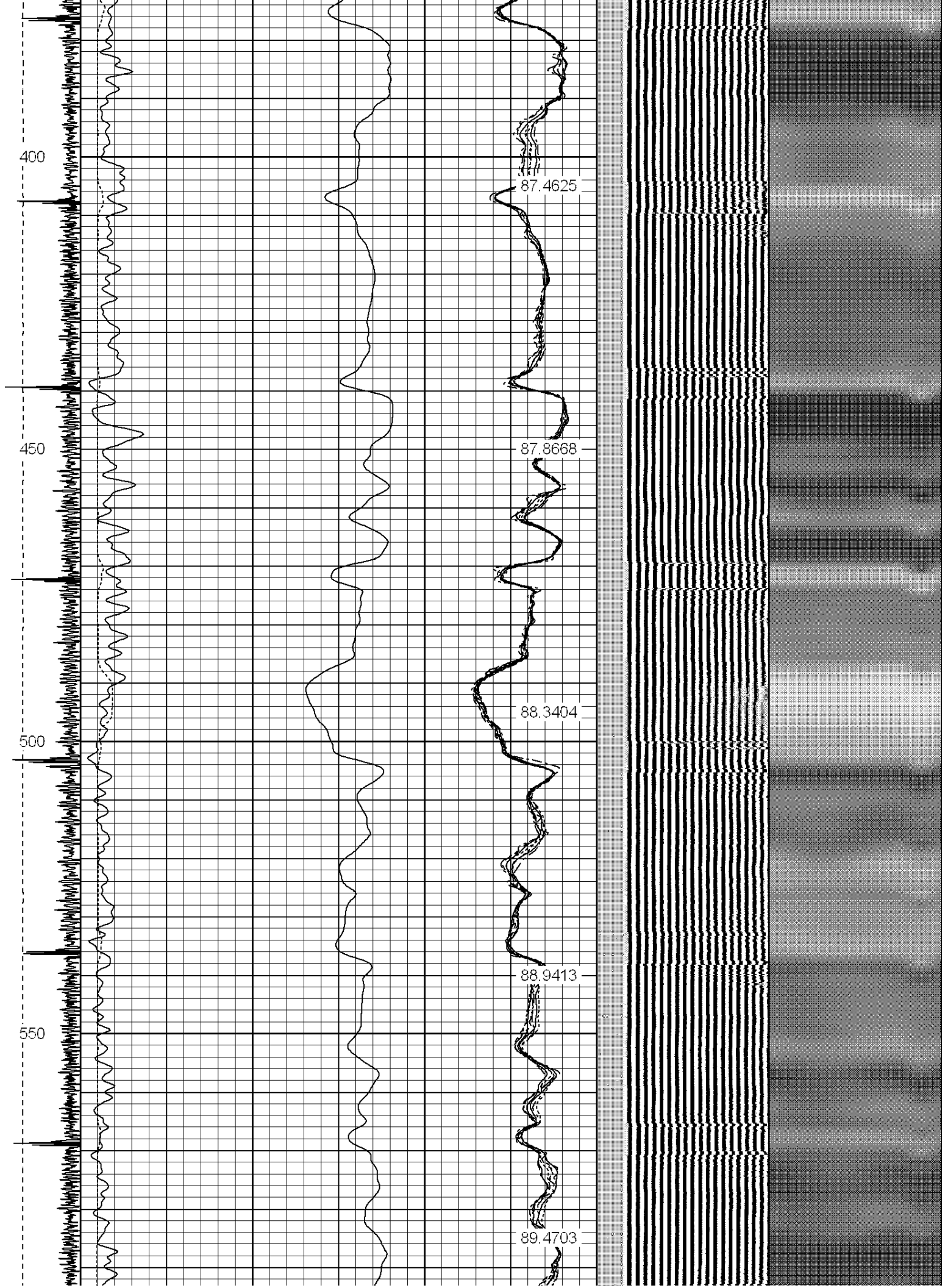
Dataset: uprr pan am a0 1.db; field/run 1/pass8
Total Length: 19.08 ft
Total Weight: 160.00 lb
O.D.: 2.75 in

Database File: uprr pan am a0 1.db
Dataset Pathname: pass8
Presentation Format: ips_rbt
Dataset Creation: Mon Aug 04 18:06:12 2014 by Log SCH 120126
Charted by: Depth in Feet scaled 1:240

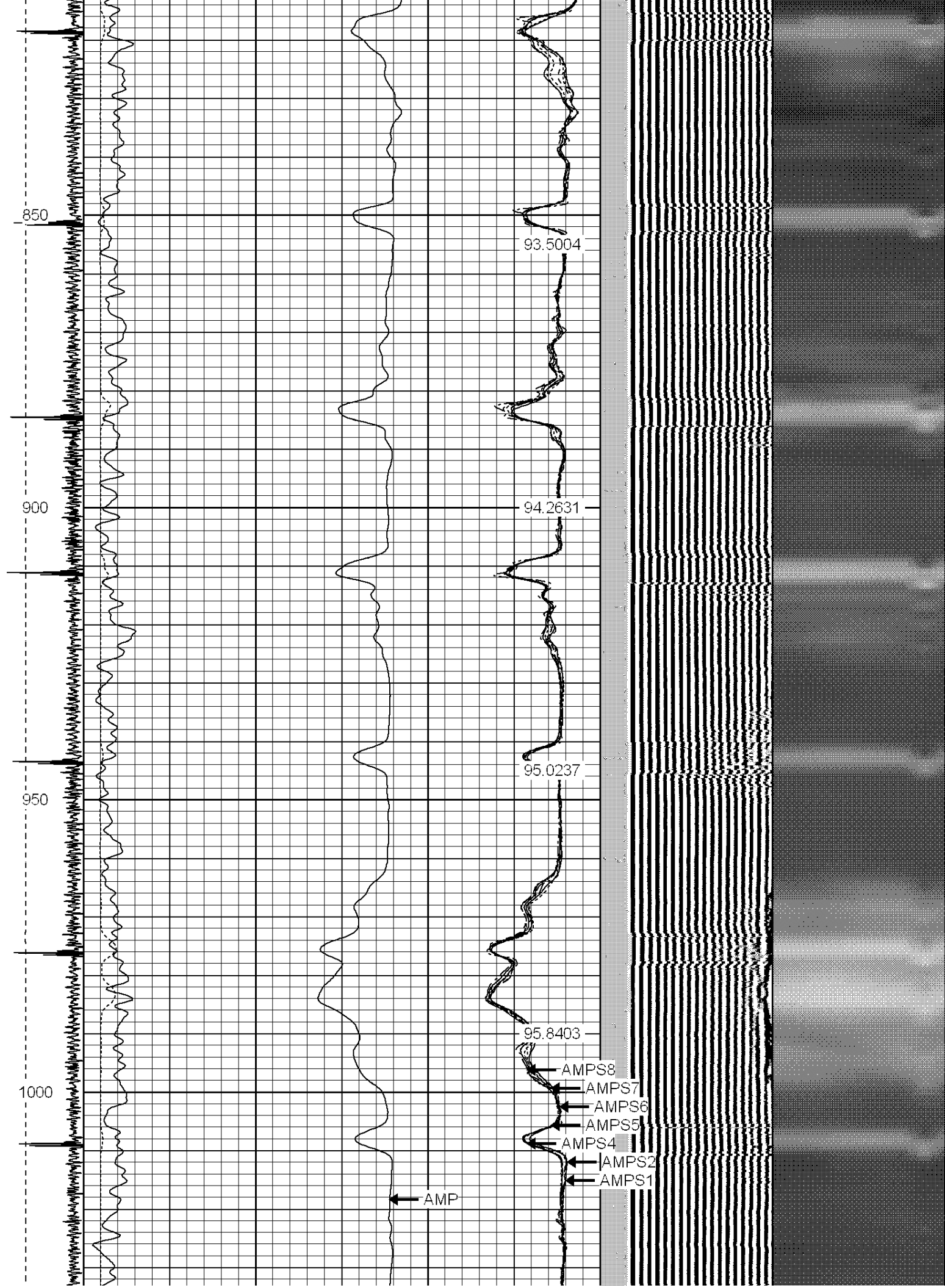
-9	CCL	1	200	TT (usec)	800	0	AMP (mV)	100	0	AMPS1	100	200	VDL	1200	1	Cement Map	8	
LSPD (ft/min)			0	GR (GAPI)	200	0	AMPx5 (mV)	20	0	AMPS2	100				1			100
			200	GR (GAPI)	400	0	AMPS4	100										
0	250								0	AMPS5	100							
-----									0	AMPS6	100							
									0	AMPS7	100							
									0	AMPS8	100							
											IntTemp							
											(degF)							

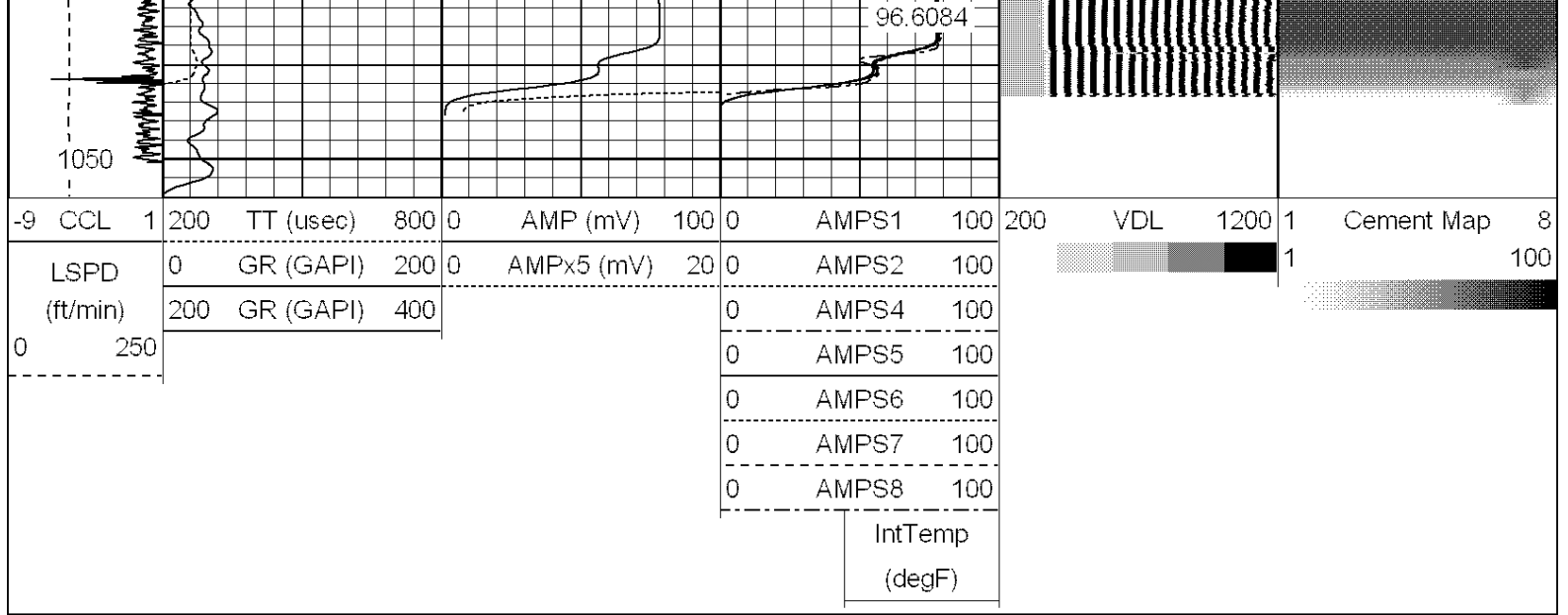














WARRIOR
ENERGY SERVICES

CompanyKERR MCGEE OIL AND GAS ONSHORE

WellUPRR 42 PAN AM AO 1

FieldWATTENBERG

CountyWELD

StateCOLORADO