

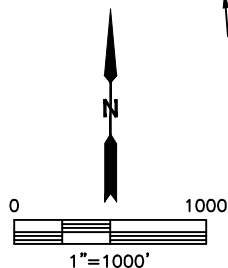
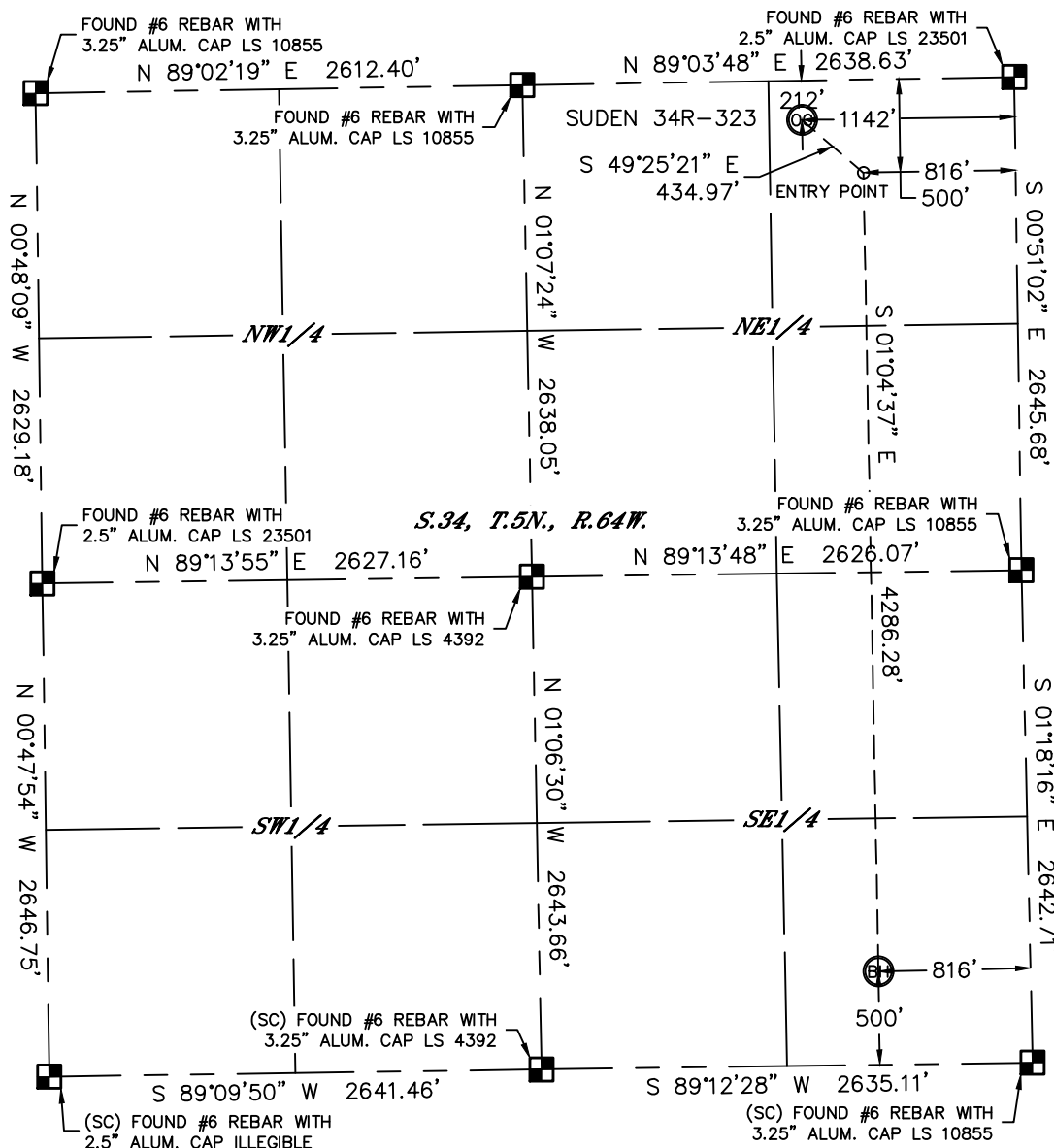


Lat40°, Inc. 1635 Foxtrail Drive, Suite 325 Loveland, CO 970-776-3321

WELL LOCATION CERTIFICATE

THIS MAP DOES NOT REPRESENT A BOUNDARY SURVEY

SECTION: 34
TOWNSHIP: 5N
RANGE: 64W



In accordance with a request from Jake Bragg with PDC ENERGY Lat40°, Inc. has determined the surface location of the SUDEN 34R-323 to be 212' from the NORTH line and 1142' from the EAST line and the bottom hole to be 500' from the SOUTH line and 816' from the EAST line as measured at right angles from the section lines of Section 34, Township 5 North, Range 64 West of the Sixth Principal Meridian, County of Weld, State of Colorado.

I hereby state that this Well Location Certificate was prepared by me, or under my direct supervision, that the fieldwork was completed on 12/13/2013, for and on behalf of PDC ENERGY. That this is not a Land Survey Plat or an Improvement Survey Plat, and that it is not to be relied upon for establishment of fence, building, or other future improvement lines.

NOTE:

- 1) Bearings shown are Grid Bearings of the Colorado State Plane Coordinate System, North Zone, North American Datum 1983/2007. The lineal dimensions as contained herein are based upon the "U.S. Survey Foot."
- 2) Ground elevations are based on an observed GPS elevation (NAVD 1988 DATUM).
- 3) IMPROVEMENTS: See LOCATION DRAWING for all visible improvements within 500' of disturbed area.
- 4) SURFACE USE: RANGELAND
- 5) INSTRUMENT OPERATOR: BRIAN ROTTINGHAUS
- 6) NEAREST CULTURAL ITEMS:
BUILDING: 1060' SW
BUILDING UNIT: 1156' SW
HIGH OCCUPANCY BUILDING UNIT: +5280'
DESIGNATED OUTSIDE ACTIVITY AREA: +5280'
PUBLIC ROAD: 204' N (CR 52)
ABOVE GROUND UTILITY: 238' N
RAILROAD: +5280'
PROPERTY LINE: 212' N

SURFACE LOCATION

LAT: 40.36252N
LONG: 104.53044W
PDOP: 2.1
ELEV: 4668'
1/41/4: NE1/4NE1/4

ENTRY POINT

LAT: 40.36173N
LONG: 104.52927W
1/41/4: NE1/4NE1/4

BOTTOM HOLE

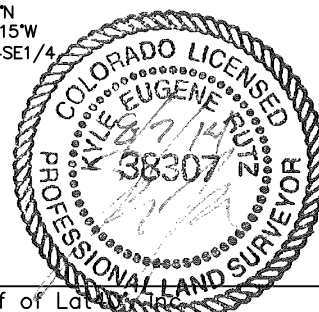
LAT: 40.34997N
LONG: 104.52915W
1/41/4: SE1/4SE1/4

LEGEND

- = ALIQUOT MONUMENT AS DESCRIBED
○ = CALCULATED POSITION

Kyle E. Rutz—On behalf of Lat40°
Colorado Licensed Professional
Land Surveyor No. 38307

DATE: 8/7/2014
PROJECT#: 2013181



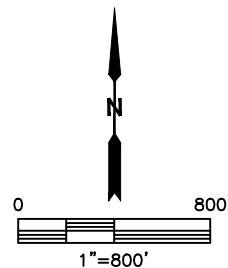
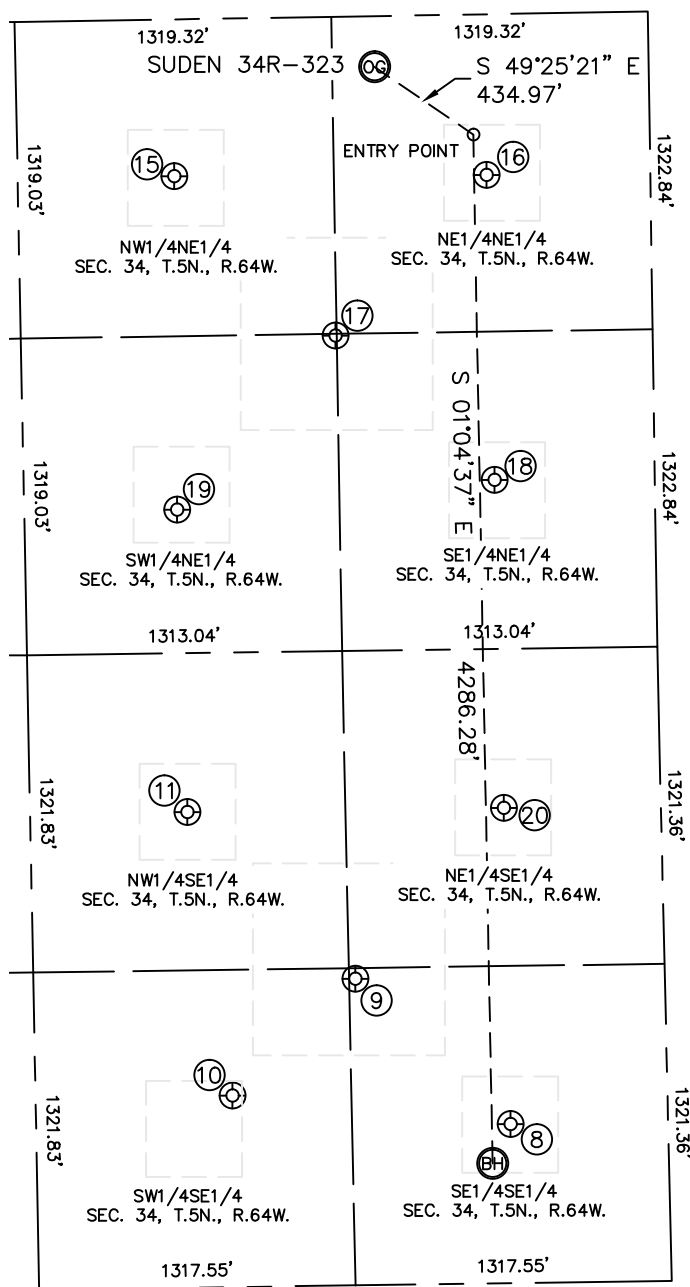


Lat40°, Inc. 1635 Foxtrail Drive, Suite 325 Loveland, CO 970-776-3321

SITE SKETCH

SUDEN 34R-323

SECTION: 34
TOWNSHIP: 5N
RANGE: 64W



WELL #	WELL NAME	SHL FOOTAGE				SHL LAT°	SHL LONG°	PDOP	ELEV.(FT)	1/4/1/4
8	ECKHARDT 44-34	662	FSL	656	FEL	40.35041	-104.52858	2.0	4629	SESE
9	ECKHARDT 5	1277	FSL	1289	FEL	40.35209	-104.53088	2.4	4627	SESE
10	ECKHARDT 34-34	797	FSL	1812	FEL	40.35078	-104.53273	1.7	4635	SWSE
11	ECKHARDT 34-1	1980	FSL	1974	FEL	40.35402	-104.53336	2.4	4637	NWSE
15	GAMEWELL 34-1	654	FNL	1984	FEL	40.36129	-104.53345	4.0	4684	NWNE
16	GAMEWELL 34-3	670	FNL	682	FEL	40.36127	-104.52879	1.9	4678	NENE
17	GAMEWELL 5	1329	FNL	1321	FEL	40.35945	-104.53107	2.1	4677	SWNE
18	GAMEWELL 34-4	1940	FNL	668	FEL	40.35778	-104.52872	2.1	4657	SENE
19	GAMEWELL 34-2	2043	FNL	1992	FEL	40.35748	-104.53347	2.0	4672	SWNE
20	ECKHARDT 43-34	1980	FSL	654	FEL	40.35403	-104.52863	2.1	4625	NESE

DATE: 8/7/2014
PROJECT#: 2013181