

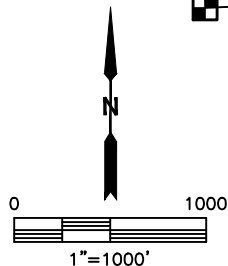
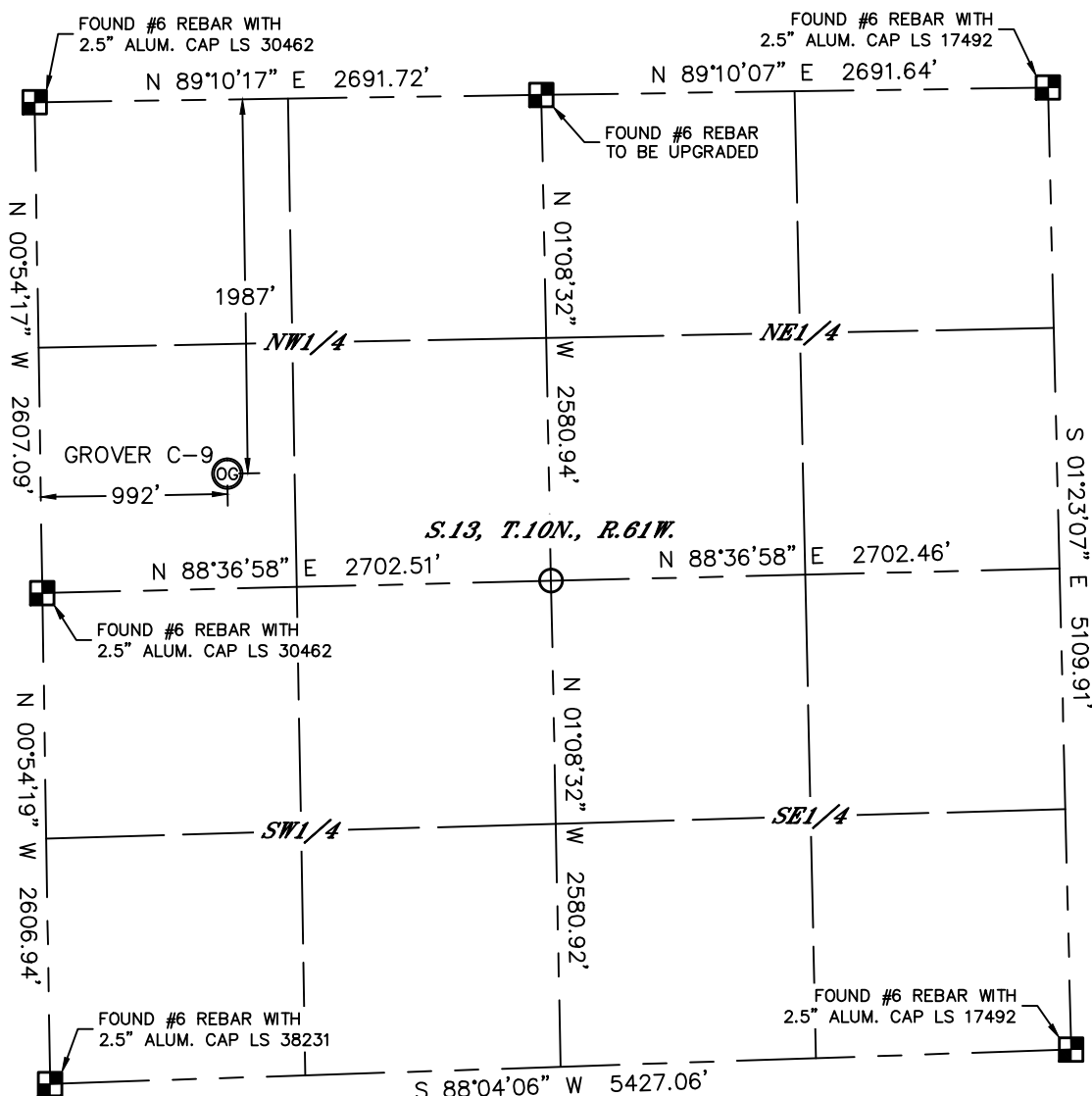


Lat40°, Inc. 1635 Foxtrail Drive, Suite 325 Loveland, CO 970-776-3321

WELL LOCATION CERTIFICATE

THIS MAP DOES NOT REPRESENT A BOUNDARY SURVEY

SECTION: 13
TOWNSHIP: 10N
RANGE: 61W



In accordance with a request from Derek Petrie with NGL WATER SOLUTIONS DJ Lat40°, Inc. has determined the surface location of the GROVER C-9 to be 1987' from the NORTH line and 992' from the WEST line as measured at right angles from the section lines of Section 13, Township 10 North, Range 61 West of the Sixth Principal Meridian, County of Weld, State of Colorado.

I hereby state that this Well Location Certificate was prepared by me, or under my direct supervision, that the fieldwork was completed on 6/20/2014, for and on behalf of NGL WATER SOLUTIONS DJ. That this is not a Land Survey Plat or an Improvement Survey Plat, and that it is not to be relied upon for establishment of fence, building, or other future improvement lines.

NOTE:

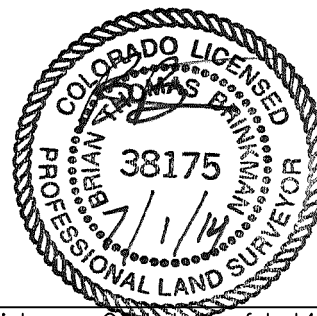
- 1) Bearings shown are Grid Bearings of the Colorado State Plane Coordinate System, North Zone, North American Datum 1983. The lined dimensions as contained herein are based upon the "U.S. Survey Foot."
 - 2) Ground elevations are based on an observed GPS elevation (NAVD 1988 DATUM).
 - 3) IMPROVEMENTS: See LOCATION DRAWING for all visible improvements within 500' of disturbed area.
 - 4) SURFACE USE: RANGELAND
 - 5) INSTRUMENT OPERATOR: BRIAN ROTTINGHAUS
- NEAREST CULTURAL ITEMS:
BUILDING: ±1474' SW
BUILDING UNIT: ±2426' NW (DILAPIDATED)
HIGH OCCUPANCY BUILDING UNIT: 5280'+
DESIGNATED OUTSIDE ACTIVITY AREA: 5280'+
PUBLIC ROAD: ±983' W (CR 95)
ABOVEGROUND UTILITY: ±958' W
RAILROAD: 5280'+
PROPERTY LINE: ±358' E

SURFACE LOCATION

LAT: 40.83597°N
LONG: 104.16035°W
PDOP: 2.4
ELEV: 5058'
1/4,1/4: SWNW

LEGEND

- = ALIQUOT MONUMENT AS DESCRIBED
○ = CALCULATED POSITION



Brian T. Brinkman—On Behalf of Lat40°, Inc.

Colorado Licensed Professional
Land Surveyor No. 38175

DATE: 6/30/2014
PROJECT#: 2014109