

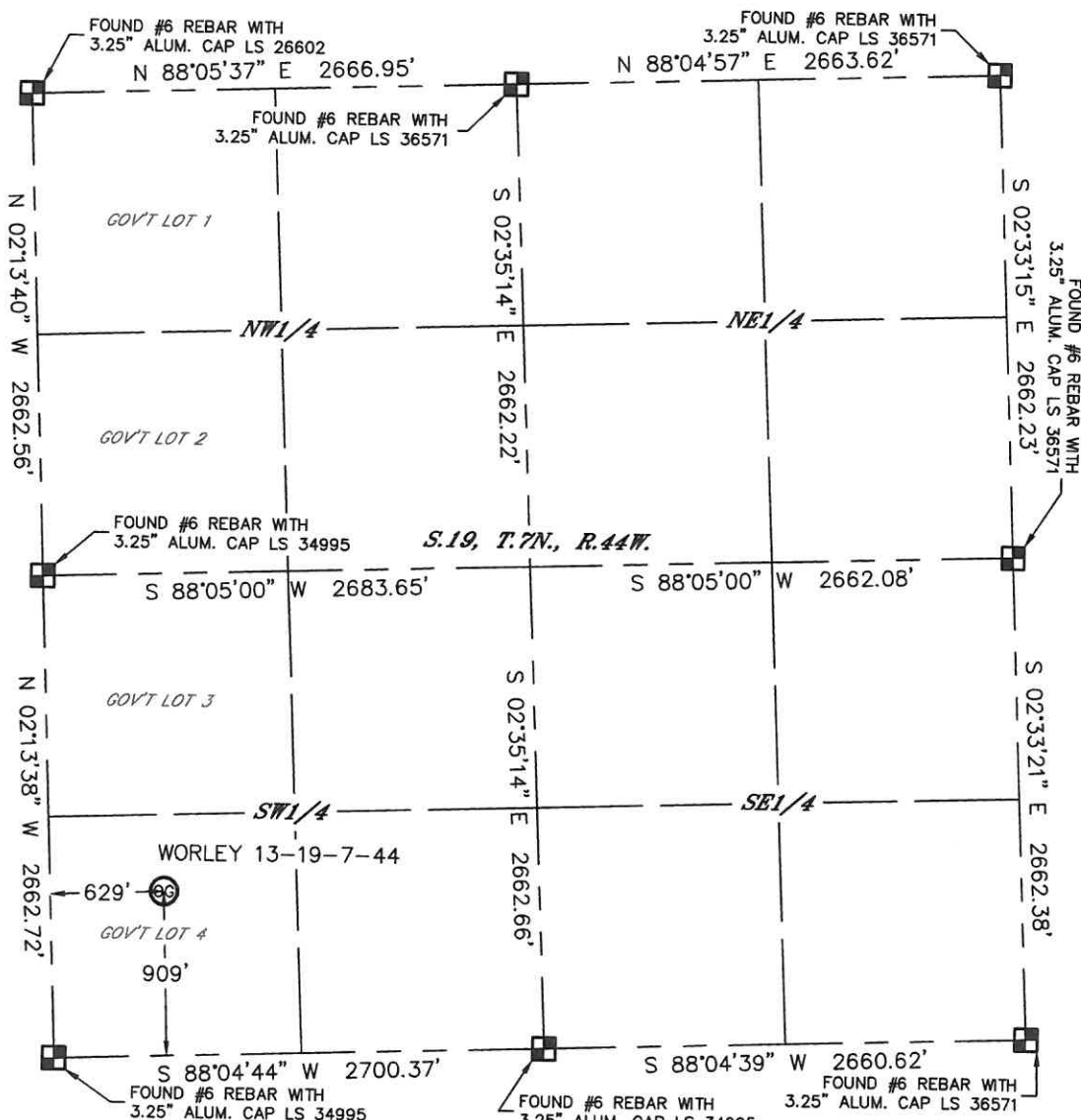


Lat40°, Inc. 1635 Foxtrail Drive, Suite 325 Loveland, CO 970-776-3321

WELL LOCATION CERTIFICATE

THIS MAP DOES NOT REPRESENT A BOUNDARY SURVEY

SECTION: 19
TOWNSHIP: 7N
RANGE: 44W



In accordance with a request from Michelle Lewis with Omimex Petroleum, Inc. Lat40°, Inc. has determined the surface location of the WORLEY 13-19-7-44 to be 909' from the SOUTH line and 629' from the WEST line as measured at right angles from the section lines of Section 19, Township 7 North, Range 44 West of the Sixth Principal Meridian, County of Phillips, State of Colorado.

I hereby state that this Well Location Certificate was prepared by me, or under my direct supervision, that the fieldwork was completed on 1/21/2014, for and on behalf of Omimex Petroleum, Inc. That this is not a Land Survey Plat or an Improvement Survey Plat, and that it is not to be relied upon for establishment of fence, building, or other future improvement lines.

SURFACE LOCATION

LAT: 40.55909°N
LONG: 102.31902°W
PDOP: 1.3
ELEV: 3752'
1/4,1/4: SW1/4SW1/4
(GOV'T LOT 4)

NOTE:

- 1) Bearings shown are Grid Bearings of the Colorado State Plane Coordinate System, North Zone, North American Datum 1983/2007. The lineal dimensions as contained herein are based upon the "U.S. Survey Foot."
 - 2) Ground elevations are based on an observed GPS elevation (NAVD 1988 DATUM).
 - 3) IMPROVEMENTS: See LOCATION DRAWING for all visible improvements within 500' of disturbed area.
 - 4) SURFACE USE: CROP LAND
 - 5) INSTRUMENT OPERATOR: ADAM KELLY
- NEAREST CULTURAL ITEMS:
BUILDING: ±1016' NW
BUILDING UNIT: ±1767' NW
HIGH OCCUPANCY BUILDING UNIT: 5280+
DESIGNATED OUTSIDE ACTIVITY AREA: 5280+
PUBLIC ROAD: (CR 37) 614' W
ABOVEGROUND UTILITY: 659' W
RAILROAD: 5280'+
PROPERTY LINE: 629' W

LEGEND

- = ALIQUOT MONUMENT AS DESCRIBED
○ = CALCULATED POSITION



Kyle E. Rutz-On behalf of Lat40°
Colorado Licensed Professional Surveyor
Land Surveyor No. 38307
DATE: 1/23/2014
PROJECT#: 2013176