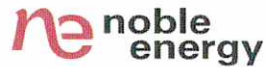


1625 Broadway
Suite 2000
Denver, CO 80202

Tel: 303.228.4000
Fax: 303.228.4280
www.nobleenergyinc.com



August 7, 2014

Colorado Oil and Gas Conservation Commission
The Chancery Building
1120 Lincoln Street, Suite 801
Denver, CO 80203
Attn: Mr. Matt Lepore, Director

RE: CROW CREEK AA01-724
Niobrara New Drill
Township 6 North, Range 63 West, 6th P.M.
Section 1: NE/4NE/4: 290' FNL & 1213' FEL (Surface Location)
Section 1: NE/4NE/4: 723' FNL & 911' FEL (Beginning of Lateral)
Section 12: NE/4NE/4: 30' FNL & 910' FEL (Bottom Hole Location)
Weld County, Colorado

Dear Director:

Noble Energy, Inc. ("NEI") is planning to drill the captioned boundary well in accordance with the provisions of COGCC Rule 318A.e.

NEI's proposed wellbore spacing unit consists of the E/2 Sec. 1 and N/2NE/4 Sec. 12, T6N, R63W, creating a 400-acre wellbore spacing unit for the Niobrara formation. NEI is the only owner within the proposed wellbore spacing unit, therefore NEI hereby attests that no notice letters are required under COGCC Rule 318A(l).e.(6).

Enclosed are copies of the following documents to assist you in your review and approval of NEI's proposed APD for the captioned well:

- Map & plat illustrating proposed wellbore spacing unit.

Thank you for your attention to the enclosed. NEI respectfully requests that the COGCC review the enclosed information and approve the Application for Permit to Drill the captioned well.

Sincerely,

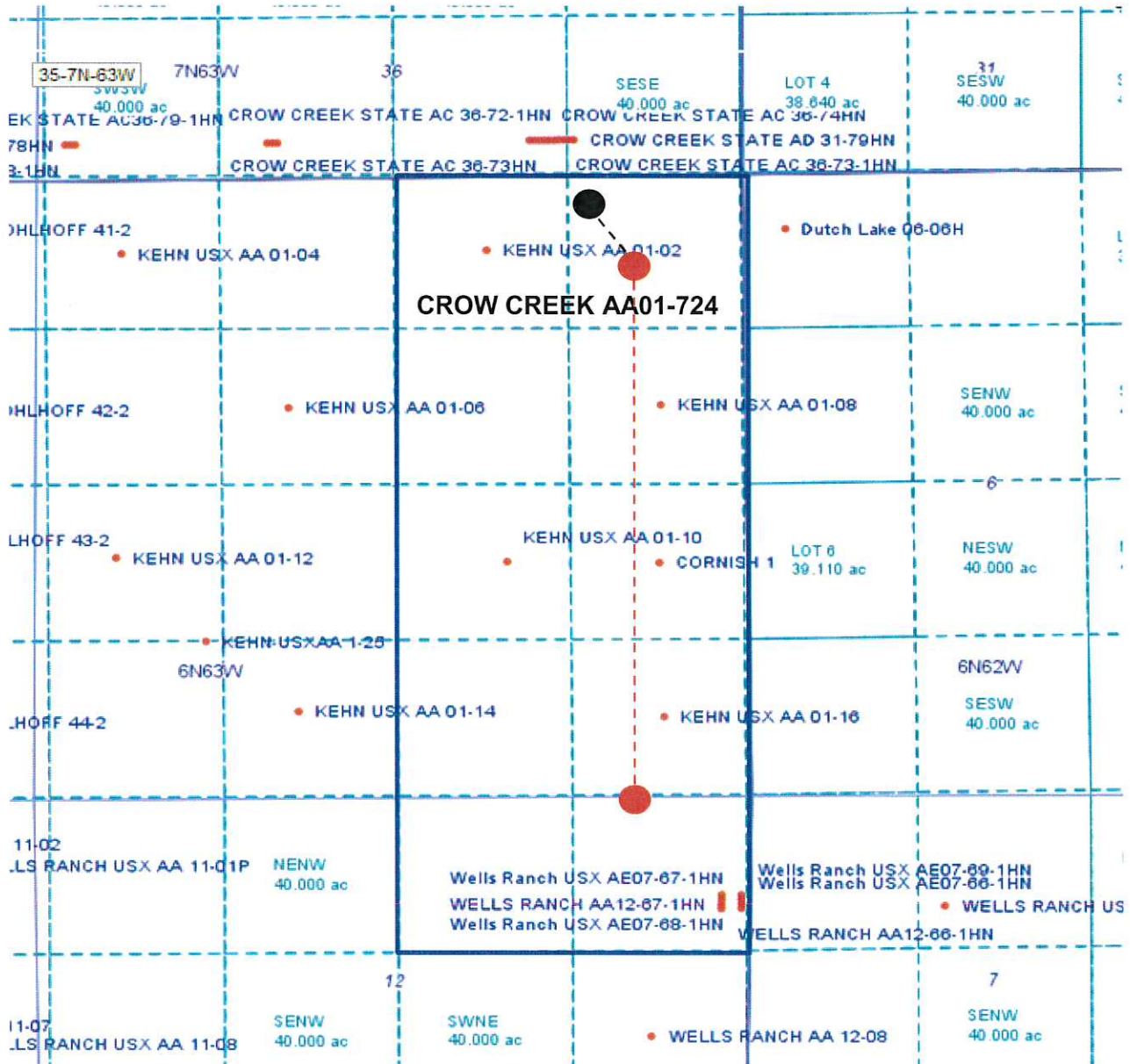
Jan Kajiwara

Jan Kajiwara
Regulatory Analyst III
Noble Energy Inc.

CROW CREEK AA01-724

Proposed Spacing Unit – Noble Energy, Inc.

E/2 Section 1, Township 6 North, Range 63 West
N/2NE/4 Section 12, Township 6 North, Range 63 West



Legend



Proposed 400.00 acre spacing unit



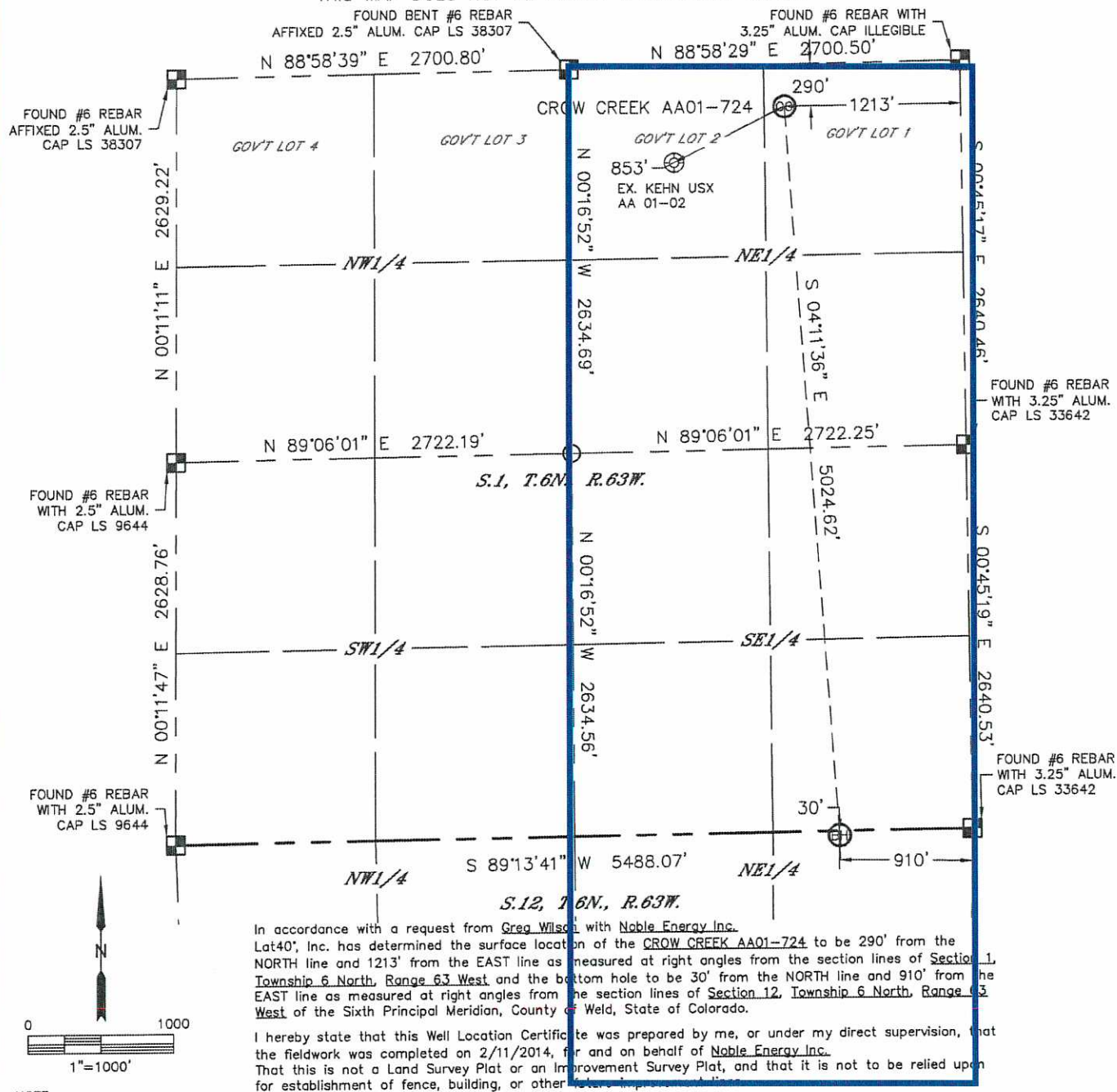
Bottom Hole Location

Lat40°, Inc. 1635 Foxtrail Drive, Suite 325 Loveland, CO 970-776-3321

WELL LOCATION CERTIFICATE

SECTION: 1
TOWNSHIP: 6N
RANGE: 63W



THIS MAP DOES NOT REPRESENT A BOUNDARY SURVEY



In accordance with a request from Greg Wilson with Noble Energy Inc., Lat401, Inc. has determined the surface location of the CROW CREEK AA01-724 to be 290' from the NORTH line and 1213' from the EAST line as measured at right angles from the section lines of Section 1, Township 6 North, Range 63 West and the bottom hole to be 30' from the NORTH line and 910' from the EAST line as measured at right angles from the section lines of Section 12, Township 6 North, Range 63 West of the Sixth Principal Meridian, County of Weld, State of Colorado.

I hereby state that this Well Location Certificate was prepared by me, or under my direct supervision, that the fieldwork was completed on 2/11/2014, for and on behalf of Noble Energy Inc.. That this is not a Land Survey Plat or an Improvement Survey Plat, and that it is not to be relied upon for establishment of fence, building, or other improvements.

NOTE:

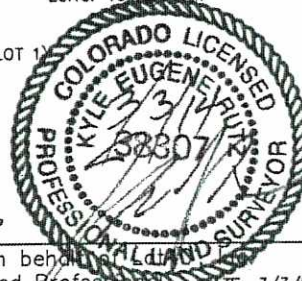
- 1) Bearings shown are Grid Bearings of the Colorado State Plane Coordinate System, North Zone, North American Datum 1983/2007. The lineal dimensions as contained herein are based upon the "U.S. Survey Foot."
- 2) Ground elevations are based on an observed GPS elevation (NAVD 1988 DATUM).
- 3) IMPROVEMENTS: See LOCATION DRAWING for all visible improvements within 500' of disturbed area.
- 4) SURFACE USE: RANGELAND
- 5) INSTRUMENT OPERATOR: MARK ANGELL
- 6) NEAREST EXISTING WELL: KEHN USX AA 01-02, 853' SW
- NEAREST CULTURAL ITEMS:
- BUILDING: ±2569' NE
- BUILDING UNIT: ±2569' NE
- HIGH OCCUPANCY BUILDING UNIT: 5280'+
- DESIGNATED OUTSIDE ACTIVITY AREA: 5280'+
- PUBLIC ROAD: (CR 74) 278' N
- ABOVEGROUND UTILITY: 262' N
- RAILROAD: 5280'+
- PROPERTY LINE: 290' N
- LEGEND
-  = ALIQUOT MONUMENT AS DE
-  = CALCULATED POSITION

SURFACE LOCATION

LAT: 40.52208N
LONG: 104.37920W
PDOP: 1.9
ELEV: 4857'
1/4,1/4: NE1/4NE1

BOTTOM HOLE

LAT: 40.50832N
LONG: 104.37811W



SHEET 1 OF 2

Kyle E. Rutz—On behalf of
Colorado Licensed Professional
Land Surveyor No. 38307

DATE: 3/3/2014
PROJECT#: 2014014

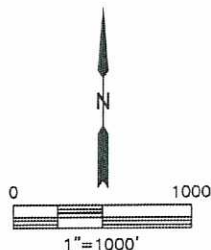
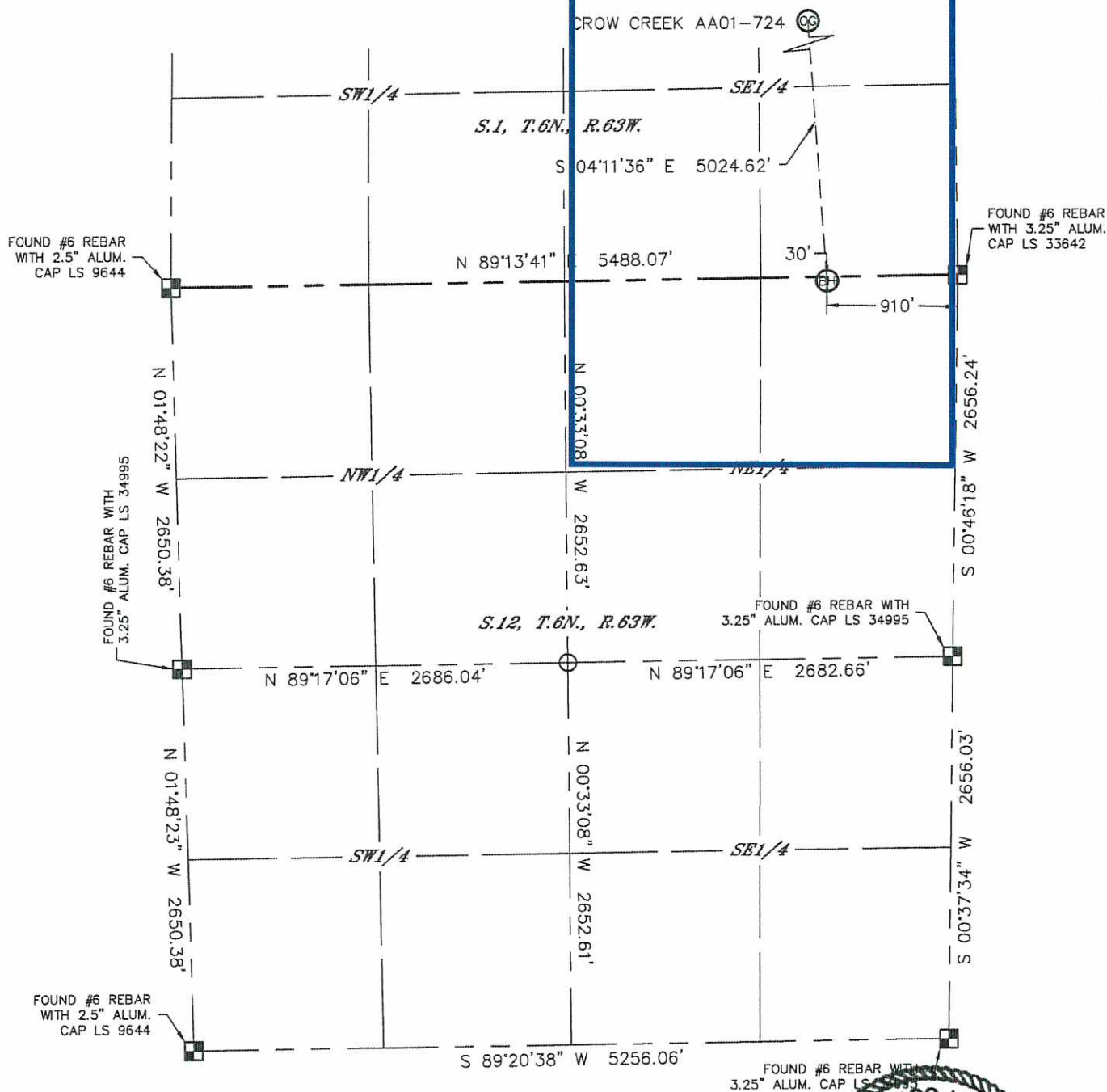


Lat40°, Inc. 1635 Foxtrail Drive, Suite 325 Loveland, CO 970-776-3821

WELL LOCATION CERTIFICATE

THIS MAP DOES NOT REPRESENT A BOUNDARY SURVEY

SECTION: 1
TOWNSHIP: 6N
RANGE: 63W



- LEGEND
- = ALIQUOT MONUMENT AS DESCRIBED
 - = CALCULATED POSITION

SHEET 2 OF 2

Kyle E. Rutz-On behalf of
Colorado Licensed Professional
Land Surveyor No. 38307



DATE: 3/3/2014
PROJECT#: 2014014