

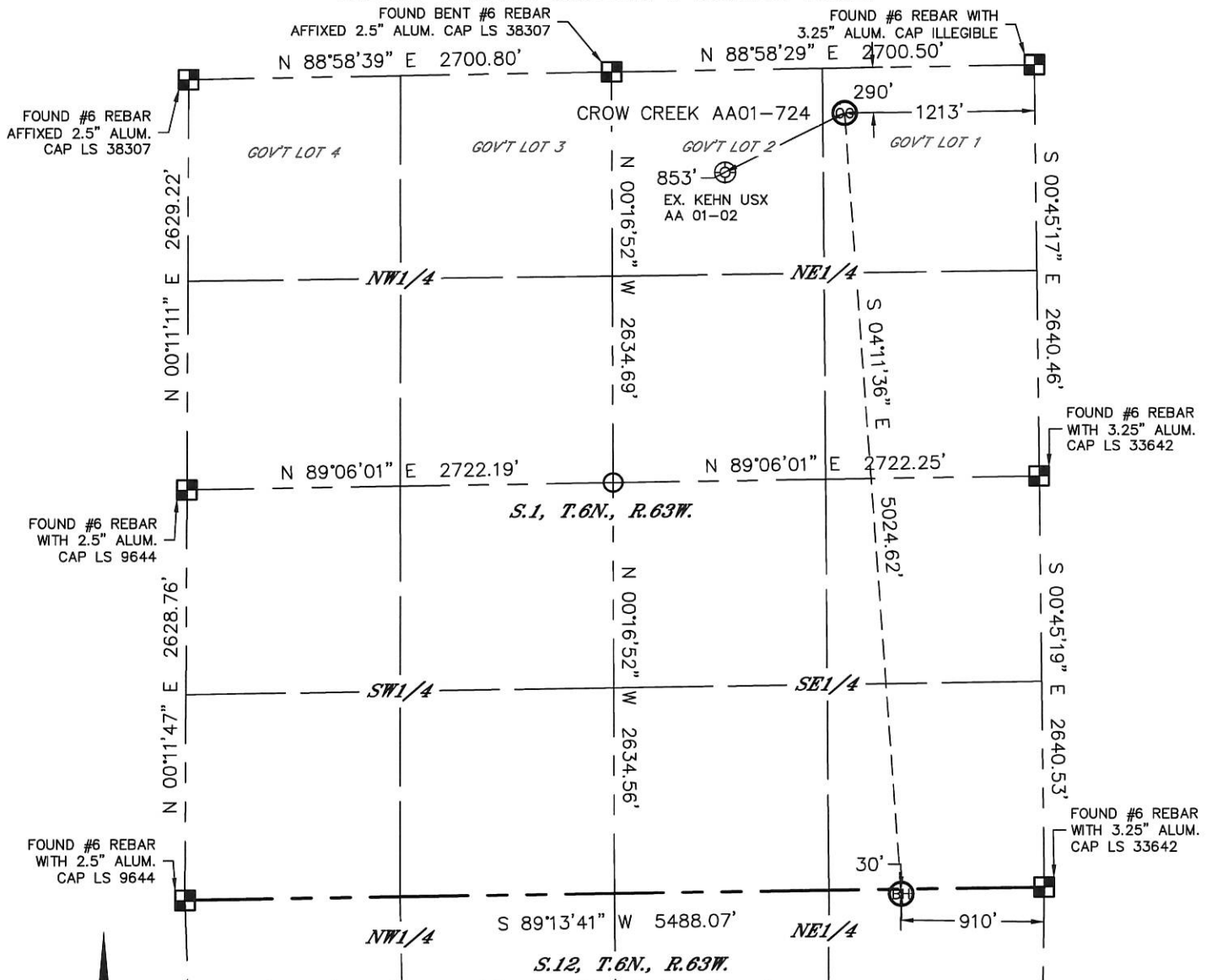


Lat40°, Inc. 1635 Foxtrail Drive, Suite 325 Loveland, CO 970-776-3321

WELL LOCATION CERTIFICATE

SECTION: 1
TOWNSHIP: 6N
RANGE: 63W

THIS MAP DOES NOT REPRESENT A BOUNDARY SURVEY



In accordance with a request from Greg Wilson with Noble Energy Inc., Lat40°, Inc. has determined the surface location of the CROW CREEK AA01-724 to be 290' from the NORTH line and 1213' from the EAST line as measured at right angles from the section lines of Section 1, Township 6 North, Range 63 West and the bottom hole to be 30' from the NORTH line and 910' from the EAST line as measured at right angles from the section lines of Section 12, Township 6 North, Range 63 West of the Sixth Principal Meridian, County of Weld, State of Colorado.

I hereby state that this Well Location Certificate was prepared by me, or under my direct supervision, that the fieldwork was completed on 2/11/2014, for and on behalf of Noble Energy Inc. That this is not a Land Survey Plat or an Improvement Survey Plat, and that it is not to be relied upon for establishment of fence, building, or other future improvement lines.

NOTE:

- 1) Bearings shown are Grid Bearings of the Colorado State Plane Coordinate System, North Zone, North American Datum 1983/2007. The lineal dimensions as contained herein are based upon the "U.S. Survey Foot."
- 2) Ground elevations are based on an observed GPS elevation (NAVD 1988 DATUM).
- 3) IMPROVEMENTS: See LOCATION DRAWING for all visible improvements within 500' of disturbed area.
- 4) SURFACE USE: RANGELAND
- 5) INSTRUMENT OPERATOR: MARK ANGELL
- 6) NEAREST EXISTING WELL: KEHN USX AA 01-02, 853' SW
- NEAREST CULTURAL ITEMS:
BUILDING: ±2569' NE
BUILDING UNIT: ±2569' NE
HIGH OCCUPANCY BUILDING UNIT: 5280'+
DESIGNATED OUTSIDE ACTIVITY AREA: 5280'+
PUBLIC ROAD: (CR 74) 278' N
ABOVEGROUND UTILITY: 262' N
RAILROAD: 5280'+
PROPERTY LINE: 290' N

SURFACE LOCATION

LAT: 40.52208N
LONG: 104.37920W
PDOP: 1.9
ELEV: 4857'
1/4, 1/4: NE1/4NE1/4 (GOV'T LOT 1)

BOTTOM HOLE

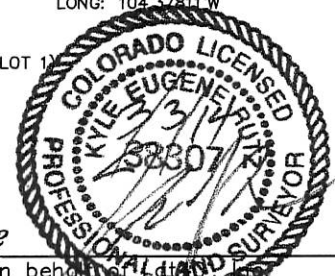
LAT: 40.50832N
LONG: 104.37811W

LEGEND

- = ALIQUOT MONUMENT AS DESCRIBED
- = CALCULATED POSITION

SHEET 1 OF 2

Kyle E. Rutz—On behalf of Lat40°, Inc.
Colorado Licensed Professional Land Surveyor No. 38307
DATE: 3/3/2014
PROJECT#: 2014014



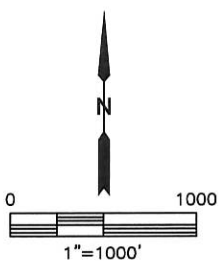
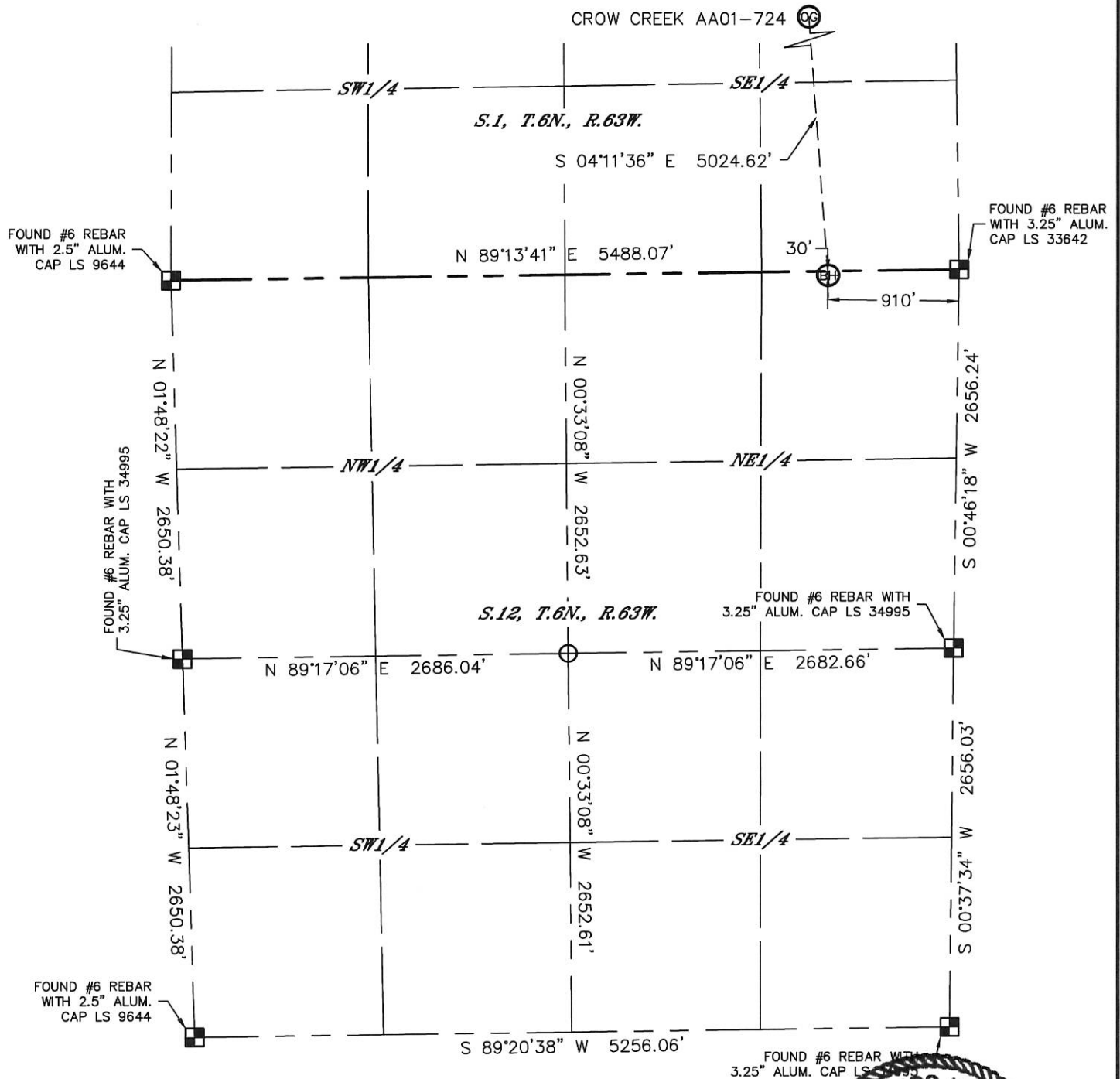


Lat40°, Inc. 1635 Foxtrail Drive, Suite 325 Loveland, CO 970-776-3321

WELL LOCATION CERTIFICATE

THIS MAP DOES NOT REPRESENT A BOUNDARY SURVEY

SECTION: 1
TOWNSHIP: 6N
RANGE: 63W

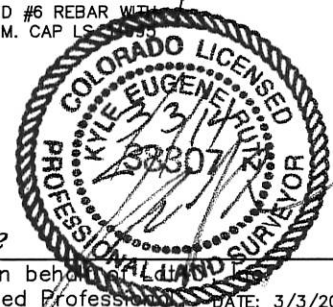


LEGEND

- = ALIQUOT MONUMENT AS DESCRIBED
- = CALCULATED POSITION

SHEET 2 OF 2

Kyle E. Rutz-On behalf of Lat40°, Inc.
Colorado Licensed Professional Land Surveyor No. 38307
DATE: 3/3/2014
PROJECT#: 2014014



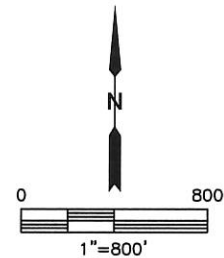
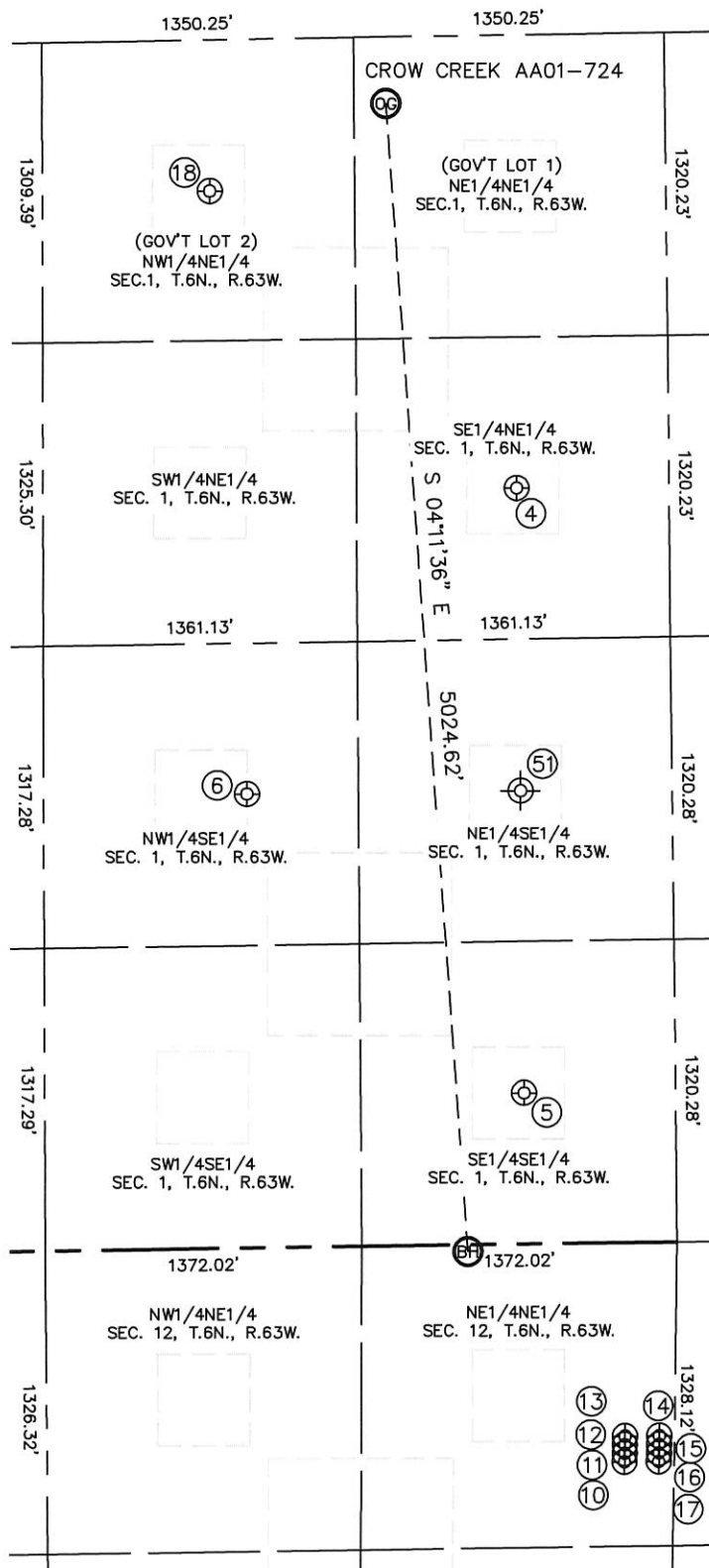


Lat40°, Inc. 1635 Foxtrail Drive, Suite 325 Loveland, CO 970-776-3321

SITE SKETCH

CROW CREEK AA01-724

SECTION: 1
TOWNSHIP: 6N
RANGE: 63W



SHEET 1 OF 2

DATE: 3/3/2014
PROJECT#: 2014014



Lat40°, Inc. 1635 Foxtrail Drive, Suite 325 Loveland, CO 970-776-3321

SITE SKETCH

CROW CREEK AA01-724

SECTION: 1
TOWNSHIP: 6N
RANGE: 63W

WELL NO.	WELL NAME	SHL FOOTAGE				SHL LAT°	SHL LONG°	PDOP	ELEV (FT.)	1/4/1/4
4	KEHN USX AA01-08	1979	FNL	664	FEL	40.51745	-104.37722	2.2	4864	SENE
5	KEHN USX AA01-16	660	FSL	659	FEL	40.51021	-104.37720	3.0	4890	SESE
6	KEHN USX AA01-10	1981	FSL	1848	FEL	40.51383	-104.38148	2.6	4858	NWSE
10	WELLS RANCH AA 12-66-1HN	960	FNL	217	FEL	40.50577	-104.37570	4.5	4892	NENE
11	WELLS RANCH AA 12-67-1HN	922	FNL	217	FEL	40.50587	-104.37570	4.7	4891	NENE
12	WELLS RANCH AA 12-68-1HN	885	FNL	216	FEL	40.50597	-104.37569	4.8	4891	NENE
13	WELLS RANCH AA 12-69-1HN	847	FNL	216	FEL	40.50608	-104.37569	4.9	4892	NENE
14	WELLS RANCH USX AE 07-69-1HN	847	FNL	67	FEL	40.50608	-104.37515	5.2	4892	NENE
15	WELLS RANCH USX AE 07-68-1HN	885	FNL	67	FEL	40.50598	-104.37515	5.5	4891	NENE
16	WELLS RANCH USX AE 07-67-1HN	922	FNL	67	FEL	40.50587	-104.37516	2.8	4891	NENE
17	WELLS RANCH USX AE 07-66-1HN	960	FNL	67	FEL	40.50577	-104.37516	2.8	4891	NENE
18	KEHN USX AA 01-02	658	FNL	1980	FEL	40.52106	-104.38196	4.4	4842	NWNE
51	CORNISH 1 (P&A)	1980	FSL	660	FEL	40.51380	-104.37731	NA	4857	NESE

SHEET 2 OF 2

NOTE: THE ABANDONED WELL DATA SHOWN IN RED ABOVE WAS OBTAINED FROM COGCC SCOUT CARDS.

DATE: 3/3/2014
PROJECT#: 2014014