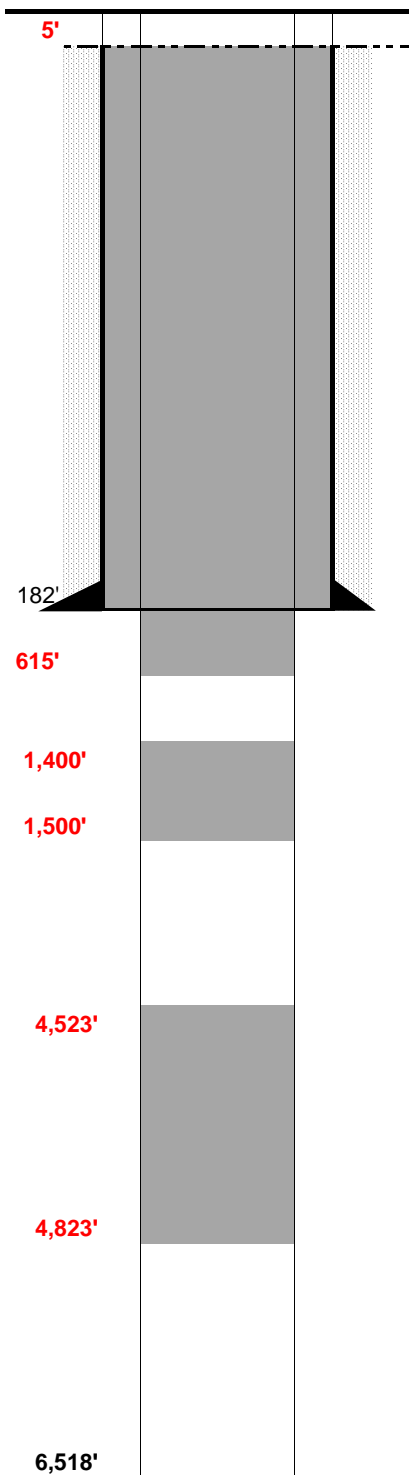


WELL NAME: Dennis #F
OPERATOR: Carrizo Oil & Gas
COMP ZONE: _____
LOCATION: 9N 58W 33Sec SE NW 6 PM

COUNTY: Weld
STATE: Colorado
API : 05-123-14187

SPUD: 12/27/88
D&A: 7/18/14
GL: 4760'

**SURFACE CASING**

DEPTH: 182' SIZE: 8.625" GRADE: _____ WT (#/ft): 24.0
 CEMENT: _____
 COMMENTS: _____

PRODUCTION CASING

DEPTH: _____ SIZE: _____ GRADE: _____ WT (#/ft): _____
 CEMENT: _____ TOC: _____
 COMMENTS: _____

PERFS: _____ - _____ PROD ZONE 1: _____
 PERFS: _____ - _____ ZONE 2: _____
 PERFS: _____ - _____ ZONE 3: _____

PREVIOUS PLUGS

RECOVERED: _____ SIZE: _____
 CMT 1: 205' - 155' COMMENT: 25 SX
 CMT 2: 30' - 4' COMMENT: 10 sx to surface
 CMT 3: _____ - _____ COMMENT: _____
 CMT 3: _____ - _____ COMMENT: _____

AS PLUGGED: Plug 1: 300' cement from 4823' to 4523' (100 sx)
 Plug 2: 100' cement from 1500' to 1400' (40 sx)
 Plug #3: 615' cement from 600' to surface (460 sx)

FORMATIONS:

FW Zone: _____
 NIOBRARA: 5,590'
 FORT HAYS 5,784'
 CODELL 5,828'
 D SAND 6,358'
 J SAND 6,446'