

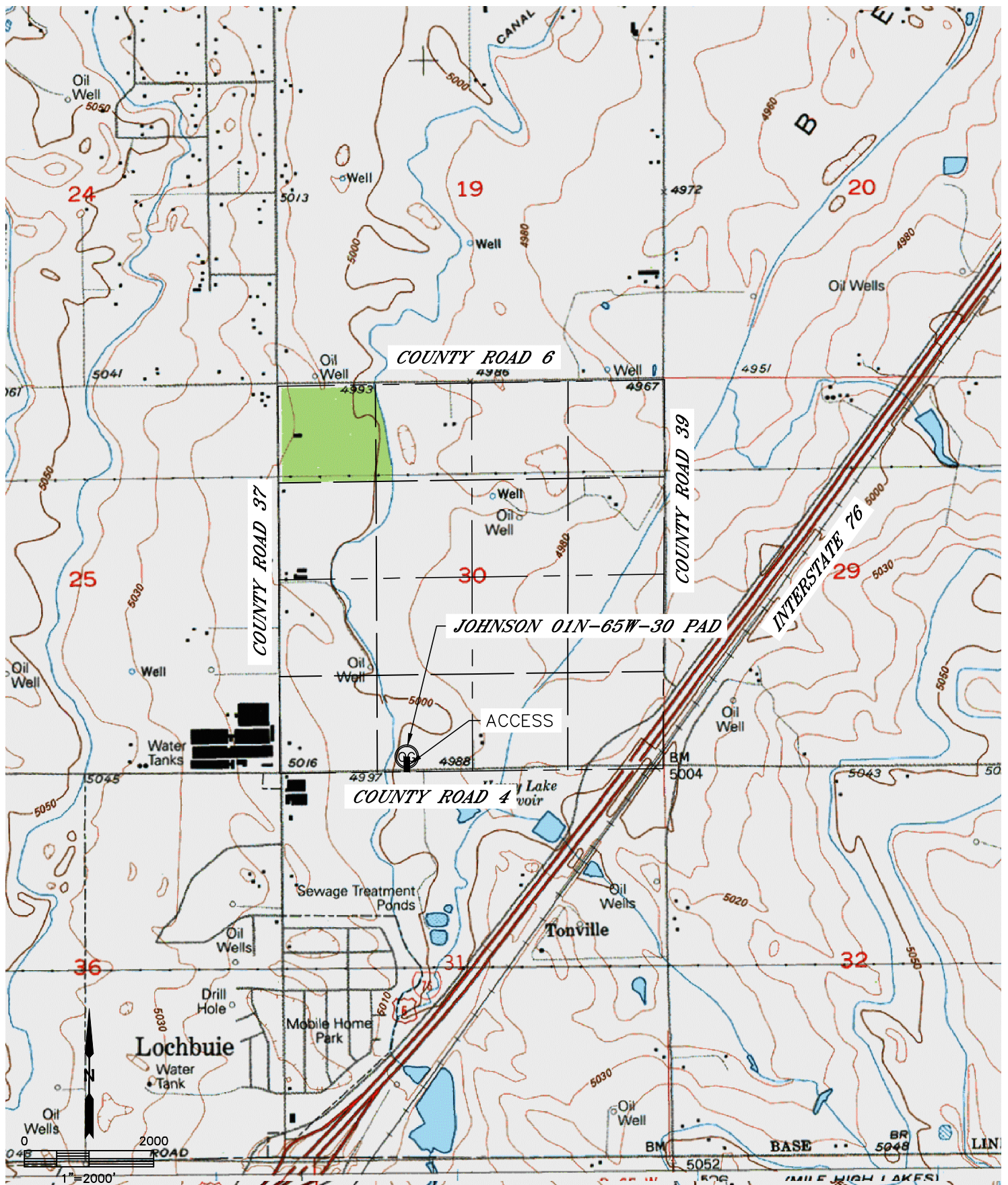


Lat40°, Inc. 1635 Foxtrail Drive, Suite 325 Loveland, CO 970-776-3321

ACCESS ROAD MAP

JOHNSON 01N-65W-30 PAD

SECTION: 30
TOWNSHIP: 1N
RANGE: 65W



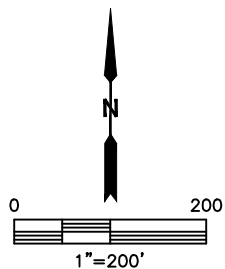
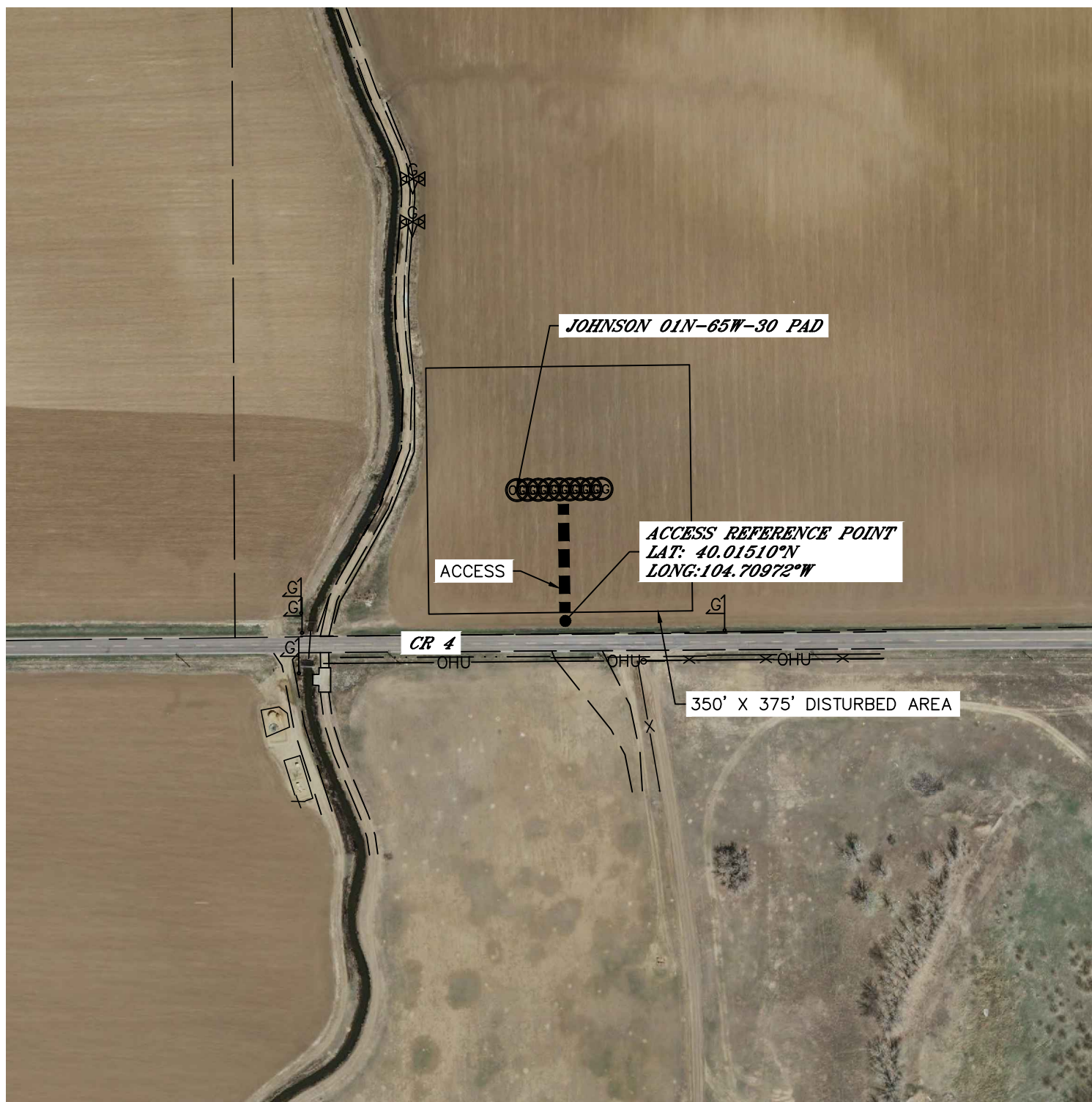


Lat40°, Inc. 1635 Foxtrail Drive, Suite 325 Loveland, CO 970-776-3321

ACCESS ROAD MAP

JOHNSON 01N-65W-30 PAD

SECTION: 30
TOWNSHIP: 1N
RANGE: 65W

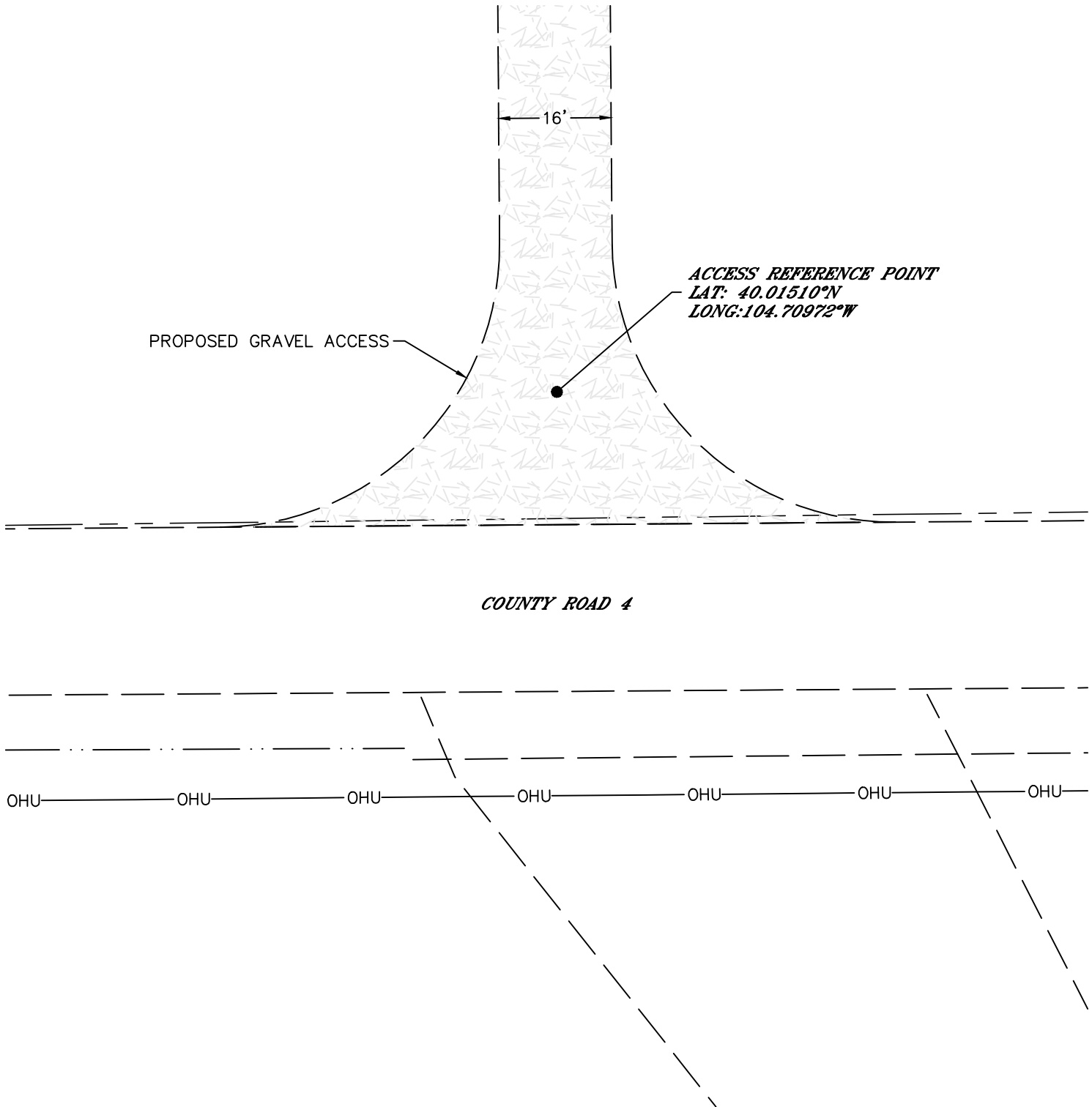




Lat40°, Inc. 1635 Foxtrail Drive, Suite 325 Loveland, CO 970-776-3321

ACCESS ROAD MAP
JOHNSON 01N-65W-30 PAD

SECTION: 30
TOWNSHIP: 1N
RANGE: 65W



PROPOSED PERMANENT ACCESS WILL BE A CLAY BASE WITH A 1.5" GRAVEL TOP 16' WIDE BUILT TO
BLM GOLD BOOK STANDARDS. THE MAXIMUM GRADE WILL NOT EXCEED 6%
NO CULVERTS EXISTING OR PROPOSED.



Lat40°, Inc. 1635 Foxtrail Drive, Suite 325 Loveland, CO 970-776-3321

ACCESS PICTURES

JOHNSON 01N-65W-30 PAD

SECTION: 30
TOWNSHIP: 1N
RANGE: 65W

DATE: 6/19/2014



VIEW WEST (CR 4)



VIEW EAST (CR 4)



VIEW NORTH