

Federal GM 522-9

T. 7 S.

1920 GLO Brass Cap
Lat.: 39.458669
Long.: -108.121937

1920 GLO Brass Cap
Lat.: 39.458669
Long.: -108.121937

1920 GLO Brass Cap
Lat.: 39.458721
Long.: -108.103407

1920 GLO Brass Cap
Lat.: 39.451822
Long.: -108.121956

1920 GLO Brass Cap
Lat.: 39.451890
Long.: -108.103366

SURFACE HOLE LOCATION

651 FNL, 561 FWL

Lat.: 39.456892°

Long.: -108.119954°

N.: 1601968.8 (COSP)

E.: 2260339.4 (COSP)

BOTTOM HOLE LOCATION

2308 FNL, 1423 FWL

Lat.: 39.452356°

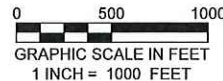
Long.: -108.116916°

N.: 1600292.6 (COSP)

E.: 2261149.3 (COSP)

PROPOSED PAD ELEV.: 6086.6
EXISTING GROUND ELEV.: 6086.6

SEE CONSTRUCTION LAYOUT
PLAT FOR VISIBLE IMPROVEMENTS
WITHIN 500' OF THIS LOCATION



- LEGEND -

FIELD LOCATED SECTION
MONUMENTS AS DESCRIBED

FIELD SURVEYED
WELL LOCATION

CALCULATED BOTTOM
HOLE LOCATION

CALCULATED SECTION
CORNER LOCATION

SURVEYORS STATEMENT

I, MICHAEL J. LANGHORNE, A REGISTERED LAND SURVEYOR IN THE STATE OF COLORADO DO HEREBY CERTIFY THAT THE SURVEY SHOWN HEREON WAS PREPARED UNDER MY DIRECT SUPERVISION AND HAS BEEN STAKED ON THE GROUND AS SHOWN ON THE PLAT AND CHECKING THAT THIS MAP IS A TRUE REPRESENTATION THEREOF.

MICHAEL J. LANGHORNE, COLORADO REGISTRATION NO. 36572
FOR AND ON BEHALF OF
BOOKCLIFF SURVEY SERVICES, INC.

REFERENCES

- 1) Dependent Resurvey of a Portion and Extension Survey
T. 7 S., R. 96 W., 6th P.M (GLO PLAT)
- 2) U.S.G.S. QUAD: Parachute, CO

136 East Third Street
Rifle, Colorado
81650 Ph. (970)
625-2720 Fax (970)
625-2773

BOOKCLIFF
Survey Services, Inc.

SURVEY DATE: 7/24/14
MAP DATE: 7/25/14
SCALE: 1" = 1000'
PLAT: 1 of 1
PROJECT: Valley

NOTES

- 1) ELEVATIONS BASED ON N.A. V.D. 1988 PUBLISHED COORDINATES.
- 2) LATITUDES AND LONGITUDES ARE BASE ON NAD 83, PUBLISHED COORDINATES
- 3) STATE PLANE COORDINATES ARE BASED ON COLORADO CENTRAL ZONE, U.S. SURVEY FEET.
- 4) ELEVATION MASK SET TO 15°
- 5) GPS OPERATOR J. KIRKPATRICK, OBSERVED A PDOP 2.2 ON SURVEY POINT NUMBER 435.
- 6) SURFACE AND BOTTOM HOLE LOCATIONS ARE MEASURED 90° FROM SECTION LINES.

WELL LOCATION PLAT Prepared for:
WPXENERGY

WPX Energy Rocky Mountain, LLC

NW1/4 NW1/4, SECTION 9
T. 7 S., R. 96 W. of the 6th. P.M.
GARFIELD COUNTY, COLORADO