

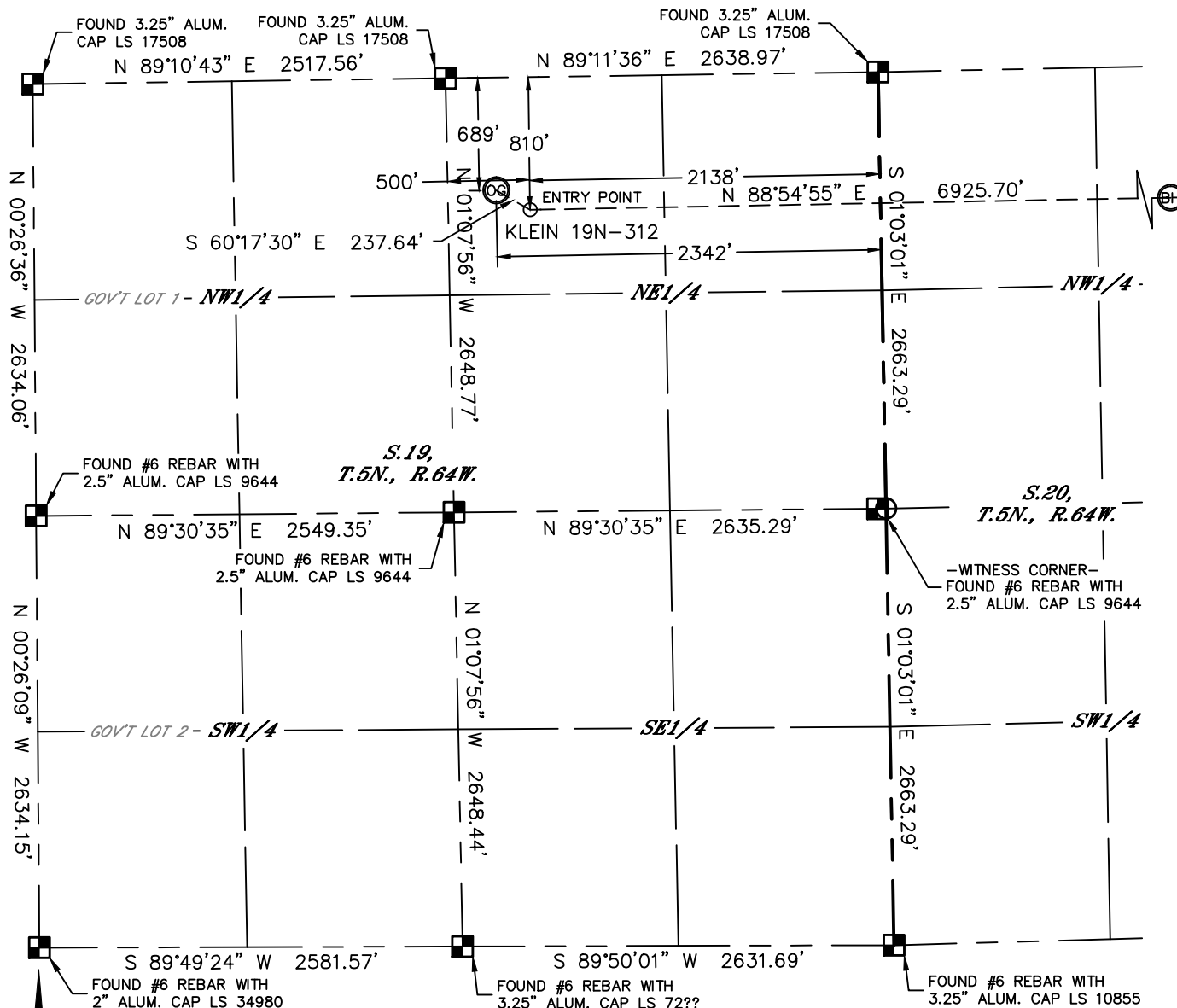


Lat40°, Inc. 1635 Foxtrail Drive, Suite 325 Loveland, CO 970-776-3321

WELL LOCATION CERTIFICATE

THIS MAP DOES NOT REPRESENT A BOUNDARY SURVEY

SECTION: 19
TOWNSHIP: 5N
RANGE: 64W



In accordance with a request from Al Bragg with PDC ENERGY Lat40°, Inc. has determined the surface location of the KLEIN 19N-312 to be 689' from the NORTH line and 2342' from the EAST line as measured at right angles from the section lines of Section 19, Township 5 North, Range 64 West and the bottom hole to be 810' from the NORTH line and 500' from the EAST line as measured at right angles from the section lines of Section 20, Township 5 North, Range 64 West of the Sixth Principal Meridian, County of Weld, State of Colorado.

I hereby state that this Well Location Certificate was prepared by me, or under my direct supervision, that the fieldwork was completed on 11/26/2013, for and on behalf of PDC ENERGY That this is not a Land Survey Plat or an Improvement Survey Plat, and that it is not to be relied upon for establishment of fence, building, or other future improvement lines.

SURFACE LOCATION
LAT: 40.38999°N
LONG: 104.59176°W
PDOP: 2.1
ELEV: 4628'
1/4,1/4: NW1/4NE1/4

BOTTOM HOLE
LAT: 40.38982°N
LONG: 104.56617°W
1/4,1/4: NE1/4NE1/4

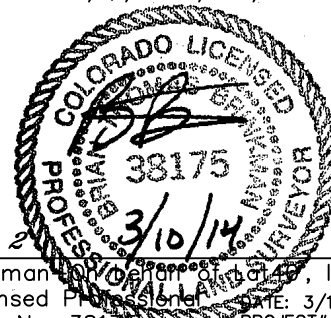
ENTRY POINT
LAT: 40.38966°N
LONG: 104.59102°W
1/4,1/4: NW1/4NE1/4

LEGEND

- = ALIQUOT MONUMENT AS DESCRIBED
- = CALCULATED POSITION

SHEET 1 OF 2

Brian T. Brinkman, on behalf of Lat40°, Inc.
Colorado Licensed Professional Land Surveyor No. 38175
DATE: 3/10/2014
PROJECT#: 2013130



NOTE:

- 1) Bearings shown are Grid Bearings of the Colorado State Plane Coordinate System, North Zone, North American Datum 1983/2007. The lineal dimensions as contained herein are based upon the "U.S. Survey Foot."
- 2) Ground elevations are based on an observed GPS elevation (NAVD 1988 DATUM).
- 3) IMPROVEMENTS: See LOCATION DRAWING for all visible improvements within 500' of disturbed area.
- 4) SURFACE USE: CROPLAND
- 5) INSTRUMENT OPERATOR: BRIAN ROTTINGHAUS
- 6) NEAREST CULTURAL ITEMS:
BUILDING: ±453' NW
BUILDING UNIT: ±521' NW
HIGH OCCUPANCY BUILDING UNIT: 5280'+
DESIGNATED OUTSIDE ACTIVITY AREA: 5280'+
PUBLIC ROAD: HIGHWAY 34, 692' N
ABOVEGROUND UTILITY: 290' W
RAILROAD: ±3156' SE
PROPERTY LINE: 296' W

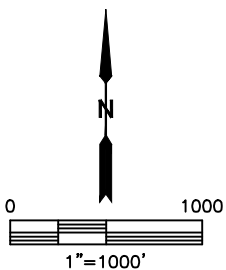
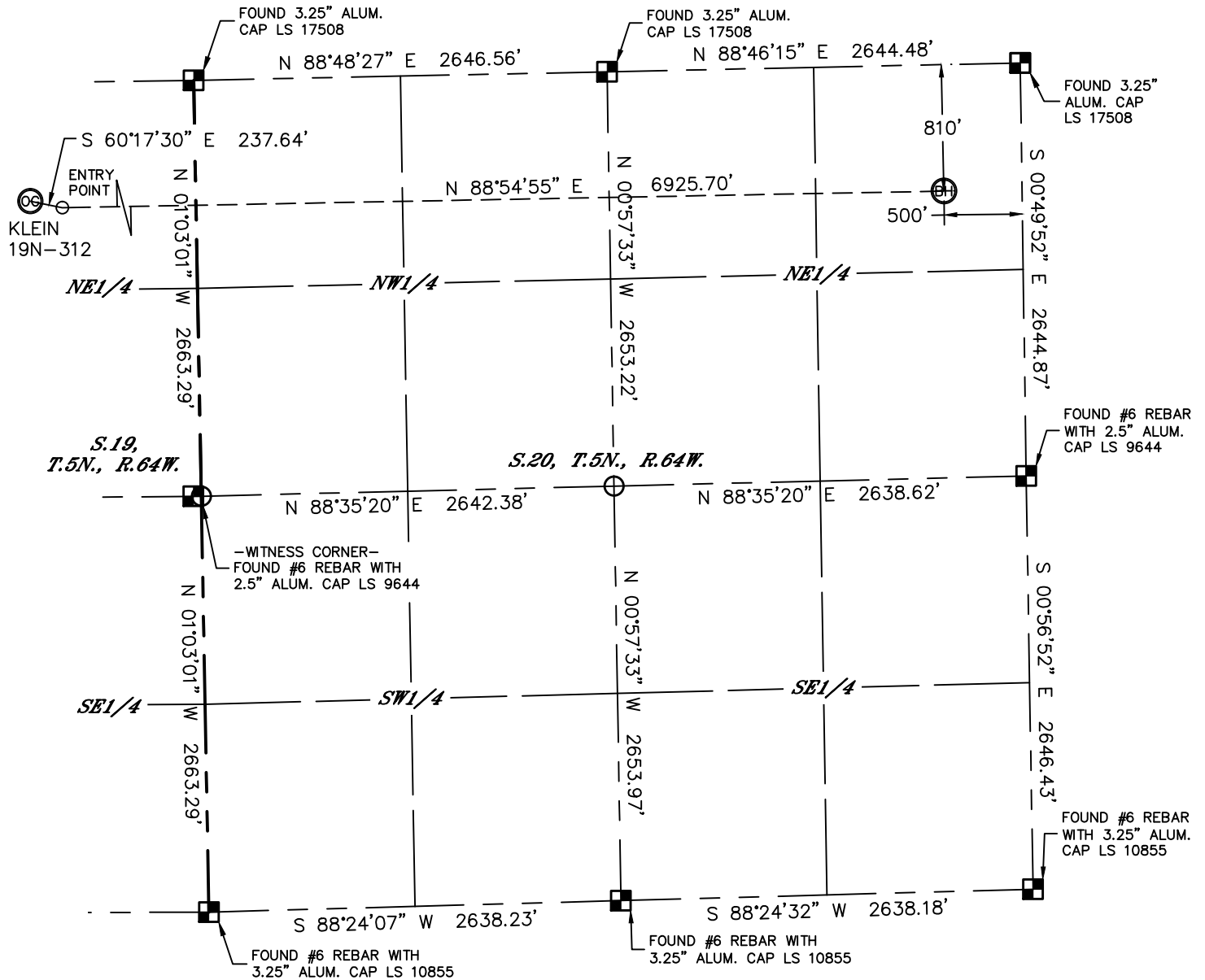


Lat40°, Inc. 1635 Foxtrail Drive, Suite 325 Loveland, CO 970-776-3321



WELL LOCATION CERTIFICATE

THIS MAP DOES NOT REPRESENT A BOUNDARY SURVEY

SECTION: 19
TOWNSHIP: 5N
RANGE: 64W

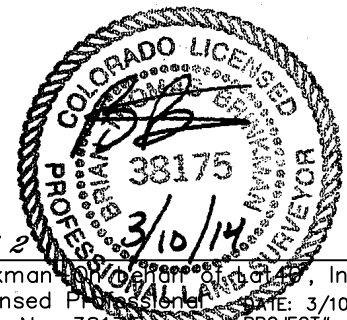


LEGEND

-  = ALIQUOT MONUMENT AS DESCRIBED
-  = CALCULATED POSITION

SHEET 2 OF 2

Brian T. Brinkman, Professional Land Surveyor No. 38175, Inc.
Colorado Licensed Professional Land Surveyor
DATE: 3/10/2014
PROJECT#: 2013130



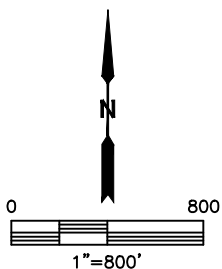
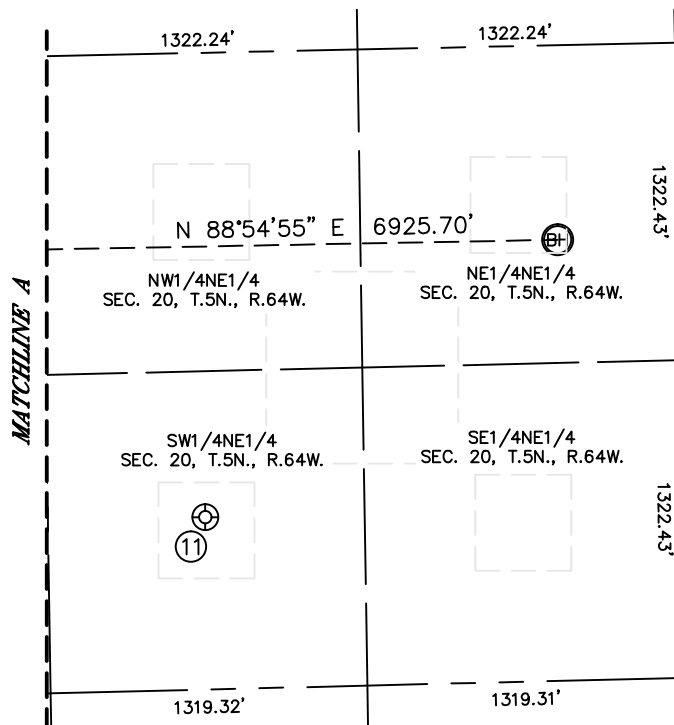
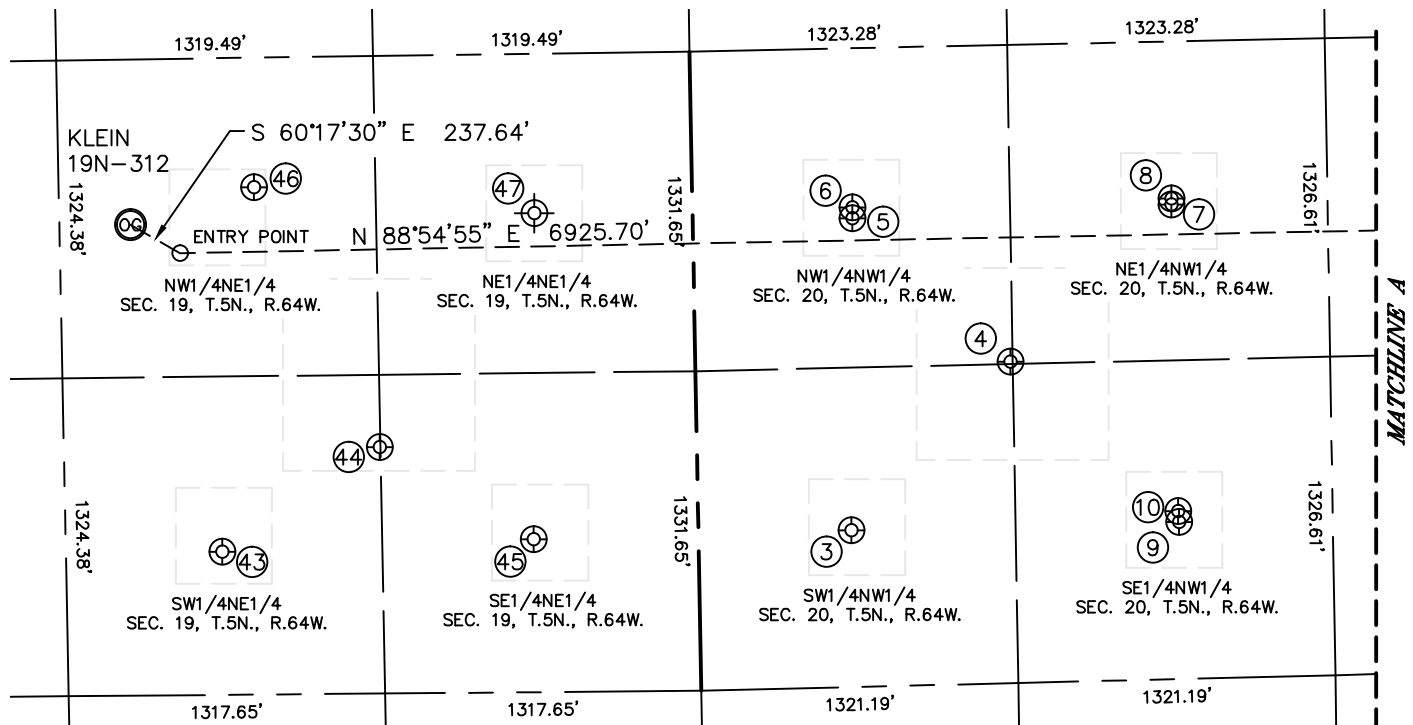


Lat40°, Inc. 1635 Foxtrail Drive, Suite 325 Loveland, CO 970-776-3321

SITE SKETCH

KLEIN 19N-312

SECTION: 19
TOWNSHIP: 5N
RANGE: 64W



SHEET 1 OF 2

DATE: 3/10/2014
PROJECT#: 2013130



Lat40°, Inc. 1635 Foxtrail Drive, Suite 325 Loveland, CO 970-776-3321

SITE SKETCH

KLEIN 19N-312

SECTION: 19
TOWNSHIP: 5N
RANGE: 64W

WELL NO.	WELL NAME	SHL FOOTAGE				SHL LAT°	SHL LONG°	PDOP	ELEV (FT.)	1/4/1/4
3	DUELL 20-1	2008	FNL	637	FWL	40.38641	-104.58103	2.1	4621	SWNW
4	PIGEON 5-JAN	1319	FNL	1312	FWL	40.38832	-104.57863	2.1	4621	NWNW
5	PIGEON 1-6B	708	FNL	665	FWL	40.38998	-104.58097	2.1	4622	NWNW
6	PIGEON 1	528	FNL	666	FWL	40.39010	-104.58096	2.1	4622	NWNW
7	LUCILLE 1-6I	679	FNL	1995	FWL	40.39010	-104.57620	2.0	4619	NENW
8	LUCILLE 20-1	654	FNL	1995	FWL	40.39016	-104.57620	2.0	4620	NENW
9	BRENT 1-6I	2002	FNL	2003	FWL	40.38647	-104.57613	3.1	4623	SENW
10	BRENT 1	1957	FNL	2000	FWL	40.38659	-104.57614	2.4	4623	SENW
11	VICTOR KLEIN 20-1A	1934	FNL	1985	FEL	40.38669	-104.57148	2.3	4619	SWNE
43	LOUIS KLEIN 19-2	2056	FNL	1985	FEL	40.38624	-104.59044	1.6	4625	SWNE
44	SETH 5	1630	FNL	1321	FEL	40.38742	-104.58807	1.3	4624	SWNE
45	LEWIS KLEIN 19-1	2022	FNL	686	FEL	40.38635	-104.58578	5.4	4623	SENE
46	SETH 1	540	FNL	1825	FEL	40.39040	-104.58991	1.9	4627	NWNE
47	PAIGE 1 (D&A)	665	FNL	659	FEL	40.39011	-104.585696	N/A	4615	NENE

NOTE: THE ABANDONED WELL DATA SHOWN IN RED ABOVE WAS OBTAINED FROM COGCC SCOUT CARDS.

SHEET 2 OF 2

DATE: 12/30/2013
PROJECT#: 2013130