



**Bill Barrett Corporation**

## **Bill Barrett Corp.**

**Weld Co., CO**

**Sec.35-T5N-R62W**

**Anschutz State 5-62-35-1724BH2**

**Wellbore #1**

**Plan: Design #1**

## **Standard Planning Report**

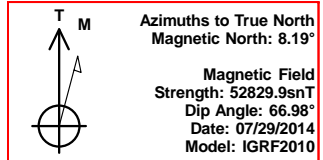
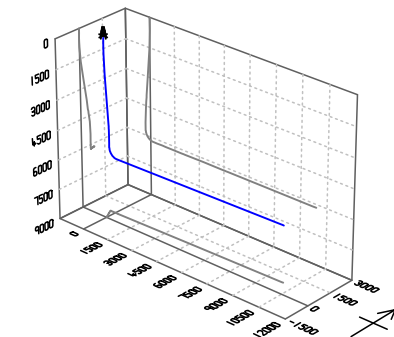
**29 July, 2014**

# **Archer**



Bill Barrett Corp.  
Project: Weld Co., CO  
Site: Sec.35-T5N-R62W  
Well: Anschutz State 5-62-35-1724BH2  
Wellbore: Wellbore #1  
Design: Design #1  
Lat: 40° 21' 26.420 N  
Long: 104° 17' 55.770 W  
Pad GL: 4609.00  
KB: WELL @ 4632.00usft (Original Well Elev)

# Archer



## SECTION DETAILS

MD	Inc	Azi	TVD	+N/-S	+E/-W	Dleg	TFace	Vsect	Annotation
0.00	0.00	0.00	0.00	0.00	0.00	0.00	0.00	0.00	
900.00	0.00	0.00	900.00	0.00	0.00	0.00	0.00	0.00	Start Build 2.00
1391.92	9.84	331.45	1389.51	37.01	-20.14	2.00	331.45	-19.28	Start 3397.49 hold at 1391.92 MD
4789.41	9.84	331.45	4737.03	546.93	-297.61	0.00	0.00	-284.93	Start Drop -2.00
5281.33	0.00	0.00	5226.54	583.94	-317.75	2.00	180.00	-304.21	Start 500.00 hold at 5281.33 MD
5781.33	0.00	0.00	5726.54	583.94	-317.75	0.00	0.00	-304.21	Start Build 12.00
6533.24	90.23	88.68	6204.00	594.98	161.50	12.00	88.68	175.16	Start 9742.82 hold at 6533.24 MD
16276.06	90.23	88.68	6165.00	819.46	9901.65	0.00	0.00	9917.90	TD at 16276.06

## WELL DETAILS: Anschutz State 5-62-35-1724BH2

+N/-S	+E/-W	Northing	Ground Level:	4609.00	Latitude	Longitude	Slot
0.00	0.00	1375286.395	Easting	3334739.959	40° 21' 26.420 N	104° 17' 55.770 W	

## PROJECT DETAILS: Weld Co., CO

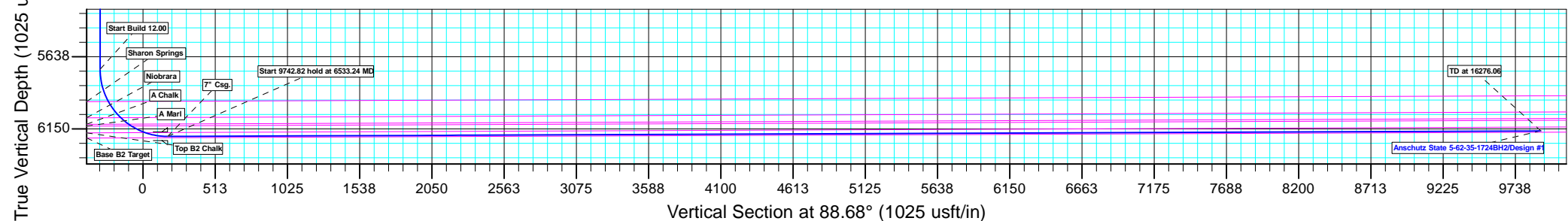
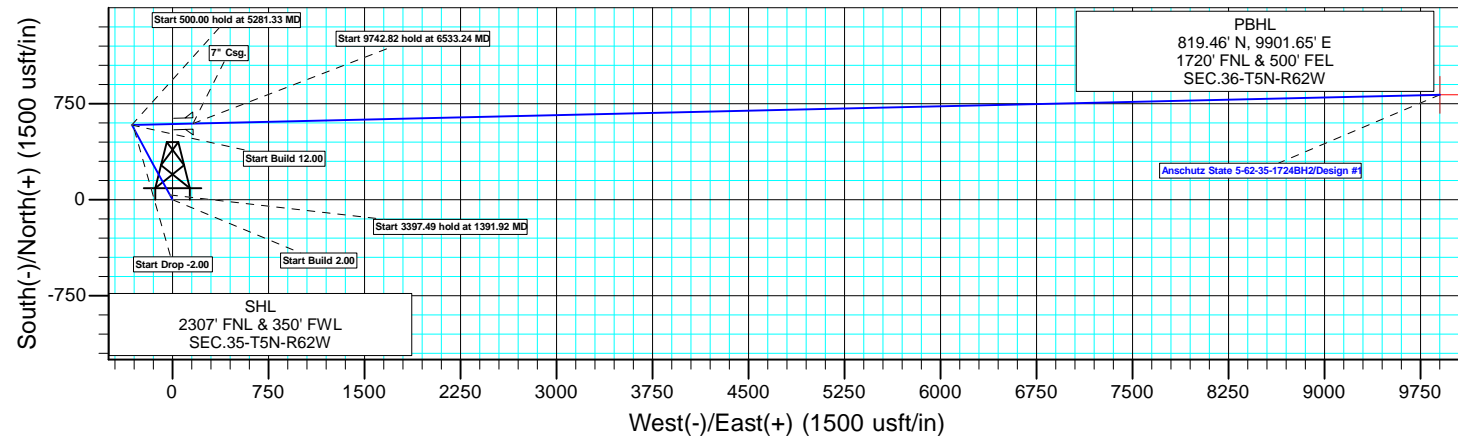
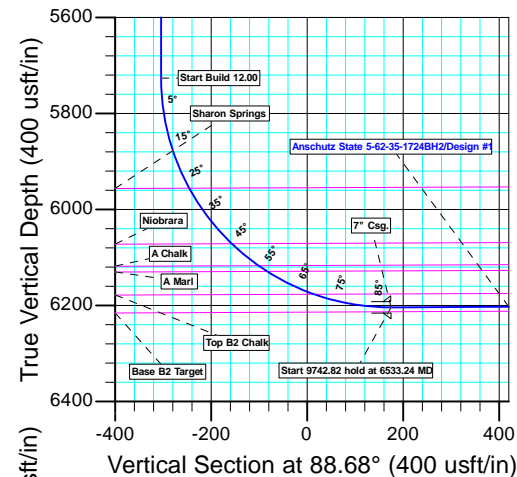
Geodetic System: US State Plane 1983  
Datum: North American Datum 1983  
Ellipsoid: GRS 1980  
Zone: Colorado Northern Zone  
System Datum: Mean Sea Level

## CASING DETAILS

TVD	MD	Name
6204.00	6533.24	7" Csg.

## WELLBORE TARGET DETAILS (LAT/LONG)

Name	TVD	+N/-S	+E/-W	Latitude	Longitude	Shape Point
Anschutz State 5-62-35-1724BH2 tgt	6165.00	819.46	9901.65	40° 21' 34.499 N	104° 15' 47.858 W	



Plan: Design #1 (Anschutz State 5-62-35-1724BH2/Wellbore #1)

Created By: Ricky Osburn Date: 10:02, July 29 2014

<b>Database:</b>	EDMDBBW	<b>Local Co-ordinate Reference:</b>	Well Anschutz State 5-62-35-1724BH2
<b>Company:</b>	Bill Barrett Corp.	<b>TVD Reference:</b>	WELL @ 4632.00usft (Original Well Elev)
<b>Project:</b>	Weld Co., CO	<b>MD Reference:</b>	WELL @ 4632.00usft (Original Well Elev)
<b>Site:</b>	Sec.35-T5N-R62W	<b>North Reference:</b>	True
<b>Well:</b>	Anschutz State 5-62-35-1724BH2	<b>Survey Calculation Method:</b>	Minimum Curvature
<b>Wellbore:</b>	Wellbore #1		
<b>Design:</b>	Design #1		

<b>Project</b>	Weld Co., CO		
<b>Map System:</b>	US State Plane 1983	<b>System Datum:</b>	Mean Sea Level
<b>Geo Datum:</b>	North American Datum 1983		
<b>Map Zone:</b>	Colorado Northern Zone		

Site		Sec.35-T5N-R62W			
Site Position:		Northing:	1,375,286.395 usft	Latitude:	40° 21' 26.420 N
From:	Lat/Long	Easting:	3,334,739.959 usft	Longitude:	104° 17' 55.770 W
Position Uncertainty:	0.00 usft	Slot Radius:	13-3/16"	Grid Convergence:	0.78 °

Well	Anschutz State 5-62-35-1724BH2					
Well Position	+N/-S	0.00 usft	Northing:	1,375,286.395 usft	Latitude:	40° 21' 26.420 N
	+E/-W	0.00 usft	Easting:	3,334,739.959 usft	Longitude:	104° 17' 55.770 W
Position Uncertainty		0.00 usft	Wellhead Elevation:	usft	Ground Level:	4,609.00 usft

<b>Wellbore</b>	Wellbore #1				
<b>Magnetics</b>	<b>Model Name</b>	<b>Sample Date</b>	<b>Declination (°)</b>	<b>Dip Angle (°)</b>	<b>Field Strength (nT)</b>
	IGRF2010	2014/07/29	8.19	66.98	52,830

<b>Design</b>	Design #1			
<b>Audit Notes:</b>				
<b>Version:</b>	<b>Phase:</b>	PLAN	<b>Tie On Depth:</b>	0.00
<b>Vertical Section:</b>	<b>Depth From (TVD) (usft)</b>	<b>+N/-S (usft)</b>	<b>+E/-W (usft)</b>	<b>Direction (°)</b>
	0.00	0.00	0.00	88.68

<b>Plan Sections</b>										
Measured Depth (usft)	Inclination (°)	Azimuth (°)	Vertical Depth (usft)	+N/-S (usft)	+E/-W (usft)	Dogleg Rate (°/100usft)	Build Rate (°/100usft)	Turn Rate (°/100usft)	TFO (°)	Target
0.00	0.00	0.00	0.00	0.00	0.00	0.00	0.00	0.00	0.00	
900.00	0.00	0.00	900.00	0.00	0.00	0.00	0.00	0.00	0.00	
1,391.92	9.84	331.45	1,389.51	37.01	-20.14	2.00	2.00	0.00	331.45	
4,789.41	9.84	331.45	4,737.03	546.93	-297.61	0.00	0.00	0.00	0.00	
5,281.33	0.00	0.00	5,226.54	583.94	-317.75	2.00	-2.00	0.00	180.00	
5,781.33	0.00	0.00	5,726.54	583.94	-317.75	0.00	0.00	0.00	0.00	
6,533.24	90.23	88.68	6,204.00	594.98	161.50	12.00	12.00	0.00	88.68	Anschutz State 5-62-35-1724BH2
16,276.06	90.23	88.68	6,165.00	819.46	9,901.65	0.00	0.00	0.00	0.00	Anschutz State 5-62-35-1724BH2

<b>Database:</b>	EDMDBBW	<b>Local Co-ordinate Reference:</b>	Well Anschutz State 5-62-35-1724BH2
<b>Company:</b>	Bill Barrett Corp.	<b>TVD Reference:</b>	WELL @ 4632.00usft (Original Well Elev)
<b>Project:</b>	Weld Co., CO	<b>MD Reference:</b>	WELL @ 4632.00usft (Original Well Elev)
<b>Site:</b>	Sec.35-T5N-R62W	<b>North Reference:</b>	True
<b>Well:</b>	Anschutz State 5-62-35-1724BH2	<b>Survey Calculation Method:</b>	Minimum Curvature
<b>Wellbore:</b>	Wellbore #1		
<b>Design:</b>	Design #1		

Planned Survey									
Measured Depth (usft)	Inclination (°)	Azimuth (°)	Vertical Depth (usft)	+N/-S (usft)	+E/-W (usft)	Vertical Section (usft)	Dogleg Rate (°/100usft)	Build Rate (°/100usft)	Turn Rate (°/100usft)
0.00	0.00	0.00	0.00	0.00	0.00	0.00	0.00	0.00	0.00
100.00	0.00	0.00	100.00	0.00	0.00	0.00	0.00	0.00	0.00
200.00	0.00	0.00	200.00	0.00	0.00	0.00	0.00	0.00	0.00
300.00	0.00	0.00	300.00	0.00	0.00	0.00	0.00	0.00	0.00
400.00	0.00	0.00	400.00	0.00	0.00	0.00	0.00	0.00	0.00
500.00	0.00	0.00	500.00	0.00	0.00	0.00	0.00	0.00	0.00
600.00	0.00	0.00	600.00	0.00	0.00	0.00	0.00	0.00	0.00
700.00	0.00	0.00	700.00	0.00	0.00	0.00	0.00	0.00	0.00
800.00	0.00	0.00	800.00	0.00	0.00	0.00	0.00	0.00	0.00
<b>Start Build 2.00</b>									
900.00	0.00	0.00	900.00	0.00	0.00	0.00	0.00	0.00	0.00
1,000.00	2.00	331.45	999.98	1.53	-0.83	-0.80	2.00	2.00	0.00
1,100.00	4.00	331.45	1,099.84	6.13	-3.34	-3.19	2.00	2.00	0.00
1,200.00	6.00	331.45	1,199.45	13.78	-7.50	-7.18	2.00	2.00	0.00
1,300.00	8.00	331.45	1,298.70	24.49	-13.33	-12.76	2.00	2.00	0.00
<b>Start 3397.49 hold at 1391.92 MD</b>									
1,391.92	9.84	331.45	1,389.51	37.01	-20.14	-19.28	2.00	2.00	0.00
1,400.00	9.84	331.45	1,397.47	38.22	-20.80	-19.91	0.00	0.00	0.00
1,500.00	9.84	331.45	1,496.00	53.23	-28.96	-27.73	0.00	0.00	0.00
1,600.00	9.84	331.45	1,594.53	68.24	-37.13	-35.55	0.00	0.00	0.00
1,700.00	9.84	331.45	1,693.06	83.25	-45.30	-43.37	0.00	0.00	0.00
1,800.00	9.84	331.45	1,791.58	98.26	-53.47	-51.19	0.00	0.00	0.00
1,900.00	9.84	331.45	1,890.11	113.26	-61.63	-59.01	0.00	0.00	0.00
2,000.00	9.84	331.45	1,988.64	128.27	-69.80	-66.83	0.00	0.00	0.00
2,100.00	9.84	331.45	2,087.17	143.28	-77.97	-74.65	0.00	0.00	0.00
2,200.00	9.84	331.45	2,185.70	158.29	-86.13	-82.46	0.00	0.00	0.00
2,300.00	9.84	331.45	2,284.23	173.30	-94.30	-90.28	0.00	0.00	0.00
2,400.00	9.84	331.45	2,382.76	188.31	-102.47	-98.10	0.00	0.00	0.00
2,500.00	9.84	331.45	2,481.29	203.32	-110.63	-105.92	0.00	0.00	0.00
2,600.00	9.84	331.45	2,579.82	218.33	-118.80	-113.74	0.00	0.00	0.00
2,700.00	9.84	331.45	2,678.35	233.34	-126.97	-121.56	0.00	0.00	0.00
2,800.00	9.84	331.45	2,776.88	248.34	-135.14	-129.38	0.00	0.00	0.00
2,900.00	9.84	331.45	2,875.41	263.35	-143.30	-137.20	0.00	0.00	0.00
3,000.00	9.84	331.45	2,973.94	278.36	-151.47	-145.02	0.00	0.00	0.00
3,100.00	9.84	331.45	3,072.47	293.37	-159.64	-152.84	0.00	0.00	0.00
3,200.00	9.84	331.45	3,171.00	308.38	-167.80	-160.66	0.00	0.00	0.00
3,300.00	9.84	331.45	3,269.52	323.39	-175.97	-168.48	0.00	0.00	0.00
3,400.00	9.84	331.45	3,368.05	338.40	-184.14	-176.29	0.00	0.00	0.00
3,500.00	9.84	331.45	3,466.58	353.41	-192.31	-184.11	0.00	0.00	0.00
3,600.00	9.84	331.45	3,565.11	368.42	-200.47	-191.93	0.00	0.00	0.00
3,700.00	9.84	331.45	3,663.64	383.42	-208.64	-199.75	0.00	0.00	0.00
3,800.00	9.84	331.45	3,762.17	398.43	-216.81	-207.57	0.00	0.00	0.00
3,900.00	9.84	331.45	3,860.70	413.44	-224.97	-215.39	0.00	0.00	0.00
4,000.00	9.84	331.45	3,959.23	428.45	-233.14	-223.21	0.00	0.00	0.00
4,100.00	9.84	331.45	4,057.76	443.46	-241.31	-231.03	0.00	0.00	0.00
4,200.00	9.84	331.45	4,156.29	458.47	-249.48	-238.85	0.00	0.00	0.00
4,300.00	9.84	331.45	4,254.82	473.48	-257.64	-246.67	0.00	0.00	0.00
<b>Sussex</b>									
4,332.66	9.84	331.45	4,287.00	478.38	-260.31	-249.22	0.00	0.00	0.00
4,400.00	9.84	331.45	4,353.35	488.49	-265.81	-254.49	0.00	0.00	0.00
4,500.00	9.84	331.45	4,451.88	503.50	-273.98	-262.30	0.00	0.00	0.00
4,600.00	9.84	331.45	4,550.41	518.50	-282.14	-270.12	0.00	0.00	0.00
4,700.00	9.84	331.45	4,648.94	533.51	-290.31	-277.94	0.00	0.00	0.00

<b>Database:</b>	EDMDBBW	<b>Local Co-ordinate Reference:</b>	Well Anschutz State 5-62-35-1724BH2
<b>Company:</b>	Bill Barrett Corp.	<b>TVD Reference:</b>	WELL @ 4632.00usft (Original Well Elev)
<b>Project:</b>	Weld Co., CO	<b>MD Reference:</b>	WELL @ 4632.00usft (Original Well Elev)
<b>Site:</b>	Sec.35-T5N-R62W	<b>North Reference:</b>	True
<b>Well:</b>	Anschutz State 5-62-35-1724BH2	<b>Survey Calculation Method:</b>	Minimum Curvature
<b>Wellbore:</b>	Wellbore #1		
<b>Design:</b>	Design #1		

Planned Survey									
Measured Depth (usft)	Inclination (°)	Azimuth (°)	Vertical Depth (usft)	+N/-S (usft)	+E/-W (usft)	Vertical Section (usft)	Dogleg Rate (°/100usft)	Build Rate (°/100usft)	Turn Rate (°/100usft)
<b>Start Drop -2.00</b>									
4,789.41	9.84	331.45	4,737.03	546.93	-297.61	-284.93	0.00	0.00	0.00
4,800.00	9.63	331.45	4,747.47	548.51	-298.47	-285.75	2.00	-2.00	0.00
<b>Shannon</b>									
4,874.60	8.13	331.45	4,821.17	558.62	-303.97	-291.02	2.00	-2.00	0.00
4,900.00	7.63	331.45	4,846.33	561.68	-305.64	-292.62	2.00	-2.00	0.00
5,000.00	5.63	331.45	4,945.66	571.82	-311.15	-297.90	2.00	-2.00	0.00
5,100.00	3.63	331.45	5,045.33	578.90	-315.01	-301.59	2.00	-2.00	0.00
5,200.00	1.63	331.45	5,145.22	582.93	-317.20	-303.69	2.00	-2.00	0.00
<b>Start 500.00 hold at 5281.33 MD</b>									
5,281.33	0.00	0.00	5,226.54	583.94	-317.75	-304.21	2.00	-2.00	0.00
5,300.00	0.00	0.00	5,245.21	583.94	-317.75	-304.21	0.00	0.00	0.00
5,400.00	0.00	0.00	5,345.21	583.94	-317.75	-304.21	0.00	0.00	0.00
5,500.00	0.00	0.00	5,445.21	583.94	-317.75	-304.21	0.00	0.00	0.00
5,600.00	0.00	0.00	5,545.21	583.94	-317.75	-304.21	0.00	0.00	0.00
5,700.00	0.00	0.00	5,645.21	583.94	-317.75	-304.21	0.00	0.00	0.00
<b>Start Build 12.00</b>									
5,781.33	0.00	0.00	5,726.54	583.94	-317.75	-304.21	0.00	0.00	0.00
5,800.00	2.24	88.68	5,745.20	583.95	-317.39	-303.85	12.00	12.00	0.00
5,825.00	5.24	88.68	5,770.15	583.99	-315.76	-302.22	12.00	12.00	0.00
5,850.00	8.24	88.68	5,794.97	584.05	-312.82	-299.28	12.00	12.00	0.00
5,875.00	11.24	88.68	5,819.61	584.15	-308.59	-295.06	12.00	12.00	0.00
5,900.00	14.24	88.68	5,843.99	584.28	-303.08	-289.54	12.00	12.00	0.00
5,925.00	17.24	88.68	5,868.05	584.43	-296.30	-282.76	12.00	12.00	0.00
5,950.00	20.24	88.68	5,891.72	584.62	-288.28	-274.73	12.00	12.00	0.00
5,975.00	23.24	88.68	5,914.94	584.83	-279.02	-265.47	12.00	12.00	0.00
6,000.00	26.24	88.68	5,937.64	585.07	-268.56	-255.01	12.00	12.00	0.00
<b>Sharon Springs</b>									
6,020.68	28.72	88.68	5,955.98	585.29	-259.02	-245.47	12.00	12.00	0.00
6,025.00	29.24	88.68	5,959.77	585.34	-256.93	-243.38	12.00	12.00	0.00
6,050.00	32.24	88.68	5,981.25	585.64	-244.15	-230.60	12.00	12.00	0.00
6,075.00	35.24	88.68	6,002.04	585.96	-230.27	-216.71	12.00	12.00	0.00
6,100.00	38.24	88.68	6,022.07	586.30	-215.33	-201.76	12.00	12.00	0.00
6,125.00	41.24	88.68	6,041.29	586.67	-199.35	-185.78	12.00	12.00	0.00
6,150.00	44.24	88.68	6,059.65	587.06	-182.39	-168.82	12.00	12.00	0.00
<b>Niobrara</b>									
6,167.02	46.28	88.68	6,071.63	587.34	-170.30	-156.73	12.00	12.00	0.00
6,175.00	47.24	88.68	6,077.10	587.47	-164.49	-150.91	12.00	12.00	0.00
6,200.00	50.24	88.68	6,093.58	587.91	-145.70	-132.12	12.00	12.00	0.00
6,225.00	53.24	88.68	6,109.06	588.36	-126.08	-112.49	12.00	12.00	0.00
<b>A Chalk</b>									
6,239.23	54.95	88.68	6,117.41	588.62	-114.56	-100.97	12.00	12.00	0.00
6,250.00	56.24	88.68	6,123.49	588.83	-105.68	-92.08	12.00	12.00	0.00
<b>A Marl</b>									
6,260.69	57.52	88.68	6,129.33	589.03	-96.72	-83.13	12.00	12.00	0.00
6,275.00	59.24	88.68	6,136.83	589.31	-84.54	-70.94	12.00	12.00	0.00
6,300.00	62.24	88.68	6,149.05	589.82	-62.74	-49.14	12.00	12.00	0.00
6,325.00	65.24	88.68	6,160.11	590.33	-40.33	-26.72	12.00	12.00	0.00
6,350.00	68.24	88.68	6,169.98	590.86	-17.37	-3.75	12.00	12.00	0.00
<b>Top B2 Chalk</b>									
6,369.80	70.62	88.68	6,176.94	591.29	1.16	14.78	12.00	12.00	0.00
6,375.00	71.24	88.68	6,178.64	591.40	6.07	19.70	12.00	12.00	0.00
6,400.00	74.24	88.68	6,186.06	591.95	29.94	43.57	12.00	12.00	0.00

<b>Database:</b>	EDMDBBW	<b>Local Co-ordinate Reference:</b>	Well Anschutz State 5-62-35-1724BH2
<b>Company:</b>	Bill Barrett Corp.	<b>TVD Reference:</b>	WELL @ 4632.00usft (Original Well Elev)
<b>Project:</b>	Weld Co., CO	<b>MD Reference:</b>	WELL @ 4632.00usft (Original Well Elev)
<b>Site:</b>	Sec.35-T5N-R62W	<b>North Reference:</b>	True
<b>Well:</b>	Anschutz State 5-62-35-1724BH2	<b>Survey Calculation Method:</b>	Minimum Curvature
<b>Wellbore:</b>	Wellbore #1		
<b>Design:</b>	Design #1		

Planned Survey									
Measured Depth (usft)	Inclination (°)	Azimuth (°)	Vertical Depth (usft)	+N/-S (usft)	+E/-W (usft)	Vertical Section (usft)	Dogleg Rate (°/100usft)	Build Rate (°/100usft)	Turn Rate (°/100usft)
6,425.00	77.24	88.68	6,192.21	592.51	54.16	67.79	12.00	12.00	0.00
6,450.00	80.24	88.68	6,197.09	593.08	78.67	92.31	12.00	12.00	0.00
6,475.00	83.24	88.68	6,200.69	593.65	103.40	117.05	12.00	12.00	0.00
6,500.00	86.24	88.68	6,202.98	594.22	128.29	141.94	12.00	12.00	0.00
6,525.00	89.24	88.68	6,203.96	594.79	153.26	166.92	12.00	12.00	0.00
<b>Start 9742.82 hold at 6533.24 MD - 7" Csg.</b>									
6,533.24	90.23	88.68	6,204.00	594.98	161.49	175.16	12.00	12.00	0.00
6,600.00	90.23	88.68	6,203.73	596.52	228.24	241.92	0.00	0.00	0.00
6,700.00	90.23	88.68	6,203.33	598.83	328.21	341.92	0.00	0.00	0.00
6,800.00	90.23	88.68	6,202.93	601.13	428.18	441.92	0.00	0.00	0.00
6,900.00	90.23	88.68	6,202.53	603.43	528.15	541.91	0.00	0.00	0.00
7,000.00	90.23	88.68	6,202.13	605.74	628.13	641.91	0.00	0.00	0.00
7,100.00	90.23	88.68	6,201.73	608.04	728.10	741.91	0.00	0.00	0.00
7,200.00	90.23	88.68	6,201.33	610.35	828.07	841.91	0.00	0.00	0.00
7,300.00	90.23	88.68	6,200.93	612.65	928.04	941.91	0.00	0.00	0.00
7,400.00	90.23	88.68	6,200.53	614.95	1,028.02	1,041.91	0.00	0.00	0.00
7,500.00	90.23	88.68	6,200.13	617.26	1,127.99	1,141.91	0.00	0.00	0.00
7,600.00	90.23	88.68	6,199.73	619.56	1,227.96	1,241.91	0.00	0.00	0.00
7,700.00	90.23	88.68	6,199.33	621.87	1,327.94	1,341.91	0.00	0.00	0.00
7,800.00	90.23	88.68	6,198.93	624.17	1,427.91	1,441.91	0.00	0.00	0.00
7,900.00	90.23	88.68	6,198.53	626.47	1,527.88	1,541.91	0.00	0.00	0.00
8,000.00	90.23	88.68	6,198.13	628.78	1,627.85	1,641.91	0.00	0.00	0.00
8,100.00	90.23	88.68	6,197.73	631.08	1,727.83	1,741.91	0.00	0.00	0.00
8,200.00	90.23	88.68	6,197.33	633.39	1,827.80	1,841.90	0.00	0.00	0.00
8,300.00	90.23	88.68	6,196.93	635.69	1,927.77	1,941.90	0.00	0.00	0.00
8,400.00	90.23	88.68	6,196.53	637.99	2,027.74	2,041.90	0.00	0.00	0.00
8,500.00	90.23	88.68	6,196.13	640.30	2,127.72	2,141.90	0.00	0.00	0.00
8,600.00	90.23	88.68	6,195.73	642.60	2,227.69	2,241.90	0.00	0.00	0.00
8,700.00	90.23	88.68	6,195.33	644.91	2,327.66	2,341.90	0.00	0.00	0.00
8,800.00	90.23	88.68	6,194.93	647.21	2,427.63	2,441.90	0.00	0.00	0.00
8,900.00	90.23	88.68	6,194.53	649.51	2,527.61	2,541.90	0.00	0.00	0.00
9,000.00	90.23	88.68	6,194.13	651.82	2,627.58	2,641.90	0.00	0.00	0.00
9,100.00	90.23	88.68	6,193.73	654.12	2,727.55	2,741.90	0.00	0.00	0.00
9,200.00	90.23	88.68	6,193.33	656.43	2,827.53	2,841.90	0.00	0.00	0.00
9,300.00	90.23	88.68	6,192.93	658.73	2,927.50	2,941.90	0.00	0.00	0.00
9,400.00	90.23	88.68	6,192.53	661.03	3,027.47	3,041.89	0.00	0.00	0.00
9,500.00	90.23	88.68	6,192.13	663.34	3,127.44	3,141.89	0.00	0.00	0.00
9,600.00	90.23	88.68	6,191.73	665.64	3,227.42	3,241.89	0.00	0.00	0.00
9,700.00	90.23	88.68	6,191.32	667.95	3,327.39	3,341.89	0.00	0.00	0.00
9,800.00	90.23	88.68	6,190.92	670.25	3,427.36	3,441.89	0.00	0.00	0.00
9,900.00	90.23	88.68	6,190.52	672.55	3,527.33	3,541.89	0.00	0.00	0.00
10,000.00	90.23	88.68	6,190.12	674.86	3,627.31	3,641.89	0.00	0.00	0.00
10,100.00	90.23	88.68	6,189.72	677.16	3,727.28	3,741.89	0.00	0.00	0.00
10,200.00	90.23	88.68	6,189.32	679.47	3,827.25	3,841.89	0.00	0.00	0.00
10,300.00	90.23	88.68	6,188.92	681.77	3,927.22	3,941.89	0.00	0.00	0.00
10,400.00	90.23	88.68	6,188.52	684.07	4,027.20	4,041.89	0.00	0.00	0.00
10,500.00	90.23	88.68	6,188.12	686.38	4,127.17	4,141.89	0.00	0.00	0.00
10,600.00	90.23	88.68	6,187.72	688.68	4,227.14	4,241.89	0.00	0.00	0.00
10,700.00	90.23	88.68	6,187.32	690.99	4,327.11	4,341.88	0.00	0.00	0.00
10,800.00	90.23	88.68	6,186.92	693.29	4,427.09	4,441.88	0.00	0.00	0.00
10,900.00	90.23	88.68	6,186.52	695.59	4,527.06	4,541.88	0.00	0.00	0.00
11,000.00	90.23	88.68	6,186.12	697.90	4,627.03	4,641.88	0.00	0.00	0.00
11,100.00	90.23	88.68	6,185.72	700.20	4,727.01	4,741.88	0.00	0.00	0.00

<b>Database:</b>	EDMDBBW	<b>Local Co-ordinate Reference:</b>	Well Anschutz State 5-62-35-1724BH2
<b>Company:</b>	Bill Barrett Corp.	<b>TVD Reference:</b>	WELL @ 4632.00usft (Original Well Elev)
<b>Project:</b>	Weld Co., CO	<b>MD Reference:</b>	WELL @ 4632.00usft (Original Well Elev)
<b>Site:</b>	Sec.35-T5N-R62W	<b>North Reference:</b>	True
<b>Well:</b>	Anschutz State 5-62-35-1724BH2	<b>Survey Calculation Method:</b>	Minimum Curvature
<b>Wellbore:</b>	Wellbore #1		
<b>Design:</b>	Design #1		

Planned Survey									
Measured Depth (usft)	Inclination (°)	Azimuth (°)	Vertical Depth (usft)	+N/-S (usft)	+E/-W (usft)	Vertical Section (usft)	Dogleg Rate (°/100usft)	Build Rate (°/100usft)	Turn Rate (°/100usft)
11,200.00	90.23	88.68	6,185.32	702.51	4,826.98	4,841.88	0.00	0.00	0.00
11,300.00	90.23	88.68	6,184.92	704.81	4,926.95	4,941.88	0.00	0.00	0.00
11,400.00	90.23	88.68	6,184.52	707.11	5,026.92	5,041.88	0.00	0.00	0.00
11,500.00	90.23	88.68	6,184.12	709.42	5,126.90	5,141.88	0.00	0.00	0.00
11,600.00	90.23	88.68	6,183.72	711.72	5,226.87	5,241.88	0.00	0.00	0.00
11,700.00	90.23	88.68	6,183.32	714.03	5,326.84	5,341.88	0.00	0.00	0.00
11,800.00	90.23	88.68	6,182.92	716.33	5,426.81	5,441.88	0.00	0.00	0.00
11,900.00	90.23	88.68	6,182.52	718.63	5,526.79	5,541.87	0.00	0.00	0.00
12,000.00	90.23	88.68	6,182.12	720.94	5,626.76	5,641.87	0.00	0.00	0.00
12,100.00	90.23	88.68	6,181.72	723.24	5,726.73	5,741.87	0.00	0.00	0.00
12,200.00	90.23	88.68	6,181.32	725.55	5,826.70	5,841.87	0.00	0.00	0.00
12,300.00	90.23	88.68	6,180.92	727.85	5,926.68	5,941.87	0.00	0.00	0.00
12,400.00	90.23	88.68	6,180.52	730.15	6,026.65	6,041.87	0.00	0.00	0.00
12,500.00	90.23	88.68	6,180.12	732.46	6,126.62	6,141.87	0.00	0.00	0.00
12,600.00	90.23	88.68	6,179.72	734.76	6,226.60	6,241.87	0.00	0.00	0.00
12,700.00	90.23	88.68	6,179.32	737.07	6,326.57	6,341.87	0.00	0.00	0.00
12,800.00	90.23	88.68	6,178.92	739.37	6,426.54	6,441.87	0.00	0.00	0.00
12,900.00	90.23	88.68	6,178.52	741.67	6,526.51	6,541.87	0.00	0.00	0.00
13,000.00	90.23	88.68	6,178.12	743.98	6,626.49	6,641.87	0.00	0.00	0.00
13,100.00	90.23	88.68	6,177.71	746.28	6,726.46	6,741.87	0.00	0.00	0.00
13,200.00	90.23	88.68	6,177.31	748.59	6,826.43	6,841.86	0.00	0.00	0.00
13,300.00	90.23	88.68	6,176.91	750.89	6,926.40	6,941.86	0.00	0.00	0.00
13,400.00	90.23	88.68	6,176.51	753.19	7,026.38	7,041.86	0.00	0.00	0.00
13,500.00	90.23	88.68	6,176.11	755.50	7,126.35	7,141.86	0.00	0.00	0.00
13,600.00	90.23	88.68	6,175.71	757.80	7,226.32	7,241.86	0.00	0.00	0.00
13,700.00	90.23	88.68	6,175.31	760.11	7,326.29	7,341.86	0.00	0.00	0.00
13,800.00	90.23	88.68	6,174.91	762.41	7,426.27	7,441.86	0.00	0.00	0.00
13,900.00	90.23	88.68	6,174.51	764.71	7,526.24	7,541.86	0.00	0.00	0.00
14,000.00	90.23	88.68	6,174.11	767.02	7,626.21	7,641.86	0.00	0.00	0.00
14,100.00	90.23	88.68	6,173.71	769.32	7,726.19	7,741.86	0.00	0.00	0.00
14,200.00	90.23	88.68	6,173.31	771.63	7,826.16	7,841.86	0.00	0.00	0.00
14,300.00	90.23	88.68	6,172.91	773.93	7,926.13	7,941.86	0.00	0.00	0.00
14,400.00	90.23	88.68	6,172.51	776.23	8,026.10	8,041.85	0.00	0.00	0.00
14,500.00	90.23	88.68	6,172.11	778.54	8,126.08	8,141.85	0.00	0.00	0.00
14,600.00	90.23	88.68	6,171.71	780.84	8,226.05	8,241.85	0.00	0.00	0.00
14,700.00	90.23	88.68	6,171.31	783.15	8,326.02	8,341.85	0.00	0.00	0.00
14,800.00	90.23	88.68	6,170.91	785.45	8,425.99	8,441.85	0.00	0.00	0.00
14,900.00	90.23	88.68	6,170.51	787.75	8,525.97	8,541.85	0.00	0.00	0.00
15,000.00	90.23	88.68	6,170.11	790.06	8,625.94	8,641.85	0.00	0.00	0.00
15,100.00	90.23	88.68	6,169.71	792.36	8,725.91	8,741.85	0.00	0.00	0.00
15,200.00	90.23	88.68	6,169.31	794.67	8,825.88	8,841.85	0.00	0.00	0.00
15,300.00	90.23	88.68	6,168.91	796.97	8,925.86	8,941.85	0.00	0.00	0.00
15,400.00	90.23	88.68	6,168.51	799.27	9,025.83	9,041.85	0.00	0.00	0.00
15,500.00	90.23	88.68	6,168.11	801.58	9,125.80	9,141.85	0.00	0.00	0.00
15,600.00	90.23	88.68	6,167.71	803.88	9,225.77	9,241.85	0.00	0.00	0.00
15,700.00	90.23	88.68	6,167.31	806.19	9,325.75	9,341.84	0.00	0.00	0.00
15,800.00	90.23	88.68	6,166.91	808.49	9,425.72	9,441.84	0.00	0.00	0.00
15,900.00	90.23	88.68	6,166.51	810.79	9,525.69	9,541.84	0.00	0.00	0.00
16,000.00	90.23	88.68	6,166.11	813.10	9,625.67	9,641.84	0.00	0.00	0.00
16,100.00	90.23	88.68	6,165.71	815.40	9,725.64	9,741.84	0.00	0.00	0.00
16,200.00	90.23	88.68	6,165.31	817.71	9,825.61	9,841.84	0.00	0.00	0.00
TD at 16276.06									
16,276.06	90.23	88.68	6,165.00	819.46	9,901.65	9,917.90	0.00	0.00	0.00



<b>Database:</b>	EDMDBBW	<b>Local Co-ordinate Reference:</b>	Well Anschutz State 5-62-35-1724BH2
<b>Company:</b>	Bill Barrett Corp.	<b>TVD Reference:</b>	WELL @ 4632.00usft (Original Well Elev)
<b>Project:</b>	Weld Co., CO	<b>MD Reference:</b>	WELL @ 4632.00usft (Original Well Elev)
<b>Site:</b>	Sec.35-T5N-R62W	<b>North Reference:</b>	True
<b>Well:</b>	Anschutz State 5-62-35-1724BH2	<b>Survey Calculation Method:</b>	Minimum Curvature
<b>Wellbore:</b>	Wellbore #1		
<b>Design:</b>	Design #1		

Design Targets									
Target Name	Dip Angle	Dip Dir.	TVD	+N/-S	+E/-W	Northing	Easting	Latitude	Longitude
- hit/miss target	(°)	(°)	(usft)	(usft)	(usft)	(usft)	(usft)		
- Shape									
Anschutz State 5-62-35-	0.00	0.00	6,165.00	819.46	9,901.65	1,376,239.900	3,344,629.601	40° 21' 34.499 N	104° 15' 47.858 W
- plan hits target center									
- Point									

Casing Points					
Measured Depth	Vertical Depth	Name		Casing Diameter	Hole Diameter
(usft)	(usft)			(")	(")
6,533.24	6,204.00	7" Csg.		7	8-3/4

Formations						
Measured Depth	Vertical Depth	Name		Lithology	Dip	Dip Direction
(usft)	(usft)				(°)	(°)
4,332.66	4,286.00	Sussex			-0.23	88.68
4,874.60	4,820.00	Shannon			-0.23	88.68
6,020.68	5,955.00	Sharon Springs			-0.23	88.64
6,167.02	6,071.00	Niobrara			-0.23	88.68
6,239.23	6,117.00	A Chalk			-0.23	88.68
6,260.69	6,129.00	A Marl			-0.23	88.68
6,369.80	6,177.00	Top B2 Chalk			-0.23	88.68

Plan Annotations					
Measured Depth	Vertical Depth	Local Coordinates		Comment	
(usft)	(usft)	+N/-S (usft)	+E/-W (usft)		
900.00	900.00	0.00	0.00	Start Build 2.00	
1,391.92	1,389.51	37.01	-20.14	Start 3397.49 hold at 1391.92 MD	
4,789.41	4,737.03	546.93	-297.61	Start Drop -2.00	
5,281.33	5,226.54	583.94	-317.75	Start 500.00 hold at 5281.33 MD	
5,781.33	5,726.54	583.94	-317.75	Start Build 12.00	
6,533.24	6,204.00	594.98	161.50	Start 9742.82 hold at 6533.24 MD	
16,276.06	6,165.00	819.46	9,901.65	TD at 16276.06	