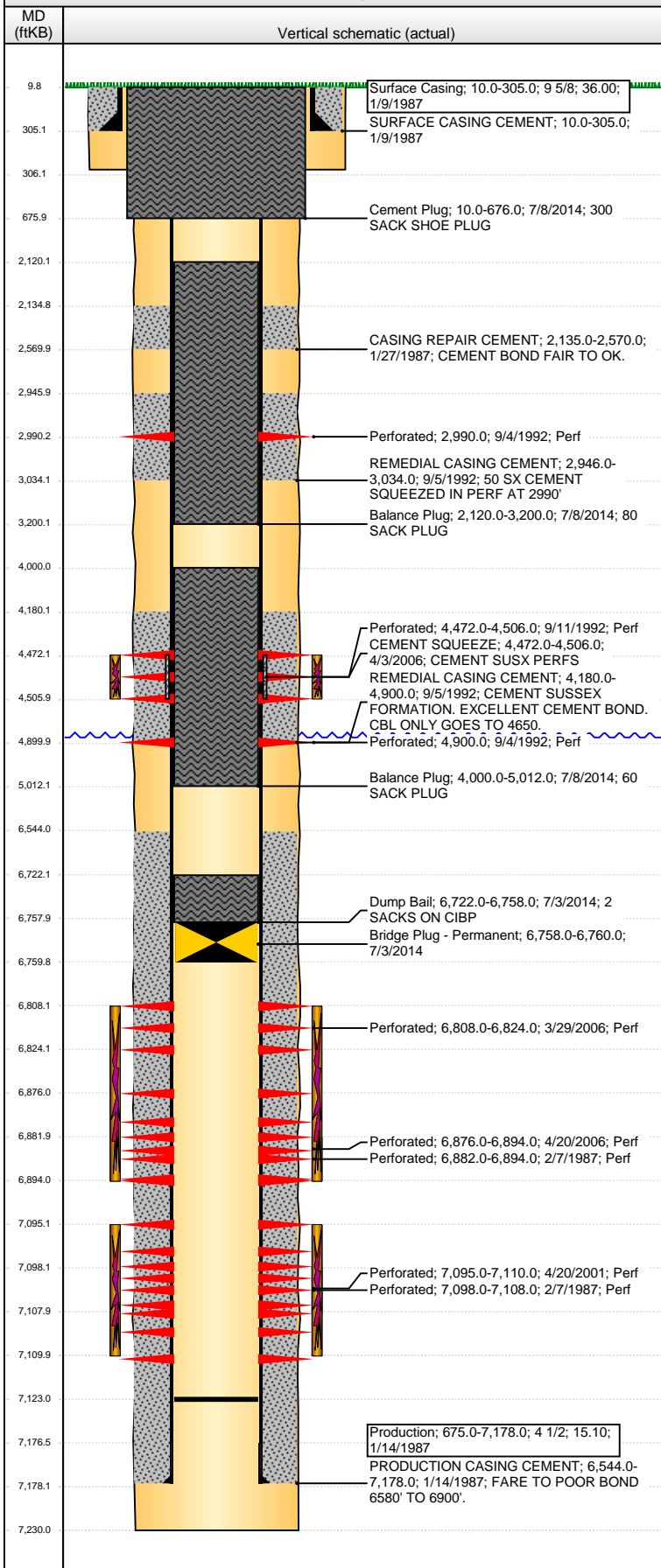


Well Name: GERRITY STATE G36-09

VERTICAL - ORIGINAL HOLE, 7/30/2014 2:11:06 PM



Well Header

API 05-123-13292	Business Unit DJ BASIN	District 15	Well Config VERTICAL
Original KB Elevation (ft) 4,852.00	KB - GL / MSL (ftKB) 10.00	Spud Date 1/9/1987	P & A Date 7/9/2014

Comment

Csg rpr 1/87, Cmt ssx 9/92 w/350 sx @ 2990 & 4900,tight 4944
CBL DOES NOT SHOW TOP AND BOTTOMS OF CEMENT SO CEMENT DEPTHS ARE ASSUMED. RUN CBL TO CONFIRM.

Directions To Well

RD 49 & 40, S 5/10, W 1/10, S INTO.

Congressional Location

Quarter 1	Quarter 2	Quarter 3	Quarter 4	Section	Township	Twtnsh N...	Range	Rng E/W Dir
		NE	SE	36	4	N	65	W

Bottom Hole Location

North-South Distance (ft)	From N or S Line	East-West Distance (ft)	From E or W Line

Plug Back Total Depths

Date	Depth (ftKB)	Method	Com
1/14/1987	7,178.0		
4/10/2008	7,123.0	TAG	C/O & LAND TBG

Wellbore Sections

Section Des	Size (in)	Act Top, MD (ftKB)	Act Btm, MD (ftKB)
SURFACE	12 1/4	10.0	306.0
PRODUCTION	7 7/8	306.0	7,230.0

Zone Statuses

Zone Name	Status Date	Status	Job
SUSSEX	9/30/1992	PR	RECOMPLETION, 9/12/1992 00:00
SUSSEX	4/3/2006	PR	RE-FRAC, 2/27/2006 00:00
SUSSEX	7/9/2014	P&A	ABANDON WELL, 7/2/2014 13:00
CODELL	2/12/1987	PR	DRILLING/COMPLETION - ORIGINAL, 1/9/1987 00:00
CODELL	4/26/2001	PR	RE-FRAC, 4/18/2001 00:00
CODELL	5/15/2008	PR	TRI-FRAC, 3/18/2008 06:00
CODELL	7/9/2014	P&A	ABANDON WELL, 7/2/2014 13:00
NIOBRARA	2/12/1987	PR	DRILLING/COMPLETION - ORIGINAL, 1/9/1987 00:00
NIOBRARA	8/29/2006	PR	RE-FRAC, 2/27/2006 00:00
NIOBRARA	7/9/2014	P&A	ABANDON WELL, 7/2/2014 13:00

Casing Strings

Surface Casing, 305.0ftKB

Casing Description	Run Date	OD (in)	Wt/Len (l...)	Grade	Top, MD (ft...)	MD (ftKB)
Surface Casing	1/9/1987	9 5/8	36.00		10.0	305.0

Production, 7,178.0ftKB

Casing Description	Run Date	OD (in)	Wt/Len (l...)	Grade	Top, MD (ft...)	MD (ftKB)
Production	1/14/1987	4 1/2	15.10		10.0	7,178.0

Cement

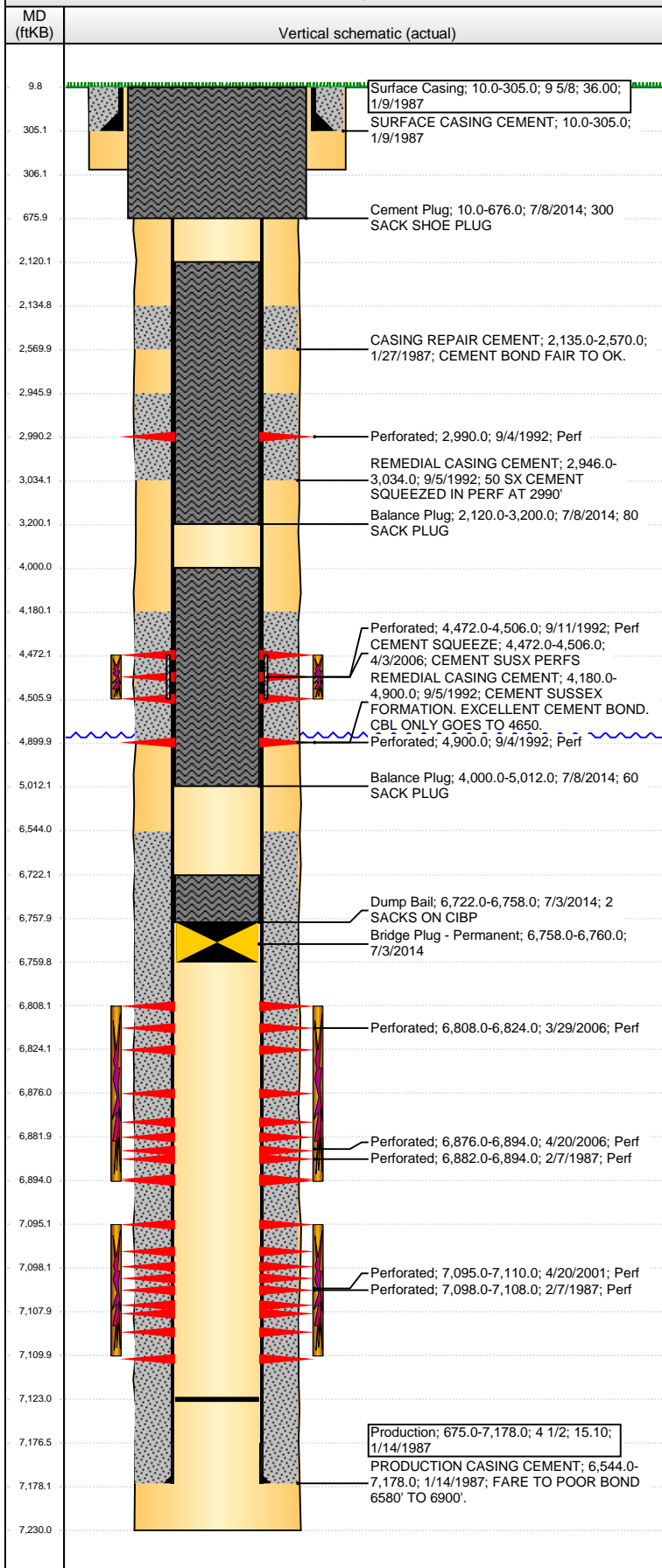
Description	Top Depth (ftKB)	Bottom Depth (ftKB)
SURFACE CASING CEMENT	10.0	305.0
PRODUCTION CASING CEMENT	6,544.0	7,178.0
CASING REPAIR CEMENT	2,135.0	2,570.0
REMEDIAL CASING CEMENT	2,946.0	3,034.0
REMEDIAL CASING CEMENT	4,180.0	4,900.0
CEMENT SQUEEZE	4,472.0	4,506.0
Dump Bail	6,722.0	6,758.0
Balance Plug	4,000.0	5,012.0
Balance Plug	2,120.0	3,200.0
Cement Plug	10.0	676.0

Tubing Components

Item Des	OD (in)	Wt (lb/ft)	Grade	Jts	Len (ft)	Btm (ftKB)	Btm (TVD) (ftKB)

Well Name: GERRITY STATE G36-09

VERTICAL - ORIGINAL HOLE, 7/30/2014 2:11:09 PM



Perforation Data					
Zone	Brnch/St g	Entered Shot Total	Top (ftKB)	Btm (ftKB)	Date
SUSSEX, ORIGINAL HOLE		1	2,990.00	2,990.00	9/4/1992
		20	4,472.00	4,506.00	9/11/1992
		1	4,900.00	4,900.00	9/4/1992
NIOBRARA, ORIGINAL HOLE	B	96	6,808.00	6,824.00	3/29/2006
NIOBRARA, ORIGINAL HOLE		108	6,876.00	6,894.00	4/20/2006
NIOBRARA, ORIGINAL HOLE		4	6,882.00	6,894.00	2/7/1987
CODELL, ORIGINAL HOLE		60	7,095.00	7,110.00	4/20/2001
CODELL, ORIGINAL HOLE		4	7,098.00	7,108.00	2/7/1987

Stimulations & Treatments			
Date	Zone	Primary Job Type	
2/11/1987	NIOBRARA-CODELL, ORIGINAL HOLE	DRILLING/COMPLETION - ORIGINAL	
Technical Result	Tech Result Details		Tech Result Note
Failure	Screen-out		
Comment			

Date	Zone	Primary Job Type	
9/12/1992	SUSSEX, ORIGINAL HOLE	RECOMPLETION	
Technical Result		Tech Result Details	Tech Result Note
Comment			

Date	Zone	Primary Job Type	
4/23/2001	CODELL, ORIGINAL HOLE	RE-FRAC	
Technical Result		Tech Result Details	Tech Result Note
Comment			

Date	Zone	Primary Job Type	
4/20/2006	NIOBRARA, ORIGINAL HOLE	RE-FRAC	
Technical Result		Tech Result Details	Tech Result Note
Comment			

Date	Zone	Primary Job Type	
4/8/2008	CODELL, ORIGINAL HOLE	TRI-FRAC	
Technical Result		Tech Result Details	Tech Result Note
Success		According to Plan	
Comment			

THE TREATMENT WENT WELL WITH THE LOSS OF A PUMP IN 4.0 PPG SAND THE ONLY EQUIPMENT ISSUE. ISIP = 3478 PSI, 5-MIN = 2578 PSI, ISIP = 3874 PSI, 5-MIN = 3600 PSI. THE TREATMENT TURNED POSITIVE IN THE SAND RAMP (NOLTE = 0.258).

Other In Hole				
Run Date	Des	OD (in)	Top (ftKB)	Btm (ftKB)
7/3/2014	Bridge Plug - Permanent	3.99	6,758.0	6,760.0

Logs			
Date	Type	Top, MD (ftKB)	Btm, MD (ftKB)
1/13/1987	Compensated Neutron	4,335.0	7,246.0
2/4/1987	Cement Bond	1,900.0	7,175.0
9/5/1992	Cement Bond	4,335.0	7,246.0
3/2/2011	GYRO	10.0	7,000.0