

SOUTHWESTERN ENERGY PRODUCTION COMPANY
KLINE #21-23
LOCATED IN MOFFAT COUNTY, COLORADO
SECTION 23, T7N, R91W, 6th P.M.

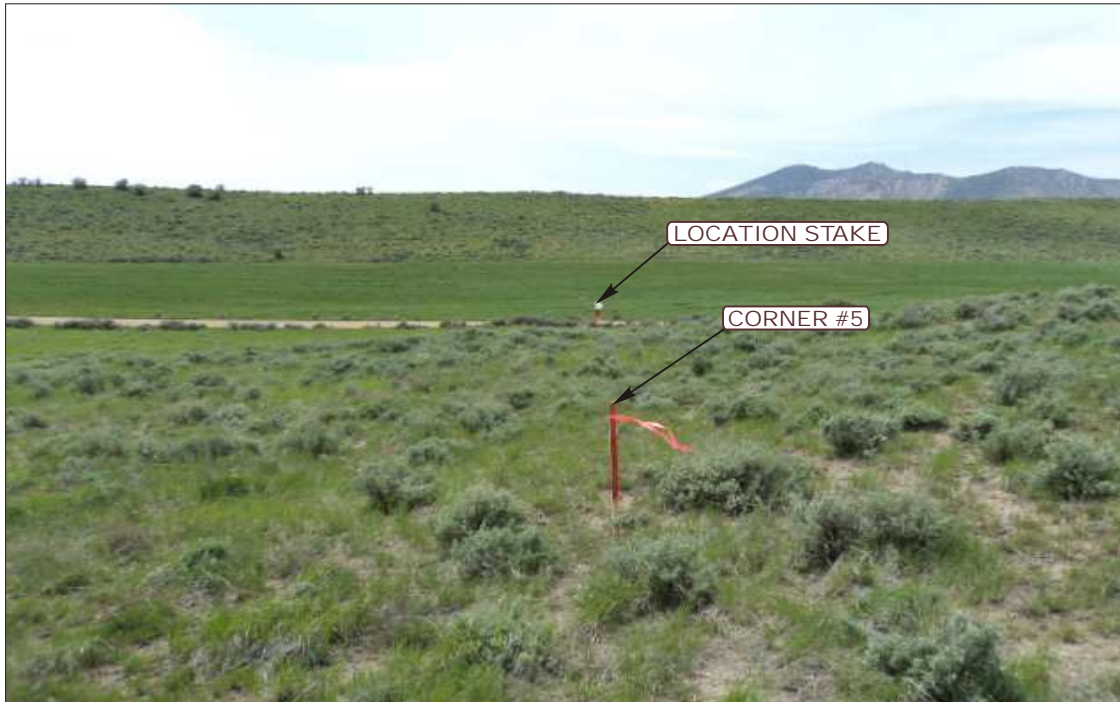


PHOTO: VIEW FROM CORNER #5 TO LOCATION STAKE

CAMERA ANGLE: NORTHWESTERLY



PHOTO: VIEW FROM BEGINNING OF PROPOSED ACCESS

CAMERA ANGLE: EASTERLY



- Since 1964 -

U&LS Uintah Engineering & Land Surveying
85 South 200 East Vernal, Utah 84078
(435) 789-1017 * FAX (435) 789-1813

LOCATION PHOTOS

06 **16** **11**
MONTH DAY YEAR

TAKEN BY: G.M.

DRAWN BY: S.F.

REV: 05-13-14 J.M.F.

PHOTO
P1

SOUTHWESTERN ENERGY PRODUCTION COMPANY
KLINE #21-23
LOCATED IN MOFFAT COUNTY, COLORADO
SECTION 23, T7N, R91W, 6th P.M.



PHOTO: VIEW OF LOCATION STAKE

CAMERA ANGLE: NORTHERLY



PHOTO: VIEW OF LOCATION STAKE

CAMERA ANGLE: EASTERLY



- Since 1964 -

UELS

Uintah Engineering & Land Surveying
85 South 200 East Vernal, Utah 84078
(435) 789-1017 * FAX (435) 789-1813

LOCATION PHOTOS

06 **16** **11**
MONTH DAY YEAR

TAKEN BY: G.M.

DRAWN BY: S.F.

REV: 05-13-14 J.M.F.

PHOTO
P2

SOUTHWESTERN ENERGY PRODUCTION COMPANY
KLINE #21-23
LOCATED IN MOFFAT COUNTY, COLORADO
SECTION 23, T7N, R91W, 6th P.M.

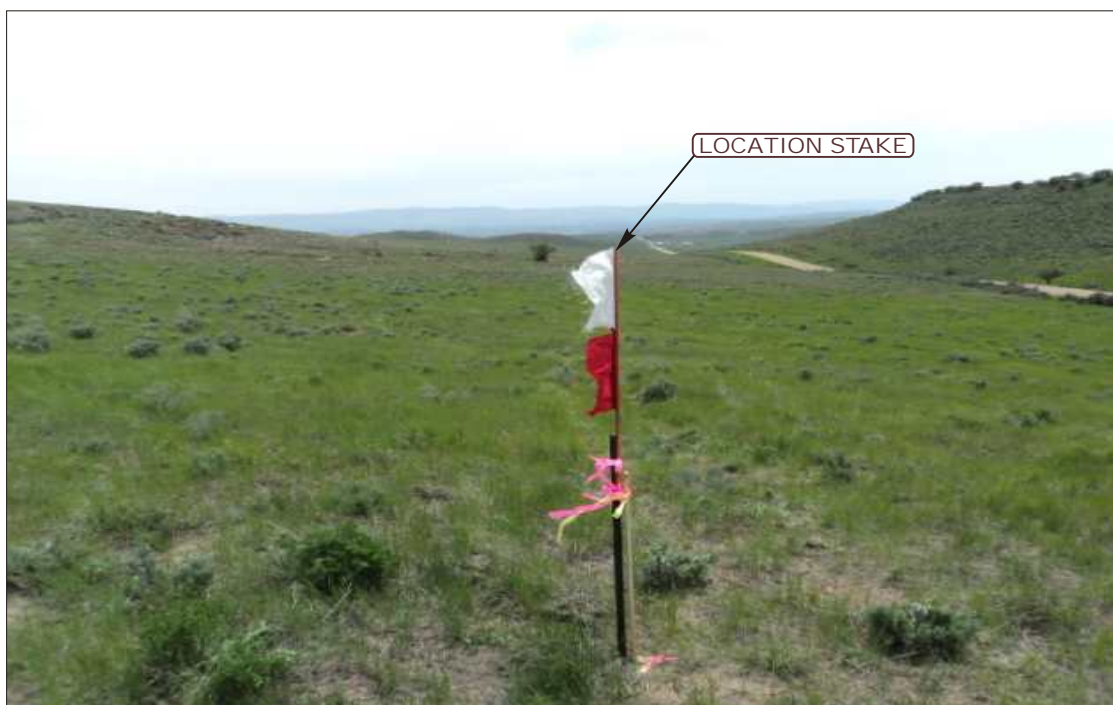


PHOTO: VIEW OF LOCATION STAKE

CAMERA ANGLE: SOUTHERLY



PHOTO: VIEW OF LOCATION STAKE

CAMERA ANGLE: WESTERLY



- Since 1964 -

UELS

Uintah Engineering & Land Surveying
85 South 200 East Vernal, Utah 84078
(435) 789-1017 * FAX (435) 789-1813

LOCATION PHOTOS

06 **16** **11**
MONTH DAY YEAR

TAKEN BY: G.M.

DRAWN BY: S.F.

REV: 05-13-14 J.M.F.

PHOTO
P3