

FIGURE #5

SURVEYED BY: GLEN MCELROY

DATE: 06-28-11

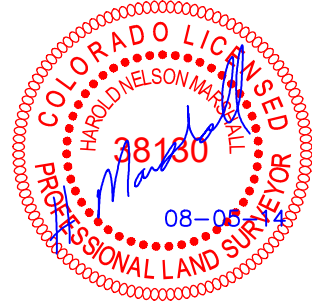
DRAWN BY: M.D.

REVISÉ: 11-18-11 T.B.

REVISÉ: 05-13-14 T.B.

REVISÉ: 07-21-14 M.O.B.

REVISÉD: 08-05-14 M.O.B.



SOUTHWESTERN ENERGY PRODUCTION COMPANY

FIGURE #5A

LOCATION DRAWING DETAIL FOR

KLINE #21-23

SECTION 23, T7N, R91W, 6th. P.M.

714' FNL 1849' FWL

SCALE: 1" = 200'

DATE SURVEYED: 07-17-14

SURVEYED BY: JOHN FLOYD

DATE DRAWN: 06-27-11

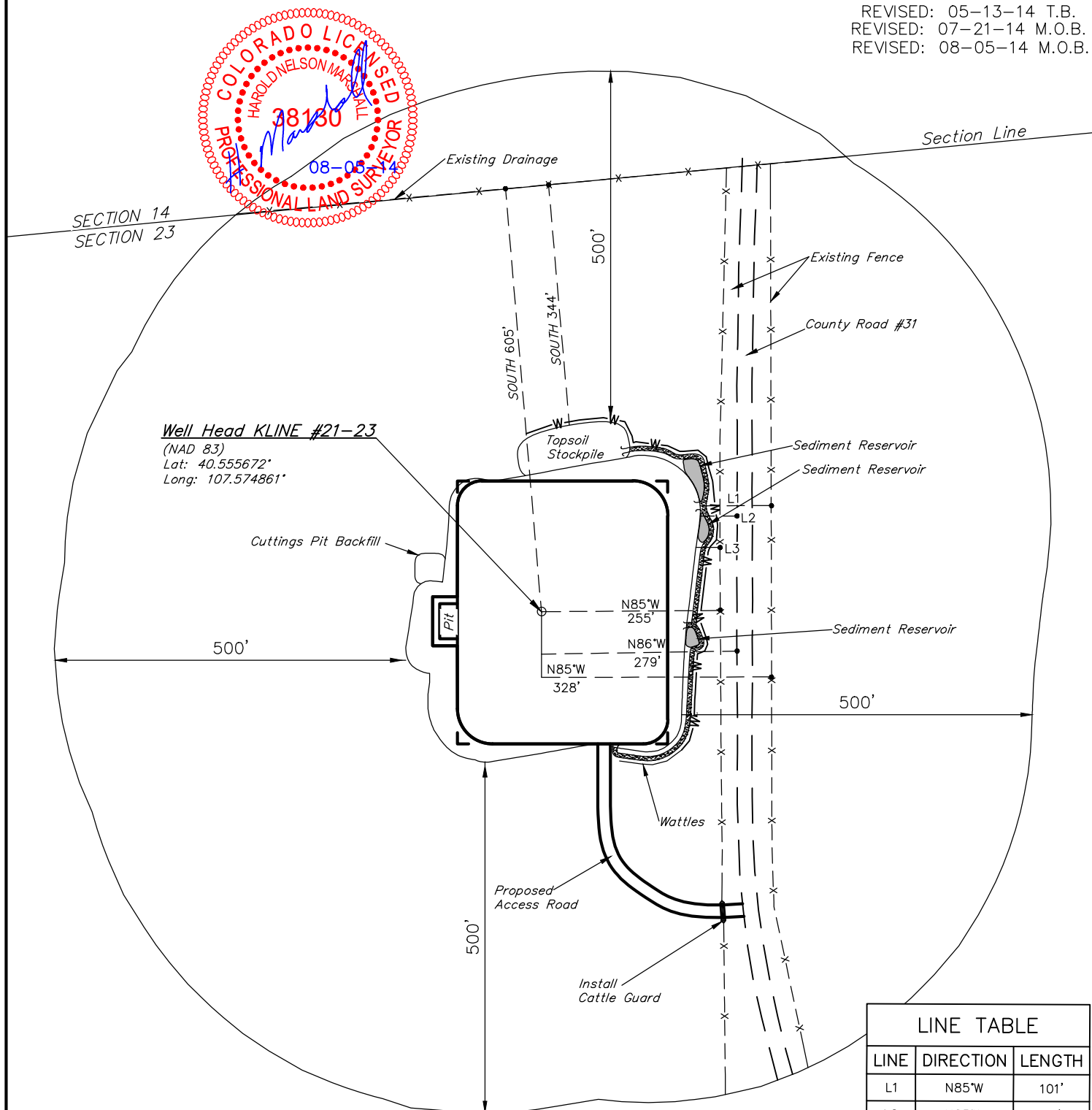
DRAWN BY: M.D.

REVISED: 11-18-11 T.B.

REVISED: 05-13-14 T.B.

REVISED: 07-21-14 M.O.B.

REVISED: 08-05-14 M.O.B.



Well Head KLINE #21-23

(NAD 83)

Lat: 40.555672°

Long: 107.574861°

Cuttings Pit Backfill

500'

500'

Proposed Access Road

N85°W 255'

N86°W 279'

N85°W 328'

Wattles

Install Cattle Guard

County Road #31

Existing Fence

Existing Drainage

SOUTH 605'

SOUTH 344'

500'

Section Line

SECTION 14
SECTION 23

LINE TABLE

LINE	DIRECTION	LENGTH
L1	N85°W	101'
L2	N85°W	53'
L3	N85°W	34'

UINTAH ENGINEERING & LAND SURVEYING

85 So. 200 East * Vernal, Utah 84078 * (435) 789-1017