

SOUTHWESTERN ENERGY PRODUCTION COMPANY

CONSTRUCTION LAYOUT FOR

KLINE #21-23

SECTION 23, T7N, R91W, 6th. P.M.

714' FNL 1849' FWL

FIGURE #1

SCALE: 1" = 60'

DATE: 06-27-11

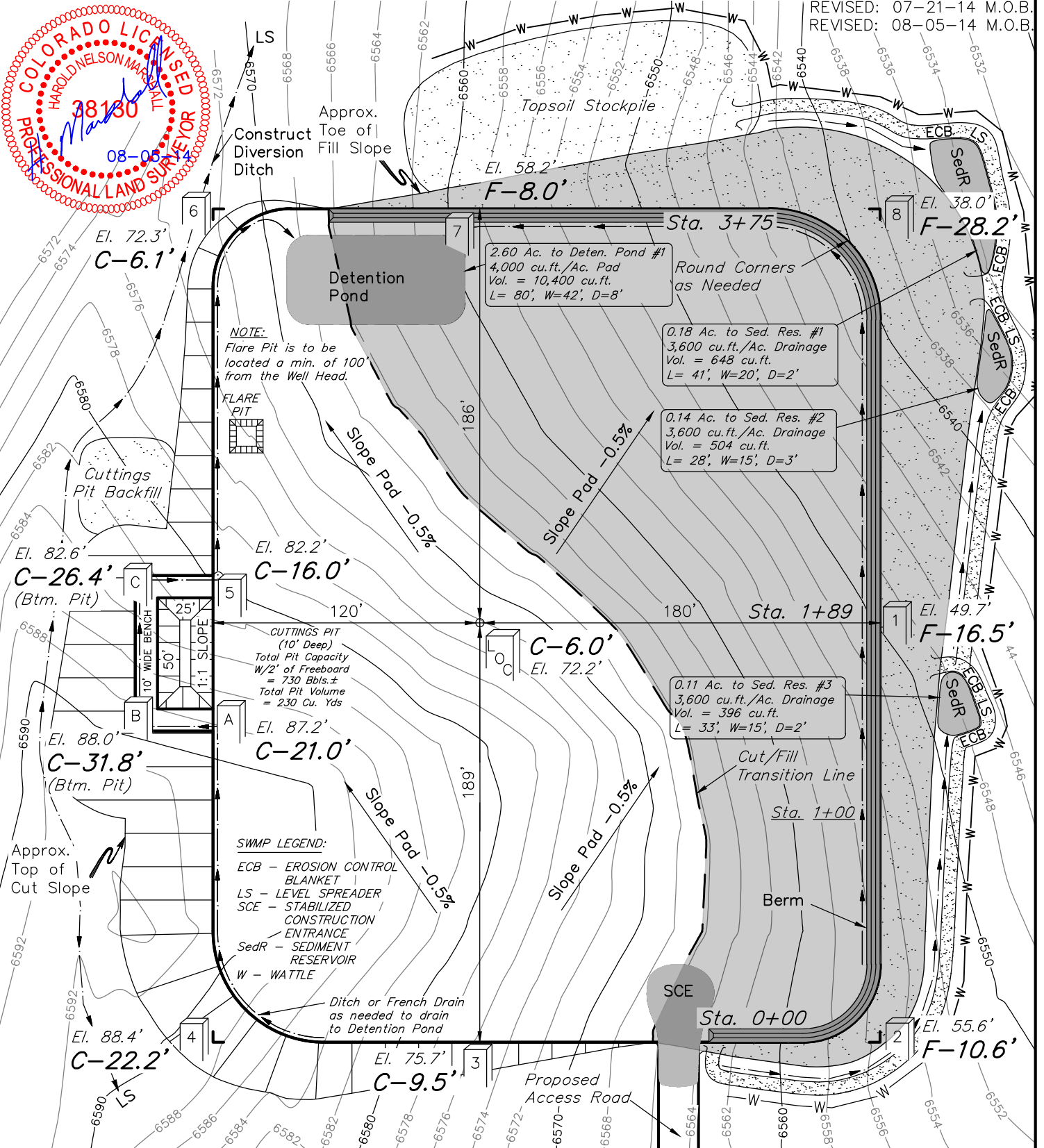
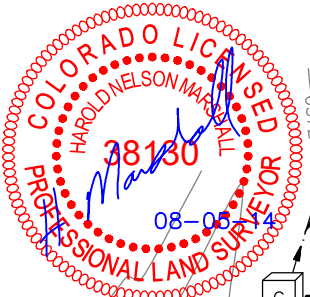
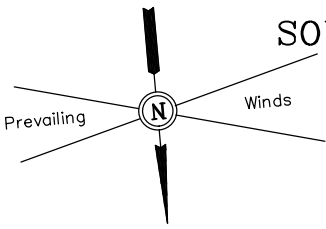
DRAWN BY: M.D.

REVISED: 11-18-11 T.B.

REVISED: 05-13-14 T.B.

REVISED: 07-21-14 M.O.B.

REVISED: 08-05-14 M.O.B.



Elev. Ungraded Ground At Loc. Stake = 6572.2'
FINISHED GRADE ELEV. AT LOC. STAKE = 6566.2'

UINTAH ENGINEERING & LAND SURVEYING
85 So. 200 East * Vernal, Utah 84078 * (435) 789-1017

SOUTHWESTERN ENERGY PRODUCTION COMPANY

FIGURE #2

CONSTRUCTION LAYOUT CROSS SECTIONS FOR

KLINE #21-23

SECTION 23, T7N, R91W, 6th. P.M.

714' FNL 1849' FWL

1" = 40'
X-Section Scale
1" = 100'

DATE: 06-27-11

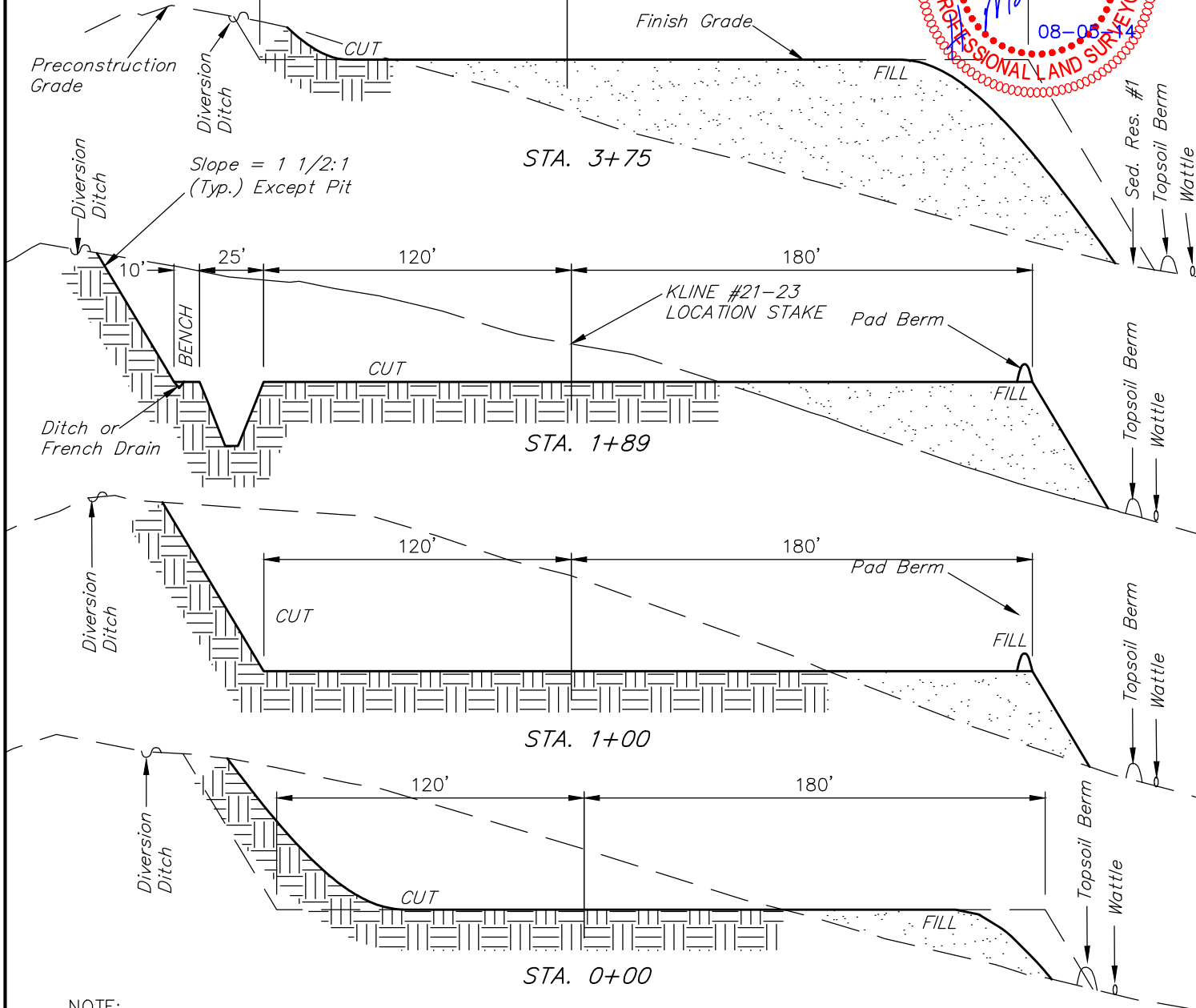
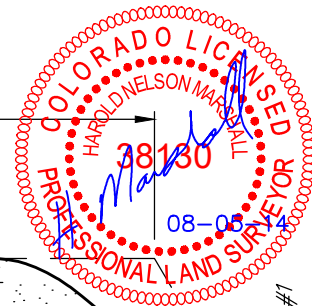
DRAWN BY: M.D.

REVISED: 11-18-11 T.B.

REVISED: 05-13-14 T.B.

REVISED: 07-21-14 M.O.B.

REVISED: 08-05-14 M.O.B.



NOTE:

Topsoil should not be Stripped Below Finished Grade on Substructure Area.

APPROXIMATE ACREAGE

WELL SITE DISTURBANCE = ± 3.632 ACRES
ACCESS ROAD DISTURBANCE = ± 0.264 ACRES
TOTAL = ± 3.896 ACRES

* NOTE:

FILL QUANTITY INCLUDES 5% FOR COMPACTION

APPROXIMATE YARDAGES

(6") Topsoil Stripping = 2,760 Cu. Yds.
Remaining Location = 28,960 Cu. Yds.
TOTAL CUT = 31,720 CU. YDS.
FILL = 28,820 CU. YDS.

EXCESS MATERIAL = 2,900 Cu. Yds.
Topsoil & Pit Backfill (1/2 Pit Vol.) = 2,900 Cu. Yds.
EXCESS UNBALANCE (After Interim Rehabilitation) = 0 Cu. Yds.

UINTAH ENGINEERING & LAND SURVEYING
85 So. 200 East * Vernal, Utah 84078 * (435) 789-1017

SOUTHWESTERN ENERGY PRODUCTION COMPANY

TYPICAL RIG LAYOUT FOR

KLINE #21-23

SECTION 23, T7N, R91W, 6th. P.M.

714' FNL 1849' FWL

FIGURE #3

SCALE: 1" = 60'

DATE: 06-27-11

DRAWN BY: M.D.

REVISED: 11-18-11 T.B.

REVISED: 05-13-14 T.B.

REVISED: 07-21-14 M.O.B.

REVISED: 08-05-14 M.O.B.



Approx.
Toe of
Fill Slope

Detention
Pond

FLOCK PIT

GAS
BUSTER

Cuttings
Pit Backfill

25'
50'
1:1 SLOPE

CUTTINGS PIT
(10' Deep)
Total Pit Capacity
W/2' of Freeboard
= 730 Bbls.±
Total Pit Volume
= 230 Cu. Yds

CUTTINGS
TANK

SHAKER TANK

WATER

COMPRESSOR

COMPRESSOR

SUCTION TANK

PUMP 1

PUMP 2

LOCATION/PICKUP

DOG
HOUSE

TOOLS

TRASH

WATER

FUEL

GENERATOR

GENERATOR

DIESEL

FUEL

GEN.

WATER

TRAILER

TRAILER

TRAILER

TRAILER

TRAILER

SCE

Cut/Fill
Transition Line

Berm

Proposed
Access Road

Approx.
Top of
Cut Slope

UINTAH ENGINEERING & LAND SURVEYING

85 So. 200 East * Vernal, Utah 84078 * (435) 789-1017

SOUTHWESTERN ENERGY PRODUCTION COMPANY

RECLAMATION DIAGRAM FOR

KLINE #21-23

SECTION 23, T7N, R91W, 6th. P.M.

714' FNL 1849' FWL

FIGURE #4

SCALE: 1" = 60'

DATE: 06-27-11

DRAWN BY: M.D.

REVISED: 11-18-11 T.B.

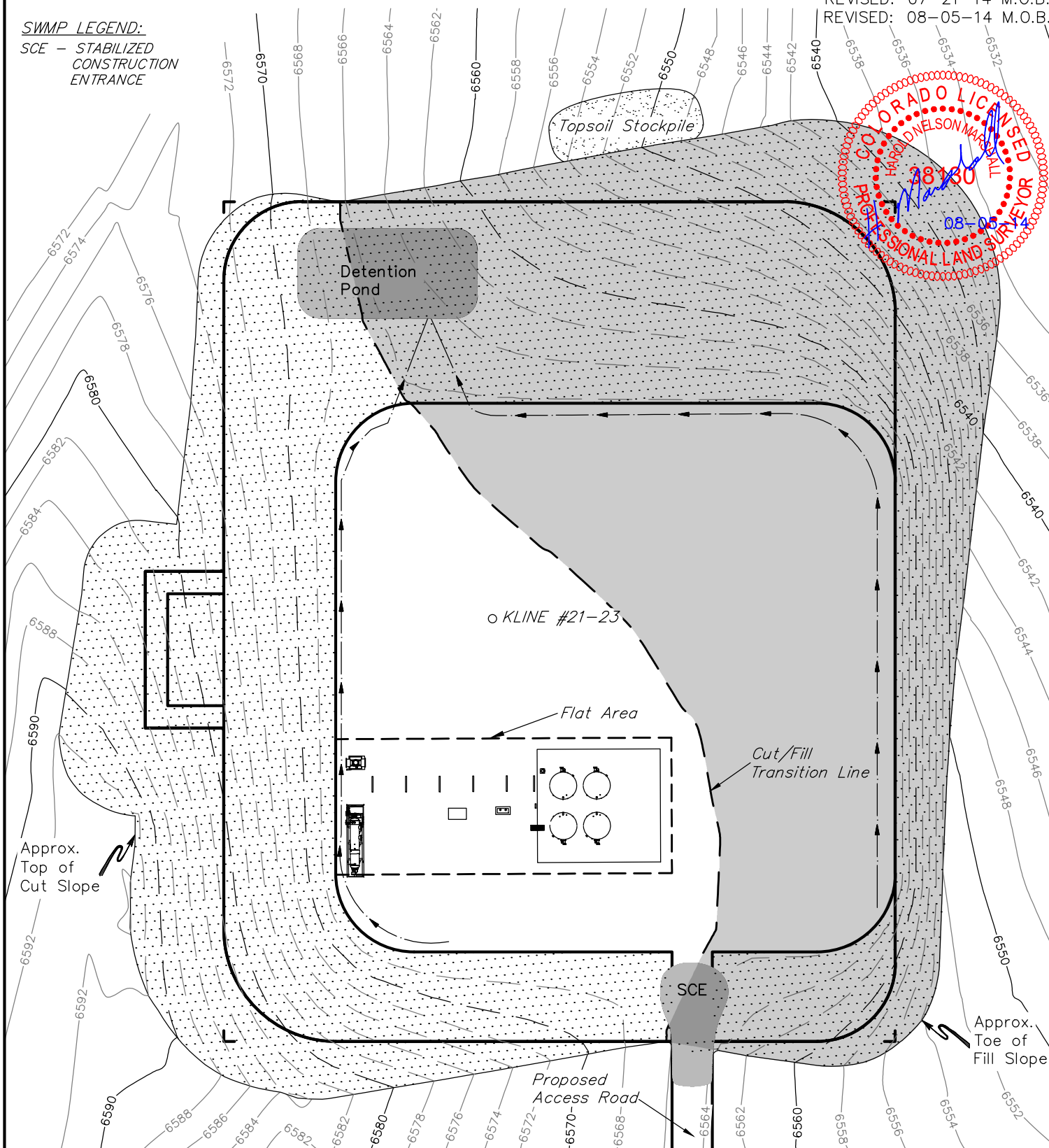
REVISED: 05-13-14 T.B.

REVISED: 07-21-14 M.O.B.

REVISED: 08-05-14 M.O.B.

SWMP LEGEND:

SCE - STABILIZED
CONSTRUCTION
ENTRANCE



RECLAIMED AREA

APPROXIMATE ACREAGES

UN-RECLAIMED = ± 1.398 ACRES

UINTAH ENGINEERING & LAND SURVEYING

85 So. 200 East * Vernal, Utah 84078 * (435) 789-1017