



**Bill Barrett Corporation**

## **Bill Barrett Corp.**

**Weld Co., CO**

**Sec.35-T5N-R62W**

**Anschutz State 5-62-35-1609CH2**

**Wellbore #1**

**Plan: Design #1**

## **Standard Planning Report**

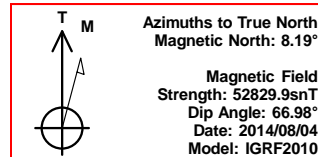
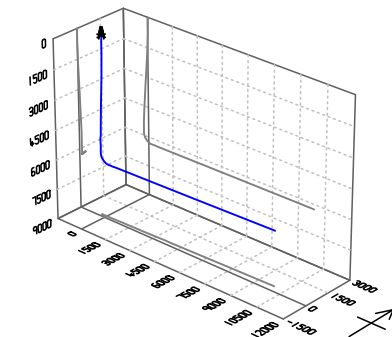
**04 August, 2014**

# **Archer**



Bill Barrett Corp.  
Project: Weld Co., CO  
Site: Sec.35-T5N-R62W  
Well: Anschutz State 5-62-35-1609CH2  
Wellbore: Wellbore #1  
Design: Design #1  
Lat: 40° 21' 39.801 N  
Long: 104° 17' 55.720 W  
Pad GL: 4640.00  
KB: WELL @ 4663.00usft (Original Well Elev)

# Archer



## SECTION DETAILS

MD	Inc	Azi	TVD	+N/-S	+E/-W	Dleg	TFace	VSec	Annotation
0.00	0.00	0.00	0.00	0.00	0.00	0.00	0.00	0.00	
900.00	0.00	0.00	900.00	0.00	0.00	0.00	0.00	0.00	Start Build 2.00
1130.60	4.61	295.32	1130.35	3.97	-8.39	2.00	295.32	-8.29	Start 3987.76 hold at 1130.60 MD
5118.35	4.61	295.32	5105.19	141.07	-298.23	0.00	0.00	-294.91	Start Drop -2.00
5348.95	0.00	0.00	5335.54	145.04	-306.62	2.00	180.00	-303.20	Start 500.01 hold at 5348.95 MD
5848.96	0.00	0.00	5835.55	145.04	-306.62	0.00	0.00	-303.20	Start Build 12.00
6602.06	90.37	88.68	6313.00	156.12	173.81	12.00	88.68	177.36	Start 9718.55 hold at 6602.06 MD
16320.61	90.37	88.68	6250.00	380.12	9889.58	0.00	0.00	9895.71	TD at 16320.61

## WELL DETAILS: Anschutz State 5-62-35-1609CH2

+N/-S	+E/-W	Northing	Ground Level: Easting	Latitude	Longitude	Slot
0.00	0.00	1376640.395	3334725.518	40° 21' 39.801 N	104° 17' 55.720 W	

## PROJECT DETAILS: Weld Co., CO

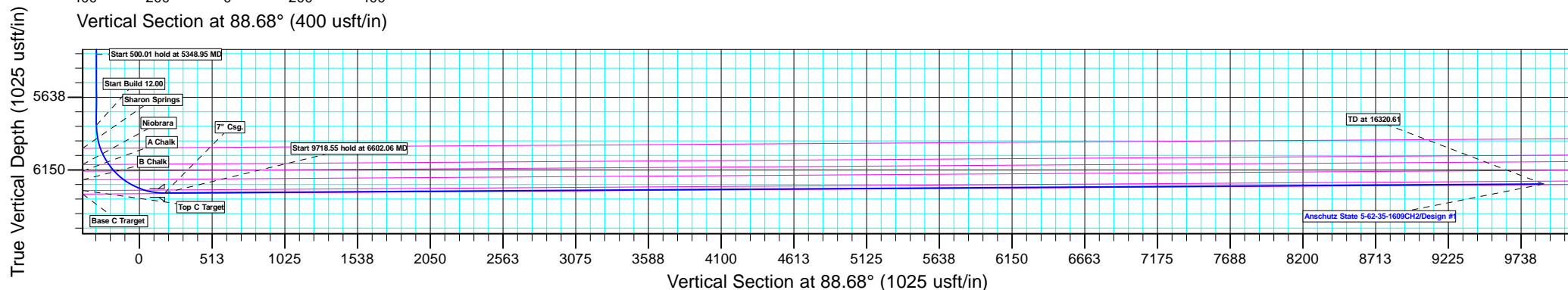
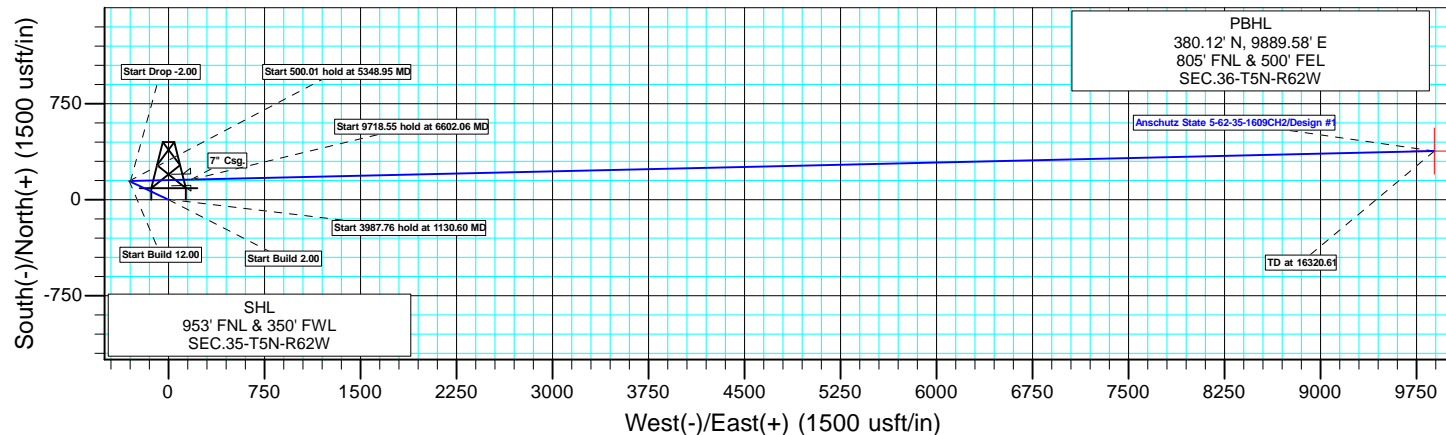
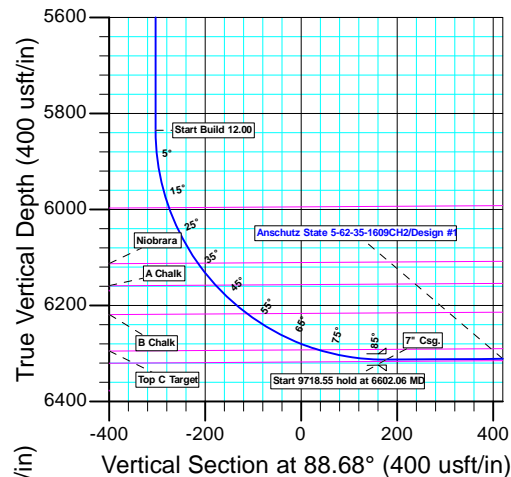
Geodetic System: US State Plane 1983  
Datum: North American Datum 1983  
Ellipsoid: GRS 1980  
Zone: Colorado Northern Zone  
System Datum: Mean Sea Level

## CASING DETAILS

TVD	MD	Name
6313.00	6602.06	7" Csg.

## WELLBORE TARGET DETAILS (LAT/LONG)

Name	TVD	+N/-S	+E/-W	Latitude	Longitude	Shape Point
Anschutz State 5-62-35-1609CH2 tgt	6250.00	380.12	9889.58	40° 21' 43.538 N	104° 15' 47.959 W	



Plan: Design #1 (Anschutz State 5-62-35-1609CH2/Wellbore #1)

Created By: Ricky Osburn Date: 14:11, August 04 2014

<b>Database:</b>	EDMDBBW	<b>Local Co-ordinate Reference:</b>	Well Anschutz State 5-62-35-1609CH2
<b>Company:</b>	Bill Barrett Corp.	<b>TVD Reference:</b>	WELL @ 4663.00usft (Original Well Elev)
<b>Project:</b>	Weld Co., CO	<b>MD Reference:</b>	WELL @ 4663.00usft (Original Well Elev)
<b>Site:</b>	Sec.35-T5N-R62W	<b>North Reference:</b>	True
<b>Well:</b>	Anschutz State 5-62-35-1609CH2	<b>Survey Calculation Method:</b>	Minimum Curvature
<b>Wellbore:</b>	Wellbore #1		
<b>Design:</b>	Design #1		

<b>Project</b>	Weld Co., CO		
<b>Map System:</b>	US State Plane 1983	<b>System Datum:</b>	Mean Sea Level
<b>Geo Datum:</b>	North American Datum 1983		
<b>Map Zone:</b>	Colorado Northern Zone		

Site		Sec.35-T5N-R62W			
Site Position:		Northing:	1,375,286.395 usft	Latitude:	40° 21' 26.420 N
From:	Lat/Long	Easting:	3,334,739.959 usft	Longitude:	104° 17' 55.770 W
Position Uncertainty:	0.00 usft	Slot Radius:	13-3/16"	Grid Convergence:	0.78 °

Well	Anschutz State 5-62-35-1609CH2					
Well Position	+N/-S	1,354.07 usft	Northing:	1,376,640.395 usft	Latitude:	40° 21' 39.801 N
	+E/-W	3.90 usft	Easting:	3,334,725.518 usft	Longitude:	104° 17' 55.720 W
Position Uncertainty		0.00 usft	Wellhead Elevation:	usft	Ground Level:	4,640.00 usft

<b>Wellbore</b>	Wellbore #1				
<b>Magnetics</b>	<b>Model Name</b>	<b>Sample Date</b>	<b>Declination (°)</b>	<b>Dip Angle (°)</b>	<b>Field Strength (nT)</b>
	IGRF2010	2014/08/04	8.19	66.98	52,830

<b>Design</b>	Design #1			
<b>Audit Notes:</b>				
<b>Version:</b>	<b>Phase:</b>	PLAN	<b>Tie On Depth:</b>	0.00
<b>Vertical Section:</b>	<b>Depth From (TVD) (usft)</b>	<b>+N/-S (usft)</b>	<b>+E/-W (usft)</b>	<b>Direction (°)</b>
	0.00	0.00	0.00	88.68

<b>Plan Sections</b>										
Measured Depth (usft)	Inclination (°)	Azimuth (°)	Vertical Depth (usft)	+N/-S (usft)	+E/-W (usft)	Dogleg Rate (°/100usft)	Build Rate (°/100usft)	Turn Rate (°/100usft)	TFO (°)	Target
0.00	0.00	0.00	0.00	0.00	0.00	0.00	0.00	0.00	0.00	
900.00	0.00	0.00	900.00	0.00	0.00	0.00	0.00	0.00	0.00	
1,130.60	4.61	295.32	1,130.35	3.97	-8.39	2.00	2.00	0.00	295.32	
5,118.35	4.61	295.32	5,105.19	141.07	-298.23	0.00	0.00	0.00	0.00	
5,348.95	0.00	0.00	5,335.54	145.04	-306.62	2.00	-2.00	0.00	180.00	
5,848.96	0.00	0.00	5,835.55	145.04	-306.62	0.00	0.00	0.00	0.00	
6,602.06	90.37	88.68	6,313.00	156.12	173.81	12.00	12.00	0.00	88.68	Anschutz State 5-62-35-1609CH2
16,320.61	90.37	88.68	6,250.00	380.12	9,889.58	0.00	0.00	0.00	0.00	Anschutz State 5-62-35-1609CH2

<b>Database:</b>	EDMDBBW	<b>Local Co-ordinate Reference:</b>	Well Anschutz State 5-62-35-1609CH2
<b>Company:</b>	Bill Barrett Corp.	<b>TVD Reference:</b>	WELL @ 4663.00usft (Original Well Elev)
<b>Project:</b>	Weld Co., CO	<b>MD Reference:</b>	WELL @ 4663.00usft (Original Well Elev)
<b>Site:</b>	Sec.35-T5N-R62W	<b>North Reference:</b>	True
<b>Well:</b>	Anschutz State 5-62-35-1609CH2	<b>Survey Calculation Method:</b>	Minimum Curvature
<b>Wellbore:</b>	Wellbore #1		
<b>Design:</b>	Design #1		

Planned Survey									
Measured Depth (usft)	Inclination (°)	Azimuth (°)	Vertical Depth (usft)	+N/-S (usft)	+E/-W (usft)	Vertical Section (usft)	Dogleg Rate (°/100usft)	Build Rate (°/100usft)	Turn Rate (°/100usft)
0.00	0.00	0.00	0.00	0.00	0.00	0.00	0.00	0.00	0.00
100.00	0.00	0.00	100.00	0.00	0.00	0.00	0.00	0.00	0.00
200.00	0.00	0.00	200.00	0.00	0.00	0.00	0.00	0.00	0.00
300.00	0.00	0.00	300.00	0.00	0.00	0.00	0.00	0.00	0.00
400.00	0.00	0.00	400.00	0.00	0.00	0.00	0.00	0.00	0.00
500.00	0.00	0.00	500.00	0.00	0.00	0.00	0.00	0.00	0.00
600.00	0.00	0.00	600.00	0.00	0.00	0.00	0.00	0.00	0.00
700.00	0.00	0.00	700.00	0.00	0.00	0.00	0.00	0.00	0.00
800.00	0.00	0.00	800.00	0.00	0.00	0.00	0.00	0.00	0.00
<b>Start Build 2.00</b>									
900.00	0.00	0.00	900.00	0.00	0.00	0.00	0.00	0.00	0.00
1,000.00	2.00	295.32	999.98	0.75	-1.58	-1.56	2.00	2.00	0.00
1,100.00	4.00	295.32	1,099.84	2.98	-6.31	-6.24	2.00	2.00	0.00
<b>Start 3987.76 hold at 1130.60 MD</b>									
1,130.60	4.61	295.32	1,130.35	3.97	-8.39	-8.29	2.00	2.00	0.00
1,200.00	4.61	295.32	1,199.53	6.35	-13.43	-13.28	0.00	0.00	0.00
1,300.00	4.61	295.32	1,299.20	9.79	-20.70	-20.47	0.00	0.00	0.00
1,400.00	4.61	295.32	1,398.88	13.23	-27.97	-27.65	0.00	0.00	0.00
1,500.00	4.61	295.32	1,498.55	16.67	-35.24	-34.84	0.00	0.00	0.00
1,600.00	4.61	295.32	1,598.23	20.11	-42.50	-42.03	0.00	0.00	0.00
1,700.00	4.61	295.32	1,697.91	23.54	-49.77	-49.22	0.00	0.00	0.00
1,800.00	4.61	295.32	1,797.58	26.98	-57.04	-56.40	0.00	0.00	0.00
1,900.00	4.61	295.32	1,897.26	30.42	-64.31	-63.59	0.00	0.00	0.00
2,000.00	4.61	295.32	1,996.94	33.86	-71.58	-70.78	0.00	0.00	0.00
2,100.00	4.61	295.32	2,096.61	37.30	-78.85	-77.97	0.00	0.00	0.00
2,200.00	4.61	295.32	2,196.29	40.73	-86.11	-85.15	0.00	0.00	0.00
2,300.00	4.61	295.32	2,295.96	44.17	-93.38	-92.34	0.00	0.00	0.00
2,400.00	4.61	295.32	2,395.64	47.61	-100.65	-99.53	0.00	0.00	0.00
2,500.00	4.61	295.32	2,495.32	51.05	-107.92	-106.72	0.00	0.00	0.00
2,600.00	4.61	295.32	2,594.99	54.49	-115.19	-113.90	0.00	0.00	0.00
2,700.00	4.61	295.32	2,694.67	57.93	-122.46	-121.09	0.00	0.00	0.00
2,800.00	4.61	295.32	2,794.35	61.36	-129.73	-128.28	0.00	0.00	0.00
2,900.00	4.61	295.32	2,894.02	64.80	-136.99	-135.46	0.00	0.00	0.00
3,000.00	4.61	295.32	2,993.70	68.24	-144.26	-142.65	0.00	0.00	0.00
3,100.00	4.61	295.32	3,093.37	71.68	-151.53	-149.84	0.00	0.00	0.00
3,200.00	4.61	295.32	3,193.05	75.12	-158.80	-157.03	0.00	0.00	0.00
3,300.00	4.61	295.32	3,292.73	78.55	-166.07	-164.21	0.00	0.00	0.00
3,400.00	4.61	295.32	3,392.40	81.99	-173.34	-171.40	0.00	0.00	0.00
3,500.00	4.61	295.32	3,492.08	85.43	-180.61	-178.59	0.00	0.00	0.00
3,600.00	4.61	295.32	3,591.76	88.87	-187.87	-185.78	0.00	0.00	0.00
3,700.00	4.61	295.32	3,691.43	92.31	-195.14	-192.96	0.00	0.00	0.00
3,800.00	4.61	295.32	3,791.11	95.75	-202.41	-200.15	0.00	0.00	0.00
3,900.00	4.61	295.32	3,890.78	99.18	-209.68	-207.34	0.00	0.00	0.00
4,000.00	4.61	295.32	3,990.46	102.62	-216.95	-214.53	0.00	0.00	0.00
4,100.00	4.61	295.32	4,090.14	106.06	-224.22	-221.71	0.00	0.00	0.00
<b>Sussex</b>									
4,175.58	4.61	295.32	4,165.47	108.66	-229.71	-227.15	0.00	0.00	0.00
4,200.00	4.61	295.32	4,189.81	109.50	-231.48	-228.90	0.00	0.00	0.00
4,300.00	4.61	295.32	4,289.49	112.94	-238.75	-236.09	0.00	0.00	0.00
4,400.00	4.61	295.32	4,389.17	116.38	-246.02	-243.28	0.00	0.00	0.00
4,500.00	4.61	295.32	4,488.84	119.81	-253.29	-250.46	0.00	0.00	0.00
4,600.00	4.61	295.32	4,588.52	123.25	-260.56	-257.65	0.00	0.00	0.00
4,700.00	4.61	295.32	4,688.19	126.69	-267.83	-264.84	0.00	0.00	0.00

<b>Database:</b>	EDMDBBW	<b>Local Co-ordinate Reference:</b>	Well Anschutz State 5-62-35-1609CH2
<b>Company:</b>	Bill Barrett Corp.	<b>TVD Reference:</b>	WELL @ 4663.00usft (Original Well Elev)
<b>Project:</b>	Weld Co., CO	<b>MD Reference:</b>	WELL @ 4663.00usft (Original Well Elev)
<b>Site:</b>	Sec.35-T5N-R62W	<b>North Reference:</b>	True
<b>Well:</b>	Anschutz State 5-62-35-1609CH2	<b>Survey Calculation Method:</b>	Minimum Curvature
<b>Wellbore:</b>	Wellbore #1		
<b>Design:</b>	Design #1		

Planned Survey									
Measured Depth (usft)	Inclination (°)	Azimuth (°)	Vertical Depth (usft)	+N/-S (usft)	+E/-W (usft)	Vertical Section (usft)	Dogleg Rate (°/100usft)	Build Rate (°/100usft)	Turn Rate (°/100usft)
<b>Shannon</b>									
4,711.56	4.61	295.32	4,699.72	127.09	-268.67	-265.67	0.00	0.00	0.00
4,800.00	4.61	295.32	4,787.87	130.13	-275.10	-272.02	0.00	0.00	0.00
4,900.00	4.61	295.32	4,887.55	133.57	-282.36	-279.21	0.00	0.00	0.00
5,000.00	4.61	295.32	4,987.22	137.00	-289.63	-286.40	0.00	0.00	0.00
5,100.00	4.61	295.32	5,086.90	140.44	-296.90	-293.59	0.00	0.00	0.00
<b>Start Drop -2.00</b>									
5,118.35	4.61	295.32	5,105.19	141.07	-298.23	-294.91	0.00	0.00	0.00
5,200.00	2.98	295.32	5,186.66	143.38	-303.12	-299.74	2.00	-2.00	0.00
5,300.00	0.98	295.32	5,286.59	144.86	-306.24	-302.82	2.00	-2.00	0.00
<b>Start 500.01 hold at 5348.95 MD</b>									
5,348.95	0.00	0.00	5,335.54	145.04	-306.62	-303.20	2.00	-2.00	0.00
5,400.00	0.00	0.00	5,386.59	145.04	-306.62	-303.20	0.00	0.00	0.00
5,500.00	0.00	0.00	5,486.59	145.04	-306.62	-303.20	0.00	0.00	0.00
5,600.00	0.00	0.00	5,586.59	145.04	-306.62	-303.20	0.00	0.00	0.00
5,700.00	0.00	0.00	5,686.59	145.04	-306.62	-303.20	0.00	0.00	0.00
5,800.00	0.00	0.00	5,786.59	145.04	-306.62	-303.20	0.00	0.00	0.00
<b>Start Build 12.00</b>									
5,848.96	0.00	0.00	5,835.55	145.04	-306.62	-303.20	0.00	0.00	0.00
5,850.00	0.12	88.68	5,836.59	145.04	-306.62	-303.20	12.00	12.00	0.00
5,875.00	3.12	88.68	5,861.58	145.06	-305.91	-302.49	12.00	12.00	0.00
5,900.00	6.12	88.68	5,886.49	145.10	-303.90	-300.47	12.00	12.00	0.00
5,925.00	9.12	88.68	5,911.27	145.18	-300.58	-297.16	12.00	12.00	0.00
5,950.00	12.12	88.68	5,935.84	145.29	-295.97	-292.55	12.00	12.00	0.00
5,975.00	15.12	88.68	5,960.13	145.42	-290.08	-286.66	12.00	12.00	0.00
6,000.00	18.12	88.68	5,984.08	145.59	-282.93	-279.51	12.00	12.00	0.00
<b>Sharon Springs</b>									
6,013.42	19.74	88.68	5,996.78	145.69	-278.58	-275.15	12.00	12.00	0.00
6,025.00	21.12	88.68	6,007.63	145.78	-274.54	-271.11	12.00	12.00	0.00
6,050.00	24.12	88.68	6,030.70	146.00	-264.93	-261.49	12.00	12.00	0.00
6,075.00	27.12	88.68	6,053.24	146.25	-254.12	-250.68	12.00	12.00	0.00
6,100.00	30.12	88.68	6,075.18	146.53	-242.15	-238.71	12.00	12.00	0.00
6,125.00	33.12	88.68	6,096.47	146.83	-229.04	-225.60	12.00	12.00	0.00
<b>Niobrara</b>									
6,144.27	35.44	88.68	6,112.39	147.08	-218.20	-214.75	12.00	12.00	0.00
6,150.00	36.12	88.68	6,117.04	147.16	-214.84	-211.40	12.00	12.00	0.00
6,175.00	39.12	88.68	6,136.84	147.51	-199.59	-196.14	12.00	12.00	0.00
6,200.00	42.12	88.68	6,155.81	147.88	-183.32	-179.86	12.00	12.00	0.00
<b>A Chalk</b>									
6,203.16	42.50	88.68	6,158.15	147.93	-181.19	-177.73	12.00	12.00	0.00
6,225.00	45.12	88.68	6,173.90	148.28	-166.07	-162.61	12.00	12.00	0.00
6,250.00	48.12	88.68	6,191.07	148.70	-147.91	-144.45	12.00	12.00	0.00
6,275.00	51.12	88.68	6,207.26	149.14	-128.87	-125.40	12.00	12.00	0.00
<b>B Chalk</b>									
6,292.05	53.17	88.68	6,217.72	149.45	-115.42	-111.94	12.00	12.00	0.00
6,300.00	54.12	88.68	6,222.44	149.60	-109.01	-105.54	12.00	12.00	0.00
6,325.00	57.12	88.68	6,236.55	150.07	-88.39	-84.91	12.00	12.00	0.00
6,350.00	60.12	88.68	6,249.57	150.56	-67.05	-63.56	12.00	12.00	0.00
6,375.00	63.12	88.68	6,261.45	151.07	-45.06	-41.57	12.00	12.00	0.00
6,400.00	66.12	88.68	6,272.16	151.59	-22.48	-18.98	12.00	12.00	0.00
6,425.00	69.12	88.68	6,281.67	152.12	0.63	4.13	12.00	12.00	0.00
6,450.00	72.12	88.68	6,289.97	152.67	24.20	27.71	12.00	12.00	0.00
<b>Top C Target</b>									

<b>Database:</b>	EDMDBBW	<b>Local Co-ordinate Reference:</b>	Well Anschutz State 5-62-35-1609CH2
<b>Company:</b>	Bill Barrett Corp.	<b>TVD Reference:</b>	WELL @ 4663.00usft (Original Well Elev)
<b>Project:</b>	Weld Co., CO	<b>MD Reference:</b>	WELL @ 4663.00usft (Original Well Elev)
<b>Site:</b>	Sec.35-T5N-R62W	<b>North Reference:</b>	True
<b>Well:</b>	Anschutz State 5-62-35-1609CH2	<b>Survey Calculation Method:</b>	Minimum Curvature
<b>Wellbore:</b>	Wellbore #1		
<b>Design:</b>	Design #1		

Planned Survey									
Measured Depth (usft)	Inclination (°)	Azimuth (°)	Vertical Depth (usft)	+N/-S (usft)	+E/-W (usft)	Vertical Section (usft)	Dogleg Rate (°/100usft)	Build Rate (°/100usft)	Turn Rate (°/100usft)
6,459.40	73.25	88.68	6,292.76	152.87	33.17	36.69	12.00	12.00	0.00
6,475.00	75.12	88.68	6,297.01	153.22	48.18	51.70	12.00	12.00	0.00
6,500.00	78.12	88.68	6,302.80	153.78	72.49	76.01	12.00	12.00	0.00
6,525.00	81.12	88.68	6,307.30	154.35	97.07	100.60	12.00	12.00	0.00
6,550.00	84.12	88.68	6,310.51	154.92	121.86	125.39	12.00	12.00	0.00
6,575.00	87.12	88.68	6,312.41	155.49	146.77	150.32	12.00	12.00	0.00
Start 9718.55 hold at 6602.06 MD - 7" Csg.									
6,602.06	90.37	88.68	6,313.00	156.12	173.82	177.37	12.00	12.00	0.00
6,700.00	90.37	88.68	6,312.37	158.37	271.73	275.31	0.00	0.00	0.00
6,800.00	90.37	88.68	6,311.72	160.68	371.70	375.30	0.00	0.00	0.00
6,900.00	90.37	88.68	6,311.07	162.98	471.67	475.30	0.00	0.00	0.00
7,000.00	90.37	88.68	6,310.42	165.29	571.64	575.30	0.00	0.00	0.00
7,100.00	90.37	88.68	6,309.78	167.59	671.61	675.30	0.00	0.00	0.00
7,200.00	90.37	88.68	6,309.13	169.90	771.59	775.30	0.00	0.00	0.00
7,300.00	90.37	88.68	6,308.48	172.20	871.56	875.29	0.00	0.00	0.00
7,400.00	90.37	88.68	6,307.83	174.51	971.53	975.29	0.00	0.00	0.00
7,500.00	90.37	88.68	6,307.18	176.81	1,071.50	1,075.29	0.00	0.00	0.00
7,600.00	90.37	88.68	6,306.54	179.12	1,171.47	1,175.29	0.00	0.00	0.00
7,700.00	90.37	88.68	6,305.89	181.42	1,271.44	1,275.28	0.00	0.00	0.00
7,800.00	90.37	88.68	6,305.24	183.73	1,371.41	1,375.28	0.00	0.00	0.00
7,900.00	90.37	88.68	6,304.59	186.03	1,471.39	1,475.28	0.00	0.00	0.00
8,000.00	90.37	88.68	6,303.94	188.34	1,571.36	1,575.28	0.00	0.00	0.00
8,100.00	90.37	88.68	6,303.29	190.64	1,671.33	1,675.28	0.00	0.00	0.00
8,200.00	90.37	88.68	6,302.65	192.95	1,771.30	1,775.27	0.00	0.00	0.00
8,300.00	90.37	88.68	6,302.00	195.25	1,871.27	1,875.27	0.00	0.00	0.00
8,400.00	90.37	88.68	6,301.35	197.56	1,971.24	1,975.27	0.00	0.00	0.00
8,500.00	90.37	88.68	6,300.70	199.86	2,071.21	2,075.27	0.00	0.00	0.00
8,600.00	90.37	88.68	6,300.05	202.17	2,171.18	2,175.27	0.00	0.00	0.00
8,700.00	90.37	88.68	6,299.40	204.47	2,271.16	2,275.26	0.00	0.00	0.00
8,800.00	90.37	88.68	6,298.76	206.78	2,371.13	2,375.26	0.00	0.00	0.00
8,900.00	90.37	88.68	6,298.11	209.08	2,471.10	2,475.26	0.00	0.00	0.00
9,000.00	90.37	88.68	6,297.46	211.39	2,571.07	2,575.26	0.00	0.00	0.00
9,100.00	90.37	88.68	6,296.81	213.69	2,671.04	2,675.26	0.00	0.00	0.00
9,200.00	90.37	88.68	6,296.16	216.00	2,771.01	2,775.25	0.00	0.00	0.00
9,300.00	90.37	88.68	6,295.51	218.30	2,870.98	2,875.25	0.00	0.00	0.00
9,400.00	90.37	88.68	6,294.87	220.61	2,970.96	2,975.25	0.00	0.00	0.00
9,500.00	90.37	88.68	6,294.22	222.91	3,070.93	3,075.25	0.00	0.00	0.00
9,600.00	90.37	88.68	6,293.57	225.22	3,170.90	3,175.24	0.00	0.00	0.00
9,700.00	90.37	88.68	6,292.92	227.52	3,270.87	3,275.24	0.00	0.00	0.00
9,800.00	90.37	88.68	6,292.27	229.83	3,370.84	3,375.24	0.00	0.00	0.00
9,900.00	90.37	88.68	6,291.62	232.13	3,470.81	3,475.24	0.00	0.00	0.00
10,000.00	90.37	88.68	6,290.98	234.44	3,570.78	3,575.24	0.00	0.00	0.00
10,100.00	90.37	88.68	6,290.33	236.74	3,670.75	3,675.23	0.00	0.00	0.00
10,200.00	90.37	88.68	6,289.68	239.05	3,770.73	3,775.23	0.00	0.00	0.00
10,300.00	90.37	88.68	6,289.03	241.35	3,870.70	3,875.23	0.00	0.00	0.00
10,400.00	90.37	88.68	6,288.38	243.66	3,970.67	3,975.23	0.00	0.00	0.00
10,500.00	90.37	88.68	6,287.74	245.96	4,070.64	4,075.23	0.00	0.00	0.00
10,600.00	90.37	88.68	6,287.09	248.27	4,170.61	4,175.22	0.00	0.00	0.00
10,700.00	90.37	88.68	6,286.44	250.57	4,270.58	4,275.22	0.00	0.00	0.00
10,800.00	90.37	88.68	6,285.79	252.88	4,370.55	4,375.22	0.00	0.00	0.00
10,900.00	90.37	88.68	6,285.14	255.18	4,470.53	4,475.22	0.00	0.00	0.00
11,000.00	90.37	88.68	6,284.49	257.49	4,570.50	4,575.22	0.00	0.00	0.00
11,100.00	90.37	88.68	6,283.85	259.79	4,670.47	4,675.21	0.00	0.00	0.00

<b>Database:</b>	EDMDBBW	<b>Local Co-ordinate Reference:</b>	Well Anschutz State 5-62-35-1609CH2
<b>Company:</b>	Bill Barrett Corp.	<b>TVD Reference:</b>	WELL @ 4663.00usft (Original Well Elev)
<b>Project:</b>	Weld Co., CO	<b>MD Reference:</b>	WELL @ 4663.00usft (Original Well Elev)
<b>Site:</b>	Sec.35-T5N-R62W	<b>North Reference:</b>	True
<b>Well:</b>	Anschutz State 5-62-35-1609CH2	<b>Survey Calculation Method:</b>	Minimum Curvature
<b>Wellbore:</b>	Wellbore #1		
<b>Design:</b>	Design #1		

Planned Survey									
Measured Depth (usft)	Inclination (°)	Azimuth (°)	Vertical Depth (usft)	+N/-S (usft)	+E/-W (usft)	Vertical Section (usft)	Dogleg Rate (°/100usft)	Build Rate (°/100usft)	Turn Rate (°/100usft)
11,200.00	90.37	88.68	6,283.20	262.10	4,770.44	4,775.21	0.00	0.00	0.00
11,300.00	90.37	88.68	6,282.55	264.40	4,870.41	4,875.21	0.00	0.00	0.00
11,400.00	90.37	88.68	6,281.90	266.71	4,970.38	4,975.21	0.00	0.00	0.00
11,500.00	90.37	88.68	6,281.25	269.01	5,070.35	5,075.20	0.00	0.00	0.00
11,600.00	90.37	88.68	6,280.60	271.32	5,170.32	5,175.20	0.00	0.00	0.00
11,700.00	90.37	88.68	6,279.96	273.62	5,270.30	5,275.20	0.00	0.00	0.00
11,800.00	90.37	88.68	6,279.31	275.93	5,370.27	5,375.20	0.00	0.00	0.00
11,900.00	90.37	88.68	6,278.66	278.23	5,470.24	5,475.20	0.00	0.00	0.00
12,000.00	90.37	88.68	6,278.01	280.54	5,570.21	5,575.19	0.00	0.00	0.00
12,100.00	90.37	88.68	6,277.36	282.84	5,670.18	5,675.19	0.00	0.00	0.00
12,200.00	90.37	88.68	6,276.71	285.15	5,770.15	5,775.19	0.00	0.00	0.00
12,300.00	90.37	88.68	6,276.07	287.45	5,870.12	5,875.19	0.00	0.00	0.00
12,400.00	90.37	88.68	6,275.42	289.76	5,970.10	5,975.19	0.00	0.00	0.00
12,500.00	90.37	88.68	6,274.77	292.06	6,070.07	6,075.18	0.00	0.00	0.00
12,600.00	90.37	88.68	6,274.12	294.37	6,170.04	6,175.18	0.00	0.00	0.00
12,700.00	90.37	88.68	6,273.47	296.67	6,270.01	6,275.18	0.00	0.00	0.00
12,800.00	90.37	88.68	6,272.82	298.98	6,369.98	6,375.18	0.00	0.00	0.00
12,900.00	90.37	88.68	6,272.18	301.28	6,469.95	6,475.18	0.00	0.00	0.00
13,000.00	90.37	88.68	6,271.53	303.59	6,569.92	6,575.17	0.00	0.00	0.00
13,100.00	90.37	88.68	6,270.88	305.89	6,669.89	6,675.17	0.00	0.00	0.00
13,200.00	90.37	88.68	6,270.23	308.20	6,769.87	6,775.17	0.00	0.00	0.00
13,300.00	90.37	88.68	6,269.58	310.50	6,869.84	6,875.17	0.00	0.00	0.00
13,400.00	90.37	88.68	6,268.94	312.81	6,969.81	6,975.16	0.00	0.00	0.00
13,500.00	90.37	88.68	6,268.29	315.11	7,069.78	7,075.16	0.00	0.00	0.00
13,600.00	90.37	88.68	6,267.64	317.42	7,169.75	7,175.16	0.00	0.00	0.00
13,700.00	90.37	88.68	6,266.99	319.72	7,269.72	7,275.16	0.00	0.00	0.00
13,800.00	90.37	88.68	6,266.34	322.03	7,369.69	7,375.16	0.00	0.00	0.00
13,900.00	90.37	88.68	6,265.69	324.33	7,469.67	7,475.15	0.00	0.00	0.00
14,000.00	90.37	88.68	6,265.05	326.64	7,569.64	7,575.15	0.00	0.00	0.00
14,100.00	90.37	88.68	6,264.40	328.94	7,669.61	7,675.15	0.00	0.00	0.00
14,200.00	90.37	88.68	6,263.75	331.25	7,769.58	7,775.15	0.00	0.00	0.00
14,300.00	90.37	88.68	6,263.10	333.55	7,869.55	7,875.15	0.00	0.00	0.00
14,400.00	90.37	88.68	6,262.45	335.86	7,969.52	7,975.14	0.00	0.00	0.00
14,500.00	90.37	88.68	6,261.80	338.16	8,069.49	8,075.14	0.00	0.00	0.00
14,600.00	90.37	88.68	6,261.16	340.47	8,169.46	8,175.14	0.00	0.00	0.00
14,700.00	90.37	88.68	6,260.51	342.77	8,269.44	8,275.14	0.00	0.00	0.00
14,800.00	90.37	88.68	6,259.86	345.08	8,369.41	8,375.14	0.00	0.00	0.00
14,900.00	90.37	88.68	6,259.21	347.38	8,469.38	8,475.13	0.00	0.00	0.00
15,000.00	90.37	88.68	6,258.56	349.68	8,569.35	8,575.13	0.00	0.00	0.00
15,100.00	90.37	88.68	6,257.91	351.99	8,669.32	8,675.13	0.00	0.00	0.00
15,200.00	90.37	88.68	6,257.27	354.29	8,769.29	8,775.13	0.00	0.00	0.00
15,300.00	90.37	88.68	6,256.62	356.60	8,869.26	8,875.12	0.00	0.00	0.00
15,400.00	90.37	88.68	6,255.97	358.90	8,969.24	8,975.12	0.00	0.00	0.00
15,500.00	90.37	88.68	6,255.32	361.21	9,069.21	9,075.12	0.00	0.00	0.00
15,600.00	90.37	88.68	6,254.67	363.51	9,169.18	9,175.12	0.00	0.00	0.00
15,700.00	90.37	88.68	6,254.02	365.82	9,269.15	9,275.12	0.00	0.00	0.00
15,800.00	90.37	88.68	6,253.38	368.12	9,369.12	9,375.11	0.00	0.00	0.00
15,900.00	90.37	88.68	6,252.73	370.43	9,469.09	9,475.11	0.00	0.00	0.00
16,000.00	90.37	88.68	6,252.08	372.73	9,569.06	9,575.11	0.00	0.00	0.00
16,100.00	90.37	88.68	6,251.43	375.04	9,669.03	9,675.11	0.00	0.00	0.00
16,200.00	90.37	88.68	6,250.78	377.34	9,769.01	9,775.11	0.00	0.00	0.00
16,300.00	90.37	88.68	6,250.13	379.65	9,868.98	9,875.10	0.00	0.00	0.00
<b>TD at 16320.61</b>									
16,320.61	90.37	88.68	6,250.00	380.12	9,889.58	9,895.71	0.00	0.00	0.00



<b>Database:</b>	EDMDBBW	<b>Local Co-ordinate Reference:</b>	Well Anschutz State 5-62-35-1609CH2
<b>Company:</b>	Bill Barrett Corp.	<b>TVD Reference:</b>	WELL @ 4663.00usft (Original Well Elev)
<b>Project:</b>	Weld Co., CO	<b>MD Reference:</b>	WELL @ 4663.00usft (Original Well Elev)
<b>Site:</b>	Sec.35-T5N-R62W	<b>North Reference:</b>	True
<b>Well:</b>	Anschutz State 5-62-35-1609CH2	<b>Survey Calculation Method:</b>	Minimum Curvature
<b>Wellbore:</b>	Wellbore #1		
<b>Design:</b>	Design #1		

Planned Survey									
Measured Depth (usft)	Inclination (°)	Azimuth (°)	Vertical Depth (usft)	+N/-S (usft)	+E/-W (usft)	Vertical Section (usft)	Dogleg Rate (°/100usft)	Build Rate (°/100usft)	Turn Rate (°/100usft)

Design Targets									
Target Name	Dip Angle (°)	Dip Dir. (°)	TVD (usft)	+N/-S (usft)	+E/-W (usft)	Northing (usft)	Easting (usft)	Latitude	Longitude
- hit/miss target									
- Shape									
Anschutz State 5-62-35-	0.00	0.00	6,250.00	380.12	9,889.58	1,377,154.444	3,344,609.042	40° 21' 43.538 N	104° 15' 47.959 W
- plan hits target center									
- Point									

Casing Points					
Measured Depth (usft)	Vertical Depth (usft)	Name	Casing Diameter (")	Hole Diameter (")	
6,602.06	6,313.00	7" Csg.	7	8-3/4	

Formations						
Measured Depth (usft)	Vertical Depth (usft)	Name	Lithology	Dip (°)	Dip Direction (°)	
4,175.58	4,164.00	Sussex		-0.37	88.68	
4,711.56	4,698.00	Shannon		-0.37	88.68	
6,013.42	5,995.00	Sharon Springs		-0.37	88.64	
6,144.27	6,111.00	Niobrara		-0.37	88.68	
6,203.16	6,157.00	A Chalk		-0.37	88.68	
6,292.05	6,217.00	B Chalk		-0.37	88.68	
6,459.40	6,293.00	Top C Target		-0.37	88.68	

Plan Annotations					
Measured Depth (usft)	Vertical Depth (usft)	Local Coordinates		Comment	
		+N/-S (usft)	+E/-W (usft)		
900.00	900.00	0.00	0.00	Start Build 2.00	
1,130.60	1,130.35	3.97	-8.39	Start 3987.76 hold at 1130.60 MD	
5,118.35	5,105.19	141.07	-298.23	Start Drop -2.00	
5,348.95	5,335.54	145.04	-306.62	Start 500.01 hold at 5348.95 MD	
5,848.96	5,835.55	145.04	-306.62	Start Build 12.00	
6,602.06	6,313.00	156.12	173.81	Start 9718.55 hold at 6602.06 MD	
16,320.61	6,250.00	380.12	9,889.58	TD at 16320.61	