



Bill Barrett Corporation

Bill Barrett Corp.

Weld Co., CO

Sec.35-T5N-R62W

Anschutz State 5-62-35-0108BH2

Wellbore #1

Plan: Design #1

Standard Planning Report

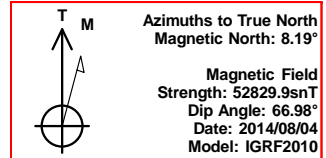
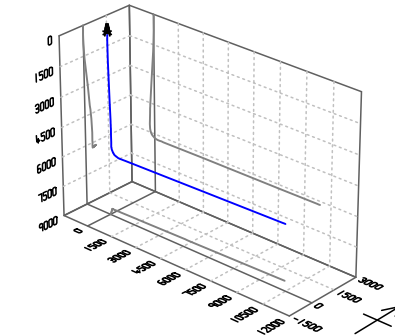
04 August, 2014

Archer



Bill Barrett Corp.
Project: Weld Co., CO
Site: Sec.35-T5N-R62W
Well: Anschutz State 5-62-35-0108BH2
Wellbore: Wellbore #1
Design: Design #1
Lat: 40° 21' 39.949 N
Long: 104° 17' 55.720 W
Pad GL: 4640.00
KB: WELL @ 4663.00usft (Original Well Elev)

Archer



SECTION DETAILS

MD	Inc	Azi	TVD	+N/-S	+E/-W	Dleg	TFace	VSec	Annotation
0.00	0.00	0.00	0.00	0.00	0.00	0.00	0.00	0.00	
900.00	0.00	0.00	900.00	0.00	0.00	0.00	0.00	0.00	Start Build 2.00
1277.94	7.56	325.27	1276.84	20.46	-14.18	2.00	325.27	-13.71	Start 3646.54 hold at 1277.94 MD
4924.48	7.56	325.27	4891.70	414.70	-287.43	0.00	0.00	-277.80	Start Drop -2.00
5302.42	0.00	0.00	5268.54	435.16	-301.61	2.00	180.00	-291.51	Start 500.01 hold at 5302.42 MD
5802.43	0.00	0.00	5768.55	435.16	-301.61	0.00	0.00	-291.51	Start Build 12.00
6555.62	90.38	88.68	6246.00	446.24	178.92	12.00	88.68	189.16	Start 9710.27 hold at 6555.62 MD
16265.89	90.38	88.68	6181.00	670.10	9886.39	0.00	0.00	9899.21	TD at 16265.89

WELL DETAILS: Anschutz State 5-62-35-0108BH2

+N/-S	+E/-W	Northing	Ground Level: Easting	4640.00 Latitude	Longitude	Slot
0.00	0.00	1376655.329	3334725.316	40° 21' 39.949 N	104° 17' 55.720 W	

PROJECT DETAILS: Weld Co., CO

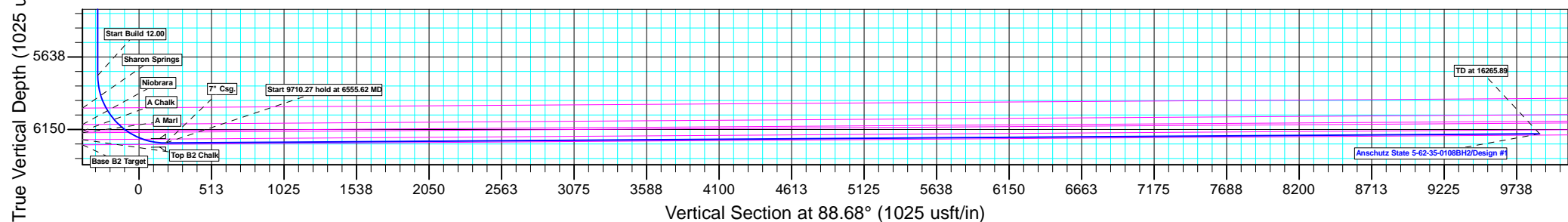
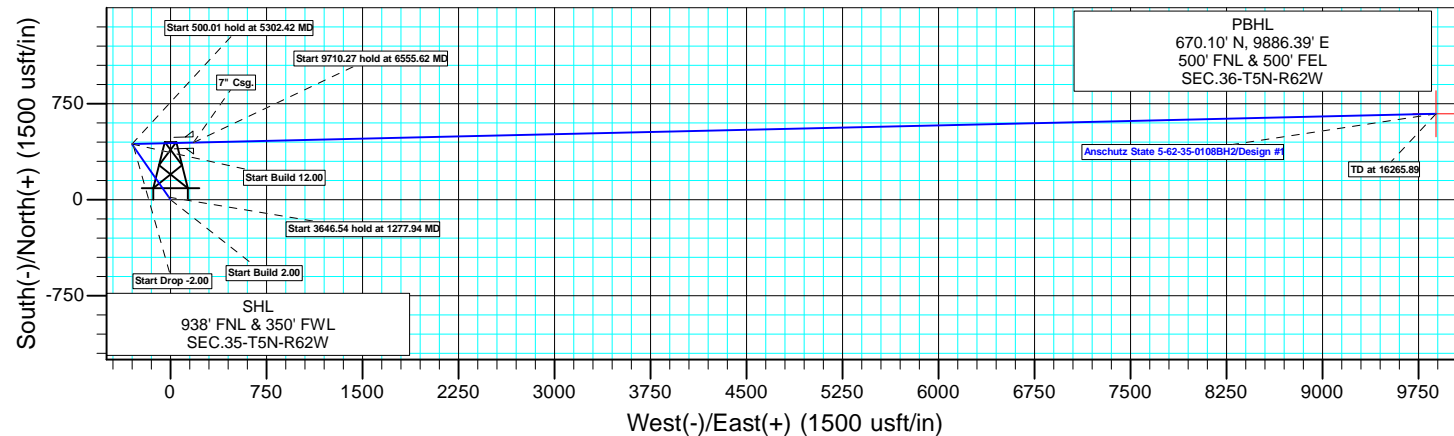
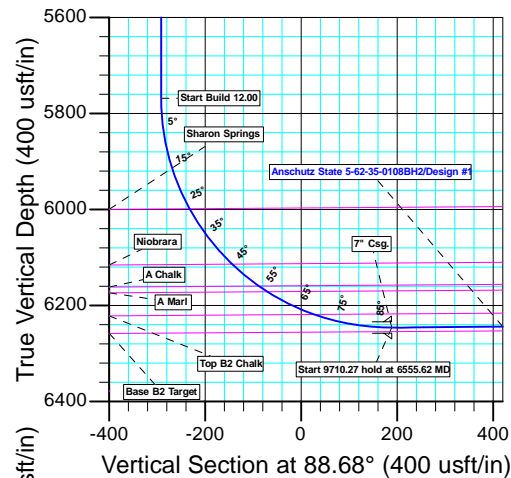
Geodetic System: US State Plane 1983
Datum: North American Datum 1983
Ellipsoid: GRS 1980
Zone: Colorado Northern Zone
System Datum: Mean Sea Level

CASING DETAILS

TVD	MD	Name
6246.00	6555.62	7" Csg.

WELLBORE TARGET DETAILS (LAT/LONG)

Name	TVD	+N/-S	+E/-W	Latitude	Longitude	Shape Point
Anschutz State 5-62-35-0108BH2 tgt	6181.00	670.10	9886.39	40° 21' 46.552 N	104° 15' 47.999 W	



Plan: Design #1 (Anschutz State 5-62-35-0108BH2/Wellbore #1)

Created By: Ricky Osburn Date: 13:50, August 04 2014

Database:	EDMDBBW	Local Co-ordinate Reference:	Well Anschutz State 5-62-35-0108BH2
Company:	Bill Barrett Corp.	TVD Reference:	WELL @ 4663.00usft (Original Well Elev)
Project:	Weld Co., CO	MD Reference:	WELL @ 4663.00usft (Original Well Elev)
Site:	Sec.35-T5N-R62W	North Reference:	True
Well:	Anschutz State 5-62-35-0108BH2	Survey Calculation Method:	Minimum Curvature
Wellbore:	Wellbore #1		
Design:	Design #1		

Project	Weld Co., CO		
Map System:	US State Plane 1983	System Datum:	Mean Sea Level
Geo Datum:	North American Datum 1983		
Map Zone:	Colorado Northern Zone		

Site		Sec.35-T5N-R62W			
Site Position:		Northing:	1,375,286.395 usft	Latitude:	40° 21' 26.420 N
From:	Lat/Long	Easting:	3,334,739.959 usft	Longitude:	104° 17' 55.770 W
Position Uncertainty:	0.00 usft	Slot Radius:	13-3/16"	Grid Convergence:	0.78 °

Well	Anschutz State 5-62-35-0108BH2					
Well Position	+N/-S	1,369.01 usft	Northing:	1,376,655.329 usft	Latitude:	40° 21' 39.949 N
	+E/-W	3.90 usft	Easting:	3,334,725.316 usft	Longitude:	104° 17' 55.720 W
Position Uncertainty		0.00 usft	Wellhead Elevation:	usft	Ground Level:	4,640.00 usft

Wellbore	Wellbore #1				
Magnetics	Model Name	Sample Date	Declination (°)	Dip Angle (°)	Field Strength (nT)
	IGRF2010	2014/08/04	8.19	66.98	52,830

Design	Design #1			
Audit Notes:				
Version:	Phase:	PLAN	Tie On Depth:	0.00
Vertical Section:	Depth From (TVD) (usft)	+N/-S (usft)	+E/-W (usft)	Direction (°)
	0.00	0.00	0.00	88.68

Plan Sections										
Measured Depth (usft)	Inclination (°)	Azimuth (°)	Vertical Depth (usft)	+N/-S (usft)	+E/-W (usft)	Dogleg Rate (°/100usft)	Build Rate (°/100usft)	Turn Rate (°/100usft)	TFO (°)	Target
0.00	0.00	0.00	0.00	0.00	0.00	0.00	0.00	0.00	0.00	
900.00	0.00	0.00	900.00	0.00	0.00	0.00	0.00	0.00	0.00	
1,277.94	7.56	325.27	1,276.84	20.46	-14.18	2.00	2.00	0.00	325.27	
4,924.48	7.56	325.27	4,891.70	414.70	-287.43	0.00	0.00	0.00	0.00	
5,302.42	0.00	0.00	5,268.54	435.16	-301.61	2.00	-2.00	0.00	180.00	
5,802.43	0.00	0.00	5,768.55	435.16	-301.61	0.00	0.00	0.00	0.00	
6,555.62	90.38	88.68	6,246.00	446.24	178.92	12.00	12.00	0.00	88.68	Anschutz State 5-62-35-0108BH2
16,265.89	90.38	88.68	6,181.00	670.10	9,886.39	0.00	0.00	0.00	0.00	Anschutz State 5-62-35-0108BH2

Database:	EDMDBBW	Local Co-ordinate Reference:	Well Anschutz State 5-62-35-0108BH2
Company:	Bill Barrett Corp.	TVD Reference:	WELL @ 4663.00usft (Original Well Elev)
Project:	Weld Co., CO	MD Reference:	WELL @ 4663.00usft (Original Well Elev)
Site:	Sec.35-T5N-R62W	North Reference:	True
Well:	Anschutz State 5-62-35-0108BH2	Survey Calculation Method:	Minimum Curvature
Wellbore:	Wellbore #1		
Design:	Design #1		

Planned Survey									
Measured Depth (usft)	Inclination (°)	Azimuth (°)	Vertical Depth (usft)	+N/-S (usft)	+E/-W (usft)	Vertical Section (usft)	Dogleg Rate (°/100usft)	Build Rate (°/100usft)	Turn Rate (°/100usft)
0.00	0.00	0.00	0.00	0.00	0.00	0.00	0.00	0.00	0.00
100.00	0.00	0.00	100.00	0.00	0.00	0.00	0.00	0.00	0.00
200.00	0.00	0.00	200.00	0.00	0.00	0.00	0.00	0.00	0.00
300.00	0.00	0.00	300.00	0.00	0.00	0.00	0.00	0.00	0.00
400.00	0.00	0.00	400.00	0.00	0.00	0.00	0.00	0.00	0.00
500.00	0.00	0.00	500.00	0.00	0.00	0.00	0.00	0.00	0.00
600.00	0.00	0.00	600.00	0.00	0.00	0.00	0.00	0.00	0.00
700.00	0.00	0.00	700.00	0.00	0.00	0.00	0.00	0.00	0.00
800.00	0.00	0.00	800.00	0.00	0.00	0.00	0.00	0.00	0.00
Start Build 2.00									
900.00	0.00	0.00	900.00	0.00	0.00	0.00	0.00	0.00	0.00
1,000.00	2.00	325.27	999.98	1.43	-0.99	-0.96	2.00	2.00	0.00
1,100.00	4.00	325.27	1,099.84	5.74	-3.98	-3.84	2.00	2.00	0.00
1,200.00	6.00	325.27	1,199.45	12.90	-8.94	-8.64	2.00	2.00	0.00
Start 3646.54 hold at 1277.94 MD									
1,277.94	7.56	325.27	1,276.84	20.46	-14.18	-13.71	2.00	2.00	0.00
1,300.00	7.56	325.27	1,298.71	22.84	-15.83	-15.30	0.00	0.00	0.00
1,400.00	7.56	325.27	1,397.84	33.66	-23.33	-22.55	0.00	0.00	0.00
1,500.00	7.56	325.27	1,496.98	44.47	-30.82	-29.79	0.00	0.00	0.00
1,600.00	7.56	325.27	1,596.11	55.28	-38.31	-37.03	0.00	0.00	0.00
1,700.00	7.56	325.27	1,695.24	66.09	-45.81	-44.27	0.00	0.00	0.00
1,800.00	7.56	325.27	1,794.37	76.90	-53.30	-51.52	0.00	0.00	0.00
1,900.00	7.56	325.27	1,893.50	87.71	-60.79	-58.76	0.00	0.00	0.00
2,000.00	7.56	325.27	1,992.63	98.52	-68.29	-66.00	0.00	0.00	0.00
2,100.00	7.56	325.27	2,091.76	109.34	-75.78	-73.24	0.00	0.00	0.00
2,200.00	7.56	325.27	2,190.89	120.15	-83.27	-80.48	0.00	0.00	0.00
2,300.00	7.56	325.27	2,290.02	130.96	-90.77	-87.73	0.00	0.00	0.00
2,400.00	7.56	325.27	2,389.15	141.77	-98.26	-94.97	0.00	0.00	0.00
2,500.00	7.56	325.27	2,488.29	152.58	-105.75	-102.21	0.00	0.00	0.00
2,600.00	7.56	325.27	2,587.42	163.39	-113.25	-109.45	0.00	0.00	0.00
2,700.00	7.56	325.27	2,686.55	174.20	-120.74	-116.70	0.00	0.00	0.00
2,800.00	7.56	325.27	2,785.68	185.02	-128.23	-123.94	0.00	0.00	0.00
2,900.00	7.56	325.27	2,884.81	195.83	-135.73	-131.18	0.00	0.00	0.00
3,000.00	7.56	325.27	2,983.94	206.64	-143.22	-138.42	0.00	0.00	0.00
3,100.00	7.56	325.27	3,083.07	217.45	-150.71	-145.67	0.00	0.00	0.00
3,200.00	7.56	325.27	3,182.20	228.26	-158.21	-152.91	0.00	0.00	0.00
3,300.00	7.56	325.27	3,281.33	239.07	-165.70	-160.15	0.00	0.00	0.00
3,400.00	7.56	325.27	3,380.46	249.88	-173.19	-167.39	0.00	0.00	0.00
3,500.00	7.56	325.27	3,479.60	260.69	-180.69	-174.63	0.00	0.00	0.00
3,600.00	7.56	325.27	3,578.73	271.51	-188.18	-181.88	0.00	0.00	0.00
3,700.00	7.56	325.27	3,677.86	282.32	-195.67	-189.12	0.00	0.00	0.00
3,800.00	7.56	325.27	3,776.99	293.13	-203.17	-196.36	0.00	0.00	0.00
3,900.00	7.56	325.27	3,876.12	303.94	-210.66	-203.60	0.00	0.00	0.00
4,000.00	7.56	325.27	3,975.25	314.75	-218.15	-210.85	0.00	0.00	0.00
4,100.00	7.56	325.27	4,074.38	325.56	-225.65	-218.09	0.00	0.00	0.00
Sussex									
4,193.93	7.56	325.27	4,167.49	335.72	-232.69	-224.89	0.00	0.00	0.00
4,200.00	7.56	325.27	4,173.51	336.37	-233.14	-225.33	0.00	0.00	0.00
4,300.00	7.56	325.27	4,272.64	347.19	-240.63	-232.57	0.00	0.00	0.00
4,400.00	7.56	325.27	4,371.78	358.00	-248.13	-239.82	0.00	0.00	0.00
4,500.00	7.56	325.27	4,470.91	368.81	-255.62	-247.06	0.00	0.00	0.00
4,600.00	7.56	325.27	4,570.04	379.62	-263.11	-254.30	0.00	0.00	0.00
4,700.00	7.56	325.27	4,669.17	390.43	-270.61	-261.54	0.00	0.00	0.00

Database:	EDMDBBW	Local Co-ordinate Reference:	Well Anschutz State 5-62-35-0108BH2
Company:	Bill Barrett Corp.	TVD Reference:	WELL @ 4663.00usft (Original Well Elev)
Project:	Weld Co., CO	MD Reference:	WELL @ 4663.00usft (Original Well Elev)
Site:	Sec.35-T5N-R62W	North Reference:	True
Well:	Anschutz State 5-62-35-0108BH2	Survey Calculation Method:	Minimum Curvature
Wellbore:	Wellbore #1		
Design:	Design #1		

Planned Survey									
Measured Depth (usft)	Inclination (°)	Azimuth (°)	Vertical Depth (usft)	+N/-S (usft)	+E/-W (usft)	Vertical Section (usft)	Dogleg Rate (°/100usft)	Build Rate (°/100usft)	Turn Rate (°/100usft)
Shannon									
4,732.87	7.56	325.27	4,701.75	393.98	-273.07	-263.92	0.00	0.00	0.00
4,800.00	7.56	325.27	4,768.30	401.24	-278.10	-268.78	0.00	0.00	0.00
4,900.00	7.56	325.27	4,867.43	412.05	-285.59	-276.03	0.00	0.00	0.00
Start Drop -2.00									
4,924.48	7.56	325.27	4,891.70	414.70	-287.43	-277.80	0.00	0.00	0.00
5,000.00	6.05	325.27	4,966.68	422.05	-292.53	-282.73	2.00	-2.00	0.00
5,100.00	4.05	325.27	5,066.29	429.29	-297.54	-287.57	2.00	-2.00	0.00
5,200.00	2.05	325.27	5,166.14	433.66	-300.57	-290.50	2.00	-2.00	0.00
Start 500.01 hold at 5302.42 MD									
5,302.42	0.00	0.00	5,268.54	435.16	-301.61	-291.51	2.00	-2.00	0.00
5,400.00	0.00	0.00	5,366.12	435.16	-301.61	-291.51	0.00	0.00	0.00
5,500.00	0.00	0.00	5,466.12	435.16	-301.61	-291.51	0.00	0.00	0.00
5,600.00	0.00	0.00	5,566.12	435.16	-301.61	-291.51	0.00	0.00	0.00
5,700.00	0.00	0.00	5,666.12	435.16	-301.61	-291.51	0.00	0.00	0.00
Start Build 12.00									
5,802.43	0.00	0.00	5,768.55	435.16	-301.61	-291.51	0.00	0.00	0.00
5,825.00	2.71	88.68	5,791.11	435.17	-301.08	-290.97	12.00	12.00	0.00
5,850.00	5.71	88.68	5,816.04	435.21	-299.24	-289.14	12.00	12.00	0.00
5,875.00	8.71	88.68	5,840.84	435.29	-296.11	-286.00	12.00	12.00	0.00
5,900.00	11.71	88.68	5,865.44	435.39	-291.68	-281.57	12.00	12.00	0.00
5,925.00	14.71	88.68	5,889.78	435.52	-285.97	-275.86	12.00	12.00	0.00
5,950.00	17.71	88.68	5,913.78	435.68	-278.99	-268.88	12.00	12.00	0.00
5,975.00	20.71	88.68	5,937.39	435.87	-270.77	-260.66	12.00	12.00	0.00
6,000.00	23.71	88.68	5,960.53	436.09	-261.32	-251.21	12.00	12.00	0.00
6,025.00	26.71	88.68	5,983.15	436.33	-250.68	-240.56	12.00	12.00	0.00
Sharon Springs									
6,042.39	28.80	88.68	5,998.54	436.52	-242.58	-232.46	12.00	12.00	0.00
6,050.00	29.71	88.68	6,005.18	436.61	-238.87	-228.75	12.00	12.00	0.00
6,075.00	32.71	88.68	6,026.56	436.91	-225.92	-215.79	12.00	12.00	0.00
6,100.00	35.71	88.68	6,047.23	437.23	-211.87	-201.74	12.00	12.00	0.00
6,125.00	38.71	88.68	6,067.14	437.58	-196.76	-186.62	12.00	12.00	0.00
6,150.00	41.71	88.68	6,086.23	437.95	-180.62	-170.49	12.00	12.00	0.00
6,175.00	44.71	88.68	6,104.45	438.34	-163.51	-153.37	12.00	12.00	0.00
Niobrara									
6,188.57	46.34	88.68	6,113.95	438.57	-153.83	-143.69	12.00	12.00	0.00
6,200.00	47.71	88.68	6,121.75	438.76	-145.47	-135.33	12.00	12.00	0.00
6,225.00	50.71	88.68	6,138.08	439.20	-126.55	-116.40	12.00	12.00	0.00
6,250.00	53.71	88.68	6,153.40	439.65	-106.80	-96.65	12.00	12.00	0.00
A Chalk									
6,260.62	54.98	88.68	6,159.58	439.85	-98.18	-88.02	12.00	12.00	0.00
6,275.00	56.71	88.68	6,167.66	440.13	-86.28	-76.12	12.00	12.00	0.00
A Marl									
6,282.02	57.55	88.68	6,171.47	440.26	-80.39	-70.23	12.00	12.00	0.00
6,300.00	59.71	88.68	6,180.83	440.62	-65.04	-54.87	12.00	12.00	0.00
6,325.00	62.71	88.68	6,192.87	441.12	-43.14	-32.97	12.00	12.00	0.00
6,350.00	65.71	88.68	6,203.74	441.64	-20.64	-10.46	12.00	12.00	0.00
6,375.00	68.71	88.68	6,213.43	442.17	2.40	12.59	12.00	12.00	0.00
Top B2 Chalk									
6,390.50	70.57	88.68	6,218.82	442.51	16.93	27.12	12.00	12.00	0.00
6,400.00	71.71	88.68	6,221.89	442.71	25.92	36.11	12.00	12.00	0.00
6,425.00	74.71	88.68	6,229.11	443.26	49.84	60.04	12.00	12.00	0.00
6,450.00	77.71	88.68	6,235.07	443.82	74.11	84.32	12.00	12.00	0.00

Database:	EDMDBBW	Local Co-ordinate Reference:	Well Anschutz State 5-62-35-0108BH2
Company:	Bill Barrett Corp.	TVD Reference:	WELL @ 4663.00usft (Original Well Elev)
Project:	Weld Co., CO	MD Reference:	WELL @ 4663.00usft (Original Well Elev)
Site:	Sec.35-T5N-R62W	North Reference:	True
Well:	Anschutz State 5-62-35-0108BH2	Survey Calculation Method:	Minimum Curvature
Wellbore:	Wellbore #1		
Design:	Design #1		

Planned Survey									
Measured Depth (usft)	Inclination (°)	Azimuth (°)	Vertical Depth (usft)	+N/-S (usft)	+E/-W (usft)	Vertical Section (usft)	Dogleg Rate (°/100usft)	Build Rate (°/100usft)	Turn Rate (°/100usft)
6,475.00	80.71	88.68	6,239.75	444.39	98.66	108.87	12.00	12.00	0.00
6,500.00	83.71	88.68	6,243.14	444.96	123.42	133.64	12.00	12.00	0.00
6,525.00	86.71	88.68	6,245.23	445.54	148.32	158.55	12.00	12.00	0.00
6,550.00	89.71	88.68	6,246.01	446.11	173.30	183.53	12.00	12.00	0.00
Start 9710.27 hold at 6555.62 MD - 7" Csg.									
6,555.62	90.38	88.68	6,246.00	446.24	178.92	189.15	12.00	12.00	0.00
6,600.00	90.38	88.68	6,245.71	447.26	223.29	233.53	0.00	0.00	0.00
6,700.00	90.38	88.68	6,245.04	449.57	323.26	333.53	0.00	0.00	0.00
6,800.00	90.38	88.68	6,244.37	451.88	423.23	433.53	0.00	0.00	0.00
6,900.00	90.38	88.68	6,243.70	454.18	523.20	533.52	0.00	0.00	0.00
7,000.00	90.38	88.68	6,243.03	456.49	623.17	633.52	0.00	0.00	0.00
7,100.00	90.38	88.68	6,242.36	458.79	723.14	733.52	0.00	0.00	0.00
7,200.00	90.38	88.68	6,241.69	461.10	823.11	833.52	0.00	0.00	0.00
7,300.00	90.38	88.68	6,241.02	463.40	923.09	933.52	0.00	0.00	0.00
7,400.00	90.38	88.68	6,240.35	465.71	1,023.06	1,033.51	0.00	0.00	0.00
7,500.00	90.38	88.68	6,239.68	468.01	1,123.03	1,133.51	0.00	0.00	0.00
7,600.00	90.38	88.68	6,239.01	470.32	1,223.00	1,233.51	0.00	0.00	0.00
7,700.00	90.38	88.68	6,238.34	472.62	1,322.97	1,333.51	0.00	0.00	0.00
7,800.00	90.38	88.68	6,237.67	474.93	1,422.94	1,433.50	0.00	0.00	0.00
7,900.00	90.38	88.68	6,237.00	477.23	1,522.91	1,533.50	0.00	0.00	0.00
8,000.00	90.38	88.68	6,236.34	479.54	1,622.88	1,633.50	0.00	0.00	0.00
8,100.00	90.38	88.68	6,235.67	481.85	1,722.85	1,733.50	0.00	0.00	0.00
8,200.00	90.38	88.68	6,235.00	484.15	1,822.83	1,833.49	0.00	0.00	0.00
8,300.00	90.38	88.68	6,234.33	486.46	1,922.80	1,933.49	0.00	0.00	0.00
8,400.00	90.38	88.68	6,233.66	488.76	2,022.77	2,033.49	0.00	0.00	0.00
8,500.00	90.38	88.68	6,232.99	491.07	2,122.74	2,133.49	0.00	0.00	0.00
8,600.00	90.38	88.68	6,232.32	493.37	2,222.71	2,233.49	0.00	0.00	0.00
8,700.00	90.38	88.68	6,231.65	495.68	2,322.68	2,333.48	0.00	0.00	0.00
8,800.00	90.38	88.68	6,230.98	497.98	2,422.65	2,433.48	0.00	0.00	0.00
8,900.00	90.38	88.68	6,230.31	500.29	2,522.62	2,533.48	0.00	0.00	0.00
9,000.00	90.38	88.68	6,229.64	502.59	2,622.60	2,633.48	0.00	0.00	0.00
9,100.00	90.38	88.68	6,228.97	504.90	2,722.57	2,733.47	0.00	0.00	0.00
9,200.00	90.38	88.68	6,228.30	507.20	2,822.54	2,833.47	0.00	0.00	0.00
9,300.00	90.38	88.68	6,227.63	509.51	2,922.51	2,933.47	0.00	0.00	0.00
9,400.00	90.38	88.68	6,226.96	511.82	3,022.48	3,033.47	0.00	0.00	0.00
9,500.00	90.38	88.68	6,226.29	514.12	3,122.45	3,133.47	0.00	0.00	0.00
9,600.00	90.38	88.68	6,225.62	516.43	3,222.42	3,233.46	0.00	0.00	0.00
9,700.00	90.38	88.68	6,224.96	518.73	3,322.39	3,333.46	0.00	0.00	0.00
9,800.00	90.38	88.68	6,224.29	521.04	3,422.36	3,433.46	0.00	0.00	0.00
9,900.00	90.38	88.68	6,223.62	523.34	3,522.34	3,533.46	0.00	0.00	0.00
10,000.00	90.38	88.68	6,222.95	525.65	3,622.31	3,633.45	0.00	0.00	0.00
10,100.00	90.38	88.68	6,222.28	527.95	3,722.28	3,733.45	0.00	0.00	0.00
10,200.00	90.38	88.68	6,221.61	530.26	3,822.25	3,833.45	0.00	0.00	0.00
10,300.00	90.38	88.68	6,220.94	532.56	3,922.22	3,933.45	0.00	0.00	0.00
10,400.00	90.38	88.68	6,220.27	534.87	4,022.19	4,033.45	0.00	0.00	0.00
10,500.00	90.38	88.68	6,219.60	537.17	4,122.16	4,133.44	0.00	0.00	0.00
10,600.00	90.38	88.68	6,218.93	539.48	4,222.13	4,233.44	0.00	0.00	0.00
10,700.00	90.38	88.68	6,218.26	541.79	4,322.11	4,333.44	0.00	0.00	0.00
10,800.00	90.38	88.68	6,217.59	544.09	4,422.08	4,433.44	0.00	0.00	0.00
10,900.00	90.38	88.68	6,216.92	546.40	4,522.05	4,533.43	0.00	0.00	0.00
11,000.00	90.38	88.68	6,216.25	548.70	4,622.02	4,633.43	0.00	0.00	0.00
11,100.00	90.38	88.68	6,215.58	551.01	4,721.99	4,733.43	0.00	0.00	0.00
11,200.00	90.38	88.68	6,214.91	553.31	4,821.96	4,833.43	0.00	0.00	0.00

Database:	EDMDBBW	Local Co-ordinate Reference:	Well Anschutz State 5-62-35-0108BH2
Company:	Bill Barrett Corp.	TVD Reference:	WELL @ 4663.00usft (Original Well Elev)
Project:	Weld Co., CO	MD Reference:	WELL @ 4663.00usft (Original Well Elev)
Site:	Sec.35-T5N-R62W	North Reference:	True
Well:	Anschutz State 5-62-35-0108BH2	Survey Calculation Method:	Minimum Curvature
Wellbore:	Wellbore #1		
Design:	Design #1		

Planned Survey									
Measured Depth (usft)	Inclination (°)	Azimuth (°)	Vertical Depth (usft)	+N/-S (usft)	+E/-W (usft)	Vertical Section (usft)	Dogleg Rate (°/100usft)	Build Rate (°/100usft)	Turn Rate (°/100usft)
11,300.00	90.38	88.68	6,214.24	555.62	4,921.93	4,933.43	0.00	0.00	0.00
11,400.00	90.38	88.68	6,213.58	557.92	5,021.90	5,033.42	0.00	0.00	0.00
11,500.00	90.38	88.68	6,212.91	560.23	5,121.87	5,133.42	0.00	0.00	0.00
11,600.00	90.38	88.68	6,212.24	562.53	5,221.85	5,233.42	0.00	0.00	0.00
11,700.00	90.38	88.68	6,211.57	564.84	5,321.82	5,333.42	0.00	0.00	0.00
11,800.00	90.38	88.68	6,210.90	567.14	5,421.79	5,433.41	0.00	0.00	0.00
11,900.00	90.38	88.68	6,210.23	569.45	5,521.76	5,533.41	0.00	0.00	0.00
12,000.00	90.38	88.68	6,209.56	571.76	5,621.73	5,633.41	0.00	0.00	0.00
12,100.00	90.38	88.68	6,208.89	574.06	5,721.70	5,733.41	0.00	0.00	0.00
12,200.00	90.38	88.68	6,208.22	576.37	5,821.67	5,833.41	0.00	0.00	0.00
12,300.00	90.38	88.68	6,207.55	578.67	5,921.64	5,933.40	0.00	0.00	0.00
12,400.00	90.38	88.68	6,206.88	580.98	6,021.62	6,033.40	0.00	0.00	0.00
12,500.00	90.38	88.68	6,206.21	583.28	6,121.59	6,133.40	0.00	0.00	0.00
12,600.00	90.38	88.68	6,205.54	585.59	6,221.56	6,233.40	0.00	0.00	0.00
12,700.00	90.38	88.68	6,204.87	587.89	6,321.53	6,333.39	0.00	0.00	0.00
12,800.00	90.38	88.68	6,204.20	590.20	6,421.50	6,433.39	0.00	0.00	0.00
12,900.00	90.38	88.68	6,203.53	592.50	6,521.47	6,533.39	0.00	0.00	0.00
13,000.00	90.38	88.68	6,202.86	594.81	6,621.44	6,633.39	0.00	0.00	0.00
13,100.00	90.38	88.68	6,202.20	597.11	6,721.41	6,733.39	0.00	0.00	0.00
13,200.00	90.38	88.68	6,201.53	599.42	6,821.38	6,833.38	0.00	0.00	0.00
13,300.00	90.38	88.68	6,200.86	601.73	6,921.36	6,933.38	0.00	0.00	0.00
13,400.00	90.38	88.68	6,200.19	604.03	7,021.33	7,033.38	0.00	0.00	0.00
13,500.00	90.38	88.68	6,199.52	606.34	7,121.30	7,133.38	0.00	0.00	0.00
13,600.00	90.38	88.68	6,198.85	608.64	7,221.27	7,233.37	0.00	0.00	0.00
13,700.00	90.38	88.68	6,198.18	610.95	7,321.24	7,333.37	0.00	0.00	0.00
13,800.00	90.38	88.68	6,197.51	613.25	7,421.21	7,433.37	0.00	0.00	0.00
13,900.00	90.38	88.68	6,196.84	615.56	7,521.18	7,533.37	0.00	0.00	0.00
14,000.00	90.38	88.68	6,196.17	617.86	7,621.15	7,633.37	0.00	0.00	0.00
14,100.00	90.38	88.68	6,195.50	620.17	7,721.13	7,733.36	0.00	0.00	0.00
14,200.00	90.38	88.68	6,194.83	622.47	7,821.10	7,833.36	0.00	0.00	0.00
14,300.00	90.38	88.68	6,194.16	624.78	7,921.07	7,933.36	0.00	0.00	0.00
14,400.00	90.38	88.68	6,193.49	627.08	8,021.04	8,033.36	0.00	0.00	0.00
14,500.00	90.38	88.68	6,192.82	629.39	8,121.01	8,133.35	0.00	0.00	0.00
14,600.00	90.38	88.68	6,192.15	631.70	8,220.98	8,233.35	0.00	0.00	0.00
14,700.00	90.38	88.68	6,191.48	634.00	8,320.95	8,333.35	0.00	0.00	0.00
14,800.00	90.38	88.68	6,190.81	636.31	8,420.92	8,433.35	0.00	0.00	0.00
14,900.00	90.38	88.68	6,190.15	638.61	8,520.89	8,533.34	0.00	0.00	0.00
15,000.00	90.38	88.68	6,189.48	640.92	8,620.87	8,633.34	0.00	0.00	0.00
15,100.00	90.38	88.68	6,188.81	643.22	8,720.84	8,733.34	0.00	0.00	0.00
15,200.00	90.38	88.68	6,188.14	645.53	8,820.81	8,833.34	0.00	0.00	0.00
15,300.00	90.38	88.68	6,187.47	647.83	8,920.78	8,933.34	0.00	0.00	0.00
15,400.00	90.38	88.68	6,186.80	650.14	9,020.75	9,033.33	0.00	0.00	0.00
15,500.00	90.38	88.68	6,186.13	652.44	9,120.72	9,133.33	0.00	0.00	0.00
15,600.00	90.38	88.68	6,185.46	654.75	9,220.69	9,233.33	0.00	0.00	0.00
15,700.00	90.38	88.68	6,184.79	657.05	9,320.66	9,333.33	0.00	0.00	0.00
15,800.00	90.38	88.68	6,184.12	659.36	9,420.64	9,433.32	0.00	0.00	0.00
15,900.00	90.38	88.68	6,183.45	661.67	9,520.61	9,533.32	0.00	0.00	0.00
16,000.00	90.38	88.68	6,182.78	663.97	9,620.58	9,633.32	0.00	0.00	0.00
16,100.00	90.38	88.68	6,182.11	666.28	9,720.55	9,733.32	0.00	0.00	0.00
16,200.00	90.38	88.68	6,181.44	668.58	9,820.52	9,833.32	0.00	0.00	0.00
TD at 16265.89									
16,265.89	90.38	88.68	6,181.00	670.10	9,886.39	9,899.21	0.00	0.00	0.00

Database:	EDMDBBW	Local Co-ordinate Reference:	Well Anschutz State 5-62-35-0108BH2
Company:	Bill Barrett Corp.	TVD Reference:	WELL @ 4663.00usft (Original Well Elev)
Project:	Weld Co., CO	MD Reference:	WELL @ 4663.00usft (Original Well Elev)
Site:	Sec.35-T5N-R62W	North Reference:	True
Well:	Anschutz State 5-62-35-0108BH2	Survey Calculation Method:	Minimum Curvature
Wellbore:	Wellbore #1		
Design:	Design #1		

Design Targets									
Target Name	Dip Angle	Dip Dir.	TVD	+N/-S	+E/-W	Northing	Easting	Latitude	Longitude
- hit/miss target	(°)	(°)	(usft)	(usft)	(usft)	(usft)	(usft)		
- Shape									
Anschutz State 5-62-35- - plan hits target center - Point	0.00	0.00	6,181.00	670.10	9,886.39	1,377,459.286	3,344,601.725	40° 21' 46.552 N	104° 15' 47.999 W

Casing Points					
Measured Depth	Vertical Depth	Name		Casing Diameter	Hole Diameter
(usft)	(usft)			(")	(")
6,555.62	6,246.00	7" Csg.		7	8-3/4

Formations						
Measured Depth	Vertical Depth	Name		Lithology	Dip	Dip Direction
(usft)	(usft)				(°)	(°)
4,193.93	4,166.00	Sussex			-0.38	88.68
4,732.87	4,700.00	Shannon			-0.38	88.68
6,042.39	5,997.00	Sharon Springs			-0.38	88.64
6,188.57	6,113.00	Niobrara			-0.38	88.68
6,260.62	6,159.00	A Chalk			-0.38	88.68
6,282.02	6,171.00	A Marl			-0.38	88.68
6,390.50	6,219.00	Top B2 Chalk			-0.38	88.68

Plan Annotations					
Measured Depth	Vertical Depth	Local Coordinates		Comment	
(usft)	(usft)	+N/-S (usft)	+E/-W (usft)		
900.00	900.00	0.00	0.00	Start Build 2.00	
1,277.94	1,276.84	20.46	-14.18	Start 3646.54 hold at 1277.94 MD	
4,924.48	4,891.70	414.70	-287.43	Start Drop -2.00	
5,302.42	5,268.54	435.16	-301.61	Start 500.01 hold at 5302.42 MD	
5,802.43	5,768.55	435.16	-301.61	Start Build 12.00	
6,555.62	6,246.00	446.24	178.92	Start 9710.27 hold at 6555.62 MD	
16,265.89	6,181.00	670.10	9,886.39	TD at 16265.89	