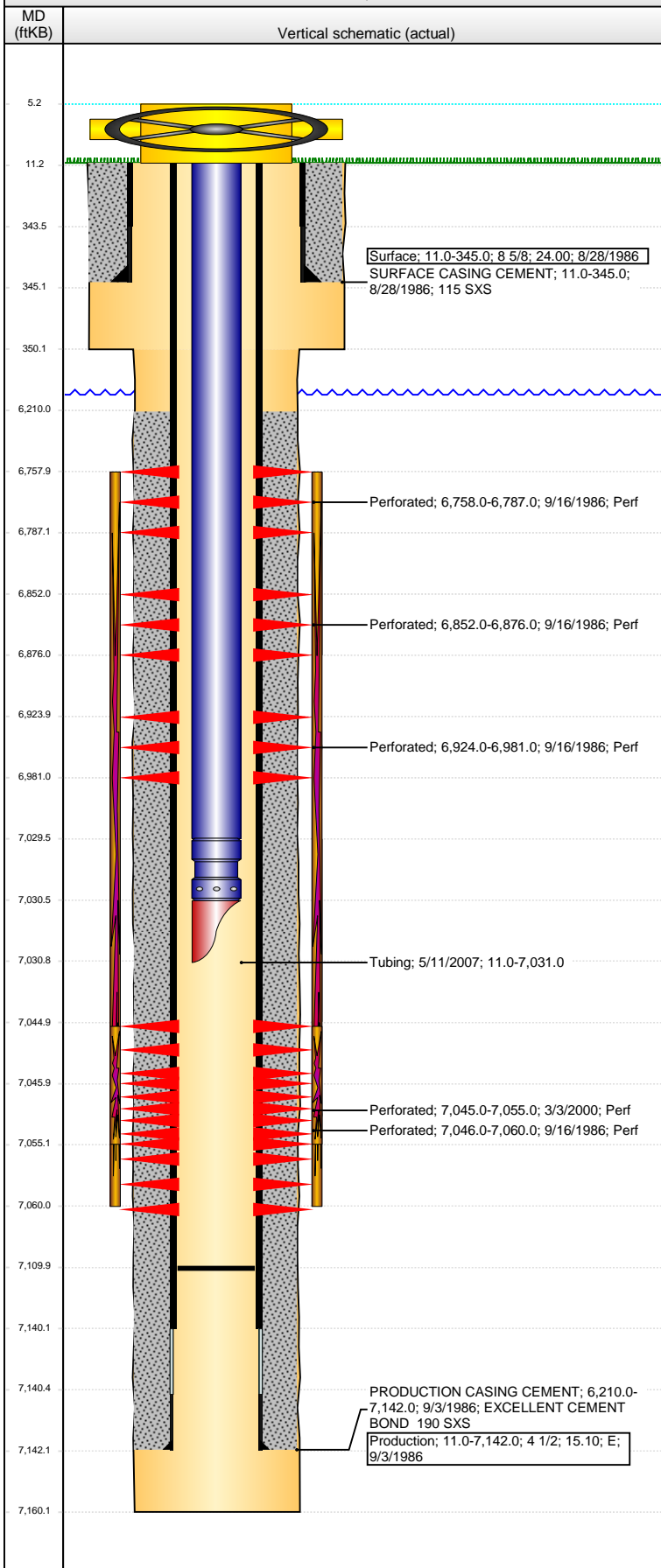


**Well Name: MUIRHEAD 01-03**

VERTICAL - ORIGINAL HOLE, 8/7/2014 4:15:08 PM



## Well Header

API	Business Unit	District	Well Config
05-123-13128	DJ BASIN	15	VERTICAL
Original KB Elevation (ft)	KB - GL / MSL (ftKB)	Spud Date	P & A Date
4,748.00	11.00	8/27/1986	
Comment			

## Directions To Well

## Congressional Location

Quarter 1	Quarter 2	Quarter 3	Quarter 4	Section	Township	Twnshp N...	Range	Rng E/W Dir
	SW	NW	SW	1	4	N	65	W

## Bottom Hole Location

North-South Distance (ft)	From N or S Line	East-West Distance (ft)	From E or W Line

## Plug Back Total Depths

Date	Depth (ftKB)	Method	Com
9/4/1986	7,111.0	TAG	TAG
9/8/1986	7,033.0	CASED HOLE LOG	DEPTH LOGGER ON CBL
5/10/2007	7,110.0	TAG	BAIL TO LAND TUBING

## Wellbore Sections

Section Des	Size (in)	Act Top, MD (ftKB)	Act Btm, MD (ftKB)
SURFACE	12 1/4	11.0	350.0
PRODUCTION	7 7/8	350.0	7,160.0

## Zone Statuses

Zone Name	Status Date	Status	Job
CODELL	10/13/1986	PR	DRILLING/COMPLETION - ORIGINAL, 8/27/1986 00:00
CODELL	3/10/2000	PR	RE-FRAC, 3/1/2000 00:00
NIOBRARA	10/13/1986	PR	DRILLING/COMPLETION - ORIGINAL, 8/27/1986 00:00

## Casing Strings

### Surface, 345.0ftKB

Casing Description	Run Date	OD (in)	Wt/Len (l...)	Grade	Top, MD (ft...)	MD (ftKB)
Surface	8/28/1986	8 5/8	24.00		11.0	345.0

### Production, 7,142.0ftKB

Casing Description	Run Date	OD (in)	Wt/Len (l...)	Grade	Top, MD (ft...)	MD (ftKB)
Production	9/3/1986	4 1/2	15.10	E	11.0	7,142.0

## Cement

Description	Top Depth (ftKB)	Bottom Depth (ftKB)
SURFACE CASING CEMENT	11.0	345.0
Description	Top Depth (ftKB)	Bottom Depth (ftKB)
PRODUCTION CASING CEMENT	6,210.0	7,142.0

## Tubing Components

Item Des	OD (in)	Wt (lb/ft)	Grade	Jts	Len (ft)	Btm (ftKB)	Btm (TVD) (ftKB)
Tubing	2 3/8			230	7,018.40	7,029.4	
Seal Nipple	2 3/8			1	1.10	7,030.5	
Mule Shoe	2 3/8			1	0.50	7,031.0	

## Perforation Data

Zone	Bnch/St g	Entered Shot Total	Top (ftKB)	Btm (ftKB)	Date
NIOBRARA, ORIGINAL HOLE	A	3	6,758.00	6,787.00	9/16/1986
NIOBRARA, ORIGINAL HOLE	B	5	6,852.00	6,876.00	9/16/1986
NIOBRARA, ORIGINAL HOLE	C	4	6,924.00	6,981.00	9/16/1986
CODELL, ORIGINAL HOLE		40	7,045.00	7,055.00	3/3/2000
CODELL, ORIGINAL HOLE		7	7,046.00	7,060.00	9/16/1986

## Stimulations & Treatments

Date	Zone	Primary Job Type
9/13/1986	NIOBRARA-CODELL, ORIGINAL HOLE	DRILLING/COMPLETION - ORIGINAL
Technical Result		Tech Result Note
Comment		

Date	Zone	Primary Job Type
9/18/1986	NIOBRARA-CODELL, ORIGINAL HOLE	DRILLING/COMPLETION - ORIGINAL
Technical Result		Tech Result Note
Failure		Screen-Out
Comment		
LIMITED ENTRY FRAC -- SCREENED OUT		

**Well Name: MUIRHEAD 01-03**

VERTICAL - ORIGINAL HOLE, 8/7/2014 4:15:10 PM

## Stimulations & Treatments

Date 3/7/2000	Zone CODELL, ORIGINAL HOLE	Primary Job Type RE-FRAC
Technical Result	Tech Result Details	Tech Result Note
Comment		

## Other In Hole

Run Date	Des	OD (in)	Top (ftKB)	Btm (ftKB)

## Logs

Date	Type	Top, MD (ftKB)	Btm, MD (ftKB)
9/3/1986	COMPENSATED DENSITY	1,560.0	7,182.0
9/3/1986	INDUCTION	300.0	7,173.0
9/8/1986	CEMENT BOND	6,550.0	7,030.0

