

**TEKTON WINDSOR LLC
640 PLAZA DRIVE STE 290
HIGHLANDS RANCH, Colorado**

Diamond Valley East 7

FRONTIER 8

Post Job Summary **Cement Surface Casing**

Date Prepared: 1/30/2014
Version: 1

Service Supervisor: DEAN, MARK

Submitted by: LANSDALE, JUSTIN

HALLIBURTON

HALLIBURTON

Wellbore Geometry

Job Tubulars					MD		Shoe Joint Length ft
Type	Description	Size in	ID in	Wt lbm/ft	Top ft	Bottom ft	
Casing	15" CONDUCTOR	16.00	15.010	84.00	0.00	80.00	
Open Hole Section	12-1/4" Open Hole		12.250		80.00	570.00	
Casing	Surface Casing	9.63	8.921	36.00	0.00	570.00	20.00

HALLIBURTON

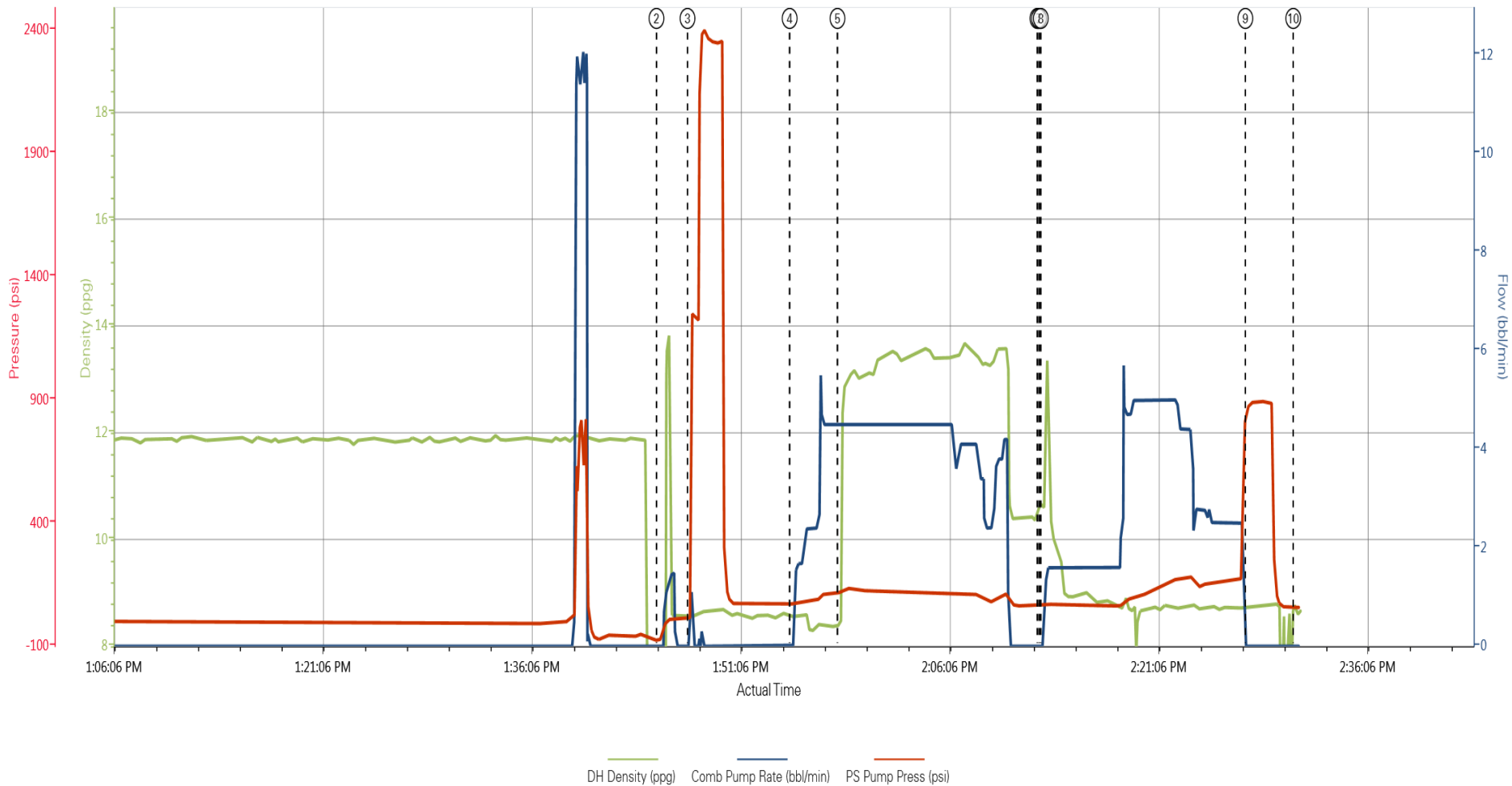
Pumping Schedule

Stage /Plug #	Fluid #	Fluid Type	Fluid Name	Surface Density lbm/gal	Avg Rate bbl/min	Surface Volume
1	1	Spacer	Fresh Water Spacer	8.33	2	10 bbl
1	2	Cement Slurry	SwiftCem B2	13.40	3	145 sks
1	3	Spacer	Displacement	8.33	3.5	40 bbl

HALLIBURTON

Data Acquisition

Job Graph



① Pause n/a,n/a,n/a ④ Pump Spacer 1 8.57,0,72 ⑦ Drop Top Plug 10.65,0,65 ⑩ End Job 8.57,0,59
 ② Start Job 2.94,0,-76 ⑤ Pump Cement 8.38,4.5,118 ⑧ Pump Displacement 10.59,0,65
 ③ Test Lines 8.56,0,17 ⑥ Shutdown 10.7,0,65 ⑨ Bump Plug 8.75,0,871

HALLIBURTON

Service Supervisor Reports

Job Log

Date/Time	Chart #	Activity Code	Pump Rate	Cum Vol	Pump		Pressure (psig)	Comments
01/05/2014 10:30		Call Out						Crew Called Out @ 10:30
01/05/2014 13:15		Pre-Convoy Safety Meeting						Discussed Planned Route, Equipment Checks & Safe Driving
01/05/2014 13:30		Depart from Service Center or Other Site						Departed Yard in Convoy
01/05/2014 14:45		Arrive at Location from Service Center						Pulled Equipment Off the Road to Inspect Site.
01/05/2014 14:45		Assessment Of Location Safety Meeting						Discussed Layout & Spotting Equipment
01/05/2014 14:50		Pre-Rig Up Safety Meeting						Discussed PPE, Red Zones, Working in the Snow & Other Hazards
01/05/2014 15:00		Rig-Up Equipment						Rigged up Safely to Customer & HES Standards
01/05/2014 16:00		Wait on Customer or Customer Sub-Contractor Equip						Waiting on casing crew and water truck.
01/05/2014 20:15		Wait on Customer or Customer Sub-Contractor Equipm						Casing crew finished and water truck arrived
01/05/2014 20:20		Pre-Job Safety Meeting						Discussed Job Procedure & Safety Concerns with Customer & Crew
01/05/2014 20:40		Test Lines						Tested Lines to 1000 psi (Pressure Held) Reset KO's to 200psi
01/05/2014 20:44		Pump Water	2	10			95.0	Pumped 10 BBL Water Ahead
01/05/2014 20:48		Pump Lead Cement	3	46			180.0	Pumped 46 BBL CMT @ D: 13.4# Y: 1.78 W: 9.49 (145 sks)
01/05/2014 21:07		Shutdown						Shutdown to Drop Plug
01/05/2014 21:08		Drop Plug						Tattle Tell Opened. Plug Left Head
01/05/2014 21:09		Clean Lines						Cleaned Lines on top of plug with first 10 BBL Displacement
01/05/2014 21:09		Pump Displacement	3.5	40			100.0	Pumped 40 BBL of fresh water Displacement
01/05/2014 21:19		Cement Returns to Surface	3.5	30			110.0	10 BBL Total Cement Returned to Surface
01/05/2014 21:23		Bump Plug	3	40			130.0	Bumped Plug @ 130psi. 500 psi over to 700psi
01/05/2014 21:25		Check Floats						1 BBL back to Truck
01/05/2014 21:30		Pre-Rig Down Safety Meeting						Discussed Trapped Pressure, Overhead Loads, & Other Hazards.
01/05/2014 21:35		Rig-Down Equipment						Rigged Down Safely to Customer & HES Standards.
01/05/2014 22:45		Pre-Convoy Safety Meeting						Discussed Safe Driving.
01/05/2014 23:00		Depart Location for Service Center or Other Site						Thankyou for Chosing Halliburton!

The Road to Excellence Starts with Safety

Sold To #: 369105	Ship To #: 3277052	Quote #:	Sales Order #: 901019755
Customer: TEKTON WINDSOR LLC		Customer Rep: MOSNESI, ARVID	
Well Name: Diamond Valley East		Well #: 7	API/UWI #: 05-13-38567
Field: WATTENBERG	City (SAP): SEVERANCE	County/Parish: Weld	State: Colorado
Lat: N 41.468 deg. OR N 41 deg. 28 min. 3.576 secs.		Long: W 104.87 deg. OR W -105 deg. 7 min. 48.684 secs.	
Job Purpose: Cement Surface Casing			
Well Type: Development Well		Job Type: Cement Surface Casing	
Sales Person: GREGORY, JON		Srvc Supervisor: DEAN, MARK	MBU ID Emp #: 454214

Job Personnel

HES Emp Name	Exp Hrs	Emp #	HES Emp Name	Exp Hrs	Emp #	HES Emp Name	Exp Hrs	Emp #
ALVAREZ, BRANDON Paul	0.0	555850	DEAN, MARK Christophe	0.0	454214	WILEY, JAMES A	0.0	440080

Equipment

HES Unit #	Distance-1 way	HES Unit #	Distance-1 way	HES Unit #	Distance-1 way	HES Unit #	Distance-1 way

Job

Job Times

Formation Name								
Formation Depth (MD)	Top	Bottom			Called Out	Date	Time	Time Zone
Form Type		BHST			On Location	05 - Jan - 2014	14:30	MST
Job depth MD	570. ft	Job Depth TVD	570. ft		Job Started	05 - Jan - 2014	20:30	MST
Water Depth		Wk Ht Above Floor			Job Completed	05 - Jan - 2014	21:25	MST
Perforation Depth (MD)	From	To			Departed Loc	05 - Jan - 2014	23:00	MST

Well Data

Description	New / Used	Max pressure psig	Size in	ID in	Weight lbm/ft	Thread	Grade	Top MD ft	Bottom MD ft	Top TVD ft	Bottom TVD ft
12-1/4" Open Hole				12.25				80.	570.		
15" CONDUCTOR	Unknown		16.	15.01	84.			.	80.		
Surface Casing	Unknown		9.625	8.921	36.			.	570.		

Sales/Rental/3rd Party (HES)

Description	Qty	Qty uom	Depth	Supplier
CENTRALIZER-9-5/8"-CSG-12 1/4"-HINGED	5	EA		
CLR,FLT,9-5/8 8RD 29.3-40PPF,2-3/4	1	EA		
SHOE,GID,9-5/8 8RD	1	EA		
KIT,HALL WELD-A	1	EA		
COLLAR-STOP-9 5/8"-FRICTION-HINGED	1	EA		
PLUG,CMTG,TOP,9 5/8,HWE,8.16 MIN/9.06 MA	1	EA		
Description	Qty	Qty uom	Depth	Supplier
MILEAGE FOR CEMENTING CREW,ZI	60	MI		
BASKET - CEMENT - 9-5/8 CSG X 12-1/4	2	EA		
COLLAR-STOP-9 5/8"-FRICTION-HINGED	4	EA		

Fluid Data

Stage/Plug #: 1

Summit

Wednesday, July 09, 2014 10:25:00

Version:

Fluid #	Stage Type	Fluid Name	Qty	Qty uom	Mixing Density lbm/gal	Yield ft ³ /sk	Mix Fluid Gal/sk	Rate bbl/min	Total Mix Fluid Gal/sk
1	Fresh Water Spacer		10	bbl	8.33			2	
2	SwiftCem B2	SWIFTCM (TM) SYSTEM (452990)	145	sacks	13.4	1.79	9.52	3	9.52
	9.52 Gal	FRESH WATER							
3	Displacement		40	bbl				3.5	
	94 lbm	CMT - PREMIUM - CLASS G REG OR TYPE V, BULK (100003685)							
	5 Gal	FRESH WATER							
Rates									
Circulating		Mixing		Displacement		Avg. Job			
Cement Left In Pipe		Amount	20 ft	Reason	Shoe Joint				
Frac Ring # 1 @		ID		Frac ring # 2 @		ID		Frac Ring # 4 @	
The Information Stated Herein Is Correct			Customer Representative Signature						

