

**TEKTON WINDSOR LLC
200 PLAZA DR STE 100
HIGHLANDS RANCH, Colorado**

Diamond Valley East 4

FRONTIER 8

Post Job Summary **Cement Surface Casing**

Date Prepared: 7/9/2014
Version: 1

Service Supervisor: BARRAS, JOSEPH

Submitted by: LANSDALE, JUSTIN

HALLIBURTON

HALLIBURTON

Wellbore Geometry

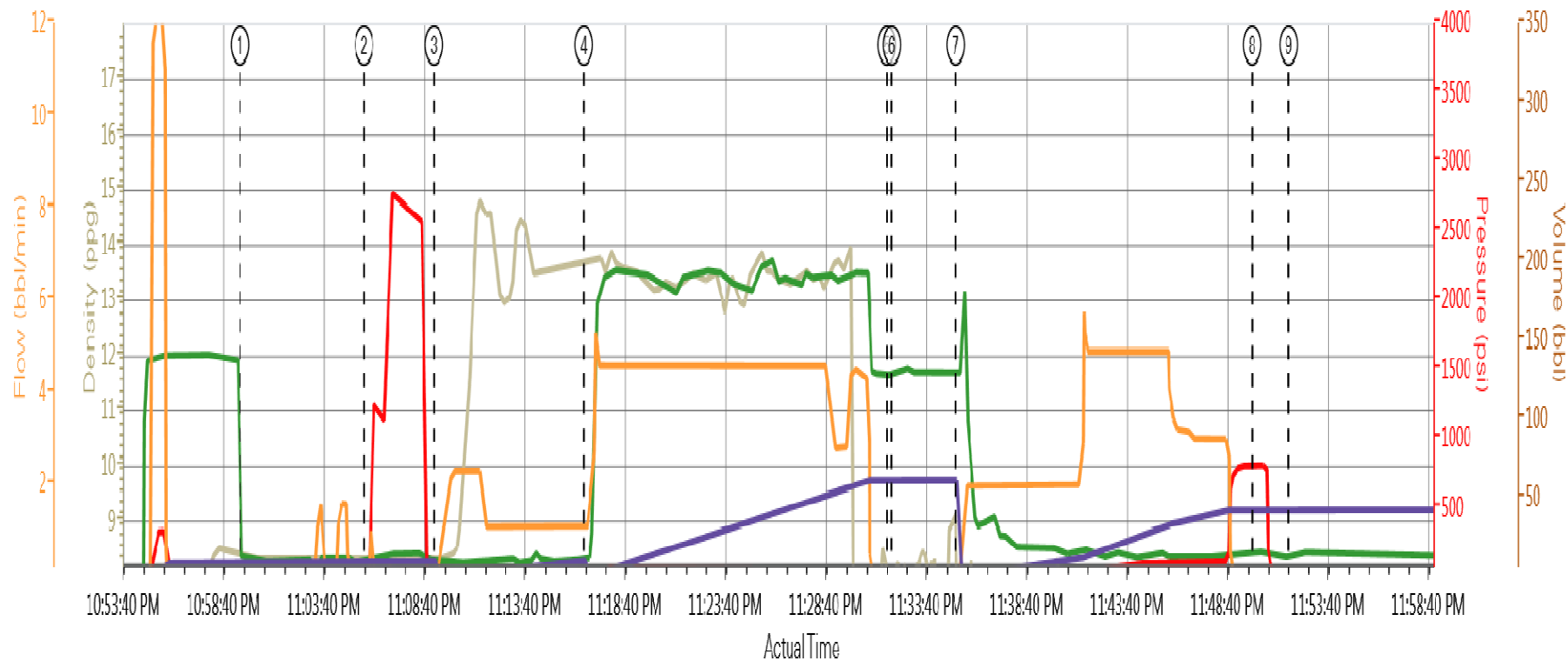
Job Tubulars					MD		Shoe Joint Length ft
Type	Description	Size in	ID in	Wt lbm/ft	Top ft	Bottom ft	
Casing	15" CONDUCTOR	16.00	15.010	84.00	0.00	80.00	
Open Hole Section	12-1/4" Open Hole		12.250		80.00	570.00	
Casing	Surface Casing	9.63	8.921	36.00	0.00	570.00	20.00

HALLIBURTON

Pumping Schedule

Stage /Plug #	Fluid #	Fluid Type	Fluid Name	Surface Density lbm/gal	Avg Rate bbl/min	Surface Volume
1	1	Spacer	Fresh Water Spacer	8.33	4	10 bbl
1	2	Cement Slurry	SwiftCem B2	13.40	5	145.0 sacks
1	3	Spacer	Displacement	8.33	5	40 bbl

TEKTON DIAMOND VALLEY EAST #4 SURFACE



Recirc Density (ppg) DH Density (ppg) PS Pump Press (psi) Combo Pump Rate (bbl/min) Pump Stg Tot (bbl)

HALLIBURTON

Service Supervisor Reports

Job Log

Date/Time	Chart #	Activity Code	Pump Rate	Cum Vol	Pump		Pressure (psig)	Comments
01/03/2014 18:55		Arrive at Location from Service Center						rig running casing
01/03/2014 19:10		Rig-Up Equipment						move HES into position for job
01/03/2014 20:00		Rig-Up Completed						
01/03/2014 22:00		Safety Meeting - Pre Job						with HES and rig crew
01/03/2014 22:59		Start Job						
01/03/2014 23:05		Test Lines						test lines to 2500 psi with no visible leaks
01/03/2014 23:09		Pump Spacer 1	4	10			6.0	rig water
01/03/2014 23:16		Pump Cement	5	46			52.0	mixed with rig water @ 13.5 ppg / 145 sks of swift cem 1.79 yield / 9.52 gal/sk
01/03/2014 23:31		Shutdown						
01/03/2014 23:32		Drop Top Plug						prloaded and witnessed by companyman
01/03/2014 23:35		Pump Displacement	5	40			108.0	rig water with cement to surface @ 125 bbl into displacing
01/03/2014 23:50		Bump Plug	2				798.0	
01/03/2014 23:53		Check Floats						held with 1 bbl back
01/03/2014 23:55		End Job						
01/04/2014 00:00		Rig-Down Equipment						
01/04/2014 01:00		Return to Service Center from Job						

The Road to Excellence Starts with Safety

Sold To #: 369105	Ship To #: 3207560	Quote #:	Sales Order #: 901017068
Customer: TEKTON WINDSOR LLC		Customer Rep: MOSNESI, ARVID	
Well Name: Diamond Valley East	Well #: 4	API/UWI #: 05-123-38499	
Field: WATTENBERG	City (SAP): WINDSOR	County/Parish: Weld	State: Colorado
Lat: N 40.468 deg. OR N 40 deg. 28 min. 3.108 secs.		Long: W 104.87 deg. OR W -105 deg. 7 min. 48.684 secs.	
Job Purpose: Cement Surface Casing			
Well Type: Development Well		Job Type: Cement Surface Casing	
Sales Person: GREGORY, JON		Srvc Supervisor: BARRAS, JOSEPH	MBU ID Emp #: 405168

Job Personnel

HES Emp Name	Exp Hrs	Emp #	HES Emp Name	Exp Hrs	Emp #	HES Emp Name	Exp Hrs	Emp #
BANUELOS, GUADALUPE	0.0	372277	BARRAS, JOSEPH Corey	0.0	405168	KOSAKEWICH, LUKE Wayne	0.0	560003
MAYFIELD, BYRON L	0.0	528751						

Equipment

HES Unit #	Distance-1 way	HES Unit #	Distance-1 way	HES Unit #	Distance-1 way	HES Unit #	Distance-1 way
10248062C	36 mile	11410470C	36 mile				

Job Hours

Date	On Location Hours	Operating Hours	Date	On Location Hours	Operating Hours	Date	On Location Hours	Operating Hours
TOTAL								

Total is the sum of each column separately

Job

Job Times

Formation Name	Formation Depth (MD)	Top	Bottom	Form Type	Job depth MD	Job Depth TVD	Water Depth	Perforation Depth (MD)	From	To	Called Out	Date	Time	Time Zone
				BHST	559. ft	559. ft	5. ft					03 - Jan - 2014	16:30	MST
											On Location			
											Job Started	03 - Jan - 2014	22:59	MST
											Job Completed	03 - Jan - 2014	23:51	MST
											Departed Loc			

Well Data

Description	New / Used	Max pressure psig	Size in	ID in	Weight lbm/ft	Thread	Grade	Top MD ft	Bottom MD ft	Top TVD ft	Bottom TVD ft
12-1/4" Open Hole				12.25				80.	570.		
15" CONDUCTOR	Unknown		16.	15.01	84.			.	80.		
Surface Casing	Unknown		9.625	8.921	36.			.	570.		

Sales/Rental/3rd Party (HES)

Description	Qty	Qty uom	Depth	Supplier
CENTRALIZER-9-5/8"-CSG-12 1/4"-HINGED	5	EA		
CLR,FLT,9-5/8 8RD 29.3-40PPF,2-3/4	1	EA		
SHOE,GID,9-5/8 8RD	1	EA		
KIT,HALL WELD-A	1	EA		
Description	Qty	Qty uom	Depth	Supplier

COLLAR-STOP-9 5/8"-FRICTION-HINGED	1	EA		
PLUG,CMTG,TOP,9 5/8,HWE,8.16 MIN/9.06 MA	1	EA		
MILEAGE FOR CEMENTING CREW,ZI	60	MI		
BASKET - CEMENT - 9-5/8 CSG X 12-1/4	2	EA		
COLLAR-STOP-9 5/8"-FRICTION-HINGED	4	EA		

Fluid Data

Stage/Plug #: 1

Fluid #	Stage Type	Fluid Name	Qty	Qty uom	Mixing Density lbm/gal	Yield ft3/sk	Mix Fluid Gal/sk	Rate bbl/min	Total Mix Fluid Gal/sk
1	Fresh Water Spacer		10	bbl	8.33				
2	SwiftCem B2	SWIFTCEM (TM) SYSTEM (452990)	145.0	sacks	13.4	1.79	9.52		9.52
	9.52 Gal	FRESH WATER							
3	Displacement		40	bbl	8.33				
	94 lbm	CMT - PREMIUM - CLASS G REG OR TYPE V, BULK (100003685)							
	5 Gal	FRESH WATER							

The Information Stated Herein Is Correct

Customer Representative Signature

