



WELL : DIAMOND VALLEY EAST #4

FIELD : WATTENBERG

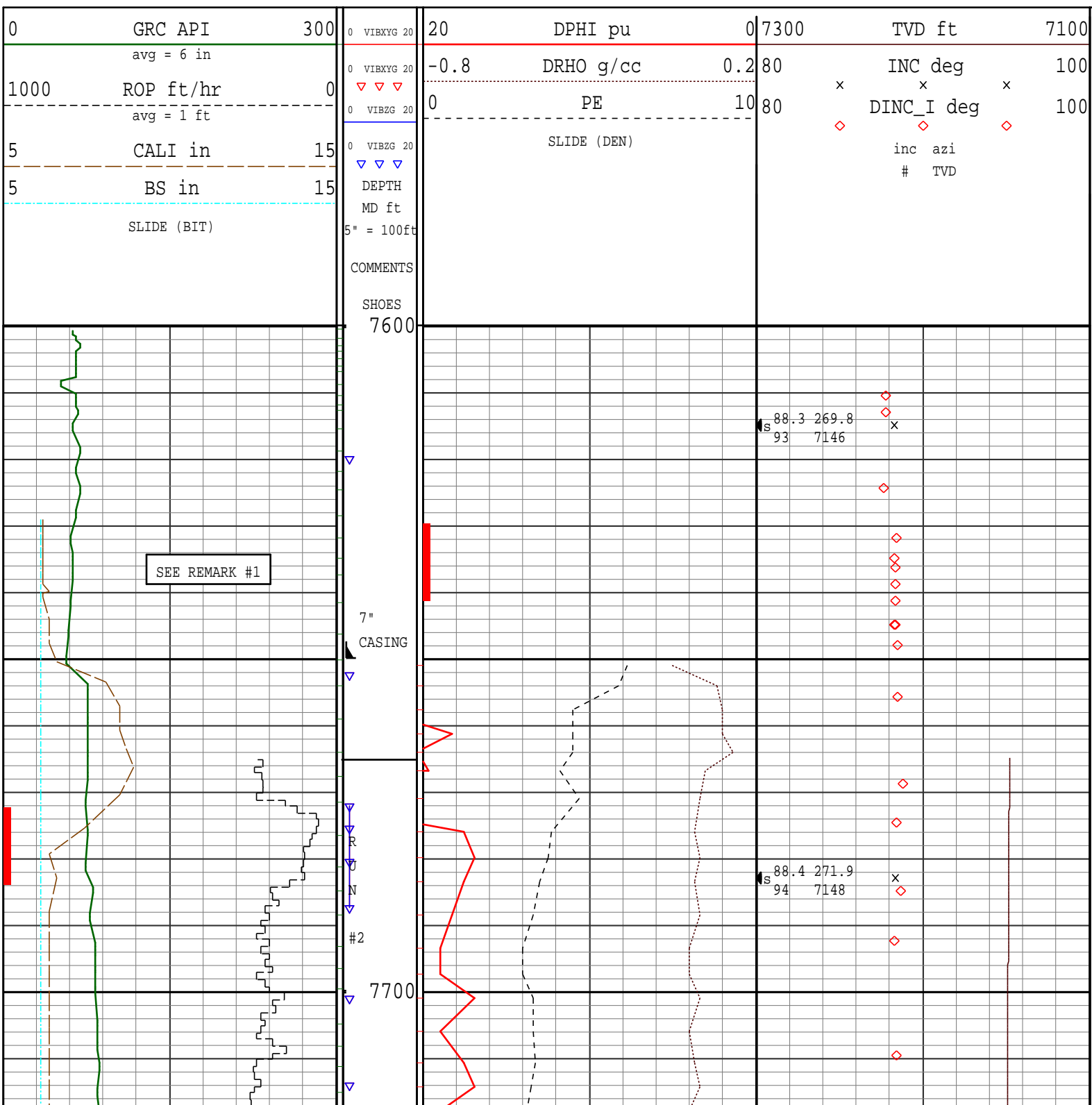
REMARKS:

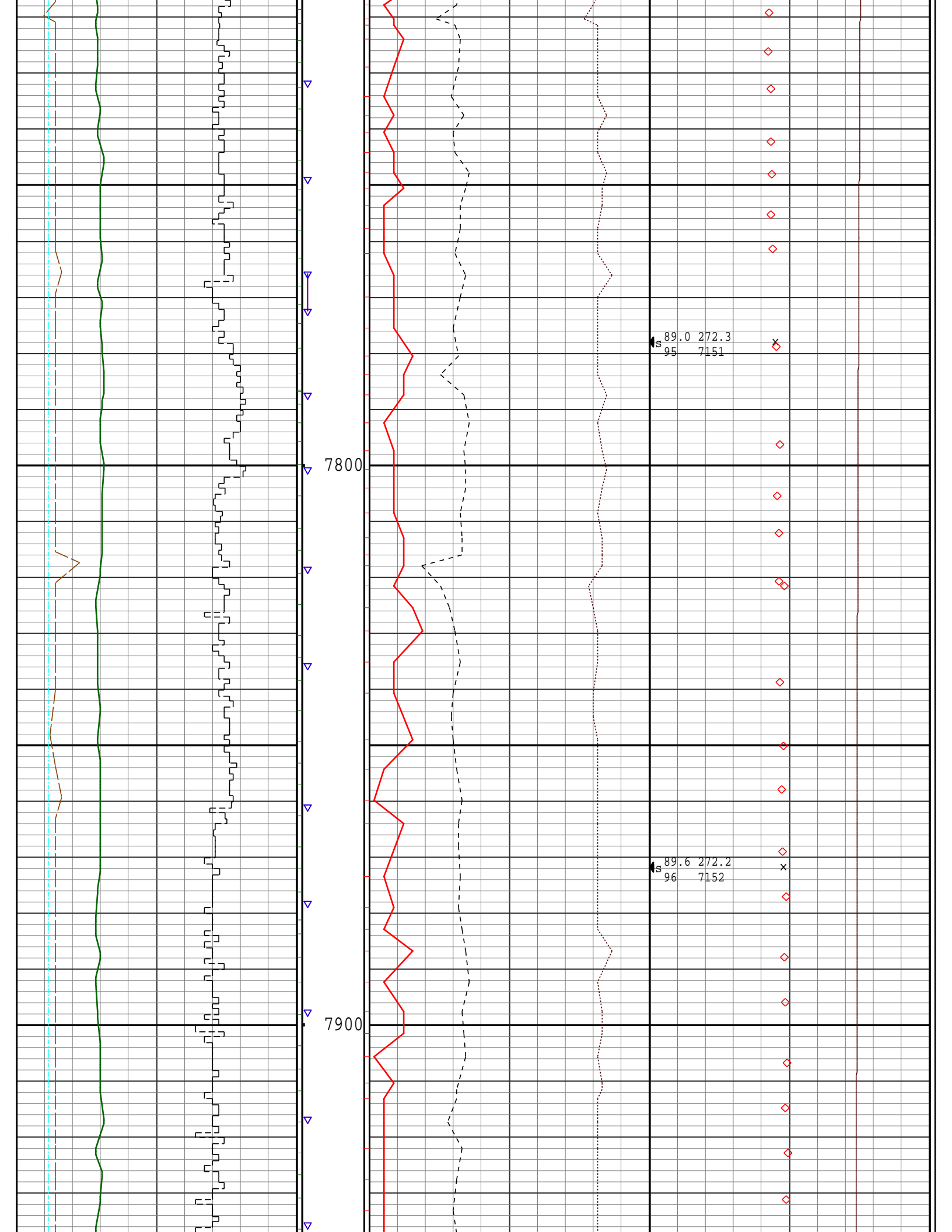
NOTICE - All interpretations are opinions based on inferences from electrical or other measurements and we do not guarantee the accuracy or correctness of any interpretations. We shall not, except in the case of gross or wilful negligence on our part, be liable or responsible for loss, costs, damages or expenses incurred or sustained by anyone as a result of any interpretations made by one of our officers, agents or employees. These interpretations are also subject to our General Terms and Conditions as set out in our current Price Schedule.

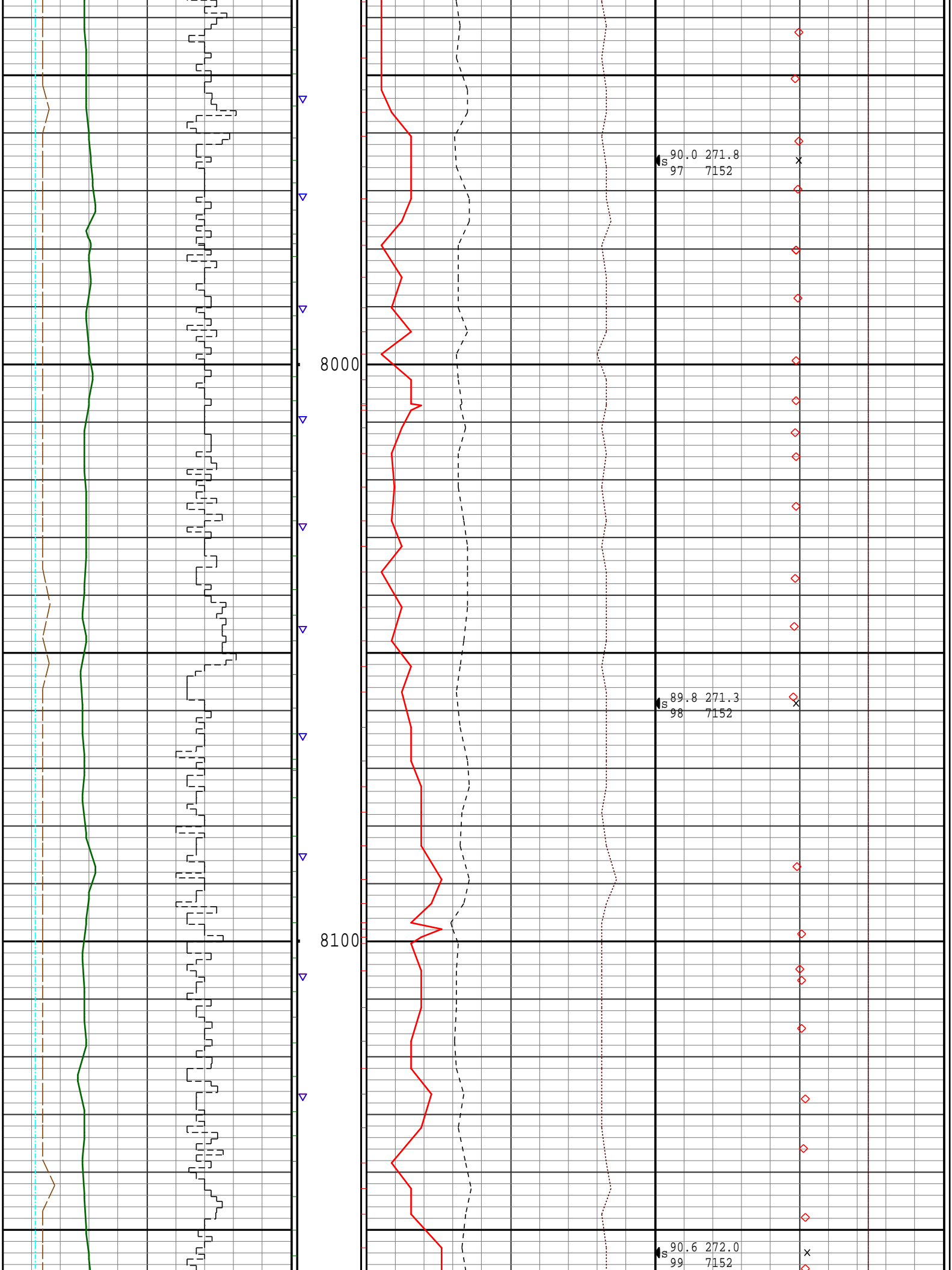
PATHFINDER - A Schlumberger Company

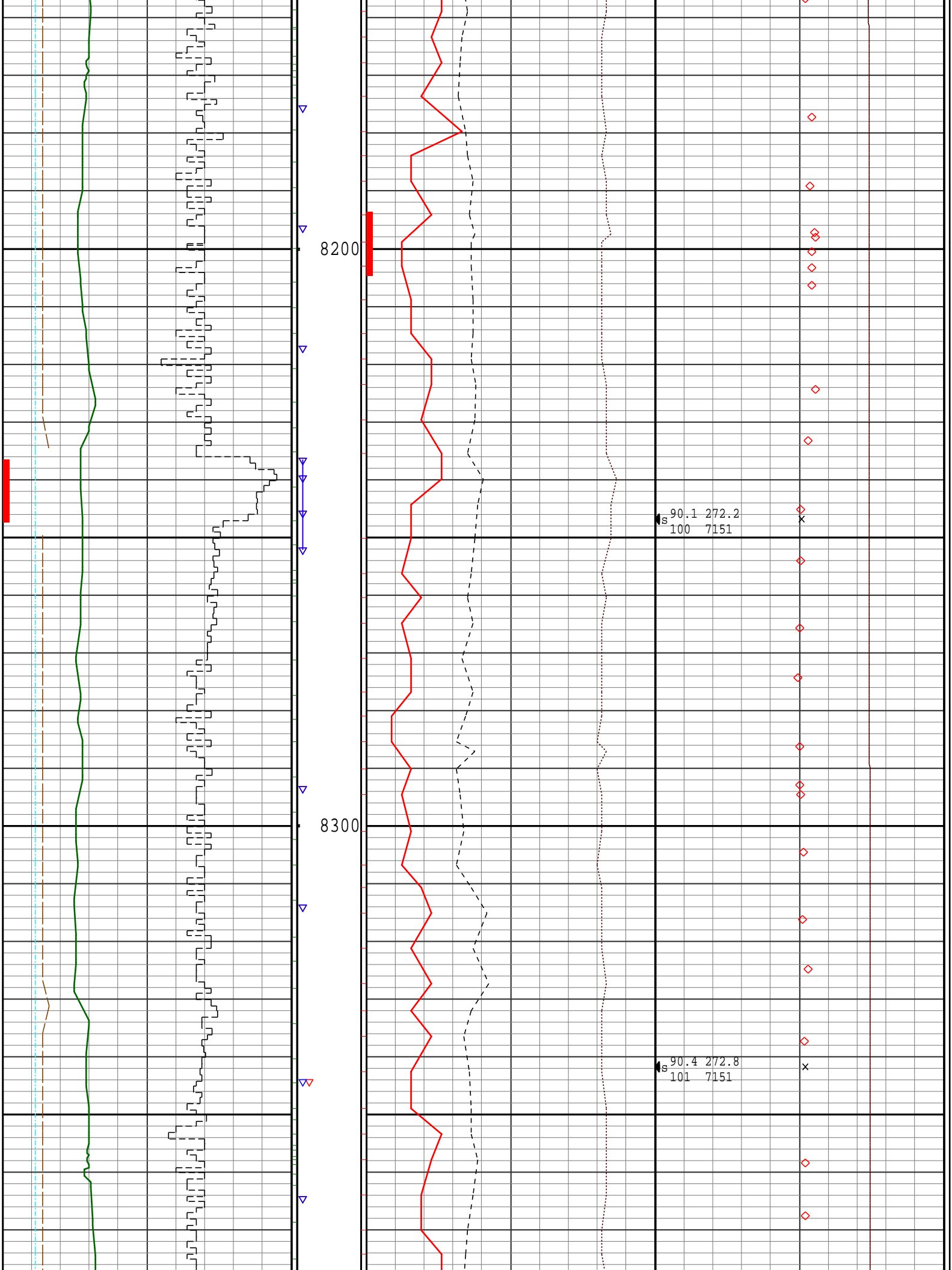
Version No : RX5 V6.05 Release 20Sep2013

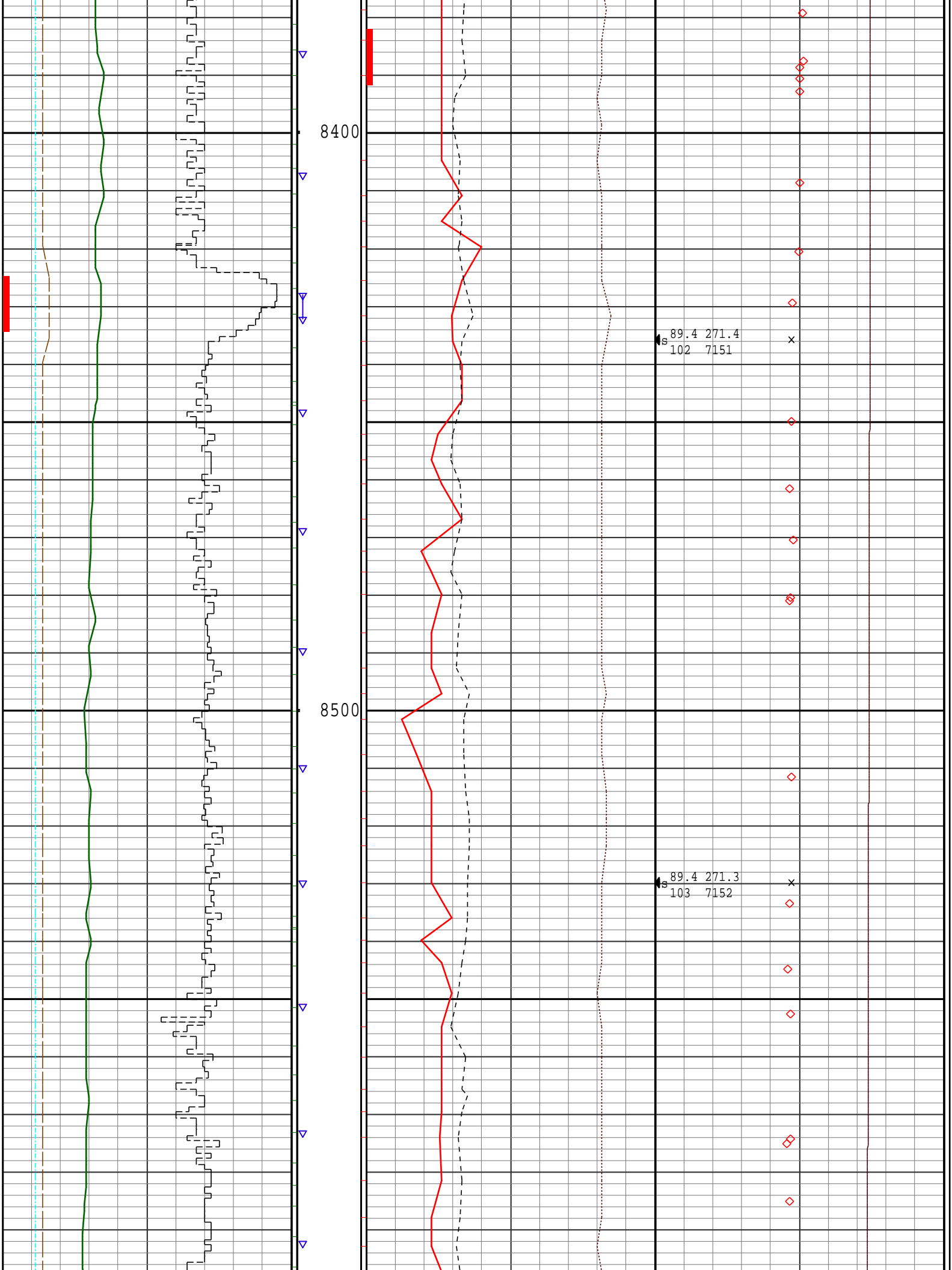
Plot Time : 15-Feb-2014 07:16

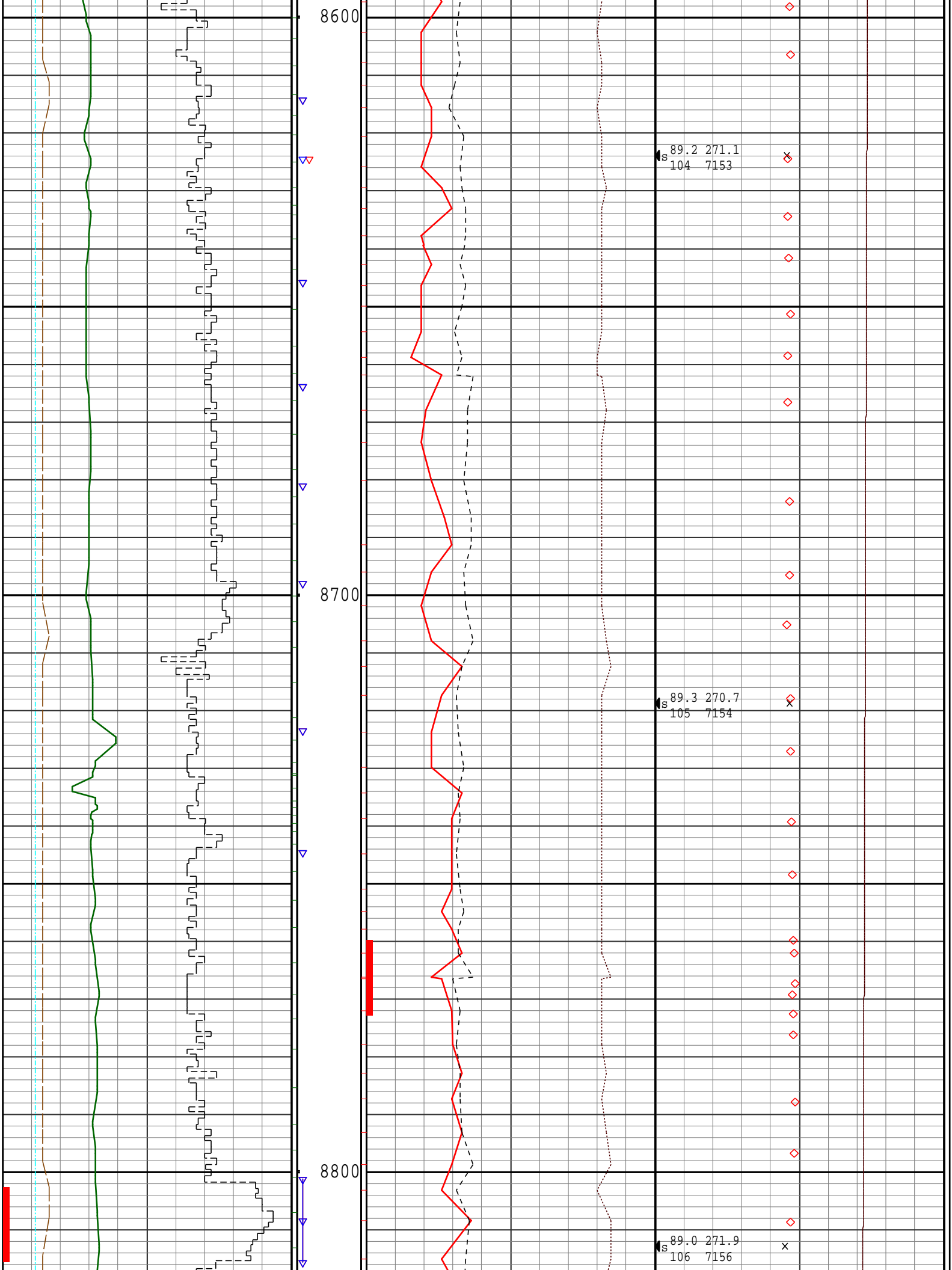


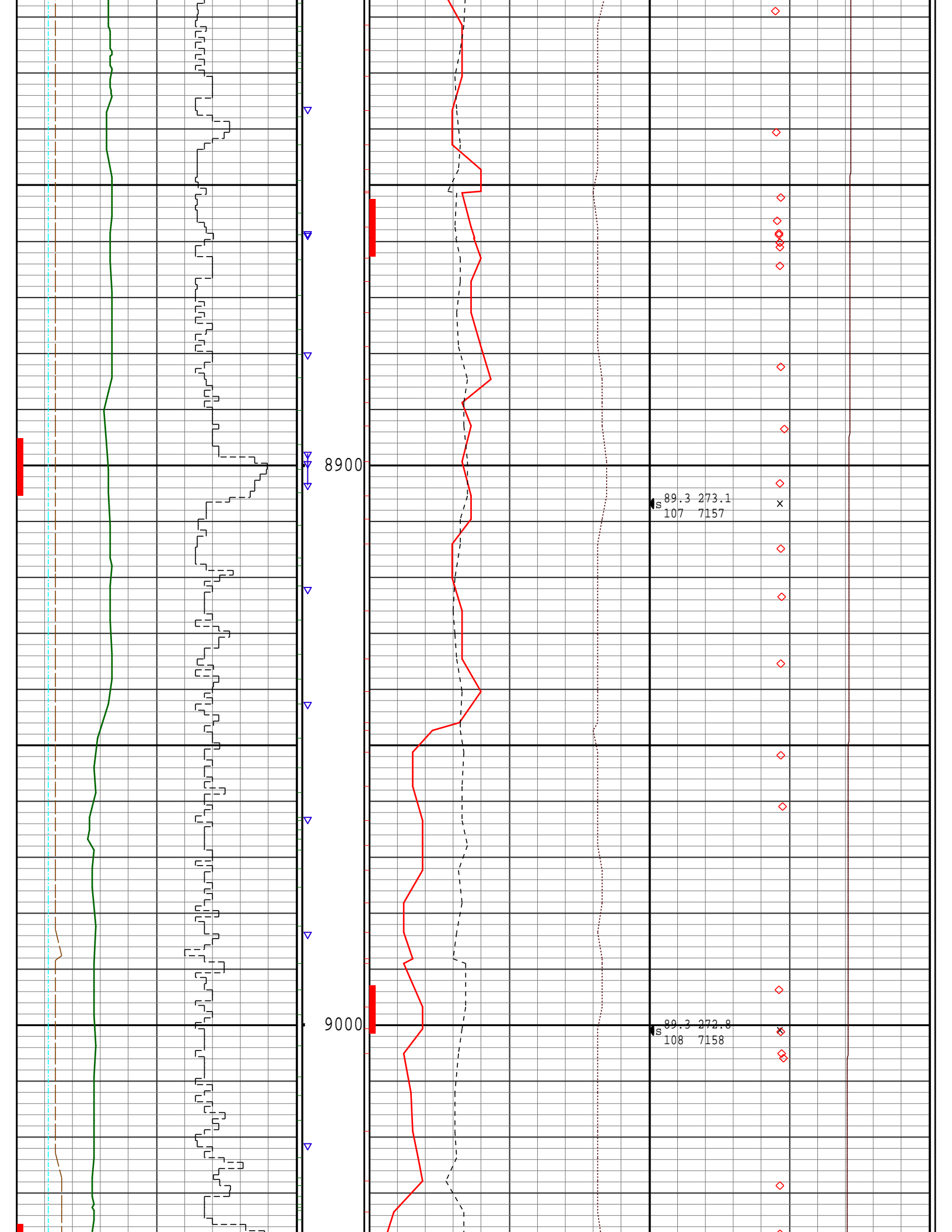


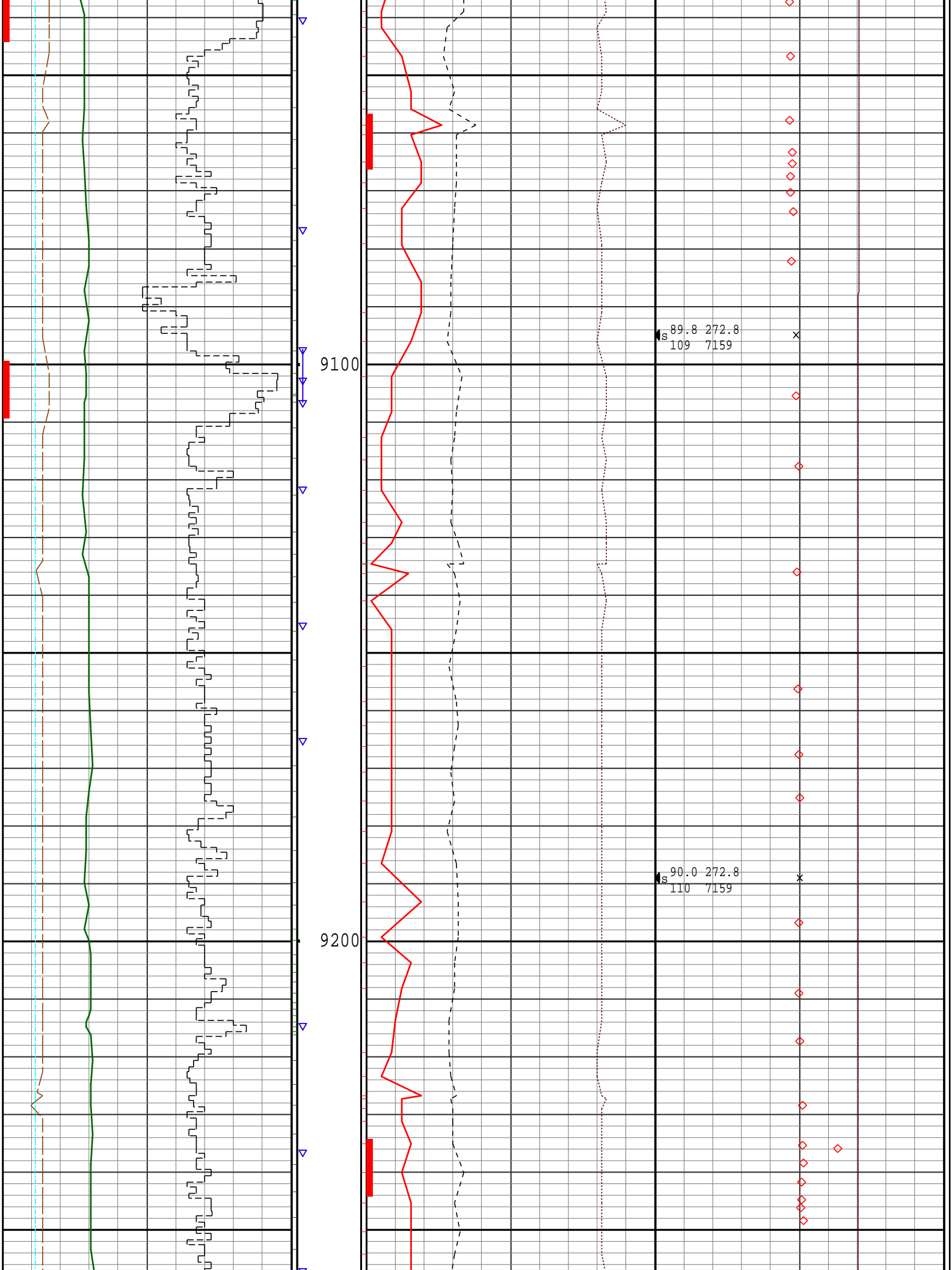


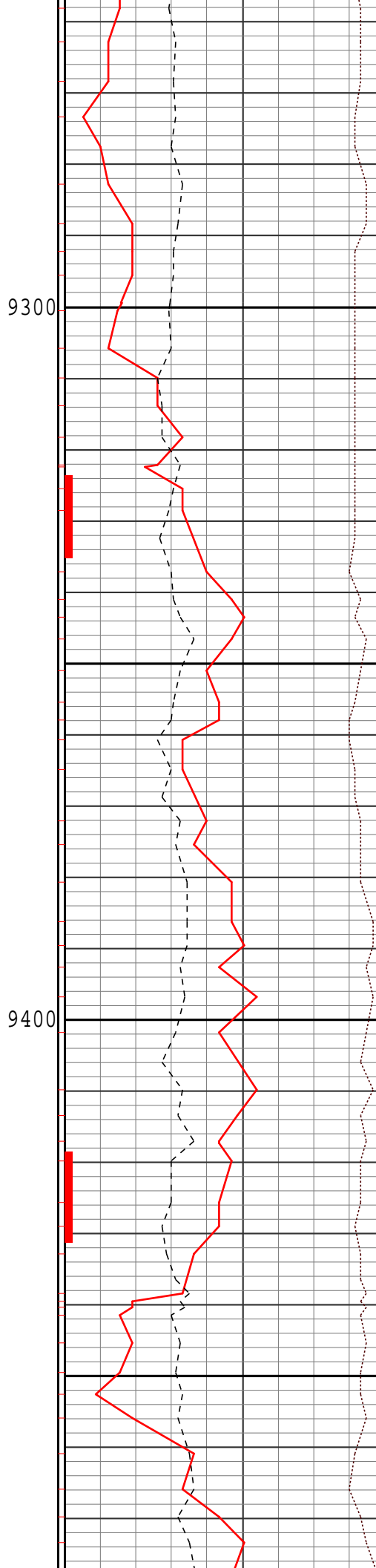
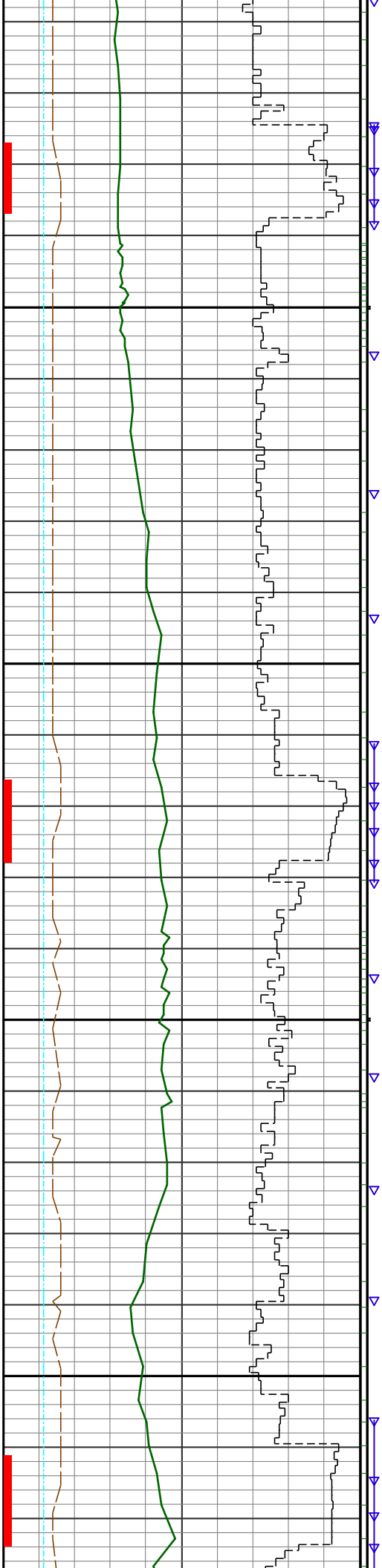










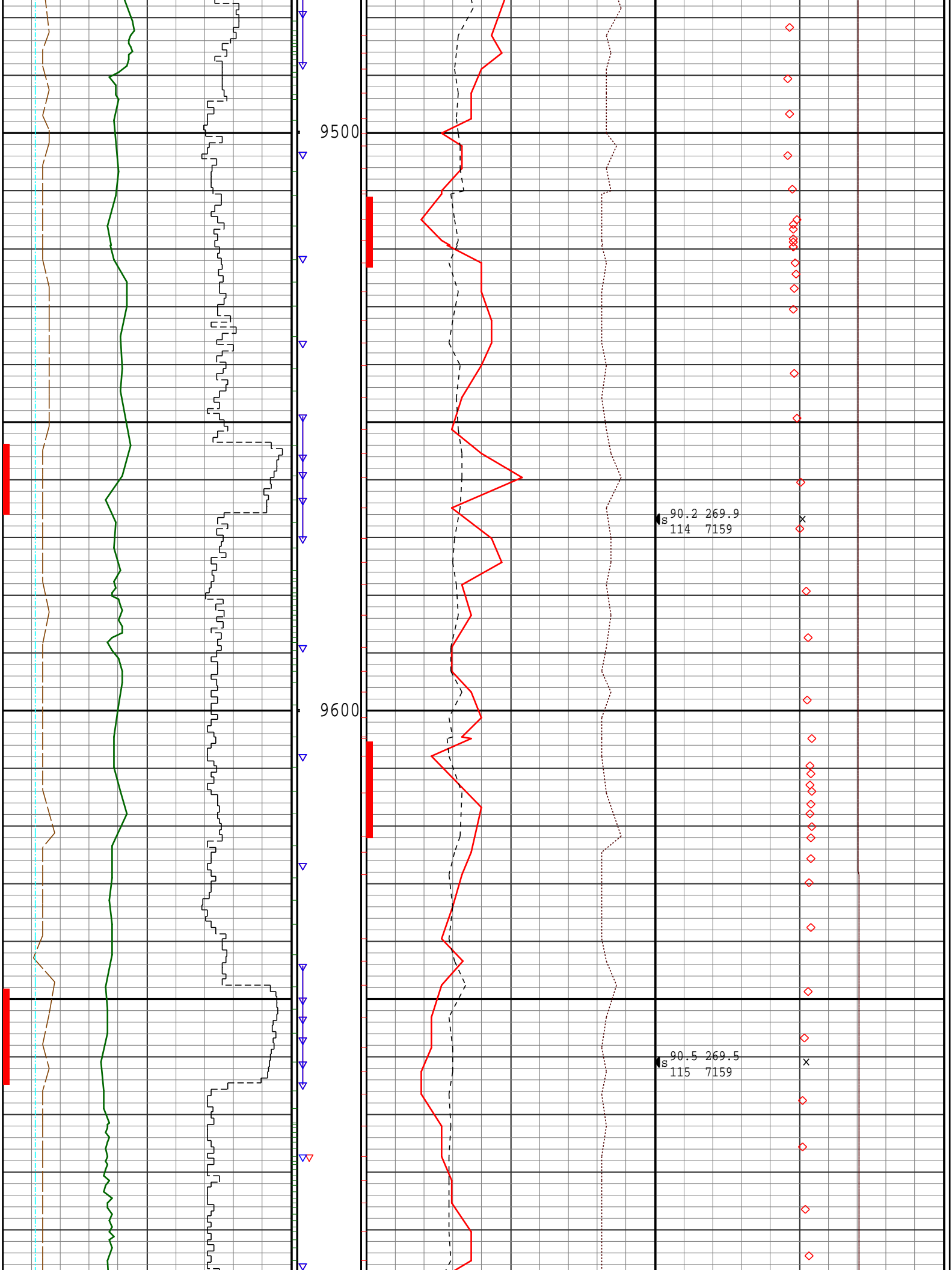


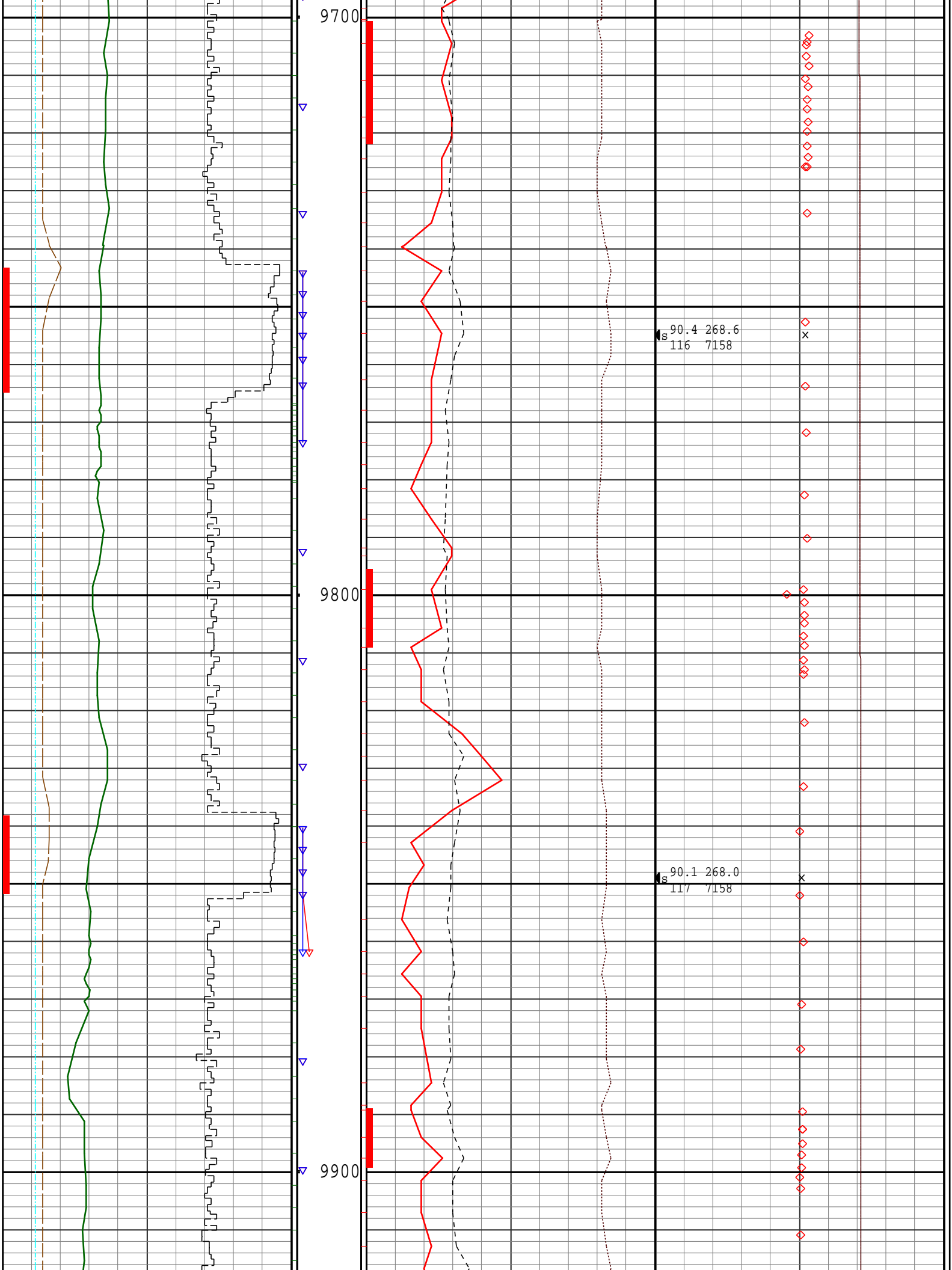
$^{90}_{111}\text{S}$ 272.2
7159

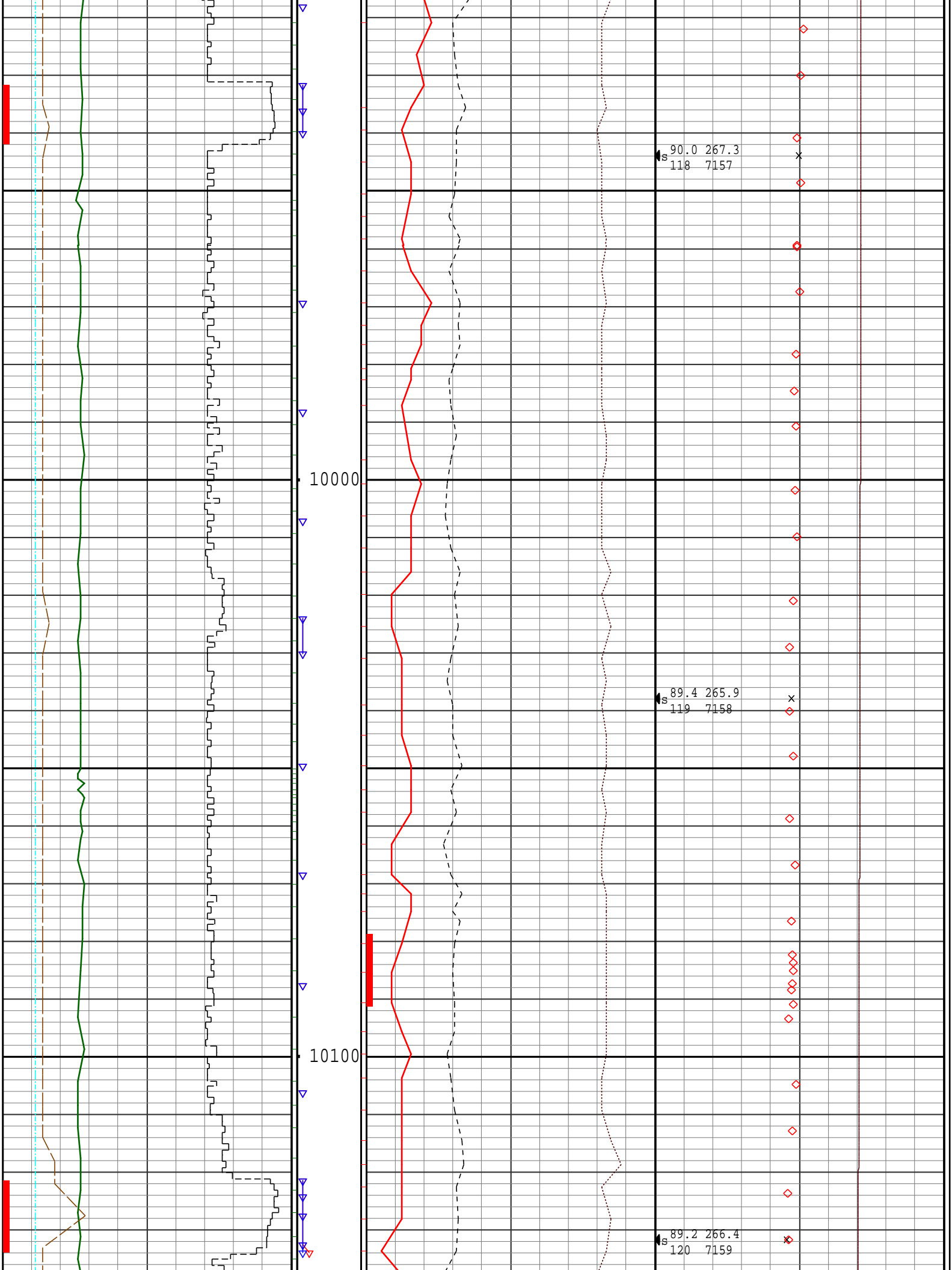
$^{90}_{112}\text{S}$ 271.5
7159

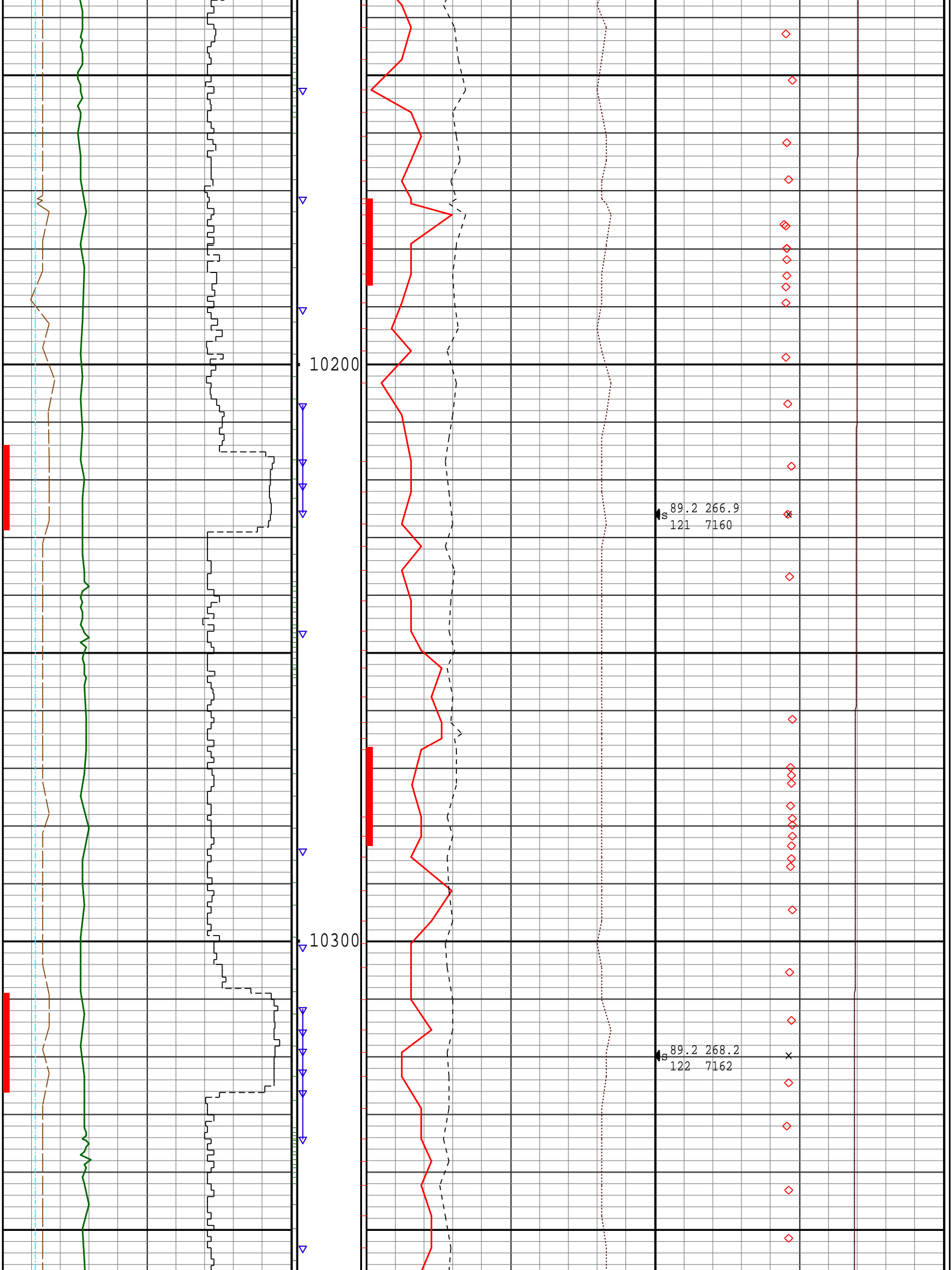
$^{89}_{113}\text{S}$ 269.9
7159

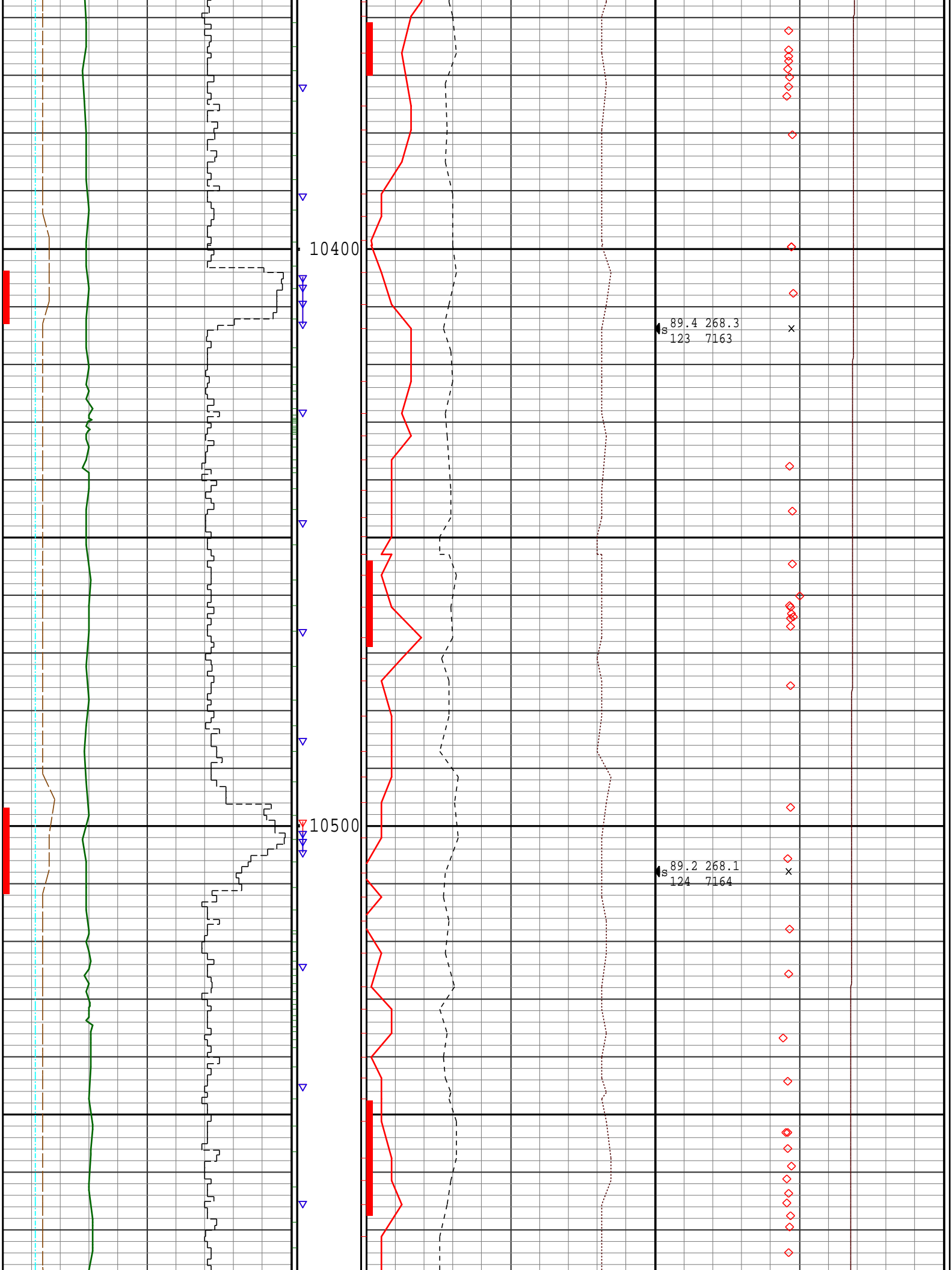


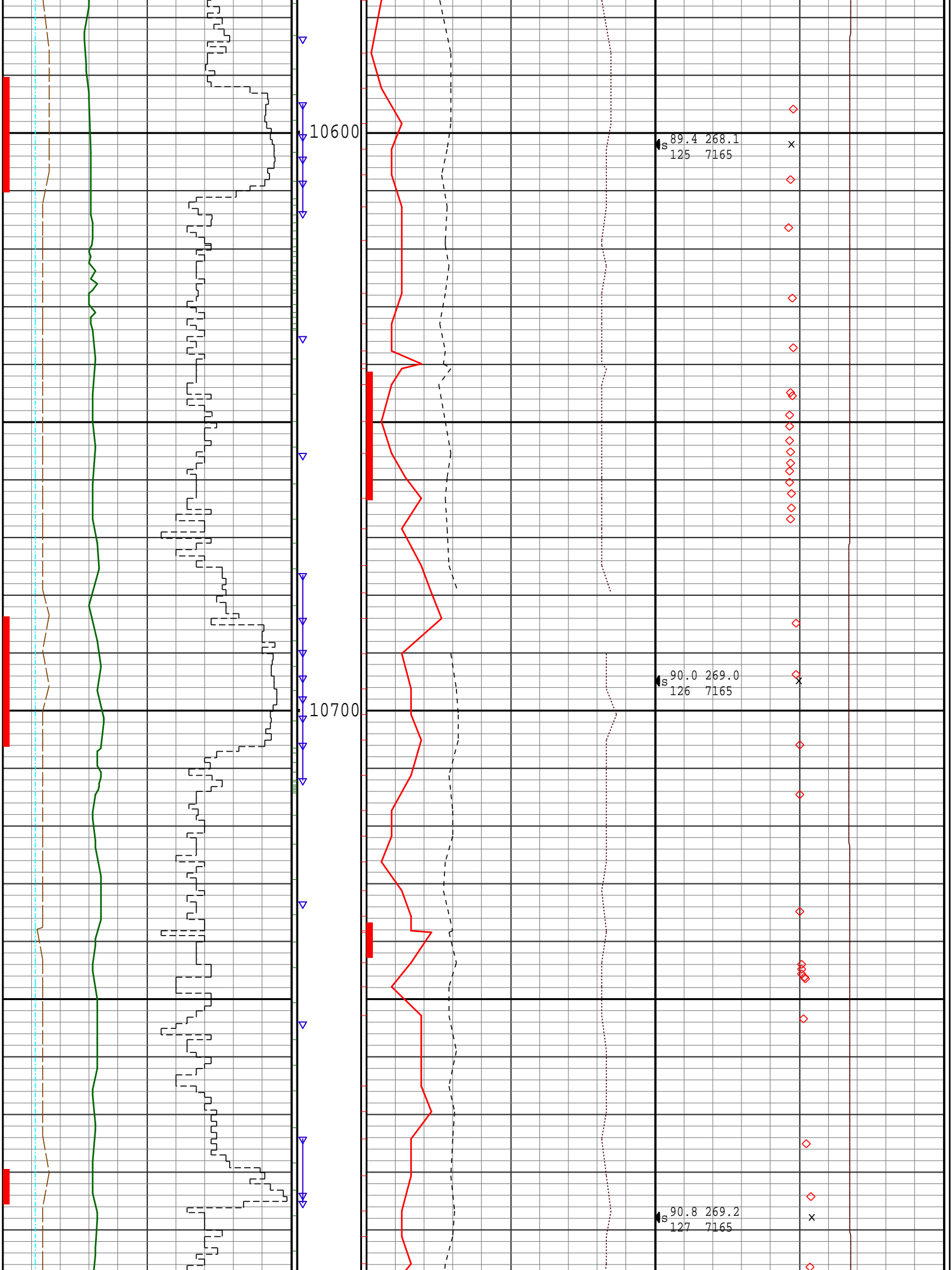


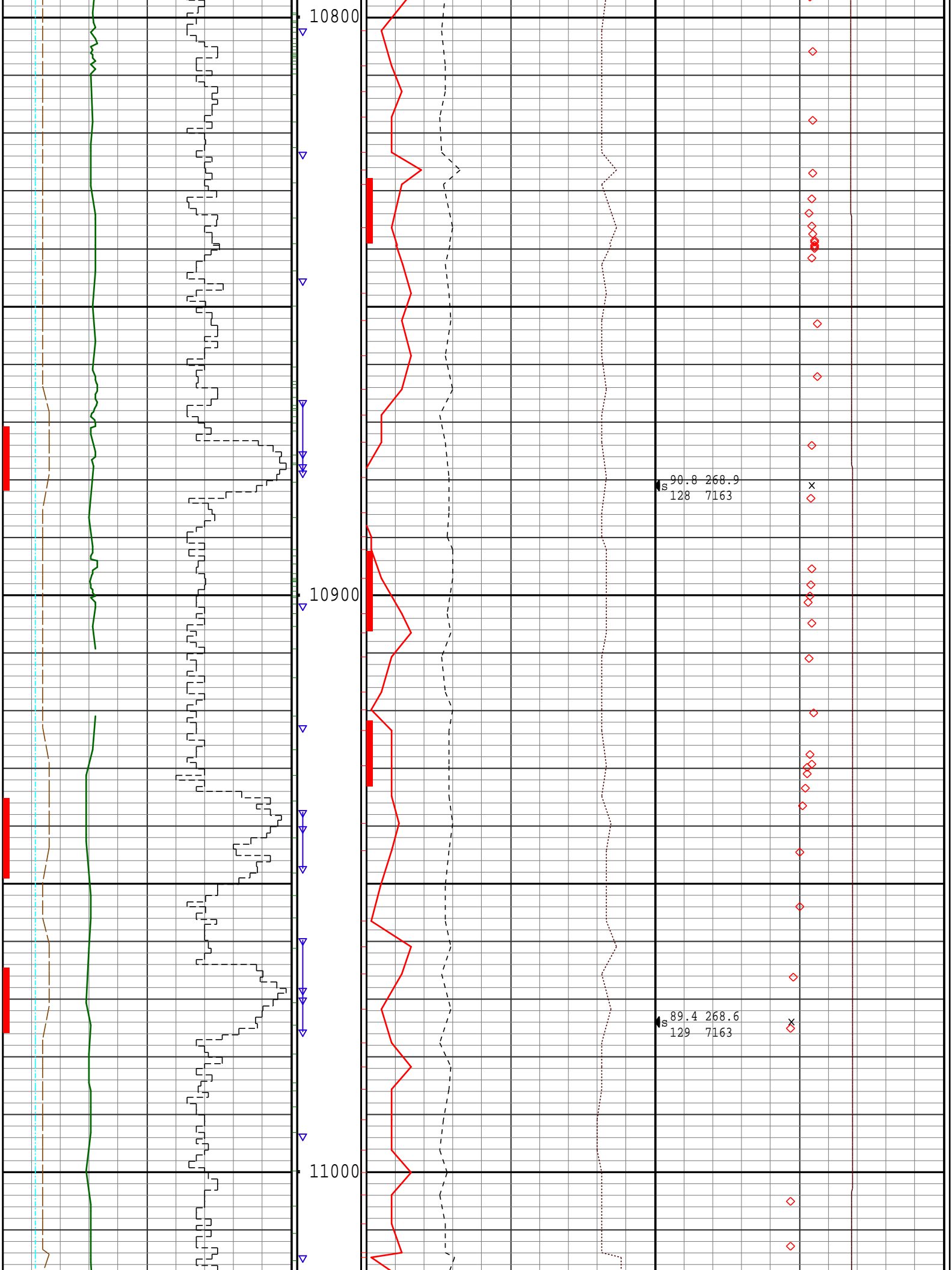


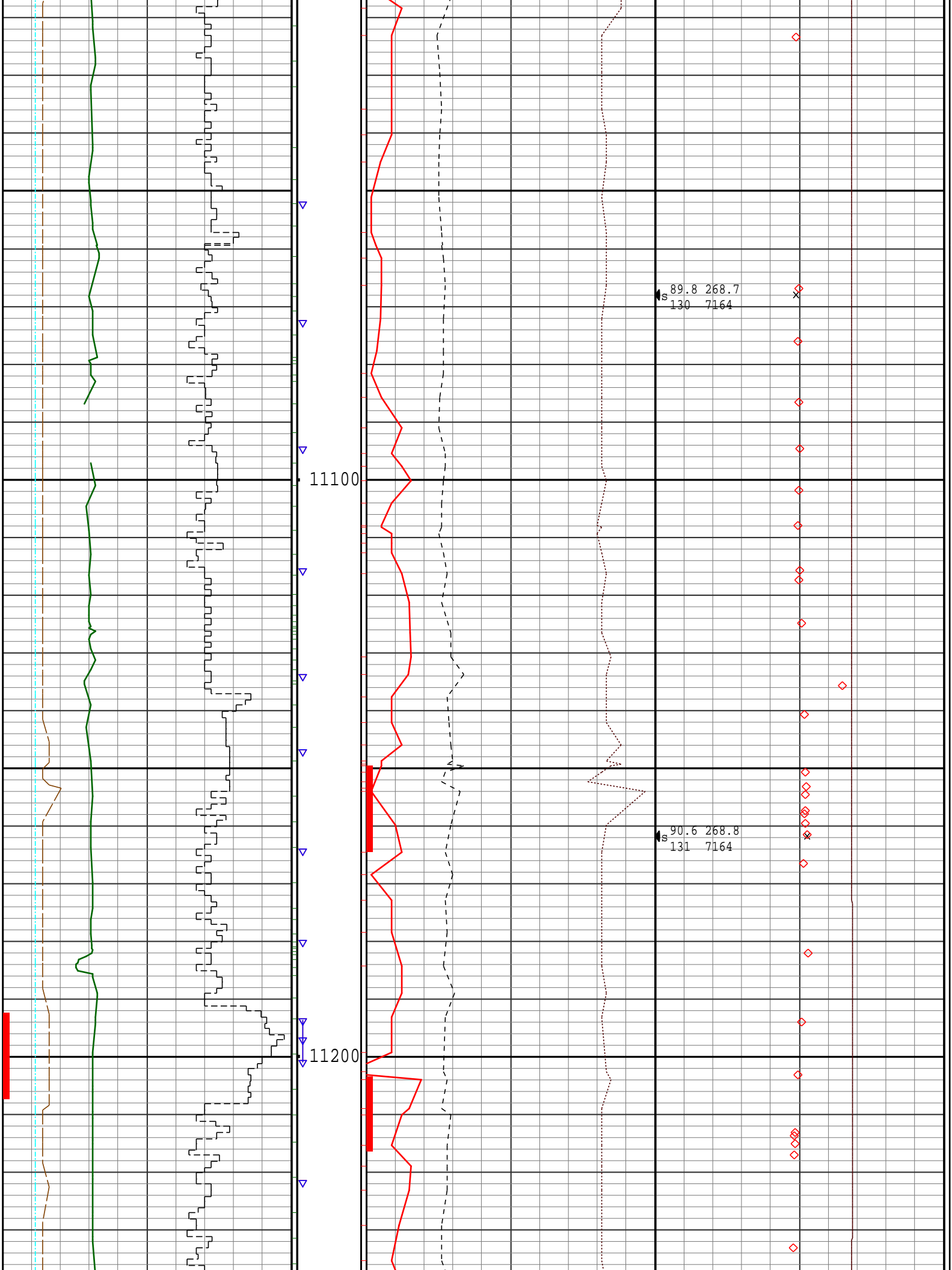


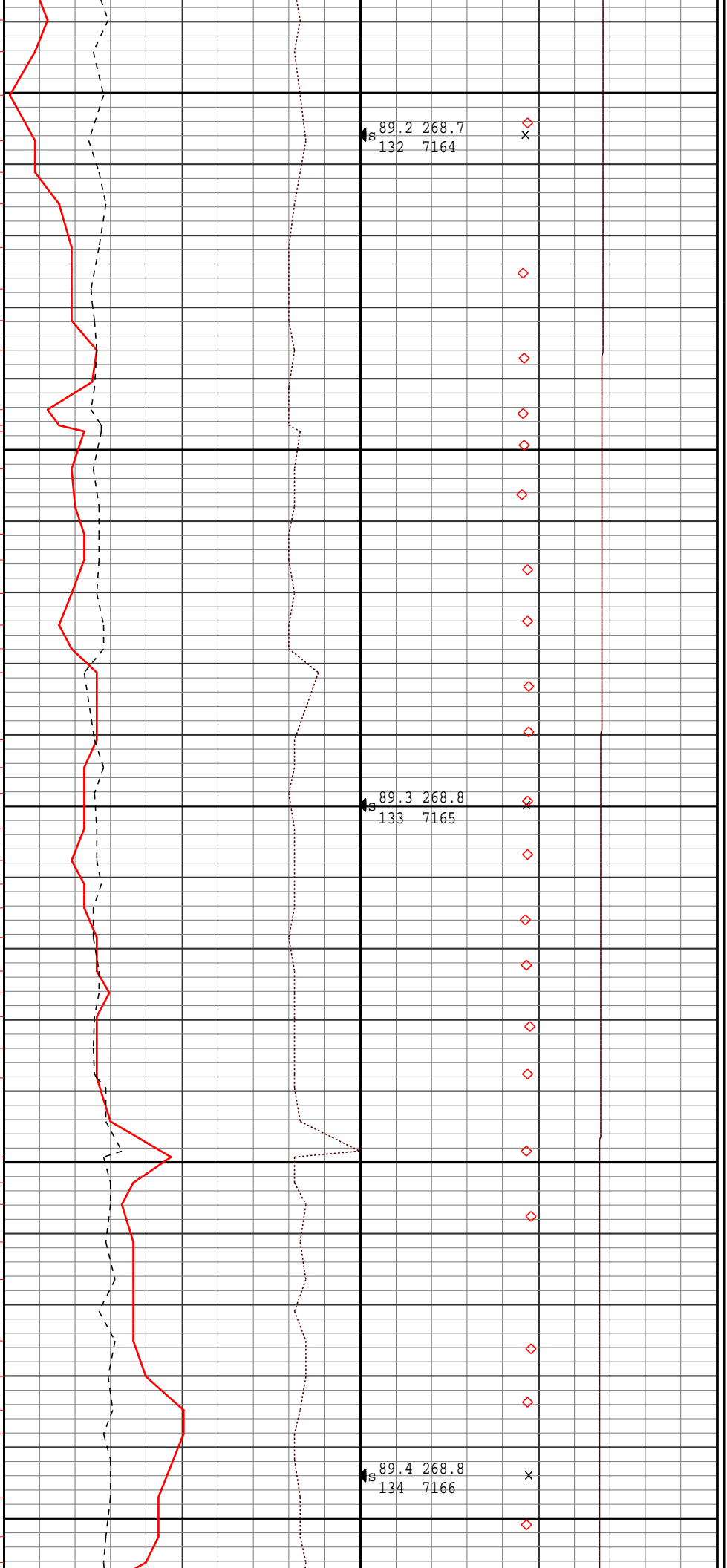
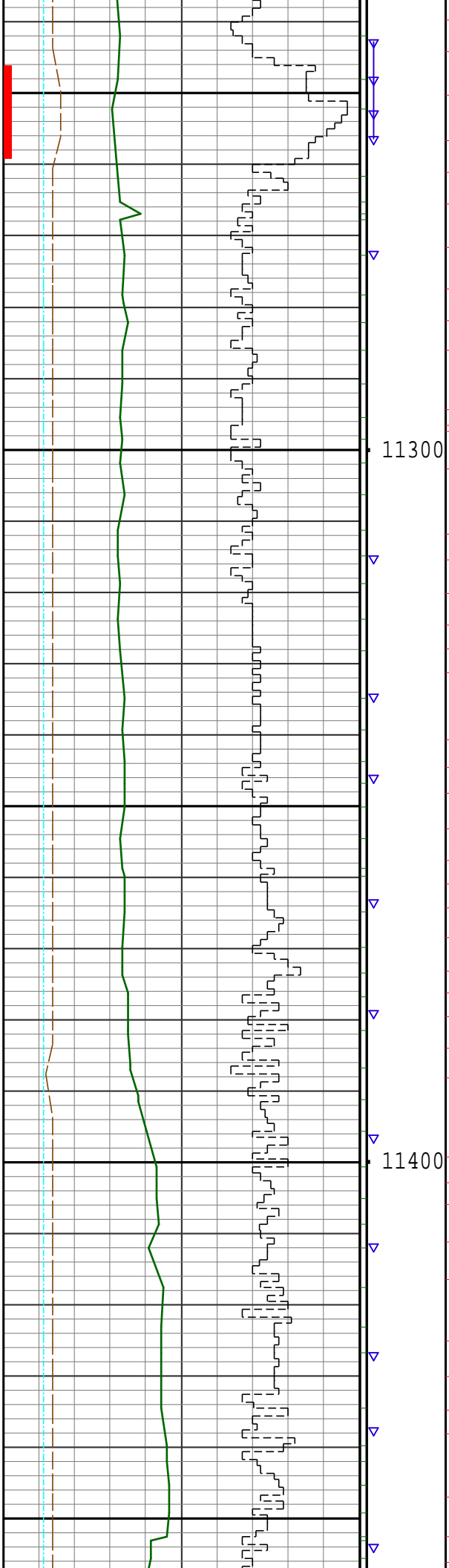


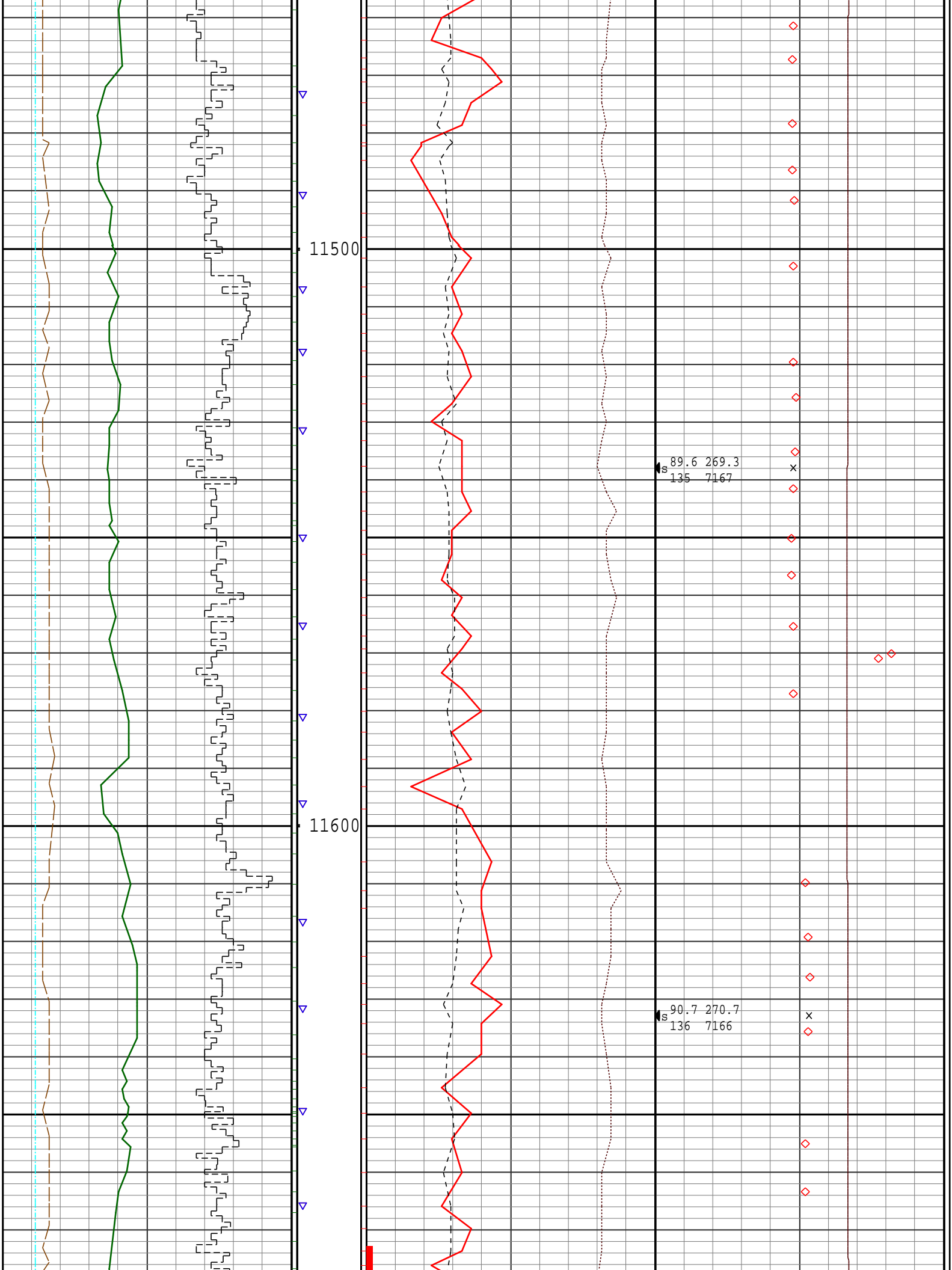


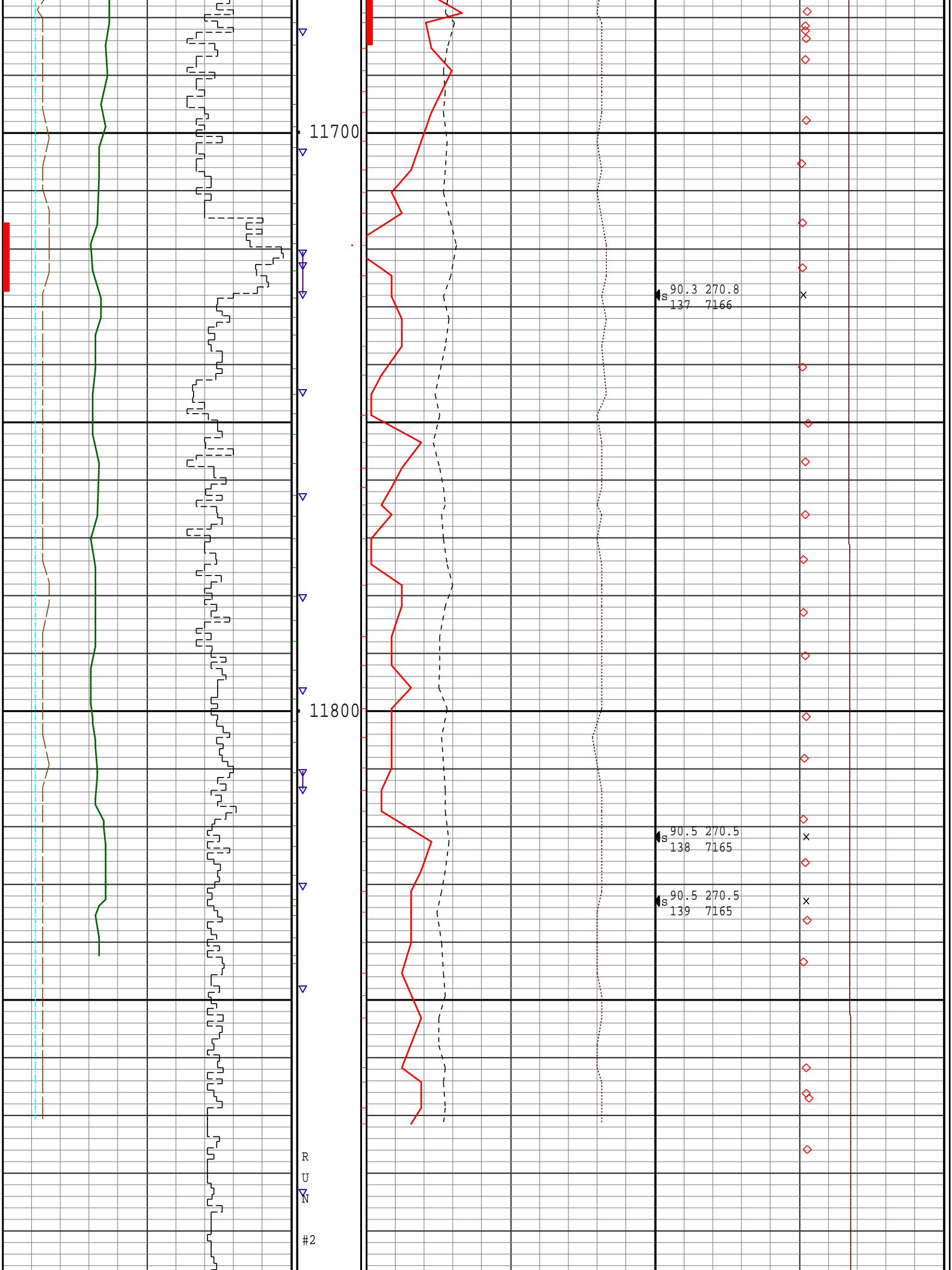












			11900								
						PROJECTED ==>> 90.5 270.5			x		
						SURVEY			140 7164		
0 GRC API 300			0 VIBXYG 20			20 DPHI pu 0			7300 TVD ft 7100		
avg = 6 in			0 VIBXYG 20			-0.8 DRHO g/cc 0.2			80 INC deg 100		
1000 ROP ft/hr 0			▽ ▽ ▽			0 PE 10			x x x		
avg = 1 ft			0 VIBZG 20						80 DINC_I deg 100		
5 CALI in 15			0 VIBZG 20			SLIDE (DEN)			◇ ◇ ◇		
5 BS in 15			▽ ▽ ▽						inc azi		
			DEPTH						# TVD		
SLIDE (BIT)			MD ft								
			5" = 100ft								
			COMMENTS								
			SHOES								