



Sonic Bond Log
Gamma-Ray
CCL

Company KERR-McGEE OIL & GAS ONSHORE LP
Well PLATTE 25-35
Field WATTENBERG
County WELD State COLORADO

Location: API # : 05-123-24265 Other Services

SW/NE

SEC 35 TWP 4N RGE 67W

Permanent Datum GL Elevation 4750
Log Measured From KB 12'
Drilling Measured From KB KB, 4762
D.F. 4761
G.L. 4750

Date 8/4/2014

Run Number ONE
Depth Driller 7888
Depth Logger 1800
Bottom Logged Interval 1800
Top Log Interval surface
Open Hole Size 7 7/8"
Type Fluid WATER
Density / Viscosity 1.0
Max. Recorded Temp.
Estimated Cement Top
Time Well Ready
Time Logger on Bottom
Equipment Number 3812
Location GREELEY
Recorded By C. Baum
Witnessed By Ryan Thompson

Borehole Record
Run Number Bit From To Size Weight From To
ONE 12 1/4" 0 669
TWO 7 7/8" 669 7888

Tubing Record
Casing Record Size Wgt/Ft Top Bottom
Surface String 8 5/8" 24# 0 669
Prot. String
Production String 4 1/2" 11.6# 0 7881
Liner

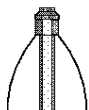
<<< Fold Here >>>

All interpretations are opinions based on inferences from electrical or other measurements and we cannot and do not guarantee the accuracy or correctness of any interpretation, and we shall not, except in the case of gross or willful negligence on our part, be liable or responsible for any loss, costs, damages, or expenses incurred or sustained by anyone resulting from any interpretation made by any of our officers, agents or employees. These interpretations are also subject to our general terms and conditions set out in our current Price Schedule.

Comments

NO OPEN HOLE LOG.

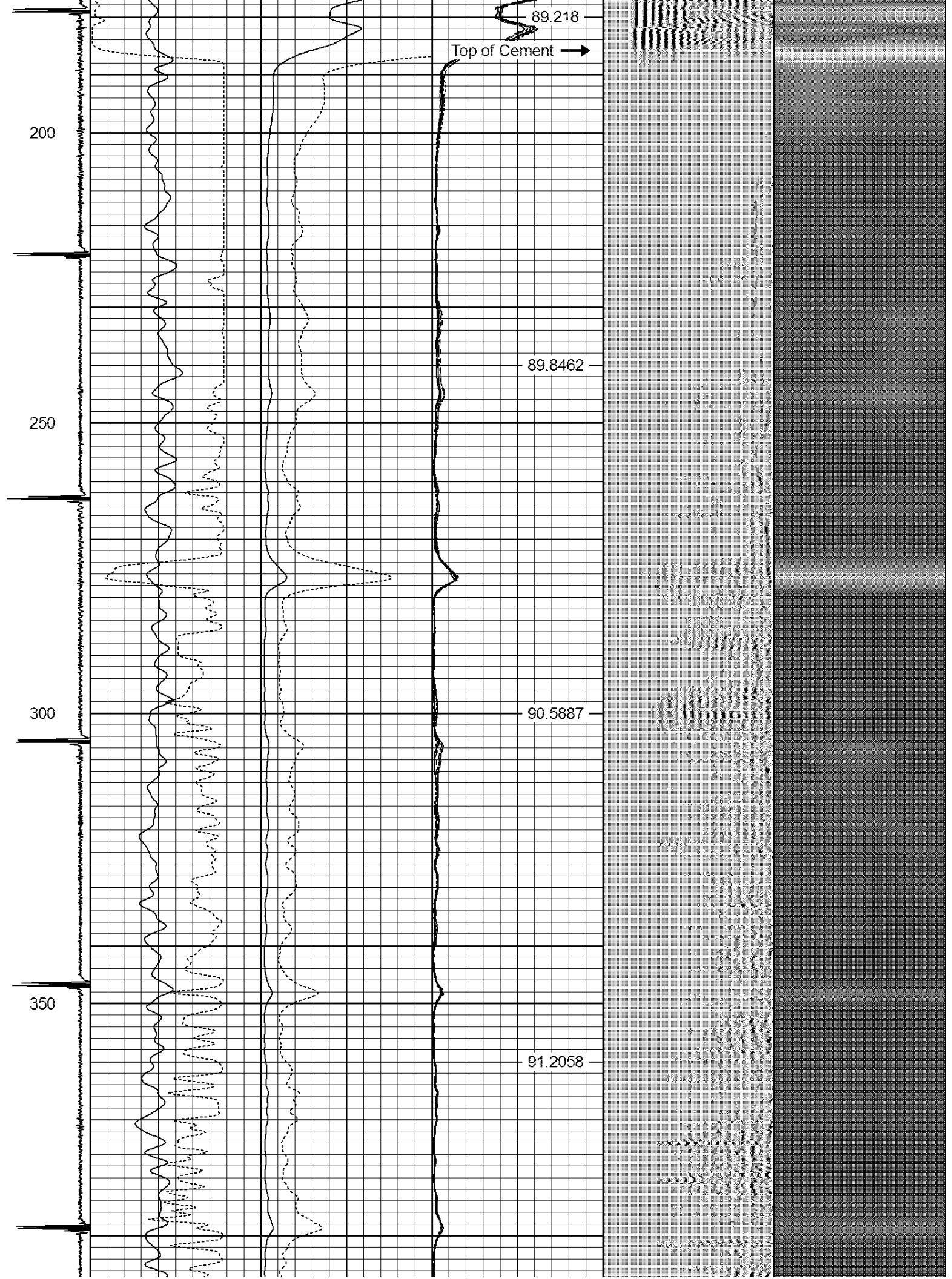
THANK YOU FOR USING WARRIOR.

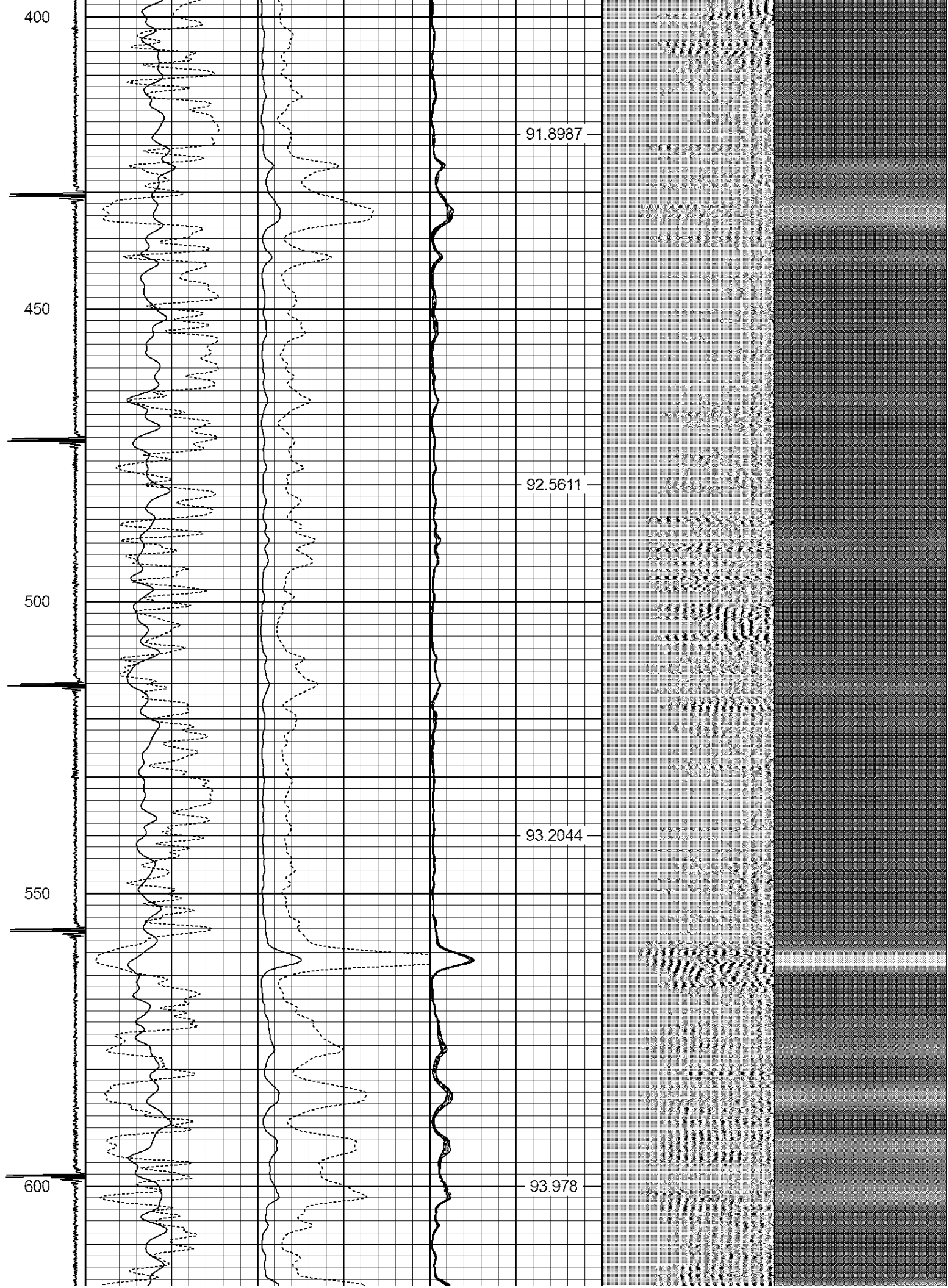
Sensor	Offset (ft)	Schematic	Description	Len (ft)	OD (in)	Wt (lb)
						

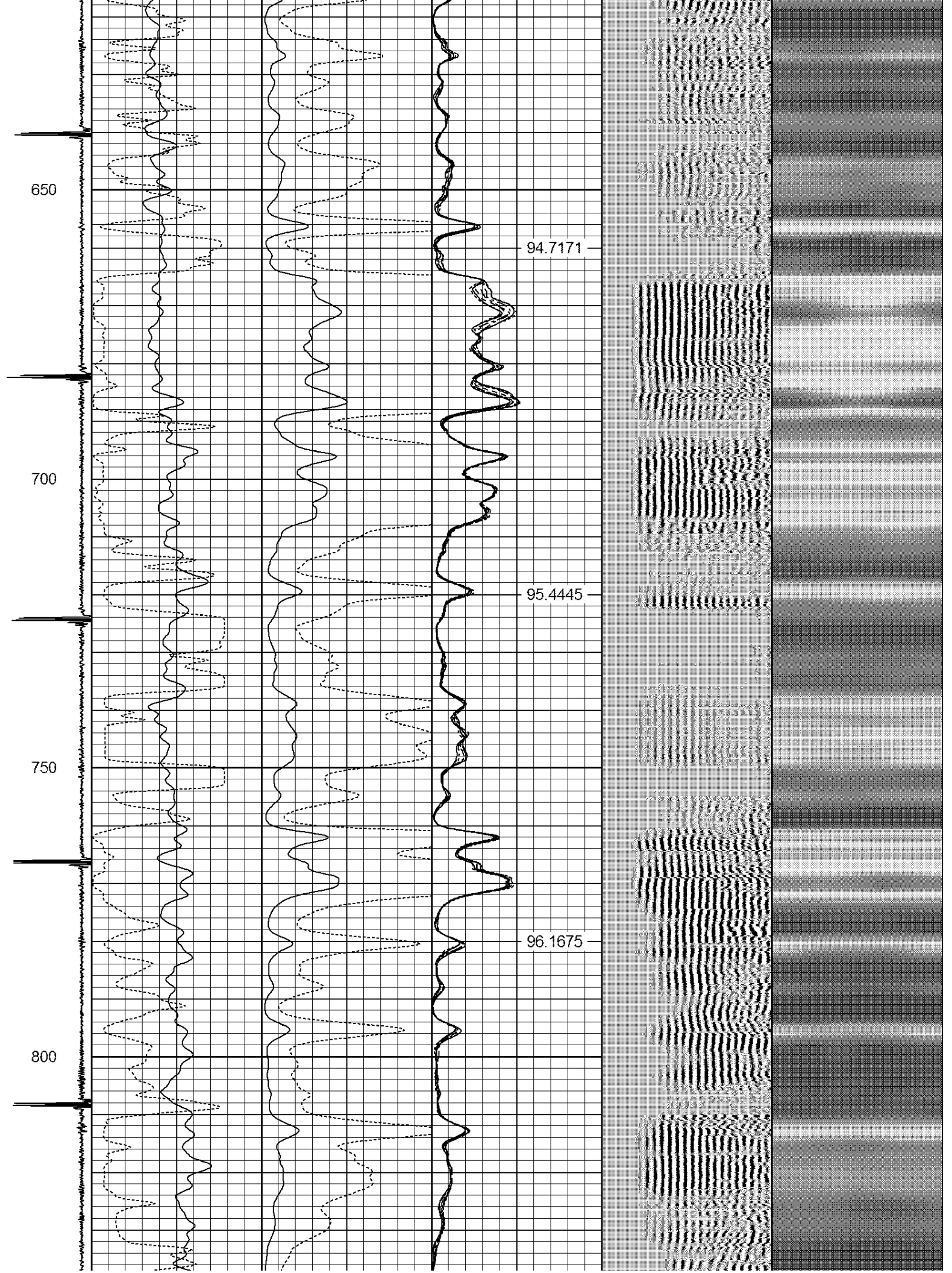
[illegible]

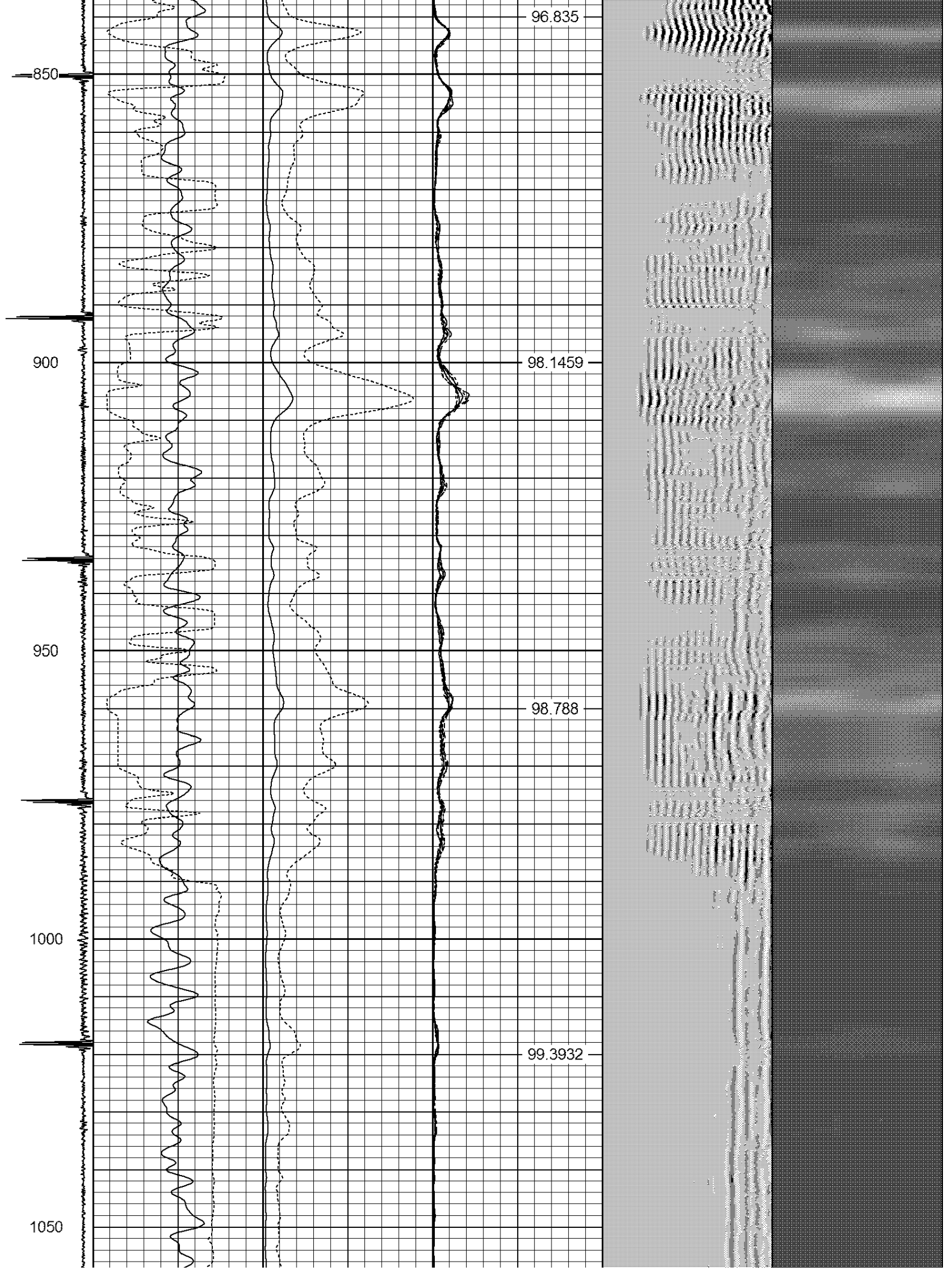
-9	CCL	1	250	TT (usec)	950	0	AMP (mV)	100	0	AMPS1	100	200	VDL	1200	1	Cement Map	8
LSPD			0	GR (GAPI)	200	0	AMPx5 (mV)	20	0	AMPS2	100				1		100
(ft/min)			200	GR (GAPI)	400				0	AMPS4	100						
0		250							0	AMPS5	100						
									0	AMPS6	100						
									0	AMPS7	100						
									0	AMPS8	100						
										IntTemp							
										(degF)							

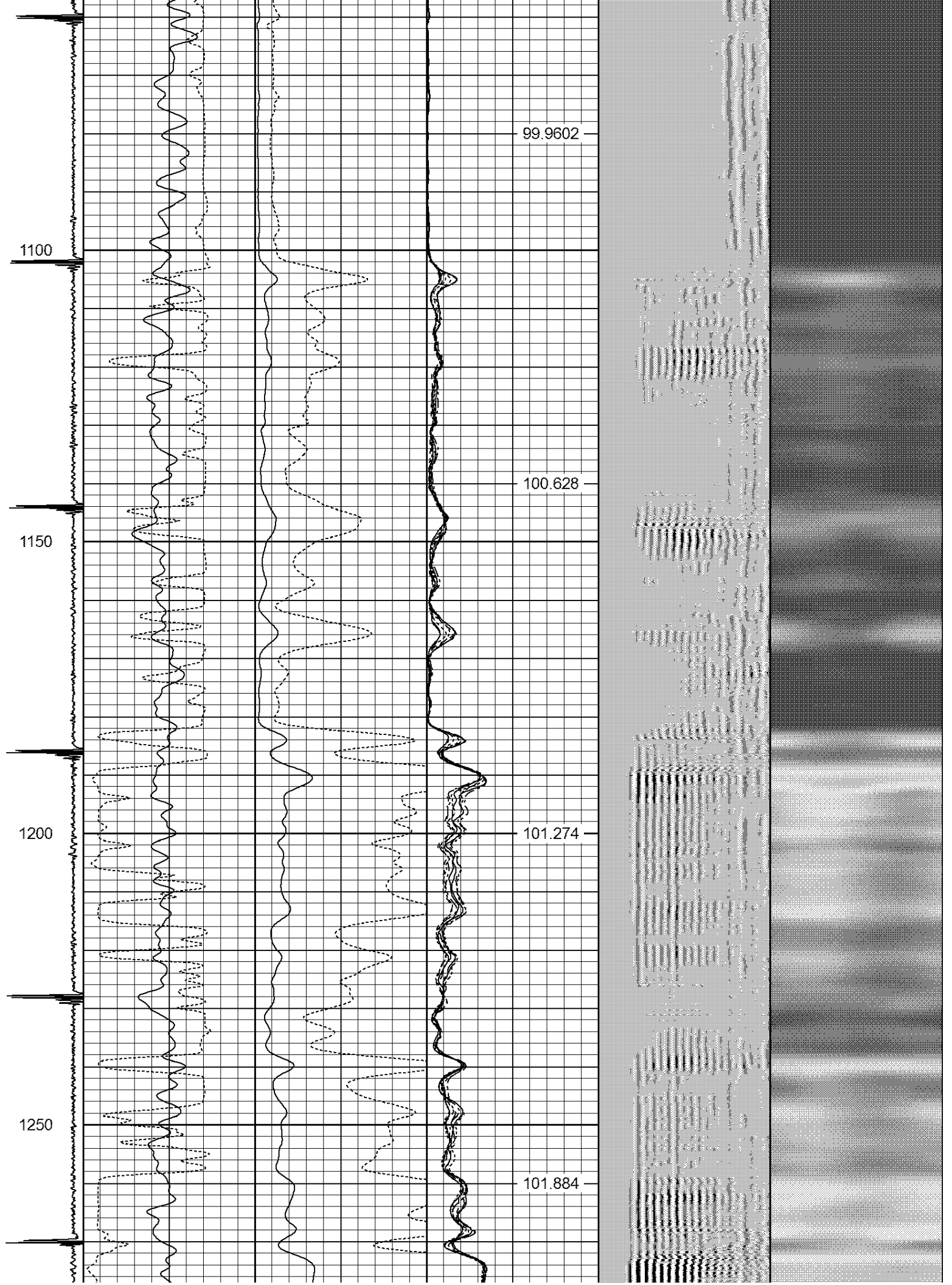


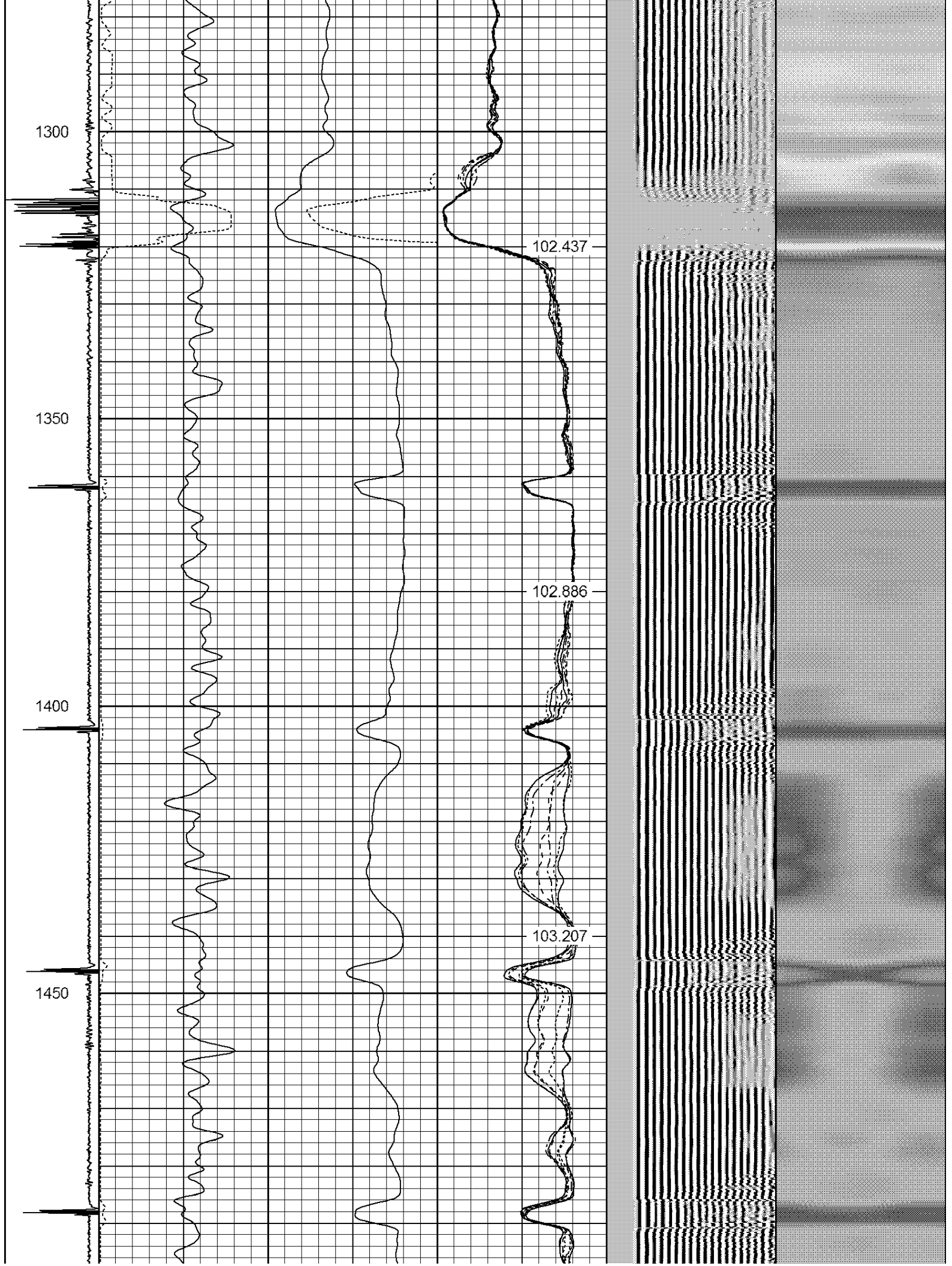


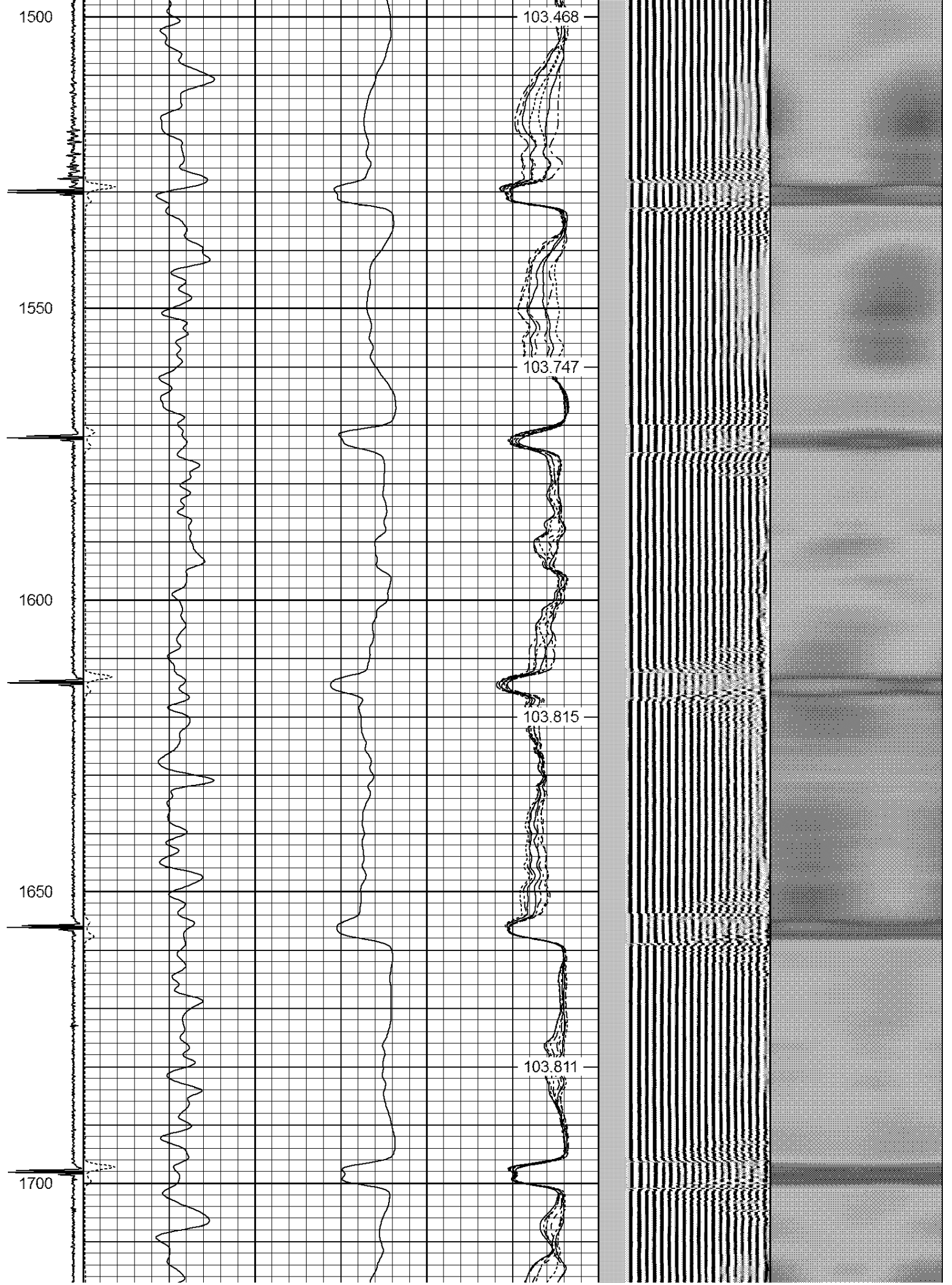


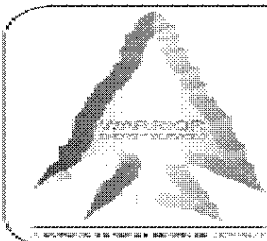
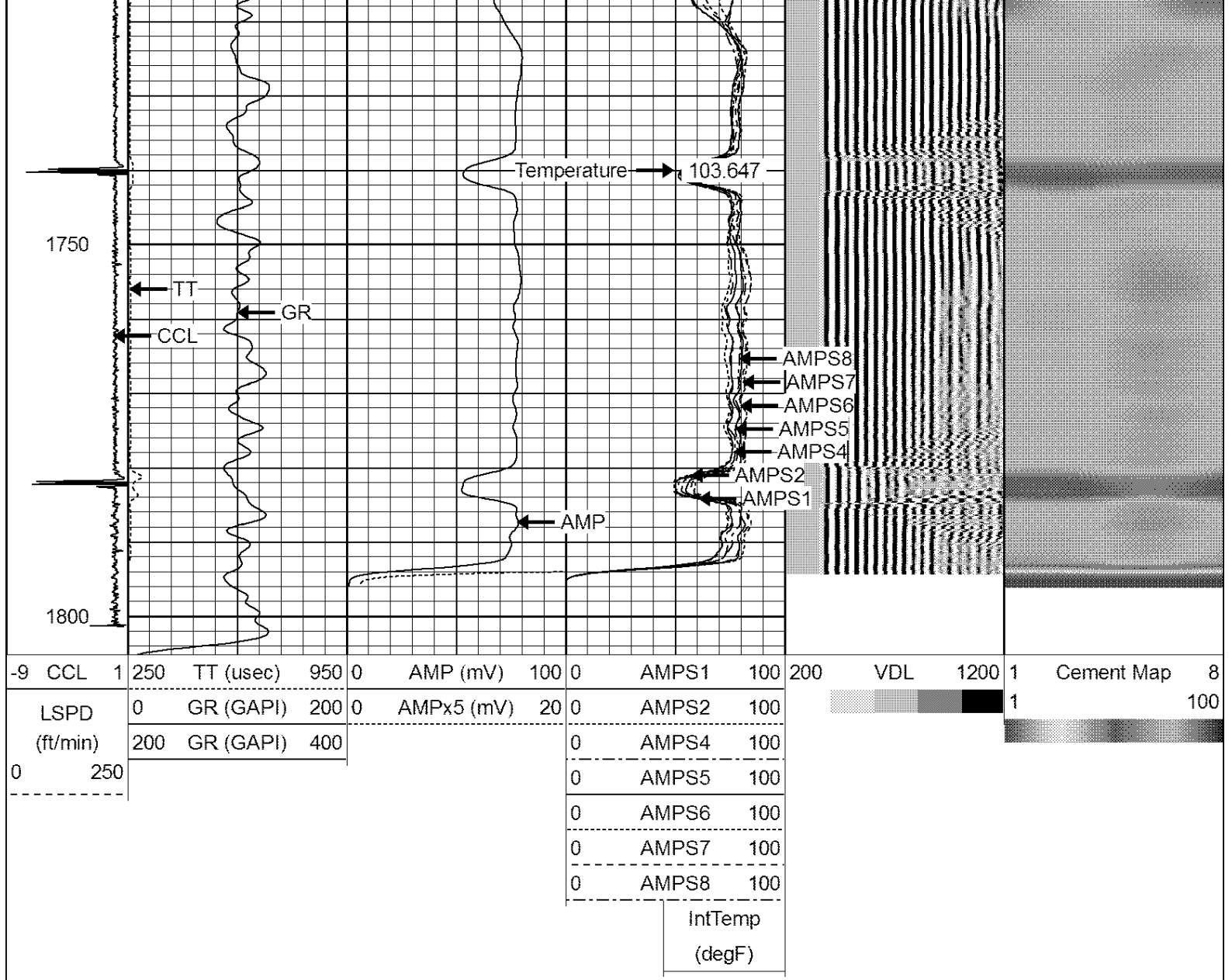












WARRIOR
ENERGY SERVICES

Company KERR-McGEE OIL & GAS ONSHORE LP

Well PLATTE 25-35

Field WATTENBERG

County WELD

State COLORADO