

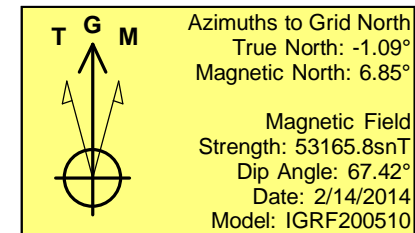
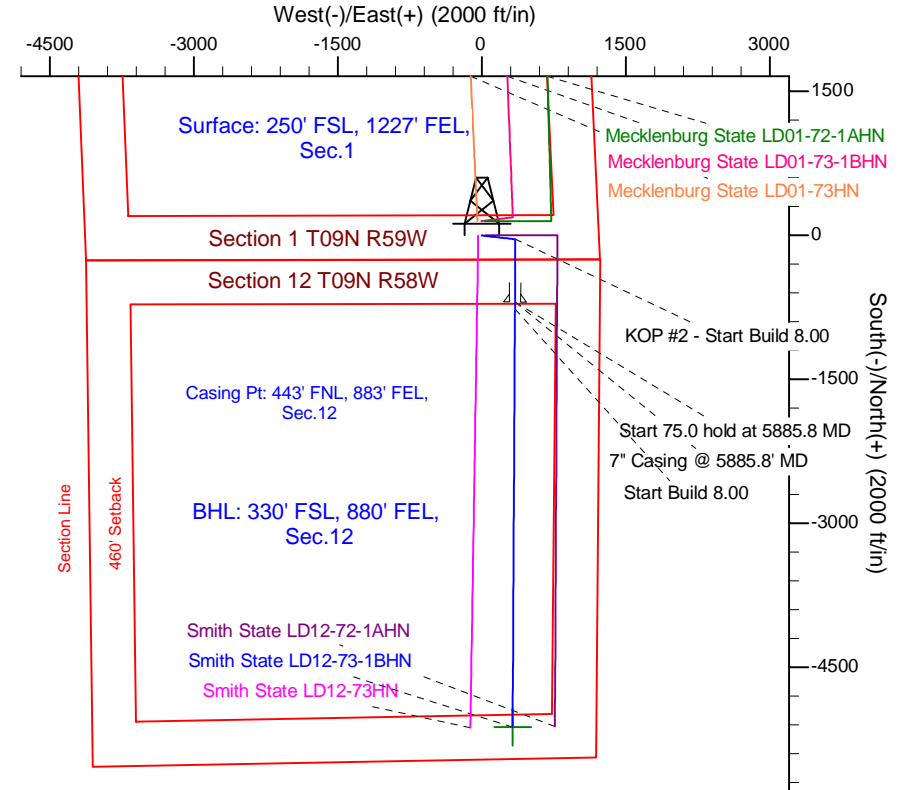
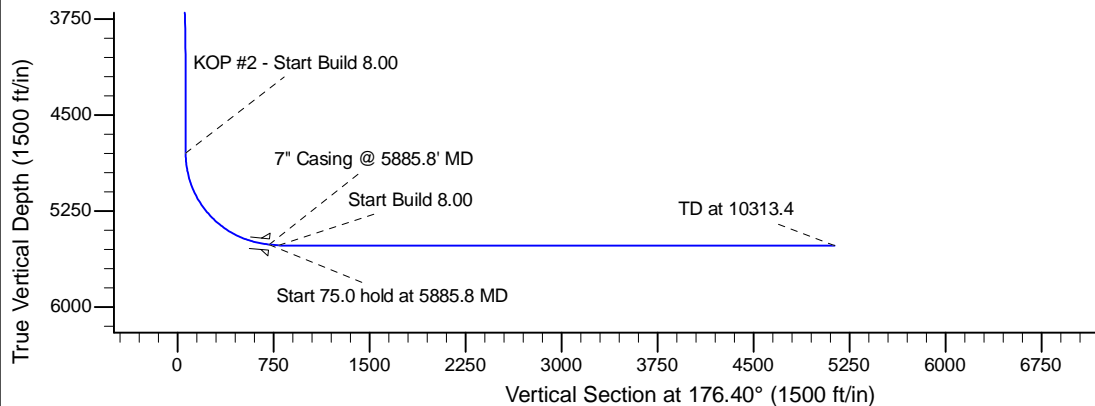
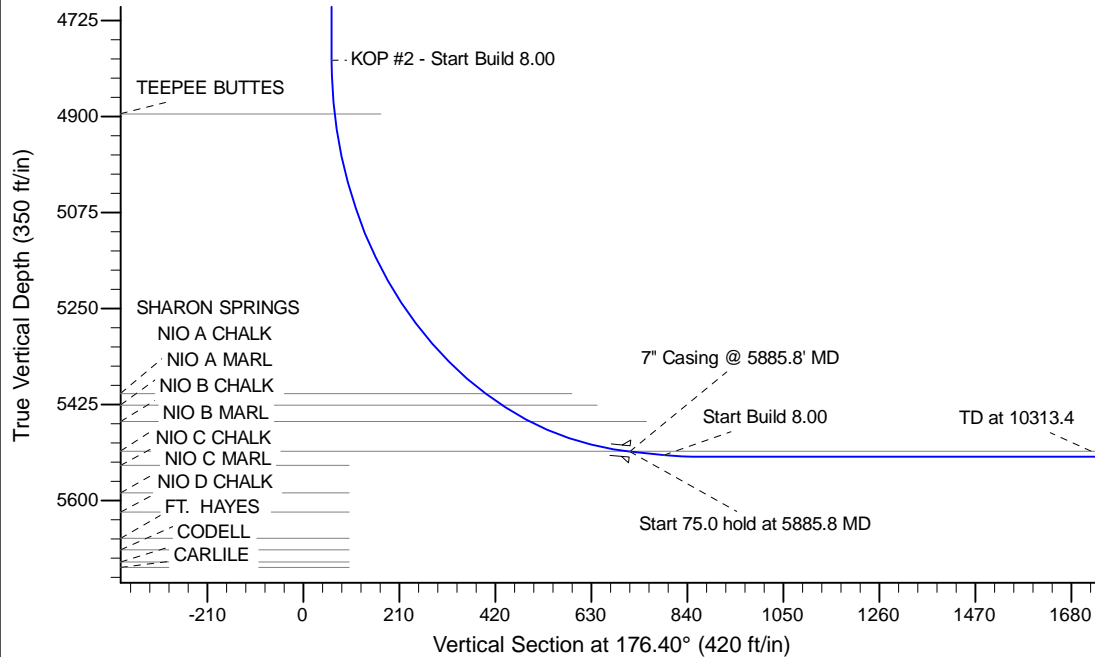
Project: Wattenberg Field
 Site: LD (Sec.1-T09N-R58W) Weld County, CO
 Well: Smith State LD12-73-1BHN
 Wellbore: Original Drilling
 Design: APD - Rev 1

Northern Region Drilling - Working

Geodetic System: US State Plane 1983
 Datum: North American Datum 1983
 Ellipsoid: GRS 1980
 Zone: Colorado Northern Zone
 System Datum: Mean Sea Level

SECTION DETAILS

Sec	MD	Inc	Azi	TVD	+N/-S	+E/-W	Dleg	TFace	VSec	Target
1	0.0	0.00	0.00	0.0	0.0	0.0	0.00	0.00	0.0	
2	1500.0	0.00	0.00	1500.0	0.0	0.0	0.00	0.00	0.0	
3	1952.5	9.05	96.52	1950.7	-4.1	35.4	2.00	96.52	6.3	
4	3738.5	9.05	96.52	3714.3	-35.9	314.6	0.00	0.00	55.6	
5	4191.0	0.00	0.00	4165.0	-40.0	350.0	2.00	180.00	61.9	
6	4823.3	0.00	0.00	4797.3	-40.0	350.0	0.00	0.00	61.9	
7	5885.8	85.00	180.31	5510.7	-693.8	346.4	8.00	180.31	714.2	
8	5960.8	85.00	180.31	5517.3	-768.5	346.0	0.00	0.00	788.7	
9	6023.3	90.00	180.31	5520.0	-830.9	345.7	8.00	0.00	851.0	
10	10313.4	90.00	180.31	5520.0	-5121.0	322.2	0.00	0.00	5131.1	Smith State LD12-73-1BHN BHL 330'FSL, 880'FEL



WELL DETAILS: Smith State LD12-73-1BHN					
Ground Level: 4653.0					
0.0	0.0	Northing 1529240.49	Easting 3468958.37	Latitude 40.773860	Longitude -103.806750
Plan: APD - Rev 1 (Smith State LD12-73-1BHN/Original Drilling)					
Created By: Shailey Jewell			Date: 10:49, August 06 2014		
OK to submit with 2A as per Noble Drilling					
8/6/2014 1:10					