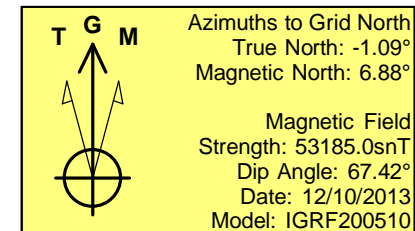
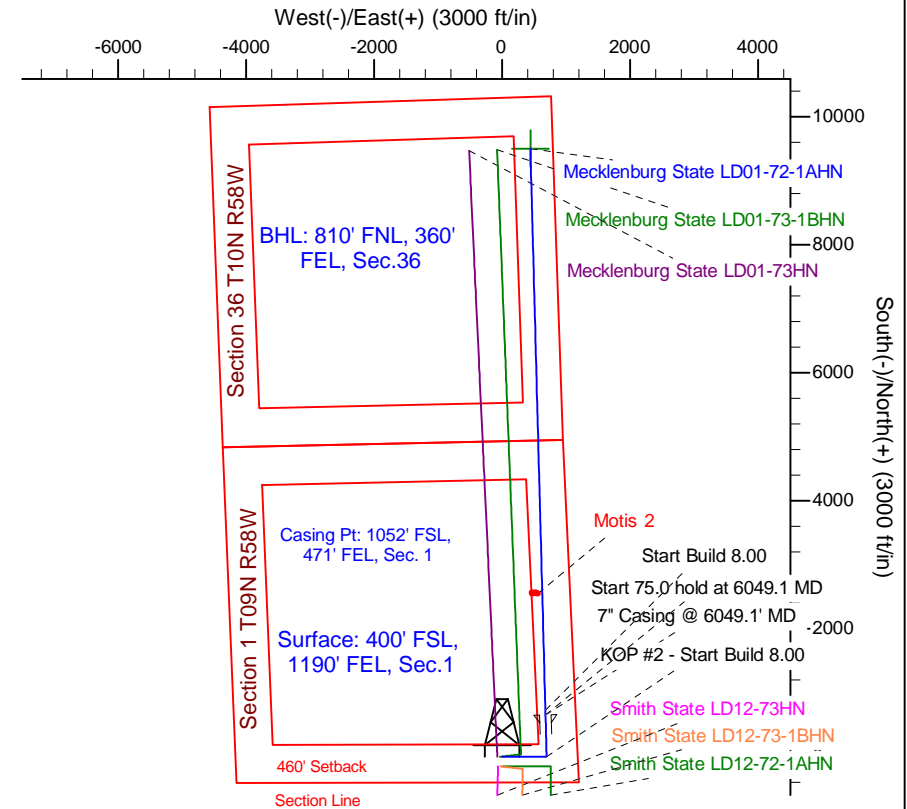
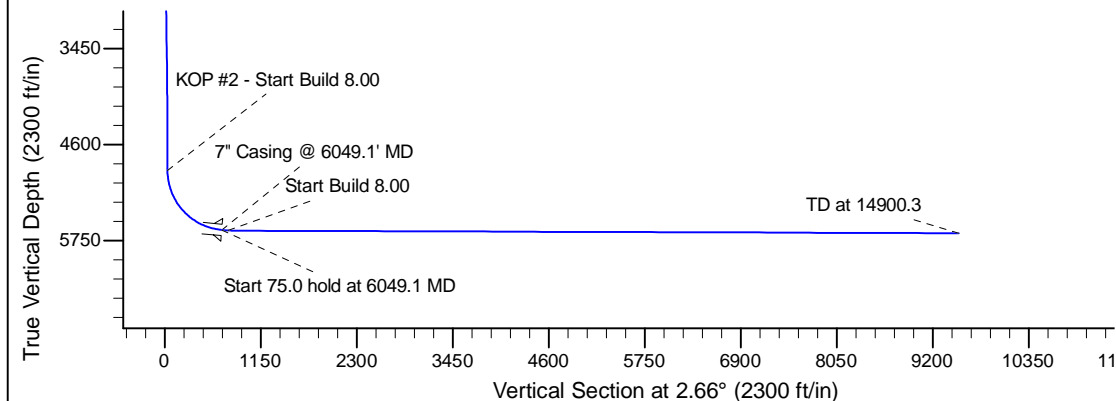
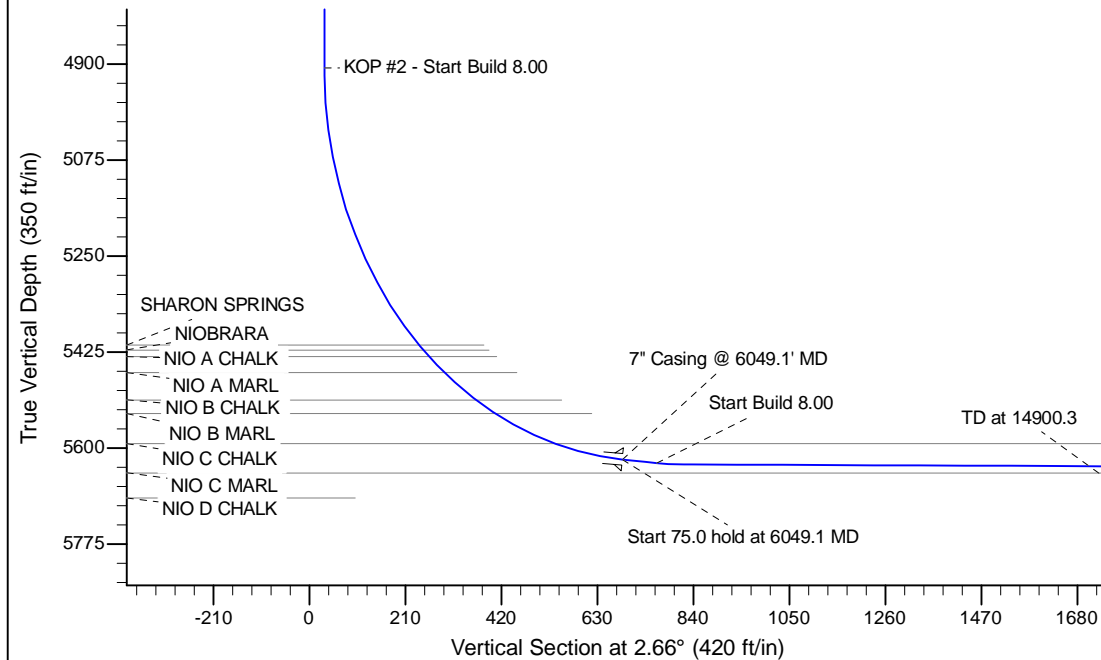


Project: Wattenberg Field
 Site: LD (Sec.1-T09N-R58W) Weld County, CO
 Well: Mecklenburg State LD01-72-1AHN
 Wellbore: Original Drilling
 Design: APD - Rev 1

Northern Region Drilling - Working

Geodetic System: US State Plane 1983
 Datum: North American Datum 1983
 Ellipsoid: GRS 1980
 Zone: Colorado Northern Zone
 System Datum: Mean Sea Level

SECTION DETAILS										
Sec	MD	Inc	Azi	TVD	+N/-S	+E/-W	Dleg	TFace	VSec	Target
1	0.0	0.00	0.00	0.0	0.0	0.0	0.00	0.00	0.0	
2	1200.0	0.00	0.00	1200.0	0.0	0.0	0.00	0.00	0.0	
3	1913.4	14.27	90.00	1906.1	0.0	88.4	2.00	90.00	4.1	
4	4016.1	14.27	90.00	3943.9	0.0	606.6	0.00	0.00	28.1	
5	4729.6	0.00	0.00	4650.0	0.0	695.0	2.00	180.00	32.2	
6	4986.6	0.00	0.00	4907.0	0.0	695.0	0.00	0.00	32.2	
7	6049.1	85.00	358.47	5620.5	653.5	677.6	8.00	358.47	684.3	
8	6124.1	85.00	358.47	5627.1	728.2	675.6	0.00	0.00	758.8	
9	6184.1	89.80	358.47	5629.8	788.1	674.0	8.00	0.00	818.6	
10	14900.3	89.80	358.47	5660.2	9501.2	441.6	0.00	0.00	9511.4	Mecklenburg St. LD01-72-1AHN BHL 810'FNL, 360'FEL



WELL DETAILS: Mecklenburg State LD01-72-1AHN				
Ground Level: 4652.0				
0.0	0.0	Northing 1529390.47	Easting 3468988.75	Latitude 40.774270
				Longitude -103.806630
Plan: APD - Rev 1 (Mecklenburg State LD01-72-1AHN/Original Drilling)				
Created By: Shailey Jewell			Date: 10:07, August 06 2014	
OK to submit with 2A as per Noble Drilling 8/6/2014 1:16				