

Tekton Energy

Well Name: **Pavistma 10 #1-3-32-090-8-CH**

Surface Location: Pavistma Pad Sec.32-T6N-R67W

North American Datum 1983 , US State Plane 1983 , Colorado Northern Zone

Ground Elevation: 4955.0

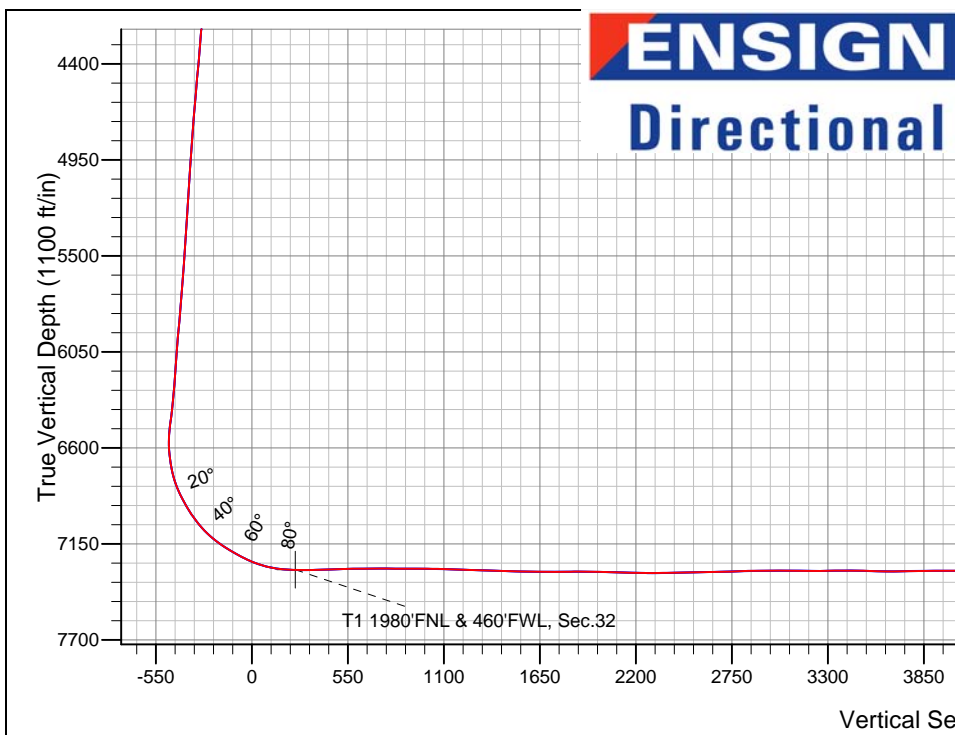
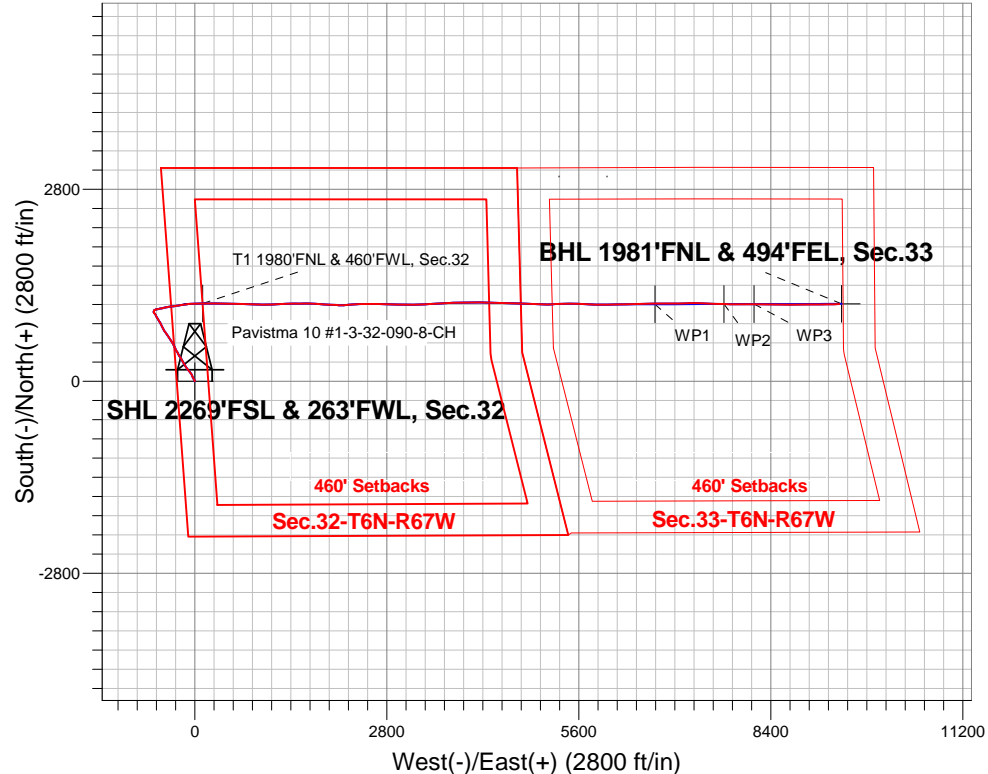
+N/-S	+E/-W	Northing	Easting	Latitude	Longitude	Slot
0.0	0.0	1404449.51	3160117.82	40.442190	-104.924730	

RKB - 22.5' WELL @ 4977.5ft (RKB - 22.5')

FINAL SURVEY

Projected Bottom Hole Location

17119'MD 7315'TVD 1127'N & 9399'E of SHL
92.0 degree Incl @ 87.9 degree AZM



Pavistma Pad Sec.32-T6N-R67W
Pavistma 10 #1-3-32-090-8-CH

9:25, December 20 2013

Wellbore #1

ANNOTATIONS

No annotation data is available.

LEGEND

- Pavistma 10 #1-3-32-090-8-CH, Wellbore #1, Plan #5 (12-13-13) V0
- Wellbore #1
- Survey #1



Tekton Energy

SEC.32-T6N-R67W

Pavistma Pad Sec.32-T6N-R67W

Pavistma 10 #1-3-32-090-8-CH

Wellbore #1

Survey: Survey #1

Standard Survey Report

20 December, 2013

Company:	Tekton Energy	Local Co-ordinate Reference:	Well Pavistma 10 #1-3-32-090-8-CH
Project:	SEC.32-T6N-R67W	TVD Reference:	WELL @ 4977.5ft (RKB - 22.5')
Site:	Pavistma Pad Sec.32-T6N-R67W	MD Reference:	WELL @ 4977.5ft (RKB - 22.5')
Well:	Pavistma 10 #1-3-32-090-8-CH	North Reference:	True
Wellbore:	Wellbore #1	Survey Calculation Method:	Minimum Curvature
Design:	Wellbore #1	Database:	Landmark

Project	SEC.32-T6N-R67W, Weld County, CO		
Map System:	US State Plane 1983	System Datum:	Mean Sea Level
Geo Datum:	North American Datum 1983		Using Well Reference Point
Map Zone:	Colorado Northern Zone		Using geodetic scale factor

Site		Pavistma Pad Sec.32-T6N-R67W			
Site Position:		Northing:	1,404,402.19ft	Latitude:	40.442060
From:	Lat/Long	Easting:	3,160,120.91ft	Longitude:	-104.924720
Position Uncertainty:	0.0 ft	Slot Radius:	"	Grid Convergence:	0.37 °

Well	Pavistma 10 #1-3-32-090-8-CH					
Well Position	+N/-S	0.0 ft	Northing:	1,404,449.51 ft	Latitude:	40.442190
	+E/-W	0.0 ft	Easting:	3,160,117.82 ft	Longitude:	-104.924730
Position Uncertainty		0.0 ft	Wellhead Elevation:	ft	Ground Level:	4,955.0 ft

Wellbore	Wellbore #1				
Magnetics	Model Name	Sample Date	Declination (°)	Dip Angle (°)	Field Strength (nT)
	IGRF2010	12/9/2013	8.62	66.97	52,873

Design	Wellbore #1				
Audit Notes:					
Version:	1.0	Phase:	ACTUAL	Tie On Depth:	0.0
Vertical Section:	Depth From (TVD) (ft)	+N/-S (ft)	+E/-W (ft)	Direction (°)	
	0.0	0.0	0.0	83.18	

Survey Program	Date	12/20/2013			
From (ft)	To (ft)	Survey (Wellbore)	Tool Name	Description	
223.0	17,119.0	Survey #1 (Wellbore #1)	MWD	MWD - Standard	

Survey										
Measured Depth (ft)	Inclination (°)	Azimuth (°)	Vertical Depth (ft)	+N/-S (ft)	+E/-W (ft)	Vertical Section (ft)	Dogleg Rate (°/100ft)	Build Rate (°/100ft)	Turn Rate (°/100ft)	
0.0	0.00	0.00	0.0	0.0	0.0	0.0	0.00	0.00	0.00	
1.0	0.00	351.10	1.0	0.0	0.0	0.0	0.00	0.00	0.00	
SHL 2269'FSL & 263'FWL, Sec.32										
223.0	0.30	351.10	223.0	0.6	-0.1	0.0	0.14	0.14	0.00	
315.0	0.50	322.10	315.0	1.1	-0.4	-0.2	0.30	0.22	-31.52	
407.0	0.70	302.50	407.0	1.8	-1.1	-0.9	0.31	0.22	-21.30	
499.0	1.60	338.60	499.0	3.2	-2.0	-1.6	1.21	0.98	39.24	
591.0	2.90	344.50	590.9	6.7	-3.1	-2.3	1.43	1.41	6.41	
684.0	5.10	343.70	683.7	12.9	-4.9	-3.3	2.37	2.37	-0.86	
776.0	7.00	331.70	775.2	21.8	-8.7	-6.1	2.47	2.07	-13.04	
855.0	8.50	326.40	853.4	30.9	-14.2	-10.5	2.10	1.90	-6.71	
914.0	9.10	326.40	911.7	38.4	-19.2	-14.5	1.02	1.02	0.00	
1,008.0	10.00	336.10	1,004.4	52.1	-26.7	-20.3	1.96	0.96	10.32	

Company:	Tekton Energy	Local Co-ordinate Reference:	Well Pavistma 10 #1-3-32-090-8-CH
Project:	SEC.32-T6N-R67W	TVD Reference:	WELL @ 4977.5ft (RKB - 22.5')
Site:	Pavistma Pad Sec.32-T6N-R67W	MD Reference:	WELL @ 4977.5ft (RKB - 22.5')
Well:	Pavistma 10 #1-3-32-090-8-CH	North Reference:	True
Wellbore:	Wellbore #1	Survey Calculation Method:	Minimum Curvature
Design:	Wellbore #1	Database:	Landmark

Survey

Measured Depth (ft)	Inclination (°)	Azimuth (°)	Vertical Depth (ft)	+N/-S (ft)	+E/-W (ft)	Vertical Section (ft)	Dogleg Rate (°/100ft)	Build Rate (°/100ft)	Turn Rate (°/100ft)
1,104.0	12.10	339.80	1,098.7	69.1	-33.5	-25.1	2.31	2.19	3.85
1,198.0	14.30	334.70	1,190.2	88.9	-41.9	-31.0	2.65	2.34	-5.43
1,290.0	14.60	327.00	1,279.3	108.9	-53.0	-39.7	2.11	0.33	-8.37
1,383.0	12.80	321.70	1,369.6	126.8	-65.8	-50.3	2.36	-1.94	-5.70
1,475.0	12.20	322.60	1,459.4	142.5	-78.0	-60.6	0.69	-0.65	0.98
1,567.0	11.40	321.30	1,549.5	157.3	-89.6	-70.3	0.92	-0.87	-1.41
1,659.0	10.30	318.20	1,639.9	170.6	-100.8	-79.8	1.35	-1.20	-3.37
1,751.0	10.00	323.30	1,730.4	183.1	-111.0	-88.5	1.03	-0.33	5.54
1,843.0	9.60	326.30	1,821.1	195.9	-120.1	-96.0	0.70	-0.43	3.26
1,935.0	10.00	323.30	1,911.7	208.7	-129.1	-103.4	0.70	0.43	-3.26
2,027.0	10.00	328.40	2,002.3	221.9	-138.1	-110.8	0.96	0.00	5.54
2,120.0	10.80	329.30	2,093.8	236.2	-146.7	-117.7	0.88	0.86	0.97
2,213.0	11.00	330.50	2,185.1	251.5	-155.6	-124.6	0.33	0.22	1.29
2,308.0	12.70	332.20	2,278.1	268.6	-164.9	-131.9	1.83	1.79	1.79
2,401.0	12.20	326.10	2,368.9	285.8	-175.1	-140.0	1.51	-0.54	-6.56
2,495.0	12.50	332.40	2,460.7	303.0	-185.4	-148.1	1.47	0.32	6.70
2,586.0	12.80	331.90	2,549.5	320.7	-194.7	-155.3	0.35	0.33	-0.55
2,680.0	12.10	329.40	2,641.3	338.3	-204.6	-163.0	0.94	-0.74	-2.66
2,774.0	11.30	322.00	2,733.4	354.1	-215.3	-171.8	1.81	-0.85	-7.87
2,868.0	11.30	327.70	2,825.6	369.1	-225.9	-180.5	1.19	0.00	6.06
2,963.0	11.30	333.30	2,918.7	385.3	-235.1	-187.7	1.15	0.00	5.89
3,055.0	12.70	333.10	3,008.7	402.4	-243.7	-194.2	1.52	1.52	-0.22
3,149.0	12.10	330.00	3,100.5	420.1	-253.3	-201.6	0.95	-0.64	-3.30
3,243.0	11.50	326.10	3,192.5	436.4	-263.4	-209.8	1.06	-0.64	-4.15
3,337.0	9.90	330.50	3,284.9	451.2	-272.6	-217.2	1.91	-1.70	4.68
3,431.0	10.40	337.00	3,377.4	466.1	-279.9	-222.6	1.33	0.53	6.91
3,525.0	10.90	339.10	3,469.8	482.2	-286.4	-227.2	0.67	0.53	2.23
3,620.0	12.70	333.30	3,562.8	499.9	-294.3	-232.9	2.27	1.89	-6.11
3,714.0	13.30	332.20	3,654.4	518.7	-304.0	-240.3	0.69	0.64	-1.17
3,808.0	13.50	332.60	3,745.8	538.0	-314.1	-248.0	0.23	0.21	0.43
3,901.0	14.10	332.10	3,836.1	557.7	-324.4	-255.9	0.66	0.65	-0.54
3,995.0	13.30	327.00	3,927.5	576.8	-335.6	-264.8	1.54	-0.85	-5.43
4,090.0	11.00	322.00	4,020.3	593.2	-347.2	-274.3	2.66	-2.42	-5.26
4,184.0	10.70	326.30	4,112.7	607.5	-357.5	-282.9	0.92	-0.32	4.57
4,277.0	11.30	326.80	4,204.0	622.3	-367.3	-290.9	0.65	0.65	0.54
4,373.0	10.60	327.00	4,298.2	637.6	-377.3	-298.9	0.73	-0.73	0.21
4,467.0	10.00	324.50	4,390.7	651.5	-386.7	-306.7	0.80	-0.64	-2.66
4,561.0	9.50	321.00	4,483.3	664.1	-396.4	-314.7	0.82	-0.53	-3.72
4,655.0	10.20	324.00	4,575.9	676.9	-406.1	-322.9	0.92	0.74	3.19
4,751.0	10.30	328.90	4,670.4	691.1	-415.6	-330.6	0.91	0.10	5.10
4,843.0	10.20	327.50	4,760.9	705.0	-424.2	-337.5	0.29	-0.11	-1.52
4,938.0	9.80	326.10	4,854.5	718.8	-433.2	-344.8	0.49	-0.42	-1.47
5,033.0	8.40	325.00	4,948.3	731.2	-441.7	-351.8	1.48	-1.47	-1.16
5,126.0	8.70	328.90	5,040.3	742.8	-449.2	-357.9	0.70	0.32	4.19
5,222.0	9.80	332.60	5,135.0	756.3	-456.7	-363.7	1.30	1.15	3.85
5,316.0	10.50	333.60	5,227.6	771.1	-464.2	-369.4	0.77	0.74	1.06
5,409.0	11.20	337.30	5,318.9	787.0	-471.5	-374.7	1.06	0.75	3.98
5,503.0	10.80	330.10	5,411.2	803.0	-479.4	-380.7	1.52	-0.43	-7.66
5,598.0	11.30	331.40	5,504.4	818.9	-488.3	-387.6	0.59	0.53	1.37
5,691.0	11.50	333.80	5,595.6	835.3	-496.7	-394.1	0.55	0.22	2.58
5,785.0	12.30	333.10	5,687.6	852.6	-505.4	-400.6	0.86	0.85	-0.74
5,879.0	11.50	327.10	5,779.5	869.4	-515.0	-408.2	1.57	-0.85	-6.38
5,973.0	12.00	328.00	5,871.6	885.5	-525.3	-416.5	0.57	0.53	0.96
6,068.0	11.10	327.50	5,964.6	901.6	-535.4	-424.6	0.95	-0.95	-0.53

Company:	Tekton Energy	Local Co-ordinate Reference:	Well Pavistma 10 #1-3-32-090-8-CH
Project:	SEC.32-T6N-R67W	TVD Reference:	WELL @ 4977.5ft (RKB - 22.5')
Site:	Pavistma Pad Sec.32-T6N-R67W	MD Reference:	WELL @ 4977.5ft (RKB - 22.5')
Well:	Pavistma 10 #1-3-32-090-8-CH	North Reference:	True
Wellbore:	Wellbore #1	Survey Calculation Method:	Minimum Curvature
Design:	Wellbore #1	Database:	Landmark

Survey

Measured Depth (ft)	Inclination (°)	Azimuth (°)	Vertical Depth (ft)	+N/-S (ft)	+E/-W (ft)	Vertical Section (ft)	Dogleg Rate (°/100ft)	Build Rate (°/100ft)	Turn Rate (°/100ft)
6,162.0	10.80	329.80	6,056.9	916.9	-544.7	-432.1	0.56	-0.32	2.45
6,256.0	12.10	334.70	6,149.1	933.4	-553.4	-438.7	1.73	1.38	5.21
6,350.0	12.40	334.00	6,240.9	951.4	-562.0	-445.1	0.36	0.32	-0.74
6,444.0	12.20	324.90	6,332.8	968.6	-572.1	-453.1	2.07	-0.21	-9.68
6,539.0	13.50	320.30	6,425.4	985.3	-585.0	-463.9	1.74	1.37	-4.84
6,586.0	11.50	318.90	6,471.3	993.1	-591.6	-469.5	4.30	-4.26	-2.98
6,633.0	10.10	322.80	6,517.4	999.9	-597.2	-474.3	3.36	-2.98	8.30
6,680.0	9.20	351.10	6,563.8	1,006.9	-600.2	-476.5	10.17	-1.91	60.21
6,728.0	10.60	12.10	6,611.1	1,015.0	-599.9	-475.2	8.01	2.92	43.75
6,775.0	12.60	34.60	6,657.2	1,023.4	-596.1	-470.4	10.44	4.26	47.87
6,822.0	14.00	36.40	6,702.9	1,032.2	-589.8	-463.1	3.11	2.98	3.83
6,869.0	14.50	57.10	6,748.5	1,040.0	-581.5	-453.9	10.84	1.06	44.04
6,917.0	18.10	72.30	6,794.6	1,045.6	-569.3	-441.2	11.57	7.50	31.67
6,964.0	23.90	77.40	6,838.4	1,049.9	-553.1	-424.5	12.93	12.34	10.85
7,011.0	26.80	79.50	6,880.9	1,053.9	-533.3	-404.5	6.46	6.17	4.47
7,058.0	29.50	79.50	6,922.3	1,057.9	-511.5	-382.4	5.74	5.74	0.00
7,104.0	32.80	78.20	6,961.7	1,062.5	-488.2	-358.6	7.32	7.17	-2.83
7,151.0	36.10	76.50	7,000.5	1,068.4	-462.3	-332.2	7.31	7.02	-3.62
7,198.0	39.10	77.50	7,037.7	1,074.8	-434.3	-303.7	6.51	6.38	2.13
7,245.0	43.40	79.10	7,073.0	1,081.1	-404.0	-272.8	9.42	9.15	3.40
7,292.0	48.70	82.50	7,105.6	1,086.4	-370.6	-239.0	12.42	11.28	7.23
7,339.0	53.20	83.20	7,135.2	1,091.0	-334.4	-202.5	9.64	9.57	1.49
7,385.0	56.50	82.50	7,161.7	1,095.6	-297.1	-164.9	7.28	7.17	-1.52
7,432.0	58.80	81.40	7,186.9	1,101.2	-257.8	-125.3	5.28	4.89	-2.34
7,480.0	60.90	80.50	7,211.0	1,107.7	-216.8	-83.8	4.67	4.38	-1.88
7,527.0	64.50	80.20	7,232.5	1,114.7	-175.6	-42.1	7.68	7.66	-0.64
7,574.0	68.10	82.50	7,251.4	1,121.2	-133.1	0.9	8.87	7.66	4.89
7,621.0	71.30	84.40	7,267.7	1,126.2	-89.3	45.0	7.79	6.81	4.04
7,668.0	76.30	86.30	7,280.8	1,129.9	-44.3	90.1	11.32	10.64	4.04
7,715.0	81.20	88.30	7,290.0	1,132.0	1.7	136.0	11.23	10.43	4.26
7,762.0	85.50	89.10	7,295.4	1,133.1	48.4	182.5	9.30	9.15	1.70
7,800.0	87.90	89.30	7,297.6	1,133.6	86.3	220.2	6.34	6.32	0.53
7,827.8	88.67	89.37	7,298.5	1,133.9	114.1	247.8	2.77	2.75	0.25
T1 1980°FNL & 460°FNL, Sec.32									
7,853.0	89.36	89.43	7,298.9	1,134.2	139.3	272.9	2.77	2.75	0.25
7,945.0	91.10	90.45	7,298.5	1,134.3	231.3	364.3	2.19	1.89	1.11
8,038.0	92.07	90.85	7,295.9	1,133.2	324.2	456.4	1.13	1.04	0.43
8,130.0	91.54	91.10	7,293.0	1,131.7	416.2	547.5	0.64	-0.58	0.27
8,222.0	90.92	91.07	7,291.1	1,129.9	508.1	638.6	0.67	-0.67	-0.03
8,314.0	89.96	90.49	7,290.4	1,128.7	600.1	729.8	1.22	-1.04	-0.63
8,406.0	88.90	91.52	7,291.3	1,127.1	692.1	821.0	1.61	-1.15	1.12
8,498.0	90.48	91.40	7,291.8	1,124.7	784.1	912.0	1.72	1.72	-0.13
8,591.0	89.50	92.65	7,291.8	1,121.4	877.0	1,003.9	1.71	-1.05	1.34
8,683.0	87.41	91.26	7,294.3	1,118.3	968.9	1,094.8	2.73	-2.27	-1.51
8,775.0	89.08	88.76	7,297.1	1,118.3	1,060.8	1,186.1	3.27	1.82	-2.72
8,867.0	88.20	87.43	7,299.3	1,121.3	1,152.8	1,277.7	1.73	-0.96	-1.45
8,959.0	88.55	87.29	7,301.9	1,125.6	1,244.6	1,369.4	0.41	0.38	-0.15
9,051.0	87.40	88.79	7,305.1	1,128.7	1,336.5	1,461.0	2.05	-1.25	1.63
9,144.0	88.64	89.00	7,308.4	1,130.5	1,429.4	1,553.5	1.35	1.33	0.23
9,236.0	89.16	88.81	7,310.1	1,132.3	1,521.4	1,645.0	0.60	0.57	-0.21
9,328.0	90.92	89.55	7,310.1	1,133.6	1,613.4	1,736.5	2.08	1.91	0.80
9,420.0	90.75	91.68	7,308.7	1,132.6	1,705.4	1,827.7	2.32	-0.18	2.32
9,512.0	88.90	95.44	7,309.0	1,126.9	1,797.2	1,918.2	4.55	-2.01	4.09
9,604.0	89.52	93.00	7,310.3	1,120.1	1,888.9	2,008.5	2.74	0.67	-2.65

Company:	Tekton Energy	Local Co-ordinate Reference:	Well Pavistma 10 #1-3-32-090-8-CH
Project:	SEC.32-T6N-R67W	TVD Reference:	WELL @ 4977.5ft (RKB - 22.5')
Site:	Pavistma Pad Sec.32-T6N-R67W	MD Reference:	WELL @ 4977.5ft (RKB - 22.5')
Well:	Pavistma 10 #1-3-32-090-8-CH	North Reference:	True
Wellbore:	Wellbore #1	Survey Calculation Method:	Minimum Curvature
Design:	Wellbore #1	Database:	Landmark

Survey

Measured Depth (ft)	Inclination (°)	Azimuth (°)	Vertical Depth (ft)	+N/-S (ft)	+E/-W (ft)	Vertical Section (ft)	Dogleg Rate (°/100ft)	Build Rate (°/100ft)	Turn Rate (°/100ft)
9,699.0	87.85	93.00	7,312.4	1,115.2	1,983.8	2,102.1	1.76	-1.76	0.00
9,792.0	88.64	92.55	7,315.3	1,110.7	2,076.6	2,193.7	0.98	0.85	-0.48
9,884.0	89.87	88.10	7,316.5	1,110.1	2,168.6	2,285.0	5.02	1.34	-4.84
9,978.0	91.54	84.58	7,315.3	1,116.1	2,262.3	2,378.8	4.14	1.78	-3.74
10,071.0	90.92	87.18	7,313.3	1,122.8	2,355.1	2,471.7	2.87	-0.67	2.80
10,163.0	90.92	87.34	7,311.9	1,127.2	2,447.0	2,563.5	0.17	0.00	0.17
10,257.0	91.10	90.79	7,310.2	1,128.7	2,540.9	2,656.9	3.67	0.19	3.67
10,349.0	91.89	91.39	7,307.8	1,127.0	2,632.9	2,748.0	1.08	0.86	0.65
10,441.0	91.54	91.89	7,305.0	1,124.4	2,724.8	2,839.0	0.66	-0.38	0.54
10,535.0	90.92	92.26	7,303.0	1,121.0	2,818.7	2,931.8	0.77	-0.66	0.39
10,627.0	89.52	91.41	7,302.7	1,118.0	2,910.7	3,022.8	1.78	-1.52	-0.92
10,720.0	89.25	90.11	7,303.7	1,116.8	3,003.6	3,115.0	1.43	-0.29	-1.40
10,812.0	89.69	88.87	7,304.5	1,117.6	3,095.6	3,206.4	1.43	0.48	-1.35
10,910.0	91.28	88.38	7,303.7	1,120.0	3,193.6	3,303.9	1.70	1.62	-0.50
11,004.0	90.75	88.63	7,302.0	1,122.4	3,287.5	3,397.5	0.62	-0.56	0.27
11,099.0	87.93	88.45	7,303.1	1,124.8	3,382.5	3,492.1	2.97	-2.97	-0.19
11,193.0	88.64	86.95	7,305.9	1,128.6	3,476.4	3,585.8	1.76	0.76	-1.60
11,287.0	90.48	87.30	7,306.7	1,133.3	3,570.3	3,679.5	1.99	1.96	0.37
11,382.0	91.98	88.11	7,304.6	1,137.1	3,665.2	3,774.2	1.79	1.58	0.85
11,476.0	89.87	87.80	7,303.1	1,140.5	3,759.1	3,867.9	2.27	-2.24	-0.33
11,570.0	89.08	87.33	7,304.0	1,144.5	3,853.0	3,961.6	0.98	-0.84	-0.50
11,664.0	90.57	87.59	7,304.3	1,148.6	3,946.9	4,055.3	1.61	1.59	0.28
11,759.0	91.71	88.78	7,302.4	1,151.6	4,041.8	4,149.9	1.73	1.20	1.25
11,853.0	89.69	90.68	7,301.2	1,152.1	4,135.8	4,243.3	2.95	-2.15	2.02
11,947.0	90.31	92.14	7,301.2	1,149.8	4,229.8	4,336.3	1.69	0.66	1.55
12,042.0	88.55	92.84	7,302.2	1,145.6	4,324.7	4,430.1	1.99	-1.85	0.74
12,136.0	88.20	90.88	7,304.8	1,142.6	4,418.6	4,523.0	2.12	-0.37	-2.09
12,231.0	88.72	90.87	7,307.4	1,141.1	4,513.5	4,617.1	0.55	0.55	-0.01
12,325.0	90.22	91.46	7,308.2	1,139.2	4,607.5	4,710.2	1.71	1.60	0.63
12,419.0	90.31	92.69	7,307.8	1,135.8	4,701.4	4,803.0	1.31	0.10	1.31
12,514.0	89.78	92.40	7,307.7	1,131.6	4,796.4	4,896.8	0.64	-0.56	-0.31
12,608.0	90.84	92.04	7,307.2	1,128.0	4,890.3	4,989.6	1.19	1.13	-0.38
12,703.0	89.78	92.37	7,306.7	1,124.3	4,985.2	5,083.4	1.17	-1.12	0.35
12,797.0	90.13	91.42	7,306.8	1,121.2	5,079.2	5,176.3	1.08	0.37	-1.01
12,892.0	91.54	88.20	7,305.4	1,121.5	5,174.1	5,270.7	3.70	1.48	-3.39
12,986.0	91.36	87.70	7,303.0	1,124.9	5,268.0	5,364.3	0.57	-0.19	-0.53
13,081.0	91.19	87.77	7,300.9	1,128.6	5,362.9	5,459.0	0.19	-0.18	0.07
13,175.0	91.28	88.75	7,298.9	1,131.5	5,456.9	5,552.6	1.05	0.10	1.04
13,270.0	89.52	92.25	7,298.2	1,130.7	5,551.8	5,646.8	4.12	-1.85	3.68
13,364.0	88.37	93.24	7,300.0	1,126.2	5,645.7	5,739.5	1.61	-1.22	1.05
13,459.0	88.99	91.84	7,302.1	1,121.9	5,740.6	5,833.2	1.61	0.65	-1.47
13,553.0	89.25	90.86	7,303.6	1,119.7	5,834.6	5,926.2	1.08	0.28	-1.04
13,648.0	89.96	90.52	7,304.2	1,118.6	5,929.6	6,020.4	0.83	0.75	-0.36
13,742.0	89.69	89.34	7,304.5	1,118.7	6,023.5	6,113.7	1.29	-0.29	-1.26
13,836.0	90.57	89.12	7,304.3	1,120.0	6,117.5	6,207.2	0.96	0.94	-0.23
13,930.0	90.66	89.64	7,303.3	1,121.0	6,211.5	6,300.7	0.56	0.10	0.55
14,025.0	89.34	88.51	7,303.3	1,122.5	6,306.5	6,395.2	1.83	-1.39	-1.19
14,116.0	91.10	87.77	7,303.0	1,125.5	6,397.5	6,485.8	2.10	1.93	-0.81
14,214.0	92.42	88.79	7,299.9	1,128.4	6,495.4	6,583.4	1.70	1.35	1.04
14,305.0	90.22	88.74	7,297.8	1,130.4	6,586.3	6,673.9	2.42	-2.42	-0.05
14,399.0	87.23	89.30	7,299.9	1,132.0	6,680.3	6,767.4	3.24	-3.18	0.60
14,430.5	87.32	89.45	7,301.4	1,132.3	6,711.7	6,798.7	0.56	0.27	0.48
WP1									
14,494.0	87.49	89.76	7,304.3	1,132.8	6,775.2	6,861.7	0.56	0.27	0.48

Company:	Tekton Energy	Local Co-ordinate Reference:	Well Pavistma 10 #1-3-32-090-8-CH
Project:	SEC.32-T6N-R67W	TVD Reference:	WELL @ 4977.5ft (RKB - 22.5')
Site:	Pavistma Pad Sec.32-T6N-R67W	MD Reference:	WELL @ 4977.5ft (RKB - 22.5')
Well:	Pavistma 10 #1-3-32-090-8-CH	North Reference:	True
Wellbore:	Wellbore #1	Survey Calculation Method:	Minimum Curvature
Design:	Wellbore #1	Database:	Landmark

Survey										
Measured Depth (ft)	Inclination (°)	Azimuth (°)	Vertical Depth (ft)	+N/-S (ft)	+E/-W (ft)	Vertical Section (ft)	Dogleg Rate (°/100ft)	Build Rate (°/100ft)	Turn Rate (°/100ft)	
14,588.0	87.67	90.07	7,308.3	1,132.9	6,869.1	6,955.0	0.38	0.19	0.33	
14,682.0	87.76	89.66	7,312.0	1,133.1	6,963.0	7,048.3	0.45	0.10	-0.44	
14,777.0	87.14	88.63	7,316.3	1,134.5	7,057.9	7,142.7	1.26	-0.65	-1.08	
14,871.0	88.99	88.80	7,319.4	1,136.6	7,151.8	7,236.2	1.98	1.97	0.18	
14,965.0	88.99	89.04	7,321.1	1,138.4	7,245.8	7,329.7	0.26	0.00	0.26	
15,060.0	88.64	90.68	7,323.1	1,138.6	7,340.8	7,424.0	1.76	-0.37	1.73	
15,154.0	89.52	92.49	7,324.6	1,136.0	7,434.7	7,517.0	2.14	0.94	1.93	
15,249.0	90.48	92.57	7,324.6	1,131.8	7,529.6	7,610.7	1.01	1.01	0.08	
15,343.0	90.22	92.43	7,324.0	1,127.7	7,623.5	7,703.5	0.31	-0.28	-0.15	
15,435.9	89.35	91.03	7,324.3	1,124.9	7,716.4	7,795.4	1.78	-0.94	-1.51	
WP2										
15,437.0	89.34	91.01	7,324.4	1,124.9	7,717.5	7,796.4	1.78	-0.94	-1.51	
15,532.0	90.75	90.81	7,324.3	1,123.4	7,812.5	7,890.6	1.50	1.48	-0.21	
15,626.0	89.96	90.08	7,323.7	1,122.7	7,906.5	7,983.8	1.14	-0.84	-0.78	
15,720.0	90.22	89.24	7,323.5	1,123.2	8,000.5	8,077.2	0.94	0.28	-0.89	
15,814.0	89.78	89.67	7,323.5	1,124.1	8,094.4	8,170.7	0.65	-0.47	0.46	
15,876.0	90.53	90.25	7,323.4	1,124.2	8,156.4	8,232.2	1.53	1.21	0.94	
WP3										
15,908.0	90.92	90.55	7,323.0	1,124.0	8,188.4	8,264.0	1.53	1.21	0.94	
16,003.0	91.01	90.92	7,321.4	1,122.7	8,283.4	8,358.1	0.40	0.09	0.39	
16,097.0	89.60	91.24	7,320.9	1,121.0	8,377.4	8,451.2	1.54	-1.50	0.34	
16,192.0	89.34	91.08	7,321.8	1,119.0	8,472.4	8,545.3	0.32	-0.27	-0.17	
16,286.0	90.31	90.29	7,322.0	1,117.9	8,566.4	8,638.5	1.33	1.03	-0.84	
16,380.0	89.69	90.32	7,322.0	1,117.4	8,660.4	8,731.8	0.66	-0.66	0.03	
16,475.0	88.72	89.62	7,323.4	1,117.5	8,755.4	8,826.1	1.26	-1.02	-0.74	
16,570.0	89.96	89.28	7,324.4	1,118.4	8,850.3	8,920.5	1.35	1.31	-0.36	
16,664.0	91.36	90.01	7,323.4	1,119.0	8,944.3	9,013.9	1.68	1.49	0.78	
16,758.0	90.57	89.41	7,321.8	1,119.4	9,038.3	9,107.3	1.06	-0.84	-0.64	
16,853.0	91.63	89.24	7,320.0	1,120.6	9,133.3	9,201.7	1.13	1.12	-0.18	
16,947.0	90.45	88.96	7,318.3	1,122.0	9,227.3	9,295.2	1.29	-1.26	-0.30	
17,042.0	91.28	88.40	7,316.8	1,124.2	9,322.2	9,389.8	1.05	0.87	-0.59	
17,119.0	91.96	87.94	7,314.6	1,126.7	9,399.2	9,466.4	1.07	0.88	-0.60	
BHL 1980'FNL & 460'FEL, Sec.33										

Checked By: _____	Approved By: _____	Date: _____
-------------------	--------------------	-------------